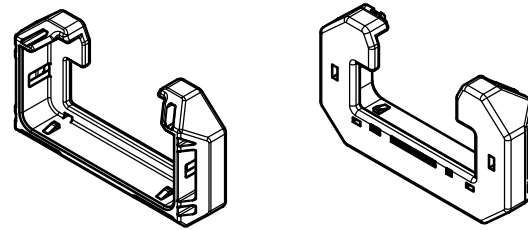
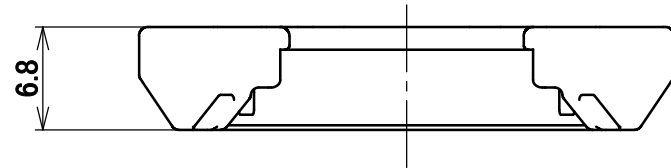
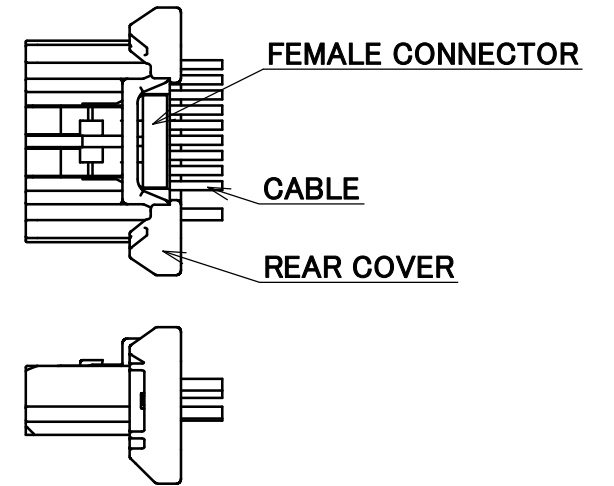


QHM-E1A001-09-A3C Rev.1

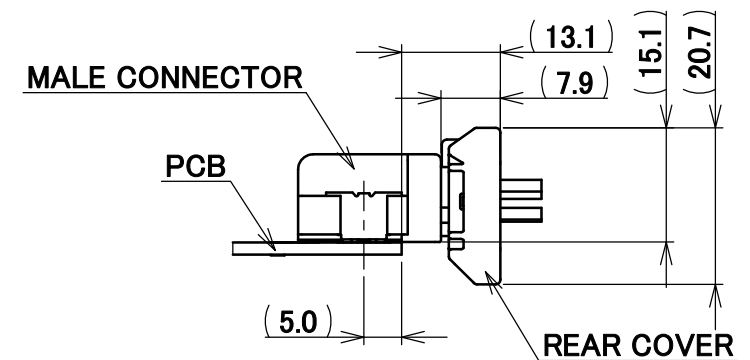
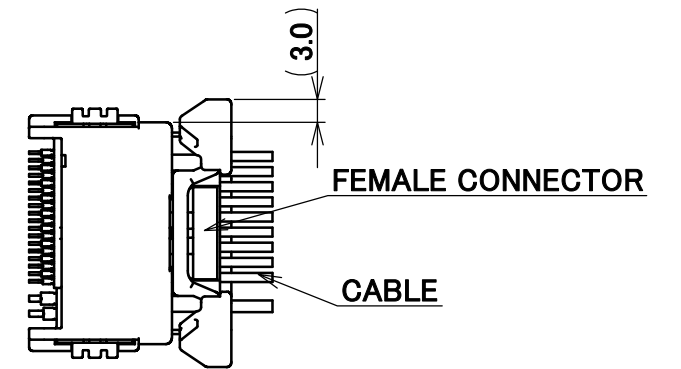
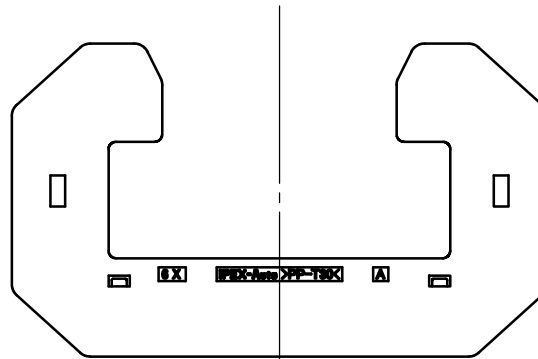
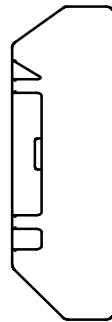
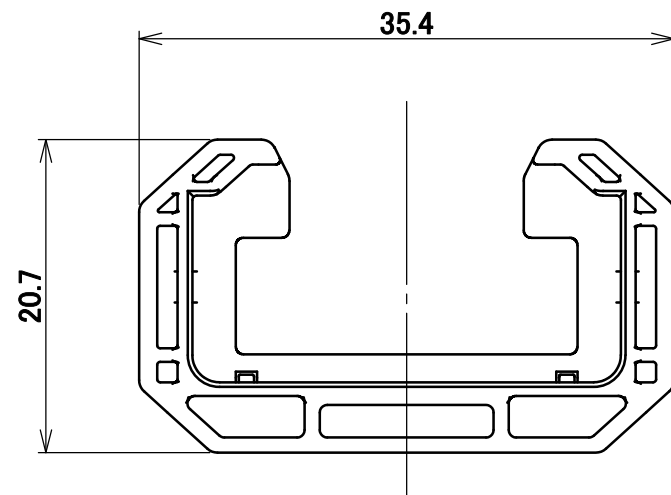
PART NO.	
V0072-93020-611	



ISOMETRIC VIEW
1:1




REAR COVER ASSEMBLY
1:1



MATING STATE
1:1

- NOTES
- 1.APPLICABLE PART NO.:
•FEMALE HOUSING...V0072-020B-111(KEY CODING - A)
...V0072-020B-112(KEY CODING - B)
 - 2.COMPLY WITH ELV/RoHS
 - 3.INSERTION FORCE TO FEMALE HOUSING:55N MAX.
RETENTION FORCE TO FEMALE HOUSING:30N MIN.

					1	REAR COVER			PP-T30	BLACK		
					NO.	DESCRIPTION			MATERIAL	FINISH/COLOR/REMARKS		
					ANGLE	±2°	6 OVER 30 MAX.	±0.3		SERIES No. R1	CUSTOMER COPY	
					6 MAX.	±0.2	30 OVER 120 MAX.	±0.5				
3	S2155	H.H	Sep./01/'21	J.T	GENERAL TOLERANCE.		120 OVER	±0.5%	TITLE ISH® CONNECTOR PRESET TYPE 20P HYBRID FEMALE HOUSING REAR COVER		SCALE	I-PEX
2	S1664	S.T	Jan./09/'19	E.K	DWG.	H. NAOI		DATE July/27/' 18			2:1	
1	S1653	H.N	Dec./11/'18	E.K	CHK.	T. OSUGA		Aug. /01/' 18			UNIT	
0	S1561	H.N	July/27/'18		T. OSUGA		Aug. /01/' 18	mm				
REV.	ECN	BY	DATE	APP.	APP.	E. KAWABE			DWG. No.	SIZE	SHEET	REV.
REVISION RECORD					E. KAWABE			Aug. /02/' 18	CV0072-93020	A3	1/1	3