

MINIDOCK™ Standard Type Connector Right Angle Receptacle

Part No. 30002

Packing Standard

16	S24124	May 31, 2024	Y. Kawano	Y. Baba	S. Suzuki
15	S19008	January 9, 2019	M. Imai		T. Hirakawa
14	S16643	September 28, 2016	R. Hoshino	M. Takemoto	K. Narita
13	S12098	April 4, 2012	M. Yoshimura	K. Narita	E. Kawabe
Rev.	ECN	Date	Prepared by	Checked by	Approved by

1. Product Name(s) and Part Number(s)

Product Name	Part Numbers
MINIDOCK Standard Type Connector Right Angle Receptacle	30002-100T-**F 30002-240T-**F 30002-100T-F 30002-240T-F
Cross Recessed Head Machine Screw	90023-001

Note: Connectors with screw only

2. Packing Material and Part Number

2.1 Connector

Pos	Outer Dimension	Tray			Shipping Carton	Packing Carton
		Width	Depth	Number of Pockets	Outer Dimension	Outer Dimension
		950022-100, 950017-240			950001-001	950000-001
					W×D×H	W×D×H
100 P	360×165	21.0	16.5	20	385×175×90	406×406×214
240 P	360×165	21.0	16.5	12	385×175×90	406×406×214

2.2 Screw

Plastic Bag

Outer Dimension

W×H

190 x 120 (reference)

3. Packing Quantity

3.1 Connector

Pos.	Quantity per Tray	Quantity per Packing Carton
100 P	20	20 pockets × 5 trays per shipping carton × 4 shipping cartons = 400 pieces per packing carton
240 P	12	12 pockets × 5 trays per shipping carton × 4 shipping cartons = 240 pieces per packing carton

3.2 Screw

Pos.	Number of Screws per Connector	Number of Screws per Packing Carton
100 P	4 screws	1,600 screws per bag
240 P	4 screws	960 screws per bag

4. Label

The diagram shows a rectangular label divided into several sections. On the left, there are three rows for 'P/N', 'QTY', and 'LOT'. Below these is a QR code. To the right of the QR code is a 'NAME:' field. Below the name field is 'MADE IN *****' with an arrow pointing to a field. In the top right corner of the label area is a 'CHECK' field with a stamp. Below the 'CHECK' field is a 'REMARK' field. To the right of the 'REMARK' field is a 'RoHS Compliant' logo. Further right is a recycle symbol with '03' and 'PVC' below it. The label is surrounded by numbered callouts 1 through 10.

- ① Part Number
- ② Quantity
- ③ Ten Digits Product Lot Number

Y	Y	M	M	D	D	#	#	#	#
Year		Month		Day		Four Digit Code for I-PEX usage			

- ④ Product Name
- ⑤ QR Code
- ⑥ Check Stamp
- ⑦ Country of Origin
- ⑧ Recycle Mark and Compliance Mark
- ⑨ Logo Mark
- ⑩ Manufacture Name

5. Packing Method

5.1 Packing of Tray

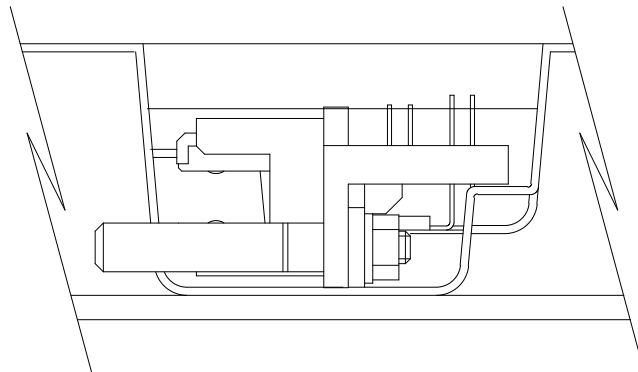


Fig. 1 Connector Orientation Inside the Pocket

5.2 Packing of Shipping Carton

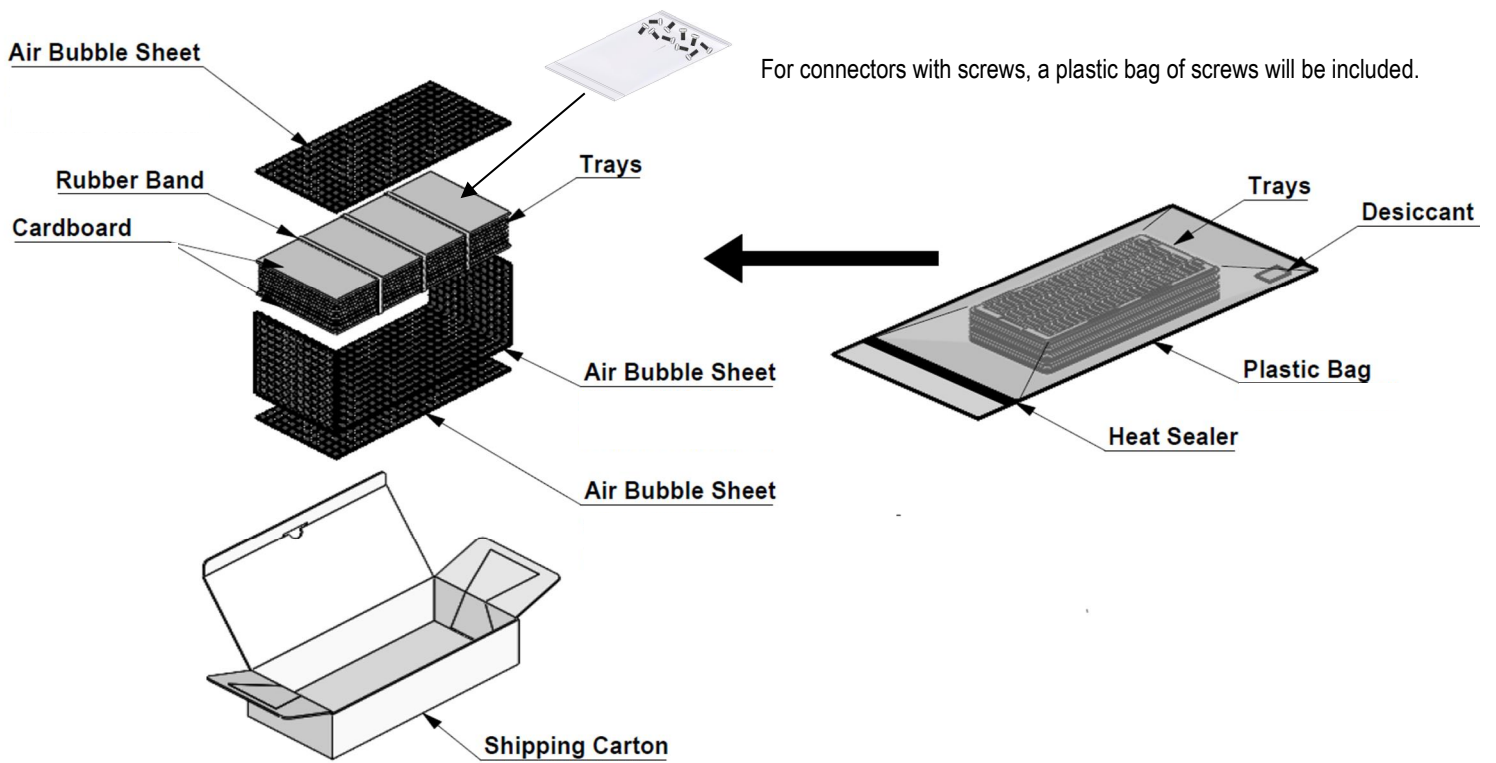


Fig. 2 Packing of Shipping Carton

5.3 Packing of Packing Carton

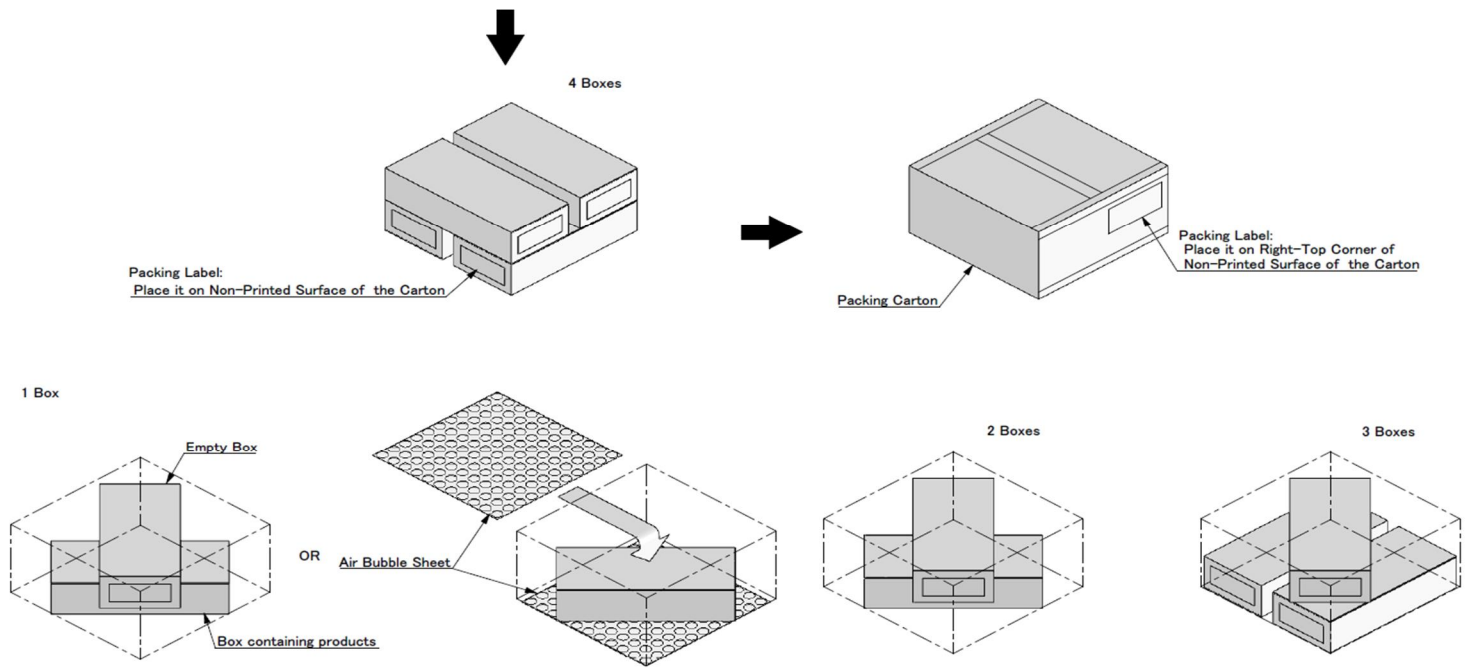


Fig.3 Packing of Packing Carton