

MINIDOCK™ Standard Type Connector Right Angle Plug

Part No. 30001 and 30082

Packing Standard

22	S24122	June 6, 2024	Y. Kawano	Y. Baba	S. Suzuki
21	S19009	January 9, 2019	M. Imai		T. Hirakawa
20	S13497	December 17, 2013	H. Tagomori	K. Narita	T. Takano
19	S12360	August 8, 2012	D. Shibata		E. Kawabe
Rev.	ECN	Date	Prepared by	Checked by	Approved by

1. Product Name(s) and Part Number(s)

Product Name	Part Numbers
MINIDOCK Standard Type Connector Right Angle Plug	30001-100T-F 30001-240T-F 30001-100T-01F 30001-240T-02F 30082-100T-F
Cross Recessed Head Machine Screw	90023-001

Note: Connectors with screw only

2. Packing Material and Part Number

		Tray	Shipping Carton	Packing Carton		
		950020-100 and 950015-240	950001-001	950000-001		
Pos	Outer Dimension	Pocket			Outer Dimension W×D×H	Outer Dimension W×D×H
		Width	Depth	Number of Pockets		
100P	360×165	10.4	17.5	7×5	385×175×90	406×406×214
240P	360×165	10.4	17.5	7×3	385×175×90	406×406×214

Polyethylene Bag for Screws

Outer Dimension

W×D

190 x 120 (reference)

3. Packing Quantity

3.1 Connector

Pos.	Quantity per Tray	Quantity per Packing Carton
100 P	35	35 pockets × 4 trays × 4 shipping cartons = 560 connectors
240 P	21	21 pockets × 4 trays × 4 shipping cartons = 336 connectors

3.2 Screw

Pos.	Number of Screws per Connector	Quantity per Packing Carton
100 P	4	4 screws×560 connectors = 2,240 per bag
240 P	4	4 screws×336 connectors = 1,344 per bag

4. Label

The diagram shows a rectangular label layout with the following sections and callouts:

- 1**: Part Number (P/N)
- 2**: Quantity (QTY)
- 3**: Ten Digits Product Lot Number (LOT)
- 4**: Product Name (NAME)
- 5**: QR Code
- 6**: Check Stamp (CHECK)
- 7**: Country of Origin (MADE IN ***** ←)
- 8**: Recycle Mark and Compliance Mark (托盘, 03 PVC)
- 9**: Logo Mark (RoHS Compliant)
- 10**: Manufacture Name (bottom left)

- ① Part Number
- ② Quantity
- ③ Ten Digits Product Lot Number

Y	Y	M	M	D	D	#	#	#	#
Year		Month		Day		Four Digit Code for I-PEX usage			

- ④ Product Name
- ⑤ QR Code
- ⑥ Check Stamp
- ⑦ Country of Origin
- ⑧ Recycle Mark and Compliance Mark
- ⑨ Logo Mark
- ⑩ Manufacture Name

5. Packing Method

5.1 Packing of Tray

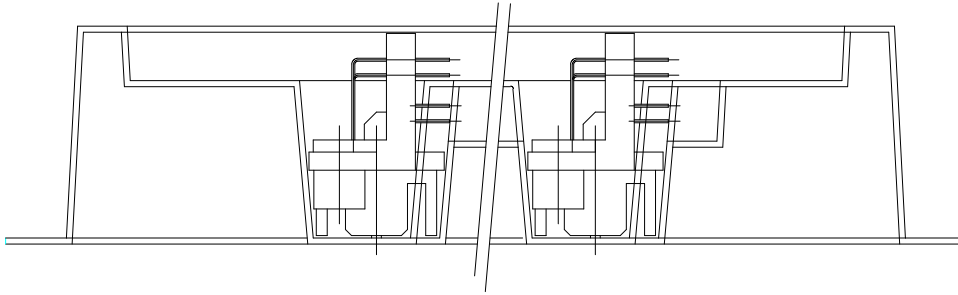


Fig. 1 Connector Orientation Inside the Pocket

5.2 Packing of Shipping Carton

For connectors with screws, a plastic bag of screws will be included.

For P/N: 30001 only, thick paper will be placed between trays and on top of the top tray.

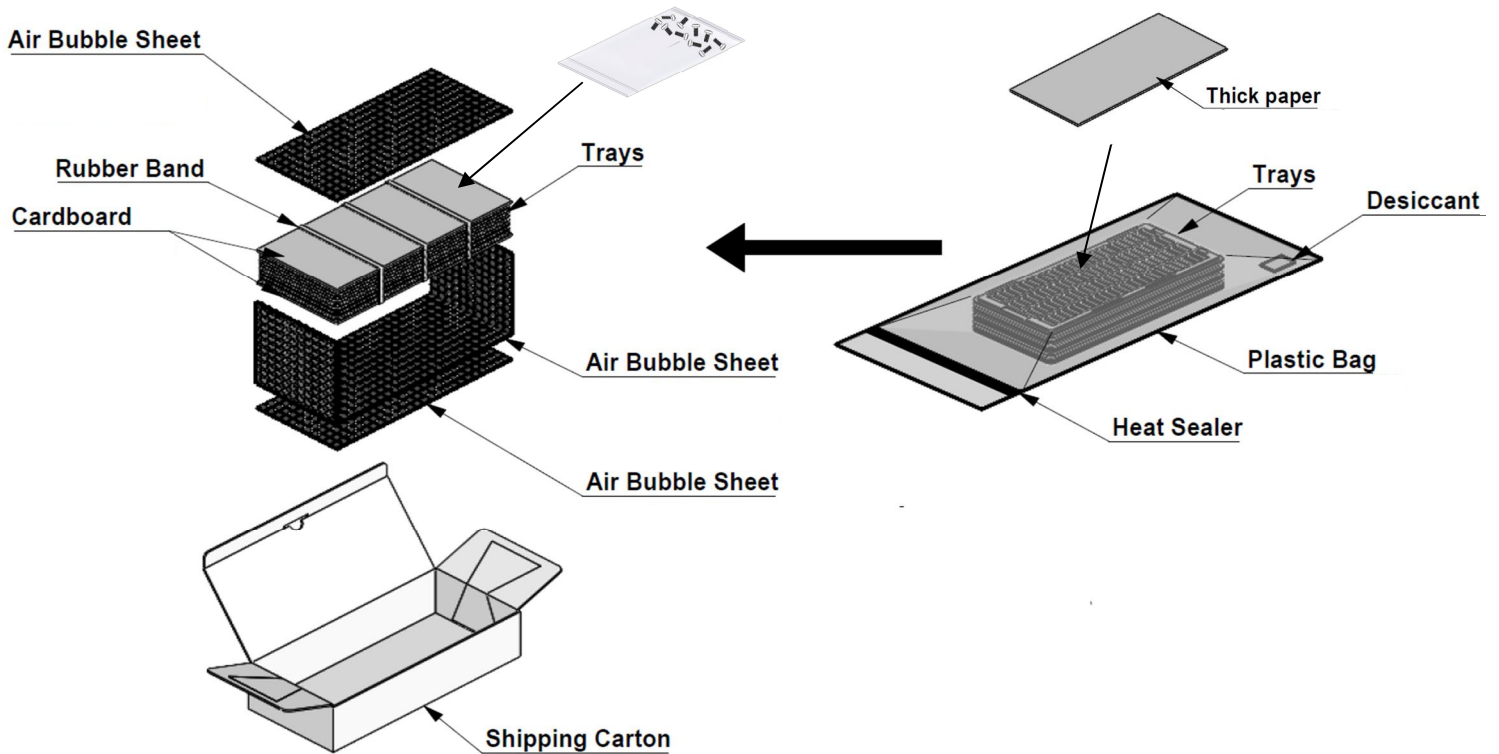


Fig. 2 Packing of Shipping Carton

5.3 Packing of Packing Carton

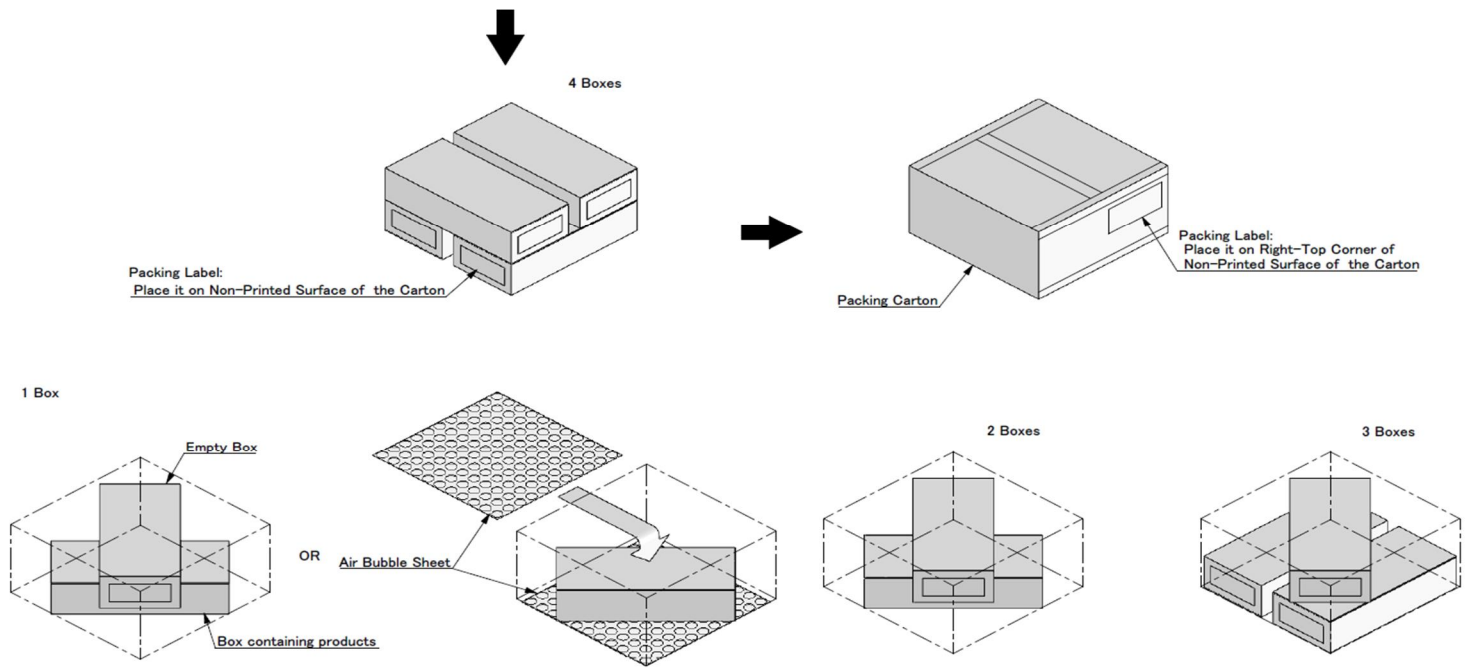


Fig. 3 Packing of Packing Carton