

CABLINE®-VSF SHELL ASS'Y

Part No. 20645-0**T-01

Packing Standard

2	S22055	February 7, 2022	T.Onishi	M.Muro	H.Ikari
1	S16273	May 3, 2016	H.Ikari		Y.Shimada
0	S14456	November 7, 2014	H.Aoki	J.Tateishi	E.Kawabe
Rev.	ECN	Date	Prepared by	Checked by	Approved by

1. Product Name(s) and Parts Number(s)

Product Name	Part Number
CABLINE-VSF SHELL ASS'Y	20645-0**T-01

2. Packing Material

POS.	TRAY P/N 950268				SHIPPING CARTON P/N 950001	PACKING CARTON P/N 950000
	Outer Dimension	POCKET			Outer Dimension	Outer Dimension
	W×D×H	Width	Depth	Number pf Pockets	W×D×H	W×D×H
30P	360×165×4	29.0×8.0	3.5	100	385×175×90	406×406×214
40P				(TOTAL)		





Pos.	PLASTIC BAG P/N 950113	DESICCANT
	SIZE	QUANTITY 1 BAG
30P	700×600	3g×1
40P		

3. Packing Quantity

Pos.	Pieces per Ditch	Pieces per Tray	Pieces per Shipping Carton	Quantity Per Packing Carton
30P	1	100	100 x 20 = 2,000	2,000 x 4 = 8,000
40P				

4. Label

- 4-1. Put a label on each Shipping Carton and Packing Carton.
- 4-2. Items of label are shown as below.

P/N	①	CHECK	⑧ 
QTY	②	⑥	
LOT	③		
	NAME: ④ MADE IN ***** ← ⑦	REMARK	⑨ 
⑩			

- ① Part Number
- ② Quantity
- ③ Ten Digits Product Lot Number

Y	Y	M	M	D	D	#	#	#	#
Year		Month		Day		Four Digit Code for I-PEX usage			

- ④ Product Name
- ⑤ QR Code
- ⑥ Check Stamp
- ⑦ Country of Origin
- ⑧ Recycle Mark and Compliance Mark
- ⑨ Logo Mark
- ⑩ Manufacture Name

5. PACKING STYLE

Direction of products putting in tray.



Fig.1

[NOTE] Piling the tray to the same direction and putting a lid on the tray with empty tray.

Move logo mark upward, and pack it.

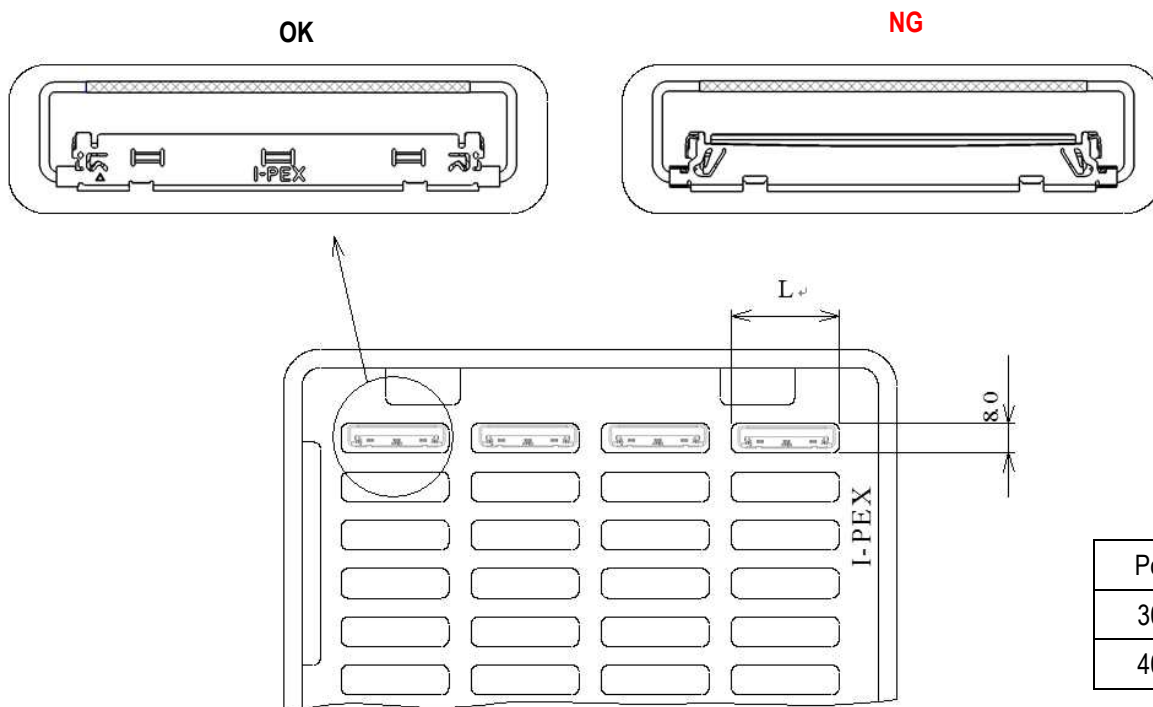


Fig. 2

※Move logo mark upward, and pack it.

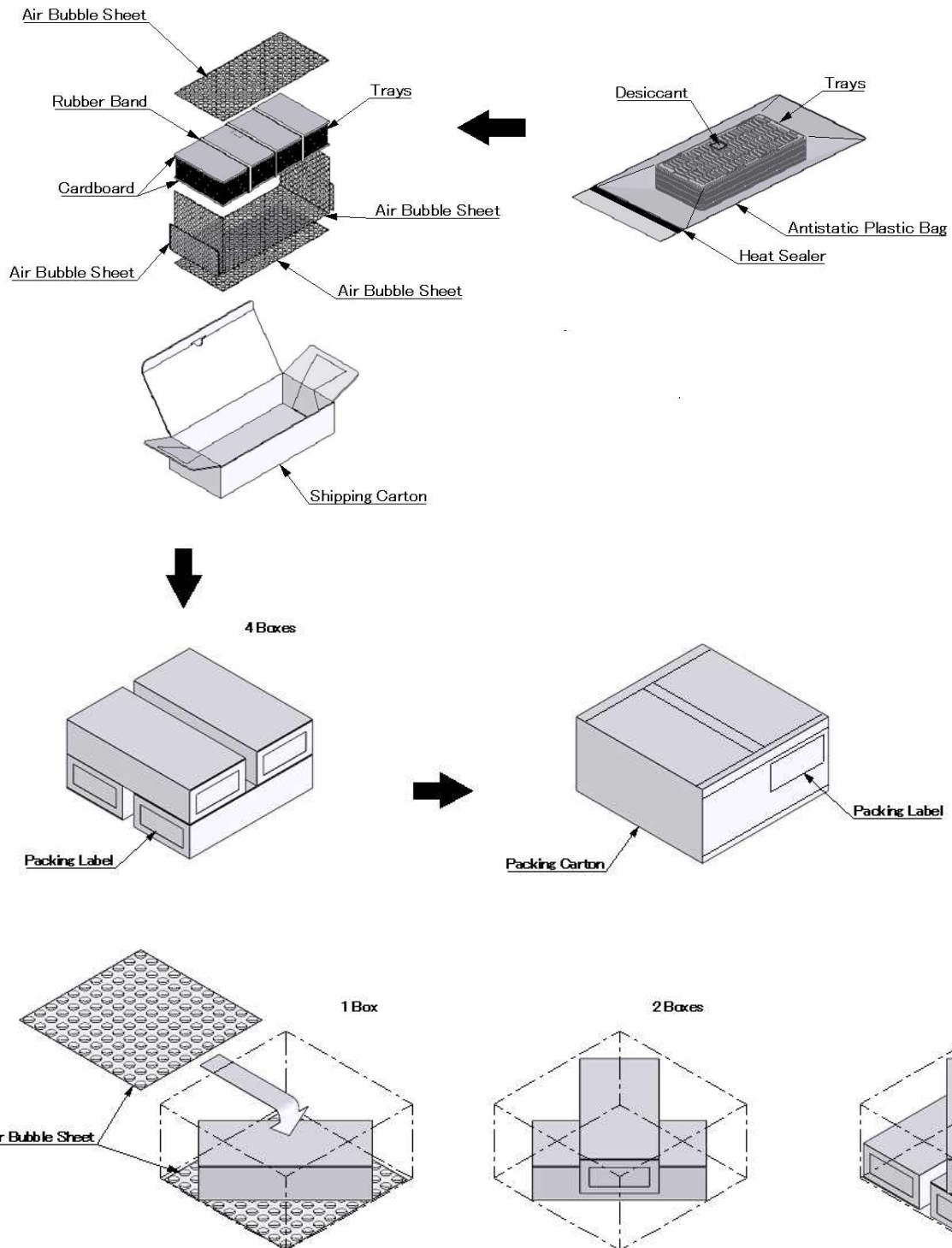


Fig.3

※If operator pulls up the rubber band when they take out parts, there is possibility that tray bundle loosen and the parts drop out.
Please note the taking up method.

OK



Pull up air bubble sheet.

NG



Not pull up rubber band.