

# CABLINE®-CX II PLUG HOUSING ASSEMBLY

Part No. 20974-040T-01

## Packing Standard

Rev.	ECN	Date	Prepared by	Checked by	Approved by
2	S24155	May 7, 2024	T.Ono	T.Tanigawa	H.Ikari
1	S19510	September 4, 2019	S.Yamaguchi	T.Kurachi	H.Ikari
0	S17743	October 6, 2017	R.Hoshino	T.Yayoshi	M.Takemoto

# CABLINE-CX II PLUG HOUSING ASSEMBLY Packing Standard

Document No.  
PST-17122-C02EN

## 1. Product Name(s) and Part Number(s)

Product Name	Part Number
CABLINE-CX II PLUG HOUSING ASSEMBLY	20974-040T-01

## 2. Packing Material and Part Number




Pos.	Tray				Shipping Carton	Packing Carton
	950476				950001	950000
Outer Dimension	Pocket			Outer Dimension	Outer Dimension	
	Width	Depth	Number of Pockets			W×D×H
40P	360 x 165	19.0 × 4.2	1.8	200	385 x 175 x 90	406 x 406 x 214

Pos.	Plastic Bag	Desiccant
	950524	
Outer Dimension	Quantity (1 Bag)	
	W×D	
40P	460 x 305	3g x 1

## 3. Packing Quantity

Pos.	Piece per Pocket	Pieces per Tray	Quantity per Shipping Carton	Quantity per Packing Carton
40P	1	200	4,000 (20 Trays)	4,000 × 4 = 16,000 (4 Boxes)

## 4. Label

P/N	①	CHECK	⑧ 托盘 
QTY	②	⑥	
LOT	③		
	NAME:	REMARK	⑨ 
	④ MADE IN ***** ← ⑦		

- ① Part Number
- ② Quantity
- ③ Ten Digits Product Lot Number

Y	Y	M	M	D	D	#	#	#	#
Year		Month		Day		Four Digit Code for I-PEX Usage			

- ④ Product Name
- ⑤ QR Code
- ⑥ Check Stamp
- ⑦ Country of Origin
- ⑧ Recycle Mark and Compliance Mark
- ⑨ Logo Mark
- ⑩ Manufacture Name

## 5. Packing Method

Direction of products putting in tray.

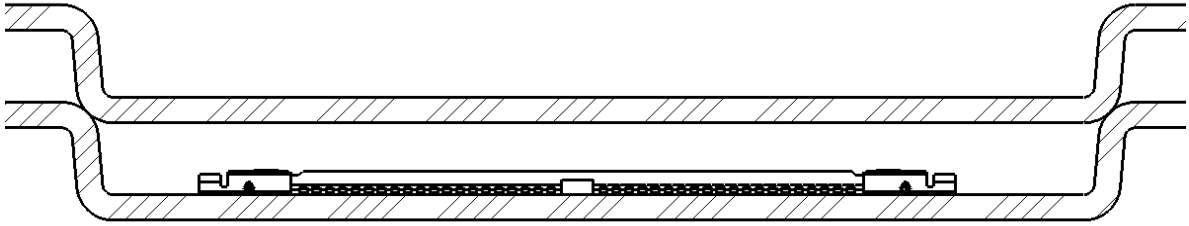


Fig.1

[Note] Piling the tray to the same direction and putting a lid on the tray with empty tray.

※ Move metal shell downward, and pack it.

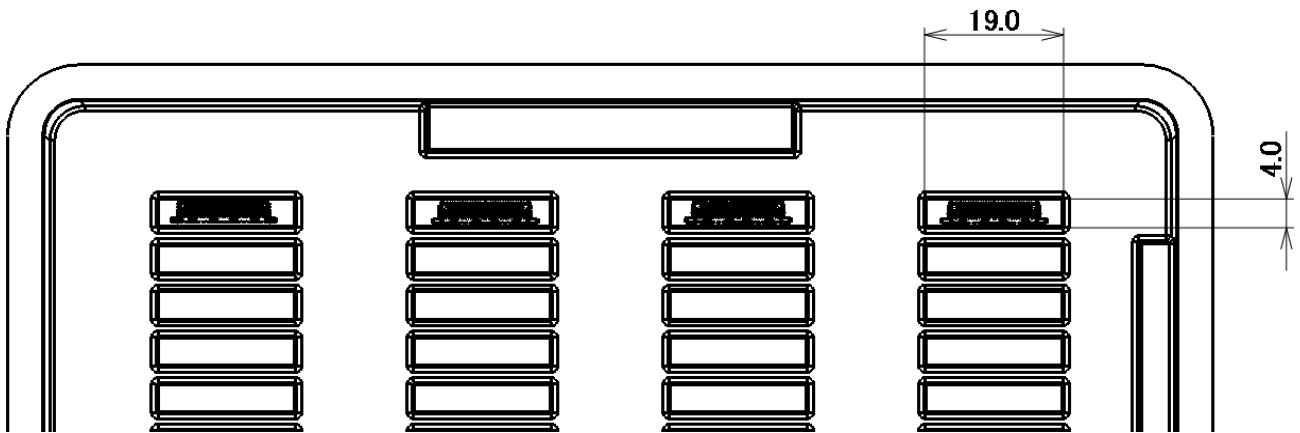
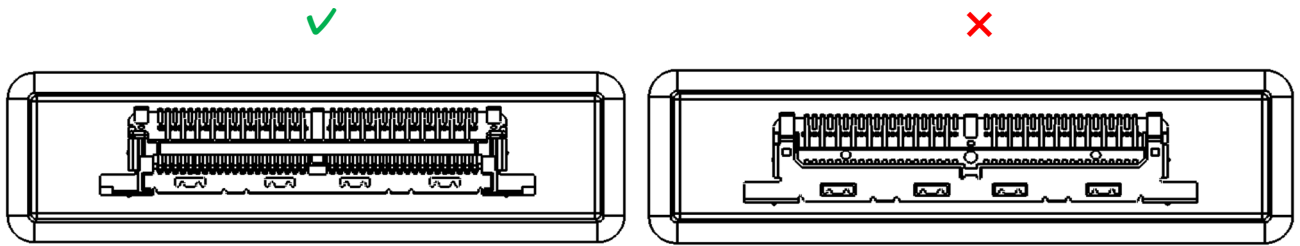


Fig.2

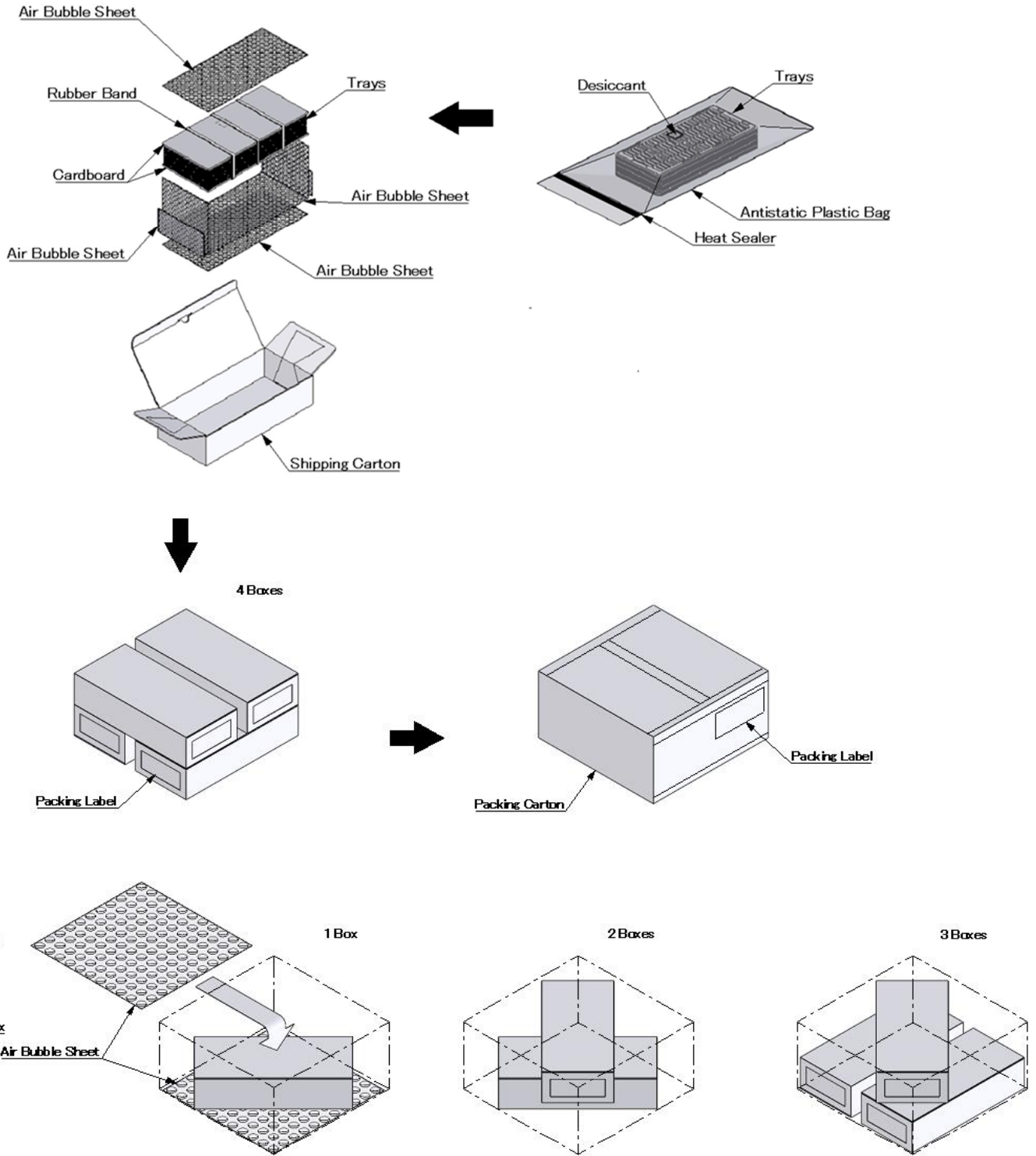


Fig.3

- ※ If operator pulls up the rubber band when they take out parts, there is possibility that tray bundle loosen and the parts drop out. Please note the taking up method.

