

# MHF<sup>®</sup> 7S SMA ADAPTER

Part No. Plug:91255-0001 Receptacle:91256-0001

## Instruction Manual

Rev.	ECN	Date	Prepared by	Checked by	Approved by
1	S22514	December 2, 2022	Y. Imaji	K. Yufu	Y. Hashimoto
0	S22511	November 28, 2022	Y. Imaji	K. Yufu	Y. Hashimoto

## 1. Purpose

This document contains instruction manual on inspection adapters for MHF 7S Connector, MHF 7S PLUG / RECEPTACLE SMA ADAPTER for safe operation and cautions on test procedures. Refer to instruction manual on MHF 7S before usage.

### ○ Inspection Adapter

Product name: MHF 7S PLUG SMA ADAPTER

Part number: 91255-0001 (for MHF 7S PLUG)

Product name: MHF 7S RECEPTACLE SMA ADAPTER

Part number: 91256-0001 (for MHF 7S RECEPTACLE)

### ○ Connector

Product name: MHF 7S PLUG

Part number: 20980-001R-13

Product name: MHF 7S RECEPTACLE

Part number: 20981-001E-02

### 【SMA adapter parts names】

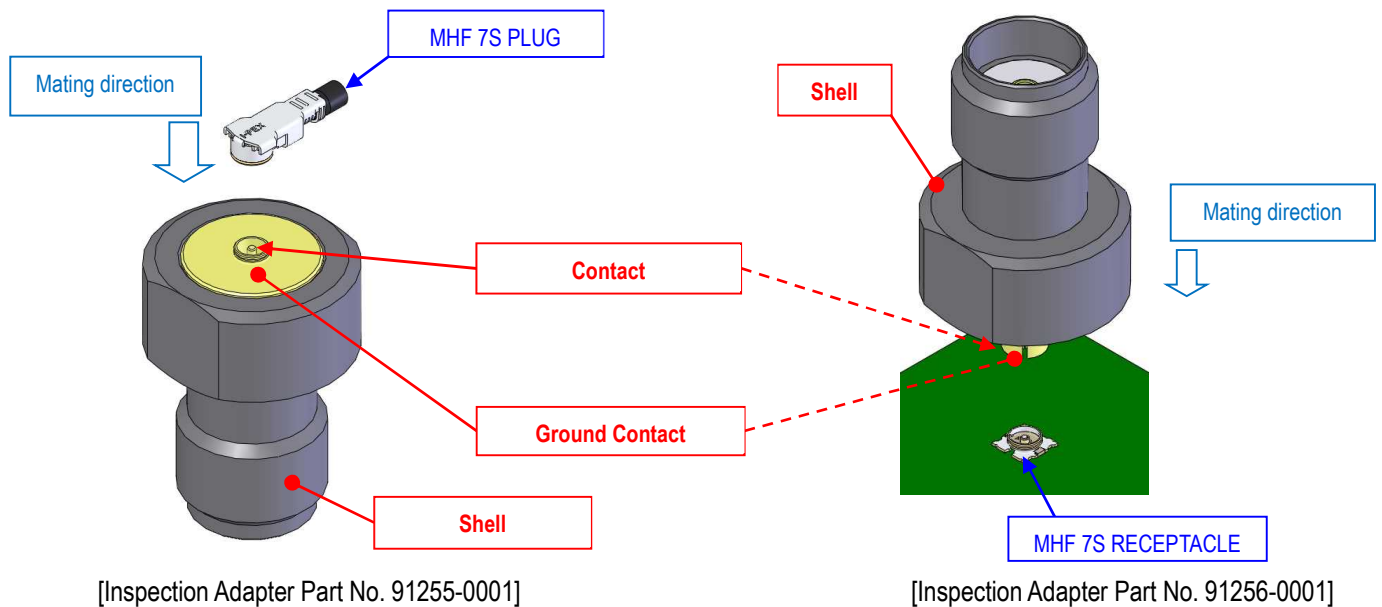


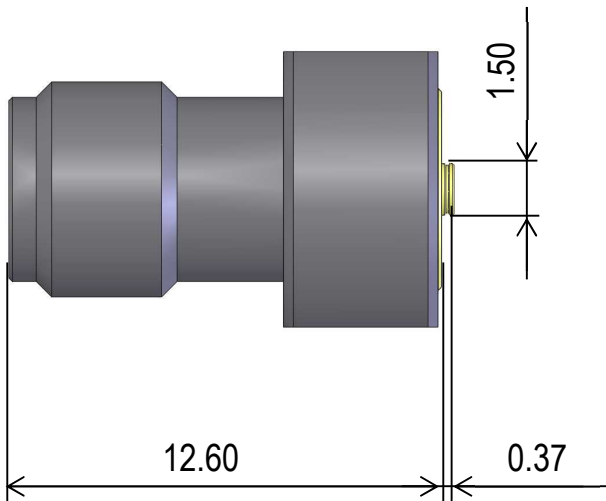
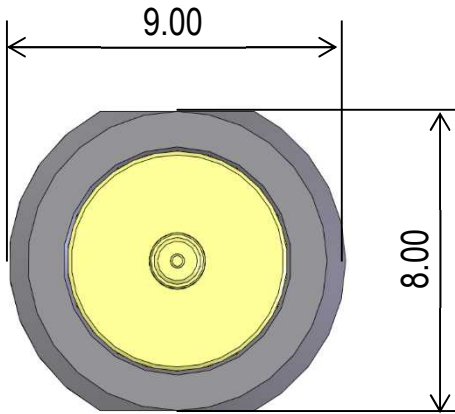
Fig. 1

## 2. Inspection Adapter Dimensions

Peripheral components of MHF 7S Connector shall not interference to the inspection adapter when mating with MHF 7S Connector.

[Dimension of inspection adapter unit: mm]

MHF 7 PLUG SMA ADAPTER  
Part No. 91255-0001



MHF 7 RECEPTACLE SMA ADAPTER  
Part No. 91256-0001

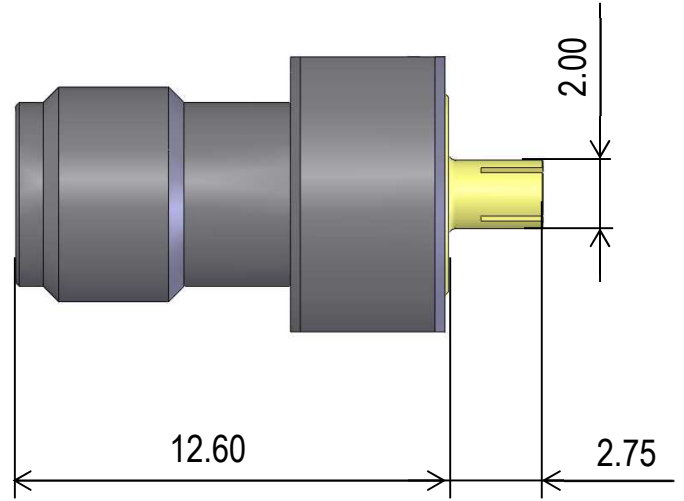
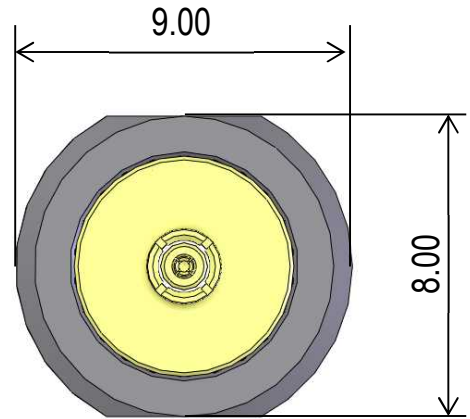


Fig.2

### CAUTION

- Interference will damage the components and causes inspection failure.

## 3. Insertion and withdrawal of inspection adapter and connectors

### 3-1. PLUG

- ① Set the PLUG on the mating portion of the inspection adapter. Move the PLUG left and right, and back and forth slightly as shown in Fig. 3 to make sure the PLUG is firmly set.
- ② Push the center of the PLUG vertically as shown in Fig. 4.
- ③ In withdrawal, pull upward the PLUG vertically as shown in Fig. 5. (Using JIG, Part No. 91186-0001, for withdrawal is recommended.)

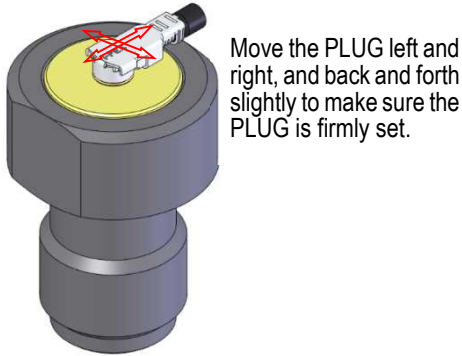


Fig. 3 ① Set the PLUG

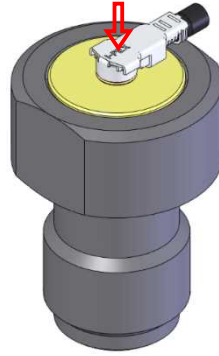


Fig. 4 ② Push the PLUG vertically

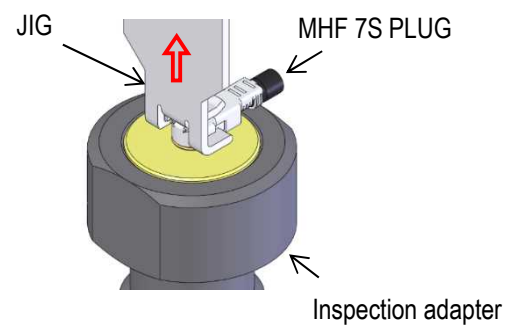


Fig. 5 ③ Pull up the PLUG vertically

### CAUTION

- In insertion, set the PLUG on the inspection adapter as shown in Fig. 6. Do not set the inspection adapter on the PLUG as shown in the Fig. 7.

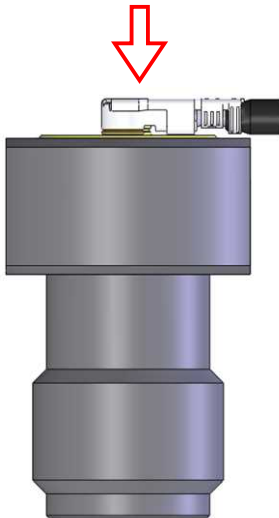


Fig. 6 Correct insertion direction

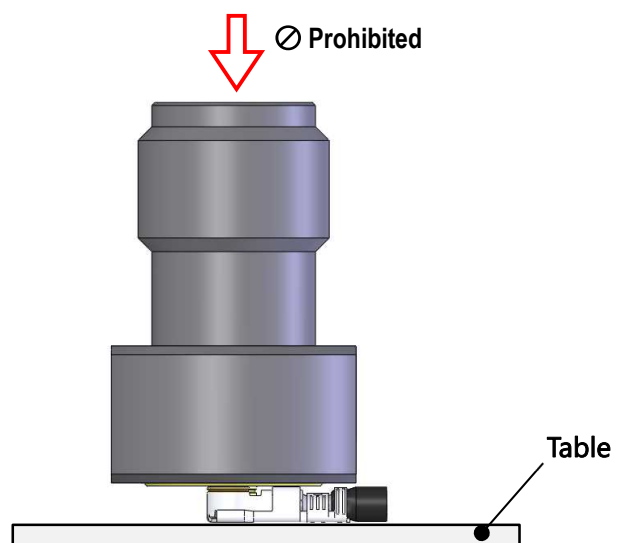


Fig. 7 Incorrect insertion direction

- In insertion, push the PLUG vertically to the inspection adapter. If the insertion force is applied to the PLUG in tilted or misaligned position, the inspection adapter or the PLUG will be damaged.
- In withdrawal, pull upward the PLUG vertically. Do not withdraw the PLUG by pulling upward the cable. Pulling upward the cable for the withdrawal may cause the damage on the inspection adapter or the PLUG.

## 3-2. RECEPTACLE

- ① Put the PCB mounting with RECEPTACLE on the table and set the inspection adapter. Move the inspection adapter left and right, and back and forth slightly as shown in Fig. 8 to make sure the inspection adapter is firmly set.
- ② Push the inspection adapter vertically as shown in Fig. 9.
- ③ In withdrawal, hold the PCB and pull the inspection adapter upward vertically as shown in Fig. 10.

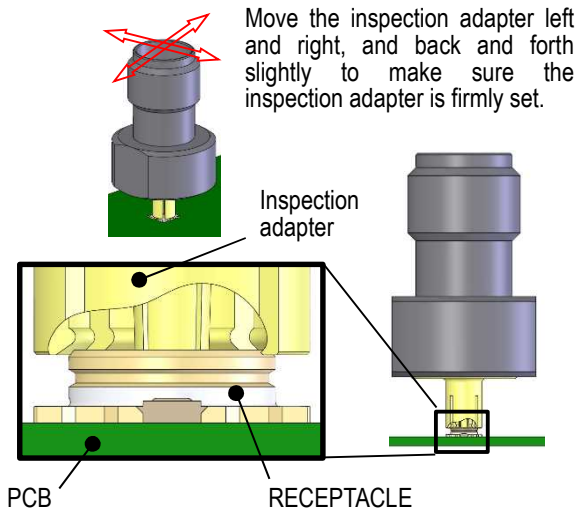


Fig. 8

- ① Set the inspection adapter

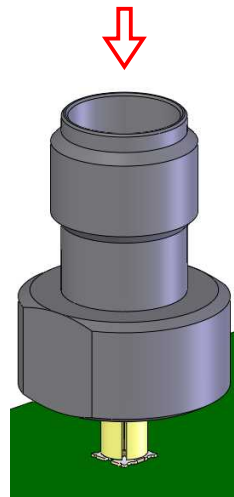


Fig. 9

- ② Push the inspection adapter vertically

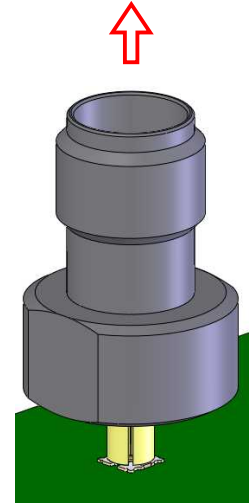


Fig. 10

- ③ Pull the inspection adapter vertically

### CAUTION

- In insertion, push the inspection adapter vertically to the PCB. If the insertion force is applied to the inspection adapter in tilted or misaligned position, the inspection adapter or the RECEPTACLE will be damaged.
- The inspection adapter or the RECEPTACLE are damaged by applying the diagonal force, which is generated by the cable connecting measurement instrument and the inspection adapter. Hold the inspection adapter and keep it straight during the measurement. See Fig. 11 for the inspection adapter's position.

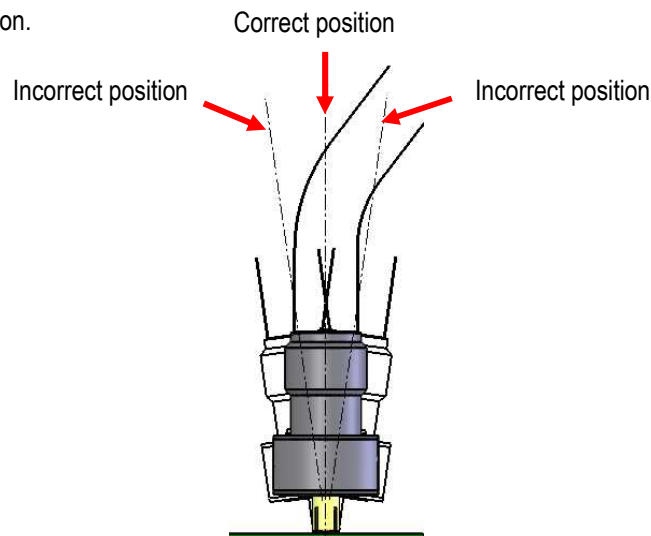


Fig. 11 Inspection adapter position

## 【How To Fasten Inspection Adapter】

[91255-0001 / 91256-0001]

As shown in Fig. 12, hold SMA-J with wrench and tighten SMA-P by screwing with 0.59 - 0.98 N·m torque wrench.

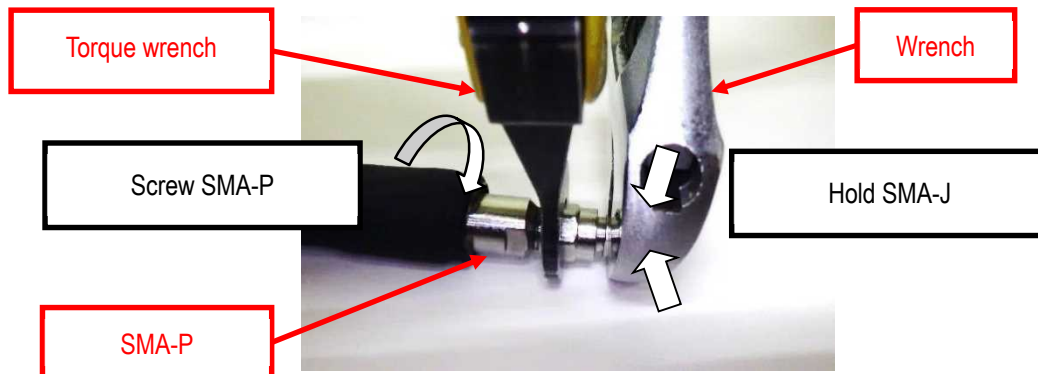


Fig. 12

### CAUTION

• Screw only SMA-P side. Proper torque 0.59 - 0.98 N·m is recommended to fasten SMA-P. Excess torque may cause the breakage of a SMA connector.