

EVAFLEX® 5-VS

Part No. 20535-0**E-02-* / 20720-0**E-02 / 20893-0**E-02

Instruction Manual

4	S23399	November 13, 2023	T. Minohara	M. Muro	H. Ikari
3	S19207	March 26, 2019	T. Tanigawa	T. Kurachi	H. Ikari
2	S16198	April 7, 2016	T. Tanigawa	T. Kurachi	J. Tateishi
1	S14375	September 23, 2014	T. Tanigawa	J. Tateishi	E. Kawabe
Rev.	ECN	Date	Prepared by	Checked by	Approved by

This manual provides the insertion & withdrawal methods and cautions to handle EVAFLEX 5-VS connector properly.

◆Connector

Product Names	Part Numbers
EVAFLEX 5-VS	20535-0**E-02-*
EVAFLEX 5-VS TYPE CH	20720-0**E-02
EVAFLEX 5-VS TYPE R	20893-0**E-02

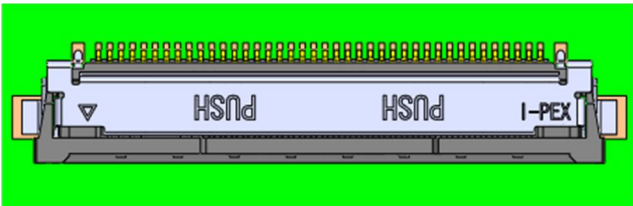


Fig.1 Appearance Configuration

【Identification of Connector Components】

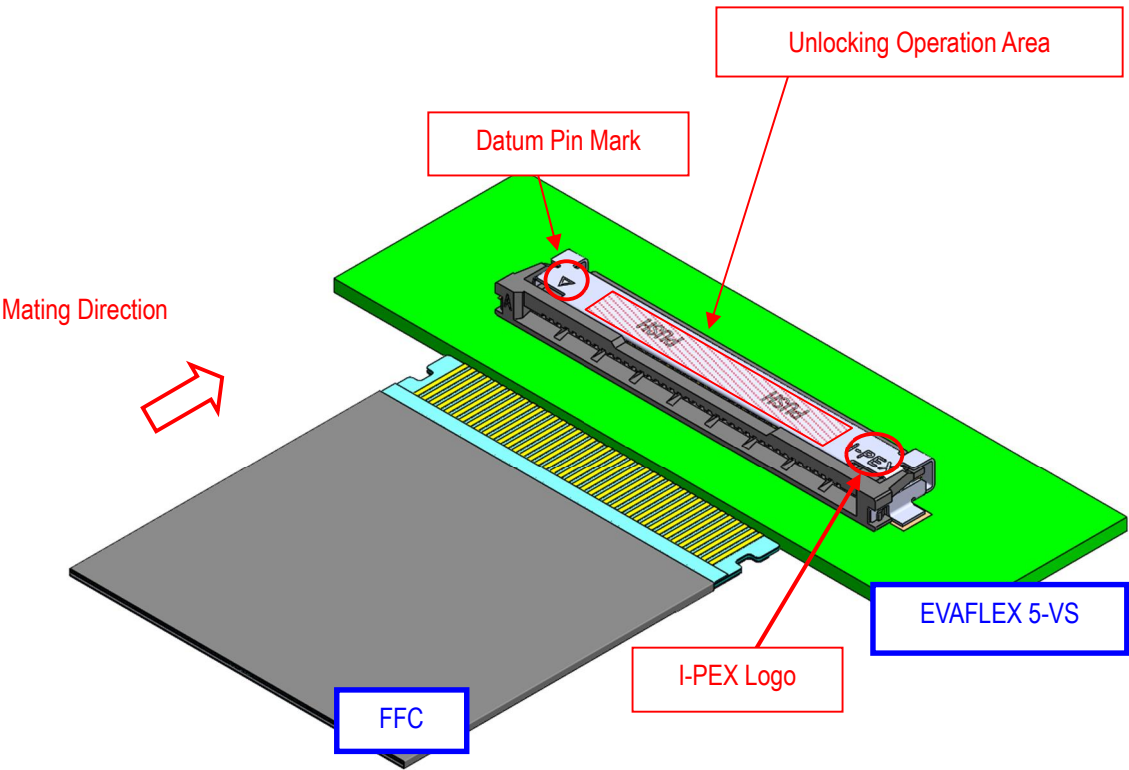


Fig.2 Identification of Connector Components

【FFC insertion Method】

- ① Set the FFC to the connector horizontally as shown in Fig.3-1.

*Ensure that the FFC pattern faces upward before inserting, as this product exclusively utilizes the upper contact type.

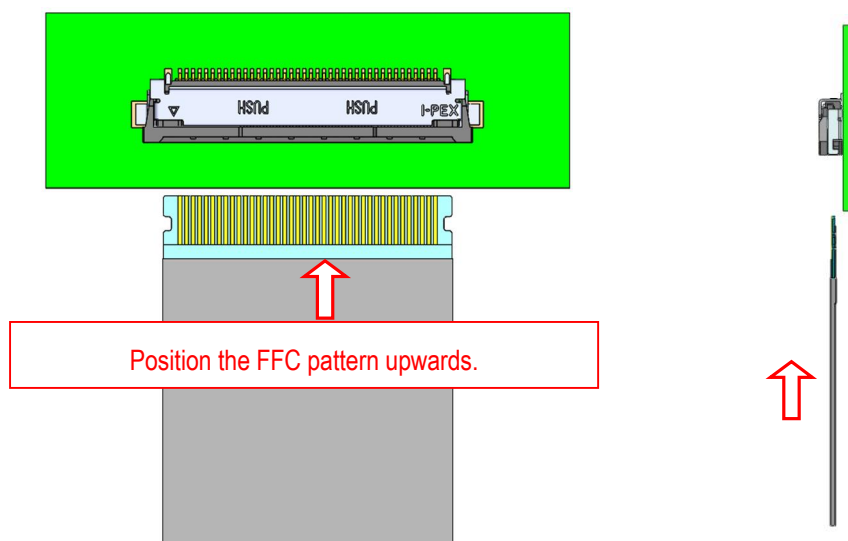


Fig.3-1 FFC Inserting Method 1

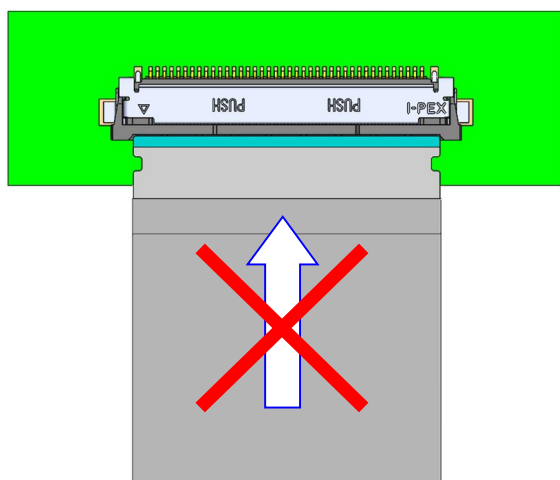


Fig.3-2 FFC Inserting Method – Incorrect Example 1

EVAFLEX 5-VS utilizes upper contacts. Do not insert the FFC downwards. (Fig.3-2)

- ② Insert the FFC to the connector horizontally and deeply as shown in Fig.3-3.

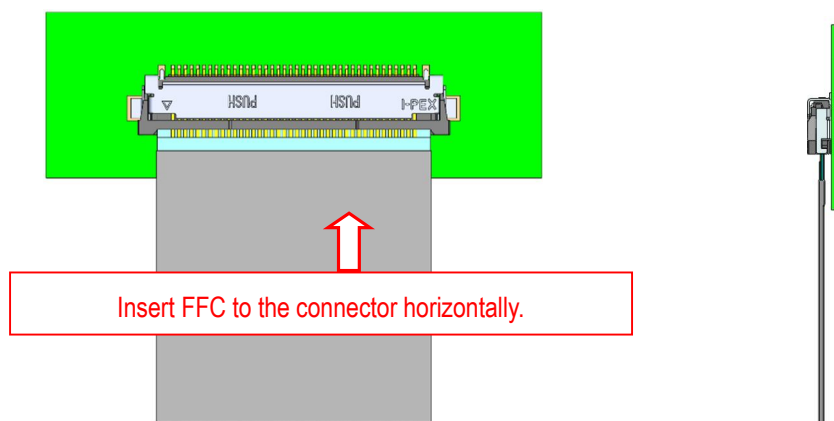


Fig.3-3 FFC Inserting Method 2

<Caution 1>

Insert the FFC horizontally. Do not push the FFC while it is slanted, as this may prevent the locks on both sides from locking properly. (Shown in Fig.3-4)

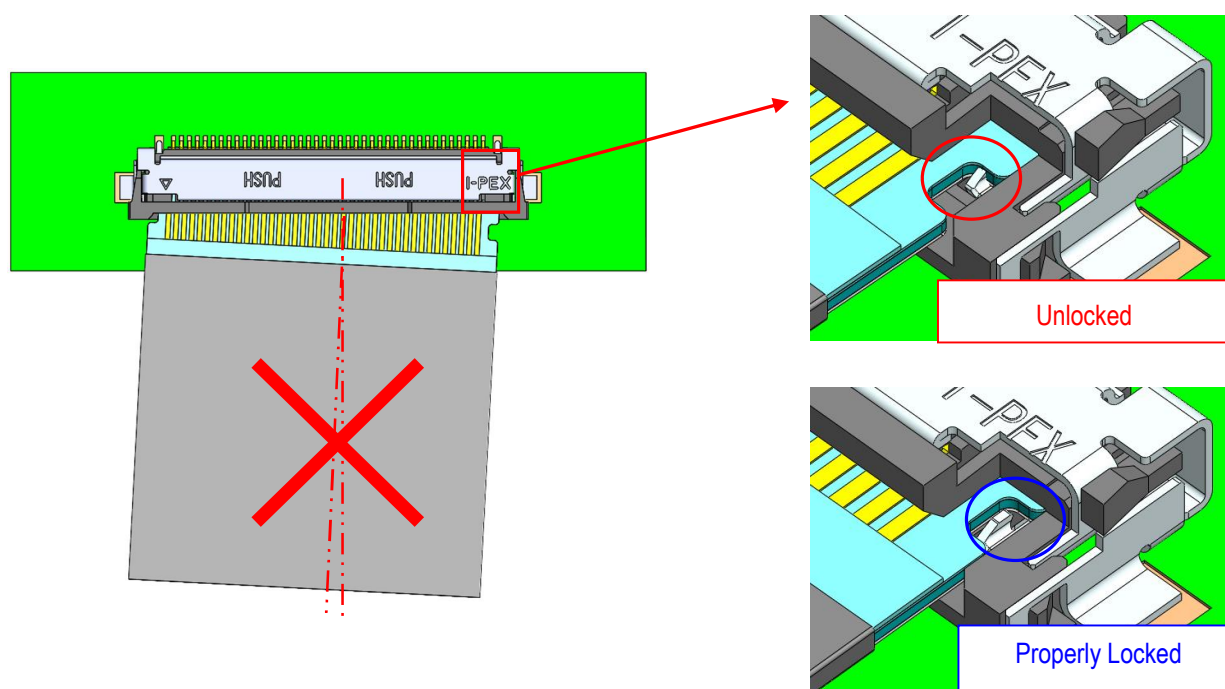


Fig.3-4 FFC Inserting Method - Incorrect Example 2

【FFC Extracting Method】

① Push entire top surface of the shell as shown in Fig.4-1.

- * Press near the engraving part of the shell from above.
- * Press the shell until its tip aligns with the housing hollow.
- * The lock will be released at approximately 10N. Excessive force may cause deformation of the connector.

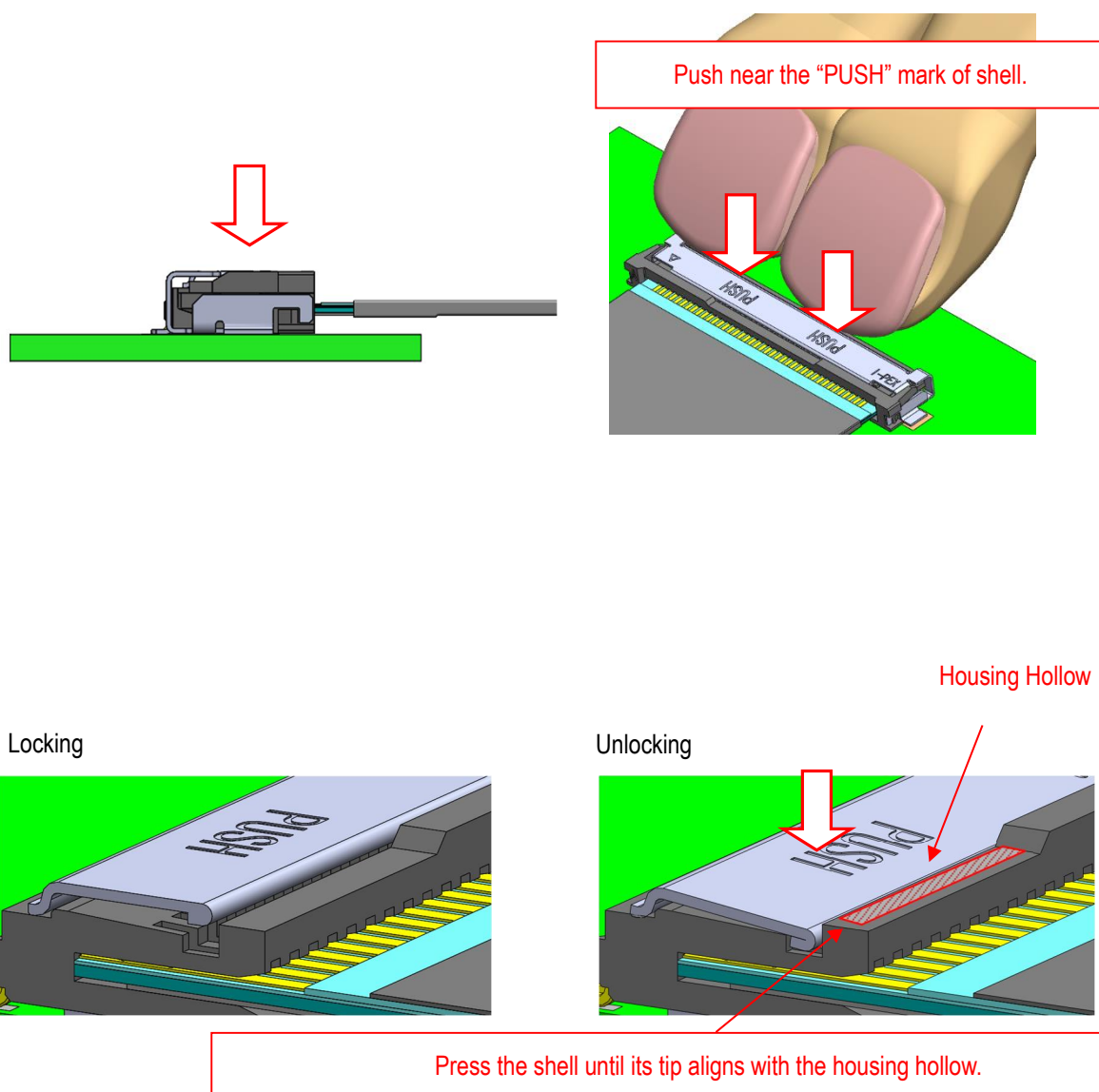


Fig.4-1 FFC Extracting Method 1

- ② Push the top surface of shell and extract FFC from the connector horizontally. (Fig.4-2)

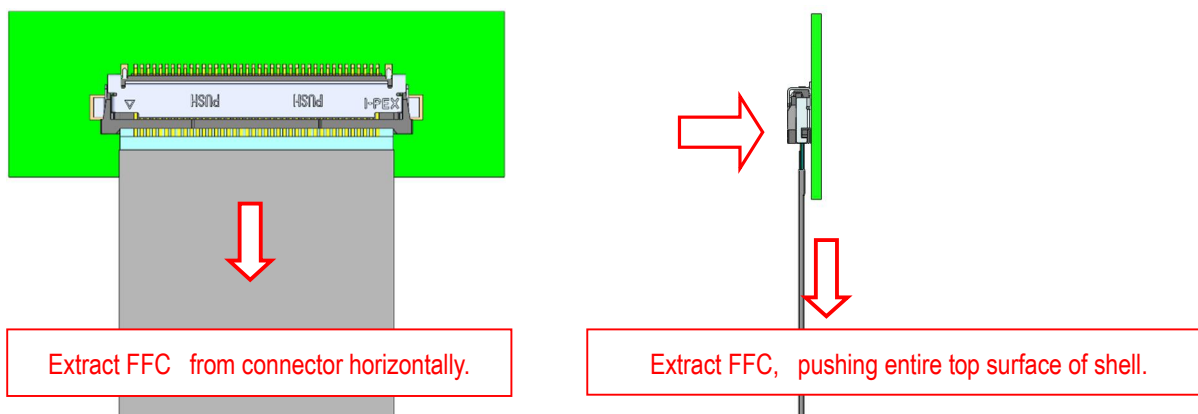


Fig.4-2 FFC Extracting Method 2

FFC shall be pulled out from the inserting slot horizontally.

Slanted extracting may cause deformations of FFC or damaged FFC pattern. (Fig.4-3)

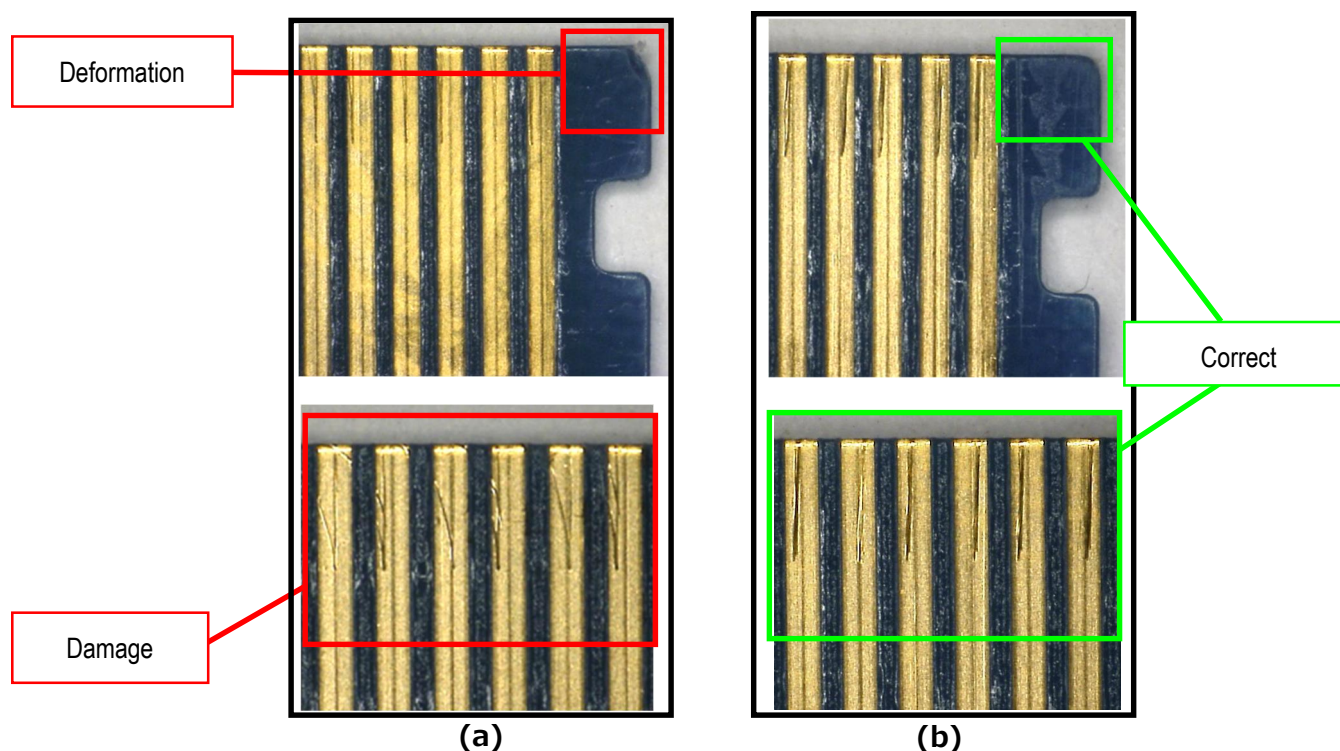


Fig.4-3 (a) Slantly extracted from the inserting slot.

(b) Horizontally extracted from the inserting slot.

<Caution 2>

Do not pull out the FFC while pushing one end of the shell top surface, as this may cause damage to the FFC (refer to Figures 4-4 and 4-5). Additionally, it is likely to result in slant extraction, as explained in the previous section. Ensure that you press the entire top surface of the shell when extracting the FFC.

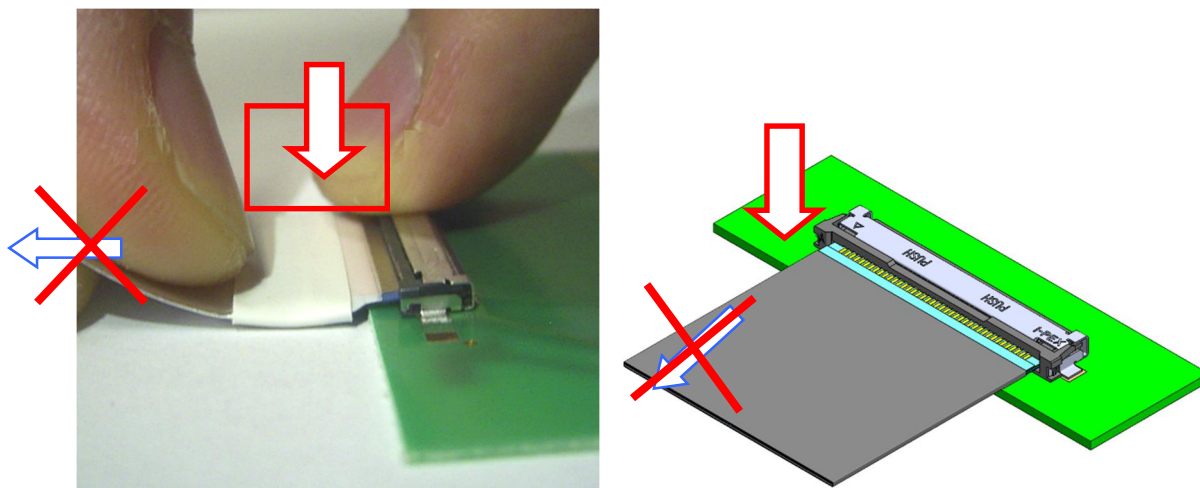


Fig.4-4 FFC Extract Method – Incorrect Example 1

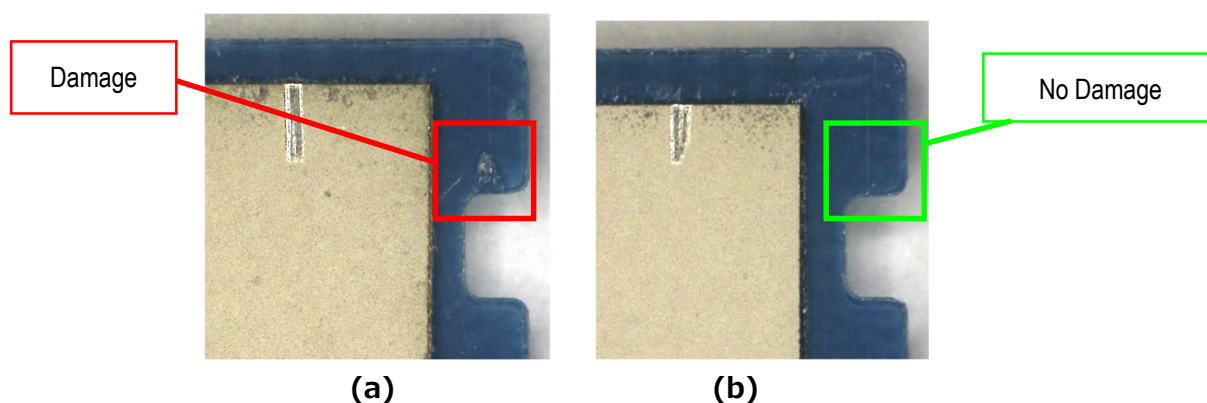


Fig.4-5

(a) Extracted FFC by Pushing One Side Edge of the Shell Top Surface.

(b) Extracted FFC by Pushing Entire Shell Top Surface.

<Caution 3>

Replace to new FFC if it were damaged as shown in photo4-5(a) or it may decrease FFC retention force.

【Cautions in handling the connector】

- ① Do not pull inserted FFC upward or downward.

It may cause the breakage of the connector or FFC. (See Fig. 4-6)

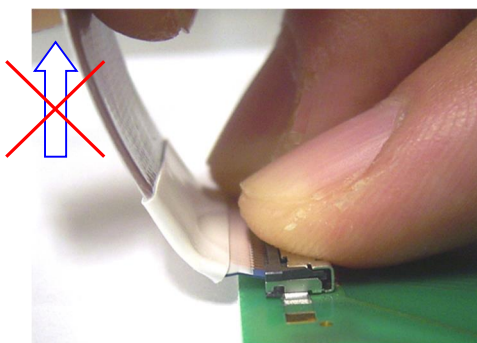


Fig.4-6 FFC Extracting Method – Incorrect Example 2

- ② In handling the cable, do not apply excessive force to the connector or FFC.

It may cause the connector or FFC breakage.

- ② Continuous stress to the connector shall not remain after inserting FFC.

It may cause the inserting defect or the breakage of connector or FFC.

- ④ Do not apply excessive force to the back surface of shell as shown in Fig.4-7.

It may cause the deformations of shell or the locking defect.

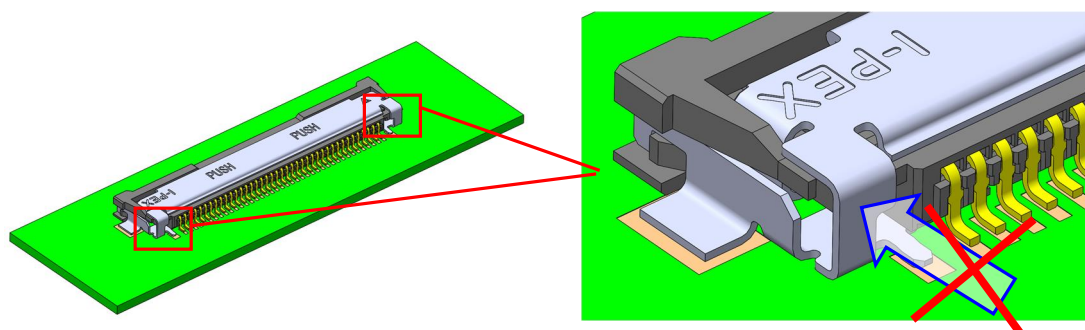


Fig.4-7 Connector Handling Method - Incorrect Example