

EVAFLEX® 5-SE

Part No.20526-0**E-#1

Instruction Manual

6	S25165	April 15, 2025	T. Minohara	M. Muro	T. Masunaga
5	S23228	July 18, 2023	M. Muro	-	H. Ikari
4	S19290	May 7, 2019	H. Kaneko	M. Muro	Y. Shimada
3	S18563	September 18, 2018	H. Kaneko	M. Muro	Y. Shimada
Rev.	ECN	Date	Prepared by	Checked by	Approved by

This manual provides the insertion & withdrawal method and cautions to handle our connector EVAFLEX 5-SE properly and safely.

◆ Connector

Product Name : EVAFLEX 5-SE
Part No. : 20526-0**E-#1

“ ** ” part shows the number of the connector position.

“ # ” part shows the variation. Please refer to the drawing for details.

【Names of each part of the connector】

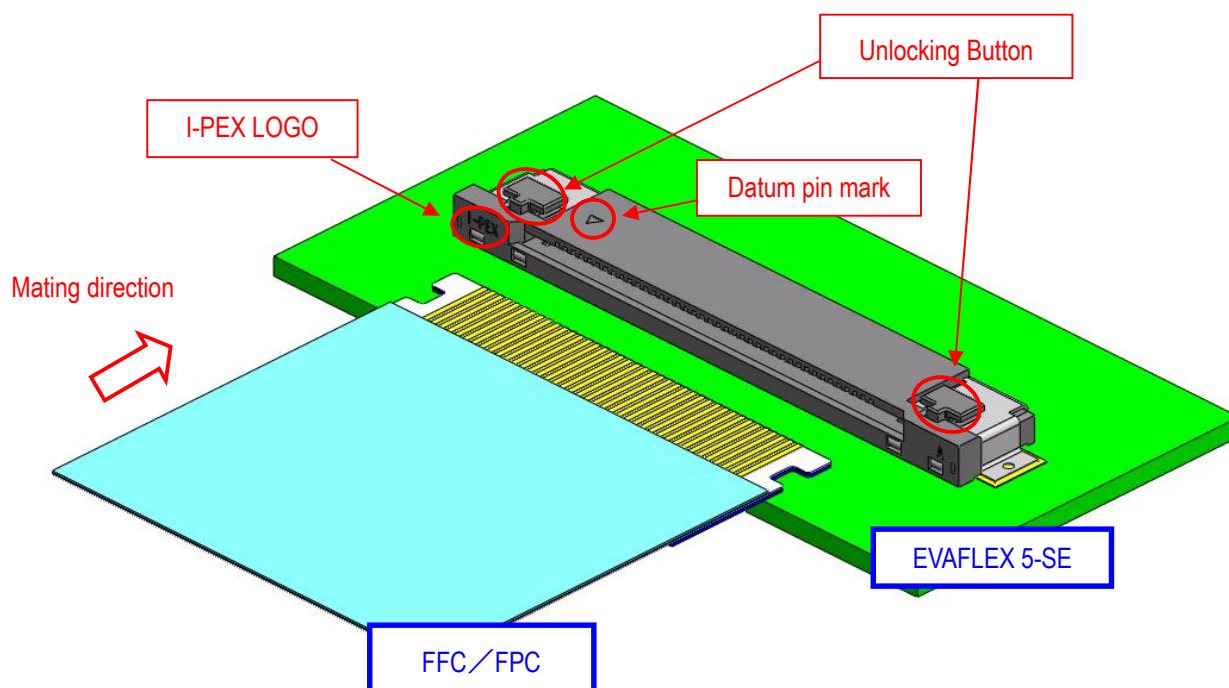


Fig. 1 Names of each part of the connector

【FFC/FPC Insertion Method】

- ① Please set FFC/FPC to the connector horizontally with its pattern on the upside as shown in Fig. 2-1

※EVAFLEX 5-SE is top contacting type only. Please set FFC/FPC with its pattern on the upside.

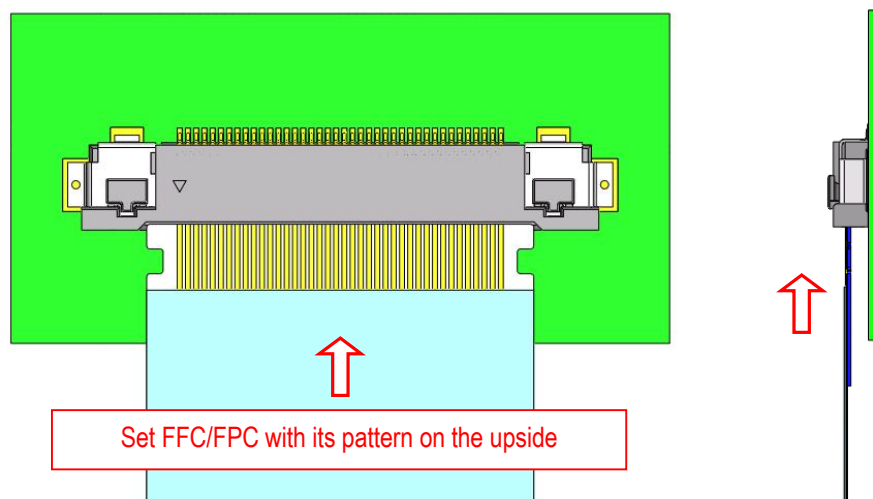


Fig. 2-1 FFC/FPC inserting method 1

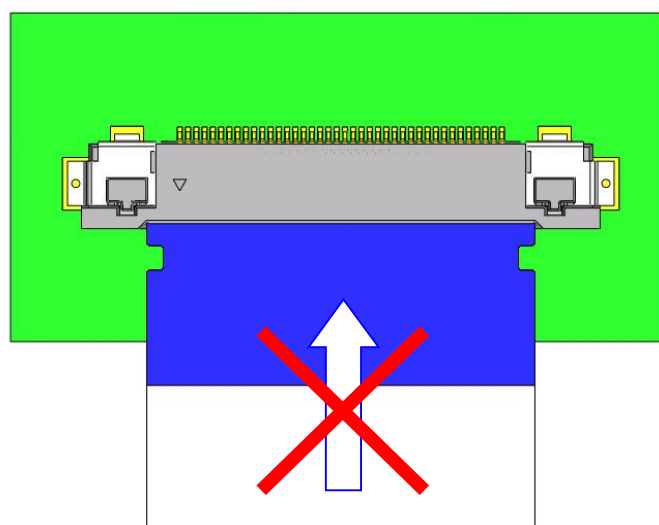


Fig. 2-2 FFC/FPC insertion - Bad example 1

EVAFLEX 5-SE is top contacting type only.

Please refrain from inserting FFC/FPC with its pattern on the downside. (Fig. 2-2)

- ② Please insert FFC/FPC to the connector horizontally and push all the way in. (Fig. 2-3)

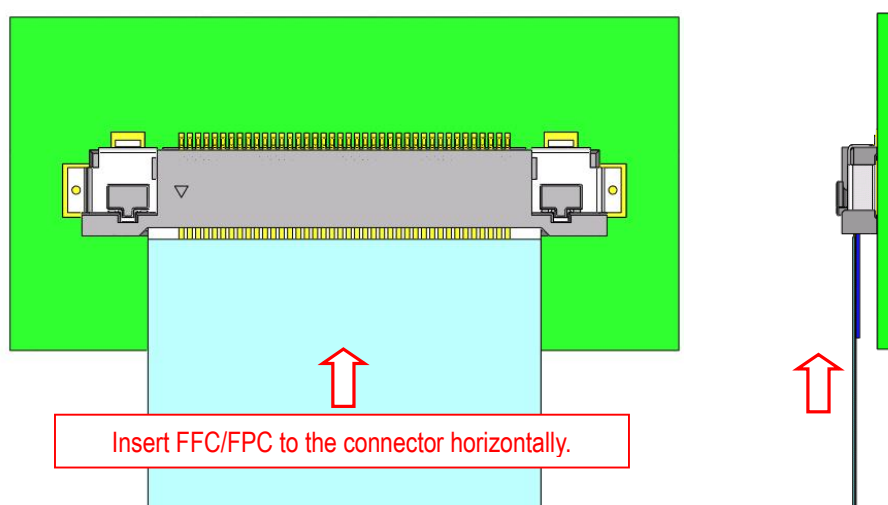


Fig. 2-3 FFC/FPC inserting method 2

<Caution 1>

Please insert FFC/FPC horizontally.

If FFC/FPC is slanted as fig. 2-4, there is possibility to fail to be locked.

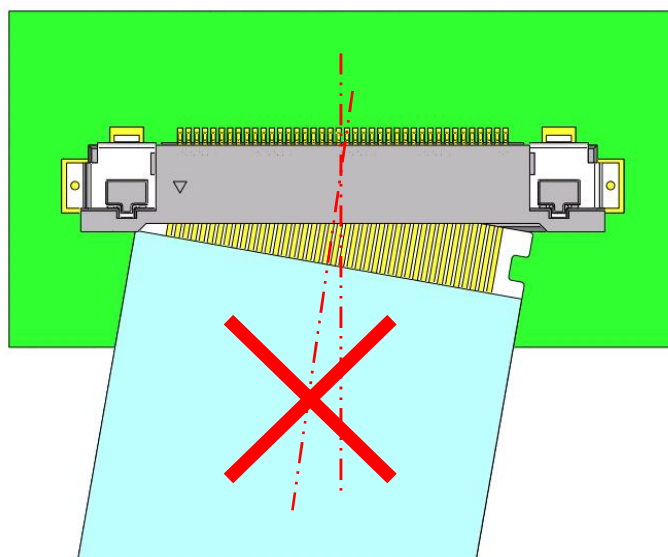


Fig. 2-4 FFC/FPC insertion - Bad example 2

<Caution 2>

Please insert FFC/FPC horizontally.

If FFC/FPC is slanted as fig. 2-5, there is possibility of breakage of the connector or FFC/FPC.

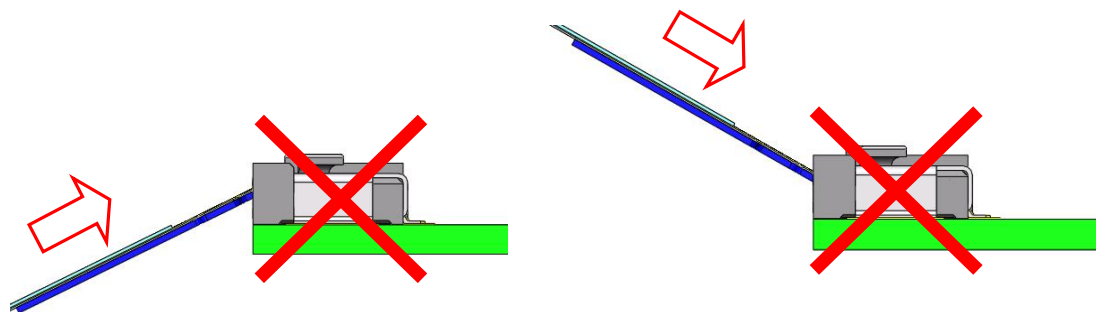


Fig. 2-5 FFC/FPC insertion - Bad example 3

【FFC/FPC Withdrawal Method】

- ① Push FFC/FPC all the way in the insertion direction.

※A notch part of FFC/FPC is caught on a lock when I do not push it and may not take it out.

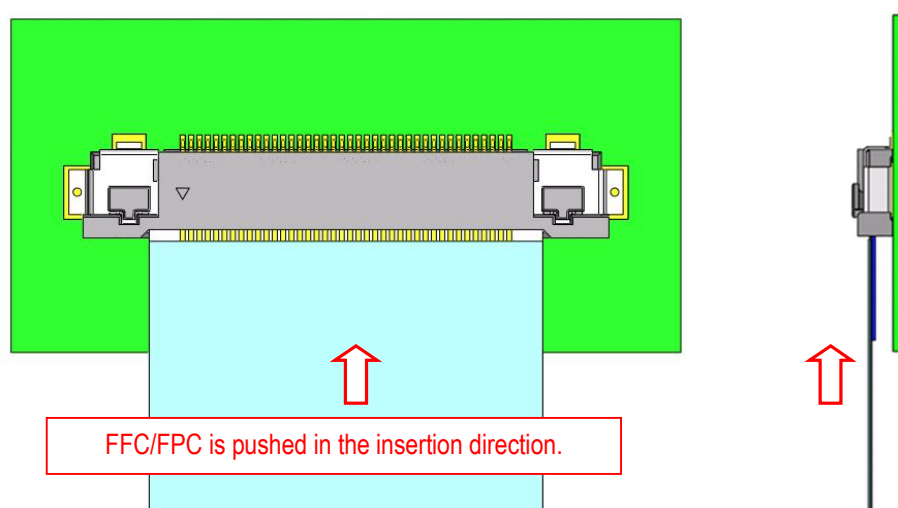


Fig. 3-1 FFC/FPC withdrawing method 1

- ② Please press both release buttons on connector's upside at the same time from above to release the lock.

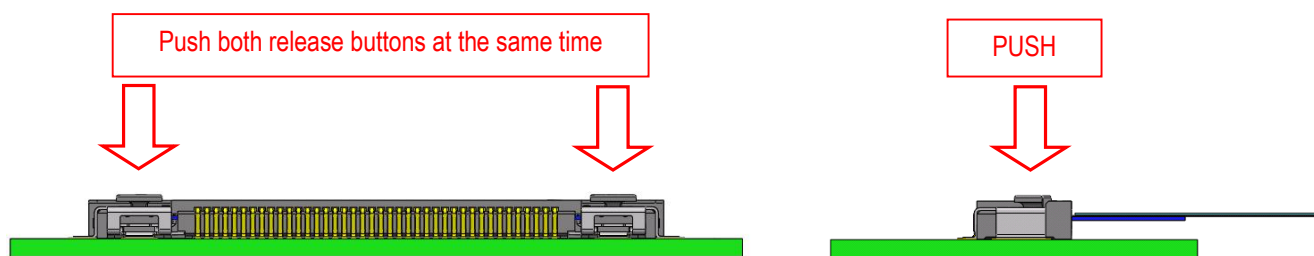


Fig. 3-2 FFC/FPC withdrawing method 2

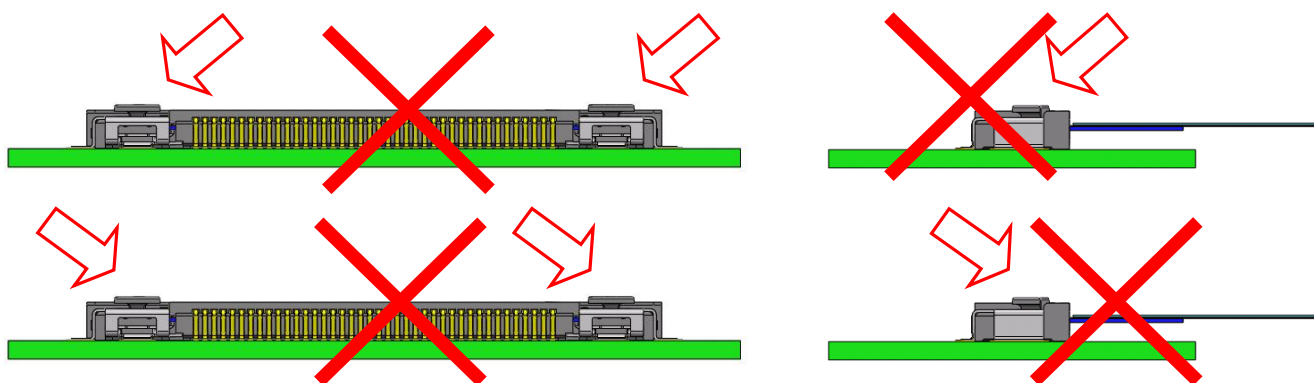


Fig. 3-3 FFC/FPC withdrawing - Bad example 1

- ③ Keeping the release button pressed, withdraw FFC/FPC from the connector horizontally. (Fig. 3-4)

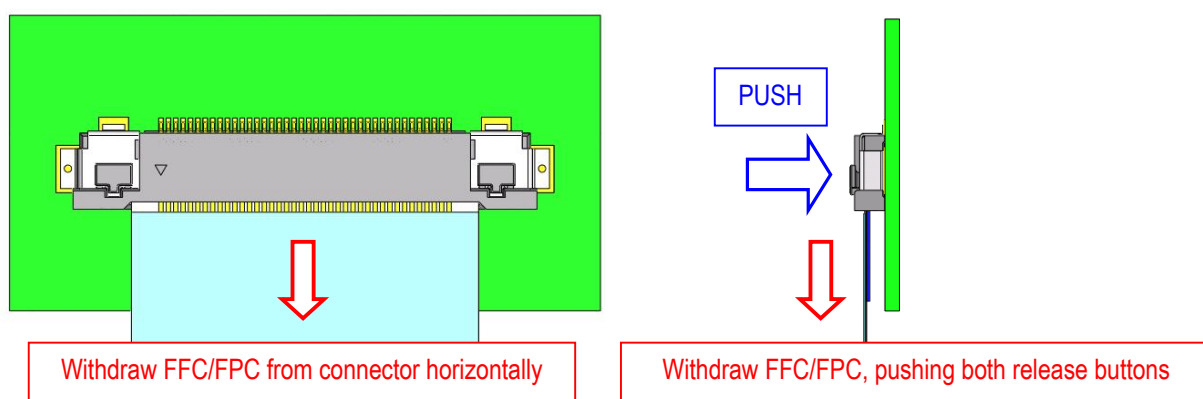


Fig. 3-4 FFC/FPC withdrawing method 3

Please withdraw FFC/FPC from connector horizontally.
Withdrawing with rotation (Fig. 3-4) may damage to FFC/FPC pattern, so please avoid as much as possible.
In case withdrew with rotation, please check damage of FFC/FPC pattern and use. (Photo. 3-1)

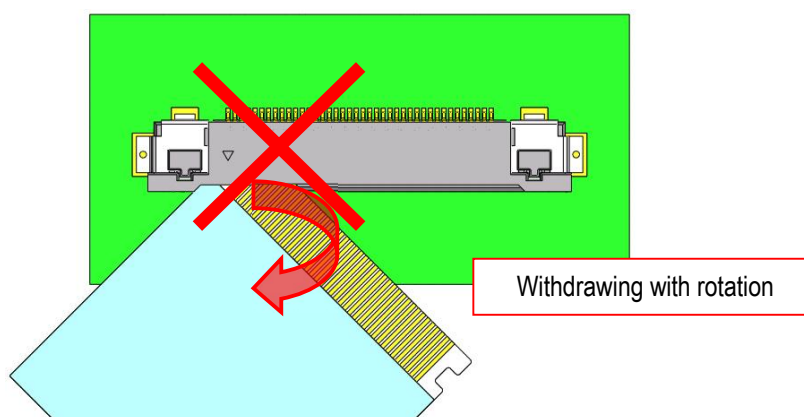


Fig. 3-5 FFC/FPC withdrawal – Bad example 2

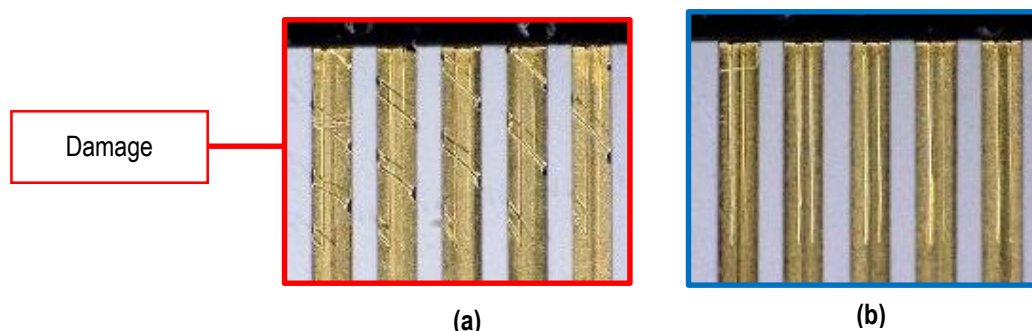


Photo. 3-1-(a) Withdrawing with rotation. (b) Withdrawing FFC/FPC horizontally.

<Caution 2>

Please pay attention to withdrawing FFC/FPC with pushing one release button only. It may cause deformation of FFC/FPC. (See Photo. 3-2, 3-3) Also, when pushing one release button only, withdrawing easily becomes the rotated one. Therefore, please press both release buttons and withdraw FFC/FPC.

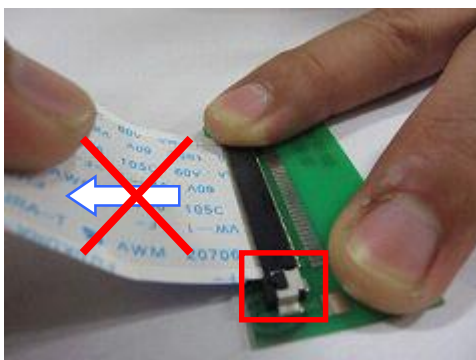


Photo. 3-2 FFC/FPC withdrawal – Bad example 3

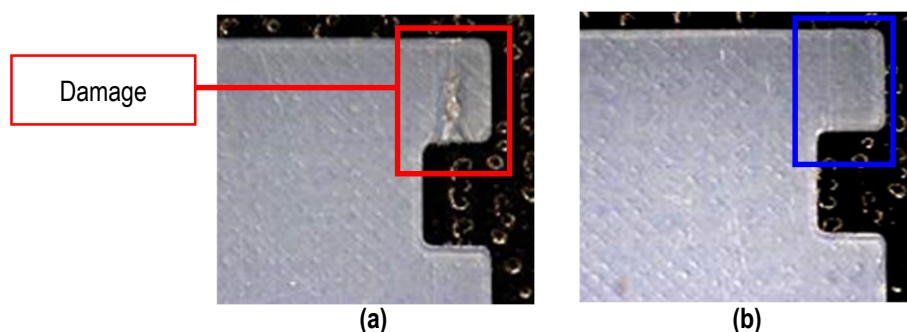


Photo. 3-3 Withdrawing FFC/FPC with pushing (a) one release button only or (b) both release buttons.

【Cautions in handling the connector】

- ① Please do not pull mated FFC/FPC upward or downward.
It may cause the breakage of the connector or FFC/FPC. (See Photo. 4-1)

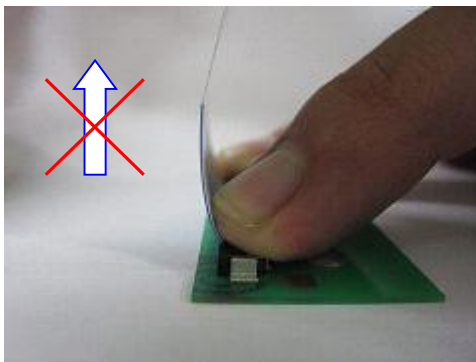


Photo. 4-1 FFC/FPC withdrawal – Bad example 4

- ② In handling the FFC/FPC, please pay attention not to apply excessive force to the connector or FFC/FPC.
It may cause the connector or FFC/FPC breakage.
- ③ Continuous stress to the connector shall not remain after mating FFC/FPC.
It may cause the mating defect or the breakage of connector or FFC/FPC.