

CABLINE® V

Plug Part No. 20345-##*T-##

Receptacle Part No. 20347-##*E-###

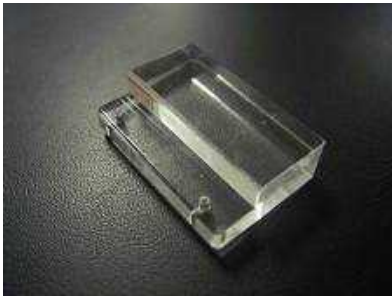
Instruction Manual

3	S23177	June 13, 2023	S.Yamaguchi	T.Tanigawa	H.Ikari
2	S18165	March 7, 2018	K.Ikeshita		T.Matsumoto
1	S13356	September 5, 2013	H.Mashima	J.Tateishi	E.Kawabe
0	S12110	March 9, 2012	H.Mashima	J.Tateishi	T.Harada
Rev.	ECN	Date	Prepared by	Checked by	Approved by

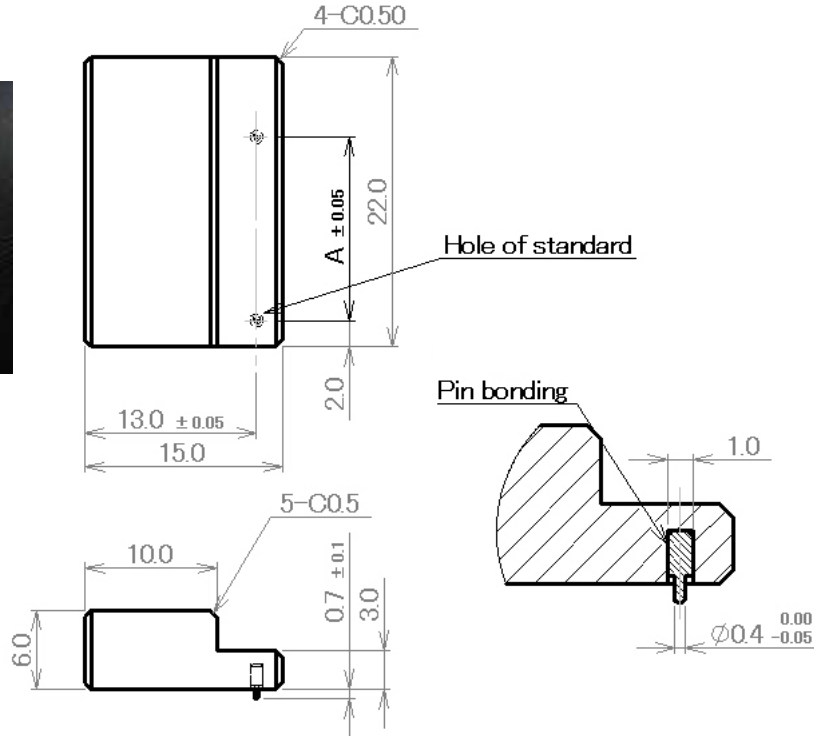
It has a purpose of using this connector safely and the insertion of the connector and the procedure and note point of the evulsion are described.

【Insert / pull out JIG】

Use JIG (reference) like the photograph to avoid a stress to the root of the CABLE connector when inserting or pulling out. The special hitch shape of JIG is installed in the PLUG connector. (The following draw)

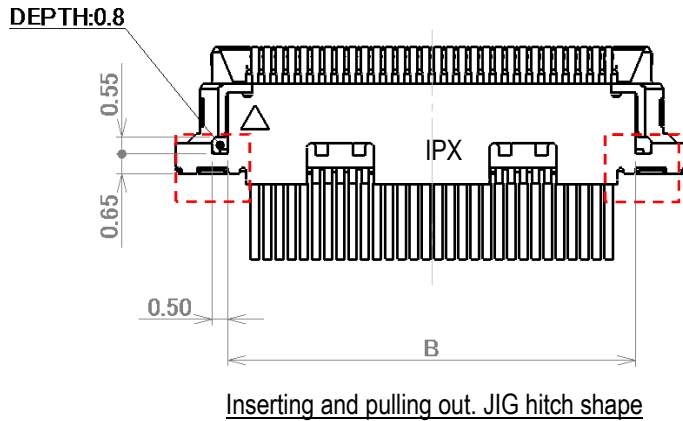


Pos.	A
10P	5.9
15P	7.9
20P	9.9
25P	11.9
30P	13.9
35P	15.9
40P	17.9



Recommend insert and pull out JIG

Pos.	B
10P	5.4
15P	7.4
20P	9.4
25P	11.4
30P	13.4
35P	15.4
40P	17.4



Inserting and pulling out. JIG hitch shape

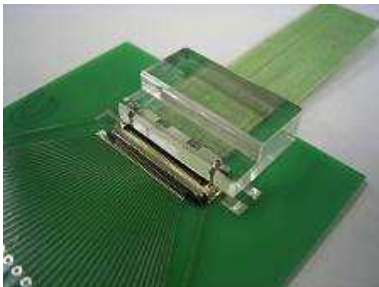
【Inserting procedure.】

- ① It inserts a plug-in connector in RECE temporarily surely.



Temporarily condition

- ② It sets JIG in the PLUG connector.



JIG sets condition

- ③ Insert for connector

Horizontal direction

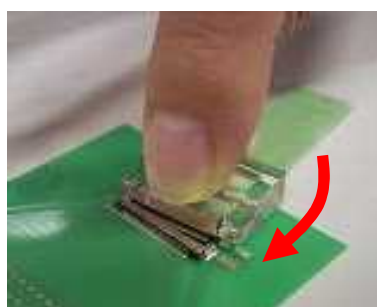
It inserts PLUG connector in the receptacle connector of the side of the substrate in parallel like the below photograph .

We request the style to be surely done the temporary insert of ①. The chape reduces by doing temporary insert.

Insert direction

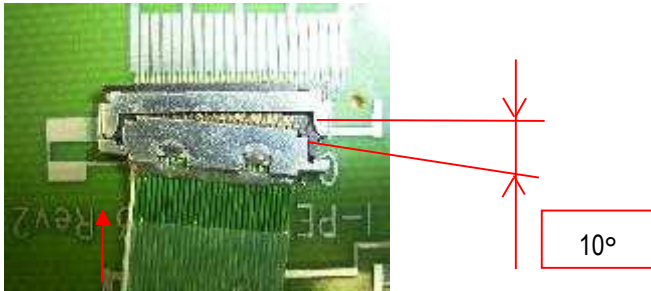


Parallel insert OK



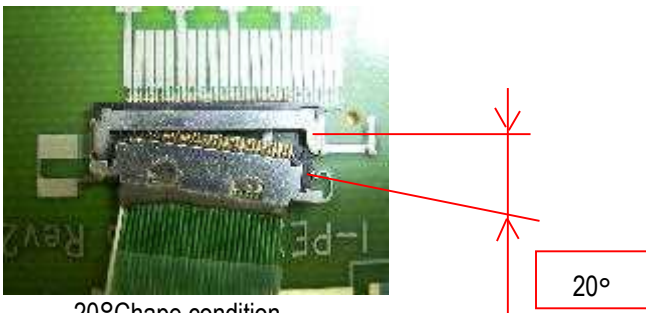
Chape insert NG condition

We request a chape corner at equal to or less than 10 ° like the photograph below to use this connector safely. When inserting only a side from the condition of the temporary shine, the getting MAX. value becomes 10 ° like the photograph below. If being equal to or less than 10 °, the transformation of the connector doesn't occur.

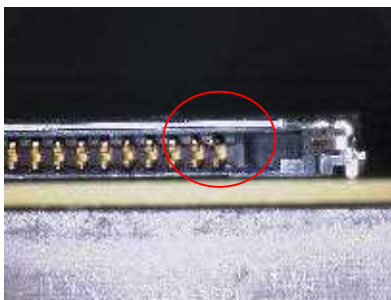


10°Chape condition

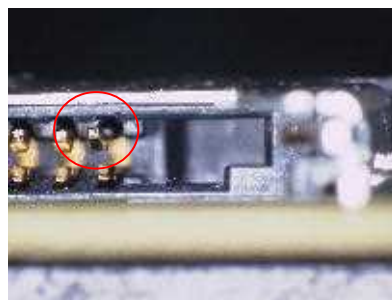
When making insert by force in the chape corner of equal to or more than 20 ° in the temporary insert condition like the below photograph There is fear to transform (Below photograph) the terminal of the connector of the side of the substrate in the resin part of plug connector of the side. **The temporary insertion goes, being always parallel.**



20°Chape condition



Receptacle connector C/T transform



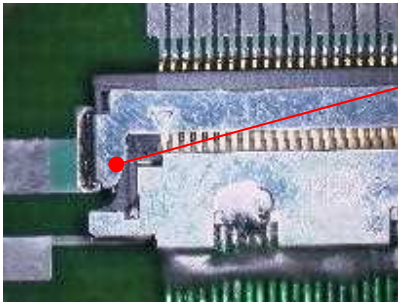
expand left photo

Vertical Direction

Like the Below photograph , an insertion guide is set to REC. SHELL.

We request insertion along the guide.

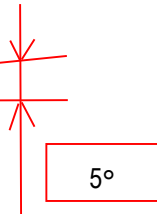
If it is possible to insert along the guide, the transformation of the connector doesn't occur.



Guide : SHELL back side

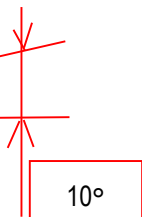
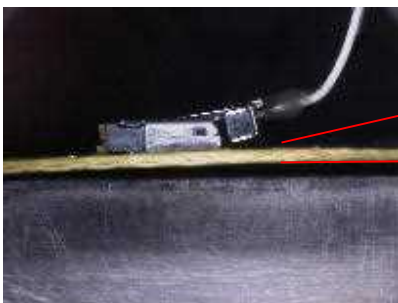
We request a chape corner at equal to or less than 5 ° like the photograph below to use this connector safely.

If being equal to or less than 5 ° , the transformation of the connector doesn't occur.



5°Chape condition

When the equal to or more than 10 ° chape occurs like the photograph below,
because there is fear that the shell of the connector of the side of the substrate is transformed,
when re-applying, reconfirm and use the condition of the shell transformation.



10°Chape condition

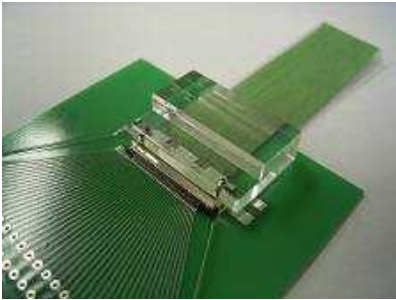


Shell turn up

Shell transform

【Connector pull out】

- ① It sets JIG in the PLUG connector.



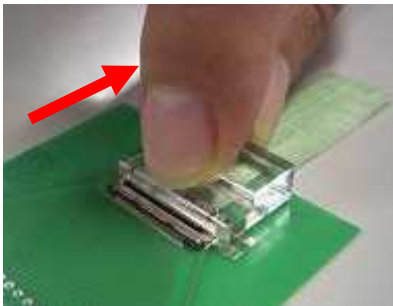
Sets for JIG condition

- ② Pull out connector

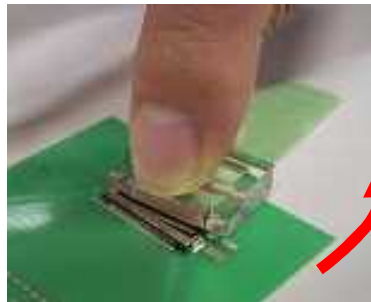
Horizontal direction

There is to pull out in parallel in the PLUG connector to the RECE connector like the photograph.

Pull out direction

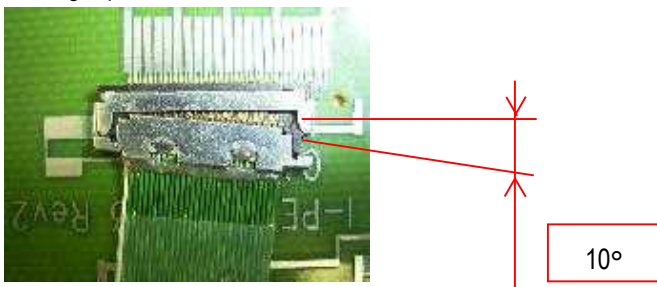


parallel pull out OK condition



Chape pull out NG condition

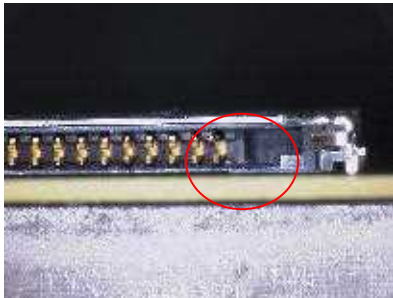
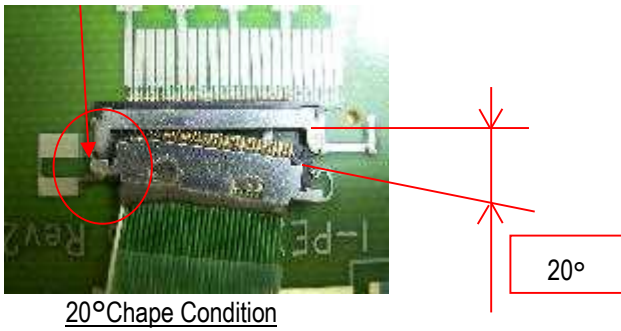
We request a chape corner at equal to or less than 10° like the photograph below to use this connector safely. If being equal to or less than 10°, the transformation of the connector doesn't occur.



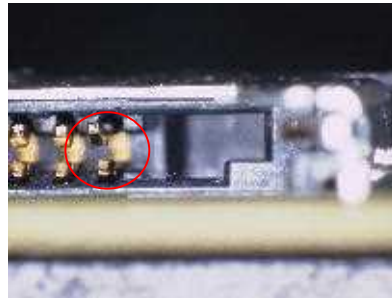
10°Chape condition

The side of the PLUG connector is equal to or more than 20° in the condition which was stuck on the RECE connector like the below photograph. When the chape occurs, reconfirm the condition of the RECE connector and the PLUG connector and the resin part of the PLUG connector use because there is fear to transform the terminal of the RECE connector.

It turns this place to the axis.



Receptacle connector C/T transform

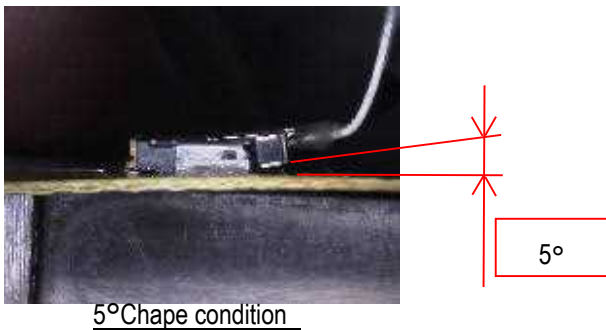


expand left photo

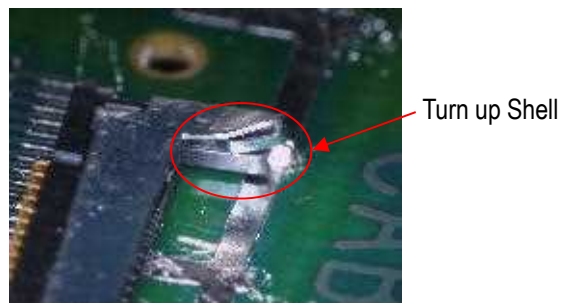
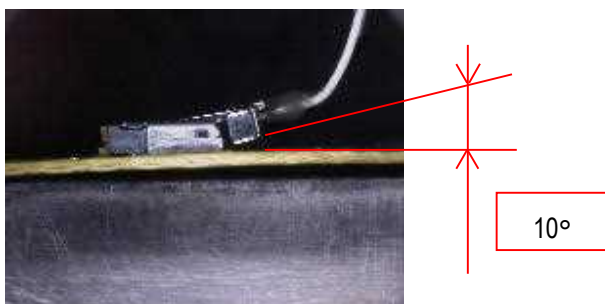
Vertical Direction

We request a chape corner at equal to or less than 5 ° like the photograph below to use this connector safely

If being equal to or less than 5 ° , the transformation of the connector doesn't occur.



When the equal to or more than 10 ° chape occurs like the photograph below, because there is fear that the shell of the connector of the side of the substrate is transformed, when re-applying, reconfirm and use the condition of the shell transformation.



Shell transform

- ※ Because it is possible, being broken, CABLE resign from the connector pulling-out shine to have by having CABLE in the hand. When shining in the pulling-out, there is fear that the big power occurs, that CABLE is local and that a core line is broken. Specifically, in case of diagonal pull in some cables, be careful sufficiently.



NG



NG