

CABLINE®-CA

Part No. Plug:20633-#**T-0#S

Receptacle:20525-#**E-0##

Instruction Manual

8	S21243	May 27, 2021	M.Nakamura	T.Masunaga	H.Ikari
7	S21152	April 1, 2021	M.Nakamura	T.Masunaga	H.Ikari
6	S18408	June 29, 2018	M.Nakamura		Y.Shimada
5	S17941	December 28, 2017	H.Aoki	T.Kurachi	Y.Shimada
Rev.	ECN	Date	Prepared by	Checked by	Approved by

This manual provides the insertion & withdrawal methods and cautions to handle CABLINE-CA connector properly.

【Connector Name, Part number】

◆ The cable side connector

Product Name : CABLINE-CA Plug Cable Assembly

Part No. : 20633-#**T-0#S

1: With Pull bar

2: Without Pull bar

◆ The PCB side connector

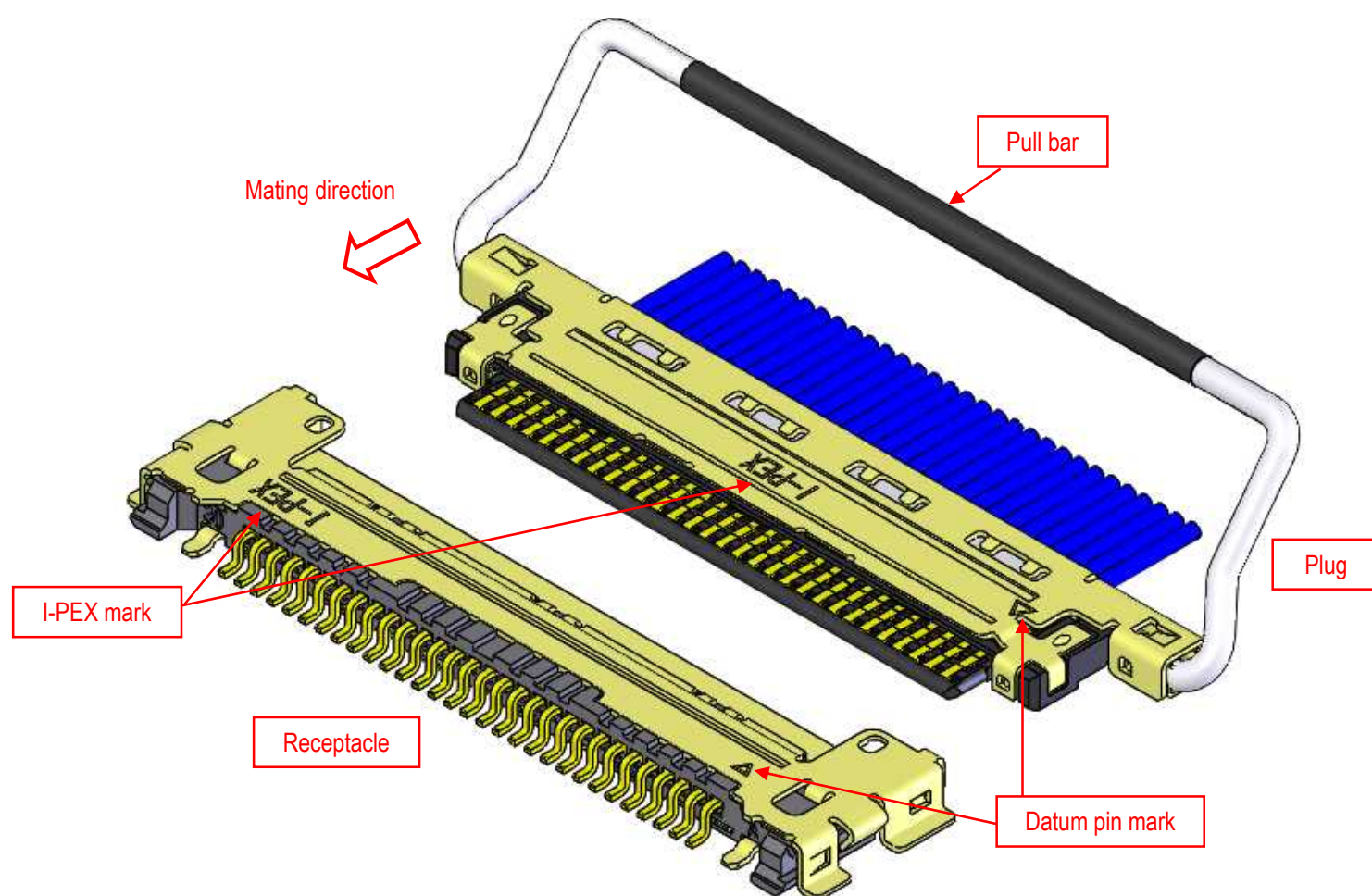
Product Name : CABLINE-CA Receptacle

Part No. : 20525-#**E-0# #

“ ** ” part shows the number of the connector position.

“ # ” part shows the variation. Please refer to the drawing for details.

【Names of each part of the connector】



【コネクタ挿入手順】

- ① Rotate the Pull bar toward the I-PEX mark side of the plug connector. (Fig.1)

※With Pull bar only

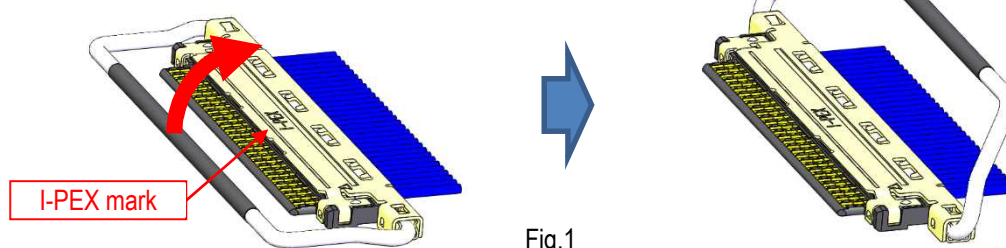


Fig.1

- ② Set the datum pin mark of the receptacle connector and the plug connector face each other.
※For the connector without Datum pin mark. Please set so that I-PEX mark of the cable connector is upper side.

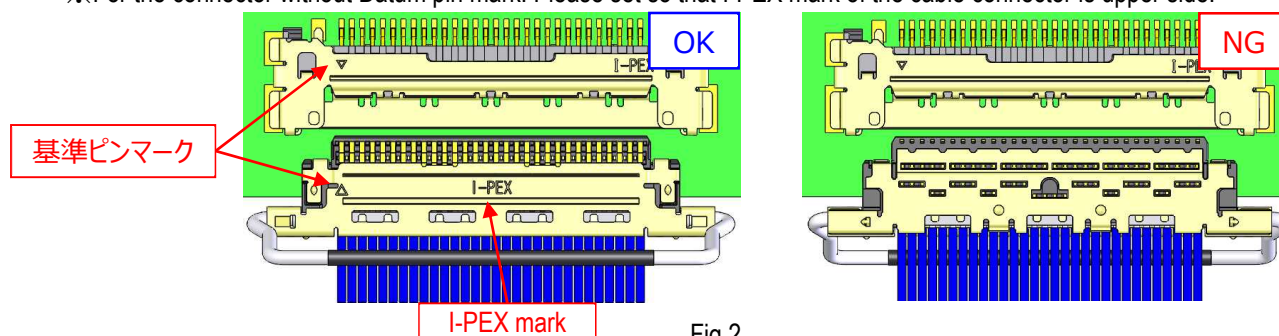


Fig.2

- ③ Pre-insert the plug connector into the receptacle connector.

The insertion angle in the height direction is within 8° as shown in Fig.3.

Pre-insert until the plug connector is parallel to the receptacle connector as shown in Fig.4

※Pre-insert without applying excessive load in the insertion direction until both sides of the plug connector overlap the receptacle connector.

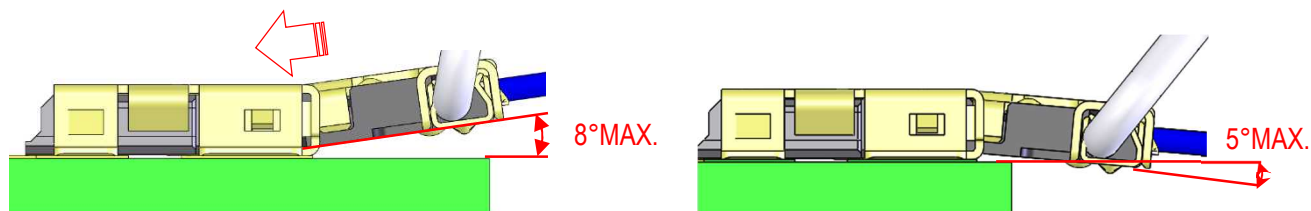
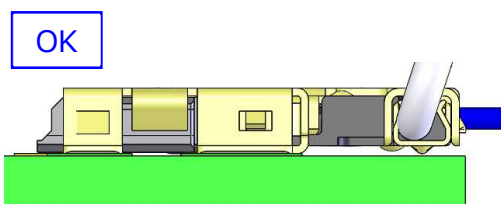
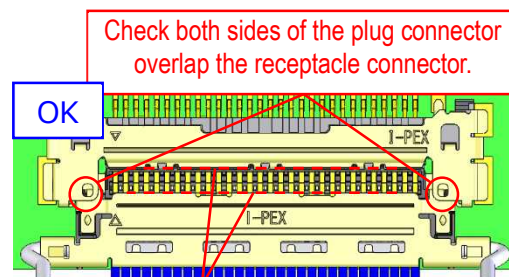


Fig.3

Pre-insert

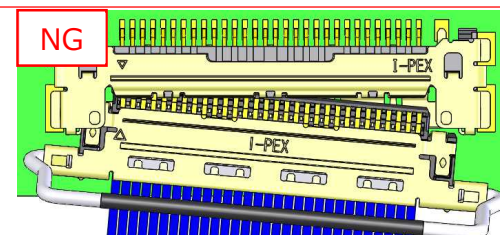


OK



Check both sides of the plug connector overlap the receptacle connector.

Check the plug connector and receptacle connector are parallel.



NG

Fig.4

<Caution 1>

If Pre-insert is NG, repeat step ③.

- ① Insert the plug connector into the receptacle connector.
Push both ends of plug connector horizontally as shown in Fig.5 and confirm there is no gap.

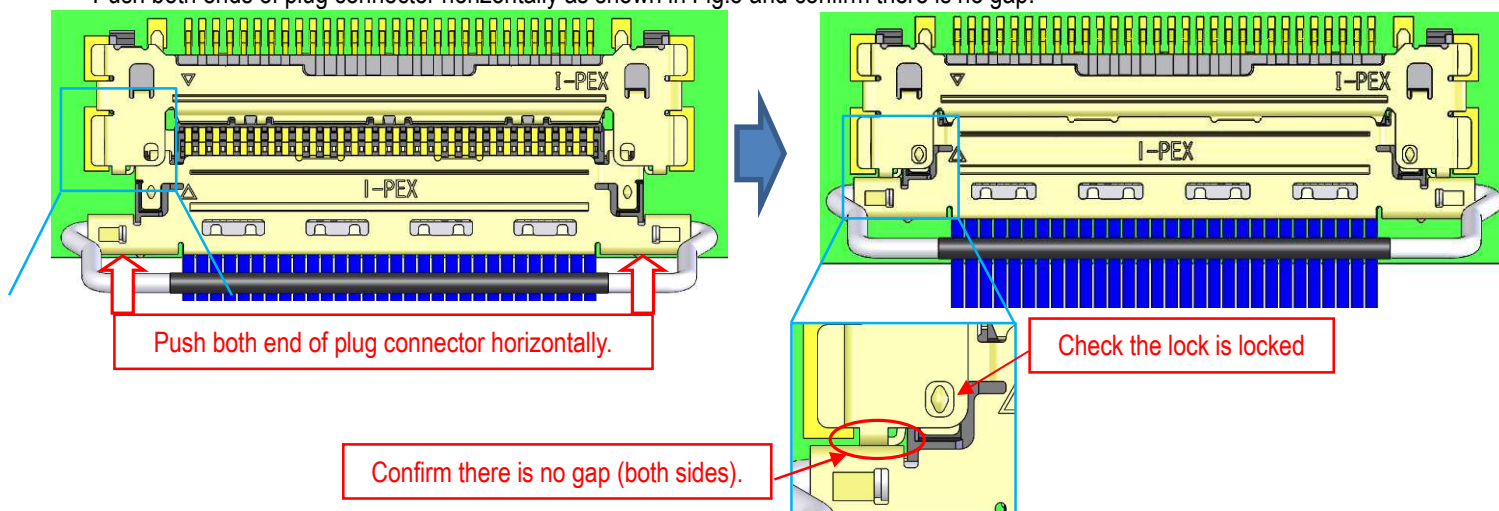


Fig.5

<Caution 2>

If you push one side, the mating may be incomplete as shown in Fig. 6.

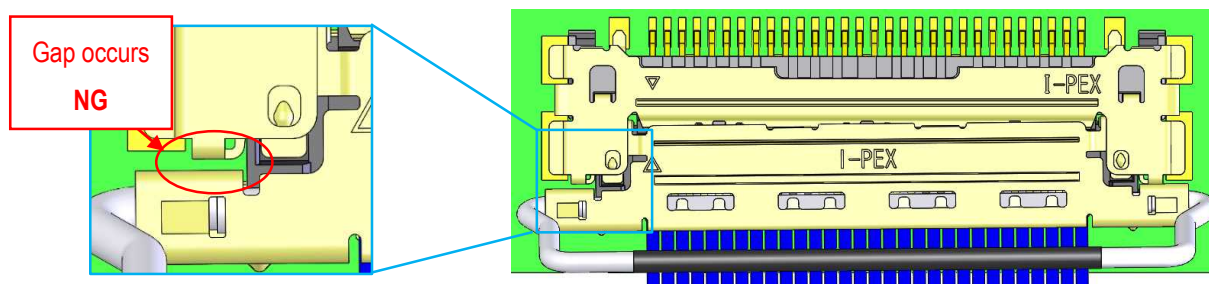


Fig.6

<Caution 3>

Don't insert the plug connector into the receptacle connector the state shown in Fig.7.
The connector may be damaged and no conductivity.

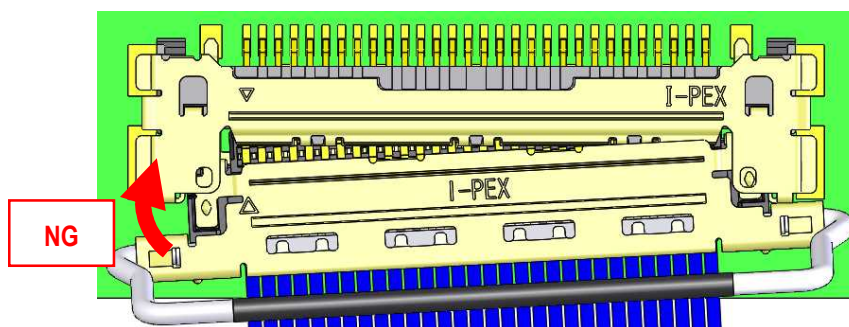


Fig.7

Don't insert the plug connector into the receptacle connector before it has not been pre-insert as shown in Fig.8
The connector may be damaged.



※With Pull bar only



Please don't apply force toward the PCB side to the plug connector in insertion.
PCB will be damaged as shown in Fig.10 and it may cause the disconnection of the pattern or the short.

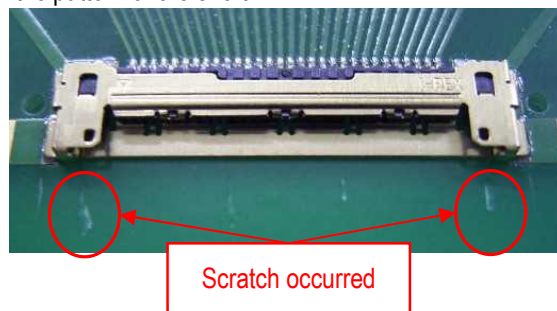


Fig.10

- ※With Pull bar only



【コネクタ抜去手順】

- ① Lift one of the circled positions of the pull bar upward to release the lock with the Receptacle connector.
Then, turn Pull bar as shown in the bottom-right figure.

※With Pull bar only

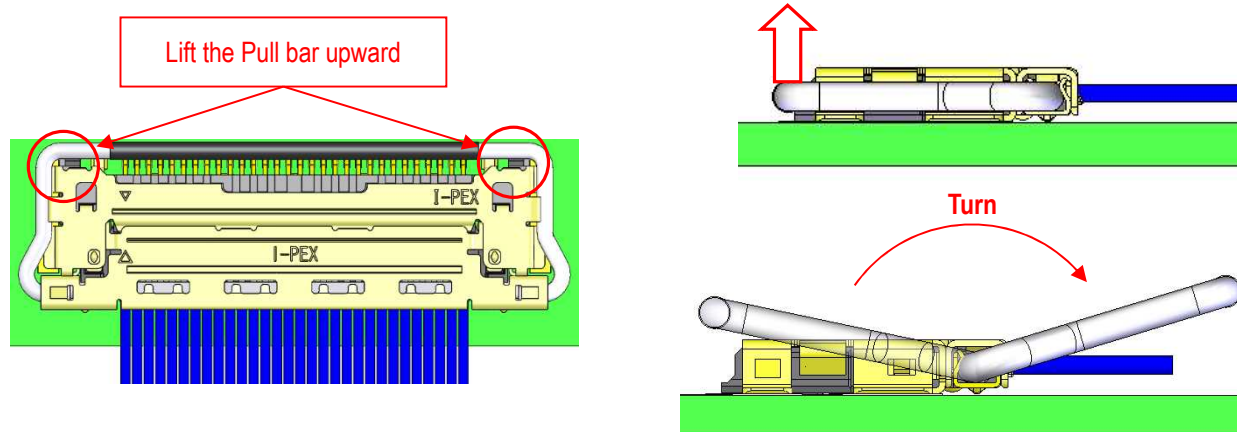


Fig.12

<Caution 7>

In releasing the lock, please do not use the insulation coated part of the Pull bar.

The insulation coated part may be damaged and there is possibility to cause short between the receptacle connector's contact and the Pull bar.

Moreover, please don't use for un-mating. If the insulating part of the Pull bar is used for un-mating, the Pull bar may be deformed.

※With Pull bar only

Please do not use the insulation coated parts of the Pull bar to release the lock.

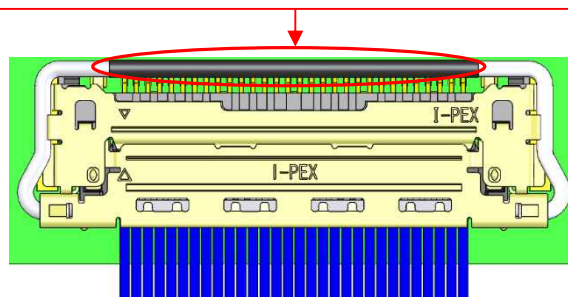


Fig.13

- ② When un-mating, pull both sides of the plug connector horizontally as shown in Fig.14.

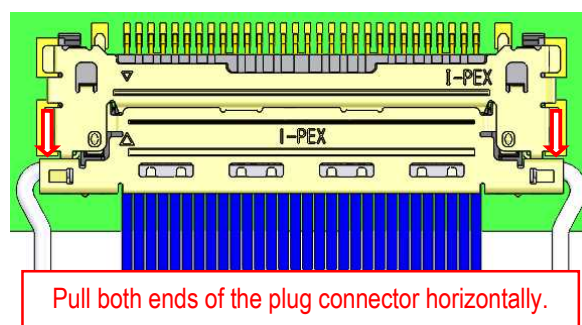


Fig.14

<Caution 8>

Please don't pull out the plug connector at an angle to the receptacle connector.

Please pull out both ends of the plug connector horizontally so that the plug connector does not become slanted during removal.

If you do not, the connector may be damaged.

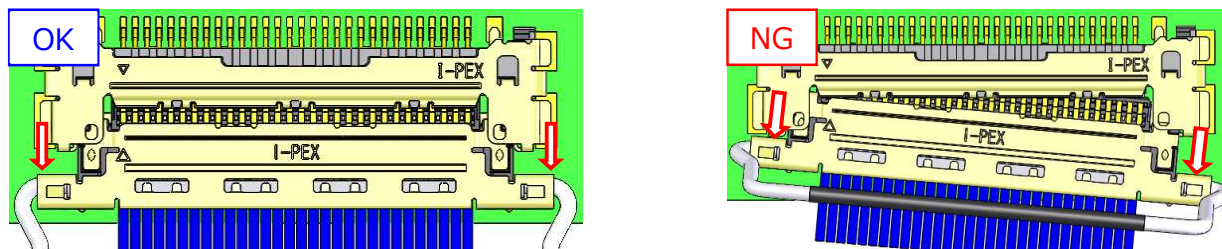


Fig.15

<Caution 9>

Please don't pull out the plug connector by pulling the cable. It may cause the cable damage.

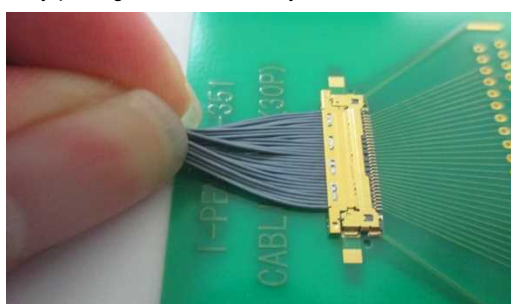
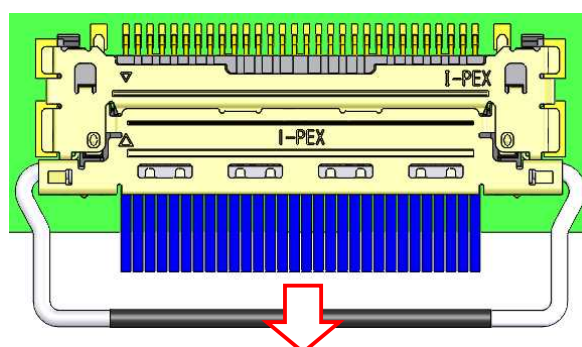


Fig.16

<Caution 10>

Please don't pull out the plug connector by pulling the Pull bar. It may cause the Pull bar and connector deformation.

※With Pull bar only



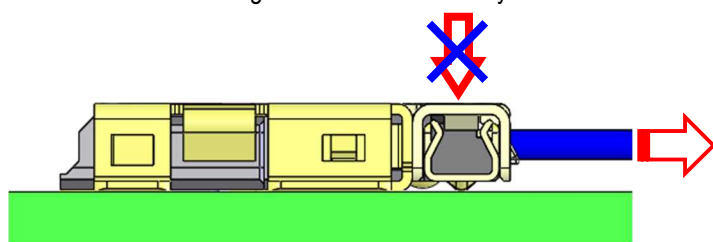
Please don't pull out the plug connector by pulling the Pull

Fig.17

<Caution 11>

Please don't pull out the plug connector while applying force in the direction of the board.

PCB will be damaged like below and it may cause the disconnection of the pattern or the short.



Scratch occurred

Fig.18

【Cautions in handling the connector】

- ① Please don't pull out the cable or the Pull bar of the mated plug connector to the vertical direction.
It may cause the receptacle connector's deformation.

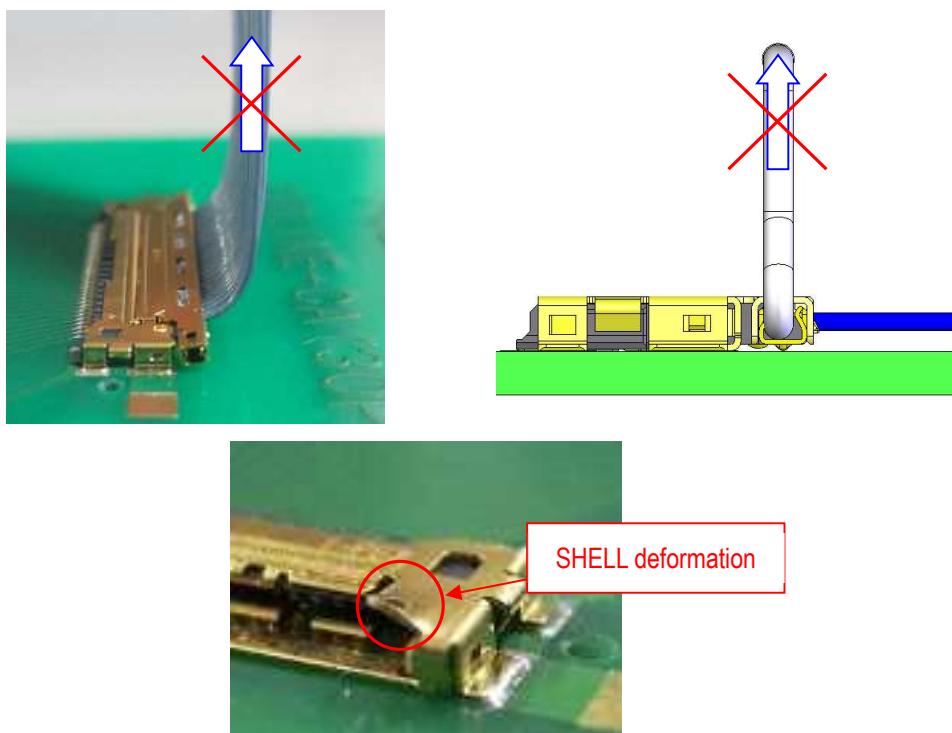


Fig.19

- ② In handling the cable, please pay attention not to apply excessive force to the connector or the cable.
It may cause the connector or the cable breakage.

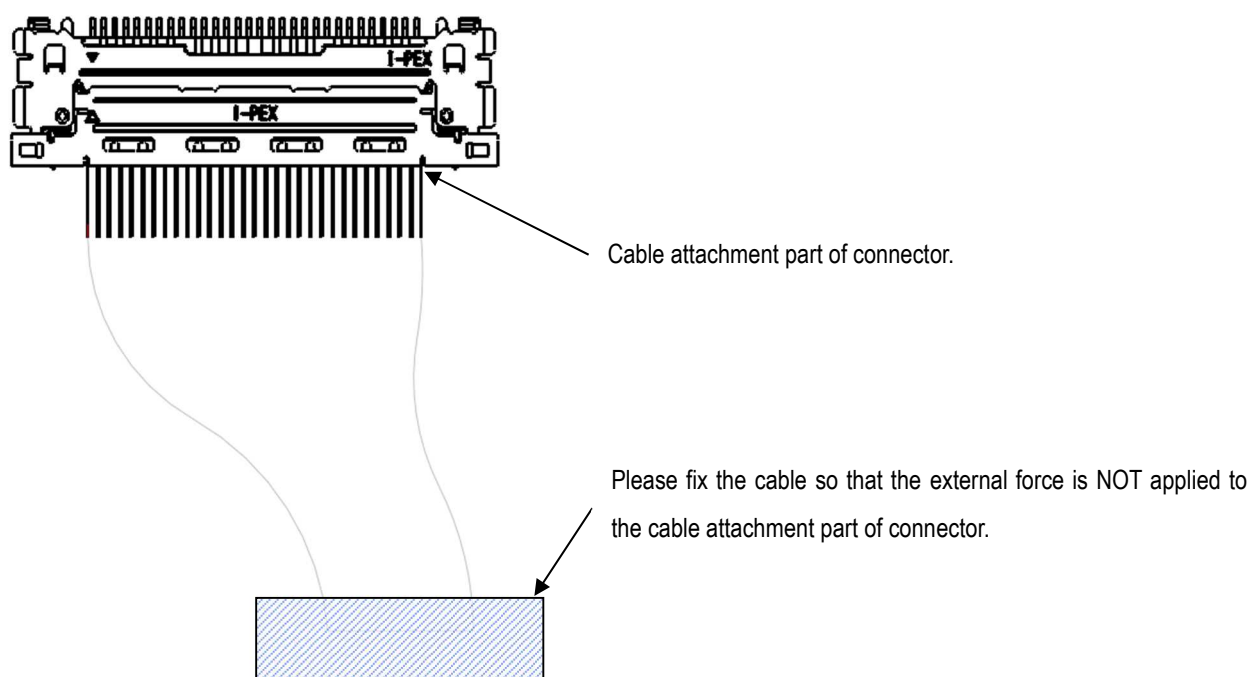


Fig.20

- ③ Continuous stress to the connector should not remain after assembly.
It may cause the mating defect or the connector breakage.

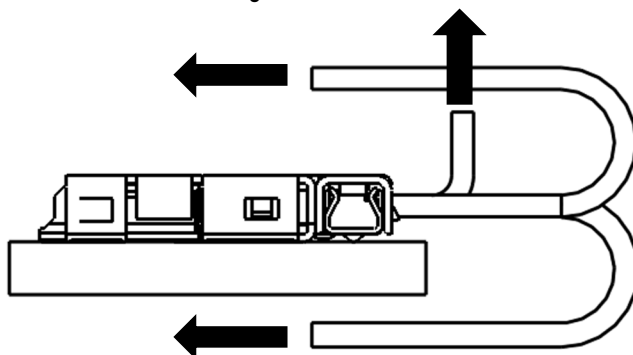


Fig.21

【Caution when using Plug for electrical inspection】

If the plug is inserted into the receptacle while the plug housing is damaged, the connector may be damaged or short-circuited due to pitch deviation.

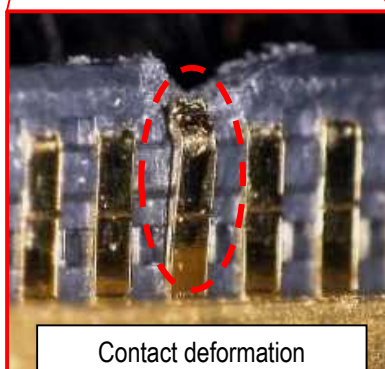
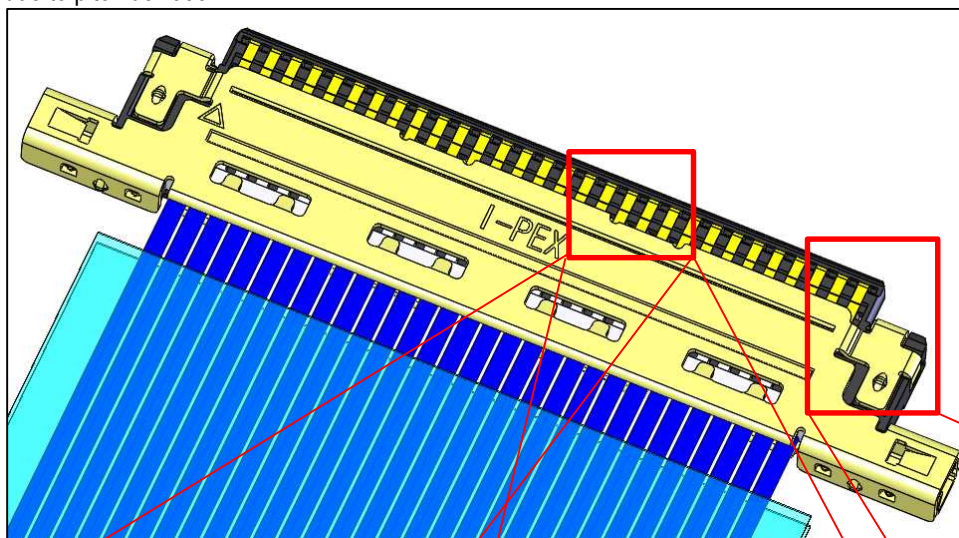


Fig.22