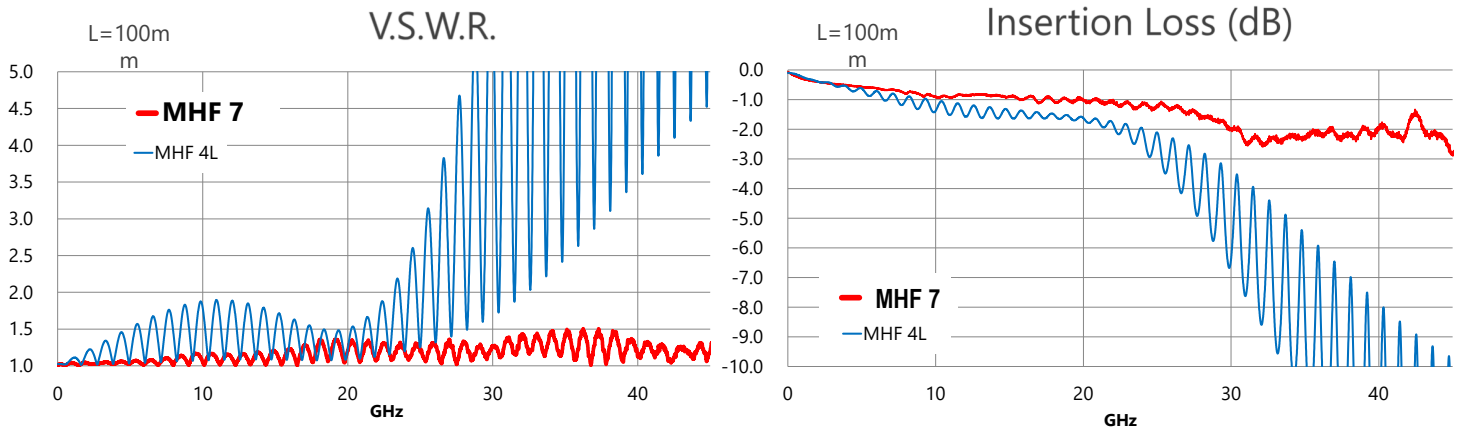




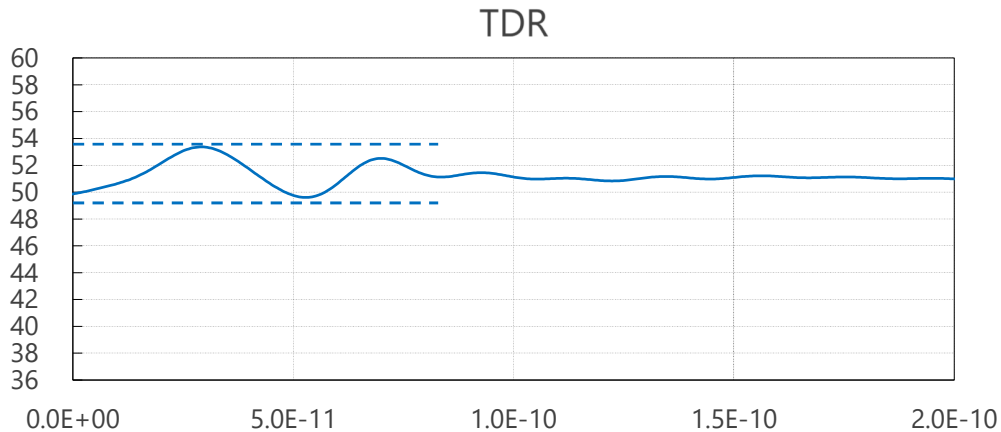
- ✓ 45 GHzまで優れた伝送特性を発揮
- ✓ 特性インピーダンスのばらつきを大幅に抑制したコネクタデザイン
- ✓ 対応ケーブル : 1.13 mm (30)

Maximum height (mm)	1.4	
Outside dimension of receptacle(mm)	2.1 x 2.0	
Applicable wire gauge	O.D. 1.13 mm / AWG 30	
Frequency	DC~45 GHz (Nominal)	
VSWR (L=100 mm) (Nominal)	DC~5 GHz	1.20 max.
	5 GHz~10 GHz	1.35 max.
	10 GHz~15 GHz	1.50 max.
	15 GHz~20 GHz	1.68 max.
	20 GHz~45GHz	1.68 max.
Service temp. (Celsius)	-40 degree ~ +90 degree	
Characteristic impedance	50 ohm	
Rated voltage	AC60V	
Contact resistance	20m ohm max.	
Withstand voltage	AC200V/min	
Insulation resistance	500M ohm min./DC100V	

45GHzまで優れた伝送性能を発揮



特性インピーダンスのばらつきを大幅に抑制したコネクタデザイン



対応ケーブル : 1.13 mm (30)

Coax O.D. (Center Conductor AWG)	Mating Height 1.4 mm max.
2.00 mm (26)	
1.80 mm (30)	
1.37 mm (30)	
1.32 mm (32)	
1.13 mm (30)	○
1.13 mm (32)	
0.95 mm (33)	
0.81 mm (33)	
0.81 mm (36)	
0.64 mm (36)	
0.48 mm (38)	
FPC	
Receptacle	MHF 7 receptacle

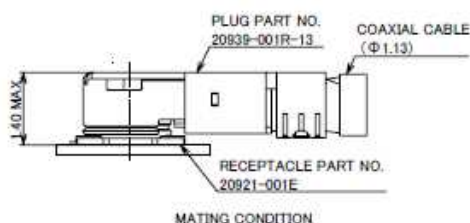
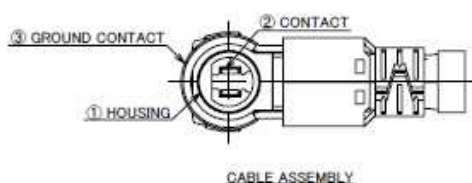
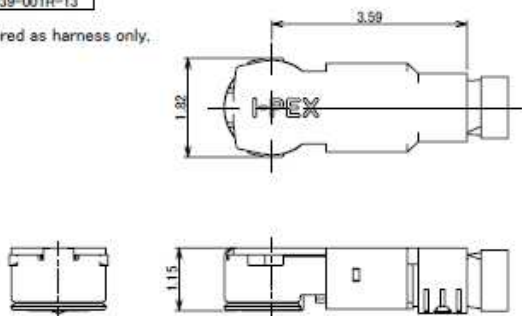
MHF[®] 7

Component Parts Detail

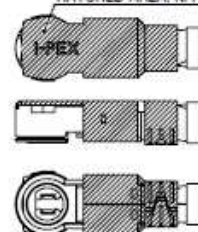
MHF[®] 7 plug

Recommended P/N	20939-001R-13
PART NO.	20939-001R-13

Offered as harness only.

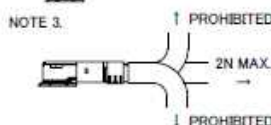
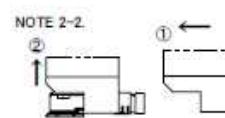
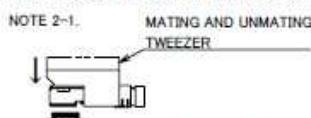


HATCHED AREA: Ni PLATING AREA



NOTES

1. APPLICABLE CONNECTOR: 20921-001E
2. MATING AND UNMATING INSTRUCTION
 - 2-1. MATING
MATE THE CONNECTOR VERTICALLY AS MUCH AS POSSIBLE. ADJUSTING THE MATING AXIS OF PLUG AND RECEPTACLE. DO NOT SLANT MATE.
 - 2-2. UNMATING
USE THE MATING AND UNMATING TOOL (PART NO. 91187-0001) AS THE FOLLOWING DRAWING, AND PULL PLUG TO VERTICAL DIRECTION AS DIRECTLY AS POSSIBLE.
3. PERMISSIBLE LOAD OF CABLE AT MATING.
4. CHARACTERISTIC IMPEDANCE: 50 Ω (NOMINAL VALUE)



NO.	DESCRIPTION	MATERIAL	FINISH, REMARKS
3	GROUND CONTACT	PHOSPHOR BRONZE	ALL OVER: Ni 0.7 μm MIN. CONTACT PART: Au 0.1 μm MIN. [Ni PLATING AREA] Ni ONLY
2	CONTACT	CORSON ALLOY	ALL OVER: Ni 1.00 μm MIN. CONTACT PART: Au 0.1 μm MIN.
1	HOUSING	LCP	UL94V-0, WHITE

Rev.3

MHF[®] 7 plug

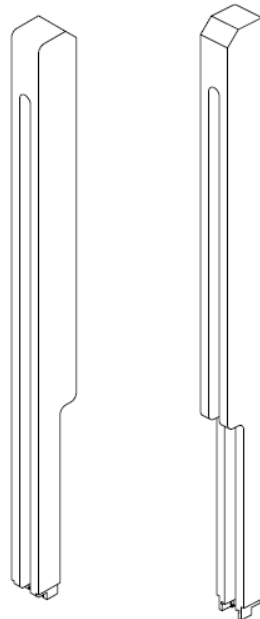
ITEMS	SPECIFICATION
APPLICABLE CONNECTOR PART No.	20921-001E
RATING VOLTAGE	60 V AC (R.M.S)/DC
RATING FREQUENCY	DC~43.5 GHz
OPERATING TEMPERATURE	233~363 K (-40°C~+90°C)
OPERATING HUMIDITY	90% MAX. (NON-CONDENSING)
CHARACTERISTIC IMPEDANCE	50 ohm (NOMINAL VALUE)
VSWR	1.433 MAX. AT 0.1 ~ 1.0 GHz, 1.671 MAX. AT 24.25 ~ 43.50 GHz
MAIN CONTACT RESISTANCE	INITIAL : 20 mohm MAX. / AFTER TEST : \leq R 20 mohm MAX.
GROUND CONTACT RESISTANCE	INITIAL : 20 mohm MAX. / AFTER TEST : \leq R 20 mohm MAX.
INSULATION RESISTANCE	INITIAL : 500 Mohm MIN. / AFTER TEST : 100 Mohm MIN.
DIELECTRIC WITHSTANDING VOLTAGE	AC200V 1min
DURABILITY	20 CYCLES
MATING FORCE (INITIAL / AFTER TEST)	INITIAL: 25N MAX., 5N MIN. (VERTICAL DIRECTION) AFTER TEST: 25N MAX., 5N MIN. (VERTICAL DIRECTION)
UNMATING FORCE (INITIAL / AFTER TEST)	INITIAL: 15N MAX., 5N MIN. (VERTICAL DIRECTION) AFTER TEST: 15N MAX., 5N MIN. (VERTICAL DIRECTION)
CRIMP STRENGTH	5N MIN.
PRODUCT SPECIFICATION	PRS-2574
TEST REPORT	TR-19022
INSTRUCTION MANUAL	HIM-19008
APPEARANCE CRITERIA No.	QLS-A***

Rev.3

Accessories for MHF[®] 7 plug



MHF 7 PLUG INSPECTION ADAPTER
PART NO. 91106-0001

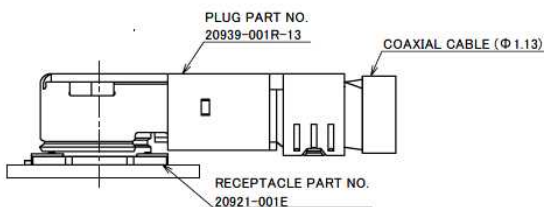
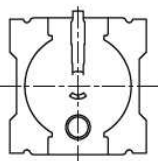
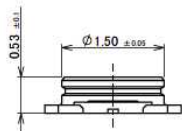
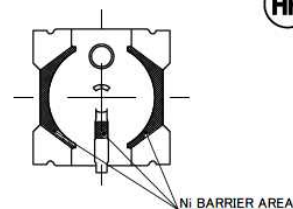
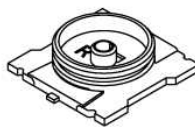
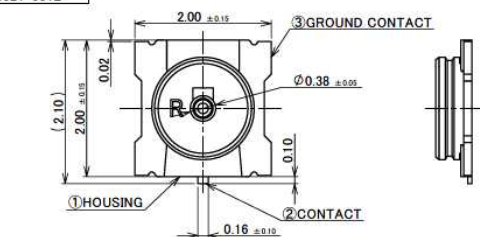


MHF 7 13 TYPE MATING AND UNMATING TWEEZER
PART NO. 91187-0002

Rev.3

MHF[®] 7 Receptacle

Recommended P/N	20921-001E
PART NO.	20921-001E



MATING CONDITION

NOTES

1. APPLICABLE CONNECTOR
20939-001R-13
2. COPLANARITY: 0.08mm MAX.
3. CHARACTERISTIC IMPEDANCE: 50Ω (NOMINAL VALUE)

NO.	DESCRIPTION	MATERIAL	FINISH, REMARKS
3	GROUND CONTACT	PHOSPHOR BRONZE	ALL OVER: Ni 1.00 μm MIN. CONTACT PART: Au 0.05 μm MIN. SOLDERING PART: Au AREA: 0.02 μm MIN.
2	CONTACT	CORSON ALLOY	ALL OVER: Ni 1.00 μm MIN. CONTACT PART: Au 0.1 μm MIN. SOLDERING PART: Au AREA: 0.02 μm MIN.
1	HOUSING	LCP	UL94V-0, WHITE

Confidential C

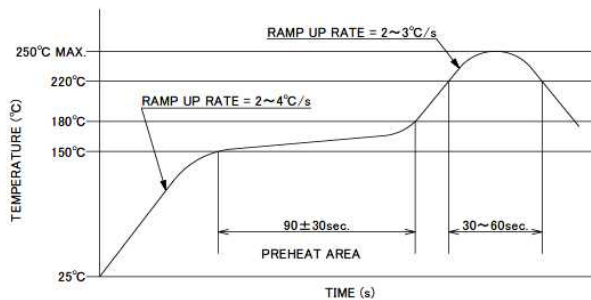
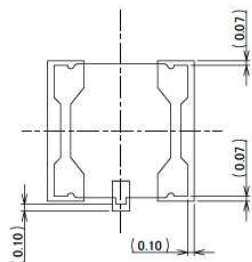
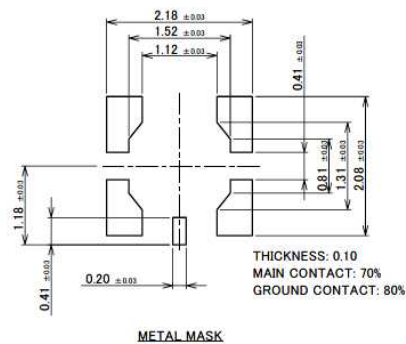
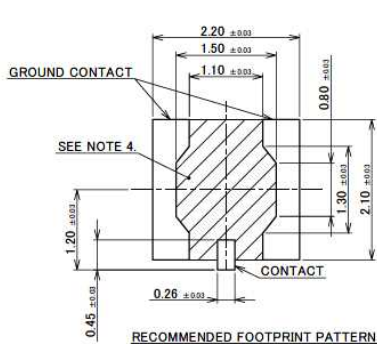
Rev.5

MHF[®] 7 Receptacle

ITEMS	SPECIFICATION
APPLICABLE CONNECTOR PART No.	20939-001R-13
RATING VOLTAGE	60 V AC (R.M.S)/DC
RATING FREQUENCY	DC ~ 43.5 GHz
OPERATING TEMPERATURE	233 ~ 363 K (-40°C ~ +90°C)
OPERATING HUMIDITY	90% MAX. (NON-CONDENSING)
CHARACTERISTIC IMPEDANCE	50 ohm (NOMINAL VALUE)
VSWR	1.433 MAX. AT 0.1 ~ 1.0 GHz, 1.671 MAX. AT 24.25 ~ 43.50 GHz
MAIN CONTACT RESISTANCE	INITIAL : 20 mohm MAX. / AFTER TEST : $\leq R$ 20 mohm MAX.
GROUND CONTACT RESISTANCE	INITIAL : 20 mohm MAX. / AFTER TEST : $\leq R$ 20 mohm MAX.
INSULATION RESISTANCE	INITIAL : 500 Mohm MIN. / AFTER TEST : 100 Mohm MIN.
DIELECTRIC WITHSTANDING VOLTAGE	AC200V 1min
DURABILITY	20 CYCLES
MATING FORCE (INITIAL / AFTER TEST)	INITIAL: 25N MAX., 5N MIN. (VERTICAL DIRECTION) AFTER TEST: 25N MAX., 5N MIN. (VERTICAL DIRECTION)
UNMATING FORCE (INITIAL / AFTER TEST)	INITIAL: 15N MAX., 5N MIN. (VERTICAL DIRECTION) AFTER TEST: 15N MAX., 5N MIN. (VERTICAL DIRECTION)
CRIMP STRENGTH	5N MIN.
PRODUCT SPECIFICATION	PRS-2574
TEST REPORT	TR-19022
PACKING STANDARD	PST-18124
INSTRUCTION MANUAL	HIM-19008
APPEARANCE CRITERIA No.	QLS-A***

Rev.5

MHF[®] 7 Receptacle



NOTES
4. NO GROUND, SIGNAL, AND RESIST IN THIS AREA.

Confidential C

Rev.5

Accessories for MHF[®] 7 Receptacle



MHF 7 RECEPTACLE INSPECTION ADAPTER
PART NO. 91107-0001



MHF 7 RECEPTACLE HIGH CYCLE N30 SMPM ADAPTER
PART NO. 91145-0001



MHF SERIES N30 SMPM TO 240MM ADAPTER CABLE
PART NO. 91137-J300

* 91145-0001 AND 91137-J300 SHOULD BE USED TOGETHER.

Rev.5



Copyright © I-PEX Inc. 2020. All rights reserved.

I-PEX, MHF, CABLINE, NOVASTACK, EVAFLEX, MINIFLEX, ISH, IARPB, IASLP, ESTORQ, i-Fit, ISFIT はI-PEX株式会社の登録商標です。本書の記載内容については、予告なく変更することがありますのでご了承ください。内容に含まれる情報の正確性や更新義務について当社は一切の責任を負いません。ご使用前に「使用上の注意」および「取扱説明書」の最新版を必ずご覧いただき、ご理解のうえご使用ください。使用上の注意事項に反して本製品をご使用したことによって生じた不具合、故障及び事故に関し、当社は一切その責任を負いません。極めて高い信頼性・安全性が要求される用途や人命に関わる用途(原子力・航空宇宙・運輸・医療・安全装置等)への使用に関しましては、事前に当社営業窓口までご相談ください。

詳しい情報については、営業窓口までお問い合わせください。[i-pex.com]