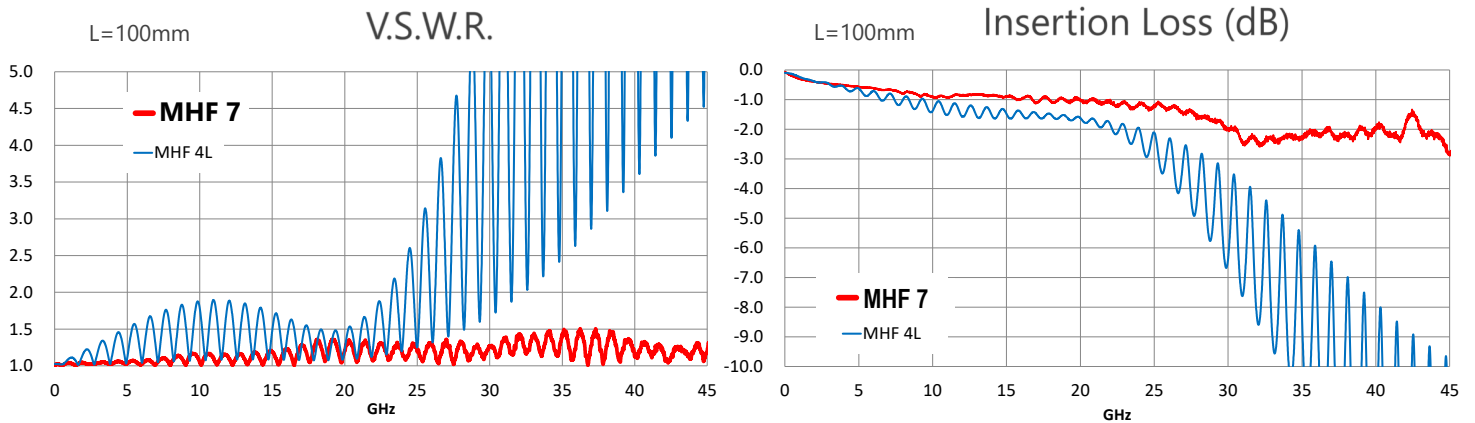




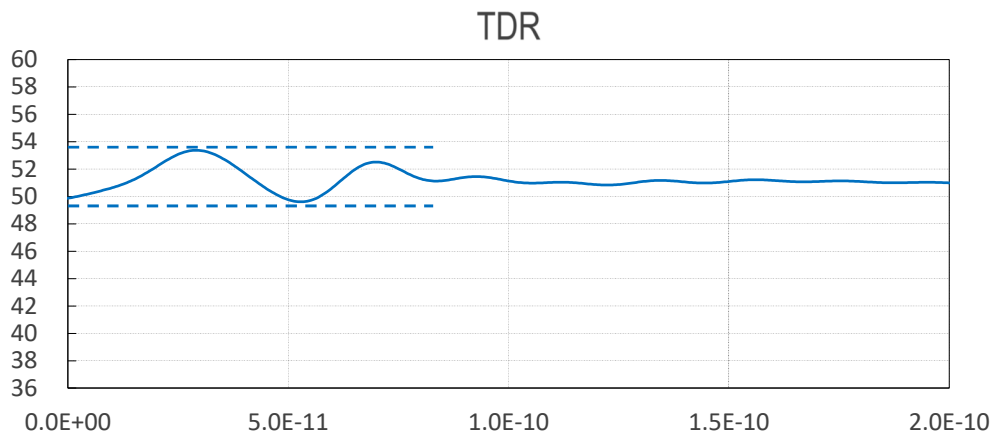
- ✓ Excellent electrical performance through 45 GHz
- ✓ Controlled variation in characteristic impedance
- ✓ MHF[®] 7 Plug available micro-coax O.D. (AWG) : 1.13 mm (30)

Product name		MHF7
Maximum height (mm)		1.4
Outside dimension of receptacle(mm)		2.1 x 2.0
Applicable wire gauge		O.D. 1.13 mm / AWG 30
Frequency		DC~45 GHz (Nominal)
VSWR (L=100 mm) (Nominal)	DC~5 GHz	1.20 max.
	5 GHz~10 GHz	1.35 max.
	10 GHz~15 GHz	1.50 max.
	15 GHz~20 GHz	1.68 max.
20 GHz~45GHz		1.68 max.
Service temp. (Celsius)		-40 degree ~ +90 degree
Characteristic impedance		50 ohm
Rated voltage		AC60V
Contact resistance		20m ohm max.
Withstand voltage		AC200V/min
Insulation resistance		500M ohm min./DC100V

Excellent electrical performance through 45 GHz



Controlled variation in characteristic impedance



MHF[®] 7 Plug available micro-coax O.D. (AWG) : 1.13 mm (30)

Coax O.D. (Center Conductor AWG)	Mating Height 1.4 mm max.
2.00 mm (26)	
1.80 mm (30)	
1.37 mm (30)	
1.32 mm (32)	
1.13 mm (30)	○
1.13 mm (32)	
0.95 mm (33)	
0.81 mm (33)	
0.81 mm (36)	
0.64 mm (36)	
0.48 mm (38)	
FPC	
Receptacle	MHF 7 receptacle

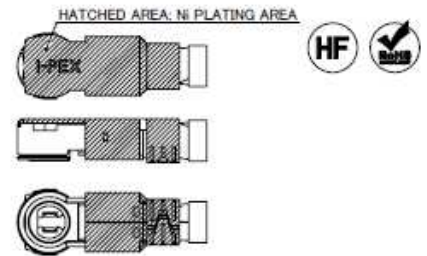
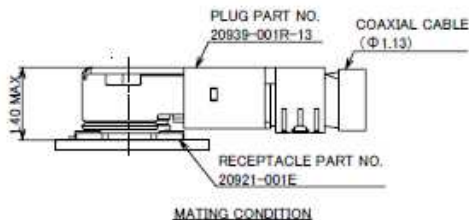
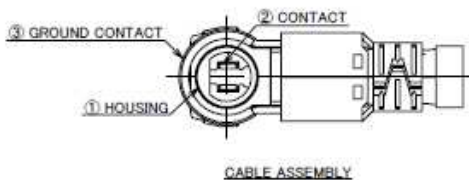
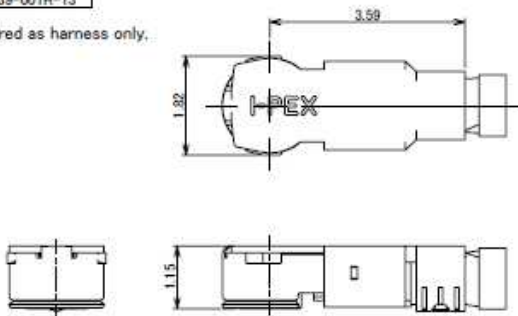
MHF[®] 7

Component Parts Detail

MHF[®] 7 plug

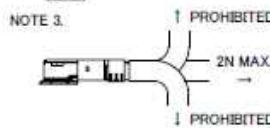
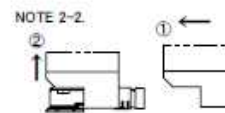
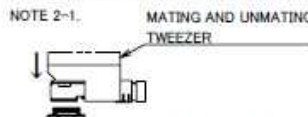
Recommended P/N	20939-001R-13
PART NO.	20939-001R-13

Offered as harness only.



NOTES

1. APPLICABLE CONNECTOR: 20921-001E
2. MATING AND UNMATING INSTRUCTION
 - 2-1. MATING
MATE THE CONNECTOR VERTICALLY AS MUCH AS POSSIBLE. ADJUSTING THE MATING AXIS OF PLUG AND RECEPTACLE. DO NOT SLANT MATE.
 - 2-2. UNMATING
USE THE MATING AND UNMATING TOOL (PART NO. 91187-0001) AS THE FOLLOWING DRAWING, AND PULL PLUG TO VERTICAL DIRECTION AS DIRECTLY AS POSSIBLE.
3. PERMISSIBLE LOAD OF CABLE AT MATING.
4. CHARACTERISTIC IMPEDANCE: 50 Ω (NOMINAL VALUE)



3	GROUND CONTACT	PHOSPHOR BRONZE	ALL OVER: Ni 0.7 μm MIN. CONTACT PART: Au 0.1 μm MIN. [Ni PLATING AREA] Ni ONLY
2	CONTACT	CORSON ALLOY	ALL OVER: Ni 1.00 μm MIN. CONTACT PART: Au 0.1 μm MIN.
1	HOUSING	LCP	UL94V-0, WHITE
NO.	DESCRIPTION	MATERIAL	FINISH, REMARKS

Rev.3

MHF[®] 7 plug

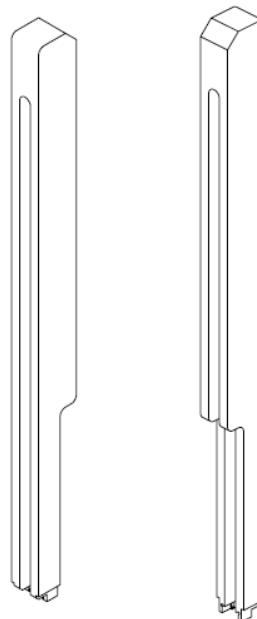
ITEMS	SPECIFICATION
APPLICABLE CONNECTOR PART No.	20921-001E
RATING VOLTAGE	60 V AC (R.M.S)/DC
RATING FREQUENCY	DC~43.5 GHz
OPERATING TEMPERATURE	233~363 K (-40°C~+90°C)
OPERATING HUMIDITY	90% MAX. (NON-CONDENSING)
CHARACTERISTIC IMPEDANCE	50 ohm (NOMINAL VALUE)
VSWR	1.433 MAX. AT 0.1 ~ 1.0 GHz, 1.671 MAX. AT 24.25 ~ 43.50 GHz
MAIN CONTACT RESISTANCE	INITIAL : 20 mohm MAX. / AFTER TEST : \leq R 20 mohm MAX.
GROUND CONTACT RESISTANCE	INITIAL : 20 mohm MAX. / AFTER TEST : \leq R 20 mohm MAX.
INSULATION RESISTANCE	INITIAL : 500 Mohm MIN. / AFTER TEST : 100 Mohm MIN.
DIELECTRIC WITHSTANDING VOLTAGE	AC200V 1min
DURABILITY	20 CYCLES
MATING FORCE (INITIAL / AFTER TEST)	INITIAL: 25N MAX., 5N MIN. (VERTICAL DIRECTION) AFTER TEST: 25N MAX., 5N MIN. (VERTICAL DIRECTION)
UNMATING FORCE (INITIAL / AFTER TEST)	INITIAL: 15N MAX., 5N MIN. (VERTICAL DIRECTION) AFTER TEST: 15N MAX., 5N MIN. (VERTICAL DIRECTION)
CRIMP STRENGTH	5N MIN.
PRODUCT SPECIFICATION	PRS-2574
TEST REPORT	TR-19022
INSTRUCTION MANUAL	HIM-19008
APPEARANCE CRITERIA No.	QLS-A***

Rev.3

Accessories for MHF[®] 7 plug



MHF 7 PLUG INSPECTION ADAPTER
PART NO. 91106-0001

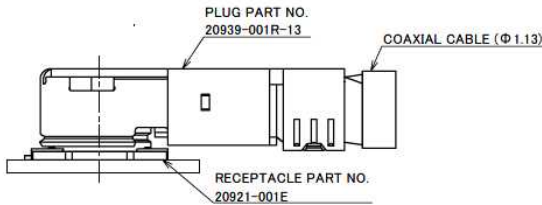
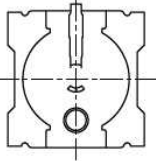
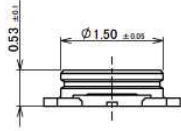
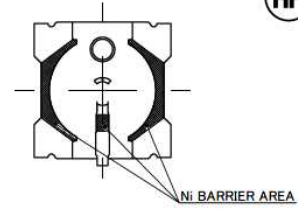
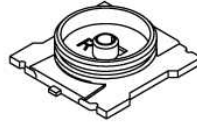
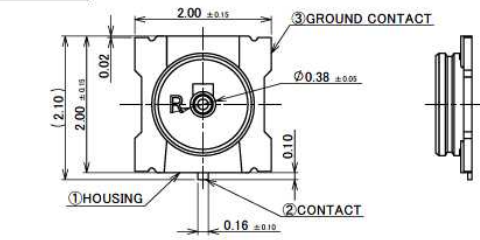


MHF 7 13 TYPE MATING AND UNMATING TWEEZER
PART NO. 91187-0002

Rev.3

MHF[®] 7 Receptacle

Recommended P/N	20921-001E
PART NO.	20921-001E



MATING CONDITION

- NOTES
1. APPLICABLE CONNECTOR
20939-001R-13
 2. COPLANARITY: 0.08mm MAX.
 3. CHARACTERISTIC IMPEDANCE: 50Ω (NOMINAL VALUE)

NO.	DESCRIPTION	MATERIAL	FINISH, REMARKS
3	GROUND CONTACT	PHOSPHOR BRONZE	ALL OVER: Ni 1.00 μm MIN. CONTACT PART: Au 0.05 μm MIN. SOLDERING PART: Au AREA: 0.02 μm MIN.
2	CONTACT	CORSON ALLOY	ALL OVER: Ni 1.00 μm MIN. CONTACT PART: Au 0.1 μm MIN. SOLDERING PART: Au AREA: 0.02 μm MIN.
1	HOUSING	LCP	UL94V-0, WHITE

Confidential C

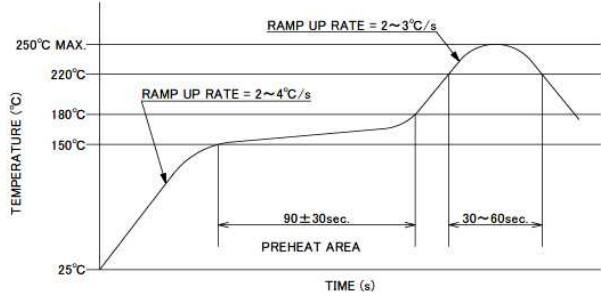
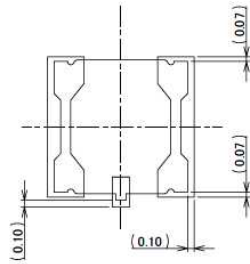
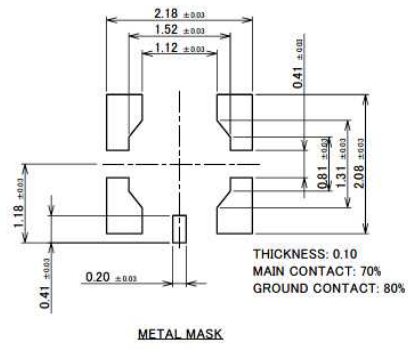
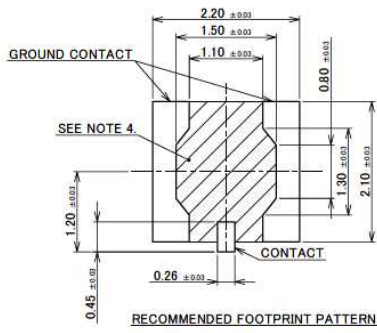
Rev.5

MHF[®] 7 Receptacle

ITEMS	SPECIFICATION
APPLICABLE CONNECTOR PART No.	20939-001R-13
RATING VOLTAGE	60 V AC (R.M.S)/DC
RATING FREQUENCY	DC ~ 43.5 GHz
OPERATING TEMPERATURE	233 ~ 363 K (-40°C ~ +90°C)
OPERATING HUMIDITY	90% MAX. (NON-CONDENSING)
CHARACTERISTIC IMPEDANCE	50 ohm (NOMINAL VALUE)
VSWR	1.433 MAX. AT 0.1 ~ 1.0 GHz, 1.671 MAX. AT 24.25 ~ 43.50 GHz
MAIN CONTACT RESISTANCE	INITIAL : 20 mohm MAX. / AFTER TEST : \surdR 20 mohm MAX.
GROUND CONTACT RESISTANCE	INITIAL : 20 mohm MAX. / AFTER TEST : \surdR 20 mohm MAX.
INSULATION RESISTANCE	INITIAL : 500 Mohm MIN. / AFTER TEST : 100 Mohm MIN.
DIELECTRIC WITHSTANDING VOLTAGE	AC200V 1min
DURABILITY	20 CYCLES
MATING FORCE (INITIAL / AFTER TEST)	INITIAL: 25N MAX., 5N MIN. (VERTICAL DIRECTION) AFTER TEST: 25N MAX., 5N MIN. (VERTICAL DIRECTION)
UNMATING FORCE (INITIAL / AFTER TEST)	INITIAL: 15N MAX., 5N MIN. (VERTICAL DIRECTION) AFTER TEST: 15N MAX., 5N MIN. (VERTICAL DIRECTION)
CRIMP STRENGTH	5N MIN.
PRODUCT SPECIFICATION	PRS-2574
TEST REPORT	TR-19022
PACKING STANDARD	PST-18124
INSTRUCTION MANUAL	HIM-19008
APPEARANCE CRITERIA No.	QLS-A***

Rev.5

MHF[®] 7 Receptacle



NOTES:
4. NO GROUND, SIGNAL, AND RESIST IN THIS AREA.

Confidential C

Rev.5

Accessories for MHF[®] 7 Receptacle



MHF 7 RECEPTACLE INSPECTION ADAPTER
PART NO. 91107-0001



MHF 7 RECEPTACLE HIGH CYCLE N30 SMPM ADAPTER
PART NO. 91145-0001



MHF SERIES N30 SMPM TO 240MM ADAPTER CABLE
PART NO. 91137-J300

* 91145-0001 AND 91137-J300 SHOULD BE USED TOGETHER.

Rev.5



Copyright © I-PEX Inc. 2020. All rights reserved.

I-PEX, MHF, CABLINE, NOVASTACK, EVAFLEX, MINIFLEX, ISH, IARPB, IASLP, ESTORQ, i-Fit and ISFIT are registered trademarks of I-PEX Inc. Please note that the contents in the catalog might be changed without prior notification. I-PEX Inc. assumes no responsibility for any inaccuracies or obligation to update Information on these documents. Please be sure to read and understand the latest "Precautions for Use" and "Instruction Manual" before you use our products. We shall not be responsible for any defects, damages or troubles in case you use our products without following the precautions for use. Please feel free to contact our sales representatives when you use our products for any applications that require very high reliability and safety, or that relate to human life (ex. nuclear power control, aerospace, transportation, medical equipment, safety equipment etc.).

Contact your sales representative for more detailed information. [i-pex.com]