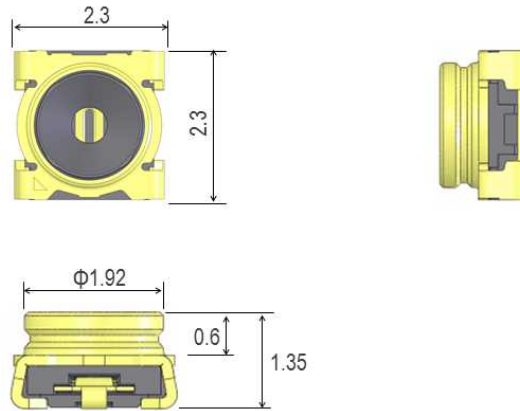




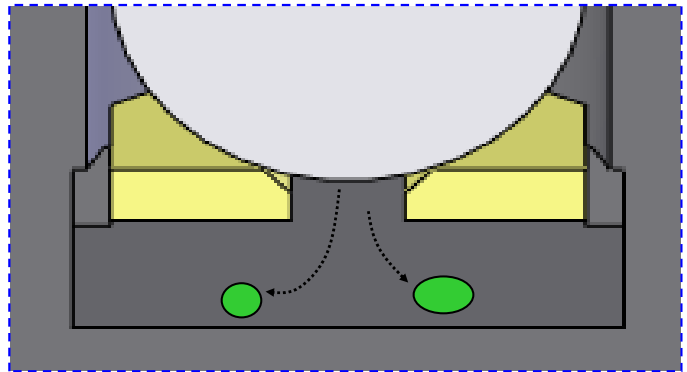
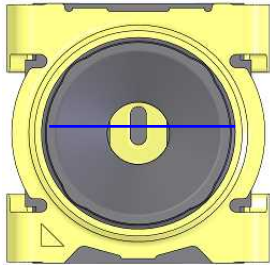
- ✓封装 2.3 x 2.3 mm , 应用于 RF天线射频模组的测试
- ✓合理的内部构造, 防止受到污染
- ✓有多种测试头可供选择

Feature		Contaminant discontinuity resistant design 2.3 x 2.3 mm footprint
Dimension (mm)		2.3 x 2.3 x 1.35 (H)
Rated power		2W max.
Frequency		DC~11.0 GHz
V.S.W.R.	DC~3.0 GHz	1.2 max. (DC ~ 2.5 GHz)
	3.0 GHz~6.0 GHz	1.3 max. (2.5 ~ 6.0 GHz)
	6.0 GHz~11.0 GHz	1.5 max.
Insertion loss	DC~3.0 GHz	0.15 dB max. (DC ~ 2.5 GHz)
	3.0 GHz~6.0 GHz	0.20 dB max. (2.5 ~ 6.0 GHz)
	6.0 GHz~11.0 GHz	0.40 dB max.

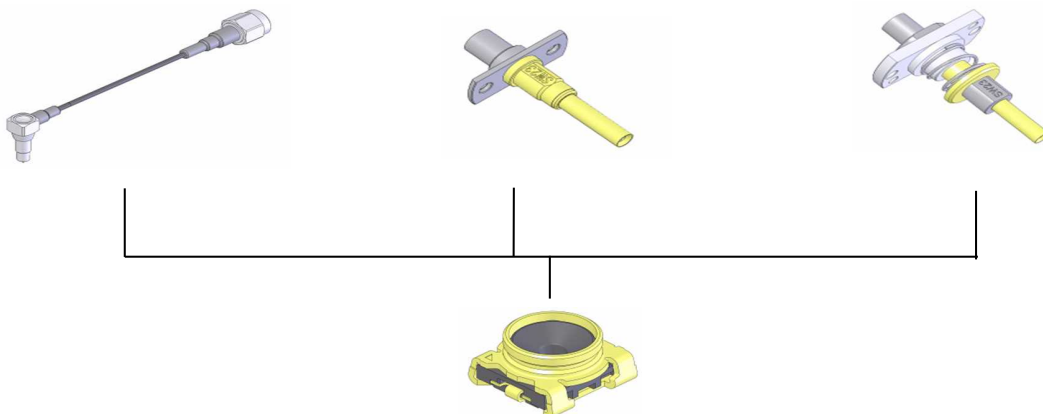
封装 2.3 x 2.3 mm, 应用于 RF 天线射频模组的测试



合理的内部构造, 防止受到污染



有多种测试头可供选择

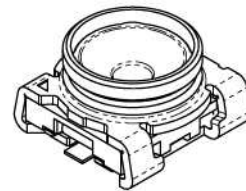
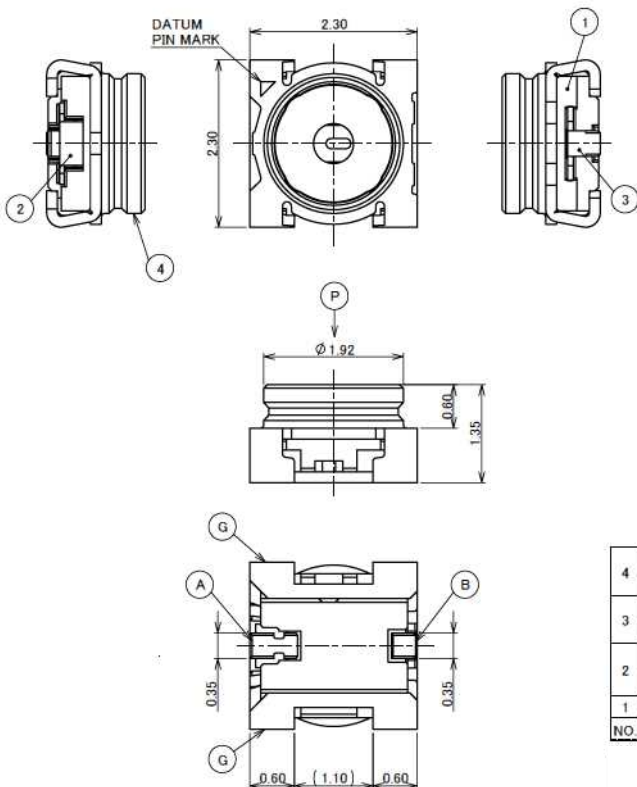


MHF[®]-SW23

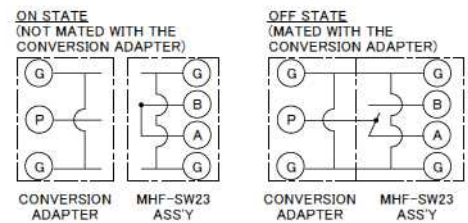
Component Parts Detail

MHF[®]-SW23

Recommended P/N	20549-001E
PART NO.	PACKING QUANTITY
20549-001E	10,000/REEL
20549-001E-01	2,500/REEL



- NOTES.
1. COPLANARITY : 0.1MAX.
 2. RoHS COMPLIANT.
 3. CIRCUIT OF SWITCH



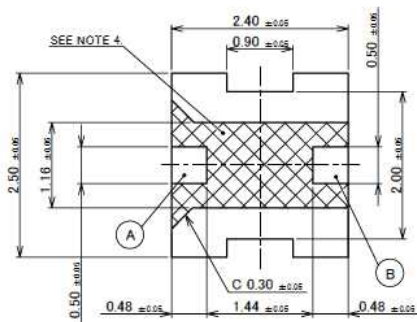
4	GROUND CONTACT	PHOSPHOR BRONZE	ALL OVER Ni 1.00 μ m MIN. CONTACT PART Au 0.02 μ m MIN. SOLDERING PART Au 0.02 μ m MIN.
3	CONTACT B	PHOSPHOR BRONZE	ALL OVER Ni 1.00 μ m MIN. CONTACT PART Au 0.2 μ m MIN. SOLDERING PART Au 0.02 μ m MIN.
2	CONTACT A	CORSON ALLOY	ALL OVER Ni 1.00 μ m MIN. CONTACT PART Au 0.2 μ m MIN. SOLDERING PART Au 0.02 μ m MIN.
1	HOUSING	LCP	UL94V-0, BLACK
NO.	DESCRIPTION	MATERIAL	FINISH, REMARKS

Rev.8

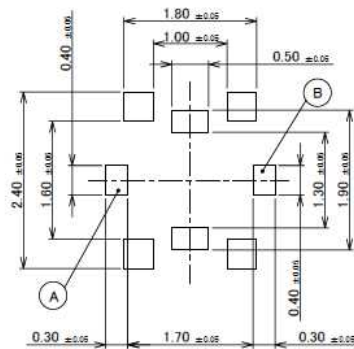
ITEMS	SPECIFICATION	
	20549-001E	20549-001E-01
CONNECTOR PART NO.	20549-001E	20549-001E-01
RATING POWER	2 W	
RATING FREQUENCY	DC ~ 11.0 GHz	
OPERATING TEMPERATURE	233 ~ 358 K (-40°C ~ +85°C)	
OPERATING HUMIDITY	90% MAX. (NON-CONDENSING)	
VSWR	1.2 MAX. AT DC ~ 2.5 GHz, 1.3 MAX. AT 2.5 GHz ~ 6.0 GHz, 1.5 MAX. AT 6.0 GHz ~ 11.0 GHz	
MAIN CONTACT RESISTANCE	100 mohm MAX	
GROUND CONTACT RESISTANCE	100 mohm MAX	
INSULATION RESISTANCE	INITIAL: 1000 Mohm MIN. / AFTER TEST: 10 Mohm MIN.	
DIELECTRIC WITHSTANDING VOLTAGE	100 V AC, 1 MINUTE	
DURABILITY	100 CYCLES	
PRODUCT SPECIFICATION	PRS-1672	
TEST REPORT	TR-12041	
PACKING STANDARD	300-991	PST-12025
INSTRUCTION MANUAL	HIM-13004	
APPEARANCE CRITERIA No.	QLS-A***	

Rev.8

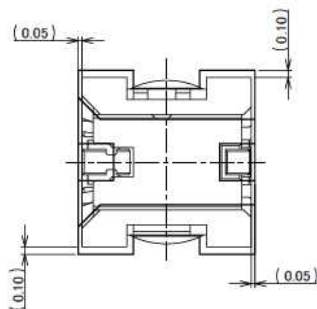
MHF® -SW23



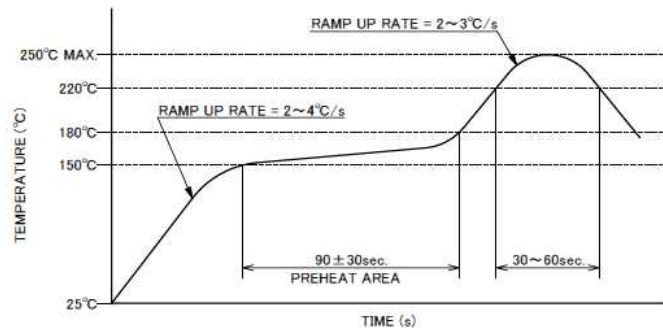
RECOMMENDED FOOTPRINT PATTERN



MASK THICKNESS: $t = 0.1$
METAL MASK



CONNECTOR ON RECOMMENDED FOOTPRINT PATTERN

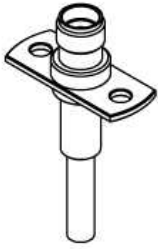


REFLOW TEMPERATURE PROFILE
SENJU METAL INDUSTRY CO., LTD. : M705-SHF(Sn96.5 Ag3.0 Cu0.5)

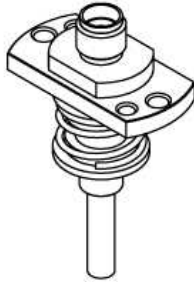
NOTES
4. PATTERN AND RESIST PROHIBITION AREA

Rev.8

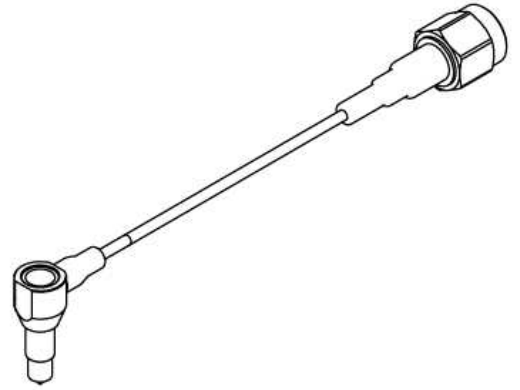
Accessories for MHF® -SW23



MHF-SW23 / HIGH CYC ADAP
PART NO. 90604-0001



MHF-SW23 / HIGH CYC ADAP FLOATING
PART NO. 90605-0001



MHF-SW23 / SMA-P CONV ADAP LOCK
PART NO. 90582-0400

Rev.8

I-PEX

Copyright © I-PEX Inc. 2020. All rights reserved.

I-PEX, MHF, CABLINE, NOVASTACK, EVAFLEX, MINIFLEX, ISH, IARPB, IASLP, ESTORQ, i-Fit 以及 ISFIT 是 I-PEX 株式会社的注册商标。请注意，目录中的内容可能会在没有事先通知的情况下进行更改。I-PEX 集团没有义务和责任承担这些文件中误差和更新。使用我们的产品前，请务必正确阅读和理解最新的“使用注意事项”和“使用说明书”。如果您在使用我们的产品时没有遵循使用注意事项，我们将不对任何不良、损坏或故障负责。当您我们的产品使用在任何需要较高可靠性和安全性，或者涉及生命安全的应用时，请提前联系我们的销售代表。（例如：核电控制，航空航天，运输，医疗设备，安全设备等）

请联系您当地的销售代表，了解更详细的信息 [i-pex.com]

202008R0