

DW-5

개별 전선이나 FPC로 옵션 사용이 가능한 하이브리드 커넥터, 높이 = 1.0 mm, 0.5 mm Pitch, 수평 결합, 백플립

| | | Plug | Receptacle |
|--------------------|-----------|--|--------------------------------|
| Board Pitch (mm) | | 0.5 | |
| Wiping Length (mm) | | 1 | |
| Size (mm) | Height | 1.0 +/- 0.1 | |
| | Width | Formula: $3.8+(0.5*\text{?p})$ | Formula: $3.7+(0.5*\text{?p})$ |
| | Depth | Open: Mating FPC : 3.0 Mating PLUG CABLE : 4.9 Close: Mating FPC : 3.5 Mating PLUG CABLE : 5.39 | |
| Pin counts | Range | 6-20 (even) | |
| | Available | 6, 8, 10 | |

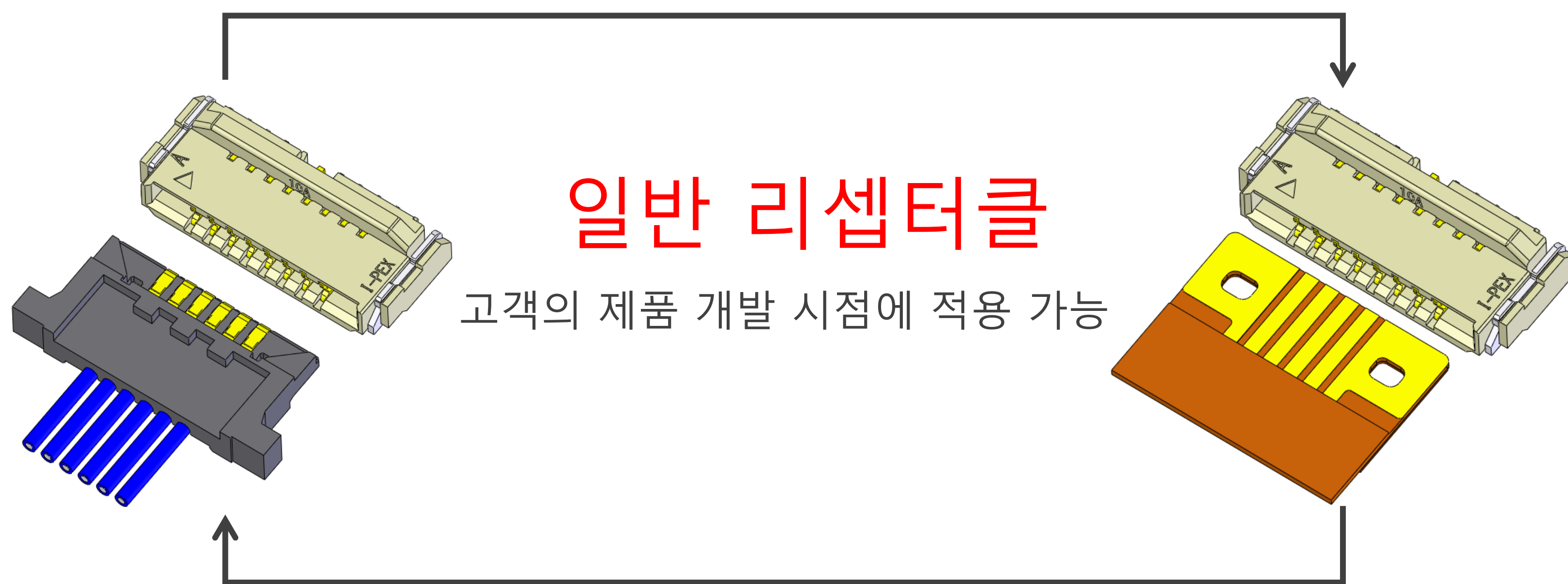
Applicable FPC/FFC:

| | |
|------------------------|----------------|
| FPC/FFC Contact Pitch | 0.5 |
| FPC/FFC Contact Point | Top and Bottom |
| FPC/FFC Thickness (mm) | 0.2 +/- 0.03 |

*기재가 되어있지 않은 핀 수의 대응 여부에 대해서는 문의해 부탁드립니다.

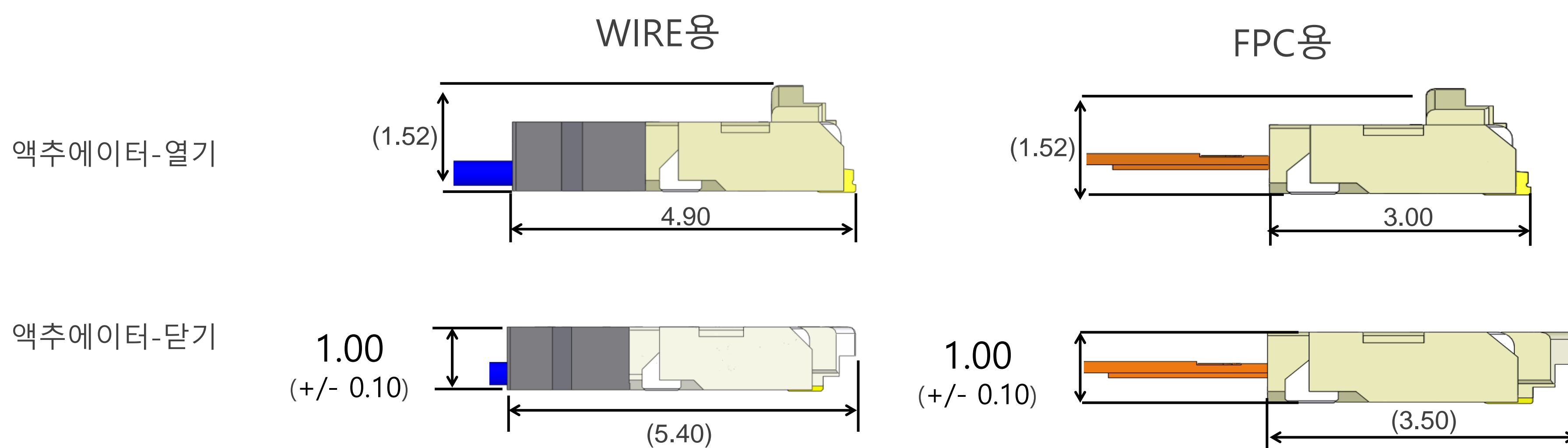


▶ FPC나 개별 전선으로 결합이 가능한 하이브리드 커넥터

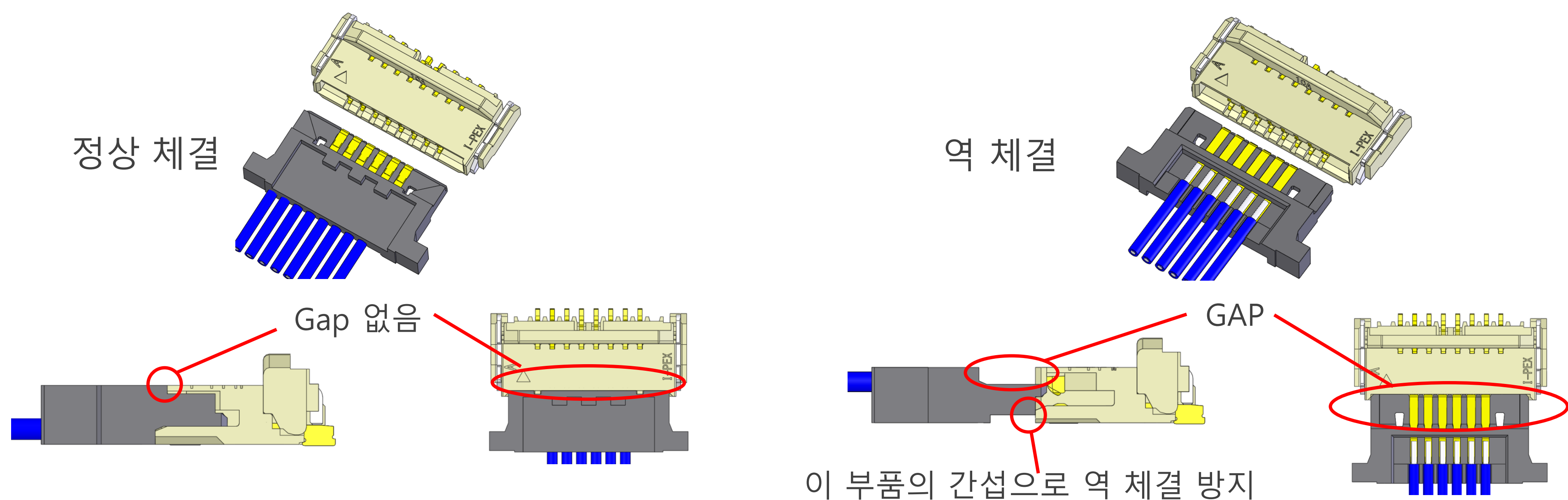


▶ 동급 최소인 1.0 mm 높이

1.0 mm 의 낮은 높이, 세계 최소 사이즈 구현(6 Pin)



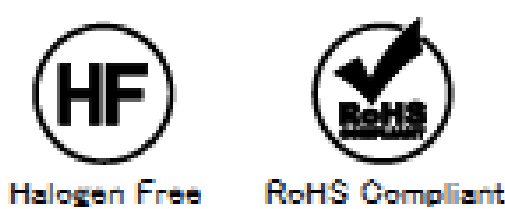
▶ 오삽입 방지 형상에 의한 작동 오류 감소



Component Parts Details

Plug for Cable Assembly

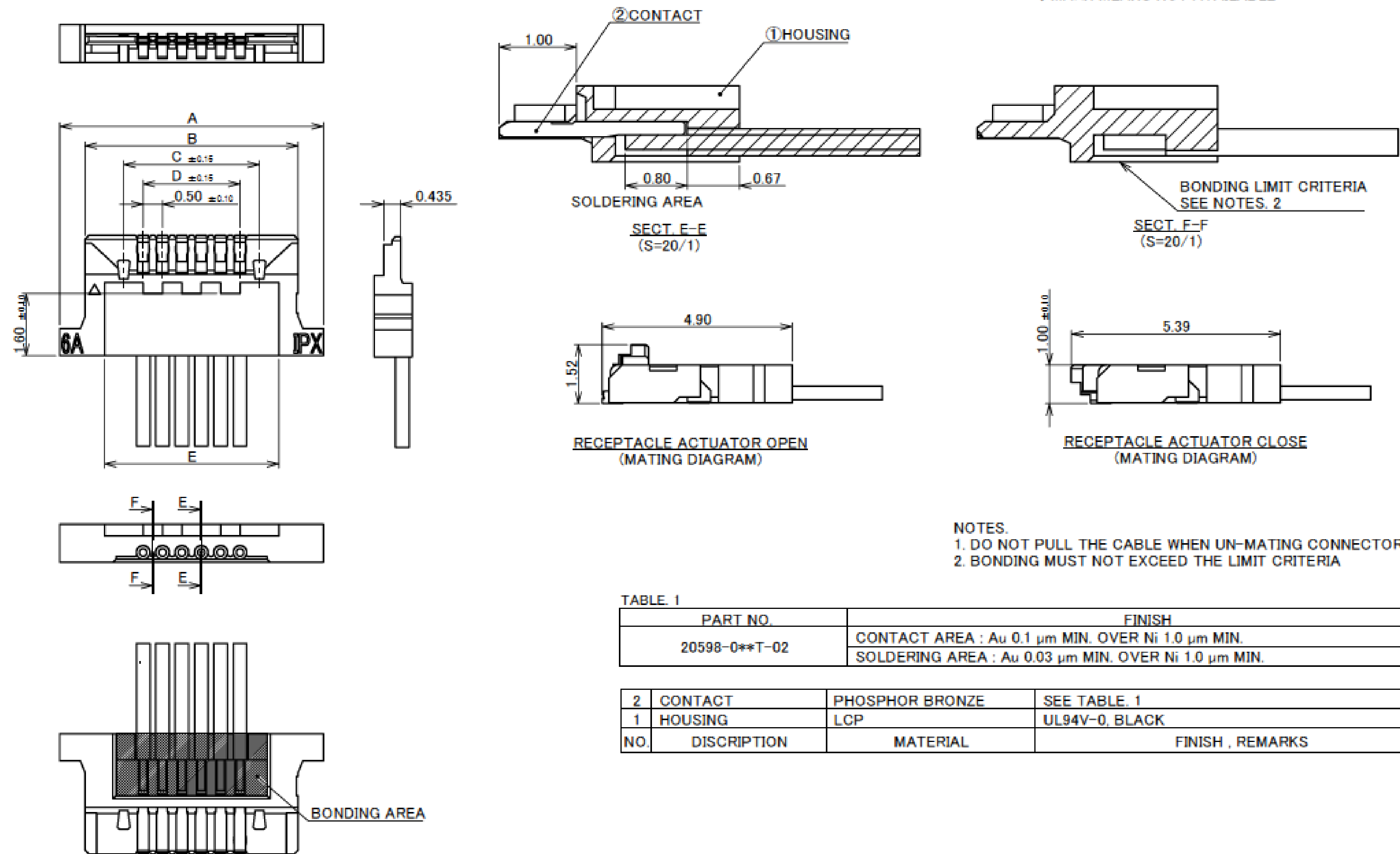
| | |
|-----------------|---------------|
| Recommended P/N | 20598-0**T-02 |
|-----------------|---------------|



CAUTION VISIT OUR WEBSITE FOR LATEST VERSIONS OF INSTRUCTION MANUAL NO. HIM-14010 TO HANDLE THE PRODUCT PROPERLY AND SAFELY.

| PART No. | POS. | A | B | C | D | E |
|----------------|------|-------|-------|-------|------|-------|
| 20598-006T-02 | 6 | 6.80 | 5.50 | 3.50 | 2.50 | 4.50 |
| 20598-008T-02 | 8 | 7.80 | 6.50 | 4.50 | 3.50 | 5.50 |
| 20598-010T-02 | 10 | 8.80 | 7.50 | 5.50 | 4.50 | 6.50 |
| ◆20598-020T-02 | 20 | 13.80 | 12.50 | 10.50 | 9.50 | 11.50 |

◆MARK MEANS NOT AVAILABLE

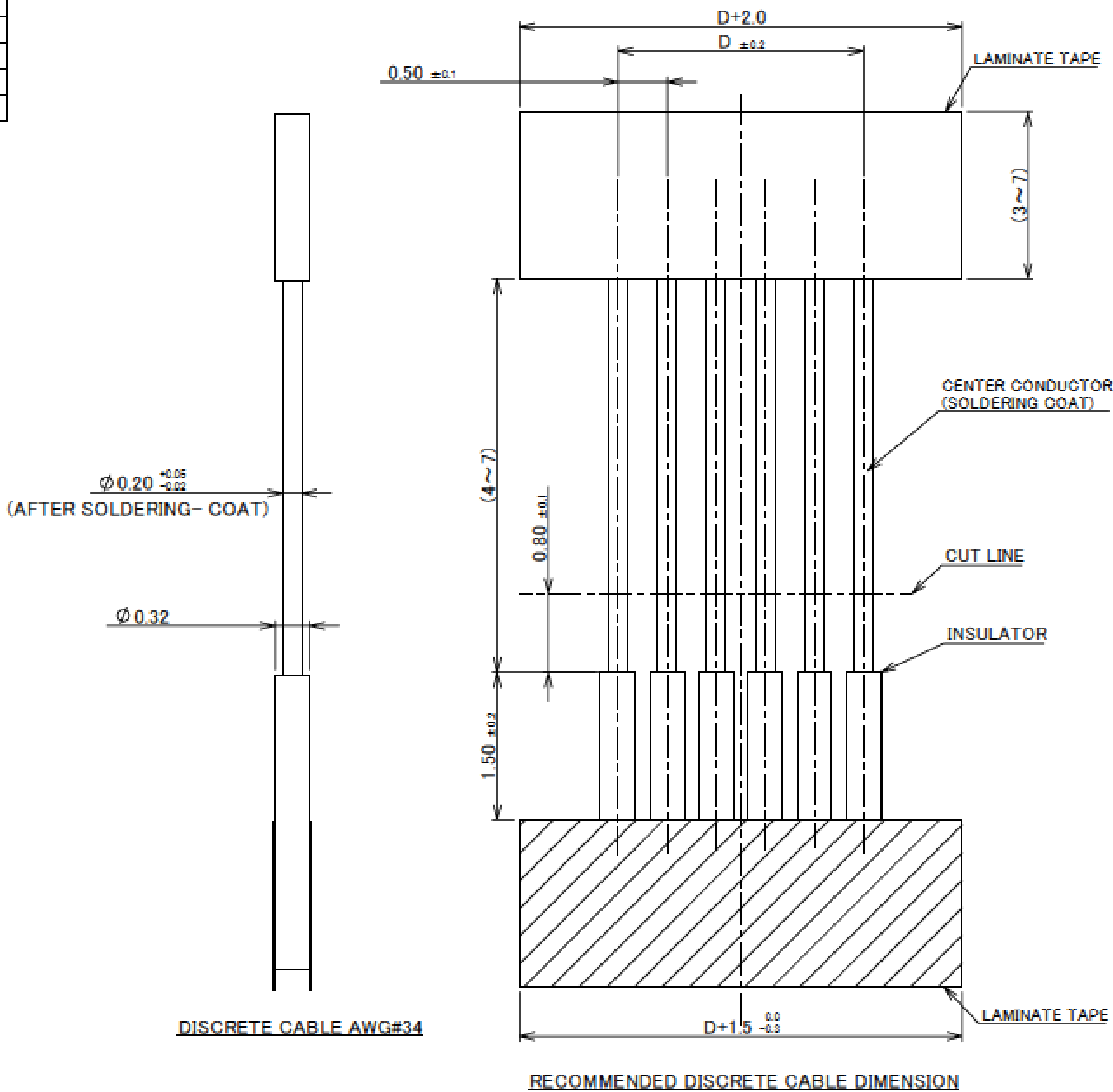


| TABLE. 1 | | FINISH | |
|---------------|-------------|--|------------------|
| PART NO. | | CONTACT AREA : Au 0.1 μm MIN. OVER Ni 1.0 μm MIN. | |
| 20598-0**T-02 | | SOLDERING AREA : Au 0.03 μm MIN. OVER Ni 1.0 μm MIN. | |
| 2 | CONTACT | PHOSPHOR BRONZE | SEE TABLE. 1 |
| 1 | HOUSING | LCP | UL94V-0, BLACK |
| NO. | DISCRIPTION | MATERIAL | FINISH , REMARKS |

Plug for Cable Assembly

| PART No. | POS. | D |
|----------------|------|------|
| 20598-006T-02 | 6 | 2.50 |
| 20598-008T-02 | 8 | 3.50 |
| 20598-010T-02 | 10 | 4.50 |
| ◆20598-020T-02 | 20 | 9.50 |

◆MARK MEANS NOT AVAILABLE



Rev.4

| ITEMS | SPECIFICATION |
|--|--|
| APPLICABLE CABLE | DISCRETE : AWG#34 |
| RATING VOLTAGE | 50V AC (PER CONTACT) |
| RATING AMPERAGE | 0.7A DC [AWG#34] (PER CONTACT) |
| OPERATING TEMPERATURE | 233~358K(-40℃~85℃) |
| OPERATING HUMIDITY | 80% MAX. |
| CONTACT RESISTANCE | INITIAL : 40mohm MAX. / AFTER TEST : \triangle 20mohm MAX. |
| INSULATION RESISTANCE | INITIAL : 1000Mohm MIN. / AFTER TEST : 500Mohm MIN. |
| DIELECTRIC WITHSTANDING VOLTAGE | AC200V 1min |
| DURABILITY | 20TH CYCLES |
| ACTUATOR LOCKING FORCE (INITIAL / 20TH CYCLES) | INITIAL/ 20TH CYCLES : $0.6N(61gf) \times (n + 2)$ MAX. |
| ACTUATOR UNLOCKING FORCE (INITIAL / 20TH CYCLES) | INITIAL/ 20TH CYCLES : $0.05N(5gf) \times (n + 2)$ MIN. |
| PLUG RETENTION FORCE (INITIAL / AFTER TEST) | INITIAL : $0.15N(15gf) \times n + 2.0N$ MIN. / AFTER TEST : $0.15N(15gf) \times n + 1.0N$ MIN. |
| PRODUCT SPECIFICATION | PRS-1880 |
| TEST REPORT | TR-13103 |
| PACKING STANDARD | PST-14006 |
| INSTRUCTION MANUAL | HIM-14010 |
| ASSEMBLY MANUAL | ASM-12002 |
| APPEARANCE CRITERIA No. | QLS-A*** |

※ “n” IS THE NUMBER OF PIN

Rev.4

Receptacle for Cable Assembly

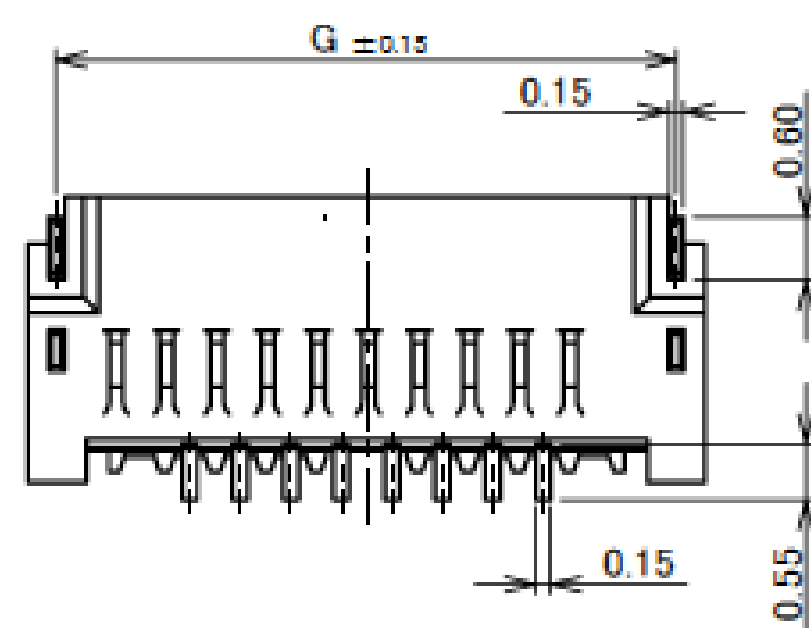
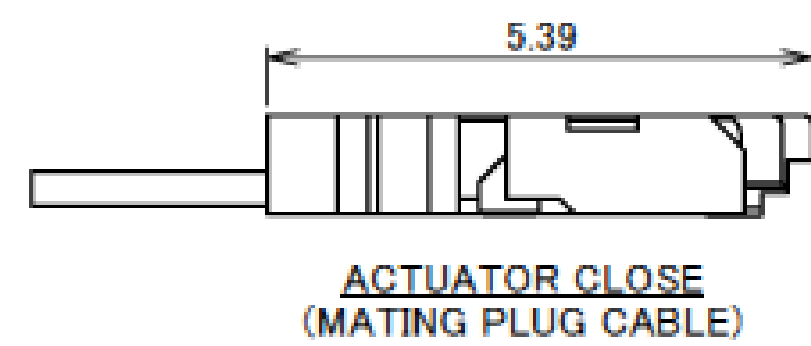
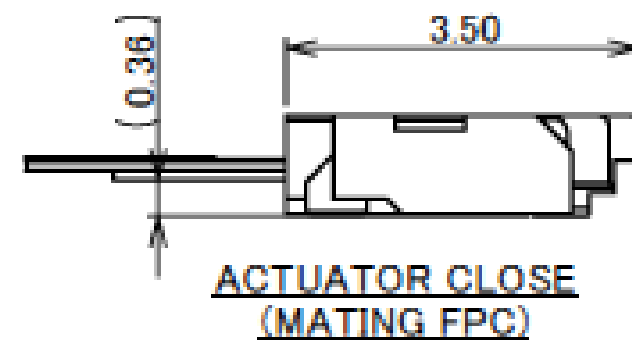
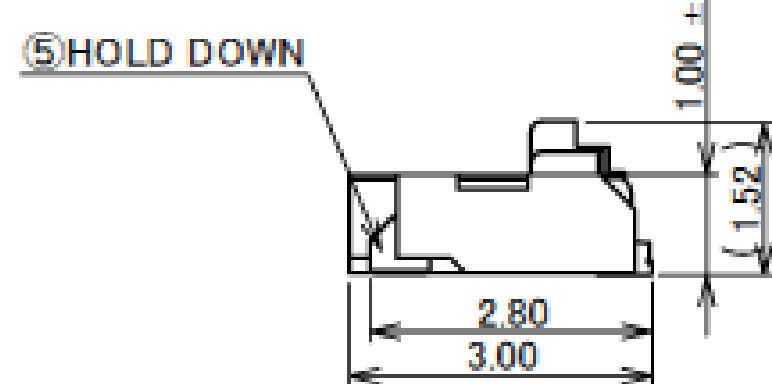
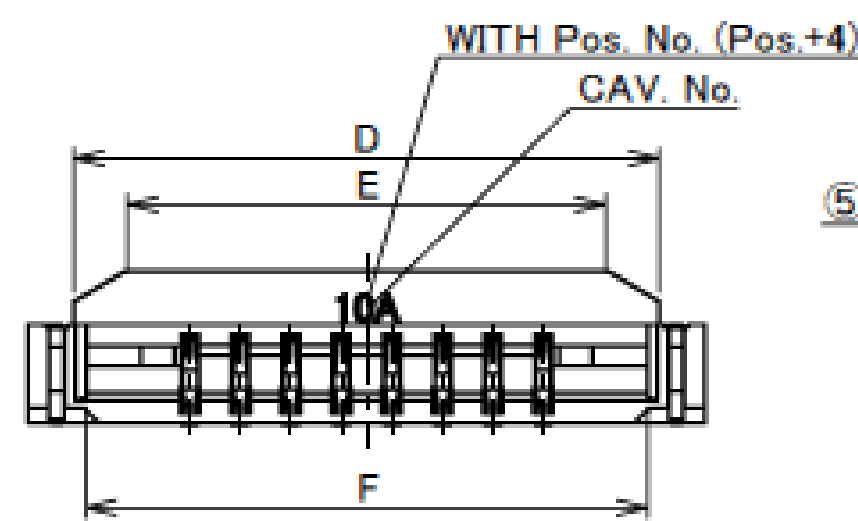
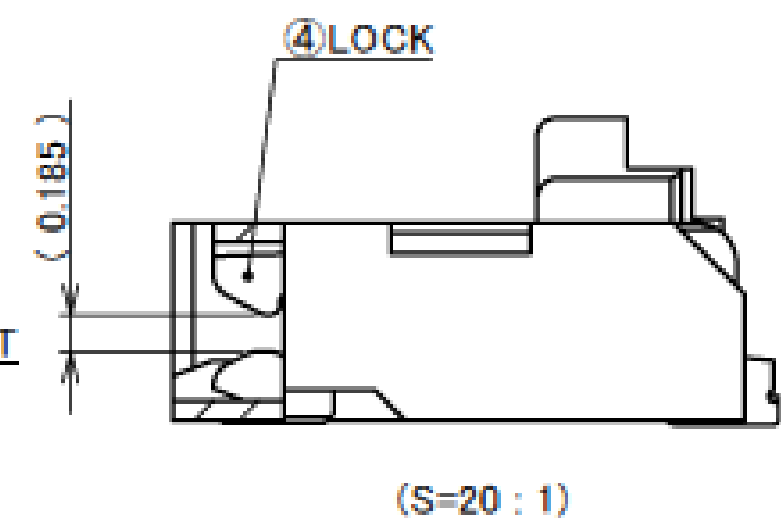
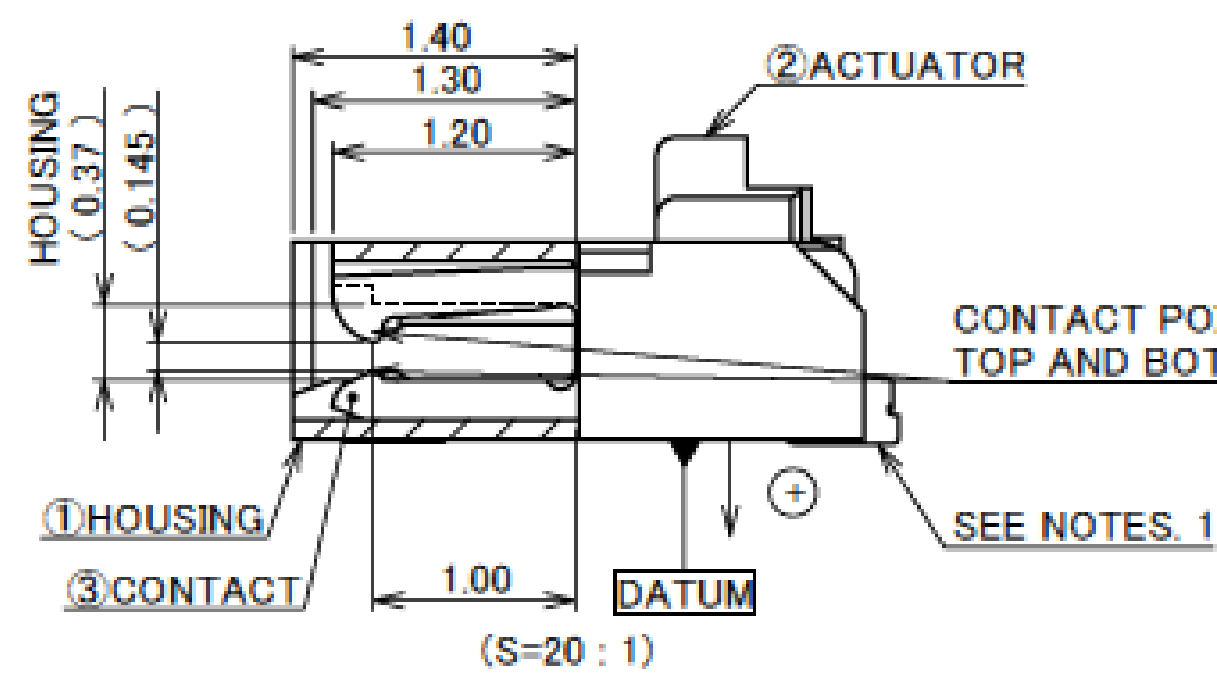
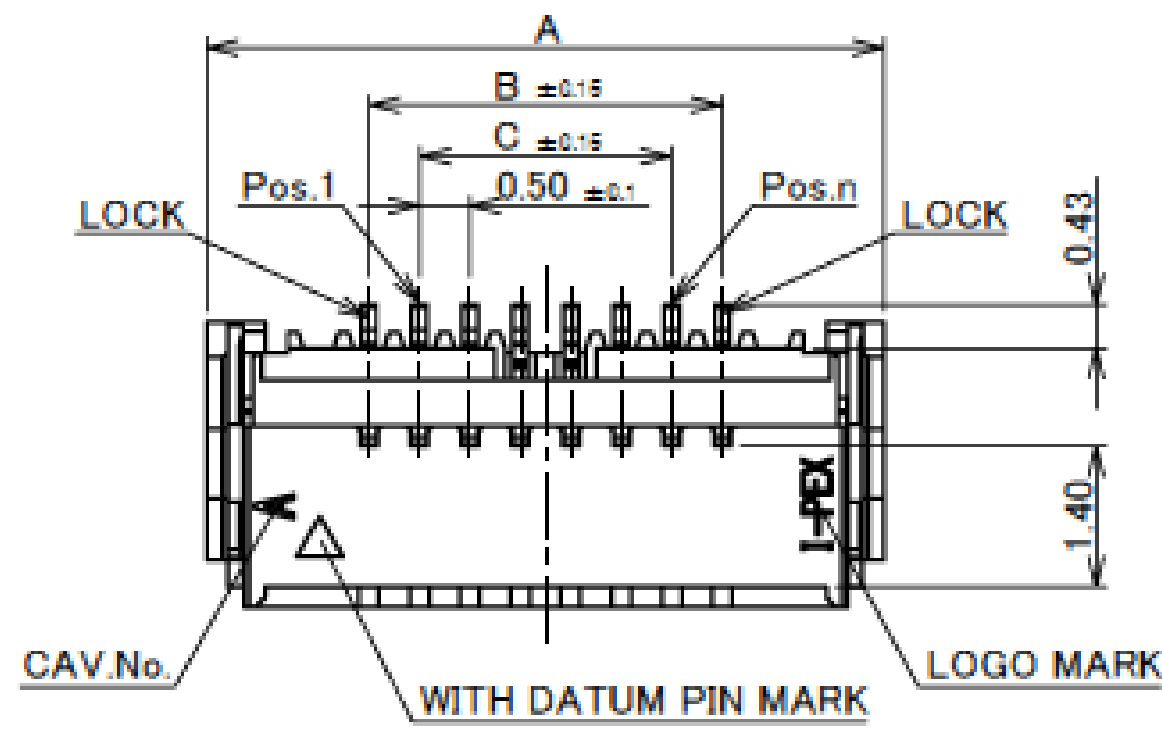
Recommended P/N 20597-0**E-02



CAUTION VISIT OUR WEBSITE FOR LATEST VERSIONS OF INSTRUCTION MANUAL NO. HIM-14010 AND HIM-12019 TO HANDLE THE PRODUCT PROPERLY AND SAFELY.

| PART No. | POS. | A | B | C | D | E | F | G |
|----------------|------|-------|-------|------|-------|------|-------|-------|
| 20597-006E-02 | 6 | 6.70 | 3.50 | 2.50 | 5.80 | 4.80 | 5.56 | 6.15 |
| 20597-008E-02 | 8 | 7.70 | 4.50 | 3.50 | 6.80 | 5.80 | 6.56 | 7.15 |
| 20597-010E-02 | 10 | 8.70 | 5.50 | 4.50 | 7.80 | 6.80 | 7.56 | 8.15 |
| ◆20597-020E-02 | 20 | 13.70 | 10.50 | 9.50 | 12.80 | 6.80 | 12.56 | 13.15 |

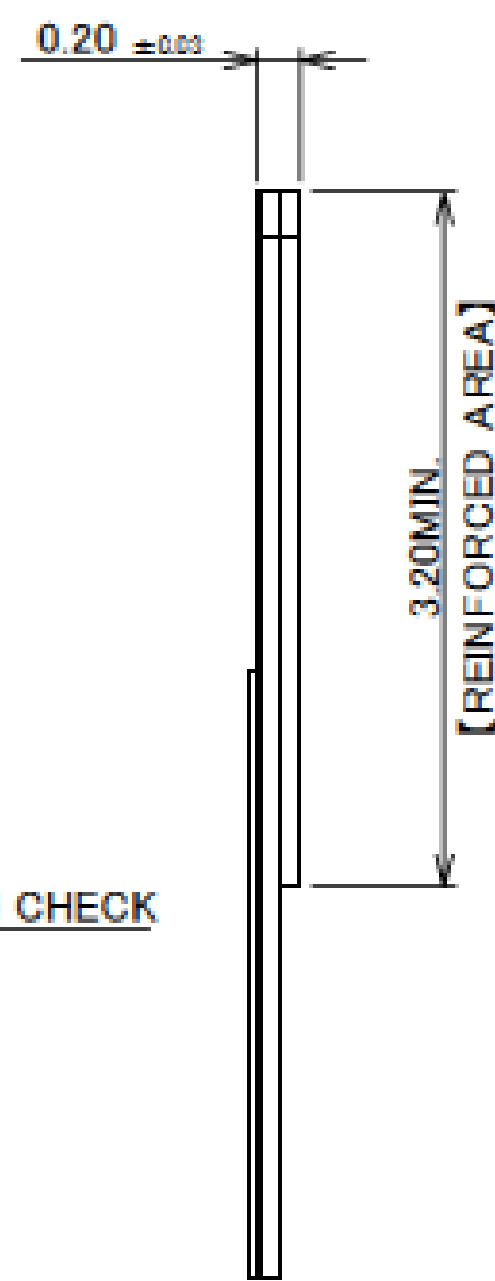
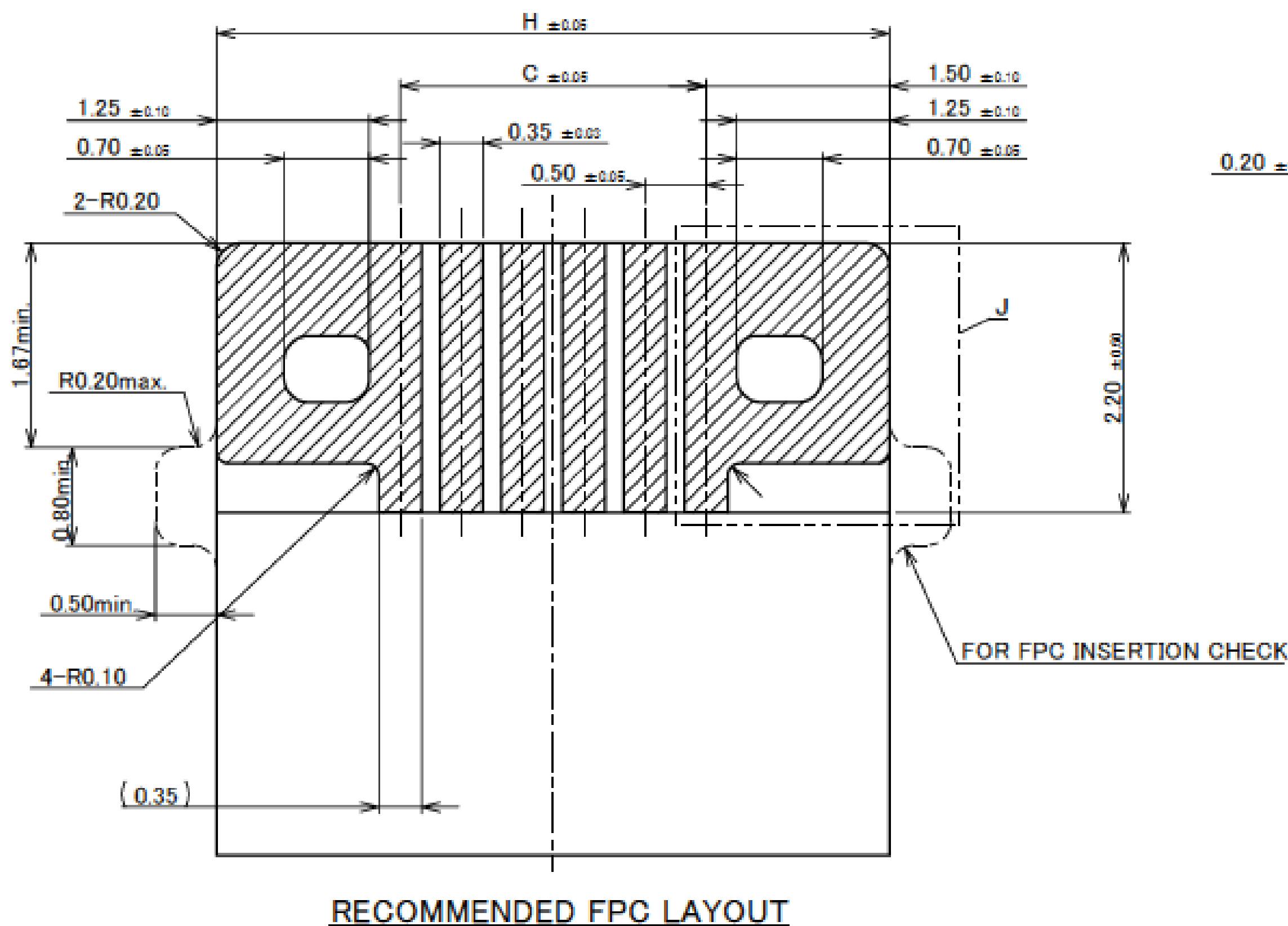
◆MARK MEANS NOT AVAILABLE



| | | | |
|---|-----------|-----------------|--|
| 5 | HOLD DOWN | PHOSPHOR BRONZE | Sn 2~6 μm MIN.OVER Ni 1.0 μm MIN. |
| 4 | LOCK | PHOSPHOR BRONZE | Au 0.03 μm MIN. OVER Ni 1.0 μm MIN. |
| 3 | CONTACT | PHOSPHOR BRONZE | CONTACT AREA : Au 0.1 μm MIN. OVER Ni 1.0 μm MIN. |
| 2 | ACTUATOR | LCP | SOLDERING AREA : Au 0.03 μm MIN. OVER Ni 1.0 μm MIN. |
| 1 | HOUSING | LCP | UL94V-0, BEIGE |

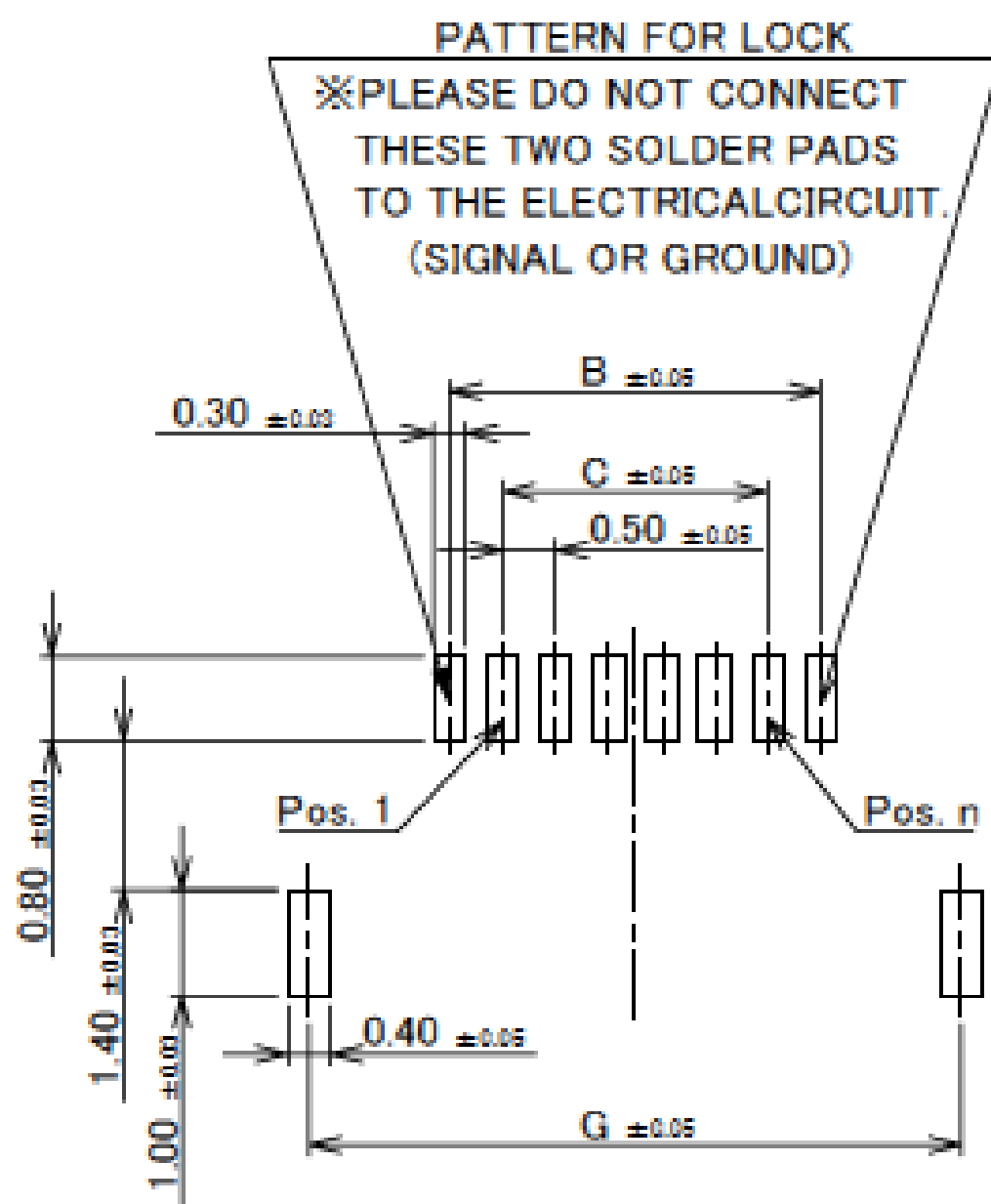
NOTES
1. CONTACT TAIL IS PROJECTION FROM HOUSING IN THE + DIRECTION. (0~0.06)

Rev.8

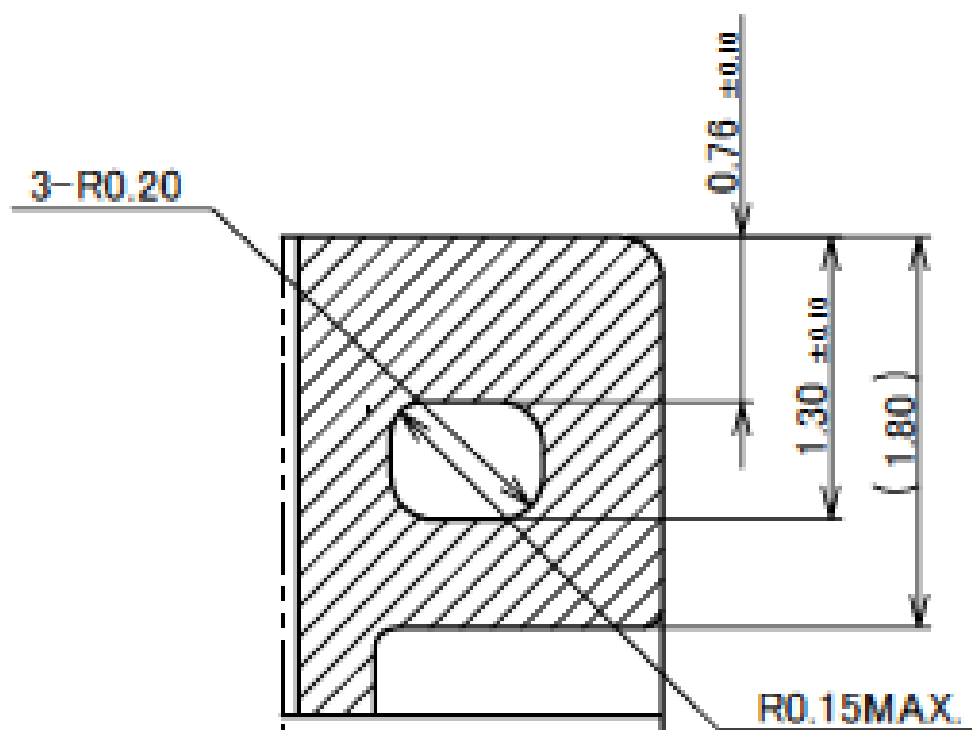


| PART No. | POS. | B | C | G | H |
|----------------|------|-------|------|-------|-------|
| 20597-006E-02 | 6 | 3.50 | 2.50 | 6.15 | 5.50 |
| 20597-008E-02 | 8 | 4.50 | 3.50 | 7.15 | 6.50 |
| 20597-010E-02 | 10 | 5.50 | 4.50 | 8.15 | 7.50 |
| ◆20597-020E-02 | 20 | 10.50 | 9.50 | 13.15 | 12.50 |

◆MARK MEANS NOT AVAILABLE



RECOMMENDED PCB LAYOUT & METAL MASK LAYOUT
METAL MASK THICKNESS : t=0.12mm

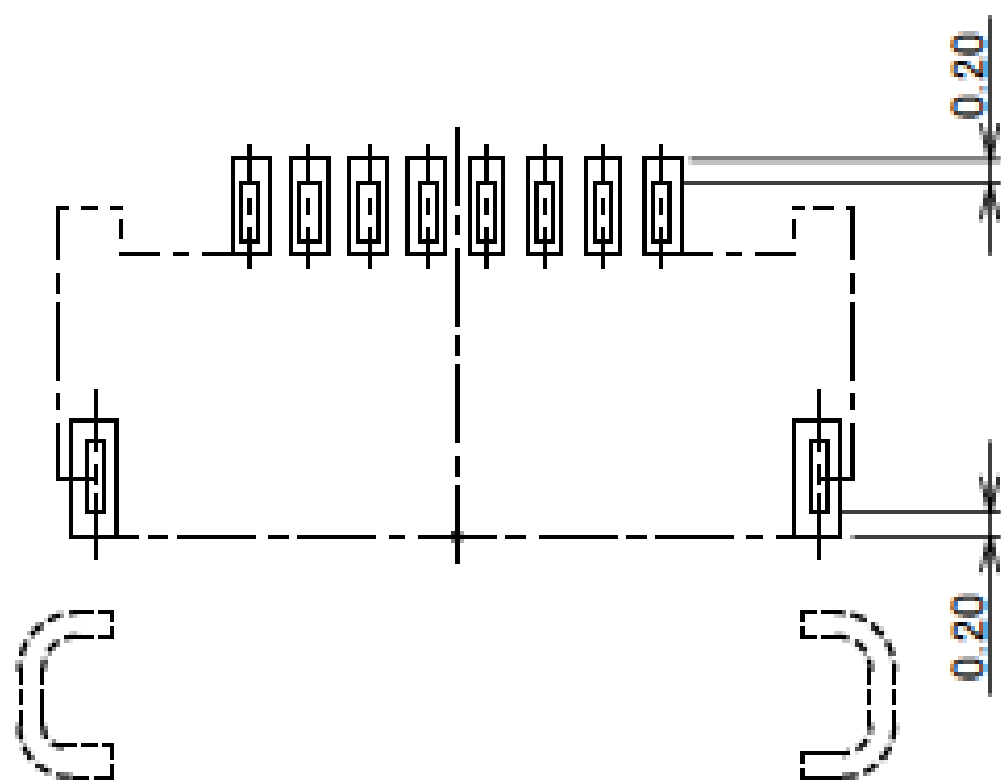


DETAIL J
(S=20/1)

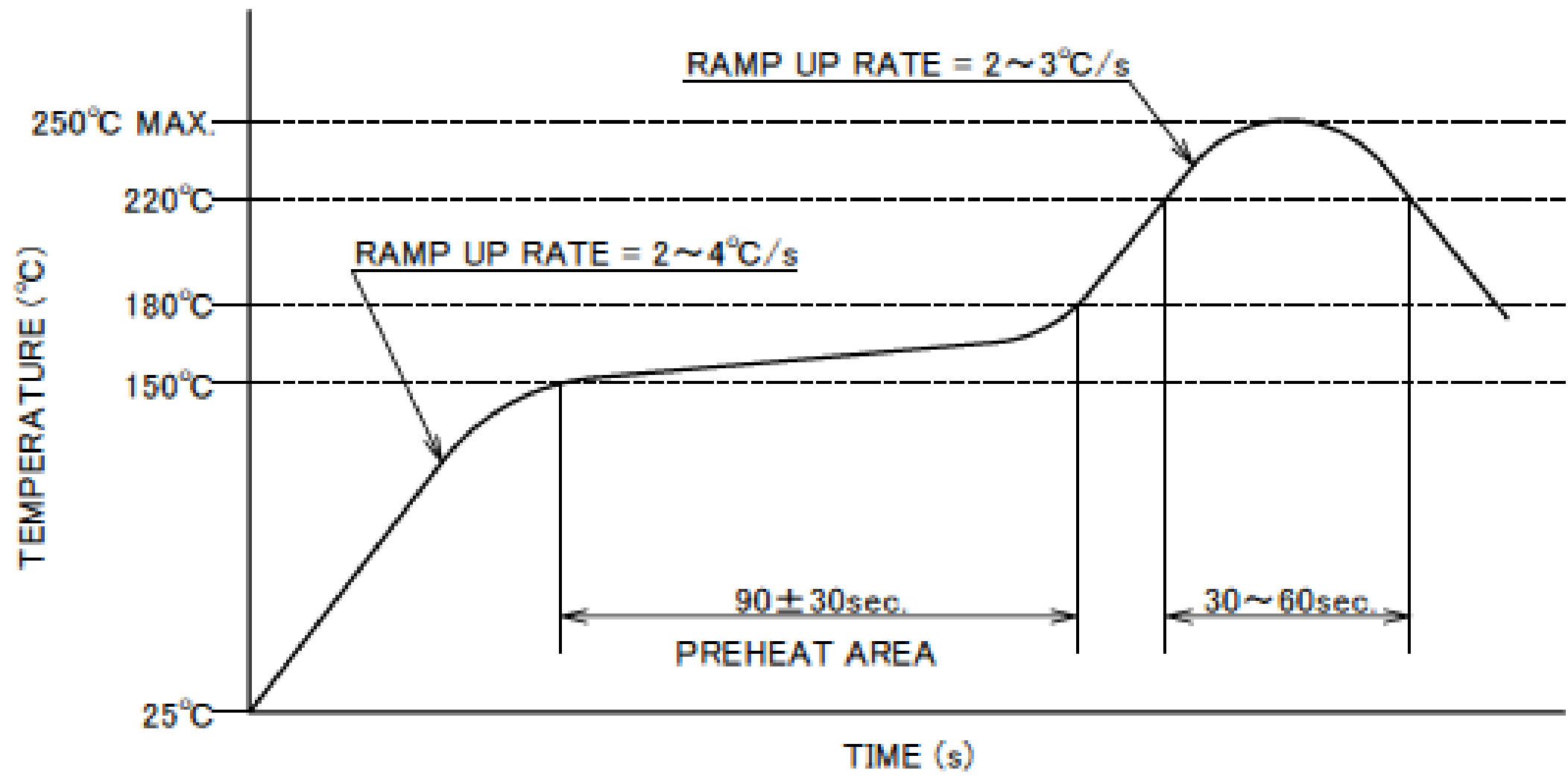
NOTES
2.MATERIAL
COVER FILM : PI
CONDUCTOR : COPPER(RARE)
BASE FILM : PI
STIFFENER : PI
ADHESIVE : THERMOSETTING ADHESIVE
3.FINISH
Au OVER Ni PLATING.

Rev.8

Receptacle for Cable Assembly



CONNECTOR ON RECOMMENDED FOOTPRINT PATTERN



REFLOW TEMPERATURE PROFILE
SENJU METAL INDUSTRY CO., LTD. : M705-SHF(Sn96.5 Ag3.0 Cu0.5)

Rev.8

| ITEMS | SPECIFICATION |
|---|--|
| RATING VOLTAGE | 50V AC (PER CONTACT) |
| RATING AMPERAGE | 0.5A DC [FPC] (PER CONTACT) 0.7A DC [AWG#34] (PER CONTACT) |
| OPERATING TEMPERATURE | 233~358K(−40°C~85°C) |
| OPERATING HUMIDITY | 80% MAX. |
| CONTACT RESISTANCE | INITIAL : 40mohm MAX. / AFTER TEST : 120mohm MAX. |
| INSULATION RESISTANCE | INITIAL : 1000Mohm MIN. / AFTER TEST : 500Mohm MAX. (PLUG CABLE) 100Mohm MIN. (FPC) |
| DIELECTRIC WITHSTANDING VOLTAGE | AC200V 1min |
| DURABILITY | 20TH CYCLES |
| ACTUATOR LOCKING FORCE (INITIAL / 20TH CYCLES) | INITIAL/ 20TH CYCLES : 0.6N(61gf) × (n + 2) MAX. |
| ACTUATOR UNLOCKING FORCE (INITIAL / 20TH CYCLES) | INITIAL/ 20TH CYCLES : 0.05N(5gf) × (n + 2) MIN. |
| PLUG AND FPC RETENTION FORCE (INITIAL / AFTER TEST) | INITIAL : 0.15N(15gf) × n + 2.0N MIN. / AFTER TEST : 0.15N(15gf) × n + 1.0N MIN. |
| COPLANARITY | 0.08 MAX. |
| PRODUCT SPECIFICATION | PRS-1880 |
| TEST REPORT | TR-13103 |
| PACKING STANDARD | PST-13047 |
| INSTRUCTION MANUAL | HIM-14010 (FOR MATING PLUG CABLE) HIM-12019 (FOR MATING FPC) |
| APPEARANCE CRITERIA No. | QLS-A*** |

※ “n” IS THE NUMBER OF PIN

Rev.8

Custom Connectors Available

 RF
Connectors

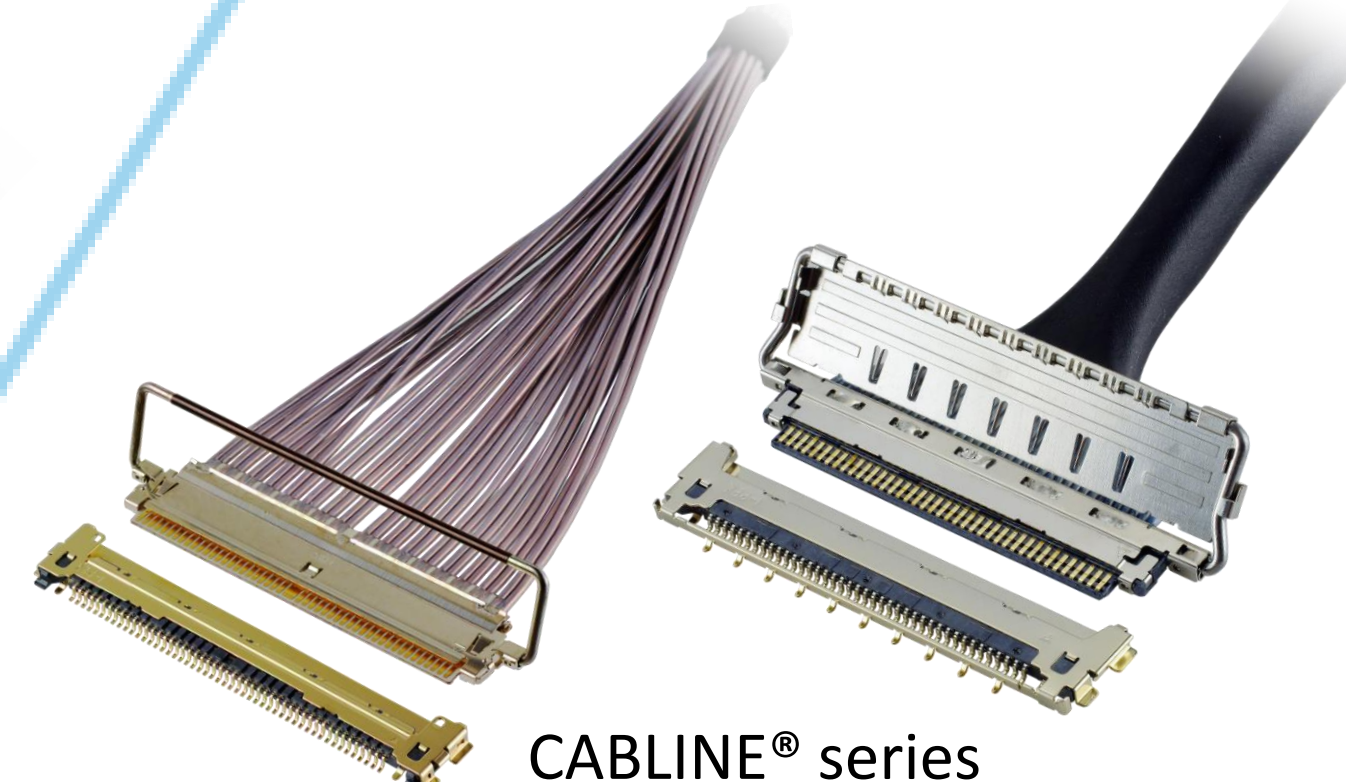
MHF® series



CABLINE® series



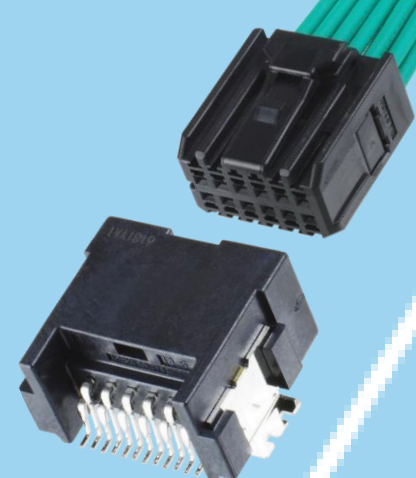
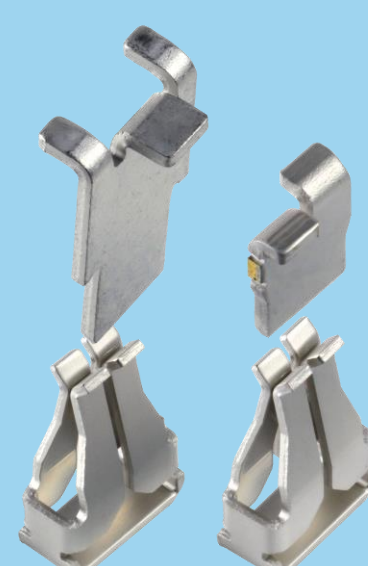
Micro-coaxial/Twinax
Connectors



Wire-to-Board
Connectors/
Terminals

AP series

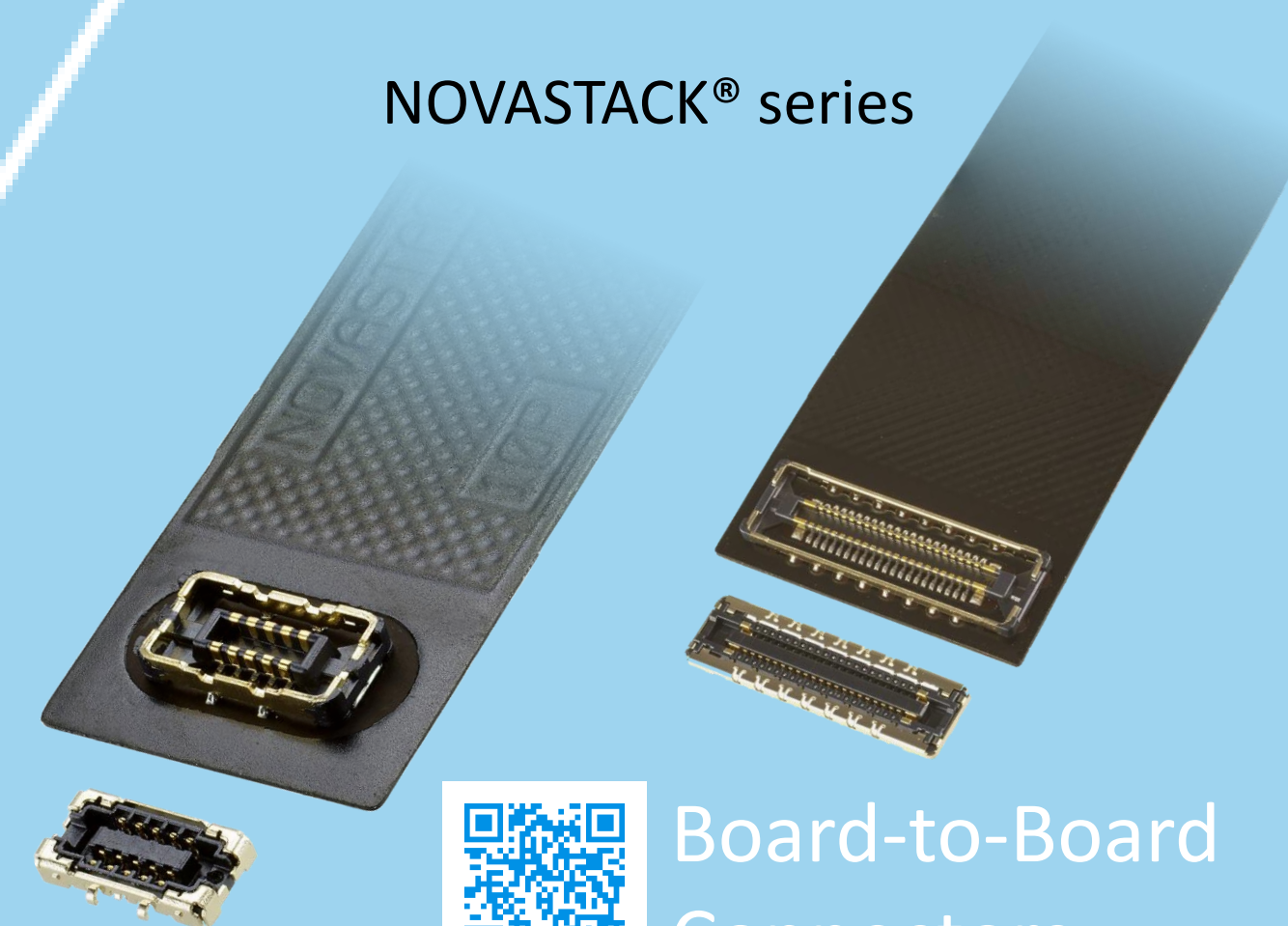
ISH® series



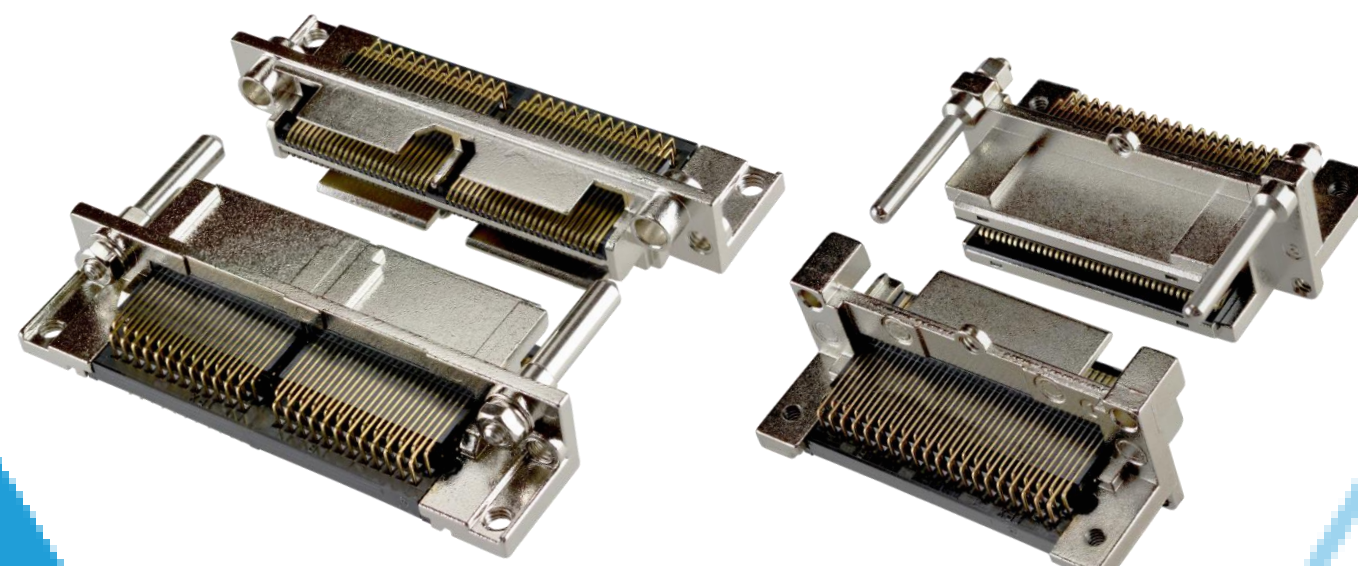
NOVASTACK® series



Board-to-Board
Connectors



I/O
Connectors



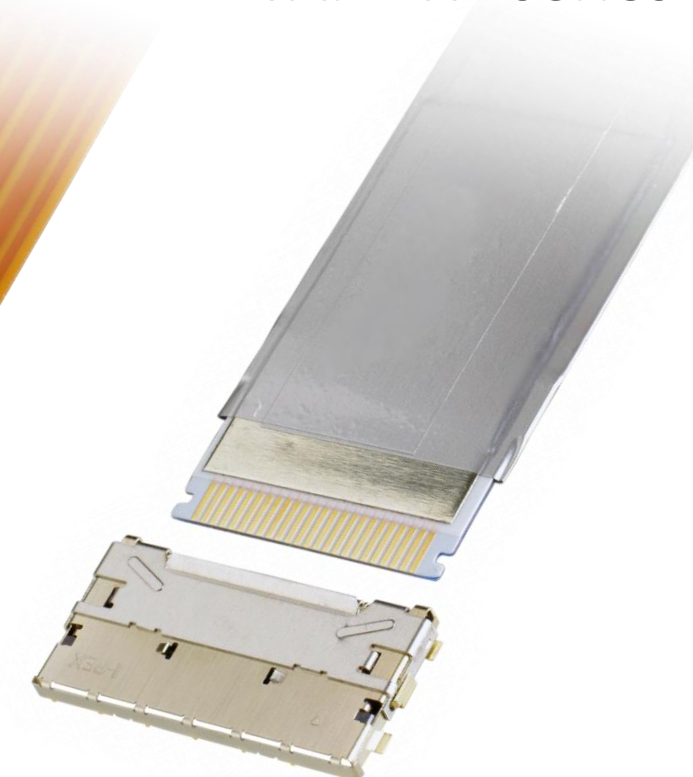
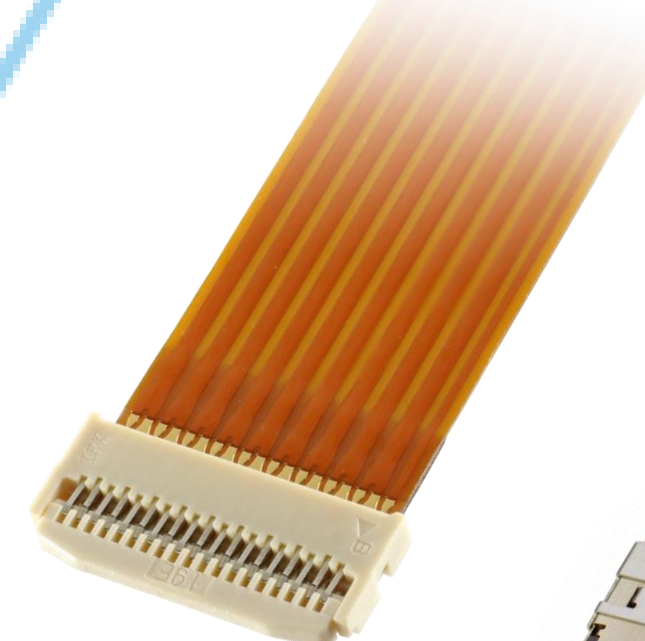
MINIDOCK™ series



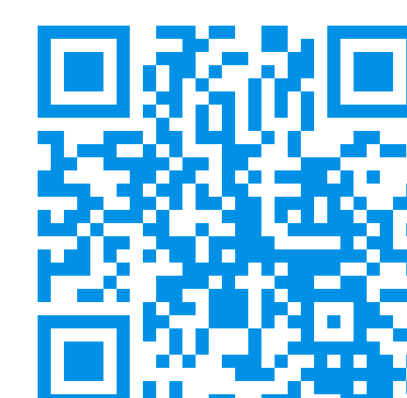
FPC/FFC
Connectors

MINIFLEX® series

EVAFLEX® series



Inquiry



I-PEX, MHF, CABLINE, NOVASTACK, ISH, IARPB, MINIFLEX, EVAFLEX, MINIDOCK and ZenShield are registered trademarks of I-PEX Inc. Please note that the contents in the catalog might be changed without prior notification. I-PEX Inc. assumes no responsibility for any inaccuracies or obligation to update information on these documents. Please be sure to read and understand the latest "Precautions for Use" and "Instruction Manual" before you use our products. We shall not be responsible for any defects, damages or troubles in case you use our products without following the precautions for use. Please feel free to contact our sales representatives when you use our products for any applications that require very high reliability and safety, or that relate to human life (ex. nuclear power control, aerospace, transportation, medical equipment, safety equipment etc.).

Contact your sales representative
or more detailed information.

www.i-pex.com



I-PEX

© I-PEX Inc. 2025
All rights reserved