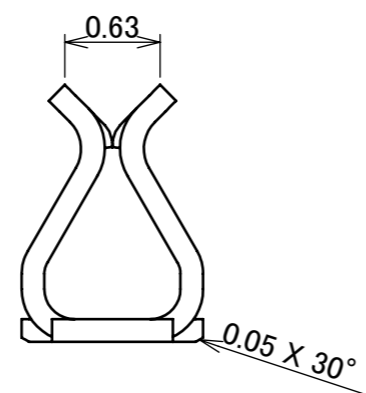
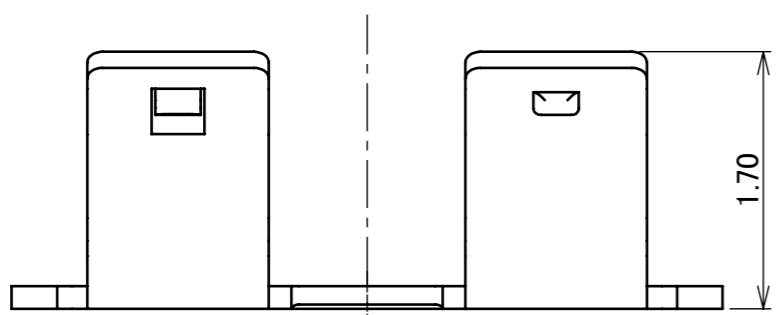
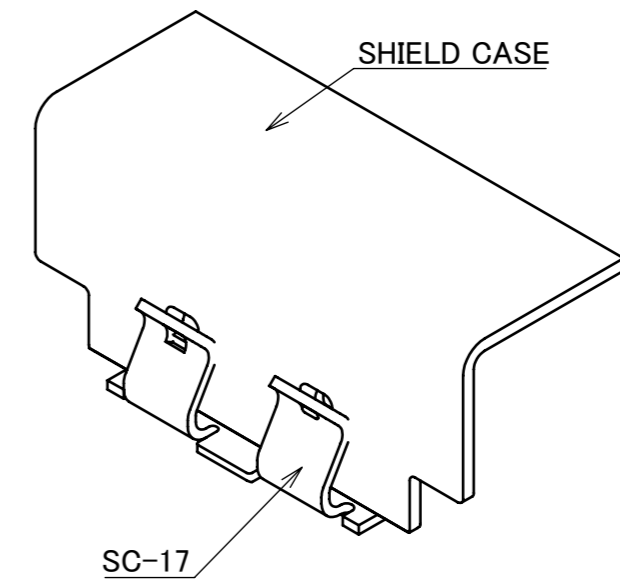
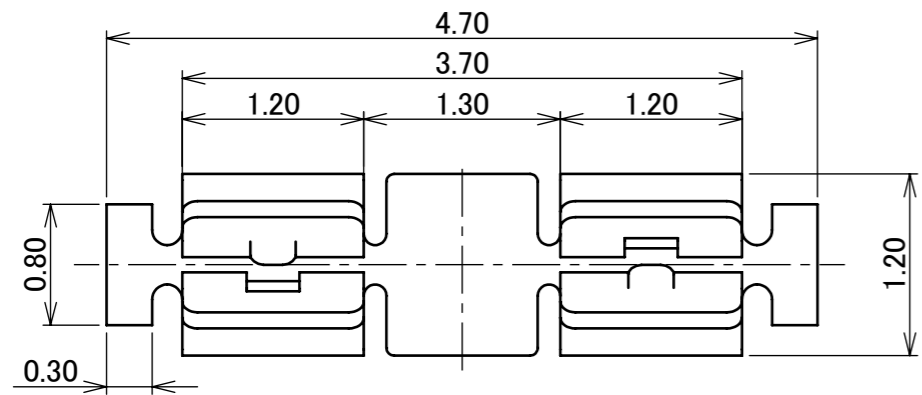
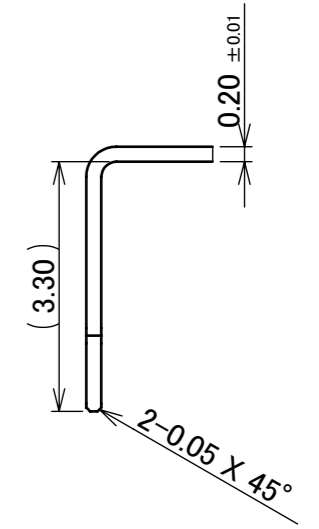
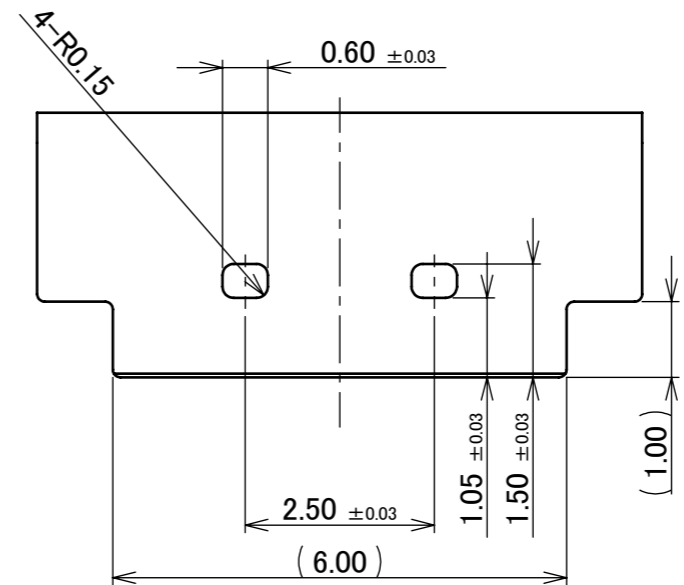


Recommended P/N 3394-0001

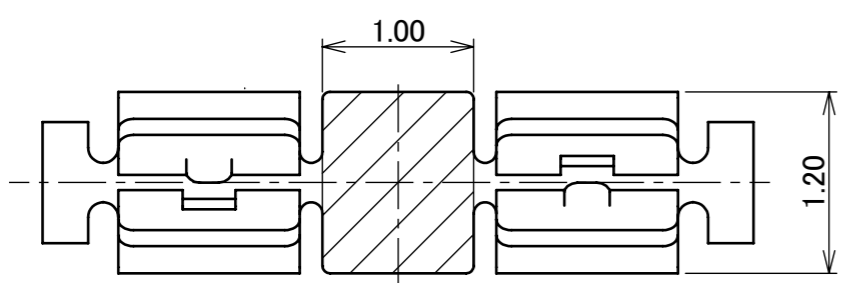
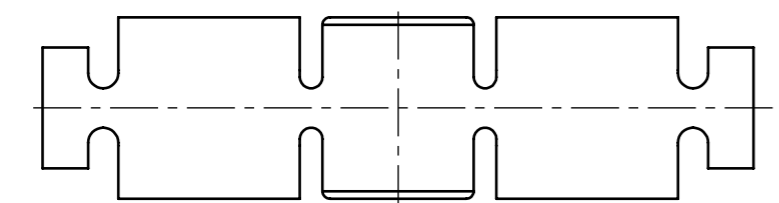
PART NO.  
3394-0001



SHIELD CASE MATING STATE(SCALE 10 : 1)



SHIELD CASE SHAPE (SCALE 10 : 1)

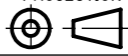


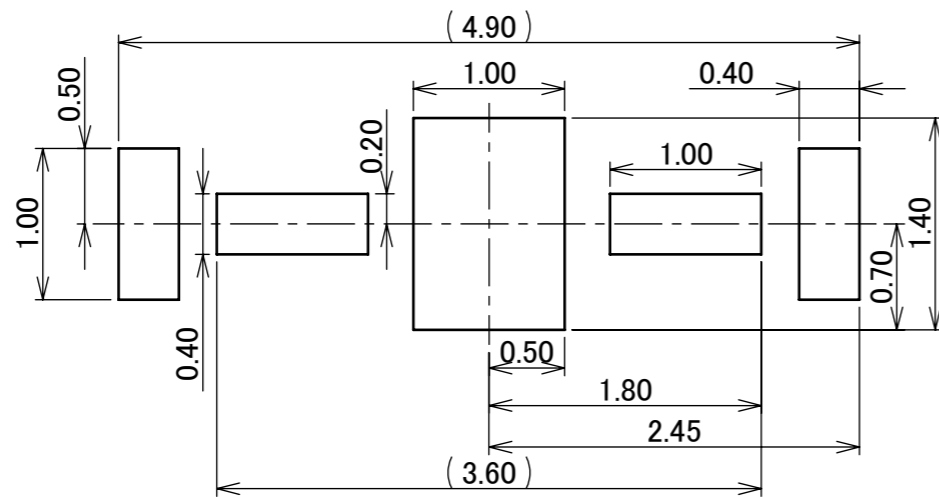
PICK UP AREA

1	CONNECTOR	SUS301-EH	UNDER PLATE : Ni 0.6 μm~1.2 μm. ALL OVER : Sn-Ag-Cu 0.8~1.6 μm.
NO.	DESCRIPTION	MATERIAL	FINISH , REMARKS

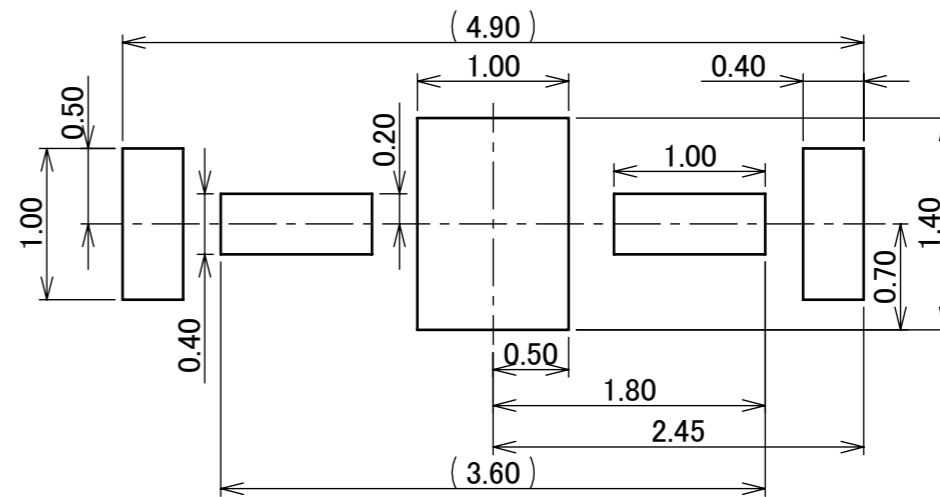
5	Z241224	Y.F	2024/09/09	S.S	ANGLE	±2°	6 OVER 30 MAX.	±0.3	PROJECTION ⊕	SERIES No. R3	CUSTOMER COPY		
4	Z221376	M.H	2022/12/07	Y.H	6 MAX.	±0.2	30 OVER 120 MAX.	±0.5					
3	Z181717	SEI	2018/12/26	TAK	GENERAL TOLERANCE.				TITLE SC-17	SCALE 5:1	UNIT mm	I-PEX	
2	Z171199	R.H	2017/10/18	M.T	DWG.	DATE							
1	Z170901	R.H	2017/08/08	M.T	S.Kawamura			2017/07/10					
0	Z170785	S.K	2017/07/10		CHK.								
REV.	ECN	BY	DATE	APP.	APP.				DWG. No.	3394	SIZE A3	SHEET 1/5	REV. 5
REVISION RECORD					M.Takemoto								

ITEMS	SPECIFICATION
OPERATING TEMPERATURE	233~358K(-40°C~+85°C)
OPERATING HUMIDITY	85% MAX.(NON-CONDENSING)
CONTACT RESISTANCE (FOR GROUND CONTACT)	INITIAL : 120 mohm MAX. / AFTER TEST : $\triangleleft$ 40 mohm MAX.
DURABILITY	3 CYCLES
MATING FORCE (INITIAL / AFTER TEST)	29.5 N MAX.
UNMATING FORCE (INITIAL / AFTER TEST)	8.0 N MIN.
COPLANARITY	0.08 MAX.
PRODUCT SPECIFICATION	PRS-2438
TEST REPORT	TR-17096
PACKING STANDARD	PST-17094
INSTRUCTION MANUAL	HIM-17028
APPEARANCE CRITERIA No.	QLS-A***

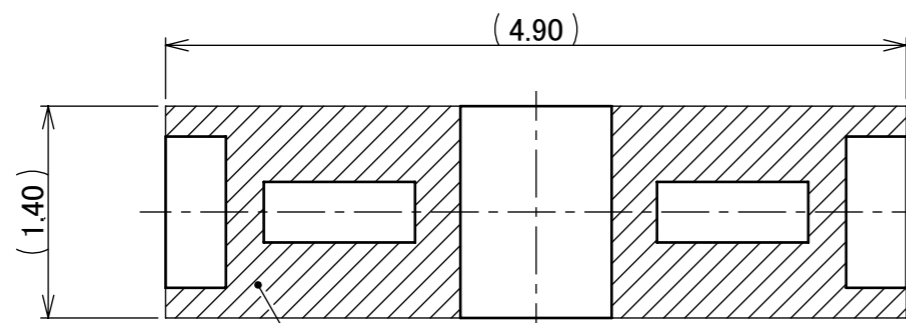
ANGLE	$\pm 2^\circ$	6 OVER 30 MAX.	$\pm 0.3$	PROJECTION 	SERIES No. R3	CUSTOMER COPY			
6 MAX.	$\pm 0.2$	30 OVER 120 MAX.	$\pm 0.5$						
GENERAL TOLERANCE.				TITLE SC-17	SCALE 5:1	<b>I-PEX</b>			
DWG.	DATE								UNIT mm
CHK.									SIZE A3
APP.									DWG. No. 3394
					SHEET 2/5	REV. 5			



**RECOMMENDED FOOTPRINT PATTERN LATOUT**



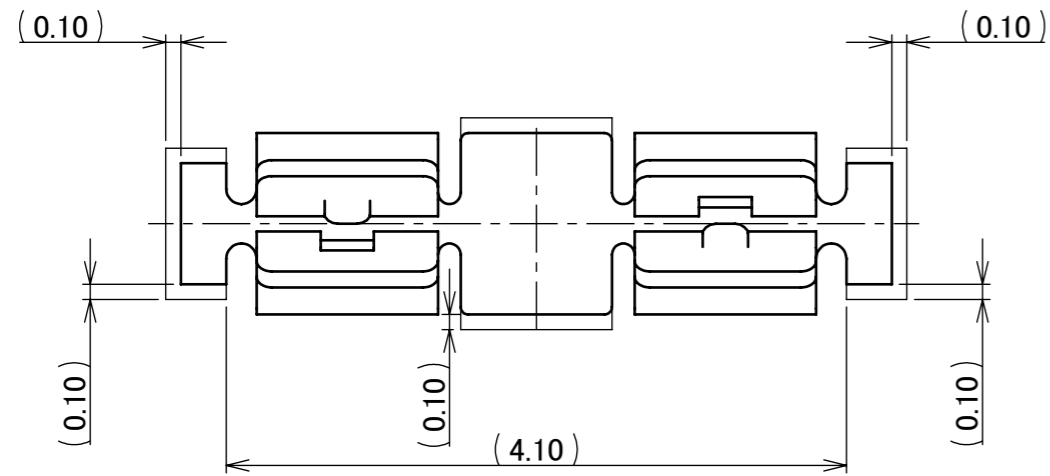
**RECOMMENDED METAL MASK LATOUT  
METAL MASK THICKNESS : T=0.12 mm)**



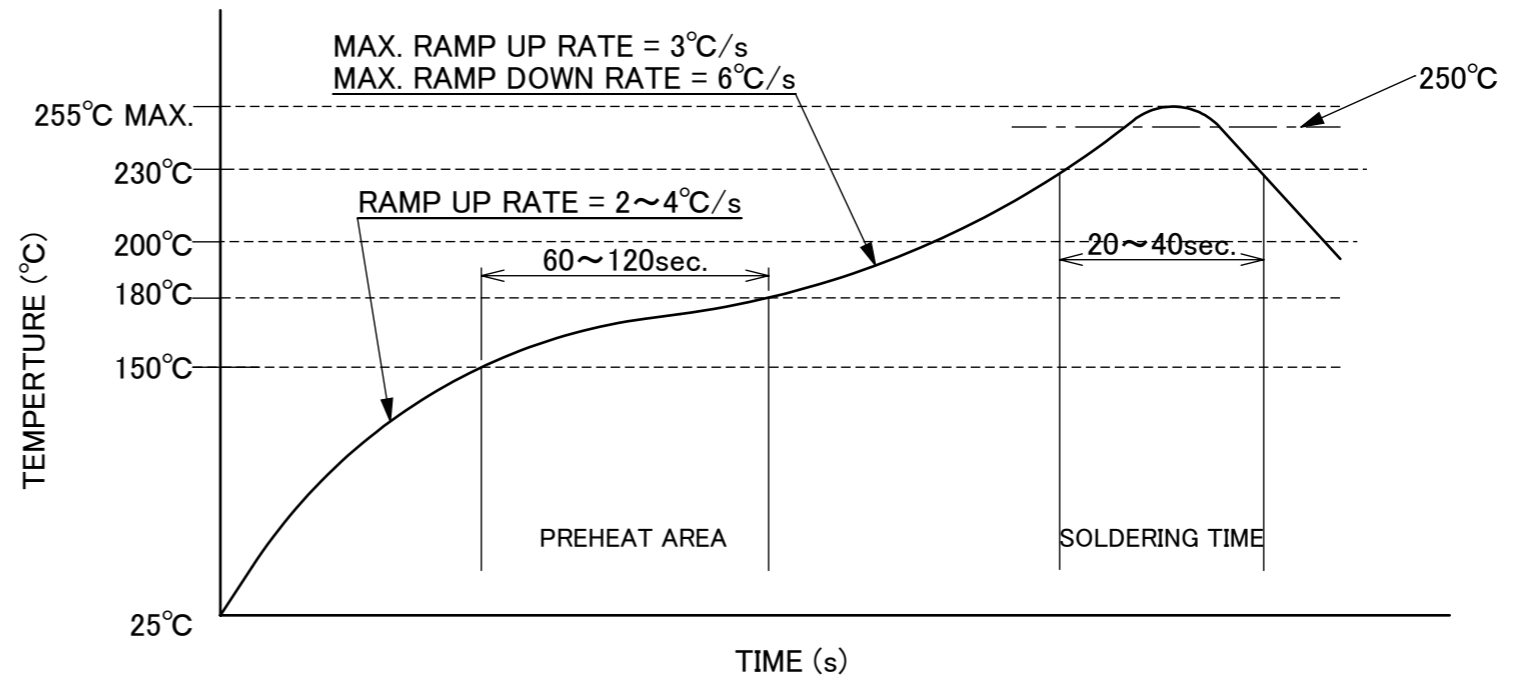
NOTE. 1

NOTES.  
1. THIS AREA CANNOT MOUNT ANOTHER COMPONENTS.

ANGLE	±2°	6 OVER 30 MAX.	±0.3	PROJECTION ⊕	SERIES No. R3	CUSTOMER COPY	
6 MAX.	±0.2	30 OVER 120 MAX.	±0.5				
GENERAL TOLERANCE.				TITLE SC-17		SCALE 5:1	<b>I-PEX</b>
DWG.	DATE			DWG. No. 3394		UNIT mm	
CHK.						SIZE A3	SHEET 3/5
APP.						REV. 5	



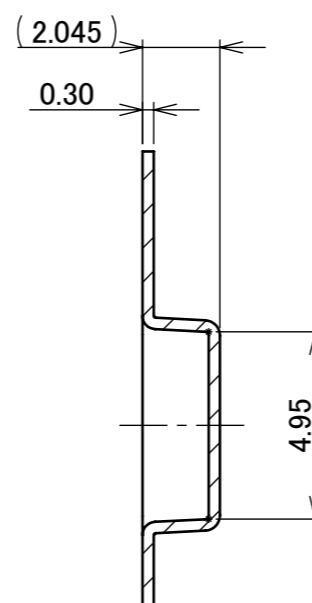
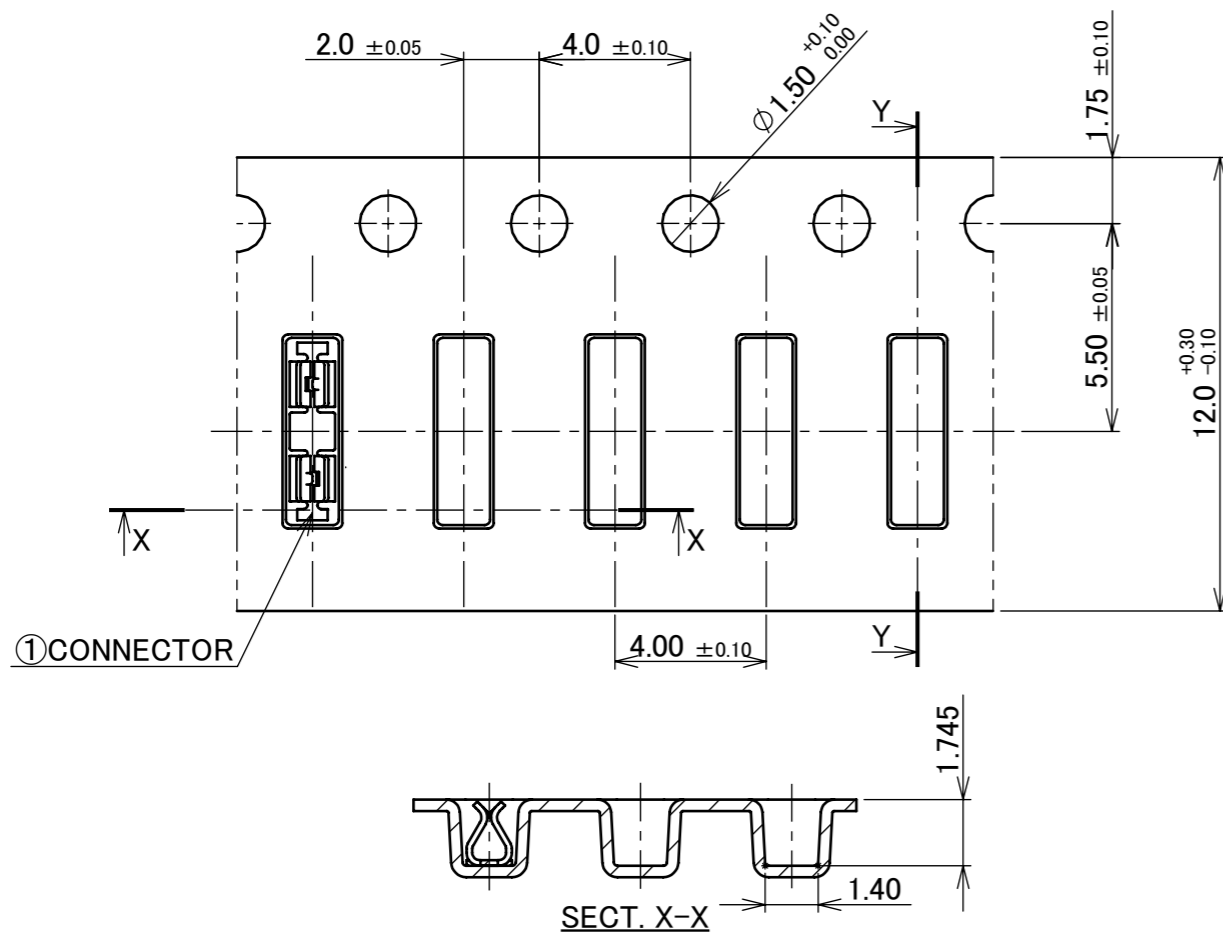
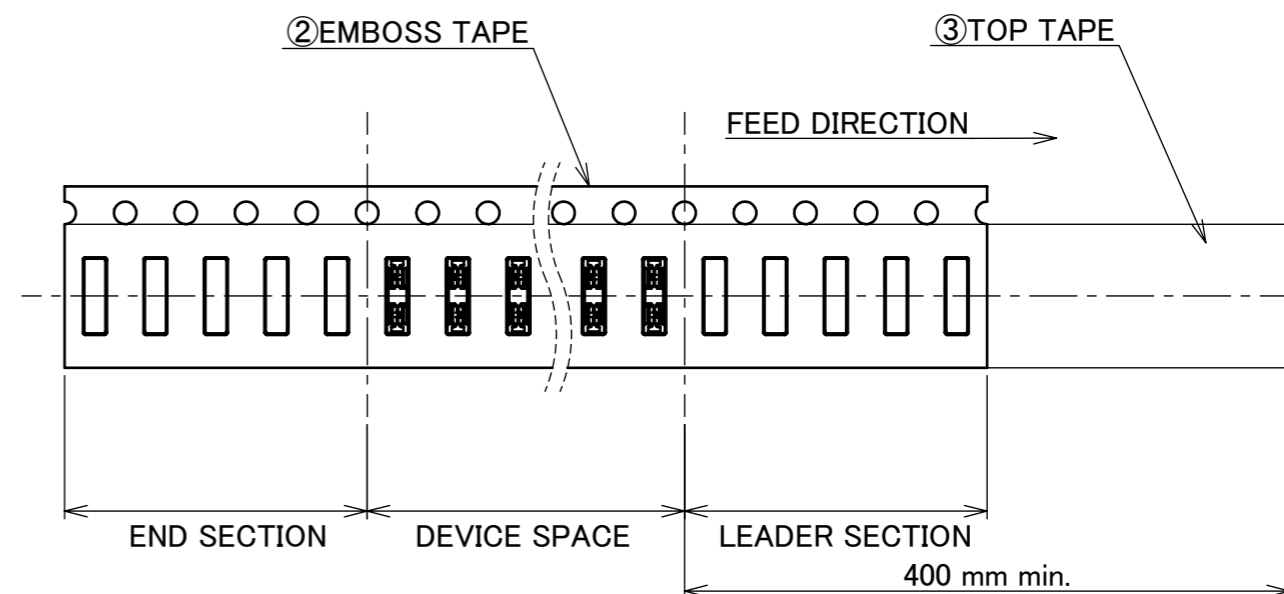
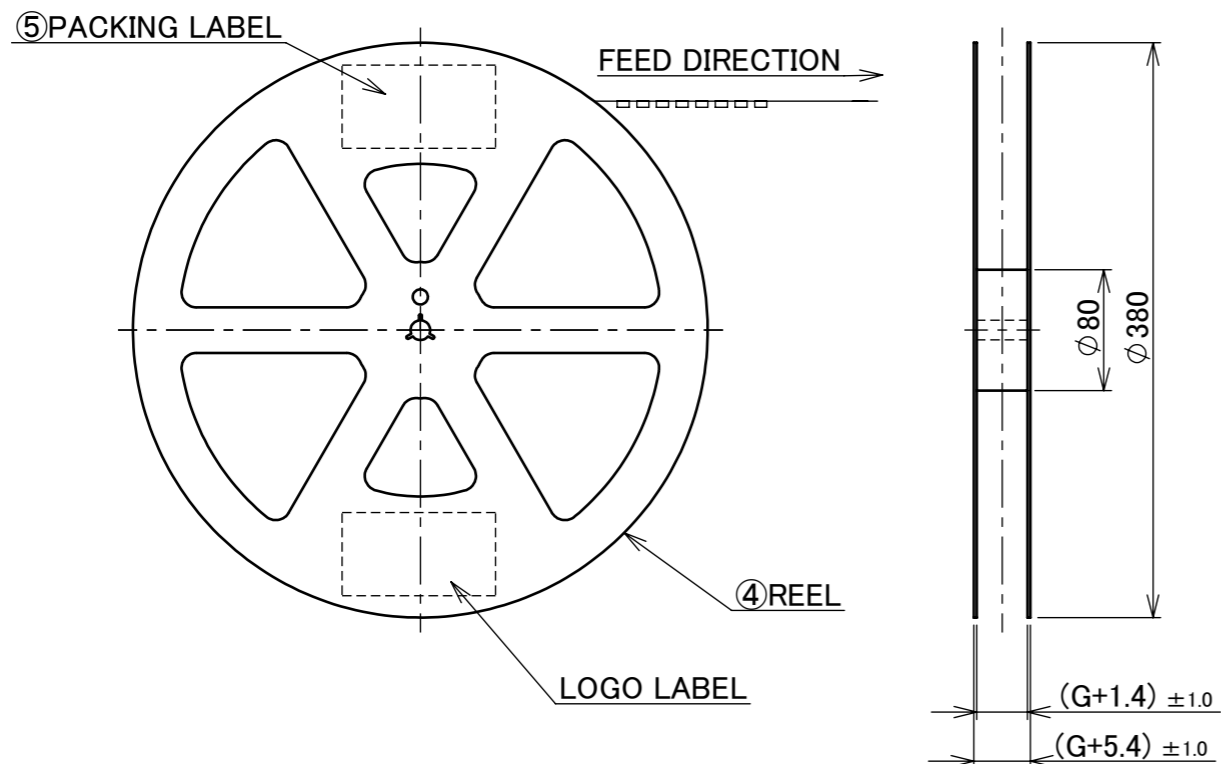
**CONNECTOR ON RECOMMENDED FOOTPRINT PATTERN LATOUT**



**REFLOW TEMPERATURE PROFILE**  
**SENJU METAL INDUSTRY CO., LTD. : M705-SHF(Sn96.5 Ag3.0 Cu0.5)**

ANGLE	±2°	6 OVER 30 MAX.	±0.3	PROJECTION 	SERIES No. R3	CUSTOMER COPY		
6 MAX.	±0.2	30 OVER 120 MAX.	±0.5					
GENERAL TOLERANCE.				TITLE SC-17	SCALE 5:1	<b>I-PEX</b>		
DWG.	DATE							
CHK.								
APP.								
				DWG. No.	3394	SIZE A3	SHEET 4/5	REV. 5

PART NO.	QTY. PER EMBOSS REEL (PIECES / REEL)	QTY. PER PACKING CARTON (REELS / CARTON)
3394-0001	5000 / REEL	5000 / REEL × 5 / CARTON = 25000



SECT. Y-Y

NOTES.

- TAPING SPECIFICATION FOLLOWS JIS C 0806 (IEC 60286-3).
- MAKE EMPTY SECTION OF LEADER AND END ON EACH END OF THE TAPE.
- TOP TAPE SHALL NOT STICK OUT FROM EMBASS TAPE.
- TOP TAPE SHALL NOT COVER FEED HOLE.

NO.	DISCRIPTION	MATERIAL	FINISH , REMARKS
5	PACKING LABEL	-	-
4	REEL	PS	ANTI-STATIC TYPE BLACK
3	TOP TAPE	PET t=0.062 TRANSPARENCY	ANTI-STATIC TYPE
2	EMBASS TAPE	PS t=0.3 TRANSPARENCY	ANTI-STATIC TYPE
1	CONNECTOR	-	-

ANGLE	±2°	6 OVER 30 MAX.	±0.3	PROJECTION ⊕	SERIES No. R3	CUSTOMER COPY
6 MAX.	±0.2	30 OVER 120 MAX.	±0.5			
GENERAL TOLERANCE.				TITLE	SCALE	
DWG.	DATE			SC-17	5:1	
CHK.					UNIT	
APP.					mm	
				DWG. No.	3394	SIZE
						A3
						SHEET
						5/5
						REV.
						5