

Recommended P/N 20708-0**E-01

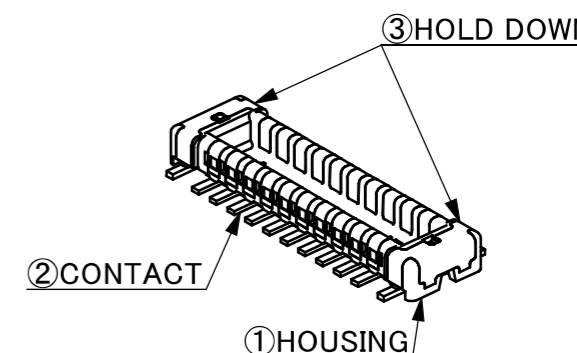
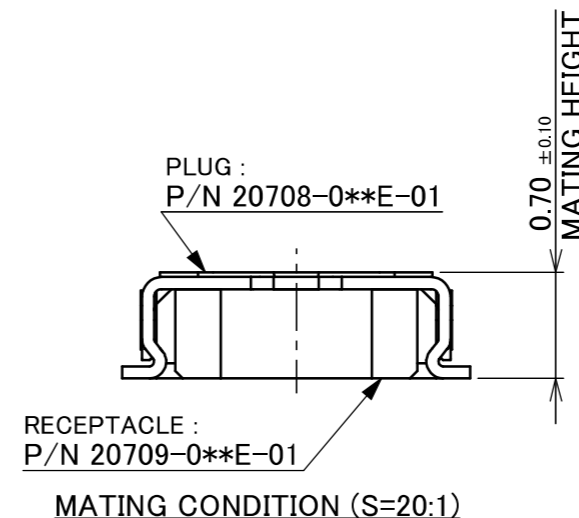
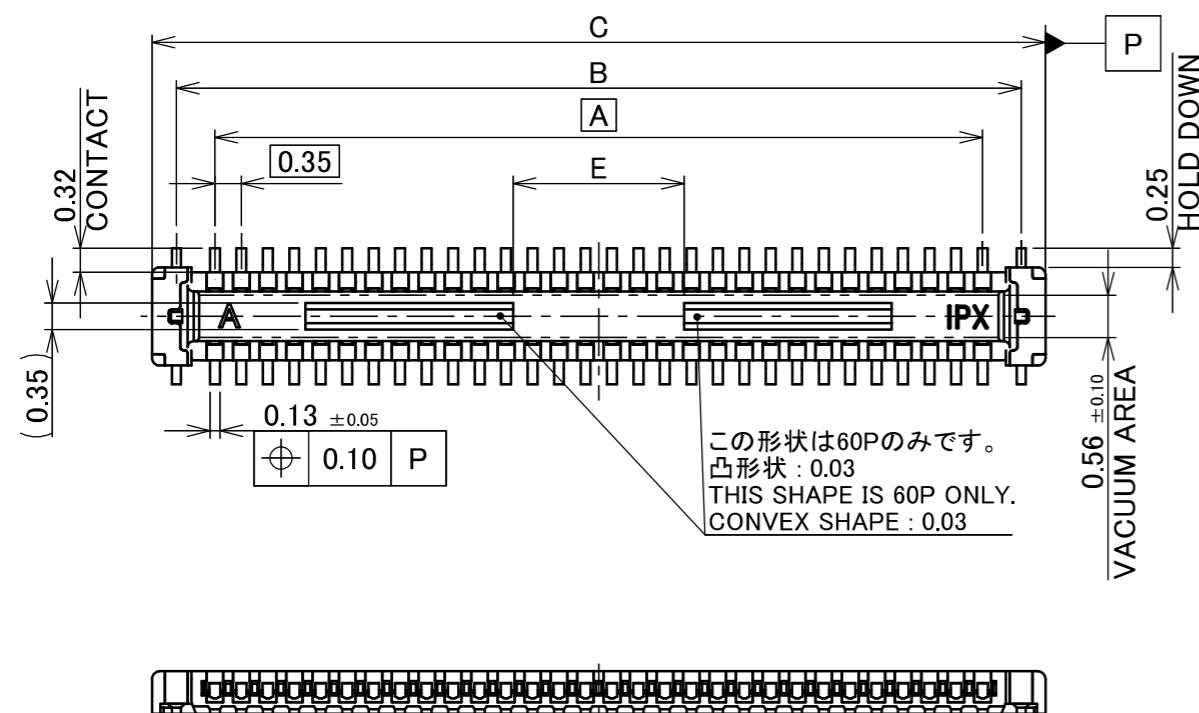
PART No.	Pos.	A	B	C	D	E
20708-010E-01	10	1.40	2.42	3.06	3.92	-
20708-014E-01	14	2.10	3.12	3.76	4.62	-
20708-018E-01	18	2.80	3.82	4.46	5.32	-
20708-020E-01	20	3.15	4.17	4.81	5.67	-
20708-024E-01	24	3.85	4.87	5.51	6.37	-
20708-030E-01	30	4.90	5.92	6.56	7.42	-
20708-034E-01	34	5.60	6.62	7.26	8.12	-
20708-040E-01	40	6.65	7.67	8.31	9.17	-
20708-050E-01	50	8.40	9.42	10.06	10.92	-
20708-060E-01	60	10.15	11.17	11.81	12.67	2.26



Halogen Free



RoHS Compliant



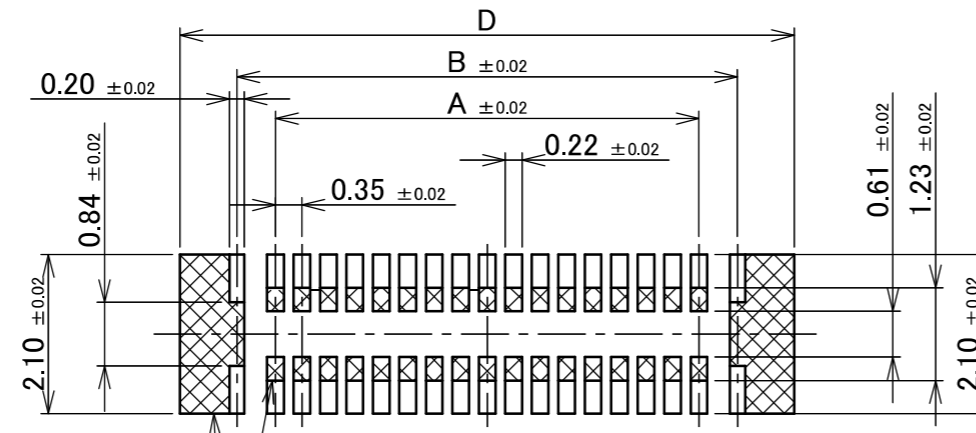
3	HOLD DOWN	CORSON ALLOY	ALL OVER Ni 1.27 μm MIN. CONTACT PART Au 0.1 μm MIN. SOLDERING PART Au 0.01 μm MIN.
2	CONTACT	CORSON ALLOY	ALL OVER Ni 1.27 μm MIN. CONTACT PART Au 0.1 μm MIN. SOLDERING PART Au 0.01 μm MIN.
1	HOUSING	LCP	UL94V-0, BLACK

NO.	DISCRIPTION	MATERIAL	FINISH , REMARKS		
15	Z241858 Haji 2024/12/24 S.S	ANGLE ±2° 6 OVER 30 MAX. ±0.3	PROJECTION SERIES No. R1 TITLE NOVASTACK® 35-P PLUG ASSEMBLY SCALE 10:1 UNIT mm I-PEX SIZE A3 SHEET 1/5 REV. 15		
14	Z241236 Haji 2024/09/11 S.S	6 MAX. ±0.2 30 OVER 120 MAX. ±0.5			
13	Z220204 K.W 2022/02/28 Y.H	GENERAL TOLERANCE.			
12	Z190514 R.S 2019/04/12 TAK	DWG. T.Hirakawa DATE 2015/08/20			
11	Z180678 R.H 2018/05/28 TAK	CHK. T.Tagawa			
10	Z171526 Y.B 2017/12/27 TAK	APP. E.Kawabe	DWG. No. 20708		
REV.	ECN	BY	DATE	APP.	

ITEMS	SPECIFICATION
APPLICABLE CONNECTOR PART No.	20709-0**E-01
RATING VOLTAGE	50V AC (r.m.s) / DC
RATING AMPERAGE (FOR SIGNAL CONTACT)	0.3A AC/DC (PER CONTACT PIN), 12.0A AC/DC(TOTAL) 1.0A AC/DC (PER CONTACT OF UP TO 8 PINS)
RATING AMPERAGE (FOR POWER CONTACT)	2.0A AC/DC (PER A CONTACT)/ 4.0A AC/DC(TOTAL)
OPERATING TEMPERATURE	233~358K(-40°C~+85°C)
OPERATING HUMIDITY	85% MAX.(NON-CONDENSING)
CONTACT RESISTANCE (FOR SIGNAL CONTACT)	INITIAL : 30mohm MAX. / AFTER TEST : \triangleleft 20mohm MAX.
CONTACT RESISTANCE (FOR POWER CONTACT)	INITIAL : 30mohm MAX. / AFTER TEST : \triangleleft 20mohm MAX.
INSULATION RESISTANCE	INITIAL : 1,000Mohm MIN. / AFTER TEST : 500Mohm MIN.
DIELECTRIC WITHSTANDING VOLTAGE	AC200V 1min
DURABILITY	20 CYCLES
MATING FORCE (INITIAL)	~28P 2.0 N/Pin MAX. 30P~ 1.0 N/Pin MAX.
UNMATING FORCE (AFTER TEST)	~28P 0.30 N/Pin MIN. 30P~ 0.15 N/Pin MIN.
COPLANARITY	0.08 MAX.
PRODUCT SPECIFICATION	PRS-2334
TEST REPORT	TR-16143
PACKING STANDARD	PST-15076
INSTRUCTION MANUAL	HIM-15014
APPEARANCE CRITERIA No.	QLS-A***

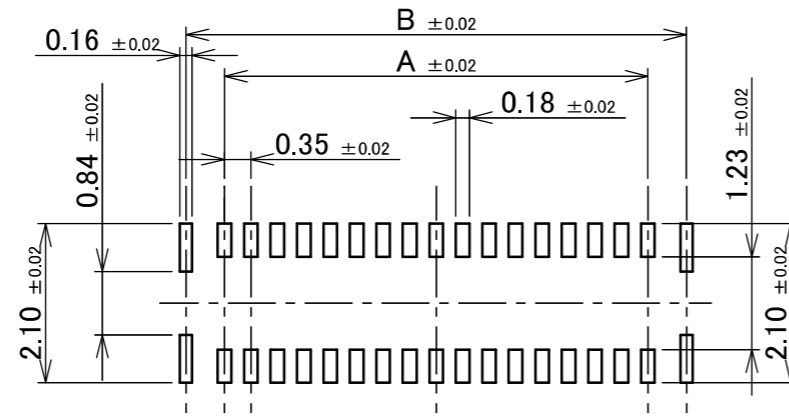
ANGLE	$\pm 2^\circ$	6 OVER 30 MAX.	± 0.3	PROJECTION 	SERIES No. R1	CUSTOMER COPY		
6 MAX.	± 0.2	30 OVER 120 MAX.	± 0.5			TITLE NOVASTACK [®] 35-P PLUG ASSEMBLY	SCALE 	I-PEX
GENERAL TOLERANCE.				DWG. No. 20708	SIZE A3	SHEET 2/5	REV. 15	
DWG.	DATE							
CHK.								
APP.								

PART No.	Pos.	F
20708-010E-01	10	4.10
20708-014E-01	14	4.80
20708-018E-01	18	5.50
20708-020E-01	20	5.85
20708-024E-01	24	6.55
20708-030E-01	30	7.60
20708-034E-01	34	8.30
20708-040E-01	40	9.35
20708-050E-01	50	11.10
20708-060E-01	60	12.85



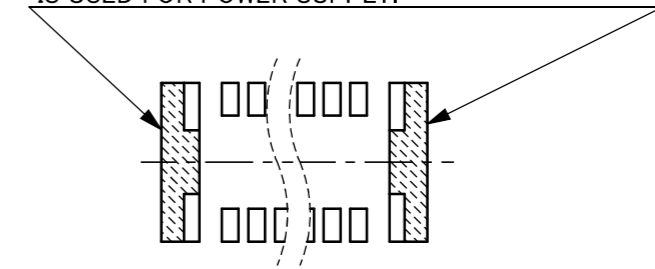
半田上がり防止の為、半田付けをしないで下さい。
 パターンを設けるときは、レジストもしくはカバーレイを設けて下さい。
 MUST BE NOT SOLDERING AREA FOR PREVENT FROM SOLDER WICKING.
 MUST BE COVER LAY OR RESIST COATING ON THE PATTERN.

RECOMMENDED PATTERN LAYOUT

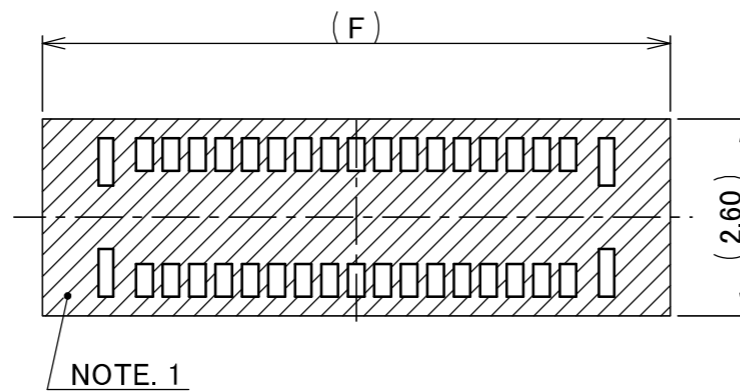


RECOMMENDED METAL MASK LAYOUT
 THICKNESS : 0.10 mm

ホールダウンを電源用としてご使用の場合は、
 両パットを図のように繋げて下さい。
 PAD IS CONNECTED LIKE FIGURE WHEN HOLD DOWN
 IS USED FOR POWER SUPPLY.



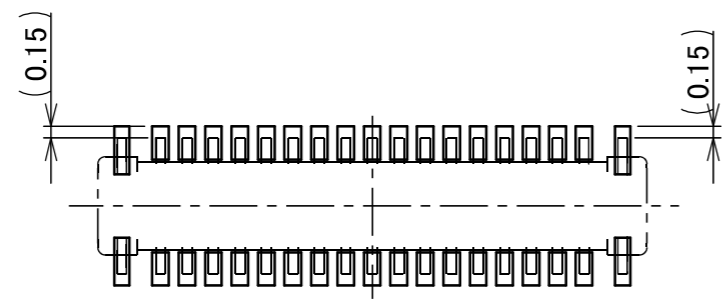
HOLD DOWN PAD LAYOUT
 USED FOR POWER SUPPLY.



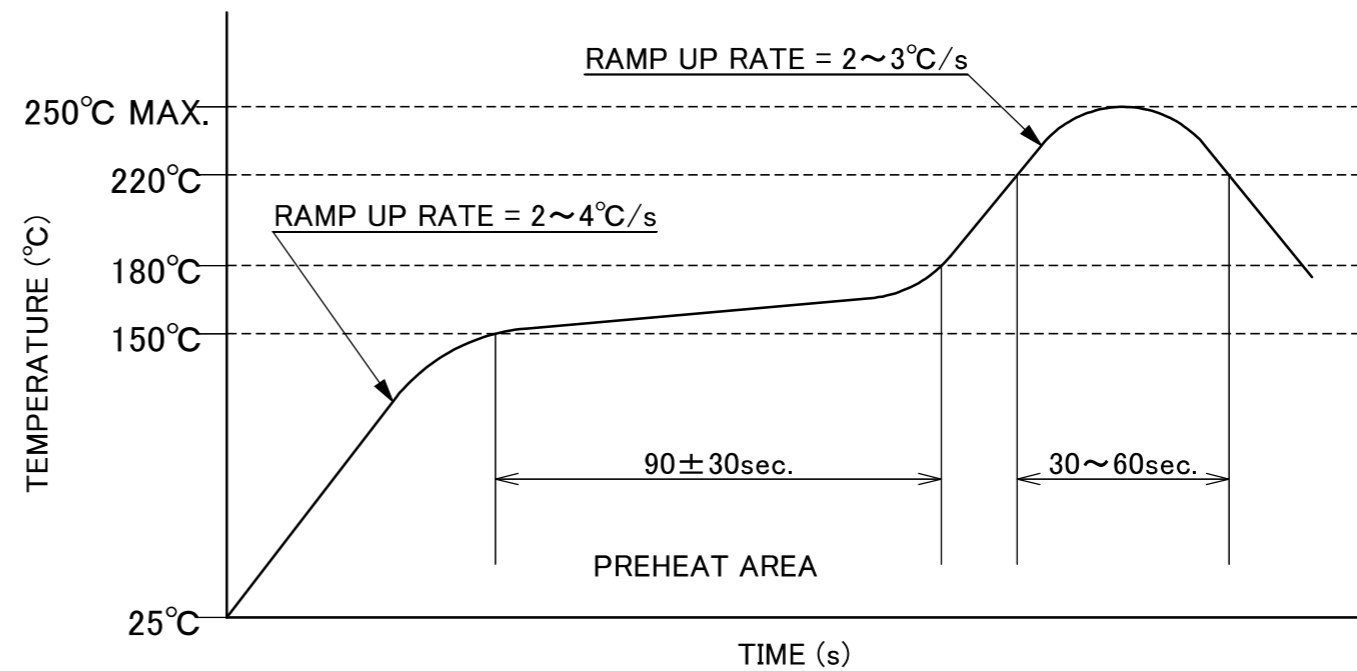
NOTE. 1

NOTES.
 1. THIS AREA CANNOT MOUNT ANOTHER COMPONENTS.

ANGLE	±2°	6 OVER 30 MAX.	±0.3	PROJECTION	SERIES No.	CUSTOMER COPY		
	6 MAX.	±0.2	30 OVER 120 MAX.	±0.5	R1			
GENERAL TOLERANCE.				TITLE	SCALE	I-PEX		
DWG.	DATE			NOVASTACK® 35-P PLUG ASSEMBLY	10:1			
CHK.					UNIT			
APP.					mm			
				DWG. No.	SIZE	SHEET	REV.	
				20708	A3	3/5	15	



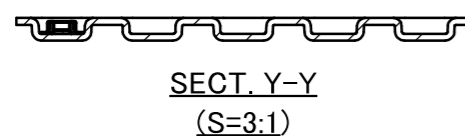
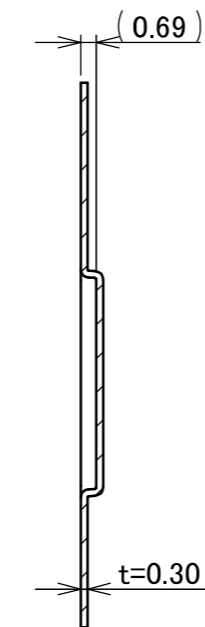
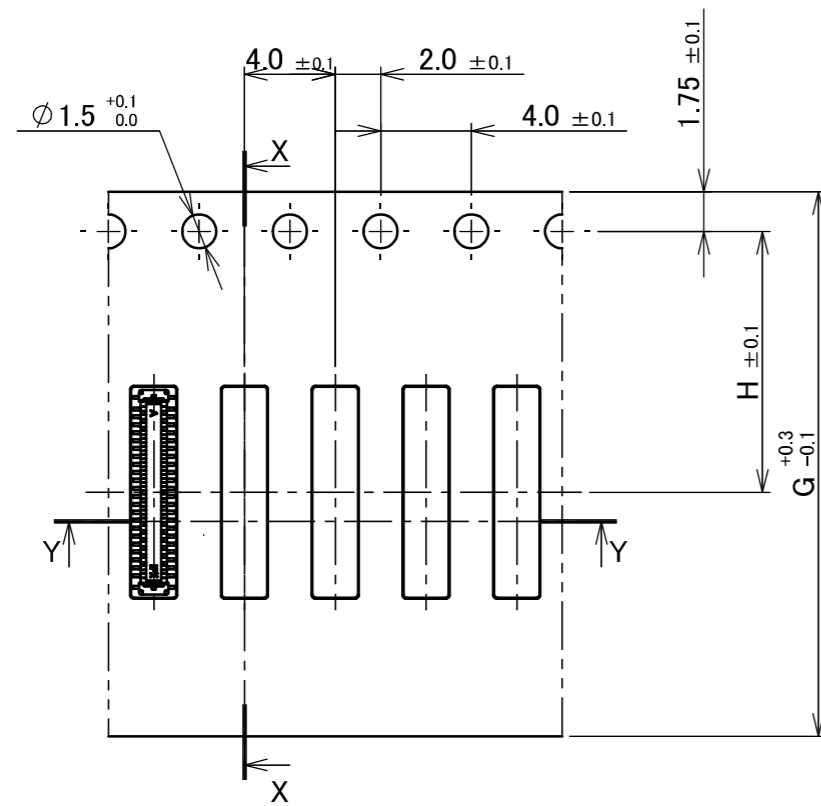
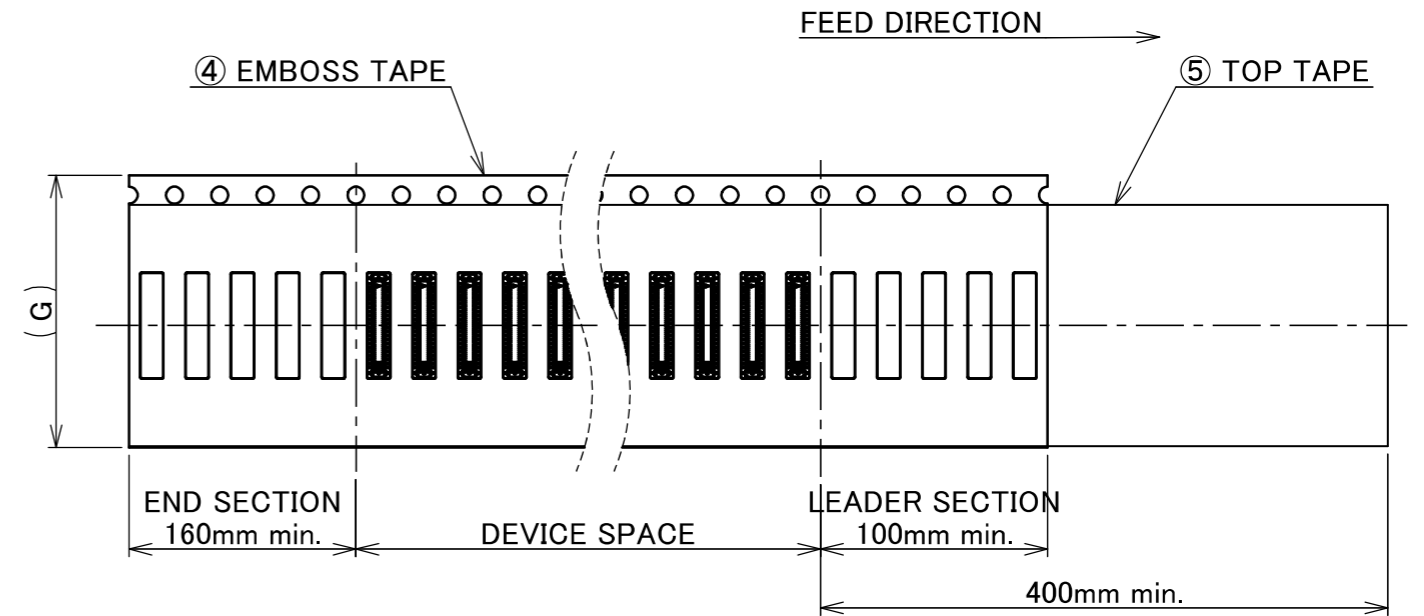
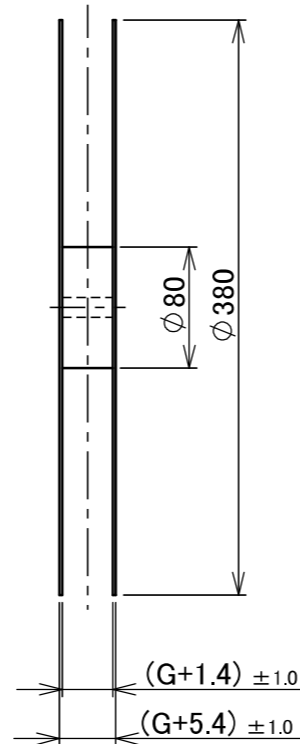
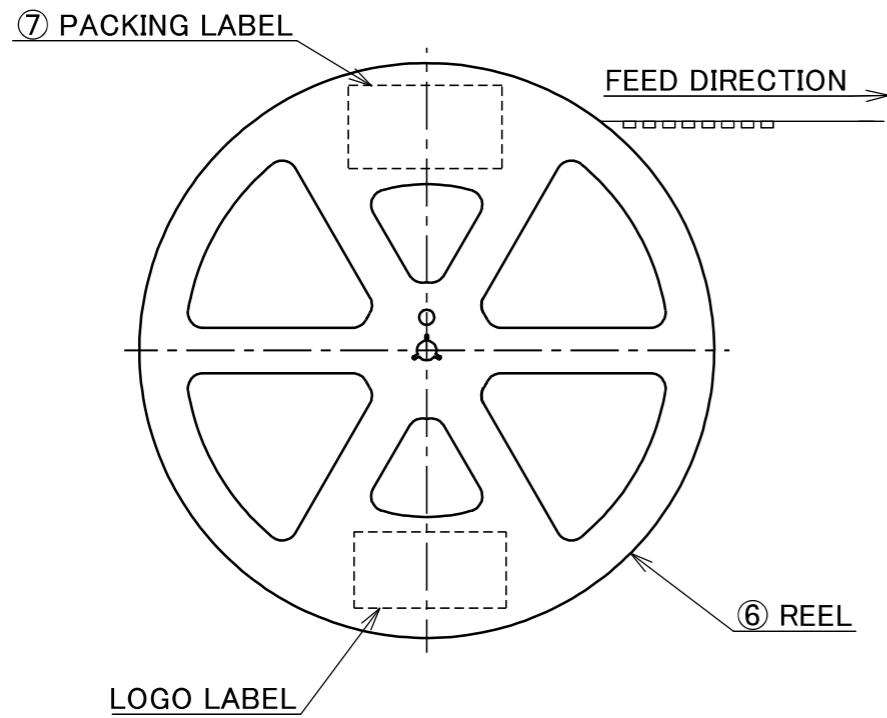
CONNECTOR ON RECOMMENDED FOOTPRINT PATTERN



REFLOW TEMPERATURE PROFILE
 SENJU METAL INDUSTRY CO., LTD. : M705-SHF(Sn96.5 Ag3.0 Cu0.5)

ANGLE	±2°	6 OVER 30 MAX.	±0.3	PROJECTION 	SERIES No. R1	CUSTOMER COPY		
6 MAX.	±0.2	30 OVER 120 MAX.	±0.5					
GENERAL TOLERANCE.				TITLE NOVASTACK® 35-P PLUG ASSEMBLY	SCALE 10:1	UNIT I-PEX		
DWG.	DATE							
CHK.								
APP.								
				DWG. No.	20708	SIZE A3	SHEET 4/5	REV. 15

PART NO.	Pos.	G	H	QTY. PER EMBOSS REEL (PIECES / REEL)	QTY. PER PACKING CARTON (REELS / CARTON)
20708-0**E-01	10~14P	12	5.5	20,000 / REEL	20,000 × 9 REELS = 180,000
	16~38P	16	7.5		20,000 × 7 REELS = 140,000
	40~70P	24	11.5		20,000 × 5 REELS = 100,000



NOTES.

- TAPING SPECIFICATION FOLLOWS JIS C 0806 (IEC 60286-3).
- MAKE EMPTY SECTION OF LEADER AND END ON EACH END OF THE TAPE.
- TOP TAPE SHALL NOT STICK OUT FROM EMBOSS TAPE.
- TOP TAPE SHALL NOT COVER FEED HOLE.

NO.	DISCRIPTION	MATERIAL	FINISH , REMARKS
7	PACKING LABEL	-	-
6	REEL	PS	ANTI-STATIC TYPE BLACK
5	TOP TAPE	PET t=0.062 TRANSPARENCY	ANTI-STATIC TYPE
4	EMBOSS TAPE	TRANSPARENCY	ANTI-STATIC TYPE

ANGLE	$\pm 2^\circ$	6 OVER 30 MAX.	± 0.3	PROJECTION 	SERIES No. R1	CUSTOMER COPY
6 MAX.	± 0.2	30 OVER 120 MAX.	± 0.5			
GENERAL TOLERANCE.				TITLE	SCALE	I-PEX
DWG.	DATE	NOVASTACK® 35-P PLUG ASSEMBLY		1:X		
CHK.				UNIT		
APP.		DWG. No. 20708		mm		
				SIZE	SHEET	REV.
				A3	5/5	15