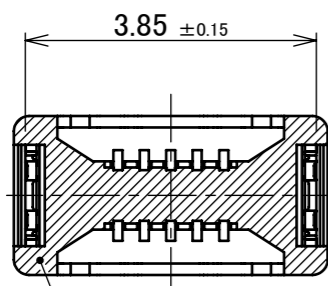
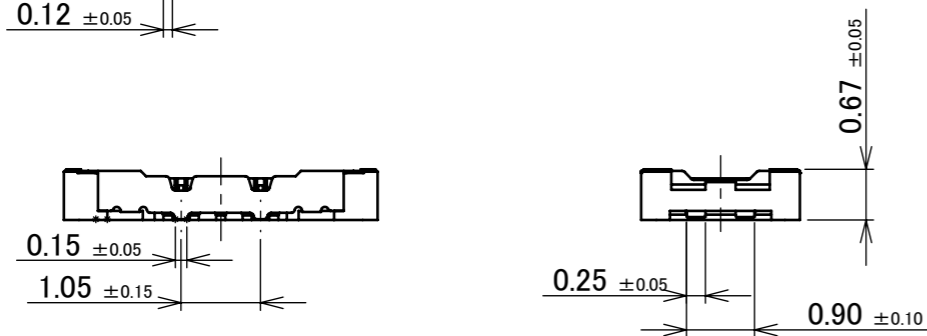
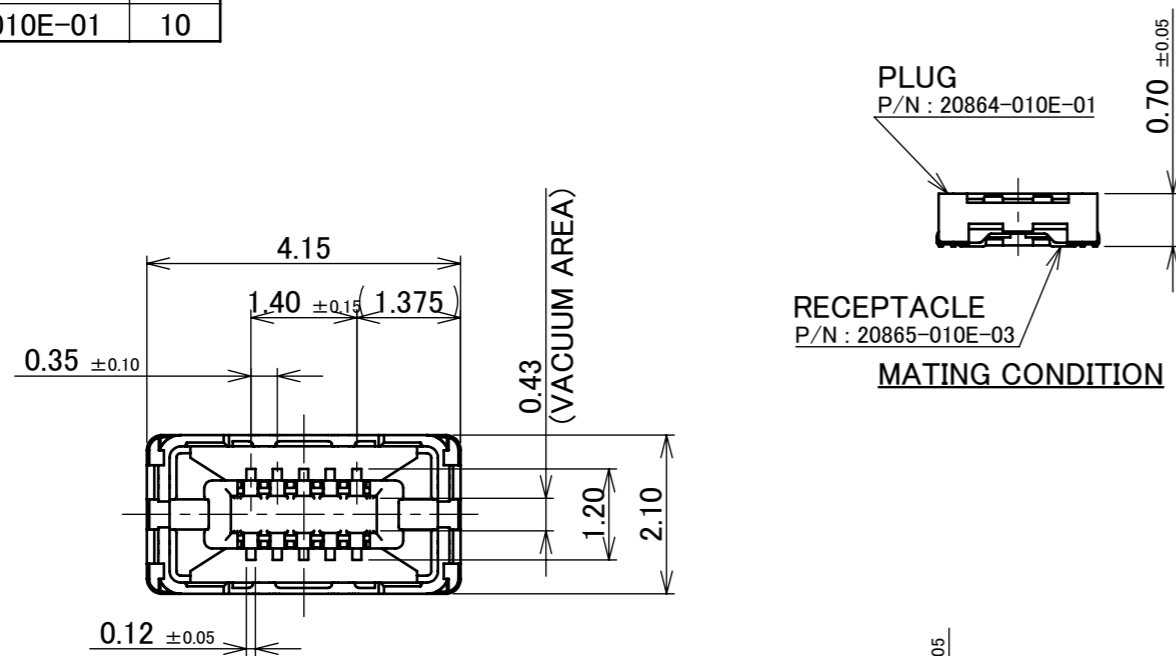
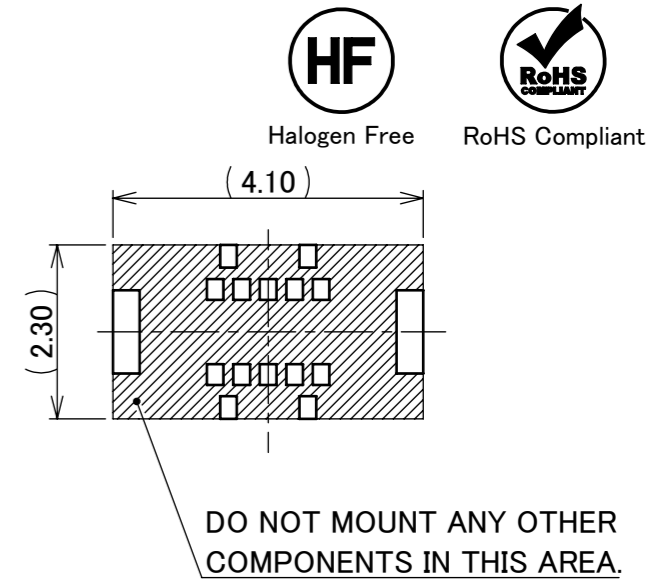
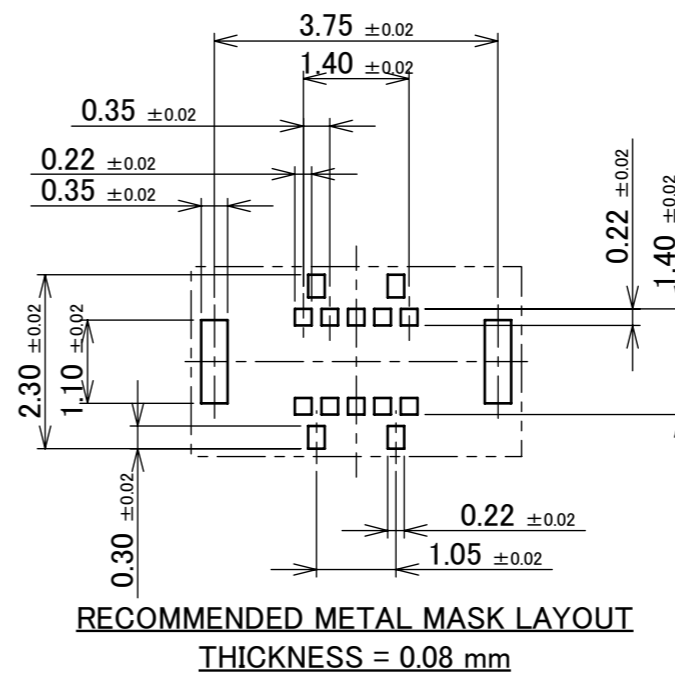
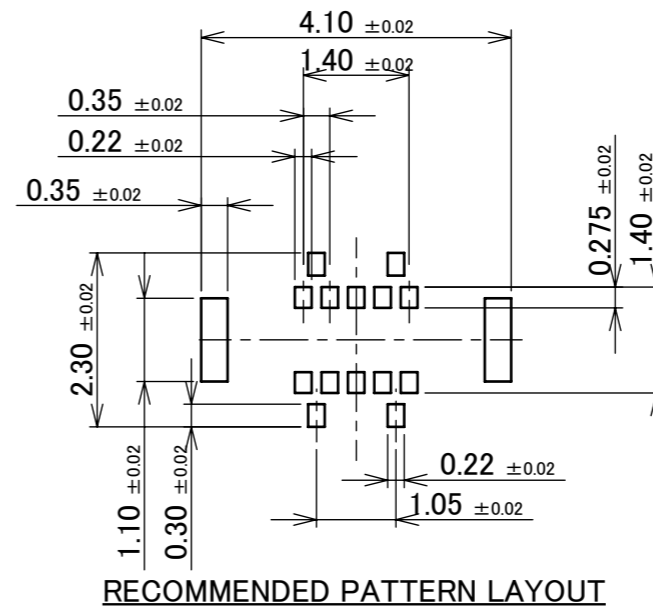
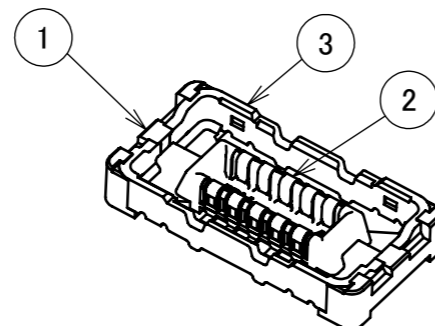


PART NO.	Pos.
20864-010E-01	10



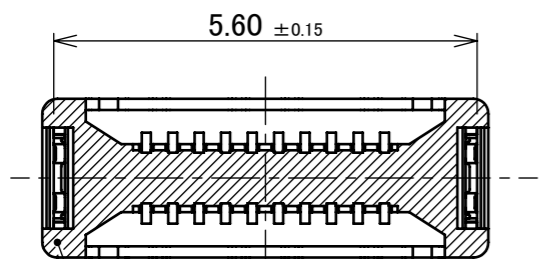
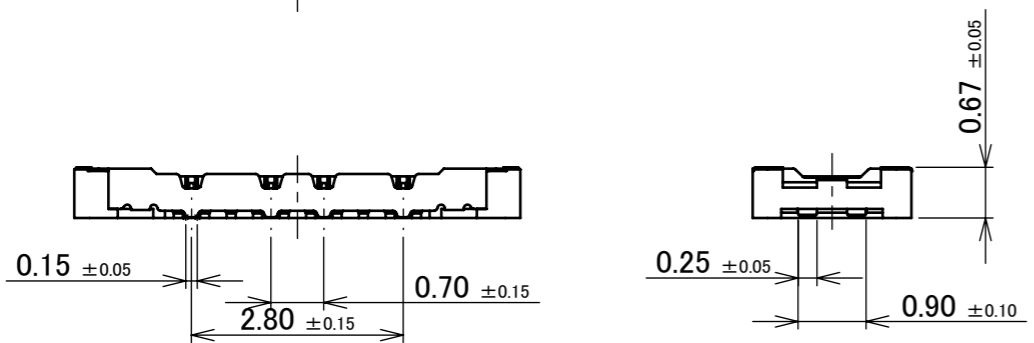
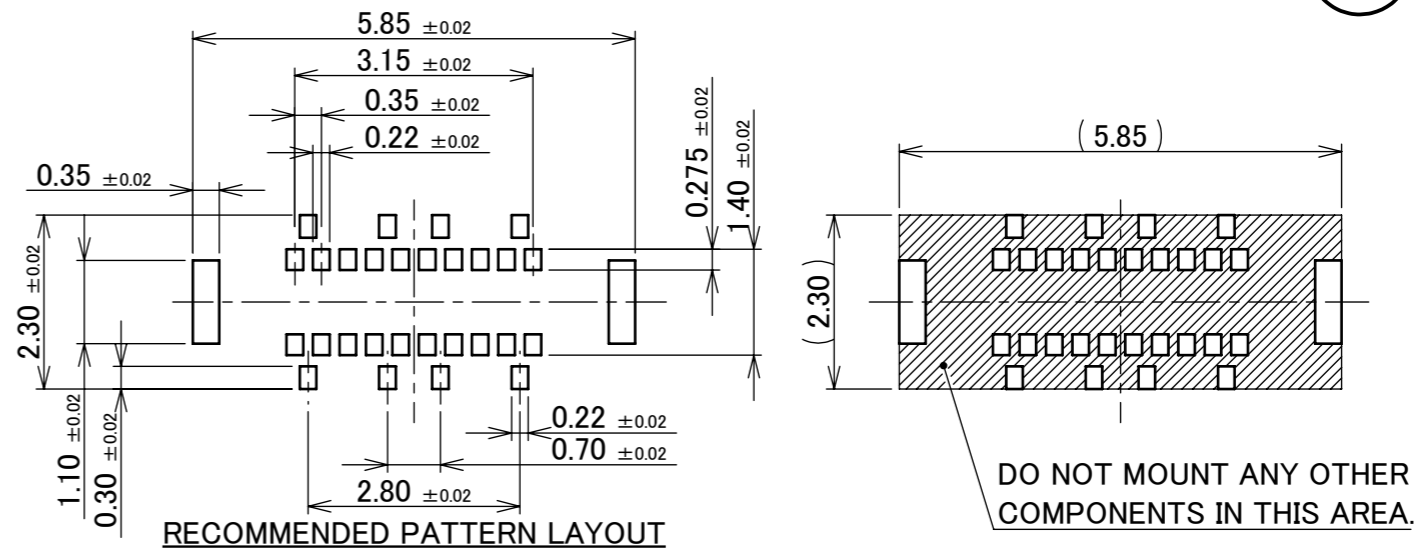
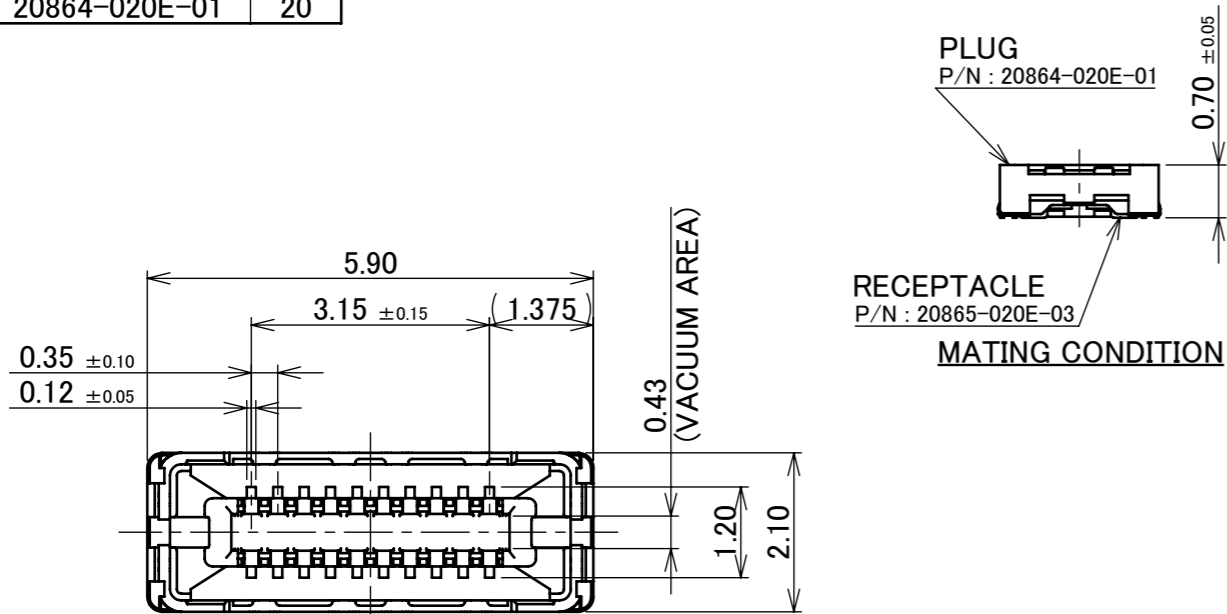
There is a possibility of dent shape in the bottom surface of HOUSING.



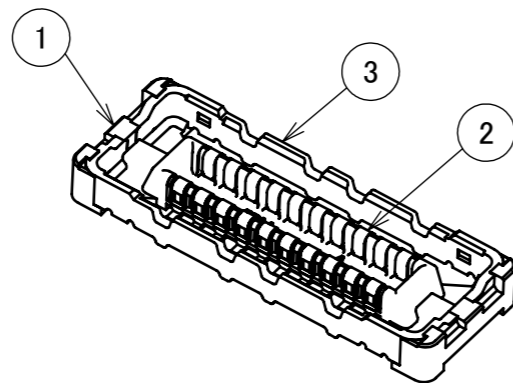
3	SHELL	COPPER ALLOY	SOLDERING PART Au 0.01 μm MIN. OVER Ni 1.27 μm MIN.	
2	CONTACT	COPPER ALLOY	CONTACT PART Au 0.05 μm MIN. OVER Ni 1.27 μm MIN. SOLDERING PART Au 0.01 μm MIN. OVER Ni 1.27 μm MIN.	
1	HOUSING	LCP	UL94V-0, BLACK	
NO.	DISCRIPTION	MATERIAL	FINISH, REMARKS	
9	Z220201	TSU	2022/02/25	Y.H
8	Z201019	M.H	Oct./02/'20	Y.H
7	Z191631	Tad	Dec./16/'19	Y.S
6	Z191609	Tad	Dec./10/'19	Y.S
5	Z190899	Tad	Jul./09/'19	Y.S
4	Z190692	Tad	May/24/'19	Y.S
REV.	ECN	BY	DATE	APP.
REVISION RECORD				
		K.Yotsutani		2018/01/12
PROJECTION		SERIES No.		CUSTOMER COPY
⊕		R2		
TITLE		SCALE		I-PEX
NOVASTACK® 35-HDN PLUG ASS'Y		10:1		
DWG. No.		UNIT		
20864		mm		
SIZE		SHEET		REV.
A3		1/6		9

Recommended P/N 20864-020E-01

PART NO.	Pos.
20864-020E-01	20



There is a possibility of dent shape in the bottom surface of HOUSING.

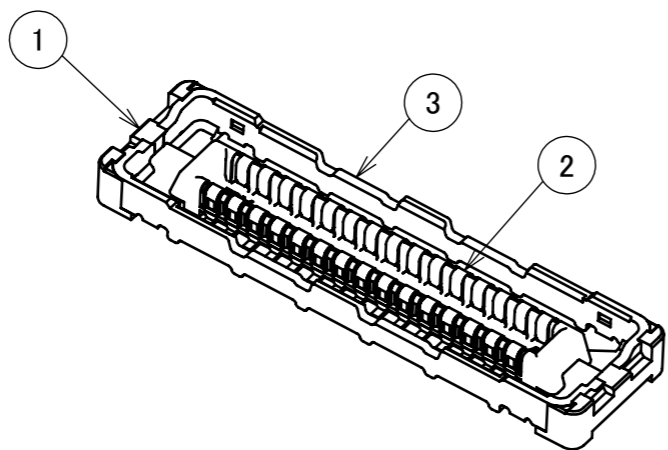
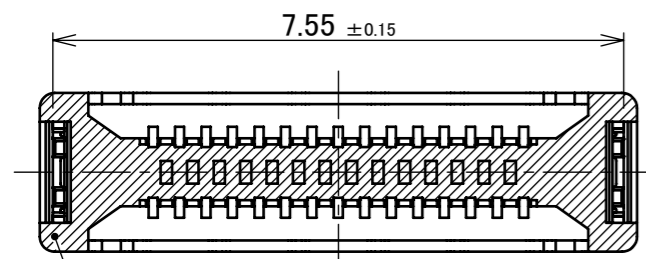
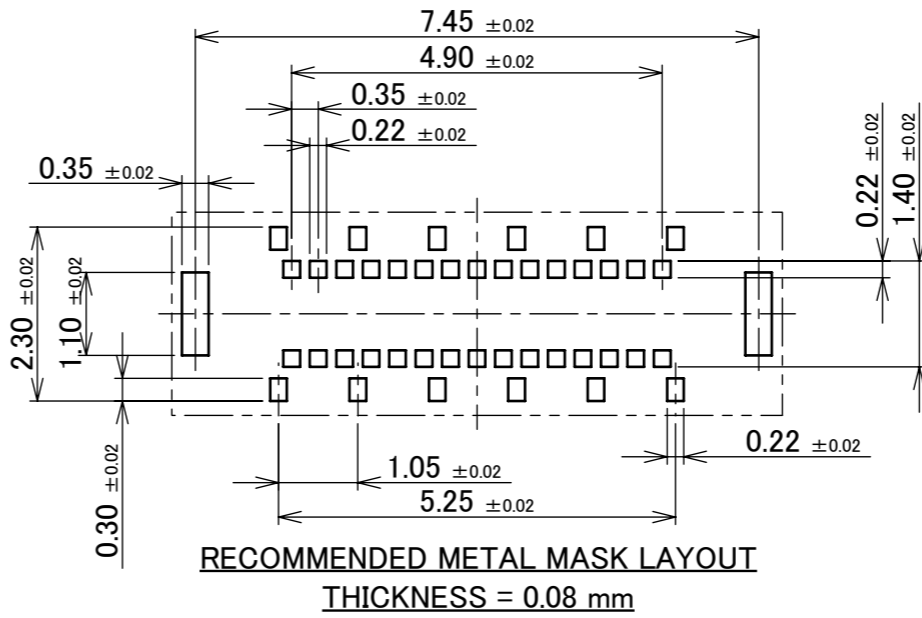
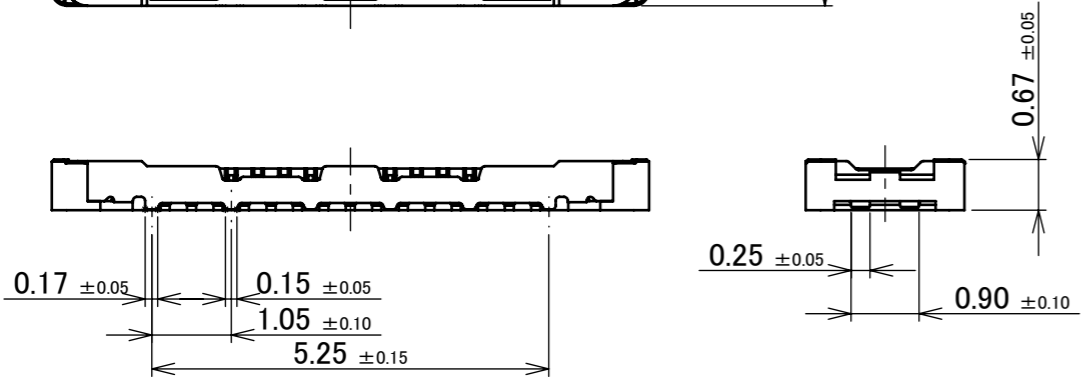
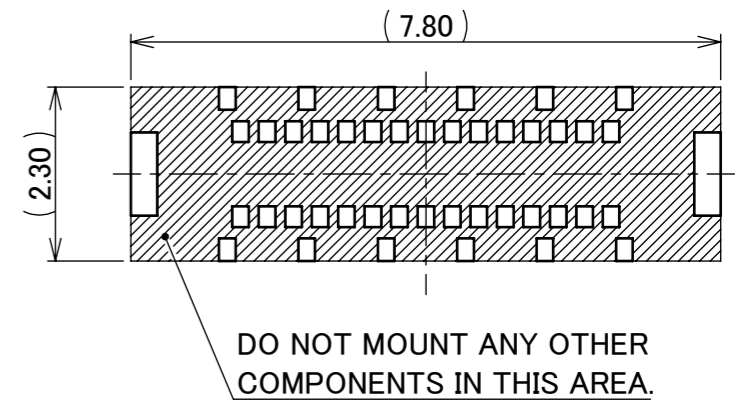
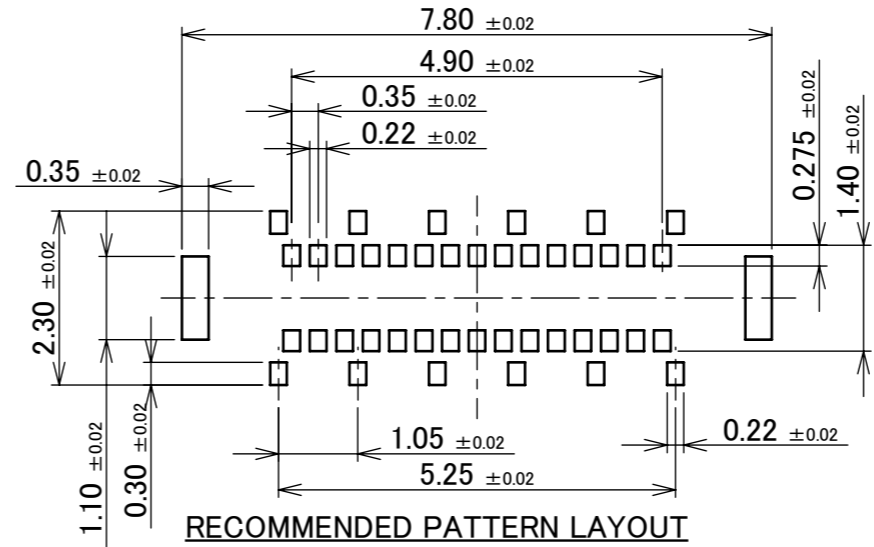
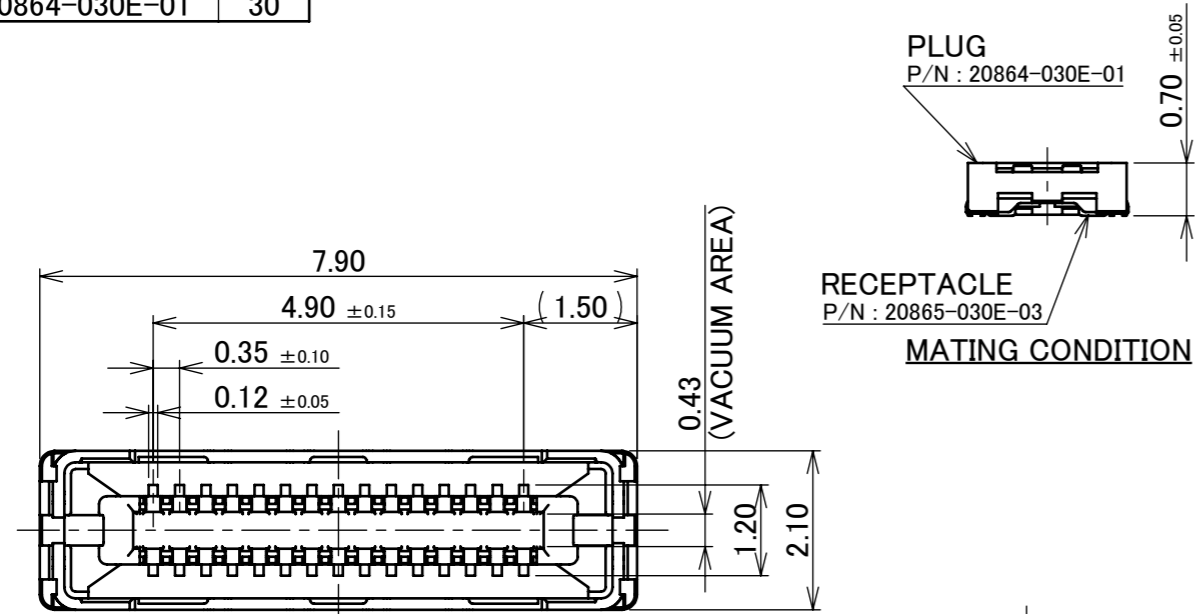
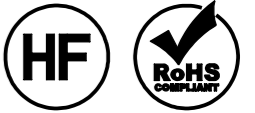


3	SHELL	COPPER ALLOY	SOLDERING PART Au 0.01 μm MIN. OVER Ni 1.27 μm MIN.
2	CONTACT	COPPER ALLOY	CONTACT PART Au 0.05 μm MIN. OVER Ni 1.27 μm MIN. SOLDERING PART Au 0.01 μm MIN. OVER Ni 1.27 μm MIN.
1	HOUSING	LCP	UL94V-0, BLACK
NO.	DISCRIPTION	MATERIAL	FINISH, REMARKS

ANGLE	±2°	6 OVER 30 MAX.	±0.3	PROJECTION ⊕	SERIES No. R2	CUSTOMER COPY		
	6 MAX.	±0.2	30 OVER 120 MAX.				±0.5	
GENERAL TOLERANCE.				TITLE NOVASTACK® 35-HDN PLUG ASS'Y	SCALE 10:1	UNIT mm		
DWG.	DATE							
CHK.								
APP.								
				DWG. No.	20864	SIZE A3	SHEET 2/6	REV. 9

Recommended P/N 20864-030E-01

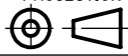
PART NO.	Pos.
20864-030E-01	30

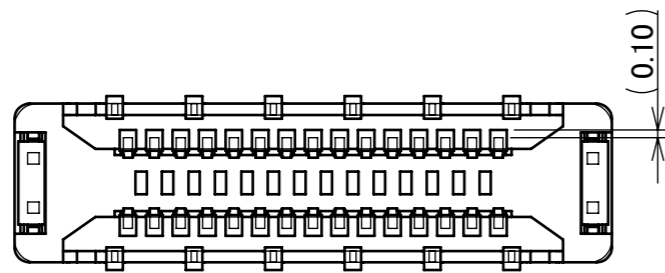


3	SHELL	COPPER ALLOY	SOLDERING PART Au 0.01 μm MIN. OVER Ni 1.27 μm MIN.
2	CONTACT	COPPER ALLOY	CONTACT PART Au 0.05 μm MIN. OVER Ni 1.27 μm MIN. SOLDERING PART Au 0.01 μm MIN. OVER Ni 1.27 μm MIN.
1	HOUSING	LCP	UL94V-0, BLACK
NO.	DISCRIPTION	MATERIAL	FINISH, REMARKS

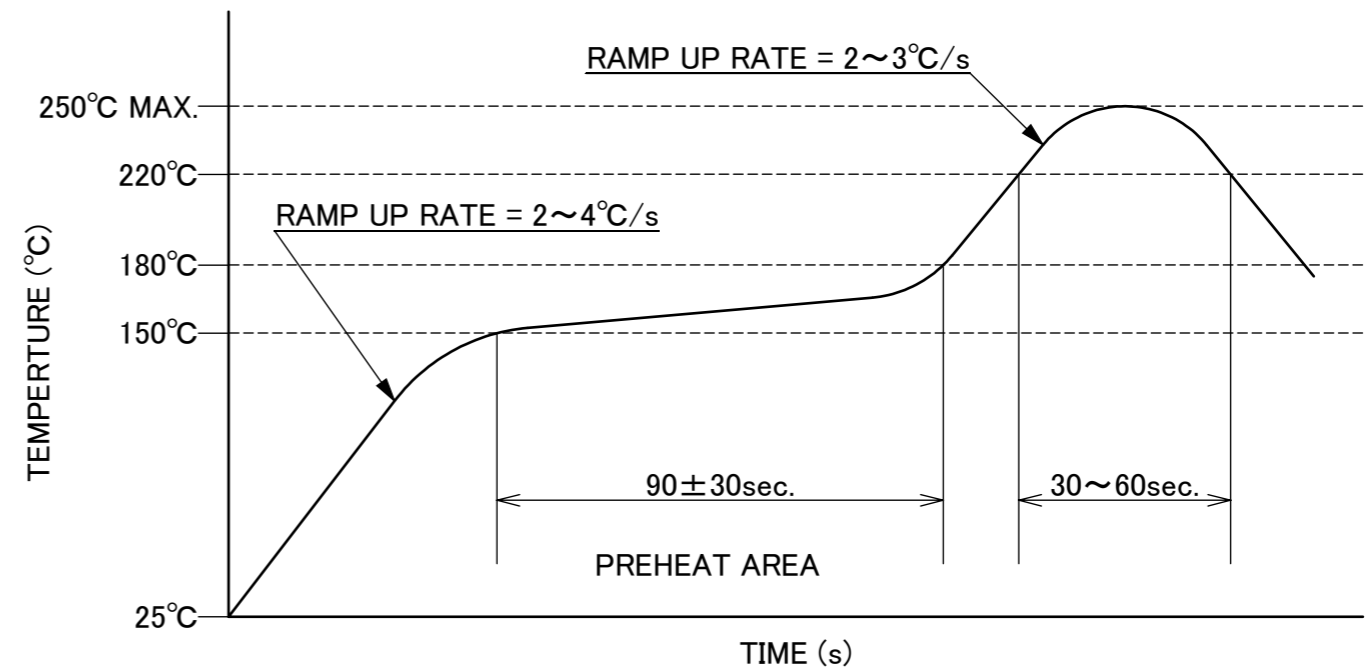
ANGLE	±2°	6 OVER 30 MAX.	±0.3	PROJECTION ⊕	SERIES No. R2	CUSTOMER COPY
	6 MAX.	±0.2	30 OVER 120 MAX.			
GENERAL TOLERANCE.				TITLE NOVASTACK® 35-HDN PLUG ASS'Y		SCALE 10:1
DWG.	DATE			DWG. No. 20864		UNIT mm
CHK.						I-PEX
APP.						
				SIZE A3		SHEET 3/6
						REV. 9

ITEMS	SPECIFICATION
APPLICABLE CONNECTOR PART No.	20865-0**E-**
RATING VOLTAGE	60V AC(r.m.s) / DC (PER CONTACT PIN)
RATING AMPERAGE (FOR SIGNAL CONTACT)	10P:1.0 A MAX. AC/DC x PIN COUNTS = 10.0 A (TOTAL) 12P AND OVER : 12.0 A AC/DC (TOTAL)
OPERATING TEMPERATURE	233~358K(-40°C~85°C)
OPERATING HUMIDITY	85% MAX.(NON-CONDENDING)
CONTACT RESISTANCE (FOR SIGNAL CONTACT)	INITIAL : 40mohm MAX. / AFTER TEST : \triangleleft 40mohm MAX.
CONTACT RESISTANCE (FOR GROUND)	INITIAL : 20mohm MAX. / AFTER TEST : \triangleleft 20mohm MAX.
INSULATION RESISTANCE	INITIAL : 1,000Mohm MIN. / AFTER TEST : 500Mohm MIN.
DIELECTRIC WITHSTANDING VOLTAGE	AC250V 1min
DURABILITY	10 CYCLES
MATING FORCE (INITIAL / AFTER TEST)	INITIAL 2.0N/Pin MAX.
UNMATING FORCE (INITIAL / AFTER TEST)	10 CYCLES 0.15N/Pin MIN.
COPLANARITY	0.08 MAX
PRODUCT SPECIFICATION	PRS-2607
TEST REPORT	TR-19055
PACKING STANDARD	PST-18022
INSTRUCTION MANUAL	HIM-18019
APPEARANCE CRITERIA No.	QLS-A***

ANGLE	$\pm 2^\circ$	6 OVER 30 MAX.	± 0.3	PROJECTION 	SERIES No. R2	CUSTOMER COPY		
6 MAX.	± 0.2	30 OVER 120 MAX.	± 0.5					
GENERAL TOLERANCE.				TITLE NOVASTACK® 35-HDN PLUG ASS'Y	SCALE	I-PEX		
DWG.	DATE							
CHK.								
APP.								
				DWG. No.	20864	SIZE A3	SHEET 4/6	REV. 9



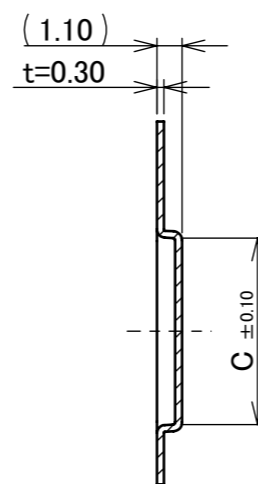
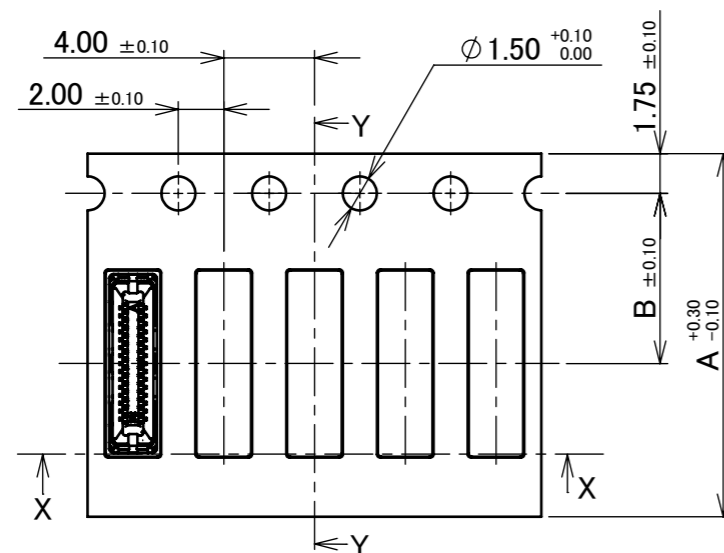
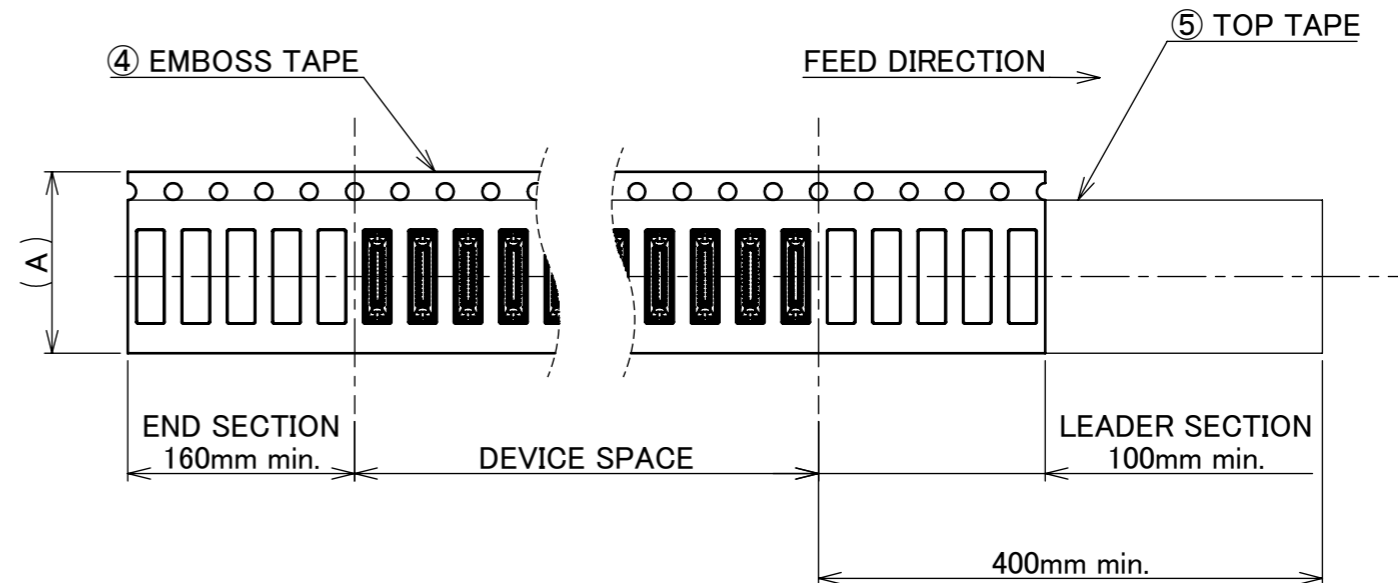
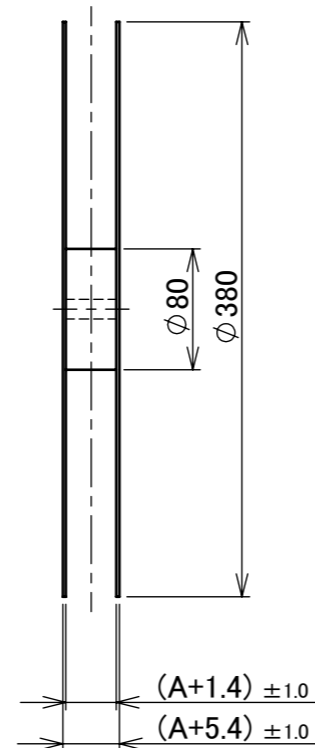
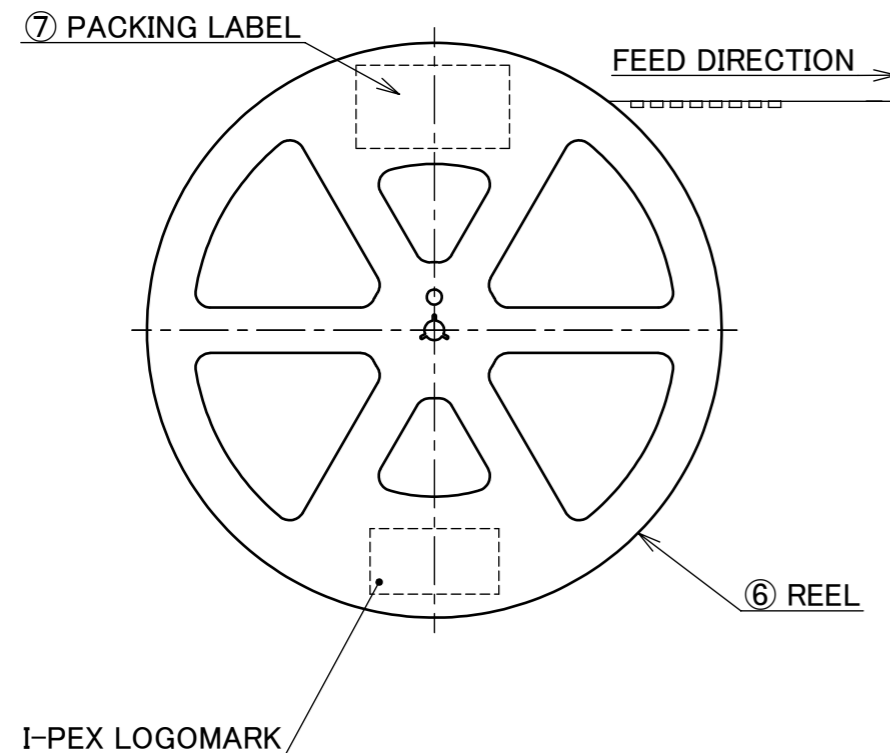
CONNECTOR ON RECOMMENDED FOOTPRINT PATTERN



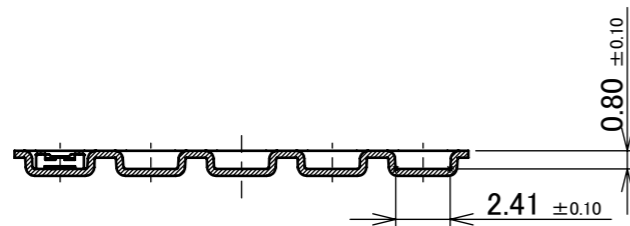
REFLOW TEMPERATURE PROFILE
 SENJU METAL INDUSTRY CO., LTD. : M705-SHF(Sn96.5 Ag3.0 Cu0.5)

ANGLE	±2°	6 OVER 30 MAX.	±0.3	PROJECTION ⊕	SERIES No. R2	CUSTOMER COPY			
6 MAX.	±0.2	30 OVER 120 MAX.	±0.5						
GENERAL TOLERANCE.				TITLE		SCALE	I-PEX		
DWG.	DATE			NOVASTACK® 35-HDN PLUG ASS'Y		10:1			
CHK.						UNIT			
APP.				DWG. No.		mm			
				20864		SIZE	SHEET	REV.	
						A3	5/6	9	

PART NO.	Pos.	A	B	C	QTY. PER EMBOSS REEL (PIECES / REEL)	QTY. PER PACKING CARTON (REELS / CARTON)
20864-010E-01	10	12.0	5.50	4.46	20,000 / REEL	20,000 × 9 REELS = 180,000
20864-020E-01	20	16.0	7.50	6.21		20,000 × 7 REELS = 140,000
20864-030E-01	30	16.0	7.50	8.21		



SECT. Y-Y
S = 3 : 1



SECT. X-X
S = 3 : 1

NOTES.

- TAPING SPECIFICATION FOLLOWS JIS C 0806 (IEC 60286-3).
- MAKE EMPTY SECTION OF LEADER AND END ON EACH END OF THE TAPE.
- TOP TAPE SHALL NOT STICK OUT FROM EMBOSS TAPE.
- TOP TAPE SHALL NOT COVER FEED HOLE.

NO.	DISCRIPTION	MATERIAL	FINISH , REMARKS
7	PACKING LABEL	-	-
6	REEL	PS	ANTI-STATIC TYPE BLACK
5	TOP TAPE	PET t=0.062 TRANSPARENCY	ANTI-STATIC TYPE
4	EMBOSS TAPE	PS t=0.3 TRANSPARENCY	ANTI-STATIC TYPE

ANGLE	±2°	6 OVER 30 MAX.	±0.3	PROJECTION	SERIES No.	CUSTOMER COPY			
6 MAX.	±0.2	30 OVER 120 MAX.	±0.5		R2				
GENERAL TOLERANCE.				TITLE	NOVASTACK® 35-HDN		SCALE		
DWG.	DATE			PLUG ASS'Y		1:X			
CHK.						UNIT			
APP.				DWG. No.	20864	mm	SIZE	SHEET	REV.
						A3	6/6	9	