

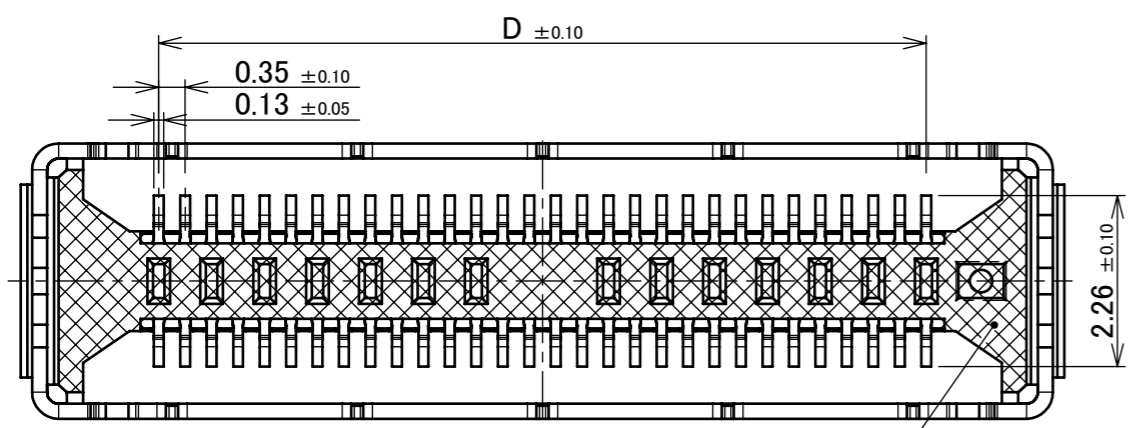
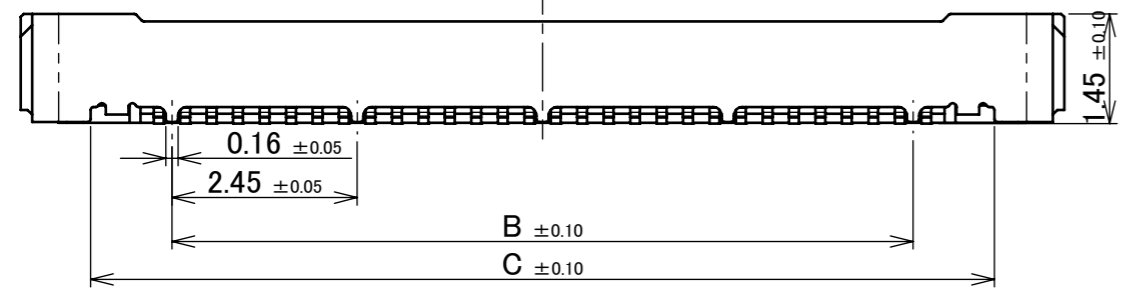
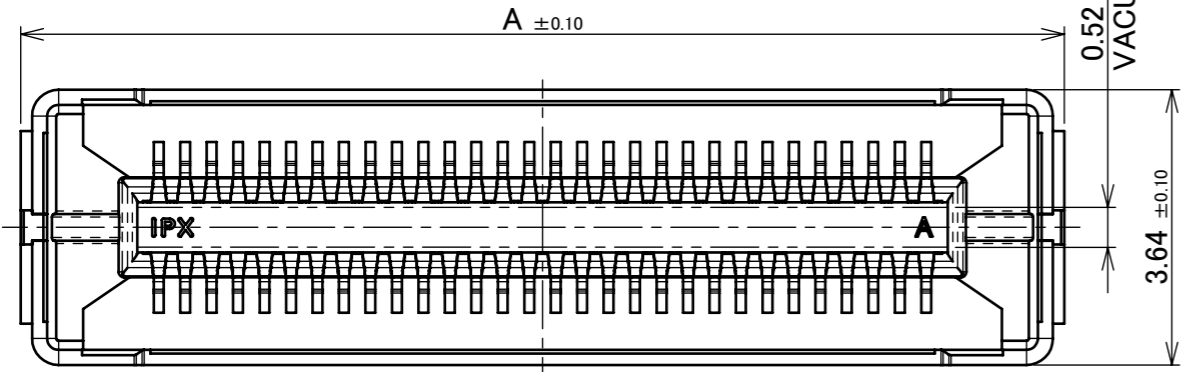
PART No.	Pos.	A	B	C	D	E
21003-060E	60	13.80	9.80	11.95	10.15	13.70



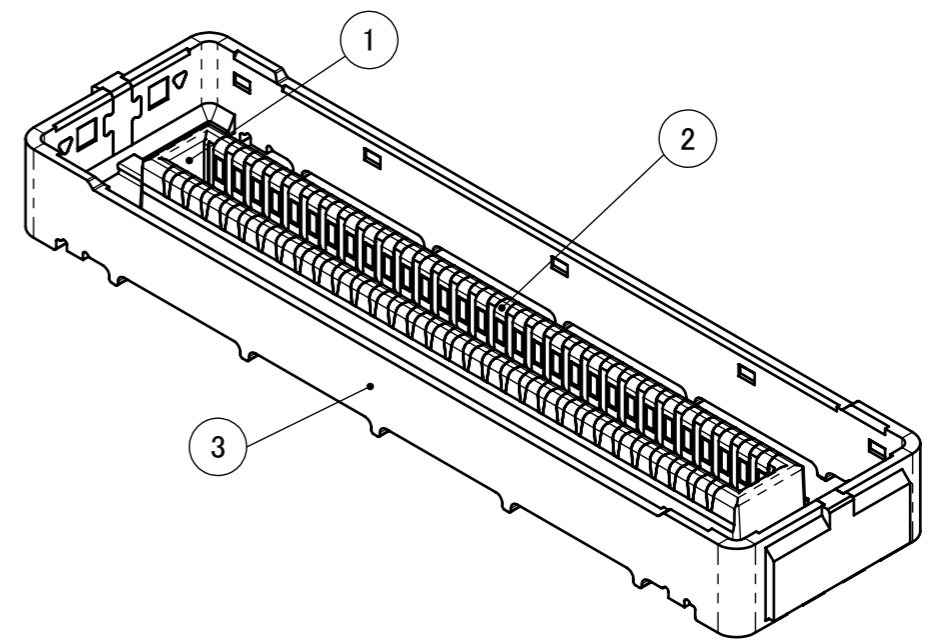
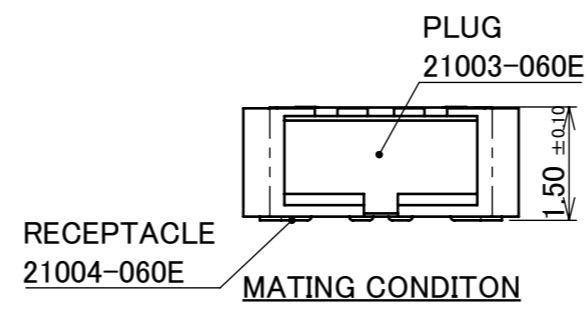
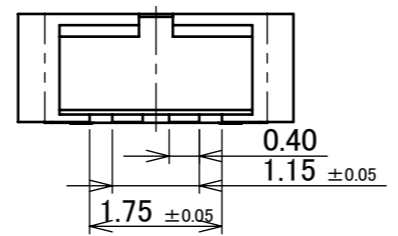
Halogen Free



RoHS Compliant



THERE IS A POSSIBILITY OF DENT SHAPE IN THE BOTTOM SURFACE OF HOUSING.



3	SHELL	CORSON ALLOY	ALL OVER Ni 1.27 μm MIN. Au 0.01 μm MIN.		
2	CONTACT	CORSON ALLOY	CONTACT AREA: Au 0.13 μm MIN. OVER Ni 1.27 μm MIN. SOLDERING AREA: Au 0.02 μm MIN. OVER Ni 1.27 μm MIN.		
1	HOUSING	LCP	UL94V-0 BLACK		
NO.	DESCRIPTION	MATERIAL	FINISH, REMAKS		
			ANGLE	±2°	6 OVER 30 MAX. ±0.3
				6 MAX. ±0.2	30 OVER 120 MAX. ±0.5
			GENERAL TOLERANCE.		PROJECTION
			DWG.	DATE	SERIES No.
			M.Hidaka	2022/07/06	R4
			CHK.	TITLE	
			S.Suzuki	NOVASTACK® 35-HDH PLUG ASSEMBLY	
0	Z220773	M.H	2022/07/06		SCALE
REV.	ECN	BY	DATE	APP.	10:1
					UNIT
					mm
					SIZE
					A3
					SHEET
					1/5
					REV.
					0
REVISION RECORD			APP.	DWG. No.	
			Y.Hashimoto	21003	

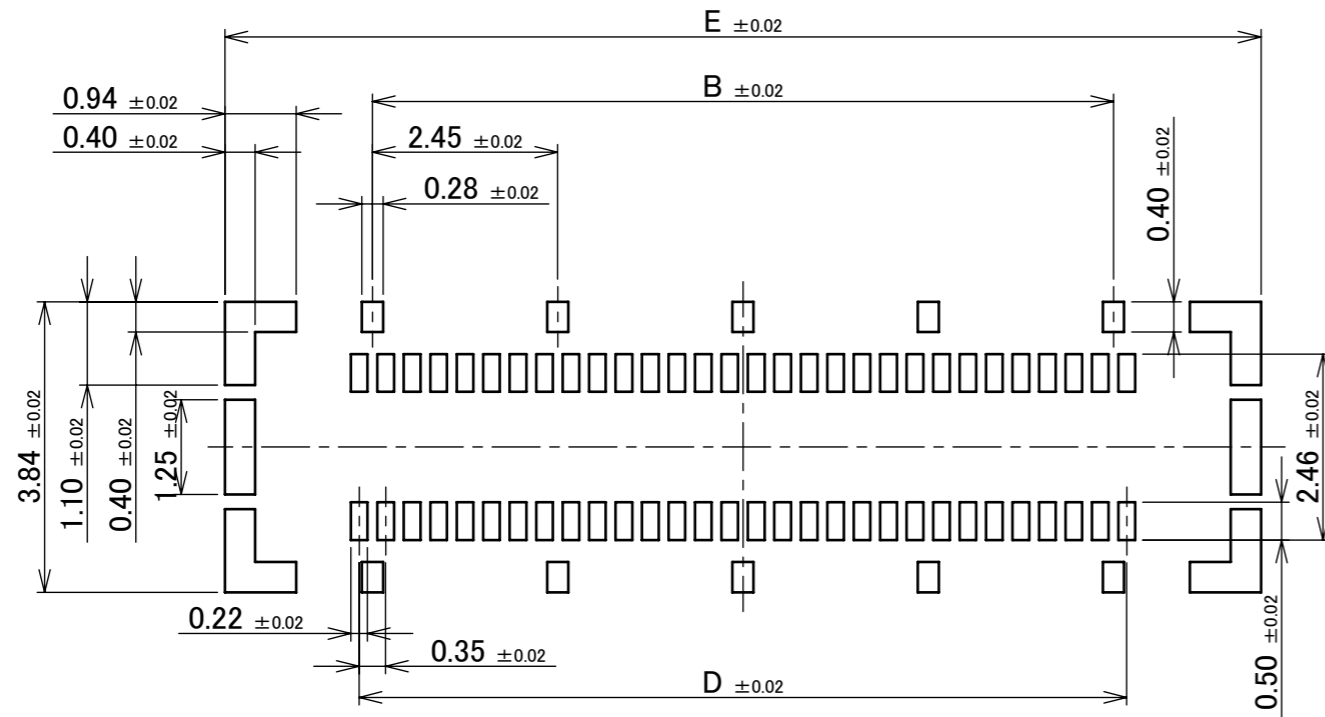
Confidential C

I-PEX Inc.

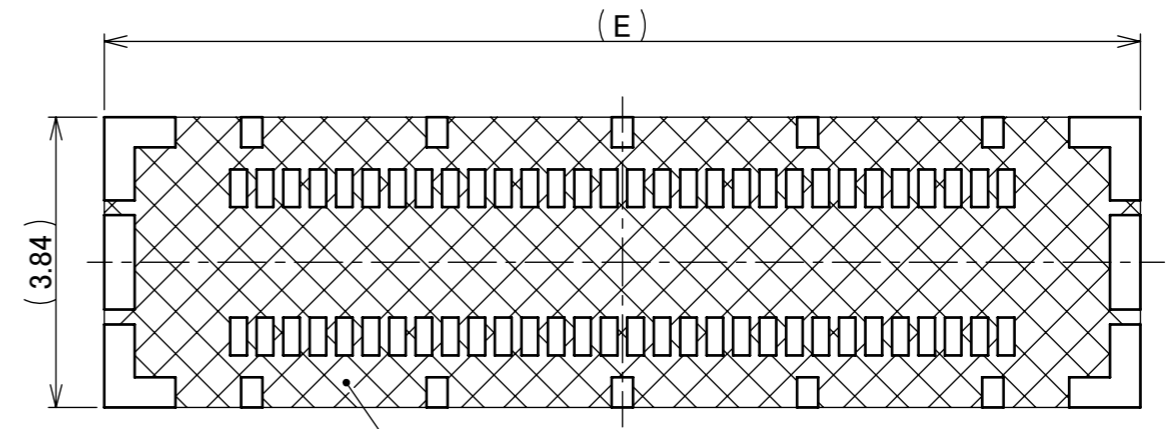
QKE-DFE06-02 REV.12

ITEMS	SPECIFICATION
APPLICABLE CONNECTOR PART No.	21004-060E
RATING VOLTAGE	50V AC (PER CONTACT PIN)
RATING AMPERAGE (FOR SIGNAL CONTACT)	0.5A AC/DC (PER CONTACT PIN)/ 12.0A AC/DC(TOTAL)
OPERATING TEMPERATURE	233~358K(-40°C~+85°C) (CONTANING TEMPERATURE RISE BY CURRENT)
OPERATING HUMIDITY	85% MAX.(NON-CONDENSING)
CONTACT RESISTANCE (FOR SIGNAL CONTACT)	INITIAL : 50mohm MAX. / AFTER TEST : \triangle 50mohm MAX.
INSULATION RESISTANCE	INITIAL : 1000Mohm MIN. / AFTER TEST : 1000Mohm MIN.
DIELECTRIC WITHSTANDING VOLTAGE	AC200V 1min
DURABILITY	20 CYCLES
MATING FORCE (INITIAL / AFTER TEST)	INITIAL 60N MAX.
UNMATING FORCE (INITIAL / AFTER TEST)	20 CYCLES 6.0N MIN.
COPLANARITY	0.10mm MAX.
PRODUCT SPECIFICATION	PRS-2785
TEST REPORT	TR-22021
PACKING STANDARD	PST-21086
INSTRUCTION MANUAL	HIM-21015
APPEARANCE CRITERIA No.	QLS-A***

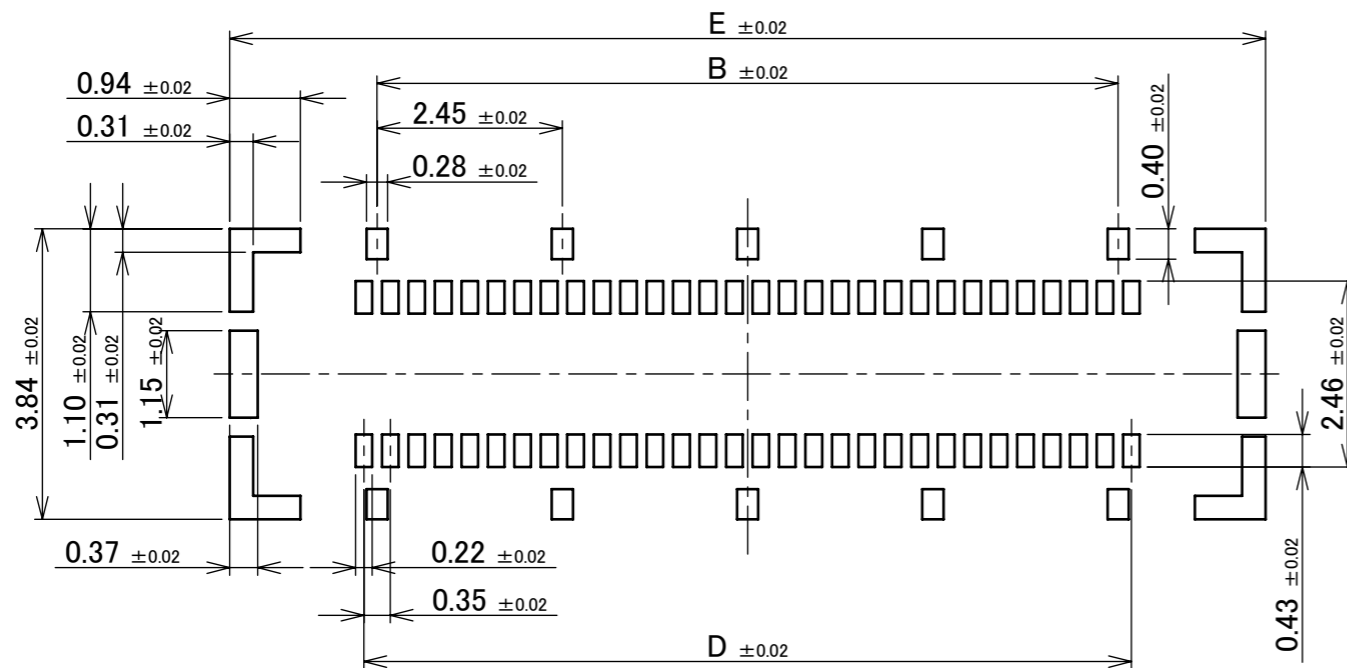
ANGLE	$\pm 2^\circ$	6 OVER 30 MAX.	± 0.3	PROJECTION 	SERIES No. R4	CUSTOMER COPY		
6 MAX.	± 0.2	30 OVER 120 MAX.	± 0.5					
GENERAL TOLERANCE.				TITLE NOVASTACK® 35-HDH PLUG ASSEMBLY	SCALE	I-PEX		
DWG.	DATE							
CHK.								
APP.								
				DWG. No.	21003	SIZE A3	SHEET 2/5	REV. 0



RECOMMENDED PATTERN LAYOUT

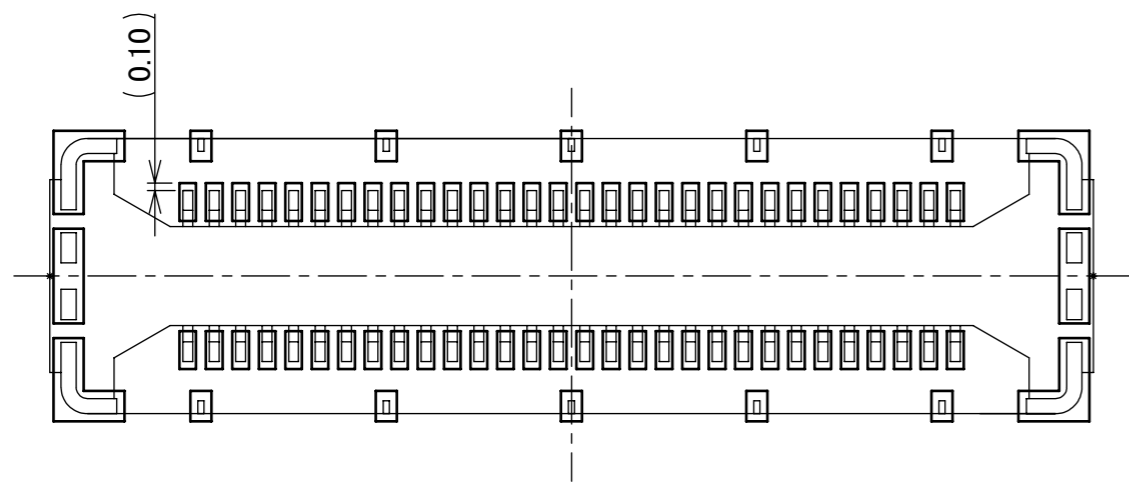


DO NOT MOUNT ANY OTHER COMPONENTS IN THIS AREA

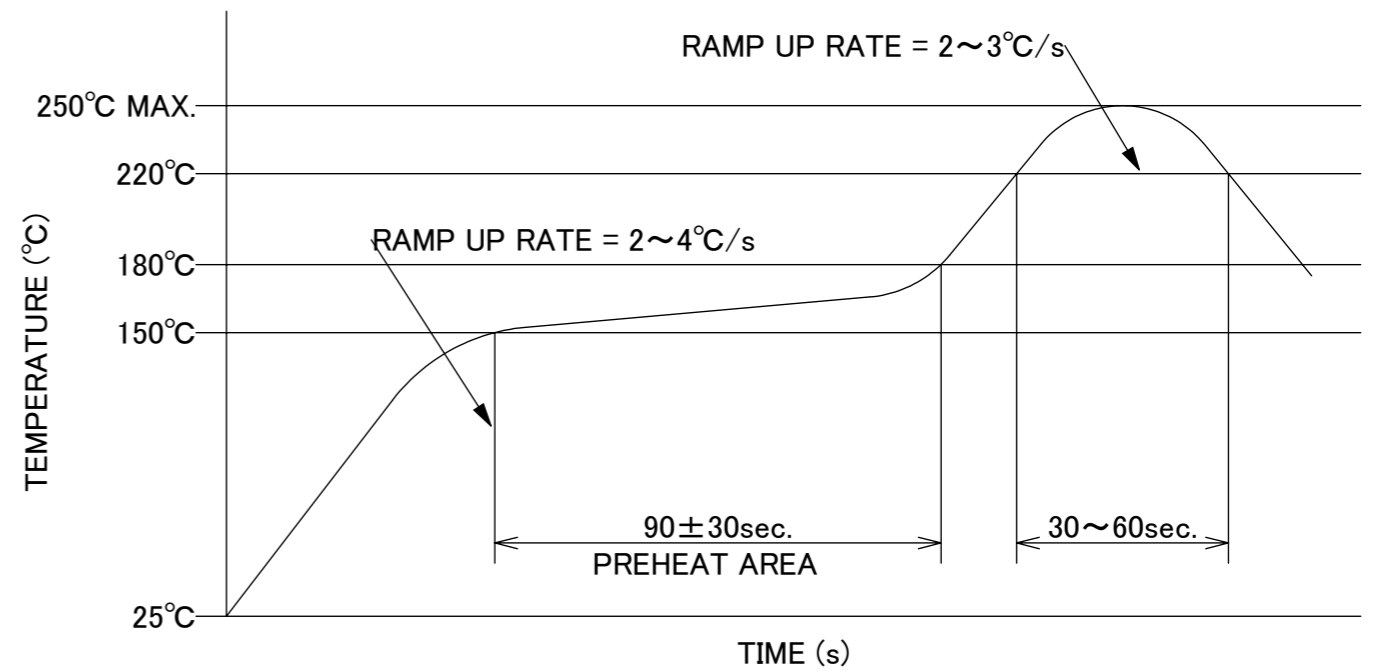


RECOMMENDED METAL MASK LAYOUT (t=0.10)

ANGLE	±2°	6 OVER 30 MAX.	±0.3	PROJECTION ⊕	SERIES No. R4	CUSTOMER COPY	
	6 MAX.	±0.2	30 OVER 120 MAX.				
GENERAL TOLERANCE.				TITLE		SCALE	I-PEX
DWG.	DATE			NOVASTACK® 35-HDH PLUG ASSEMBLY		10:1	
CHK.						UNIT mm	
APP.				DWG. No.	21003	SIZE A3	SHEET 3/5
						REV.	0



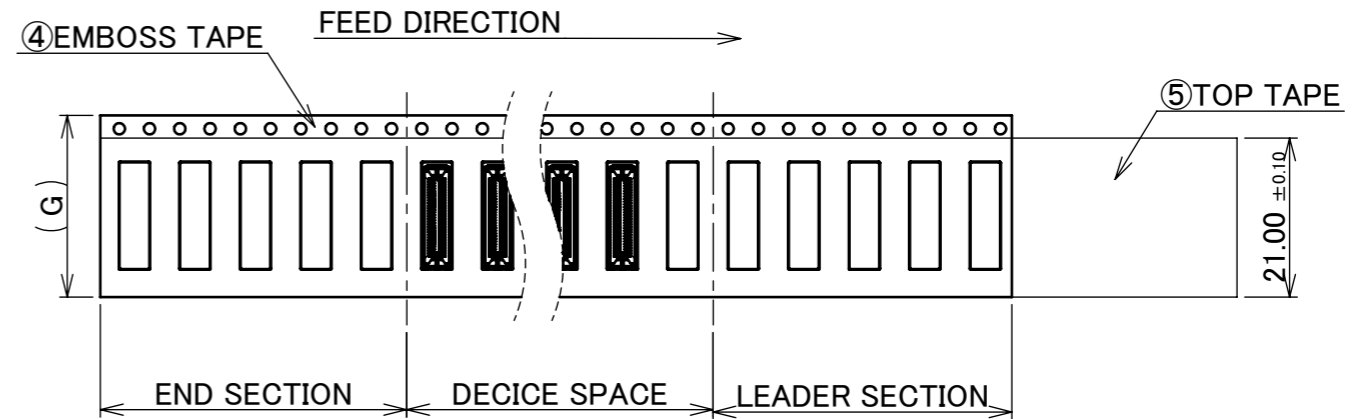
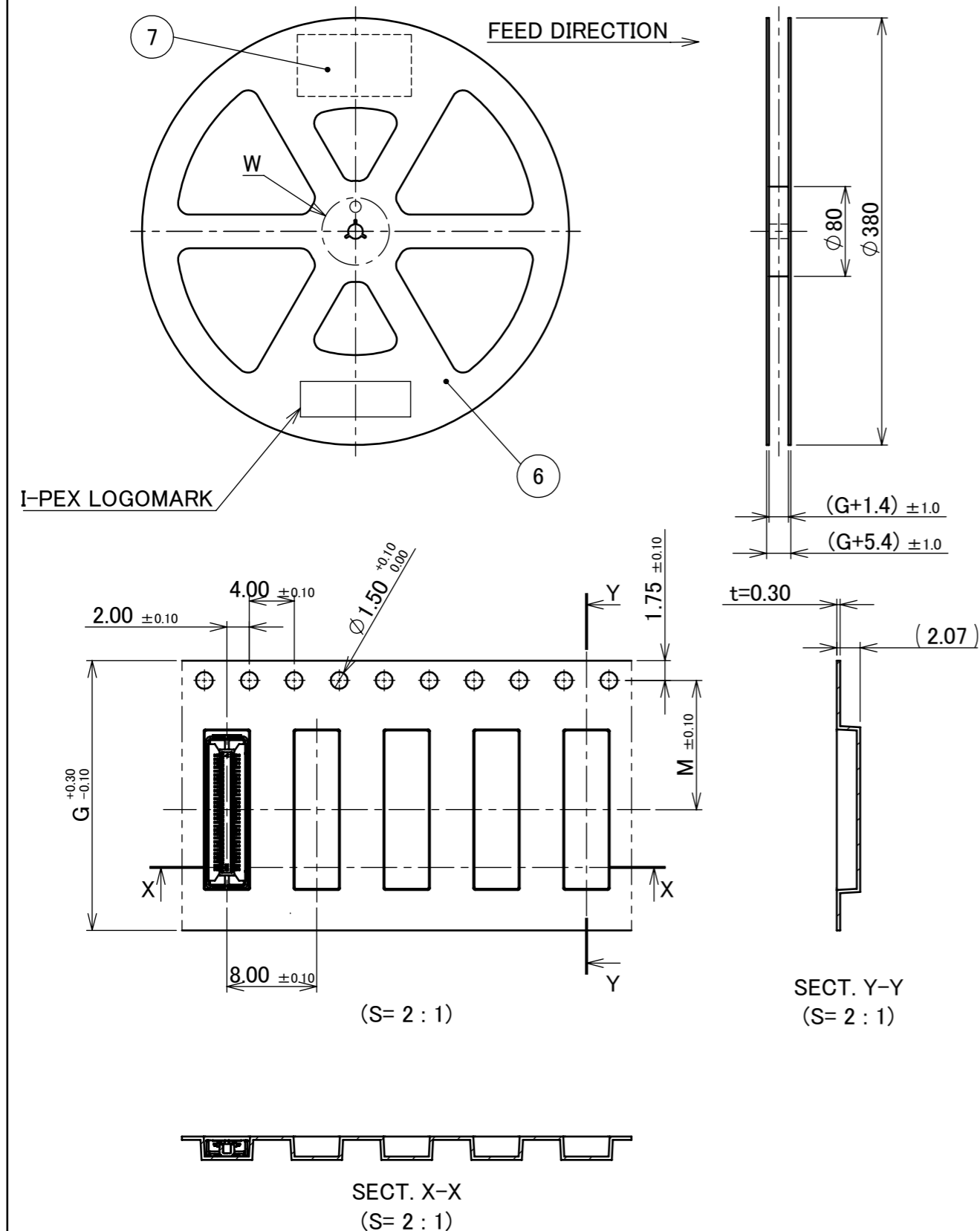
CONNECTOR ON RECOMMENDED FOOT PRINT PATTERN LAYOUT



REFLOW TEMPERATURE PROFILE
 SENJU METAL INDUSTRY CO., LTD. : M705-SHF(Sn96.5 Ag3.0 Cu0.5)

ANGLE	±2°	6 OVER 30 MAX.	±0.3	PROJECTION 	SERIES No. R4	CUSTOMER COPY				
6 MAX.	±0.2	30 OVER 120 MAX.	±0.5			SCALE 10:1	I-PEX			
GENERAL TOLERANCE.				TITLE NOVASTACK® 35-HDH PLUG ASSEMBLY	UNIT mm					
DWG.	DATE				SIZE A3	SHEET 4/5	REV. 0			
CHK.										
APP.								DWG. No. 21003		

PART NO.	POS.	G	M	QTY. PER EMBOSS REEL (PIECES / REEL)	QTY. PER PACKING CARTON (REELS / CARTON)
21003-060E	60P	24.0	11.50	5,000 / REEL	5,000 × 5 REELS = 25,000



NOTES.

1. TAPING SPECIFICATION FOLLOWS JIS C 0806 (IEC 60286-3).
2. MAKE EMPTY SECTION OF LEADER AND END ON EACH END OF THE TAPE.
3. TOP TAPE SHALL NOT STICK OUT FROM EMBOSS TAPE.
4. TOP TAPE SHALL NOT COVER FEED HOLE.

NO.	DESCRIPTION	MATERIAL	FINISH, REMARKS
7	PACKING LABEL	-	-
6	REEL	PS	ANTI-STATIC TYPE BLACK
5	TOP TAPE	PET t=0.062 TRANSPARENCY	ANTI-STATIC TYPE
4	EMBOSS TAPE	PS t=0.3 TRANSPARENCY	ANTI-STATIC TYPE

NO.	DESCRIPTION	MATERIAL	FINISH, REMARKS
ANGLE	$\pm 2^\circ$ 6 OVER 30 MAX.	± 0.3	PROJECTION
6 MAX.	± 0.2 30 OVER 120 MAX.	± 0.5	
GENERAL TOLERANCE.		TITLE	SCALE
DWG.	DATE	NOVASTACK® 35-HDH PLUG ASSEMBLY	1:X
CHK.			UNIT
APP.			mm
		DWG. No.	SIZE SHEET REV.
		21003	A3 5/5 0