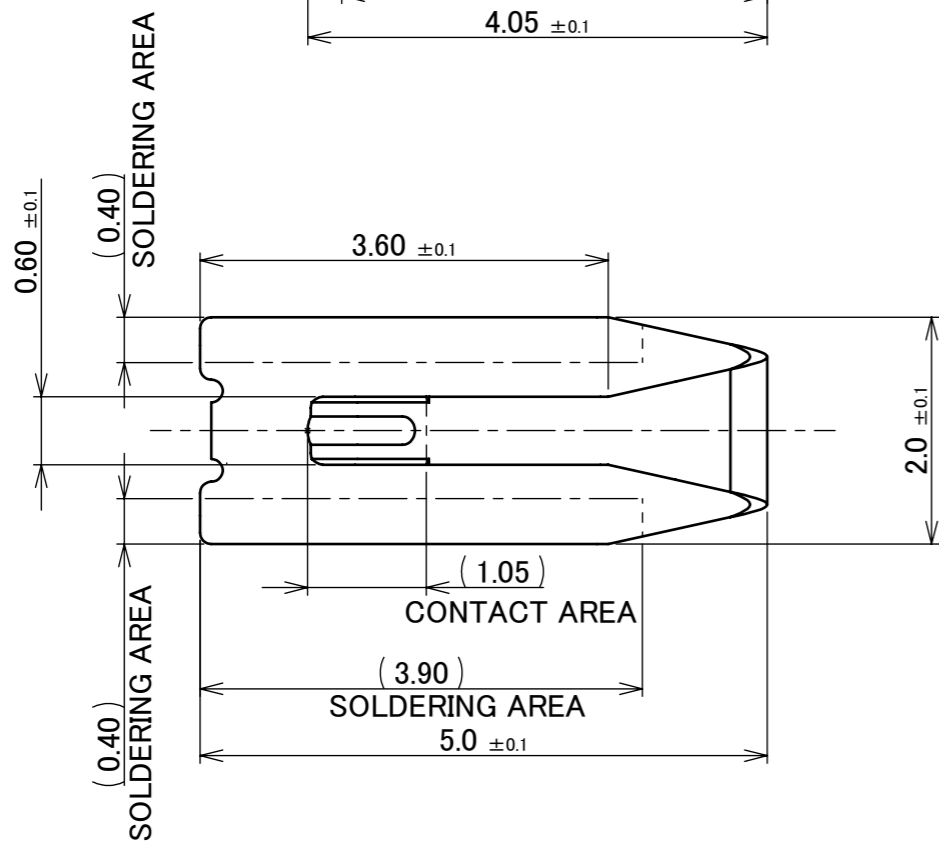
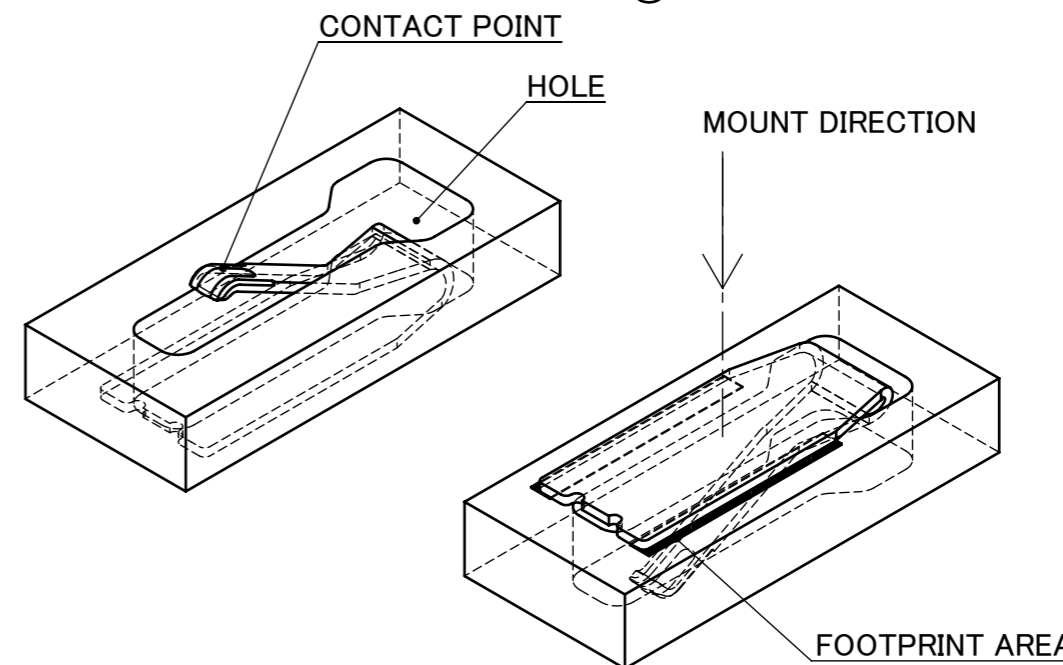
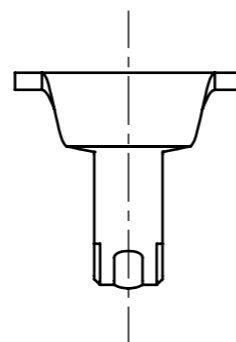
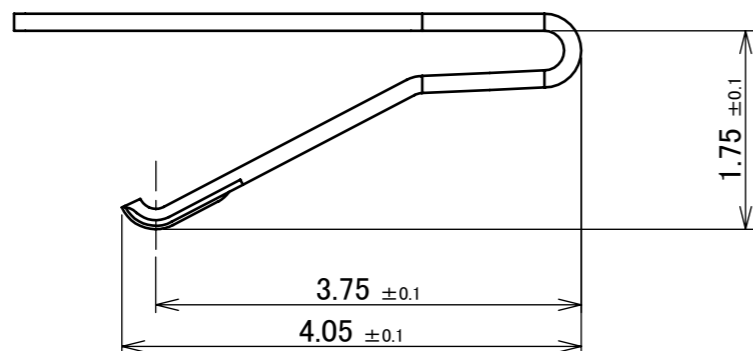
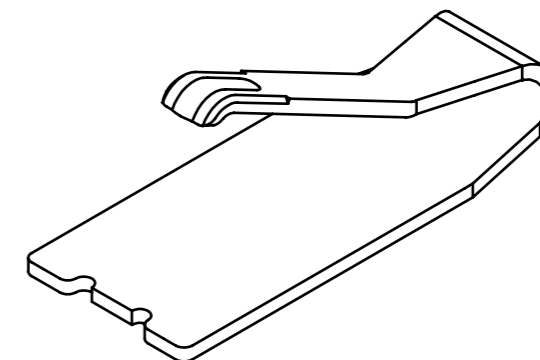
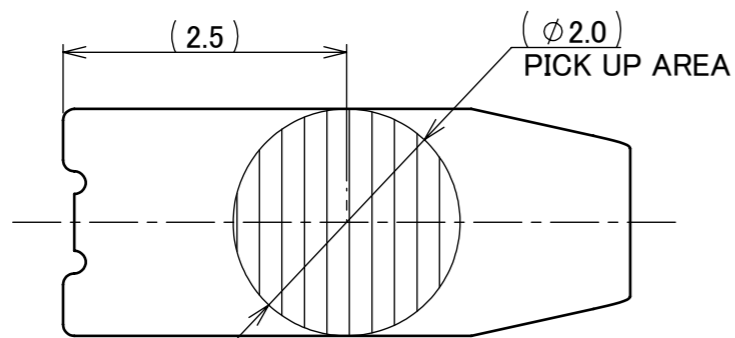




Halogen Free



RoHS Compliant

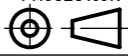



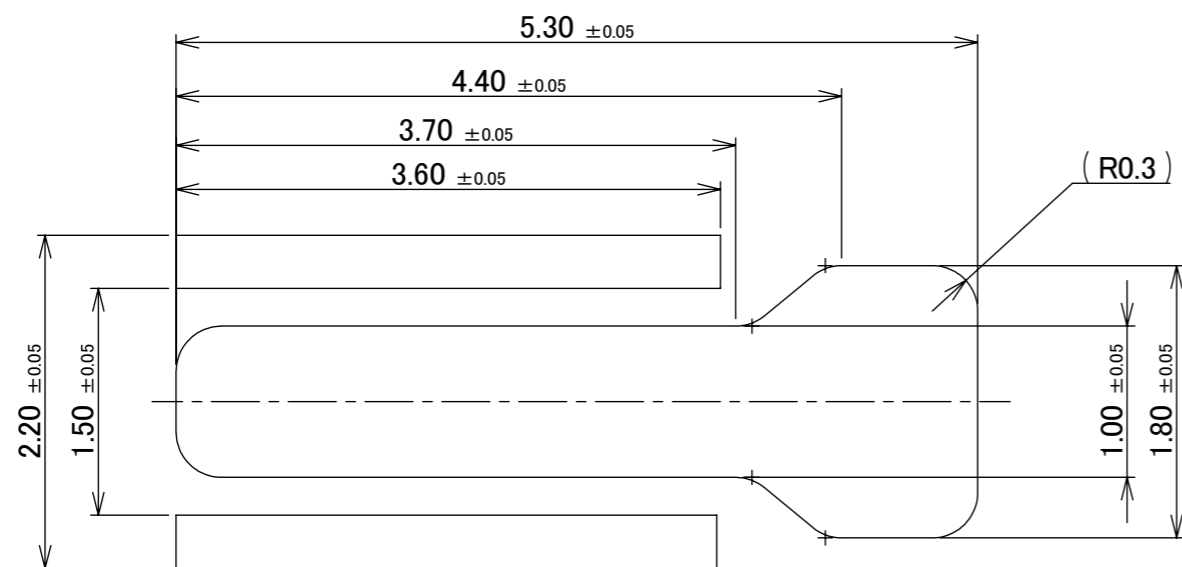
NOTES.
1.WORKING HEIGHT=1.05±0.2
2.BOARD THICKNESS=1.25 MAX.

1	CONNECTOR	PHOSPHOR BRONZE T=0.15mm	UNDER PLATE Ni 1.27 μ m MIN. CONTACT AREA Au 0.1 μ m MIN.
NO.	DISCRIPTION	MATERIAL	FINISH , REMARKS

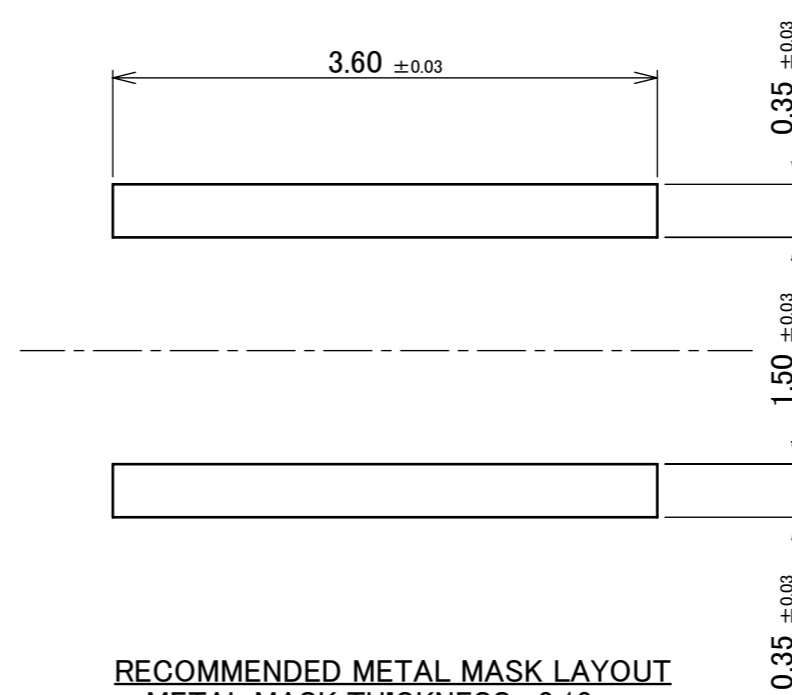
5	Z220169	S.D	Feb./18/'22	Y.H	ANGLE	±2°	6 OVER 30 MAX.	±0.3	PROJECTION ⊕	SERIES No. R0	CUSTOMER COPY	
4	Z190764	SEI	June/07/'19	Y.S	6 MAX.	±0.2	30 OVER 120 MAX.	±0.5				
3	Z181244	SEI	Sept./21/'18	TAK	GENERAL TOLERANCE.				TITLE MP-S03	SCALE 15:1	UNIT mm	I-PEX
2	Z180677	SEI	May/28/'18	TAK	DWG.	DATE		2014/12/16				
1	Z161336	Y.O	Oct./27/'16	TAK	T.Yayoshi	DATE						
0	Z141440	T.Y	Dec./16/'14		CHK.	DATE		2014/12/18				
REV.	ECN	BY	DATE	APP.	APP.	DATE			DWG. No.	3112	SIZE A3	SHEET 1/5

ITEMS	SPECIFICATION
RATING VOLTAGE	5 V AC (PER A CONTACT)
RATING AMPERAGE (FOR SIGNAL CONTACT)	3 A AC (PER A CONTACT)
OPERATING TEMPERATURE	248~358K(-40°C~85°C)
OPERATING HUMIDITY	85% MAX.(NON-CONDENSING)
CONTACT RESISTANCE (FOR SIGNAL CONTACT)	INITIAL : 70 mohm MAX. / AFTER TEST : 70 mohm MAX.
DURABILITY	10 CYCLES
CONTACT FORCE	0.30~1.10 N
COPLANARITY	0.08 MAX.
PRODUCT SPECIFICATION	PRS-2228
TEST REPORT	TR-16041
PACKING STANDARD	PST-18051
APPEARANCE CRITERIA No.	QLS-A***

ANGLE	±2°	6 OVER 30 MAX.	±0.3	PROJECTION 	SERIES No. R0	CUSTOMER COPY		
6 MAX.	±0.2	30 OVER 120 MAX.	±0.5					
GENERAL TOLERANCE.				TITLE MP-S03	SCALE			
DWG.	DATE							
CHK.	DATE							
APP.	DATE							
				DWG. No.	3112	SIZE A3	SHEET 2/5	REV. 5

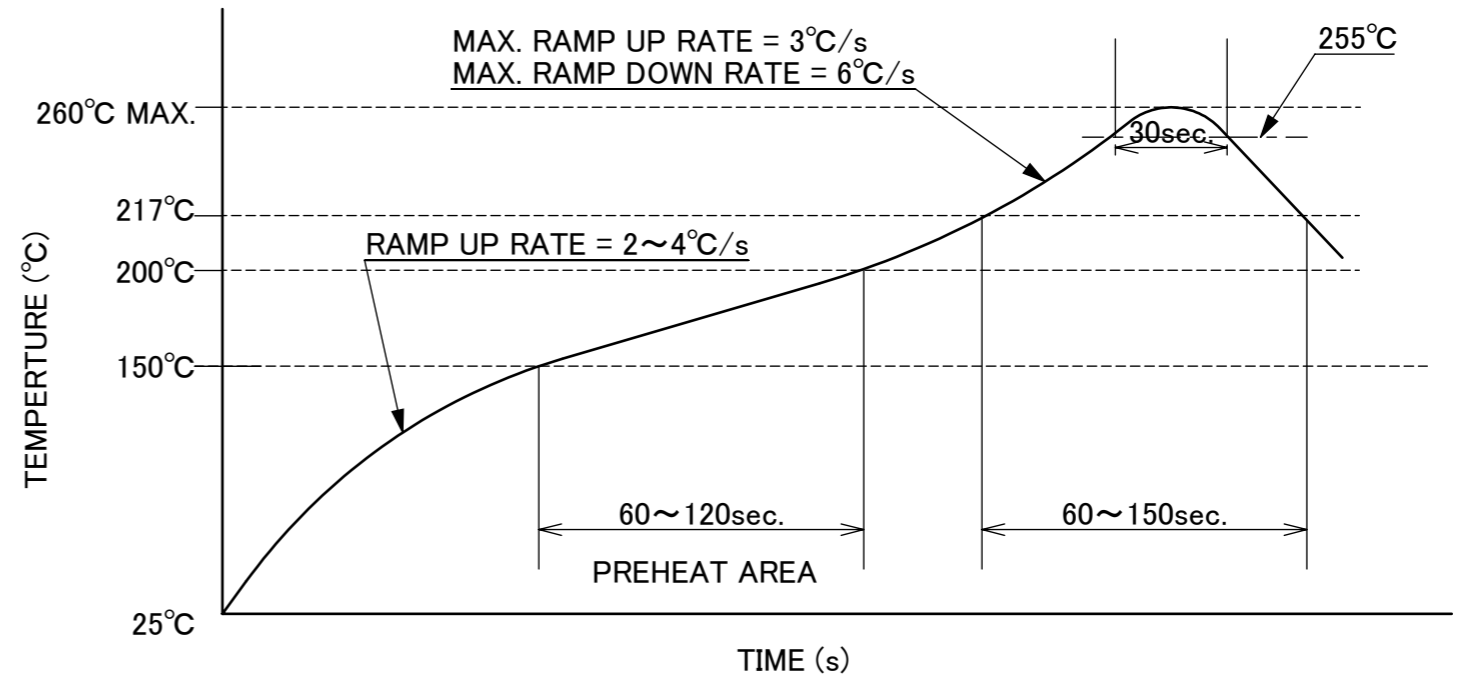
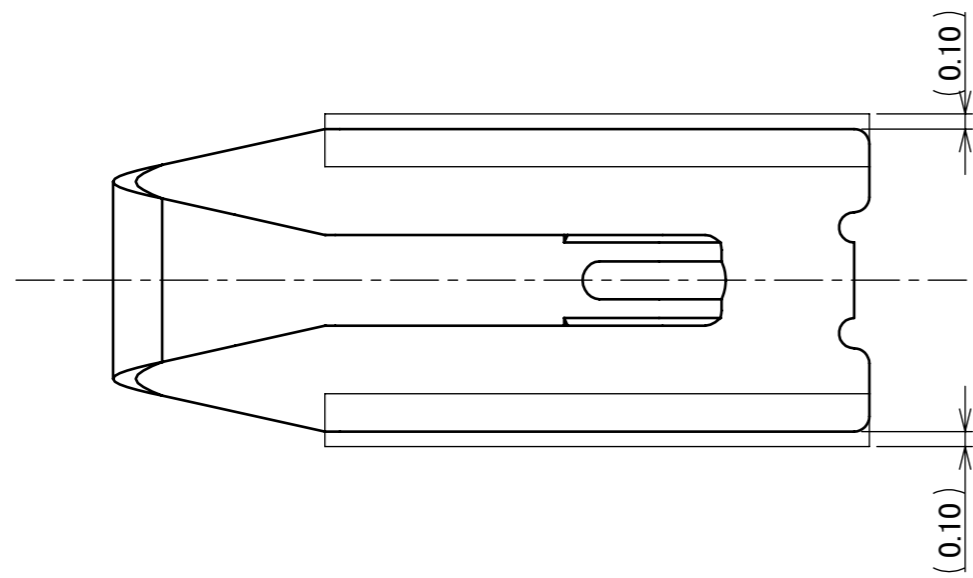


RECOMMENDED FOOTPRINT PATTERN LAYOUT



RECOMMENDED METAL MASK LAYOUT
METAL MASK THICKNESS : 0.10mm

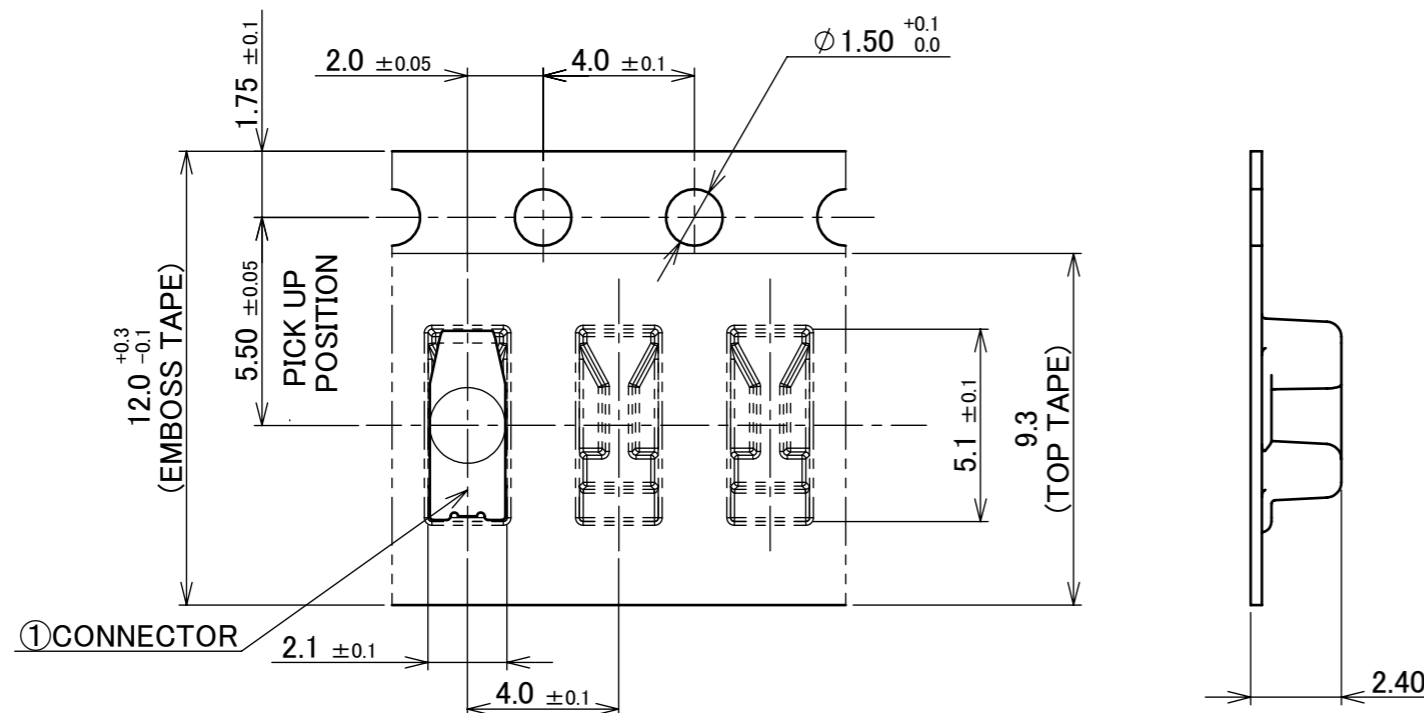
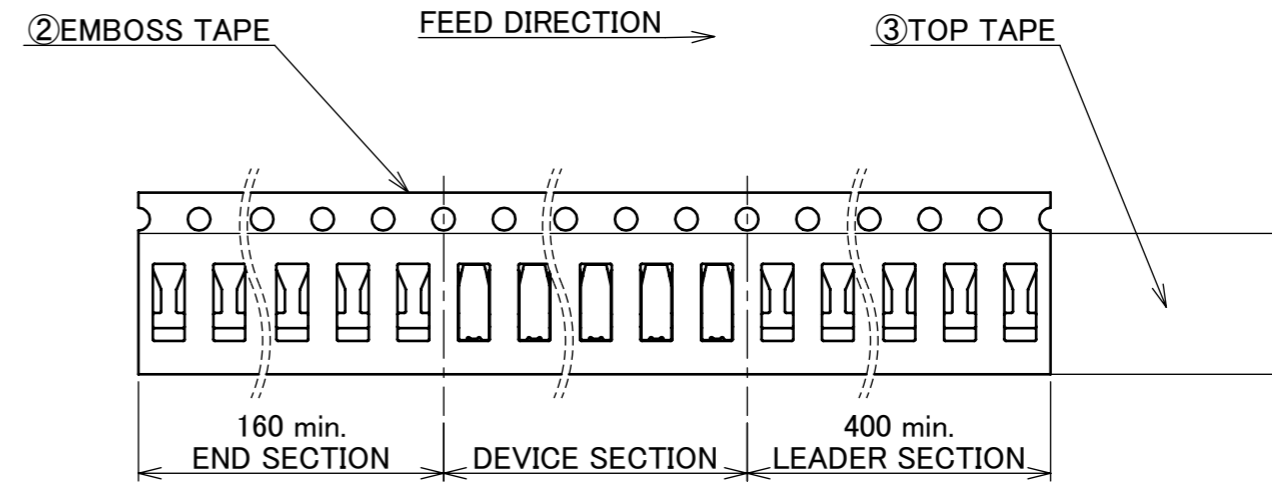
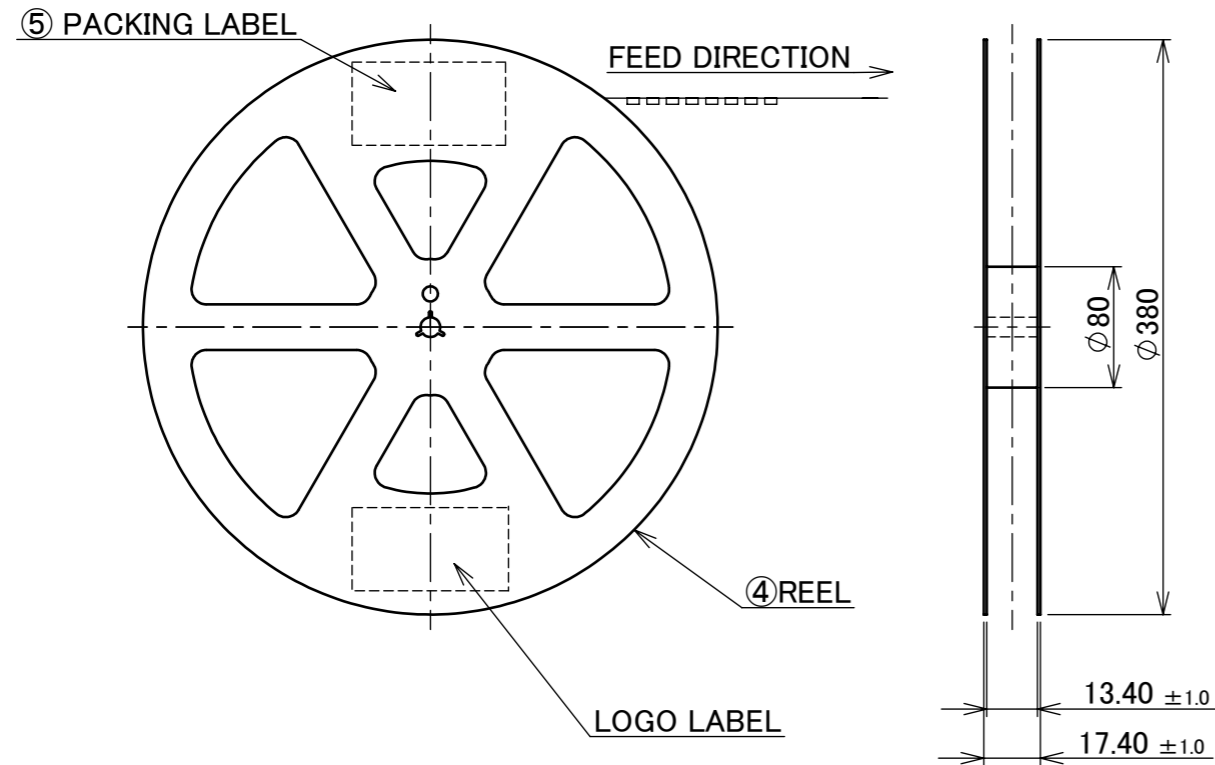
ANGLE	±2°	6 OVER 30 MAX.	±0.3	PROJECTION ⊕	SERIES No. R0	CUSTOMER COPY			
6 MAX.	±0.2	30 OVER 120 MAX.	±0.5						
GENERAL TOLERANCE.				TITLE		SCALE	I-PEX		
DWG.	DATE			MP-S03		20:1			
CHK.						UNIT			
APP.				DWG. No.		SIZE	SHEET	REV.	
				3112		A3	3/5	5	



REFLOW TEMPERATURE PROFILE
 SENJU METAL INDUSTRY CO., LTD. : M705-SHF(Sn96.5 Ag3.0 Cu0.5)

ANGLE	±2°	6 OVER 30 MAX.	±0.3	PROJECTION 	SERIES No. R0	CUSTOMER COPY			
6 MAX.	±0.2	30 OVER 120 MAX.	±0.5						
GENERAL TOLERANCE.				TITLE		SCALE	I-PEX		
DWG.	DATE			MP-S03		20:1			
CHK.						UNIT			
APP.						mm			
				DWG. No.	3112	SIZE	SHEET	REV.	
						A3	4/5	5	

PART NO.	QTY. PER EMBOSS REEL (PIECES / REEL)	QTY. PER PACKING CARTON (REELS / CARTON)
3112-0001	7000 / REEL	7000 / REEL × 10 / CARTON = 70000



NOTES.

3. TAPING SPECIFICATION FOLLOWS JIS C 0806(IEC 60286-3).
4. MAKE EMPTY SECTION OF LEADER AND END ON EACH END OF THE TAPE.
5. TOP TAPE SHALL NOT STICK OUT FROM EMBOSS TAPE.
6. TOP TAPE SHALL NOT COVER FEED HOLE.

NO.	DISCRIPTION	MATERIAL	FINISH , REMARKS
5	PACKING LABEL	-	-
4	REEL	PS	ANTI-STATIC TYPE BLACK
3	TOP TAPE	PET t=0.062 TRANSPARENCY	ANTI-STATIC TYPE
2	EMBOSS TAPE	PS t=0.3 TRANSPARENCY	ANTI-STATIC TYPE
1	CONNECTOR	-	-

ANGLE	$\pm 2^\circ$	6 OVER 30 MAX.	± 0.3	PROJECTION ①	SERIES No. R0	CUSTOMER COPY		
6 MAX.	± 0.2	30 OVER 120 MAX.	± 0.5					
GENERAL TOLERANCE.				TITLE	SCALE	I-PEX		
DWG.	DATE			MP-S03	5:1			
CHK.					UNIT			
APP.				DWG. No.	mm			
				3112	SIZE	SHEET	REV.	
					A3	5/5	5	