

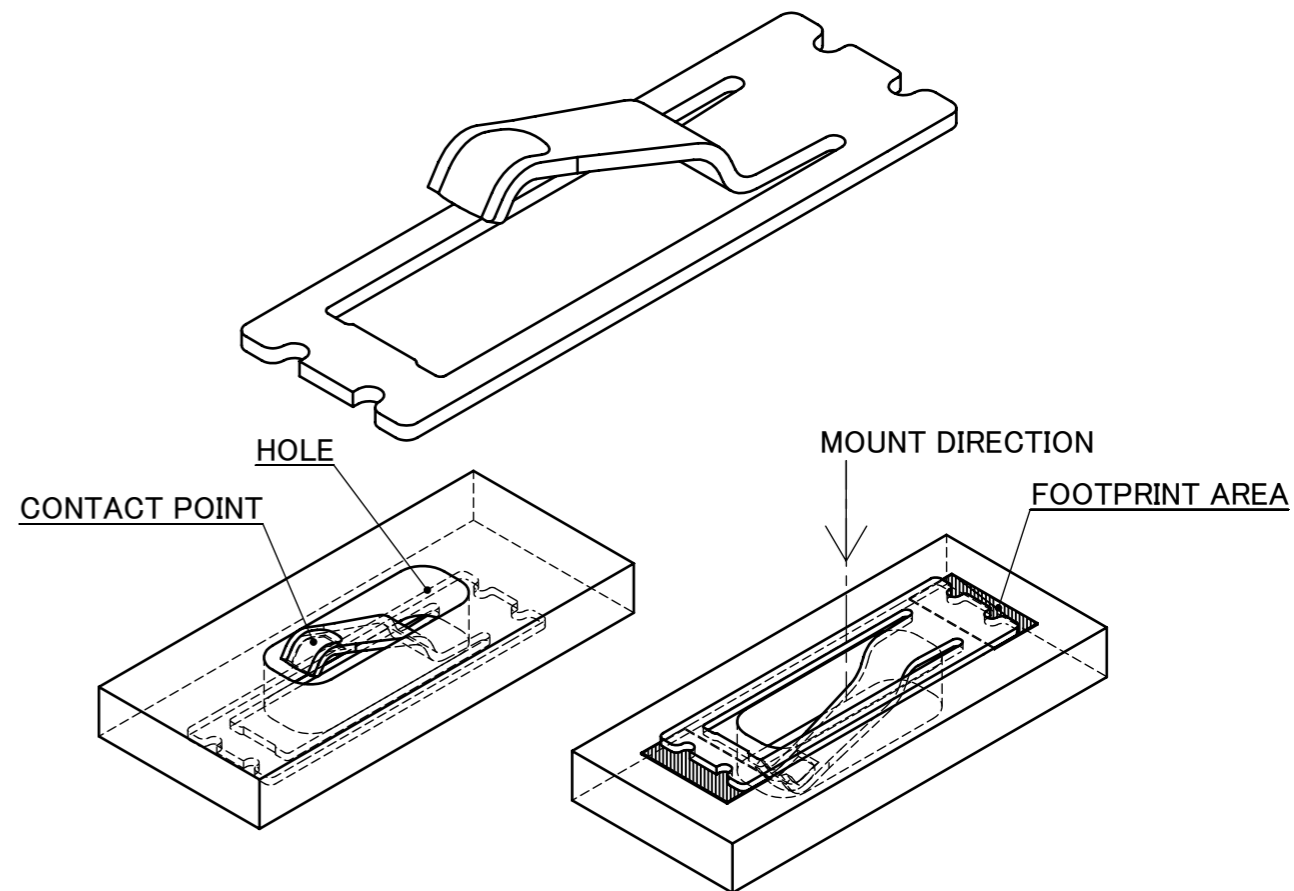
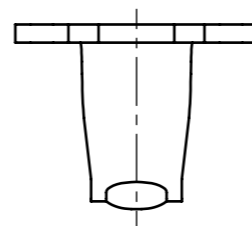
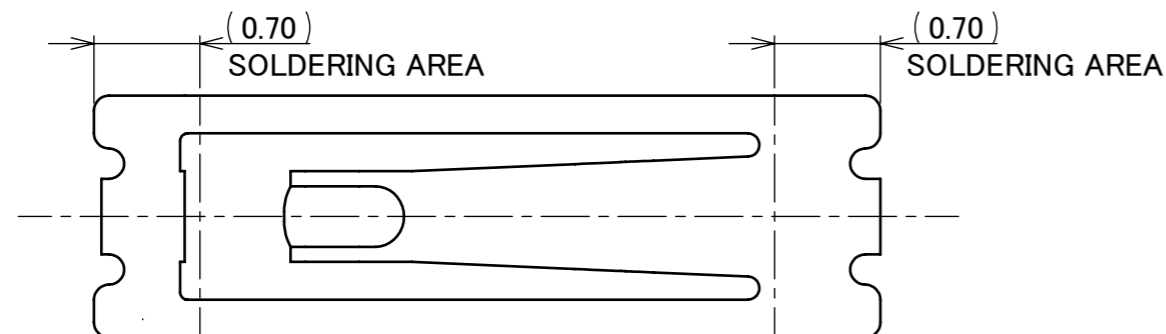
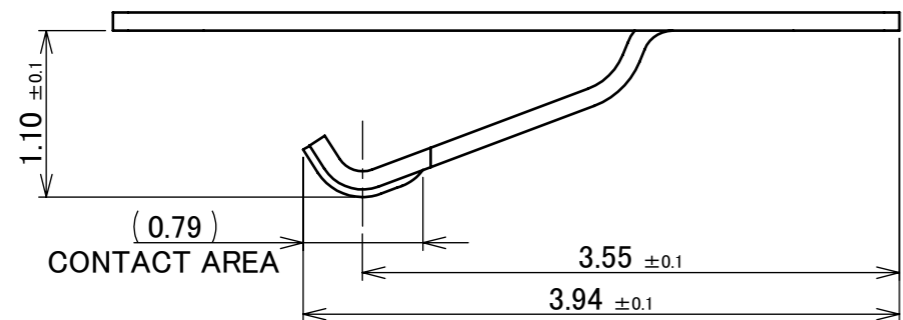
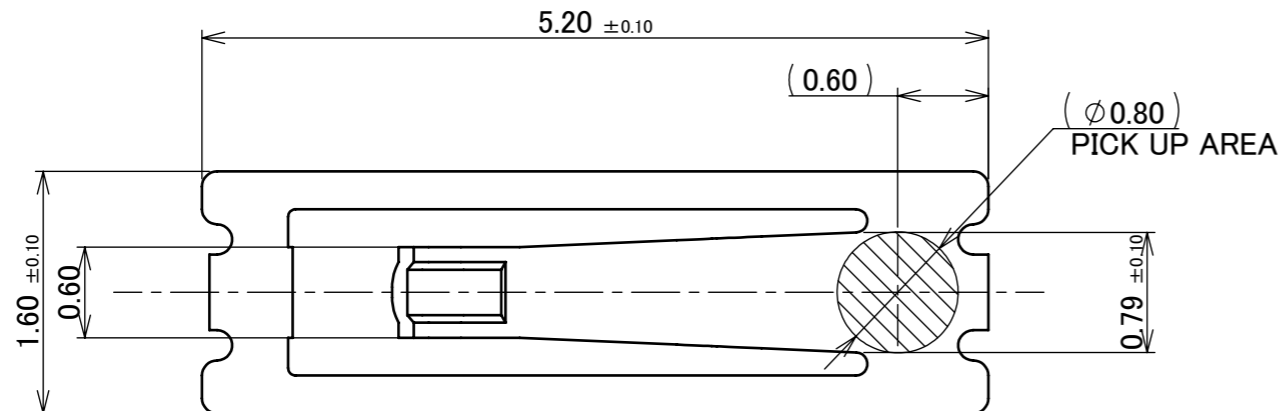
PART NO.
3110-0001



Halogen Free



RoHS Compliant

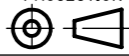



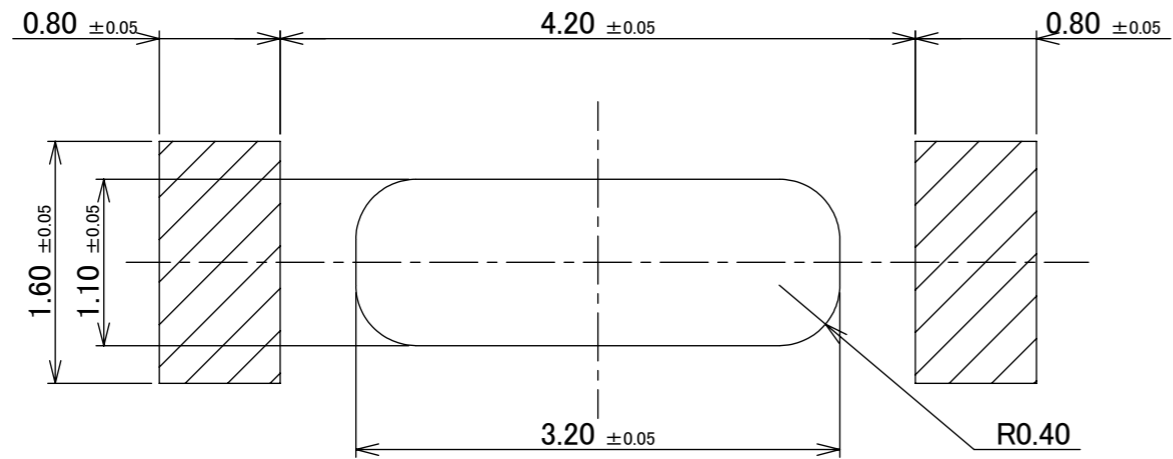
NOTES.  
 1.WORKING HEIGHT=0.75±0.10  
 2.BOARD THICKNESS=0.85 MAX.

1	CONNECTOR	PHOSPHOR BRONZE T=0.12mm	UNDER PLATE Ni 1.27 μm MIN. CONTACT AREA Au 0.1 μm MIN.
NO.	DISCRIPTION	MATERIAL	FINISH , REMARKS

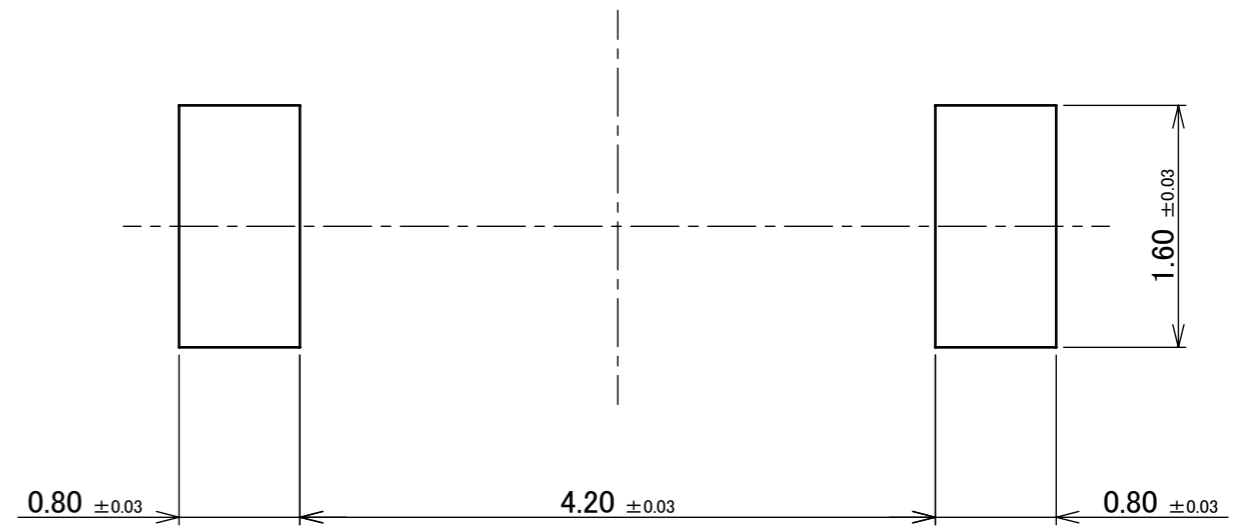
5	Z220169	S.D	Feb./18/'22	Y.H	ANGLE	±2°	6 OVER 30 MAX.	±0.3	PROJECTION ⊕	SERIES No. R0	CUSTOMER COPY	
4	Z190763	SEI	June/07/'19	Y.S	6 MAX.	±0.2	30 OVER 120 MAX.	±0.5				
3	Z181243	SEI	Sept./21/'18	TAK	GENERAL TOLERANCE.				TITLE MP-S01	SCALE 20:1	UNIT mm	I-PEX
2	Z180676	SEI	May/28/'18	TAK	DWG.	DATE		2014/12/16				
1	Z161336	Y.O	Oct./27/'16	TAK	T.Yayoshi	DATE						
0	Z141440	T.Y	Dec./16/'14		CHK.	DATE		2014/12/17	DWG. No. 3110	SIZE A3	SHEET 1/5	REV. 5
REV.	ECN	BY	DATE	APP.	APP.	DATE		2014/12/18				
REVISION RECORD					T.Takano		2014/12/18					

ITEMS	SPECIFICATION
RATING VOLTAGE	5 V AC (PER A CONTACT)
RATING AMPERAGE (FOR SIGNAL CONTACT)	0.7 A AC (PER A CONTACT)
OPERATING TEMPERATURE	248~358K(-40°C~85°C)
OPERATING HUMIDITY	85% MAX.(NON-CONDENSING)
CONTACT RESISTANCE (FOR SIGNAL CONTACT)	INITIAL : 25 mohm MAX. / AFTER TEST : 25 mohm MAX.
DURABILITY	10 CYCLES
CONTACT FORCE	0.30~0.95 N
COPLANARITY	0.08 MAX.
PRODUCT SPECIFICATION	PRS-2227
TEST REPORT	TR-16040
PACKING STANDARD	PST-18050
APPEARANCE CRITERIA No.	QLS-A***

ANGLE	±2°	6 OVER 30 MAX.	±0.3	PROJECTION 	SERIES No. R0	CUSTOMER COPY		
6 MAX.	±0.2	30 OVER 120 MAX.	±0.5					
GENERAL TOLERANCE.				TITLE MP-S01	SCALE			
DWG.	DATE							
CHK.	DATE							
APP.	DATE							
				DWG. No.	3110	SIZE A3	SHEET 2/5	REV. 5

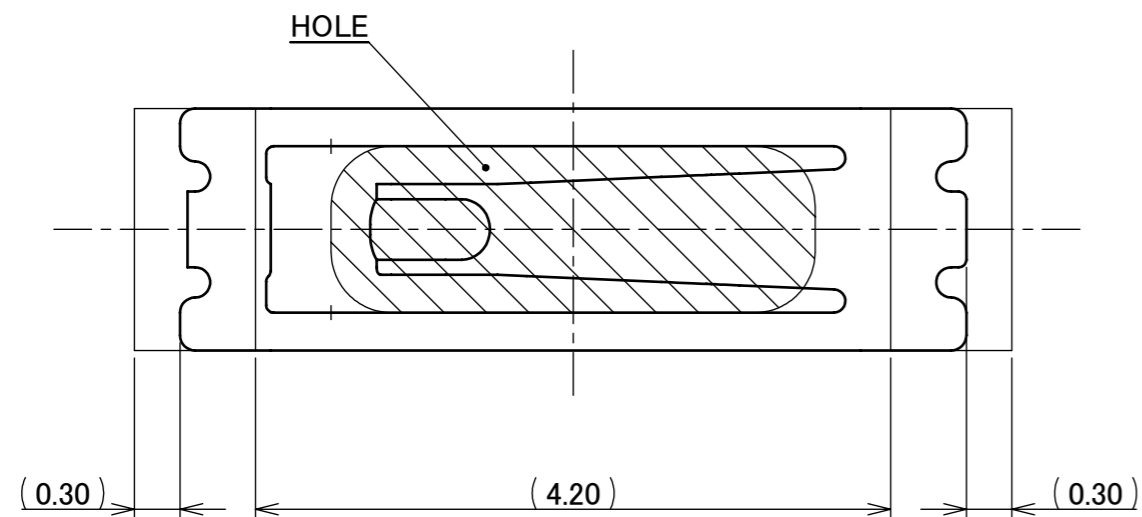


RECOMMENDED FOOTPRINT PATTERN LAYOUT

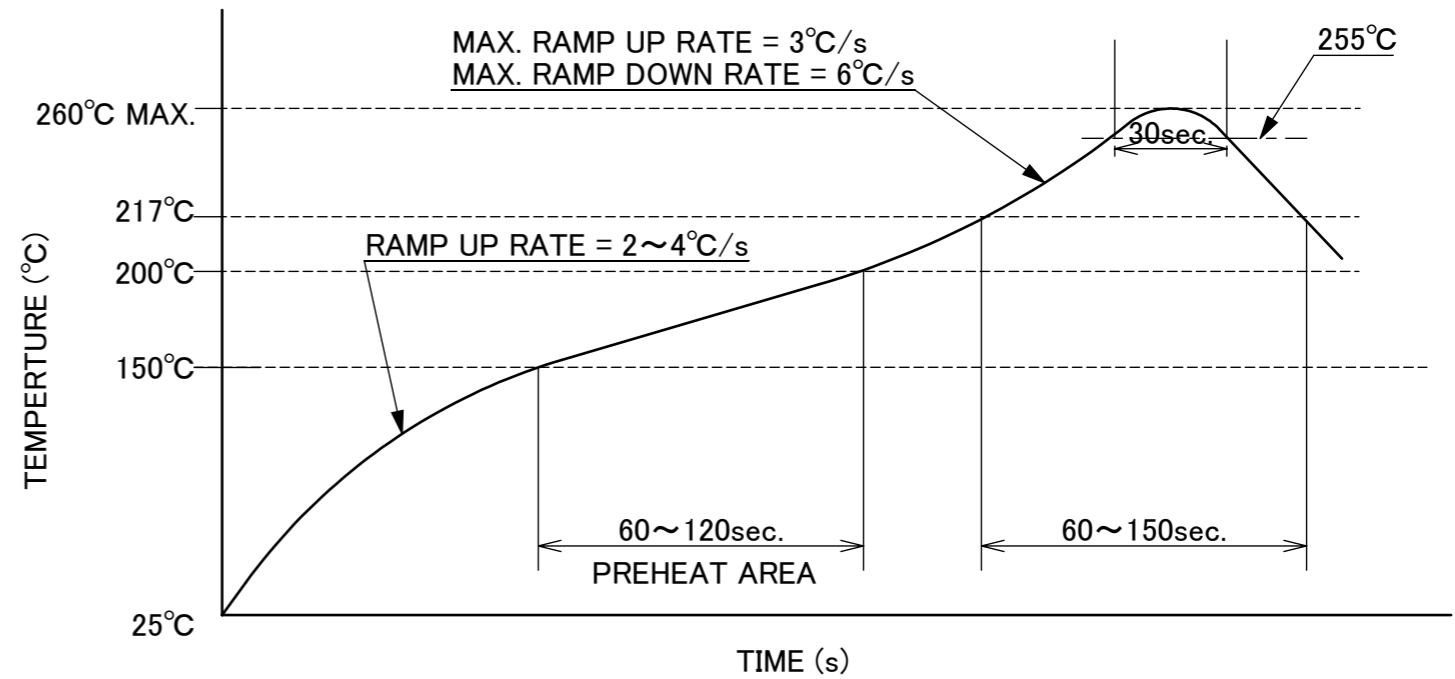


RECOMMENDED METAL MASK LAYOUT  
METAL MASK THICKNESS : T=0.10mm

ANGLE	±2°	6 OVER 30 MAX.	±0.3	PROJECTION ⊕	SERIES No. R0	CUSTOMER COPY			
6 MAX.	±0.2	30 OVER 120 MAX.	±0.5						
GENERAL TOLERANCE.				TITLE		SCALE	<b>I-PEX</b>		
DWG.	DATE			MP-S01		20:1			
CHK.						UNIT			
APP.				DWG. No. 3110		mm			
						SIZE	SHEET	REV.	
						A3	3/5	5	



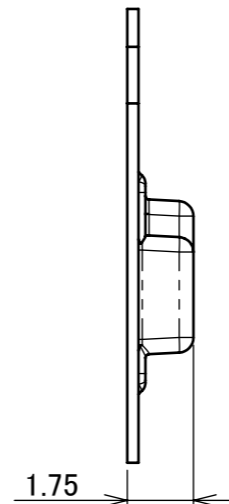
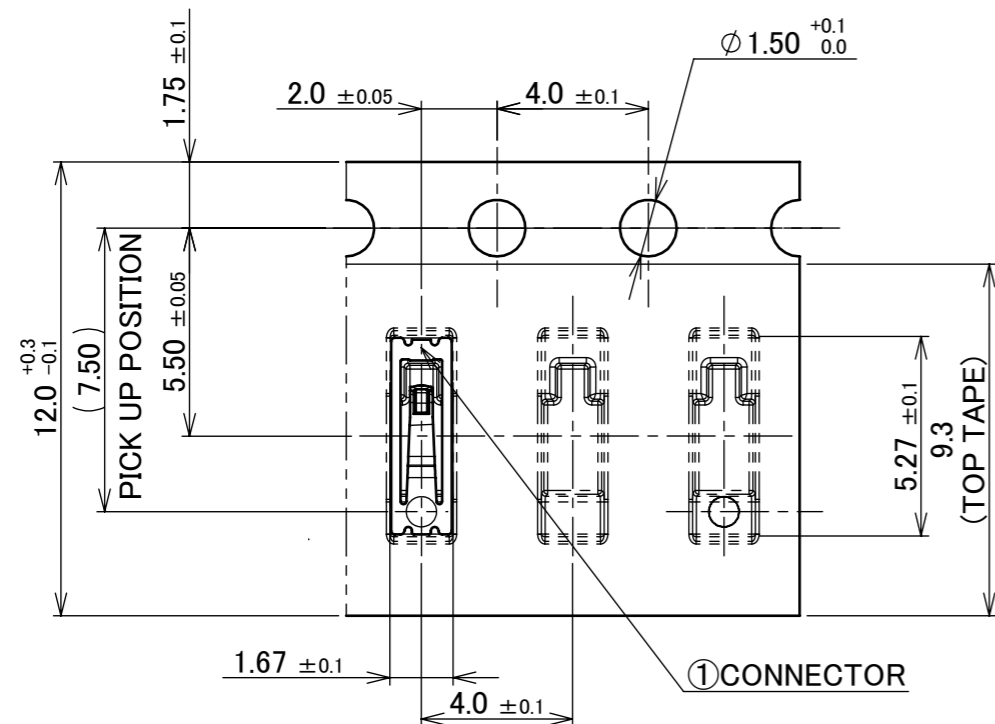
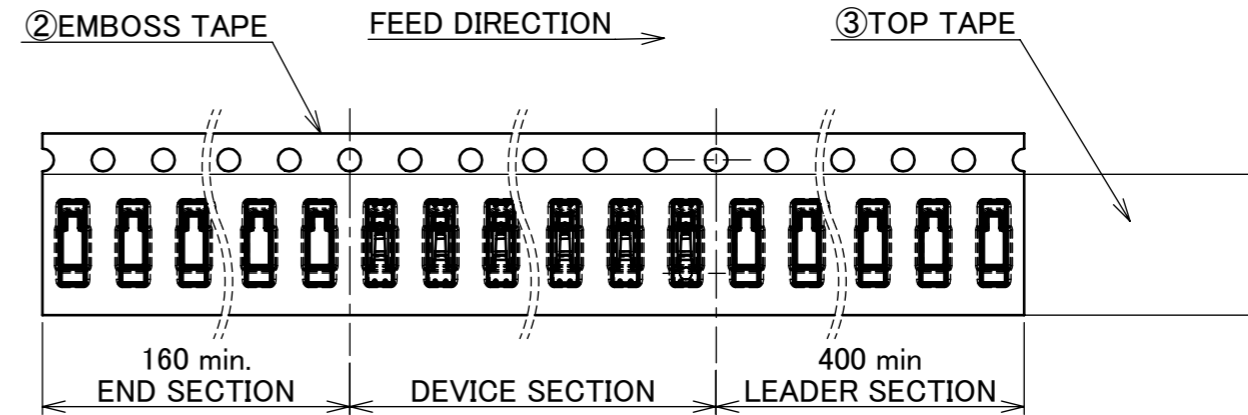
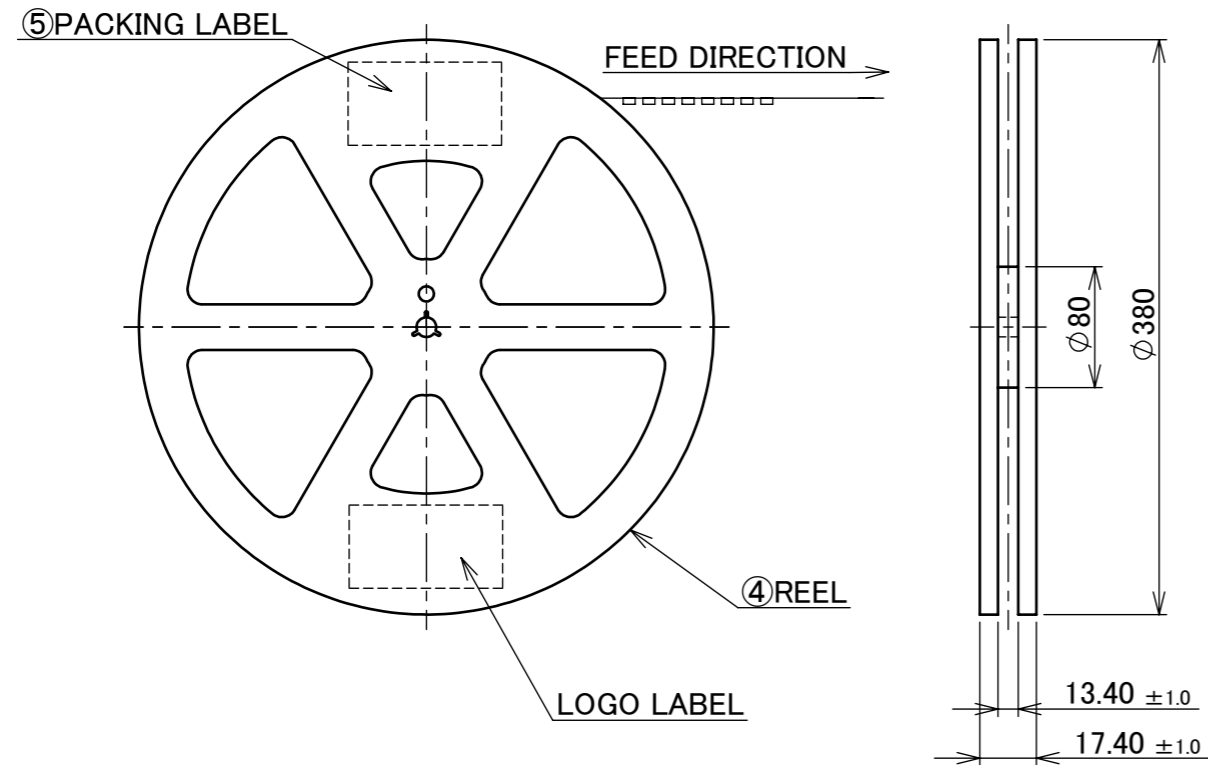
CONNECTOR ON RECOMMENDED FOOTPRINT PATTERN



REFLOW TEMPERATURE PROFILE  
 SENJU METAL INDUSTRY CO., LTD. : M705-SHF(Sn96.5 Ag3.0 Cu0.5)

ANGLE	±2°	6 OVER 30 MAX.	±0.3	PROJECTION 	SERIES No. R0	CUSTOMER COPY		
6 MAX.	±0.2	30 OVER 120 MAX.	±0.5			SCALE 20:1	<b>I-PEX</b>	
GENERAL TOLERANCE.				TITLE	UNIT	mm		
DWG.	DATE			MP-S01	SIZE	SHEET	REV.	
CHK.					A3	4/5	5	
APP.					DWG. No.	3110		

PART NO.	QTY. PER EMBOSS REEL (PIECES / REEL)	QTY. PER PACKING CARTON (REELS / CARTON)
950472-0001	10000 / REEL	10000/REEL × 10/CARTON = 100000



NOTES.

3. TAPING SPECIFICATION FOLLOWS JIS C 0806 (IEC 60286-3).
4. MAKE EMPTY SECTION OF LEADER AND END ON EACH END OF THE TAPE.
5. TOP TAPE SHALL NOT STICK OUT FROM EMBOSS TAPE.
6. TOP TAPE SHALL NOT COVER FEED HOLE.

NO.	DISCRIPTION	MATERIAL	FINISH , REMARKS
5	PACKING LABEL	-	-
4	REEL	PS	ANTI-STATIC TYPE BLACK
3	TOP TAPE	PET t=0.062 TRANSPARENCY	ANTI-STATIC TYPE
2	EMBOSS TAPE	PS t=0.3 TRANSPARENCY	ANTI-STATIC TYPE
1	CONNECTOR	-	-

ANGLE	±2°	6 OVER 30 MAX.	±0.3	PROJECTION ⊕	SERIES No. R0	CUSTOMER COPY
6 MAX.	±0.2	30 OVER 120 MAX.	±0.5			
GENERAL TOLERANCE.				TITLE	SCALE	I-PEX
DWG.	DATE			MP-S01	5:1	
CHK.					UNIT mm	
APP.		DWG. No.	3110	SIZE	SHEET	REV.
				A3	5/5	5