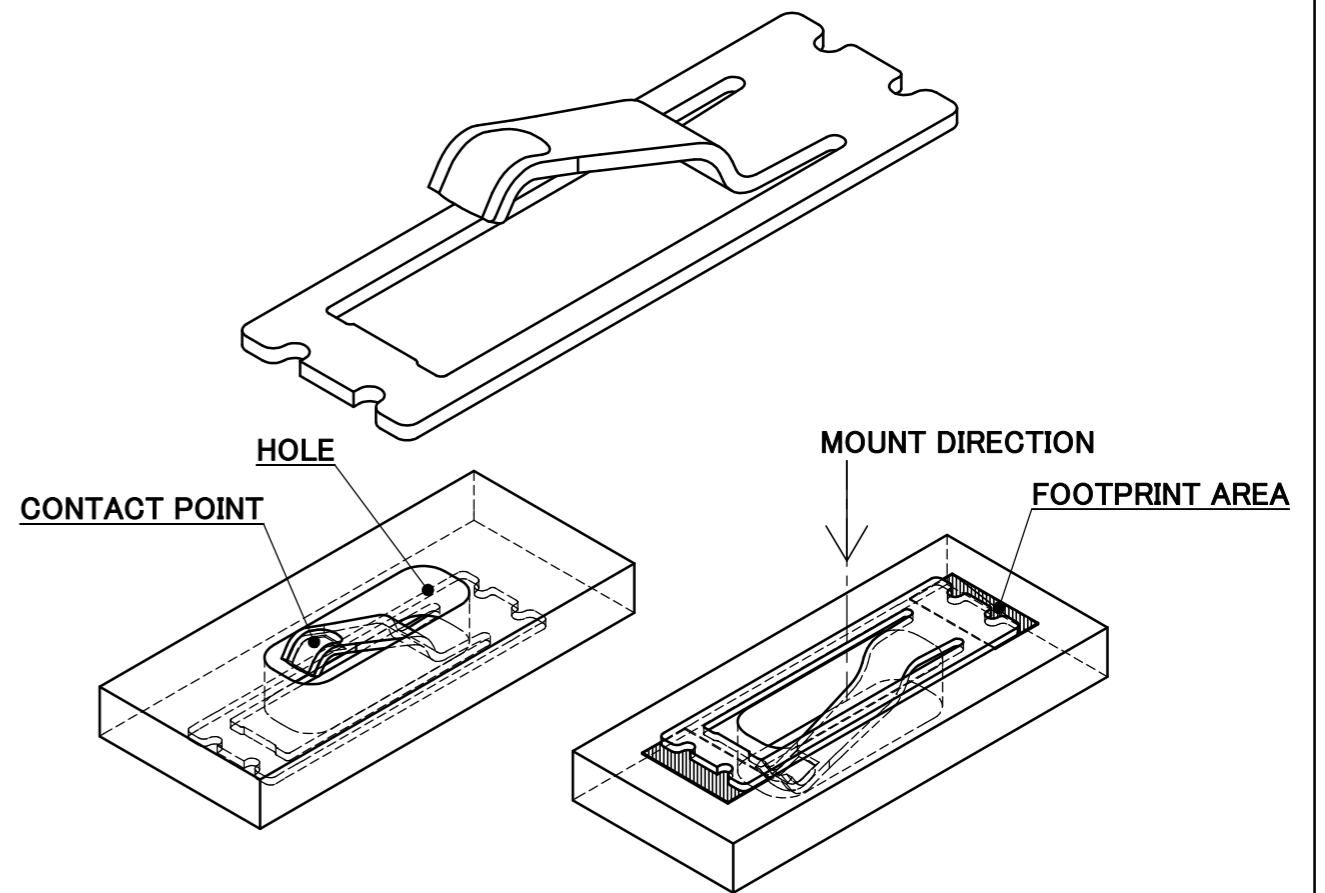
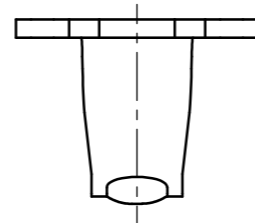
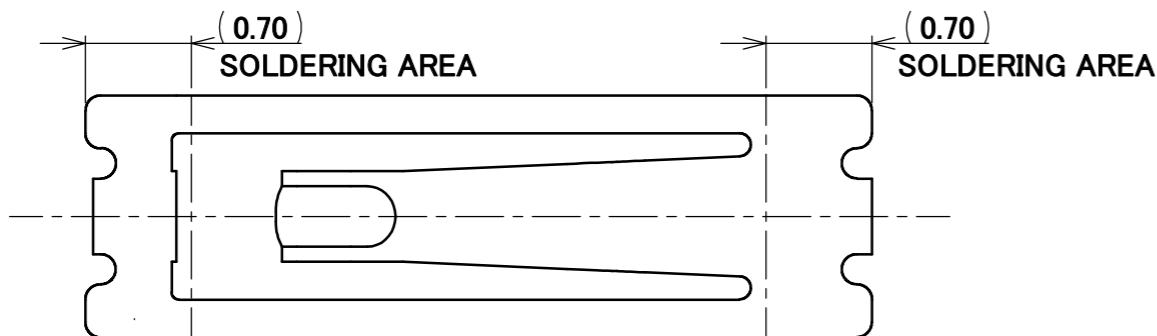
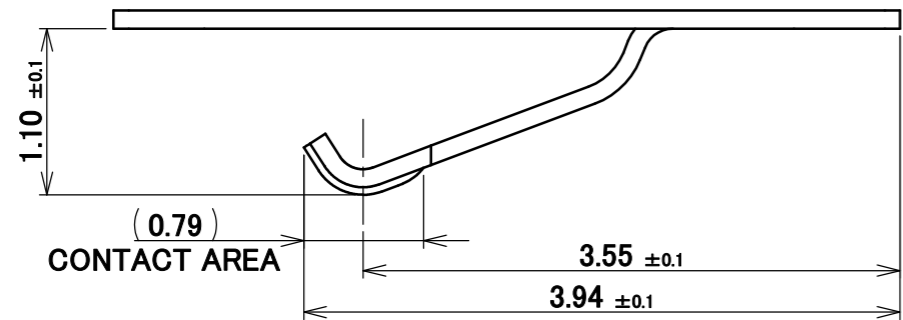
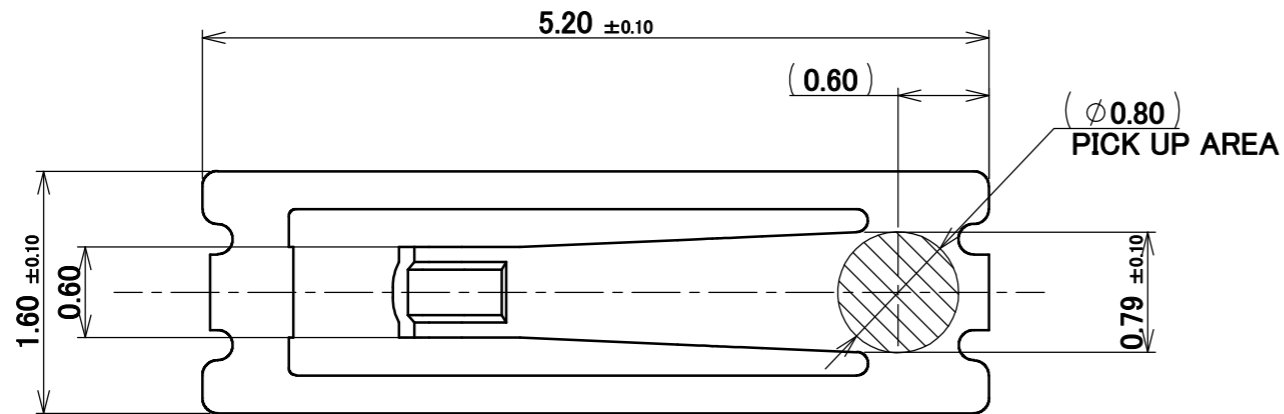


PART NO.

3110-0001



NOTES.

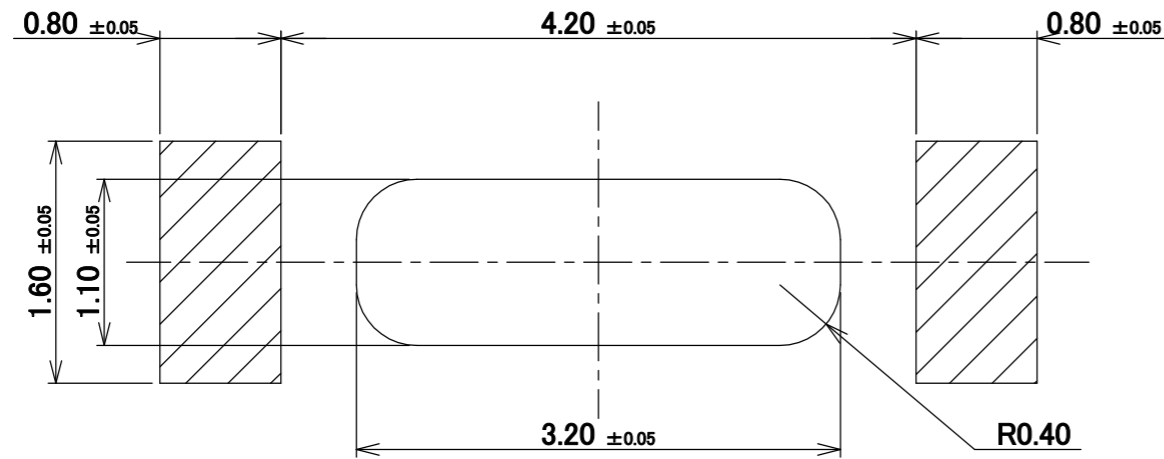
- 1.WORKING HEIGHT=0.75±0.10
- 2.BOARD THICKNESS=0.85 MAX.

1	CONNECTOR	PHOSPHOR BRONZE T=0.12mm	UNDER PLATE Ni 1.27 μ m MIN. CONTACT AREA Au 0.1 μ m MIN.
NO.	DISCRIPTION	MATERIAL	FINISH , REMARKS

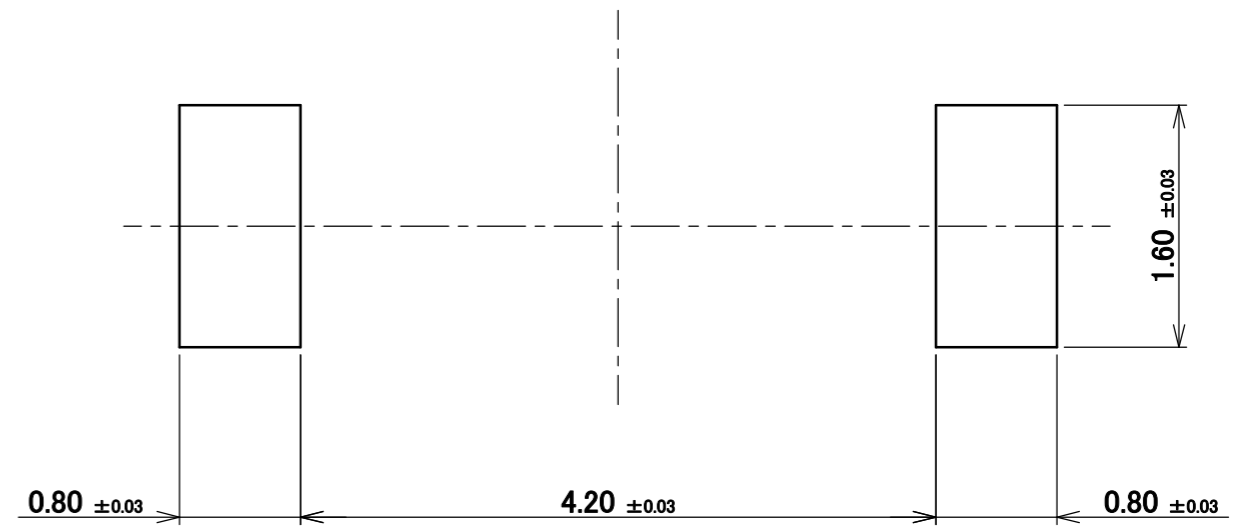
4	Z190763	SEI	June/07/'19	Y.S	ANGLE ±2° 6 OVER 30 MAX. ±0.3	PROJECTION 	SERIES No. R0	CUSTOMER COPY	
3	Z181243	SEI	Sept./21/'18	TAK	6 MAX. ±0.2 30 OVER 120 MAX. ±0.5				
2	Z180676	SEI	May/28/'18	TAK	GENERAL TOLERANCE.		TITLE MP-S01	SCALE 20:1	
1	Z161336	Y.O	Oct./27/'16	TAK	DWG. T.Yayoshi DATE 2014/12/16	UNIT mm		I-PEX	
0	Z141440	T.Y	Dec./16/'14		CHK. K.Yotsutani DATE 2014/12/17				
REV.	ECN	BY	DATE	APP.	APP. T.Takano DATE 2014/12/18	DWG. No.	3110	SIZE A3	
REVISION RECORD								SHEET 1/5	REV. 4

ITEMS	SPECIFICATION
RATING VOLTAGE	5 V AC (PER A CONTACT)
RATING AMPERAGE (FOR SIGNAL CONTACT)	0.7 A AC (PER A CONTACT)
OPERATING TEMPERATURE	248~358K(-40°C~85°C)
OPERATING HUMIDITY	85% MAX.(NON-CONDENDING)
CONTACT RESISTANCE (FOR SIGNAL CONTACT)	INITIAL : 25 mohm MAX. / AFTER TEST : 25 mohm MAX.
DURABILITY	10 CYCLES
CONTACT FORCE	0.30~0.95 N
COPLANARITY	0.08 MAX.
PRODUCT SPECIFICATION	PRS-2227
TEST REPORT	TR-16040
PACKING STANDARD	PST-18050
INSTRUCTION MANUAL	HIM-19018
APPEARANCE CRITERIA No.	QLS-A***

ANGLE	±2°	6 OVER 30 MAX.	±0.3	PROJECTION 	SERIES No. R0	CUSTOMER COPY
6 MAX.	±0.2	30 OVER 120 MAX.	±0.5			
GENERAL TOLERANCE.				TITLE MP-S01	SCALE	I-PEX
DWG.	DATE					
CHK.	DATE					
APP.	DATE					
				DWG. No.	3110	SIZE A3
				SHEET 2/5		REV. 4

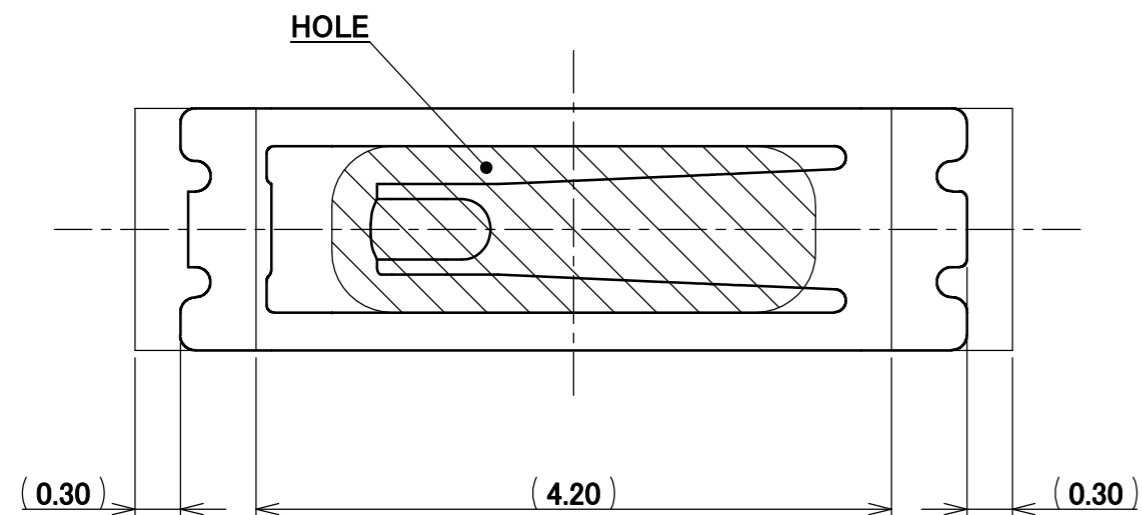


RECOMMENDED FOOTPRINT PATTERN LAYOUT

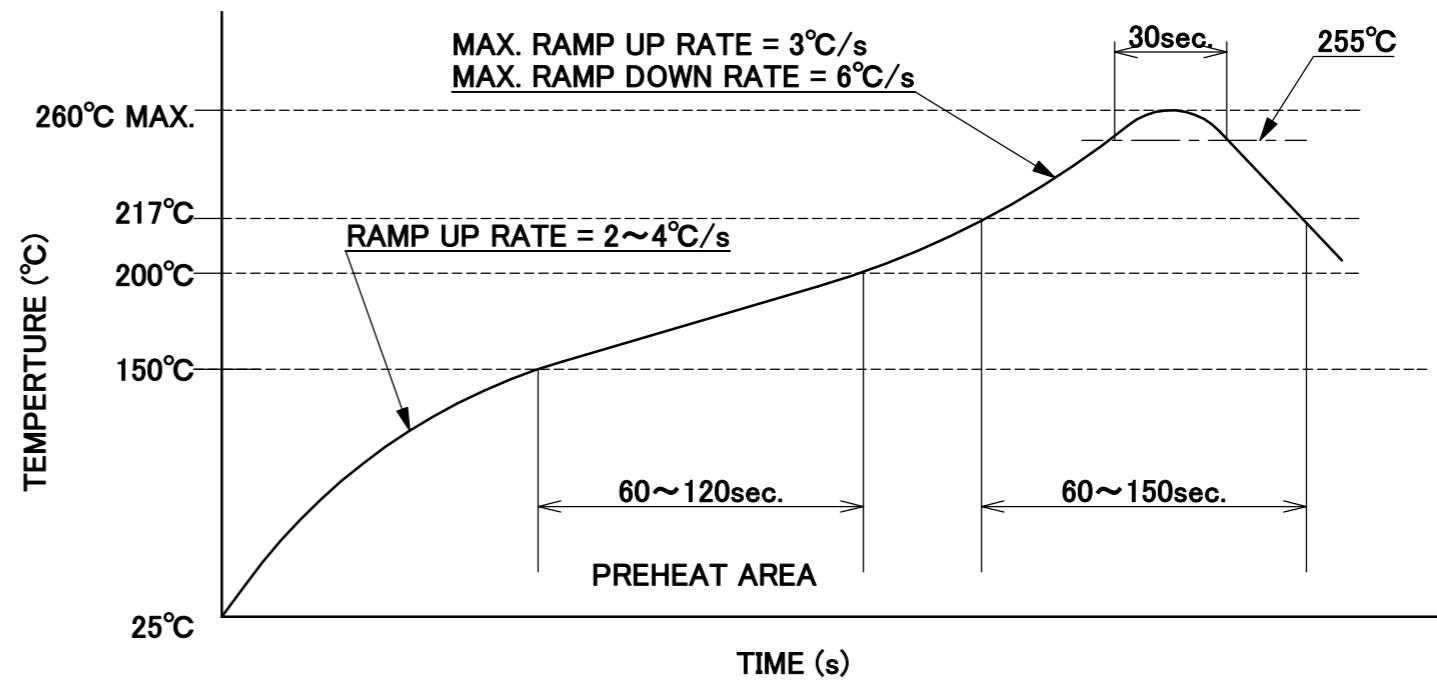


RECOMMENDED METAL MASK LAYOUT
METAL MASK THICKNESS : T=0.10mm

ANGLE	±2°	6 OVER 30 MAX.	±0.3	PROJECTION ⊕	SERIES No. R0	CUSTOMER COPY	
6 MAX.	±0.2	30 OVER 120 MAX.	±0.5				
GENERAL TOLERANCE.				TITLE		SCALE	I-PEX
DWG.	DATE			MP-S01		20:1	
CHK.	DATE					UNIT	
APP.	DATE					mm	
				DWG. No.	3110	SIZE	SHEET 3/5 REV. 4
					A3		



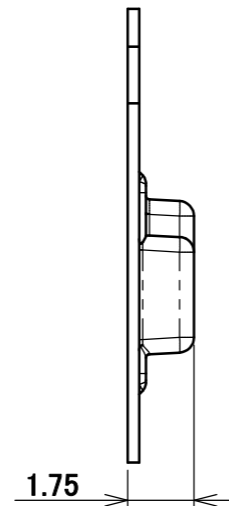
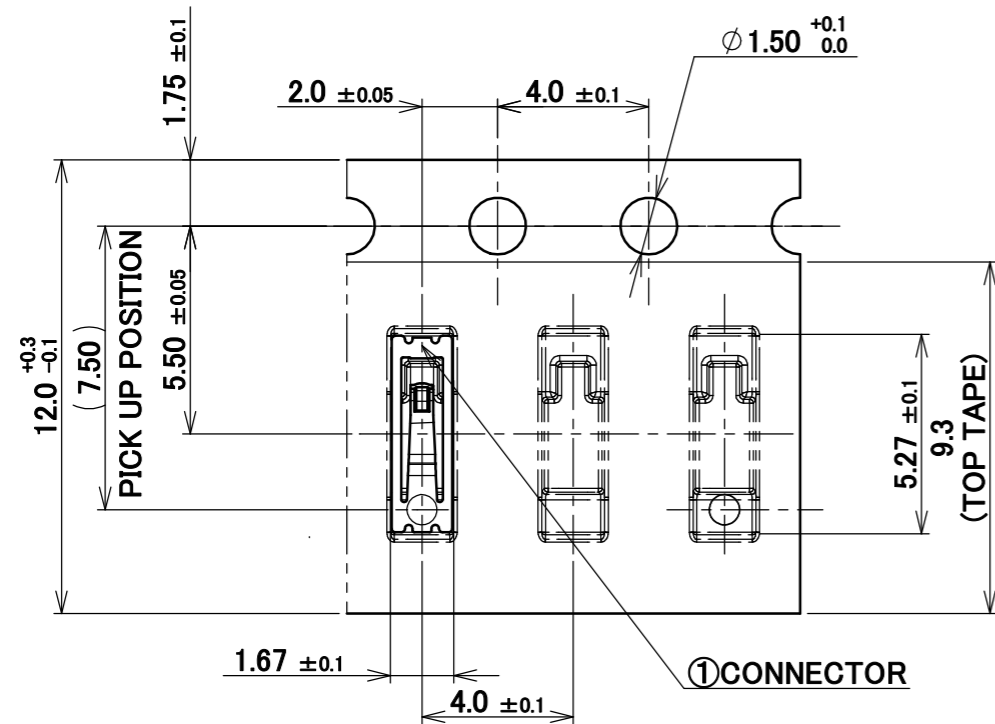
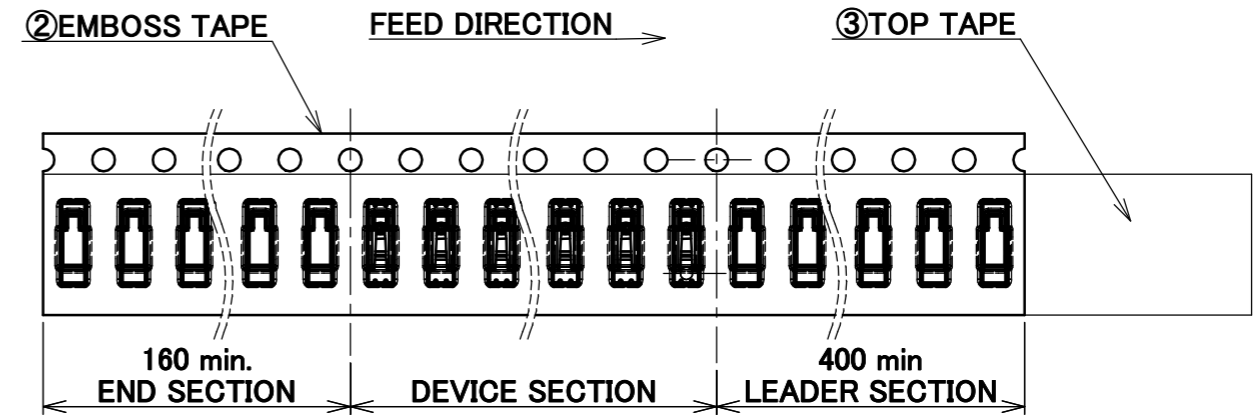
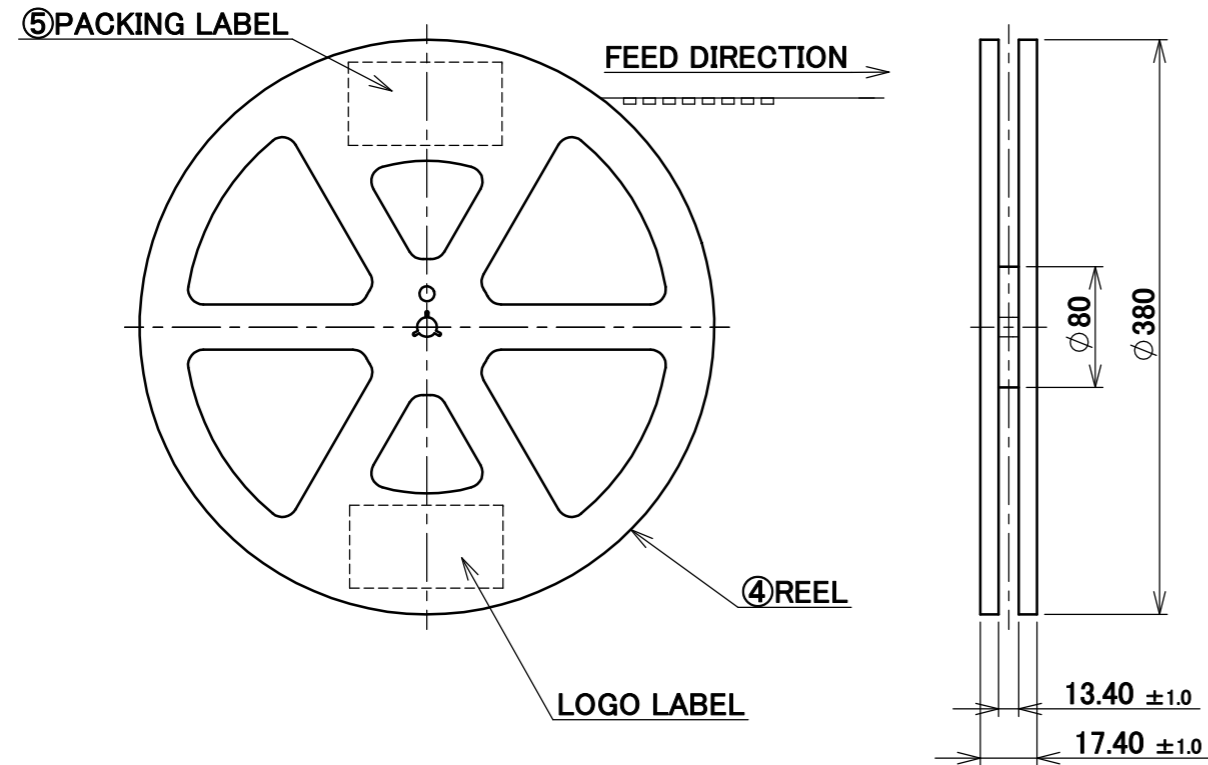
CONNECTOR ON RECOMMENDED FOOTPRINT PATTERN



REFLOW TEMPERATURE PROFILE
SENJU METAL INDUSTRY CO., LTD. : M705-SHF(Sn96.5 Ag3.0 Cu0.5)

ANGLE	±2°	6 OVER 30 MAX.	±0.3	PROJECTION 	SERIES No. R0	CUSTOMER COPY	
6 MAX.	±0.2	30 OVER 120 MAX.	±0.5				
GENERAL TOLERANCE.				TITLE		SCALE	
DWG.	DATE			MP-S01		20:1	
CHK.	DATE					UNIT	
APP.	DATE					mm	
				DWG. No.	3110	SIZE	
						A3	SHEET 4/5 REV. 4

PART NO.	QTY. PER EMBOSS REEL (PIECES / REEL)	QTY. PER PACKING CARTON (REELS / CARTON)
950472-0001	10000 / REEL	10000/REEL × 10/CARTON = 100000



NOTES.

3. TAPING SPECIFICATION FOLLOWS JIS C 0806 (IEC 60286-3).
4. MAKE EMPTY SECTION OF LEADER AND END ON EACH END OF THE TAPE.
5. TOP TAPE SHALL NOT STICK OUT FROM EMBOSS TAPE.
6. TOP TAPE SHALL NOT COVER FEED HOLE.

NO.	DISCRIPTION	MATERIAL	FINISH , REMARKS
5	PACKING LABEL	-	-
4	REEL	PS	ANTI-STATIC TYPE BLACK
3	TOP TAPE	PET t=0.062 TRANSPARENCY	ANTI-STATIC TYPE
2	EMBOSS TAPE	PS t=0.3 TRANSPARENCY	ANTI-STATIC TYPE
1	CONNECTOR	-	-

ANGLE	±2°	6 OVER 30 MAX.	±0.3	PROJECTION ⊕	SERIES No. R0	CUSTOMER COPY
6 MAX.	±0.2	30 OVER 120 MAX.	±0.5			
GENERAL TOLERANCE.				TITLE	SCALE	I-PEX
DWG.	DATE			MP-S01	5:1	
CHK.	DATE				UNIT	
APP.	DATE			DWG. No.	mm	
				3110	SIZE	SHEET 5/5 REV. 4
					A3	