

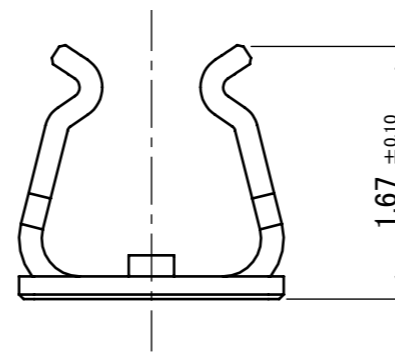
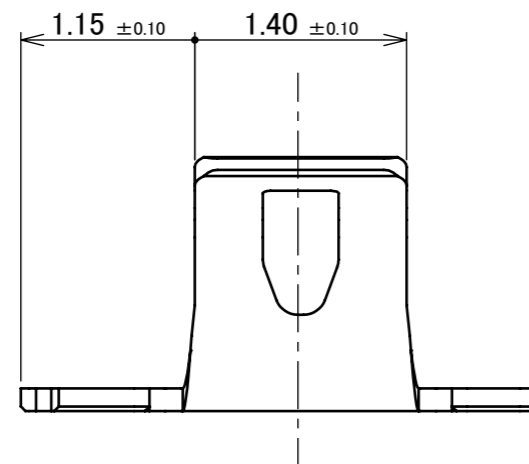
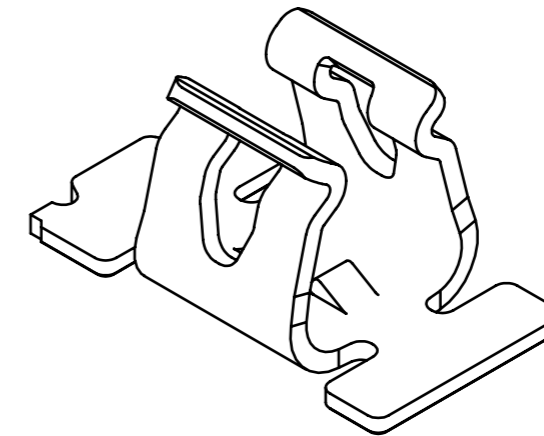
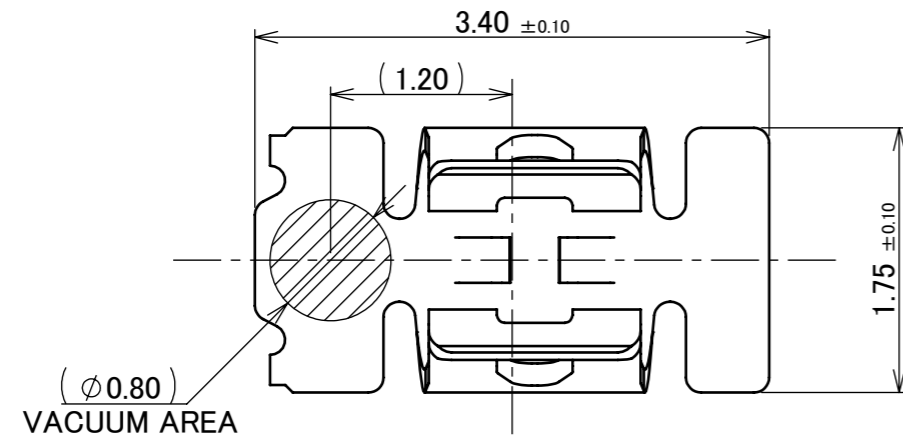
PART NO.
3224-0001



Halogen Free



RoHS Compliant



1	MP-A04	PHOSPHOR BRONZE	CONTACT PART Sn 2.00 μm MIN. OVER Ni 1.00 μm MIN. SOLDERING PART Sn 1.00 μm MIN.OVER Ni 0.50 μm MIN.
NO.	DESCRIPTION	MATERIAL	FINISH , REMARKS

8	Z231552	H.T	2024/01/11	Yufu	ANGLE	±2°	6 OVER 30 MAX.	±0.3	PROJECTION ⊕	SERIES No. R0	CUSTOMER COPY		
7	Z230873	Y.I	2023/07/28	M.T	6 MAX.	±0.2	30 OVER 120 MAX.	±0.5					
6	Z221060	H.T	2022/09/29	Y.H	GENERAL TOLERANCE.				TITLE MP-A04	SCALE 20:1	UNIT mm	I-PEX	
5	Z211214	H.T	2021/10/05	M.T	DWG.	DATE		S.Taguchi					2015/11/20
4	Z211165	H.T	2021/09/24	M.T	CHK.	K.Yotsutani							
3	Z180872	S.K	2018/09/20	Ken	APP.	T.Takano		DWG. No.	3224	SIZE A3	SHEET 1/7	REV. 8	
REV.	ECN	BY	DATE	APP.	REVISION RECORD								

PART NO.

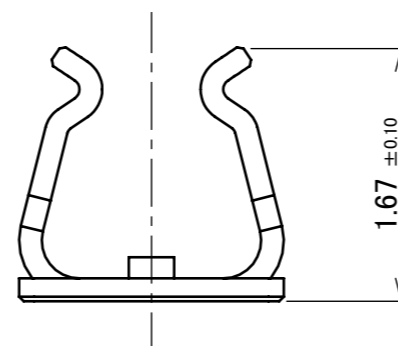
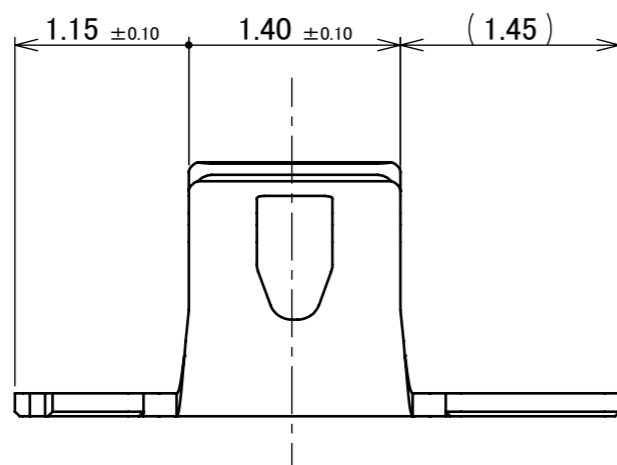
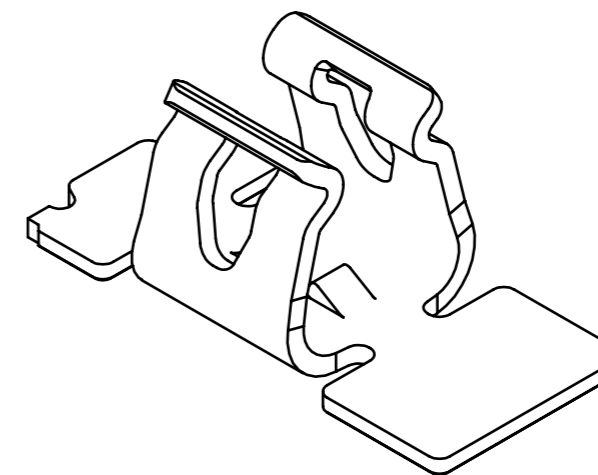
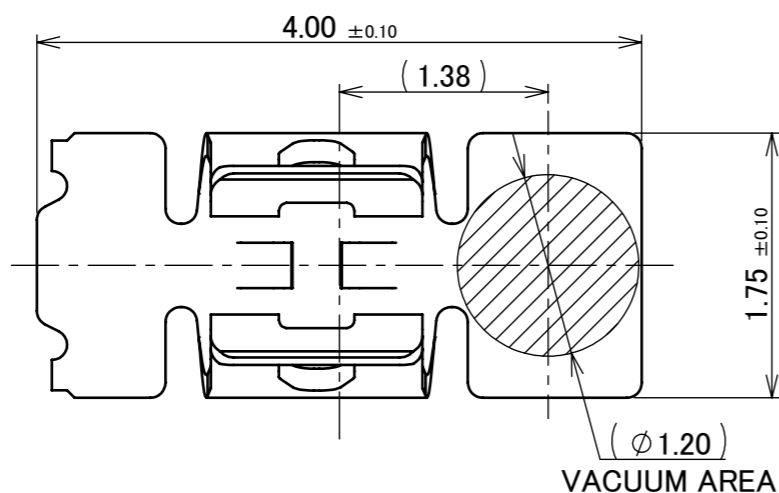
3224-0003



Halogen Free

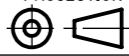


RoHS Compliant

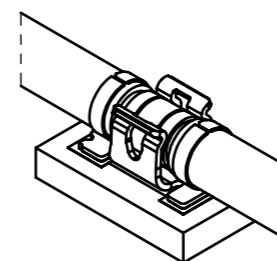
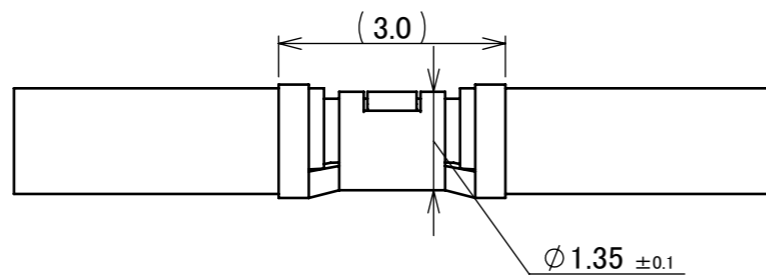


ANGLE	±2°	6 OVER 30 MAX.	±0.3	PROJECTION ⊕	SERIES No. R0	CUSTOMER COPY		
6 MAX.	±0.2	30 OVER 120 MAX.	±0.5					
GENERAL TOLERANCE.				TITLE MP-A04	SCALE 20:1	UNIT I-PEX		
DWG.	DATE							
CHK.								
APP.								
				DWG. No.	3224	SIZE A3	SHEET 2/7	REV. 8

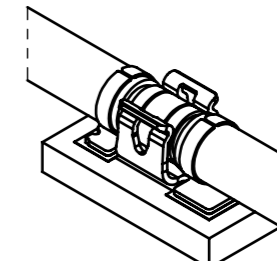
ITEMS	SPECIFICATION
APPLICABLE CONNECTOR PART No.	<ul style="list-style-type: none"> •CABLE CLAMP (3mm) FOR Φ 1.37 COAXIAL CABLE (P/N: 3223-0302) •CABLE CLAMP (6mm) FOR Φ 1.37 COAXIAL CABLE (P/N: 3223-0602) •CABLE JACKET (OUTSIDE DIAMETER Φ 1.37\pm0.08) OF Φ 1.37 COAXIAL CABLE
OPERATING TEMPERATURE	233~358K(-40°C~+85°C)
OPERATING HUMIDITY	85% MAX.(NON-CONDENSING)
CONTACT RESISTANCE	INITIAL : 70mohm MAX. / AFTER TEST : 70mohm MAX.
DURABILITY	5 CYCLES
MATING FORCE (INITIAL / AFTER TEST)	INITIAL : 25N MAX. / AFTER TEST : 25N MAX.
UNMATING FORCE (INITIAL / AFTER TEST)	INITIAL : 3N MIN. / AFTER TEST : 2N MIN.
PRODUCT SPECIFICATION	PRS-2235
TEST REPORT	TR-16134
PACKING STANDARD	PST-15066
INSTRUCTION MANUAL	HIM-16012
APPEARANCE CRITERIA No.	QLS-A***

ANGLE	$\pm 2^\circ$	6 OVER 30 MAX.	± 0.3	PROJECTION 	SERIES No. R0	CUSTOMER COPY		
6 MAX.	± 0.2	30 OVER 120 MAX.	± 0.5					
GENERAL TOLERANCE.				TITLE MP-A04	SCALE -	I-PEX		
DWG.	DATE							
CHK.								
APP.								
				DWG. No.	3224	SIZE A3	SHEET 3/7	REV. 8

① ϕ 1.37 COAXIAL CABLE WITH 3mm CABLE CLAMP (P/N : 3223-0302)

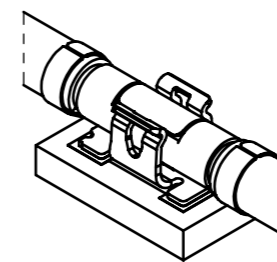
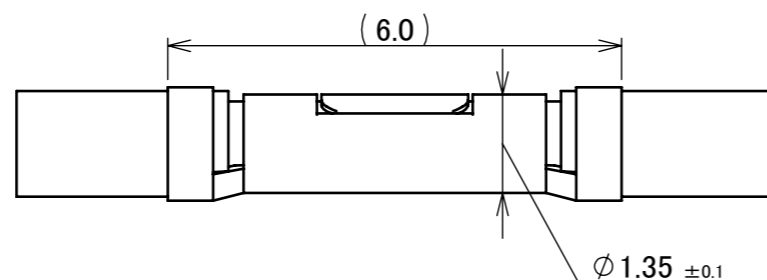


3224-0001

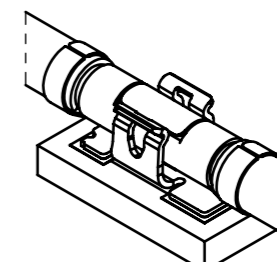


3224-0003

② ϕ 1.37 COAXIAL CABLE WITH 6mm CABLE CLAMP (P/N : 3223-0602)

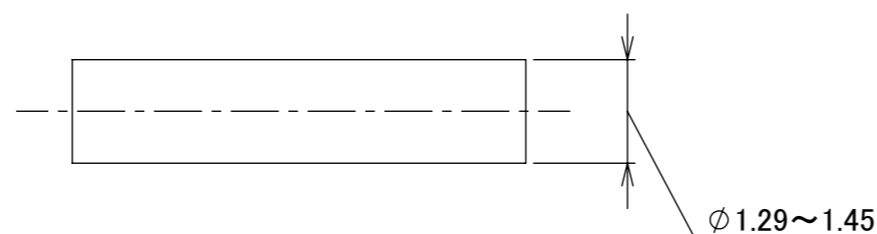


3224-0001

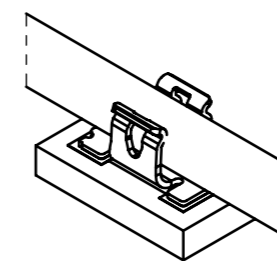


3224-0003

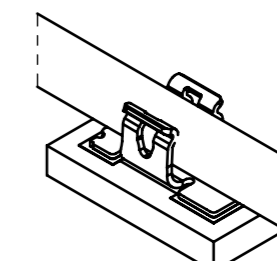
③ ϕ 1.37 COAXIAL CABLE



APPLICABLE CABLE



3224-0001

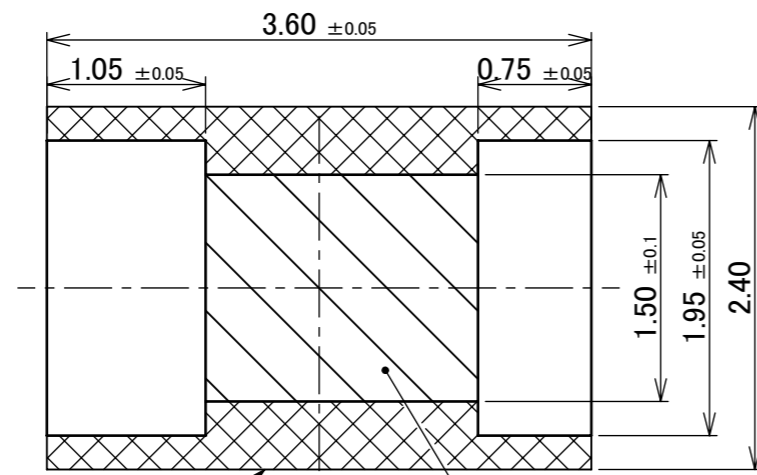


3224-0003

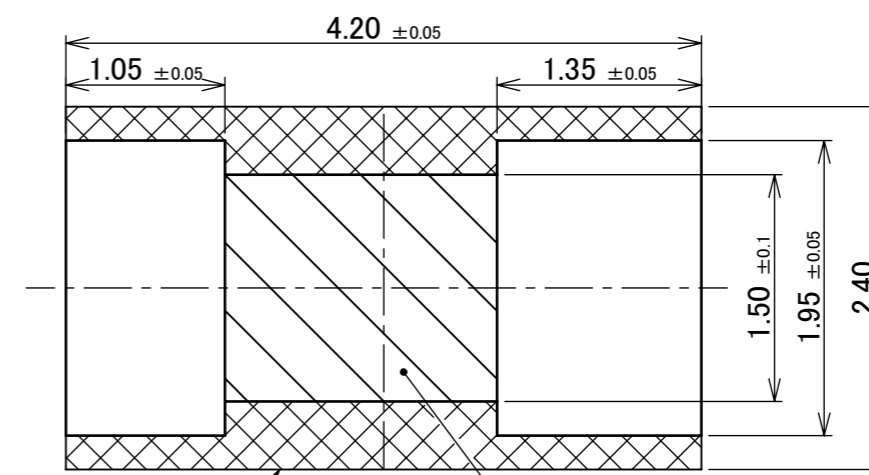
MATING CONDITION
(S = 6/1)

NOTE.
1. ONLY A SIMILAR CABLE IS REPLACEABLE.

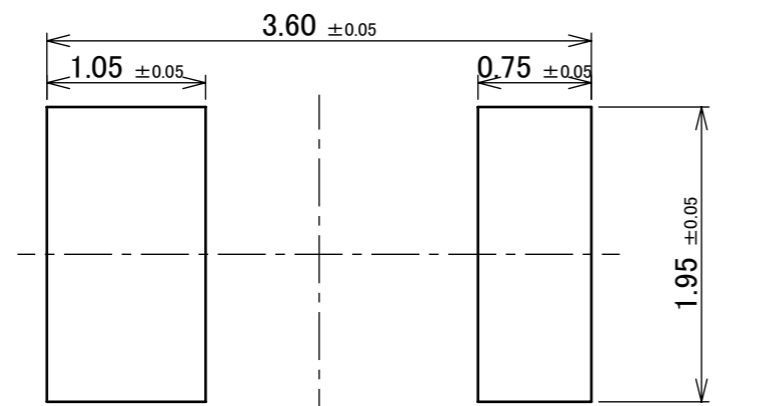
ANGLE	$\pm 2^\circ$	6 OVER 30 MAX.	± 0.3	PROJECTION 	SERIES No. R0	CUSTOMER COPY		
	6 MAX.	± 0.2	30 OVER 120 MAX.					± 0.5
GENERAL TOLERANCE.				TITLE MP-A04	SCALE 10:1	I-PEX		
DWG.	DATE							
CHK.								
APP.								
				DWG. No.	3224	SIZE A3	SHEET 4/7	REV. 8



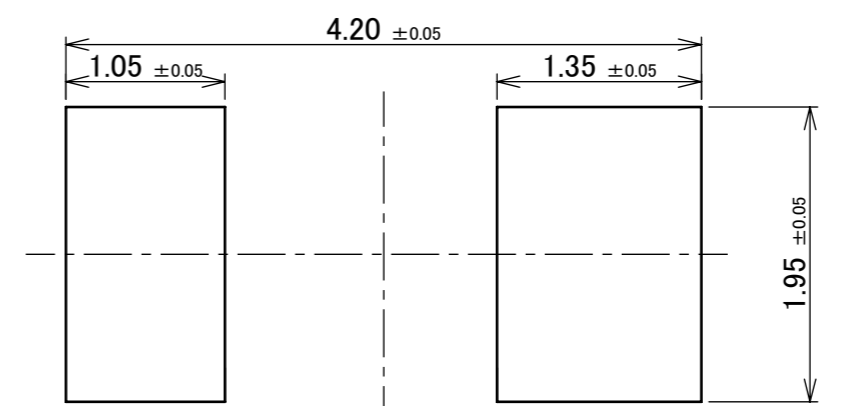
SEE NOTE. 3
 SEE NOTE. 2
RECOMMENDED FOOTPRINT PATTERN
3224-0001



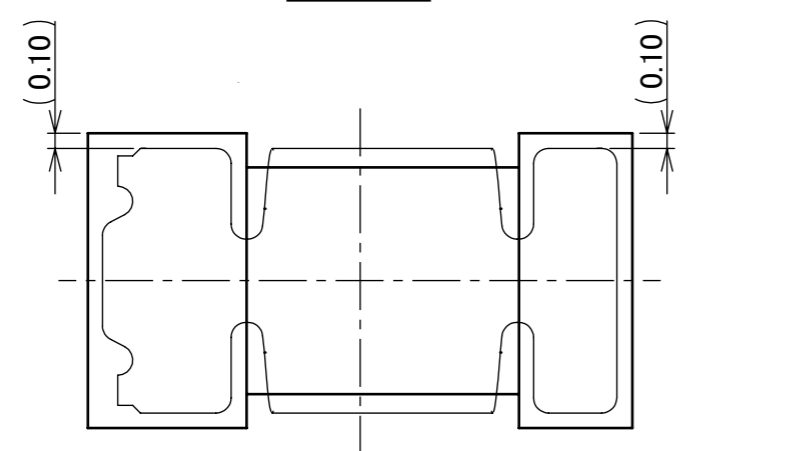
SEE NOTE. 3
 SEE NOTE. 2
RECOMMENDED FOOTPRINT PATTERN
3224-0003



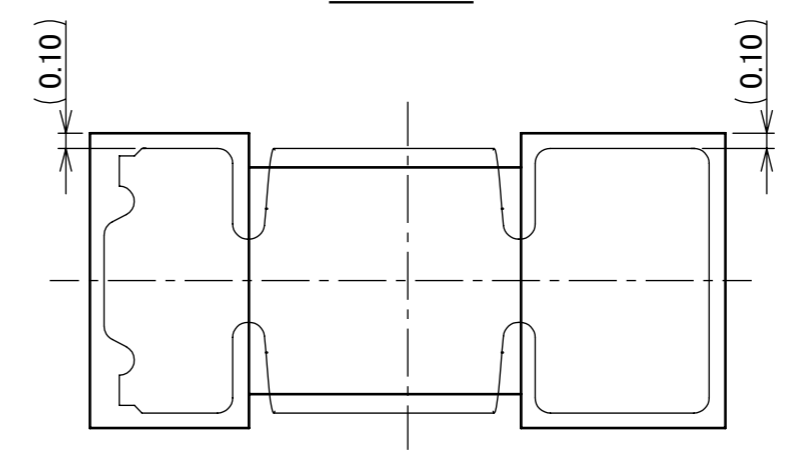
METAL MASK
3224-0001 **THICKNESS: 0.10mm**



METAL MASK
3224-0003 **THICKNESS: 0.10mm**



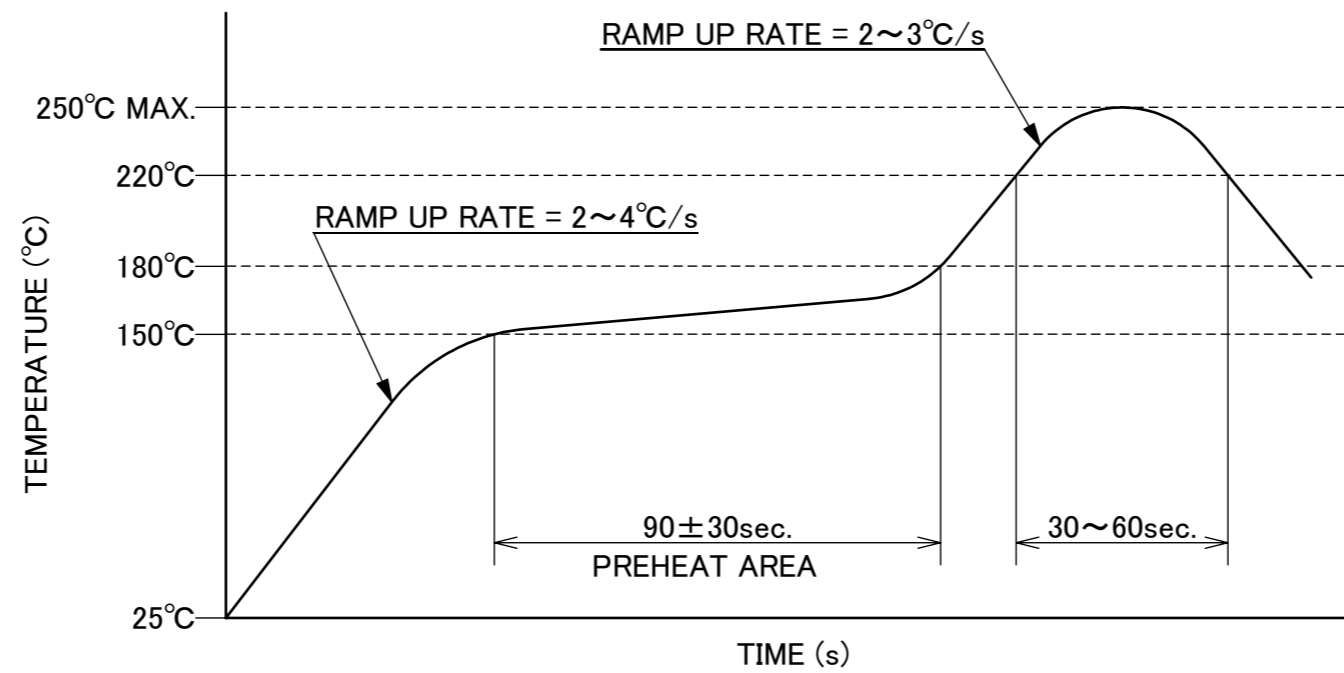
CONNECTOR ON RECOMMENDED FOOTPRINT PATTERN
3224-0001



CONNECTOR ON RECOMMENDED FOOTPRINT PATTERN
3224-0003

- NOTES.
 2. NO GROUND, SIGNAL, AND RESIST IN THIS AREA.
 3. DO NOT MOUNT ANOTHER COMPONENT IN THIS AREA.

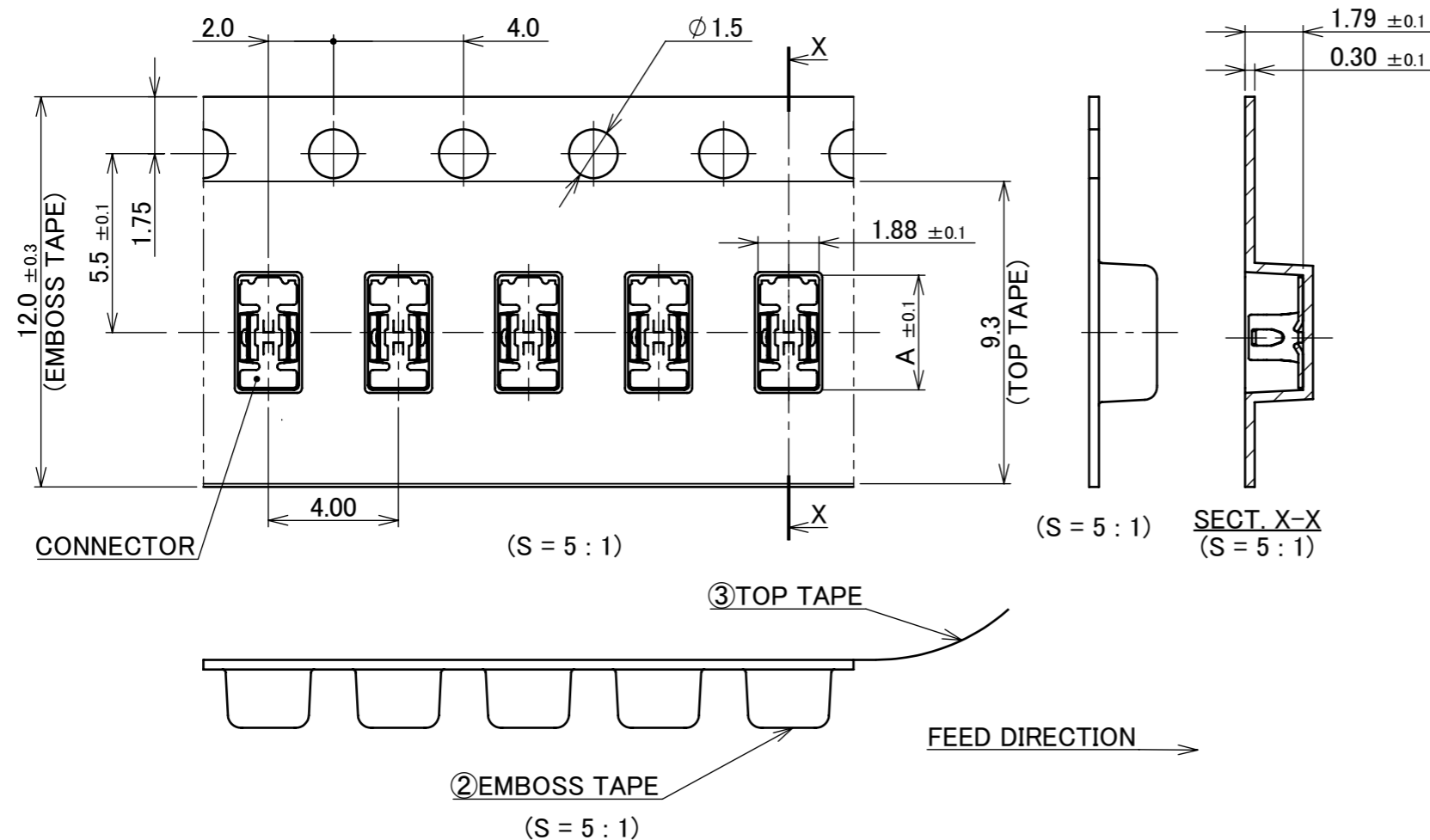
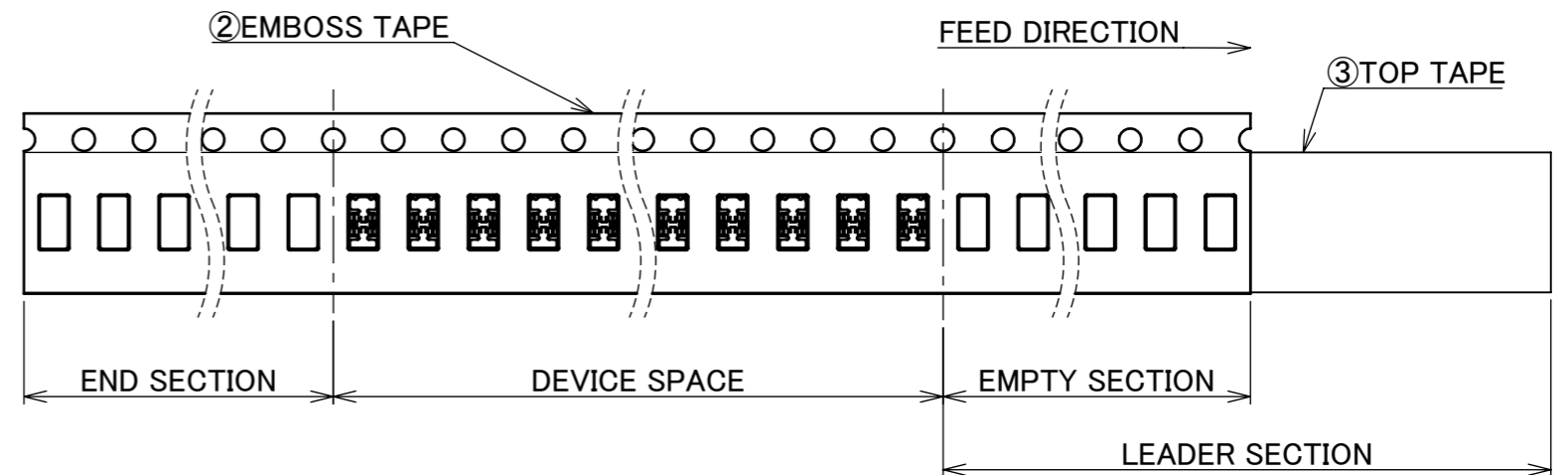
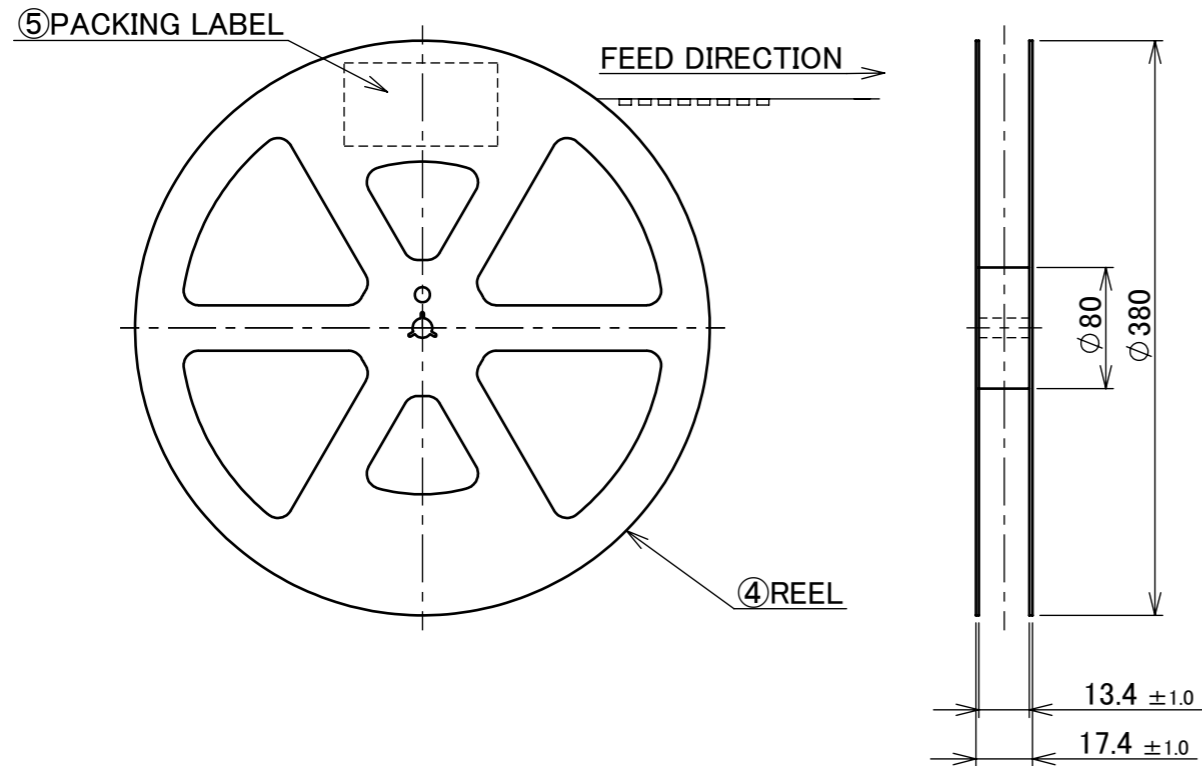
ANGLE	±2°	6 OVER 30 MAX.	±0.3	PROJECTION 	SERIES No. R0	CUSTOMER COPY		
	6 MAX.	±0.2	30 OVER 120 MAX.					±0.5
GENERAL TOLERANCE.				TITLE	SCALE 20:1 UNIT mm I-PEX			
DWG.	DATE			MP-A04				
CHK.								
APP.				DWG. No.				3224



REFLOW TEMPERATURE PROFILE
 SENJU METAL INDUSTRY CO., LTD. : M705-SHF(Sn96.5 Ag3.0 Cu0.5)

ANGLE	±2°	6 OVER 30 MAX.	±0.3	PROJECTION 	SERIES No. R0	CUSTOMER COPY		
6 MAX.	±0.2	30 OVER 120 MAX.	±0.5					
GENERAL TOLERANCE.				TITLE MP-A04	SCALE -	I-PEX		
DWG.	DATE							
CHK.								
APP.								
				DWG. No.	3224	SIZE A3	SHEET 6/7	REV. 8

PART NO.	A	QTY. PER EMBOSS REEL (PIECES / REEL)	QTY. PER PACKING CARTON (REELS / CARTON)
3224-0001	3.53	10,000 / REEL	10 REELS / CARTON = 100,000
3224-0003	4.13		



NOTES.

- TAPING SPECIFICATION FOLLOWS JIS C 0806 (IEC 60286-3).
- MAKE EMPTY SECTION OF LEADER AND END ON EACH END OF THE TAPE.
- TOP TAPE SHALL NOT STICK OUT FROM EMBOSS TAPE.
- TOP TAPE SHALL NOT COVER FEED HOLE.

NO.	DESCRIPTION	MATERIAL	FINISH, REMARKS
5	PACKING LABEL	-	-
4	REEL	PS	WHITE
3	TOP TAPE	PET TRANSPARENCY	-
2	EMBOSS TAPE	PS TRANSPARENCY	-

ANGLE	±2°	6 OVER 30 MAX.	±0.3	PROJECTION	SERIES No.	CUSTOMER COPY			
6 MAX.	±0.2	30 OVER 120 MAX.	±0.5		R0	I-PEX			
GENERAL TOLERANCE.									TITLE
DWG.	DATE			MP-A04		UNIT	mm		
CHK.						SIZE		A3	
APP.				DWG. No. 3224		SHEET	7/7		8