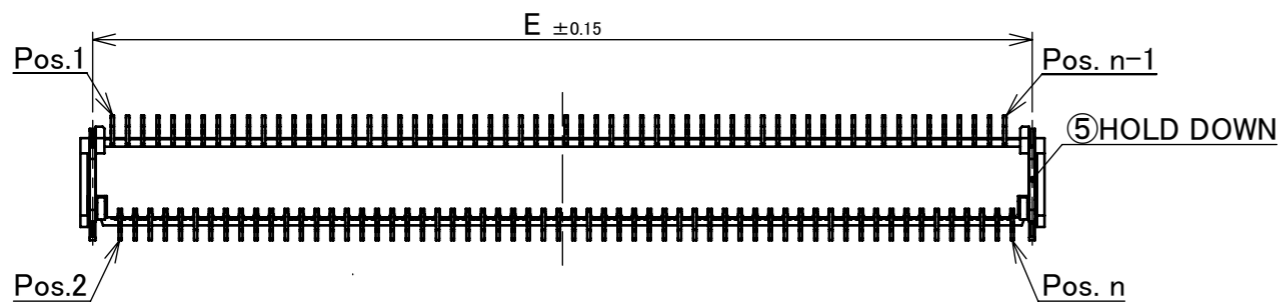
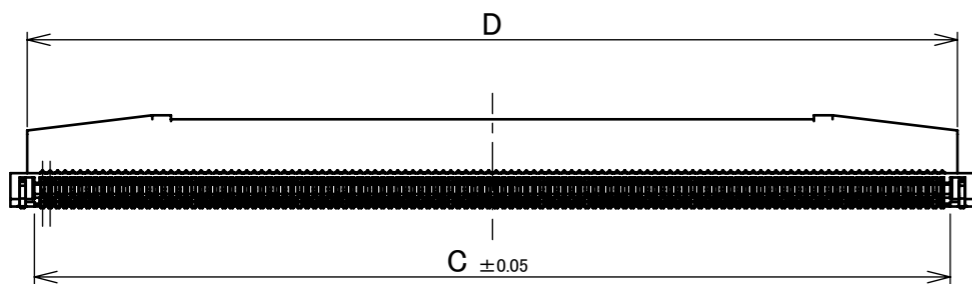
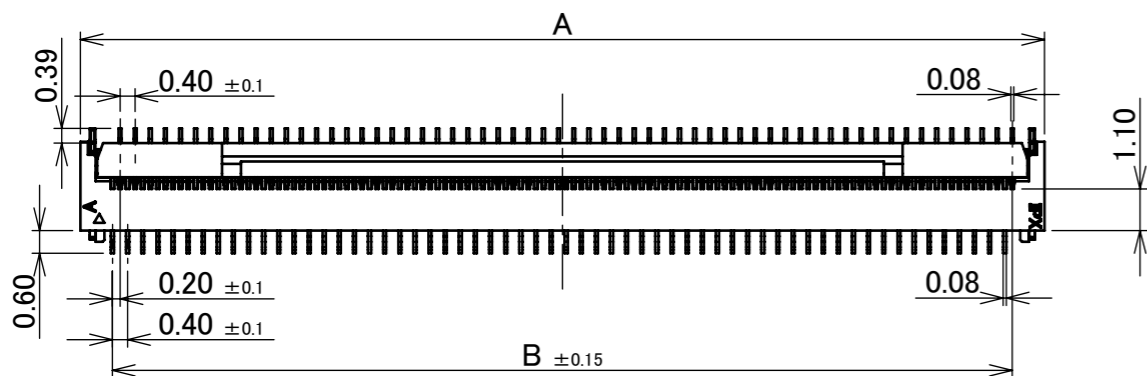


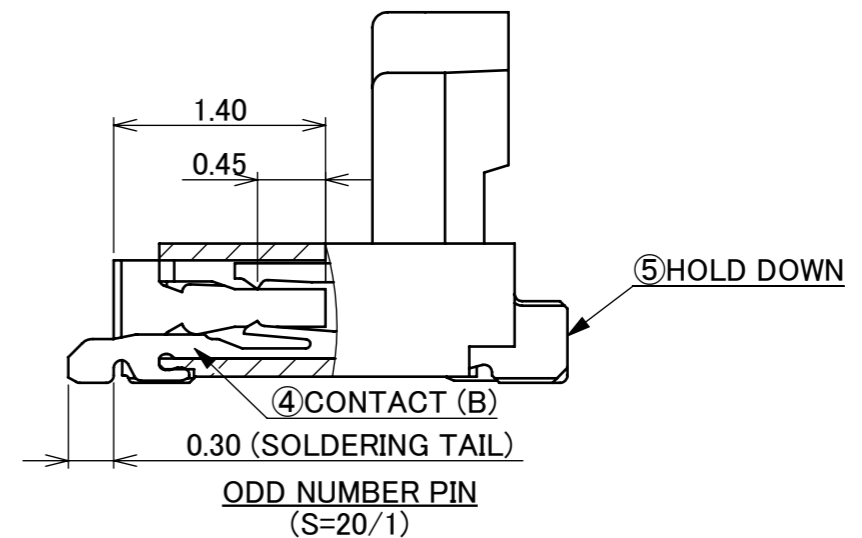
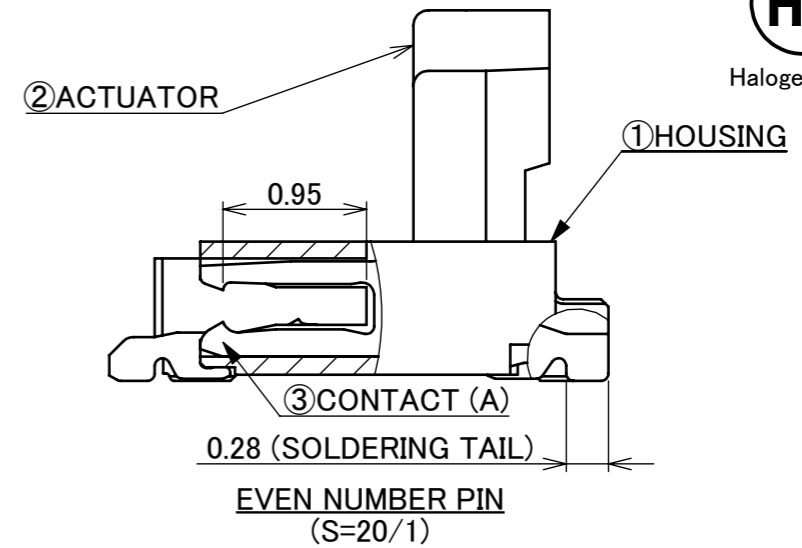
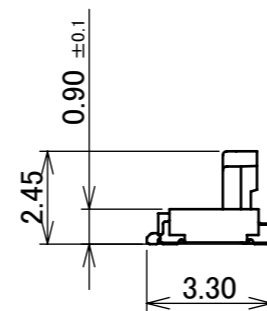
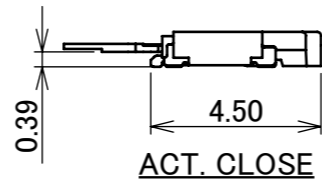
Recommended P/N 20617-\*\*\*E-01

PART NO.	Pos.	A	B	C	D	E
20617-080E-01	80	17.50	15.80	16.22	16.60	16.85
20617-100E-01	100	21.50	19.80	20.22	20.60	20.85
◆20617-110E-01	110	23.50	21.80	22.22	22.60	22.85
20617-120E-01	120	25.50	23.80	24.22	24.60	24.85

◆MARK MEANS NOT AVAILABLE.



NOTES.  
1. CONTACT POINT : TOP AND BOTTOM CONTACT.



NO.	DISCRIPTION	MATERIAL	FINISH , REMARKS
5	HOLD DOWN	BRASS	SOLDERING AREA : Au 0.03 μ m MIN. OVER Ni 1.00 μ m MIN.
4	CONTACT(B)	PHOSPHOR BRONZE	CONTACT AREA&SOLDERING AREA : Au 0.03 μ m MIN. OVER Ni 1.00 μ m MIN.
3	CONTACT(A)	PHOSPHOR BRONZE	CONTACT AREA&SOLDERING AREA : Au 0.03 μ m MIN. OVER Ni 1.00 μ m MIN.
2	ACTUATOR	LCP	UL94V-0,BLACK
1	HOUSING	LCP	UL94V-0,BEIGE

REV.	ECN	BY	DATE	APP.	APP.	REVISION RECORD	PROJECTION	SERIES No.	TITLE	SCALE	SHEET	REV.
11	Z220607	S.Sh	May/31/'22	H.I	ANGLE	±2° 6 OVER 30 MAX. ±0.3		R6	MINIFLEX® 2-BF ASS'Y	5:1	A3	11
10	Z200959	S.Sh	Sept./14/'20	Y.S	6 MAX. ±0.2 30 OVER 120 MAX. ±0.5							
9	Z200818	M.M	Aug./06/'20	Y.S	GENERAL TOLERANCE.		TITLE		CUSTOMER COPY			
8	Z200585	M.M	June/08/'20	Y.S	DWG.	DATE	MINIFLEX® 2-BF ASS'Y		I-PEX			
7	Z191444	M.M	Nov./05/'19	H.I	M.Ishimaru 2014/01/24		ASS'Y		mm			
6	Z191238	S.Sh	Sept./17/'19	H.I	CHK.	J.Tateishi	DWG. No. 20617		SIZE SHEET REV.			
					APP.	E.Kawabe	20617		A3 1/5 11			

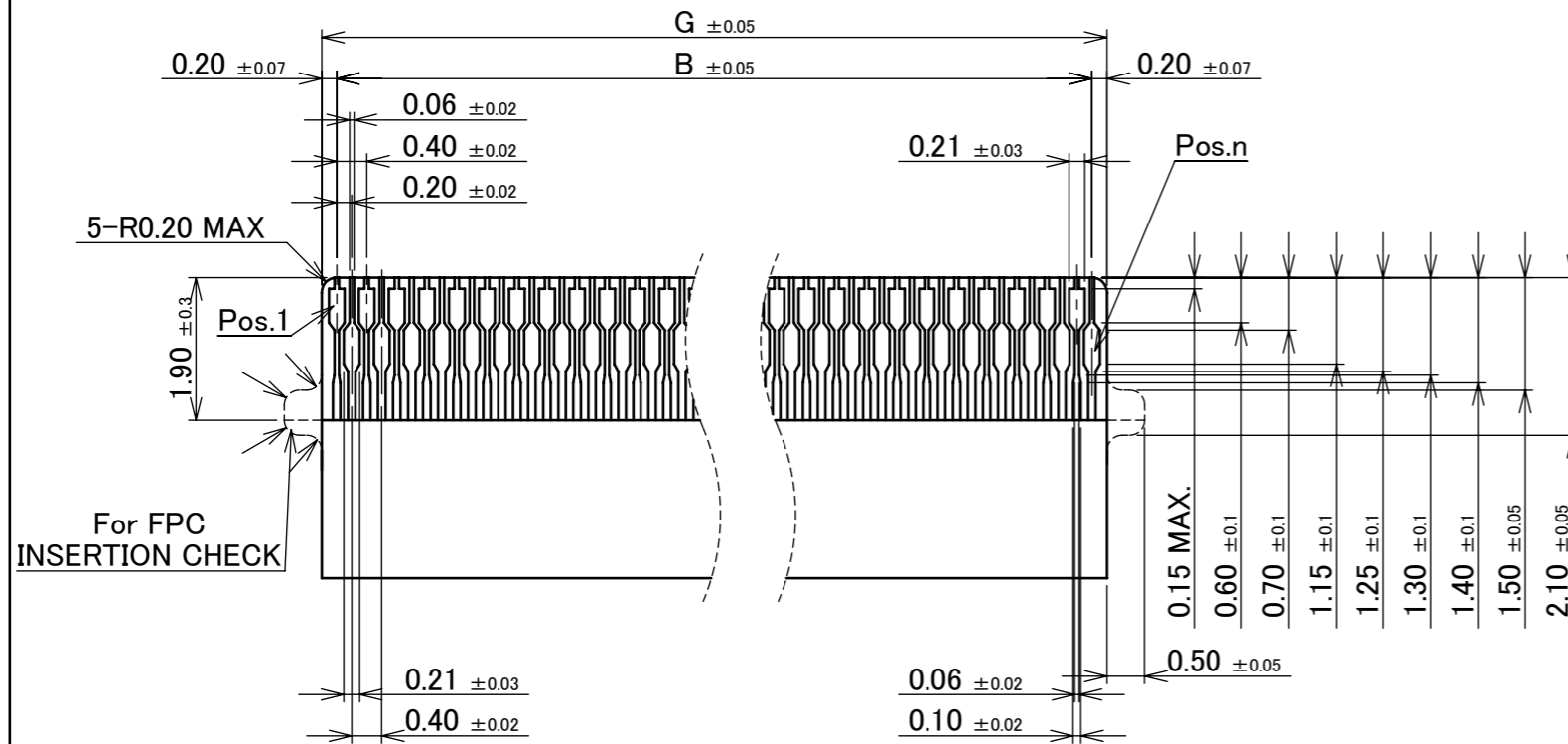
ITEMS	SPECIFICATION
RATING VOLTAGE	50V AC (PER CONTACT PIN)
RATING AMPERAGE	0.2A DC (PER CONTACT PIN)
OPERATING TEMPERATURE	233~358K(-40°C~+85°C)
OPERATING HUMIDITY	85% MAX.(NON-CONDENSING)
CONTACT RESISTANCE	INITIAL : 100mohm MAX. / AFTER TEST : $\triangleleft$ 40mohm MAX.
INSULATION RESISTANCE	INITIAL : 100Mohm MIN. / AFTER TEST : 100Mohm MIN.
DIELECTRIC WITHSTANDING VOLTAGE	AC150V 1min
DURABILITY	20 CYCLES
ACTUATOR LOCKING FORCE (INITIAL / 20TH CYCLES)	INITIAL: 0.2N (20.4gf) $\times$ n MAX. 20 CYCLES : 0.2N (20.4gf) $\times$ n MAX.
ACTUATOR UNLOCKING FORCE (INITIAL / 20TH CYCLES)	INITIAL: 0.014N (1.4gf) $\times$ n MIN. 20 CYCLES : 0.014N (1.4gf) $\times$ n MIN.
FPC RETENTION FORCE (INITIAL / 20TH CYCLES)	INITIAL: 0.2N (20.4gf) $\times$ n MIN. 20 CYCLES : 0.2N (20.4gf) $\times$ n MIN.
COPLANARITY	0.10 MAX.
PRODUCT SPECIFICATION	PRS-2319
TEST REPORT	TR-16128
PACKING STANDARD	PST-16121
INSTRUCTION MANUAL	HIM-16031
APPEARANCE CRITERIA No.	QLS-A***

※ "n" IS THE NUMBER OF PIN

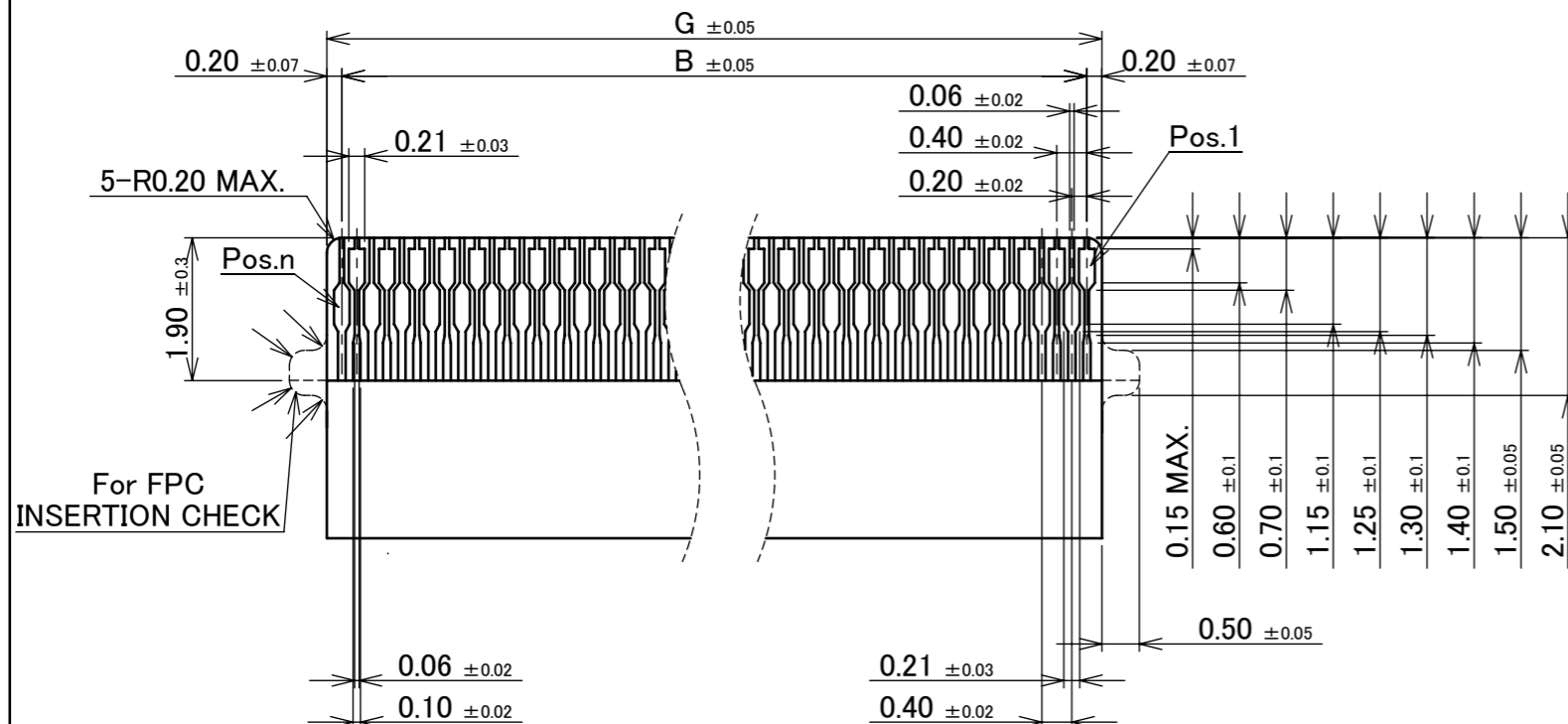
ANGLE	$\pm 2^\circ$	6 OVER 30 MAX.	$\pm 0.3$	PROJECTION 	SERIES No. R6	CUSTOMER COPY	
6 MAX.	$\pm 0.2$	30 OVER 120 MAX.	$\pm 0.5$				
GENERAL TOLERANCE.				TITLE MINIFLEX <sup>®</sup> 2-BF ASS'Y	SCALE	<b>I-PEX</b>	
DWG.	DATE						
CHK.							
APP.							
DWG. No.	20617			UNIT mm	SIZE A3	SHEET 2/5	REV. 11

PART No.	Pos.	B	F	G
20617-080E-01	80	15.80	17.00	16.20
20617-100E-01	100	19.80	21.00	20.20
◆20617-110E-01	110	21.80	23.00	22.20
20617-120E-01	120	23.80	25.00	24.20

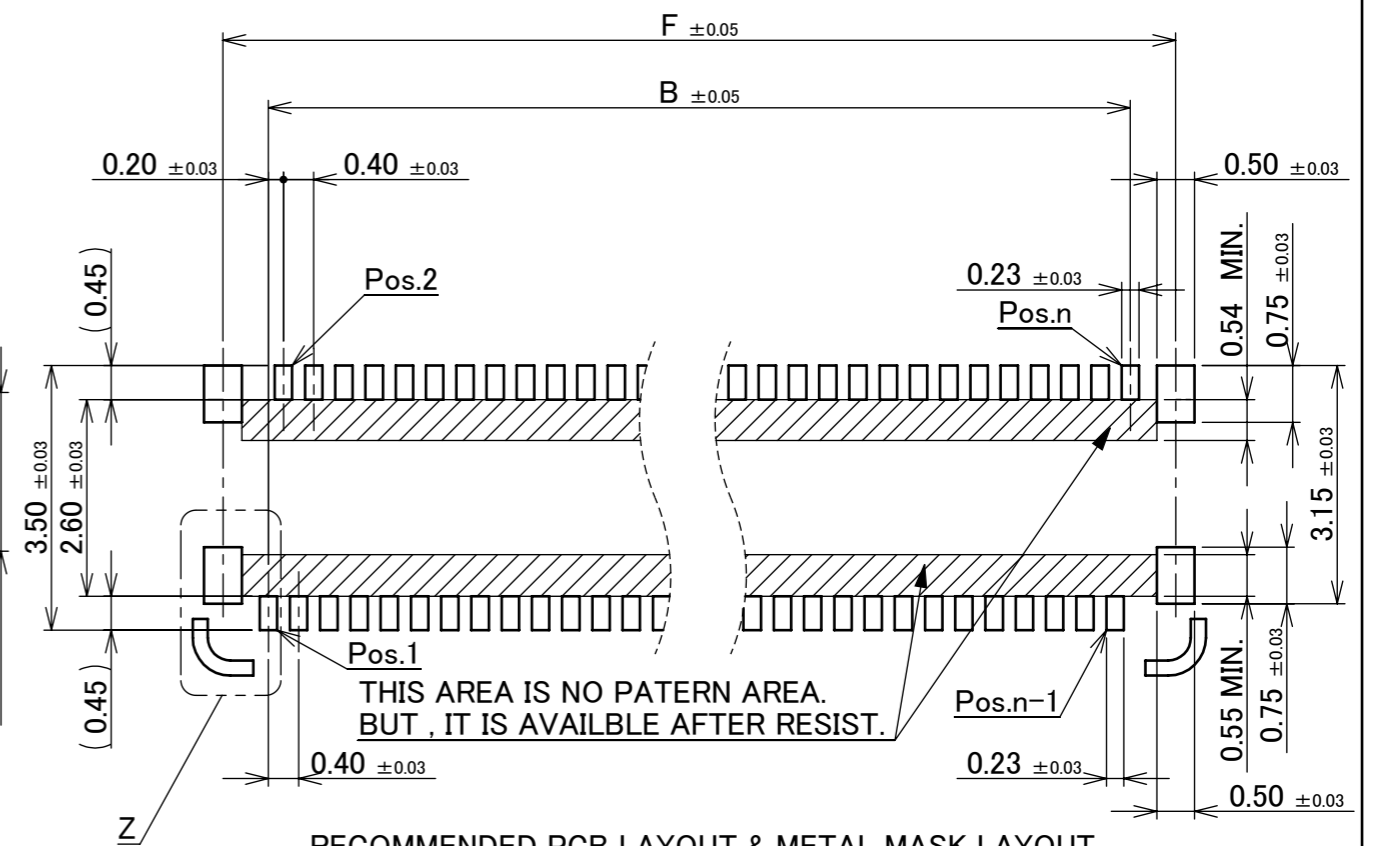
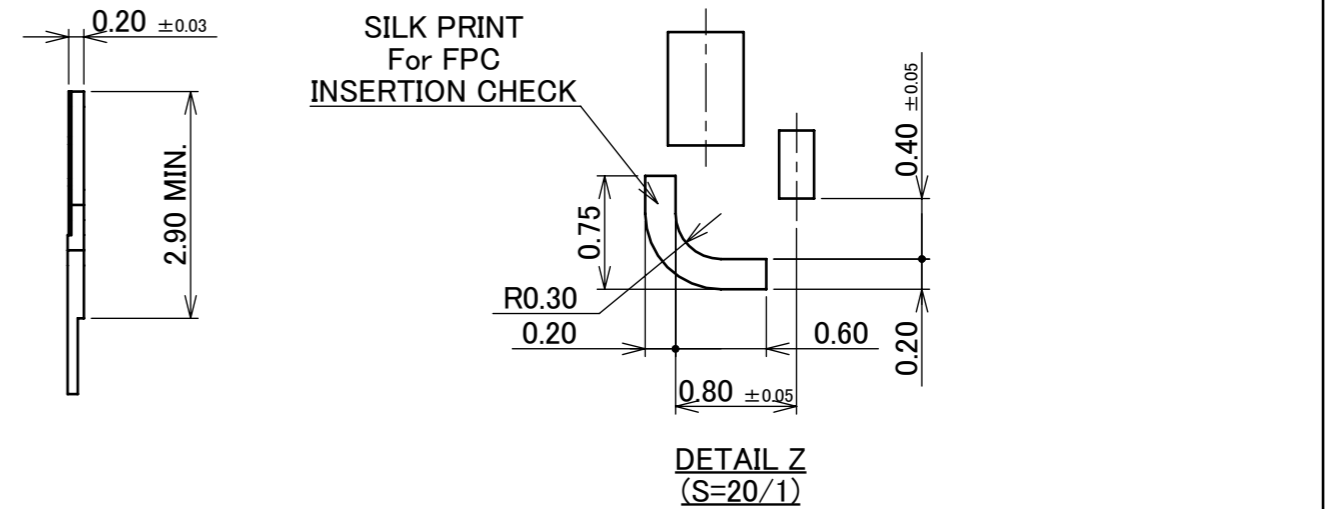
◆ MARK MEANS NOT AVAILABLE.



RECOMMENDED FPC LAYOUT (For TOP CONTACT)

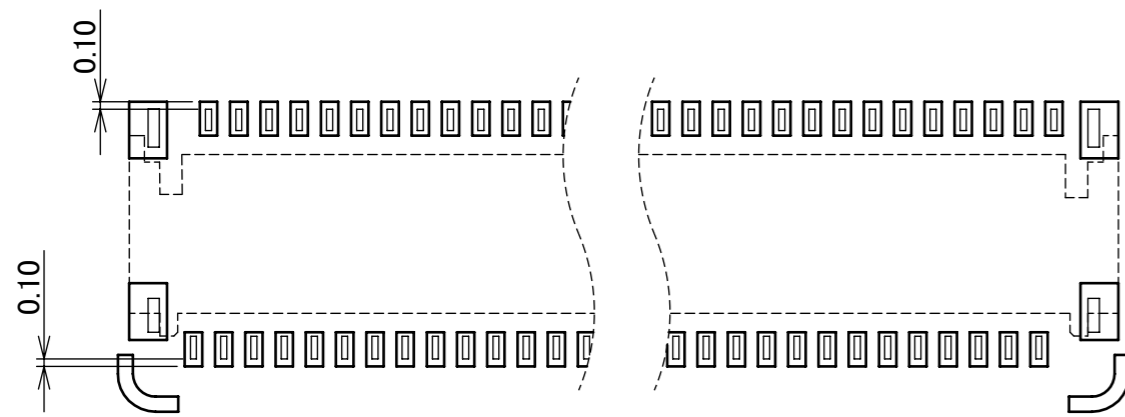


RECOMMENDED FPC LAYOUT (For BOTTOM CONTACT)

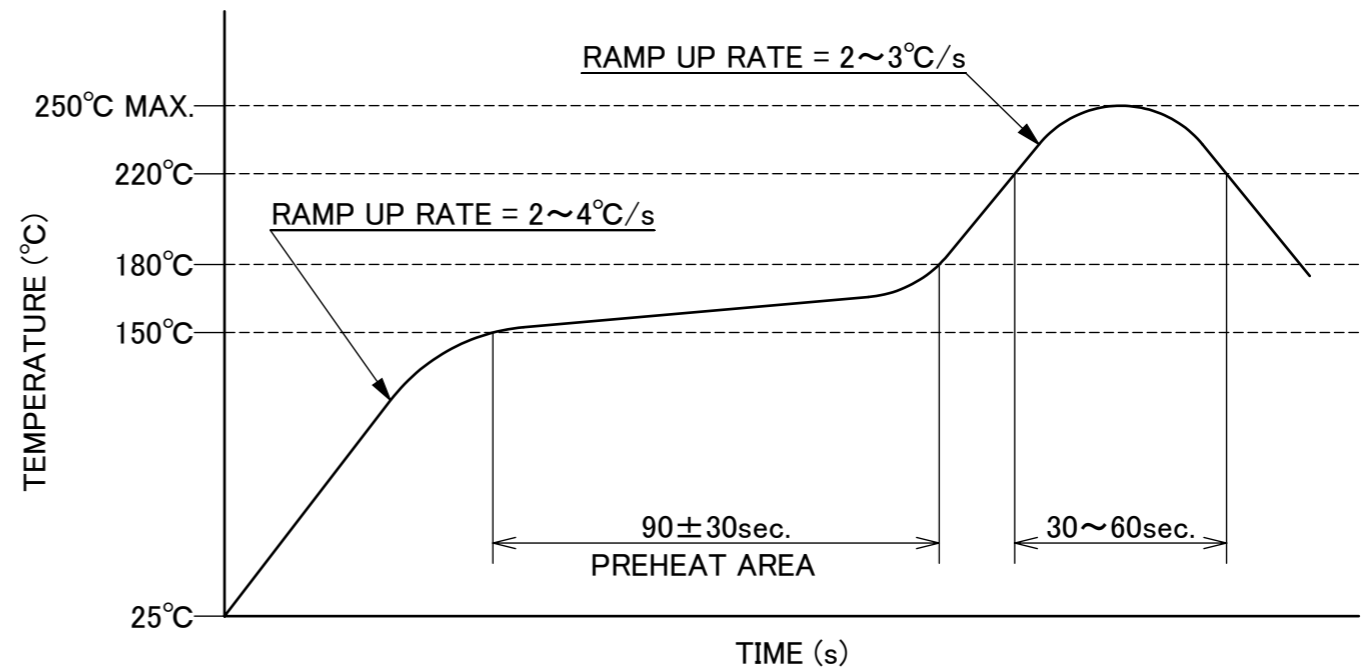


RECOMMENDED PCB LAYOUT & METAL MASK LAYOUT  
METAL MASK THICKNESS : t=0.12mm

ANGLE	±2°	6 OVER 30 MAX.	±0.3	PROJECTION	SERIES No.	CUSTOMER COPY		
6 MAX.	±0.2	30 OVER 120 MAX.	±0.5	⊕	R6	SCALE	<b>I-PEX</b>	
GENERAL TOLERANCE.						TITLE		5:1
DWG.	DATE			MINIFLEX® 2-BF ASS'Y		UNIT		mm
CHK.				DWG. No. 20617		SIZE		A3
APP.						SHEET	3/5	
						REV.	11	



CONNECTOR ON RECOMMENDED FOOTPRINT PATTERN

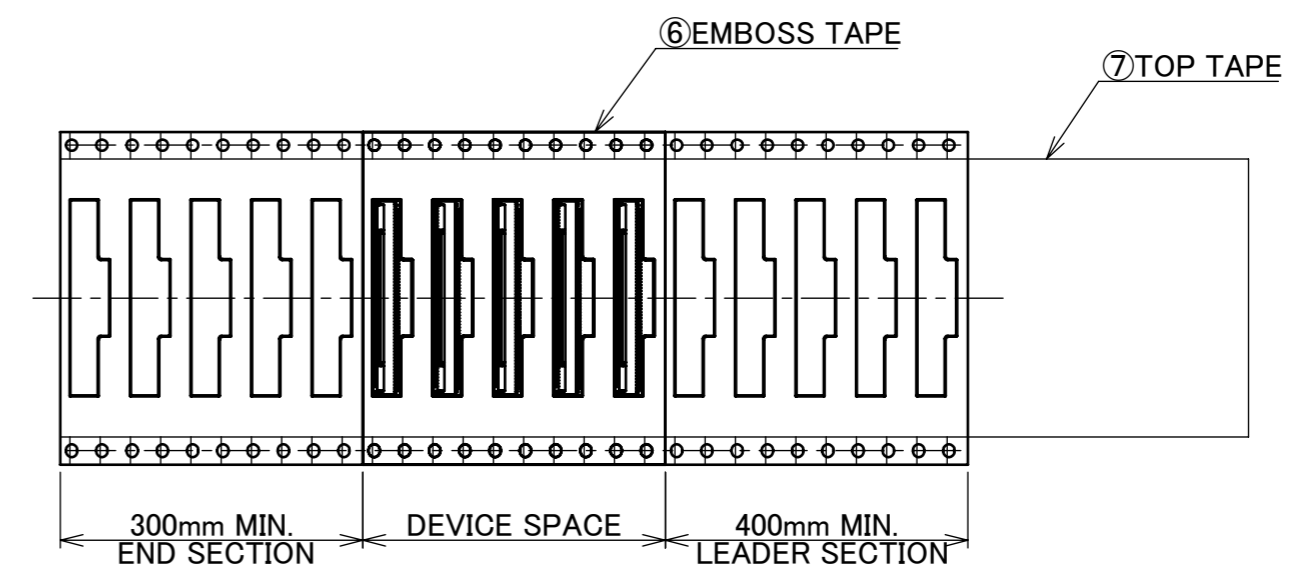
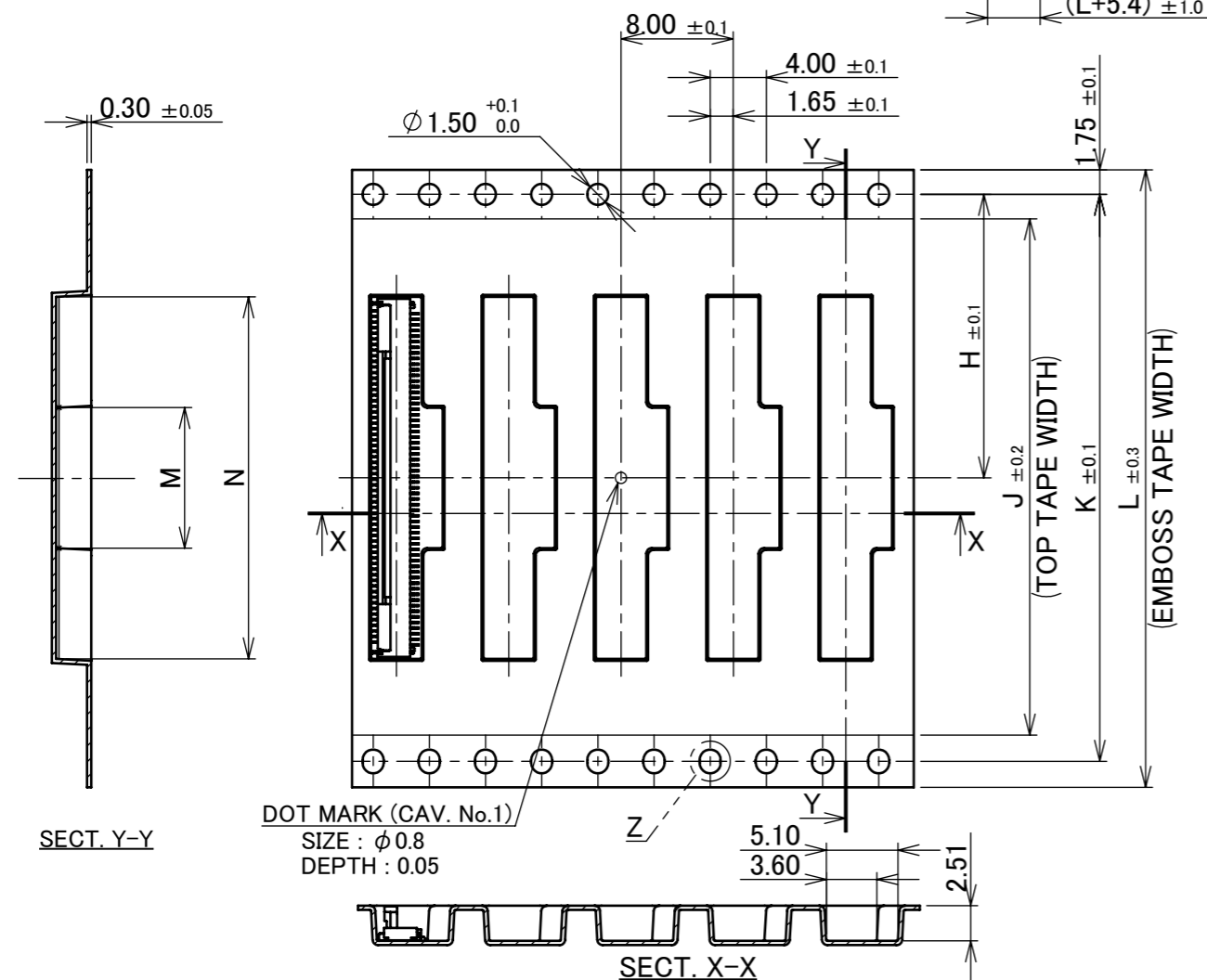
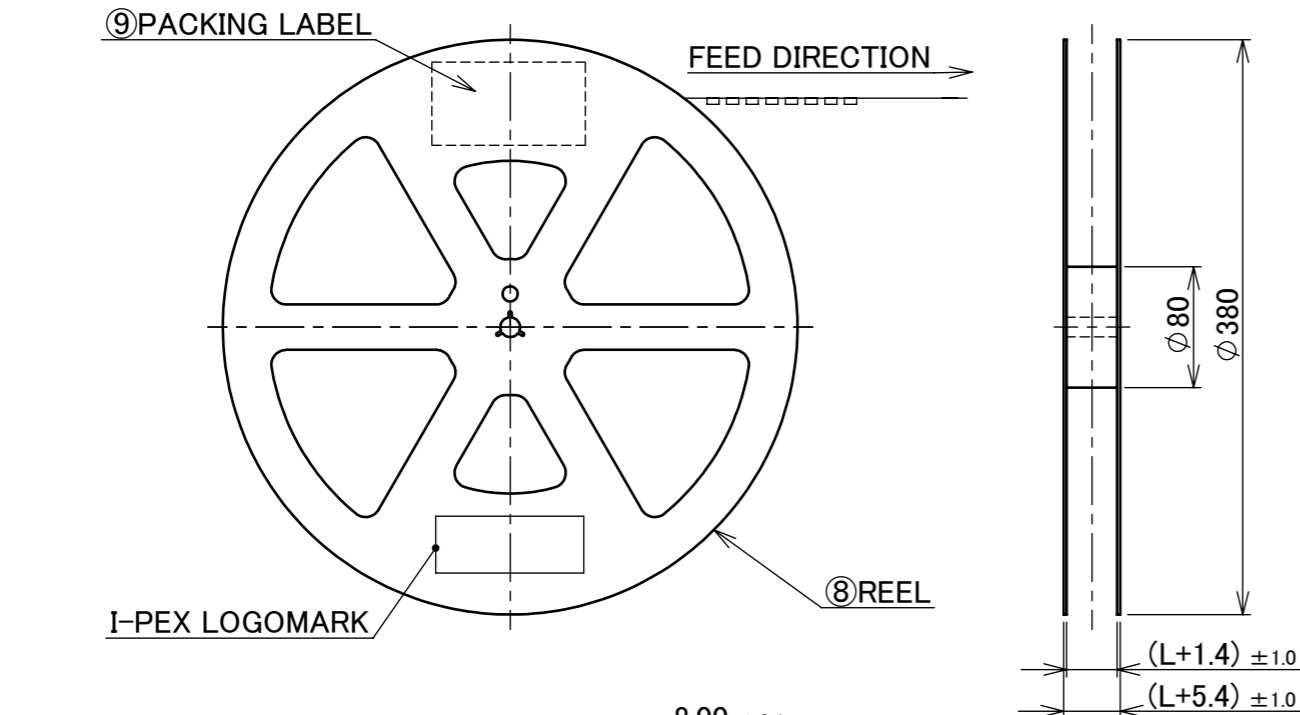


REFLOW TEMPERATURE PROFILE  
 SENJU METAL INDUSTRY CO., LTD. : M705-SHF(Sn96.5 Ag3.0 Cu0.5)

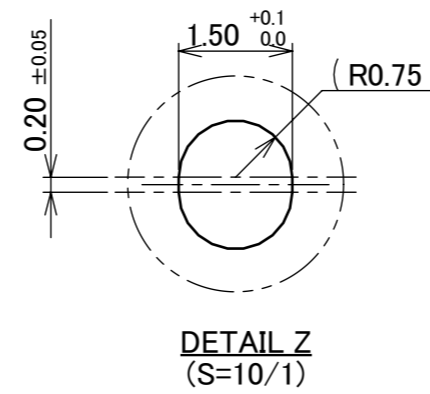
ANGLE	±2°	6 OVER 30 MAX.	±0.3	PROJECTION 	SERIES No. R6	CUSTOMER COPY		
6 MAX.	±0.2	30 OVER 120 MAX.	±0.5			SCALE 5:1	<b>I-PEX</b>	
GENERAL TOLERANCE.				TITLE MINIFLEX® 2-BF ASS'Y	UNIT mm	SIZE A3		
DWG.	DATE			DWG. No.	20617			
CHK.								
APP.								

PART NO.	H	J	K	L	M	N	QTY. PER EMBOSS REEL (PIECES / REEL)	QTY. PER PACKING CARTON (REELS / CARTON)
20617-080E-01	14.20	26.00	28.40	32.00	10.00	17.80	4000 / REEL	4 / CARTON
20617-100E-01	14.20	26.00	28.40	32.00	10.00	21.80		
◆20617-110E-01	20.20	37.00	40.40	44.00	10.00	23.80	4000 / REEL	3 / CARTON
20617-120E-01	20.20	37.00	40.40	44.00	10.00	25.80		

◆ MARK MEANS NOT AVAILABLE.



- NOTES.
- TAPING SPECIFICATION FOLLOWS JIS C 0806 (IEC 60286-3).
  - MAKE EMPTY SECTION OF LEADER AND END ON EACH END OF THE TAPE.
  - TOP TAPE SHALL NOT STICK OUT FROM EMBOSS TAPE.
  - TOP TAPE SHALL NOT COVER FEED HOLE.



NO.	DISCRIPTION	MATERIAL	FINISH , REMARKS
9	PACKING LABEL	-	-
8	REEL	PS	BLACK
7	TOP TAPE	PET t=0.062 TRANSPARENCY	ANTI-STATIC TYPE
6	EMBOSS TAPE	PS t=0.3 TRANSPARENCY	ANTI-STATIC TYPE

ANGLE	±2°	6 OVER 30 MAX.	±0.3	PROJECTION ①	SERIES No. R6	CUSTOMER COPY	
6 MAX.	±0.2	30 OVER 120 MAX.	±0.5				
GENERAL TOLERANCE.				TITLE MINIFLEX® 2-BF ASS'Y	SCALE 1:X	I-PEX	
DWG.	DATE						
CHK.							
APP.							
DWG. No.	20617			SIZE A3	SHEET 5/5	REV. 11	