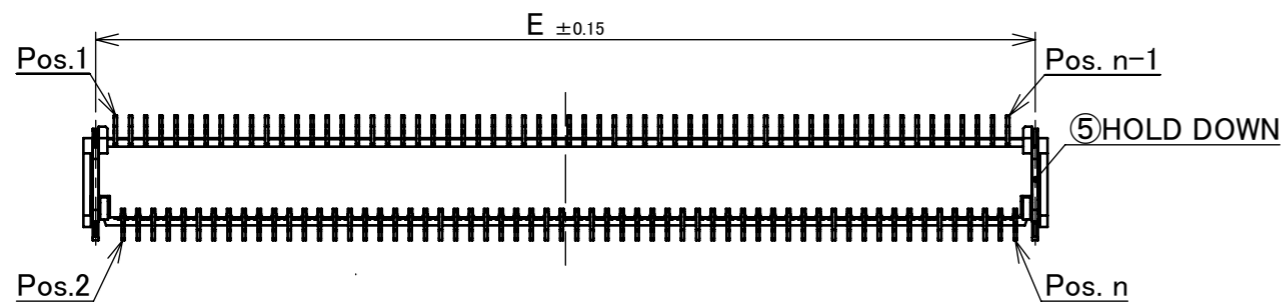
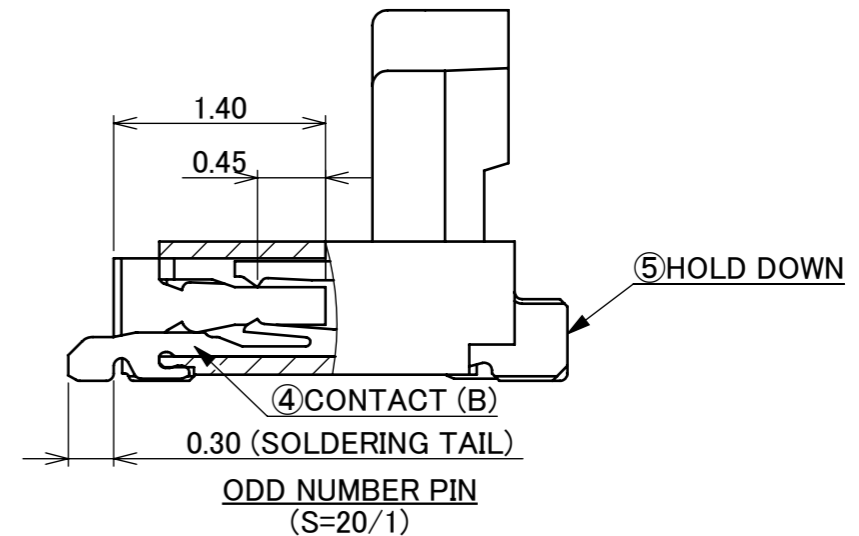
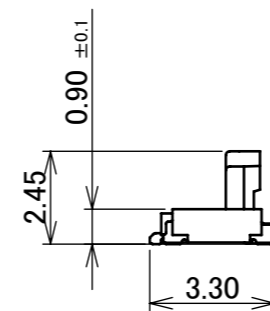
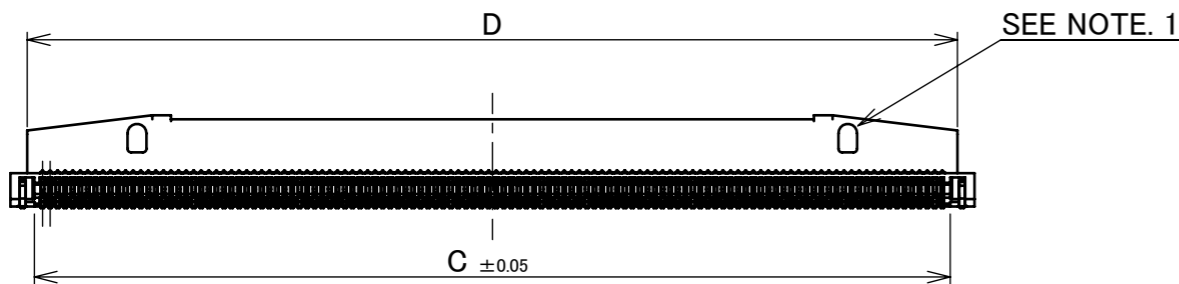
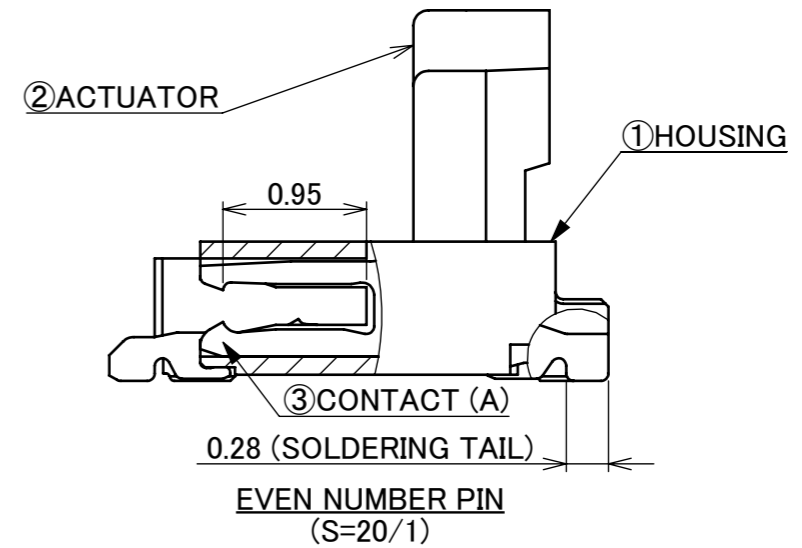
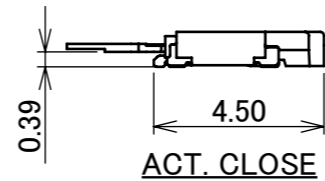
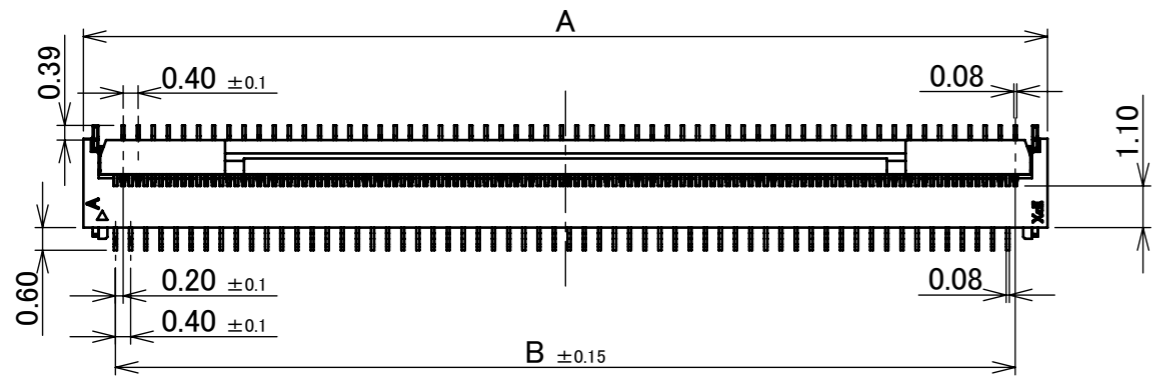


Recommended P/N 20617-***E-01

PART NO.	Pos.	A	B	C	D	E
20617-080E-01	80	17.50	15.80	16.22	16.60	16.85
20617-100E-01	100	21.50	19.80	20.22	20.60	20.85
◆20617-110E-01	110	23.50	21.80	22.22	22.60	22.85
20617-120E-01	120	25.50	23.80	24.22	24.60	24.85

◆MARK MEANS NOT AVAILABLE.



NO.	DISCRIPTION	MATERIAL	FINISH , REMARKS
5	HOLD DOWN	BRASS	SOLDERING AREA : Au 0.03 μ m MIN. OVER Ni 1.00 μ m MIN.
4	CONTACT(B)	PHOSPHOR BRONZE	CONTACT AREA&SOLDERING AREA : Au 0.03 μ m MIN. OVER Ni 1.00 μ m MIN.
3	CONTACT(A)	PHOSPHOR BRONZE	CONTACT AREA&SOLDERING AREA : Au 0.03 μ m MIN. OVER Ni 1.00 μ m MIN.
2	ACTUATOR	LCP	UL94V-0,BLACK
1	HOUSING	LCP	UL94V-0,BEIGE

NOTES.

- This dent shape is purposed for good injection quality. This dent shape will not affect connector function. Dent shape shown on drawing is just for reference. Dent shape and quantity might change from different pin count and different tooling.
- CONTACT POINT : TOP AND BOTTOM CONTACT.

REV.	ECN	BY	DATE	APP.	APP.	PROJECTION	SERIES No.	TITLE	SCALE	SHEET	REV.
10	Z200959	S.Sh	Sept./14/'20	Y.S	ANGLE ±2°	6 OVER 30 MAX. ±0.3	R6	MINIFLEX® 2-BF ASS'Y	5:1	I-PEX	10
9	Z200818	M.M	Aug./06/'20	Y.S	6 MAX. ±0.2	30 OVER 120 MAX. ±0.5	R6		UNIT		
8	Z200585	M.M	June/08/'20	Y.S	GENERAL TOLERANCE.			mm			
7	Z191444	M.M	Nov./05/'19	H.I	DWG. M.Ishimaru	DATE 2014/01/24		SIZE			
6	Z191238	S.Sh	Sept./17/'19	H.I	CHK. J.Tateishi			A3			
5	Z181213	R.F	Sept./14/'18	H.I	APP. E.Kawabe			1/5			
REVISION RECORD							DWG. No. 20617				

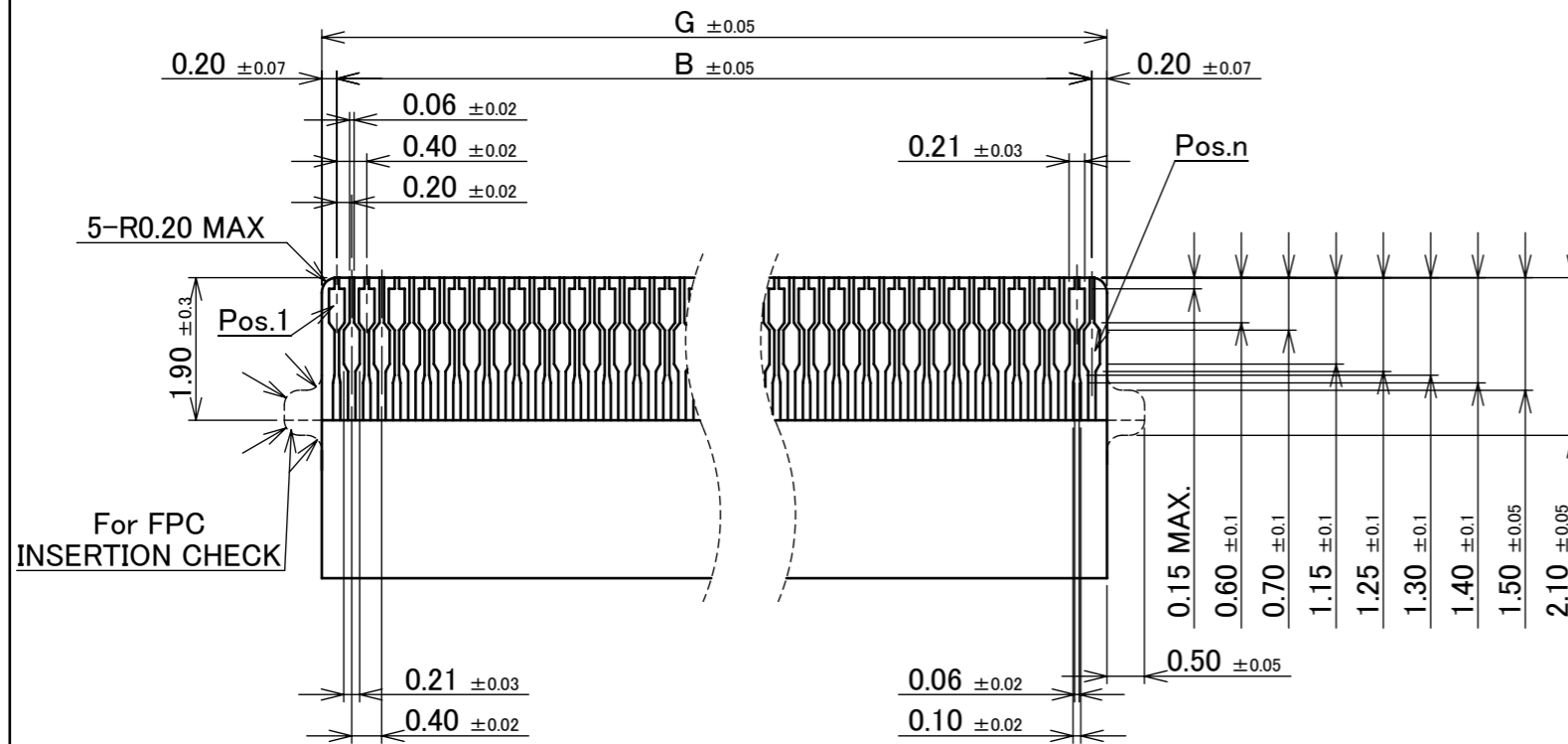
ITEMS	SPECIFICATION
RATING VOLTAGE	50V AC (PER CONTACT)
RATING AMPERAGE	0.2A DC (PER CONTACT)
OPERATING TEMPERATURE	233~358K(-40°C~+85°C)
OPERATING HUMIDITY	85% MAX.(NON-CONDENSING)
CONTACT RESISTANCE	INITIAL : 100mohm MAX. / AFTER TEST : \triangle 40mohm MAX.
INSULATION RESISTANCE	INITIAL : 100Mohm MIN. / AFTER TEST : 100Mohm MIN.
DIELECTRIC WITHSTANDING VOLTAGE	AC150V 1min
DURABILITY	20 CYCLES
ACTUATOR LOCKING FORCE (INITIAL / 20TH CYCLES)	INITIAL: 0.2N (20.4gf) \times n MAX. 20 CYCLES : 0.2N (20.4gf) \times n MAX.
ACTUATOR UNLOCKING FORCE (INITIAL / 20TH CYCLES)	INITIAL: 0.014N (1.4gf) \times n MIN. 20 CYCLES : 0.014N (1.4gf) \times n MIN.
FPC RETENTION FORCE (INITIAL / 20TH CYCLES)	INITIAL: 0.2N (20.4gf) \times n MIN. 20 CYCLES : 0.2N (20.4gf) \times n MIN.
COPLANARITY	0.10 MAX.
PRODUCT SPECIFICATION	PRS-2319
TEST REPORT	TR-16128
PACKING STANDARD	PST-16121
INSTRUCTION MANUAL	HIM-16031
APPEARANCE CRITERIA No.	QLS-A***

※ "n" IS THE NUMBER OF PIN

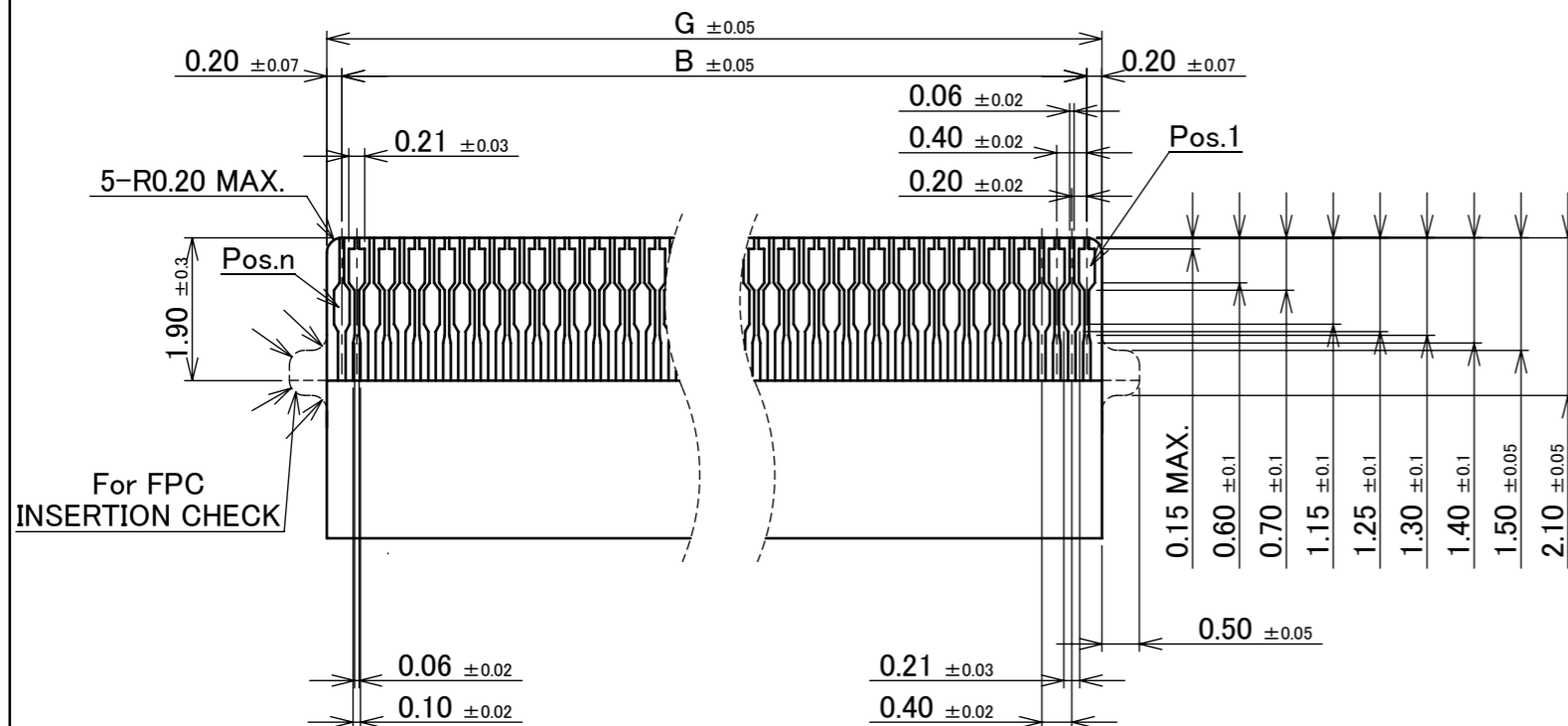
ANGLE	$\pm 2^\circ$	6 OVER 30 MAX.	± 0.3	PROJECTION 	SERIES No. R6	CUSTOMER COPY		
6 MAX.	± 0.2	30 OVER 120 MAX.	± 0.5					
GENERAL TOLERANCE.				TITLE MINIFLEX [®] 2-BF ASS'Y	SCALE	I-PEX		
DWG.	DATE				5:1			
CHK.					UNIT			
APP.					mm			
				DWG. No.	20617	SIZE	SHEET	REV.
					A3	2/5	10	

PART No.	Pos.	B	F	G
20617-080E-01	80	15.80	17.00	16.20
20617-100E-01	100	19.80	21.00	20.20
◆20617-110E-01	110	21.80	23.00	22.20
20617-120E-01	120	23.80	25.00	24.20

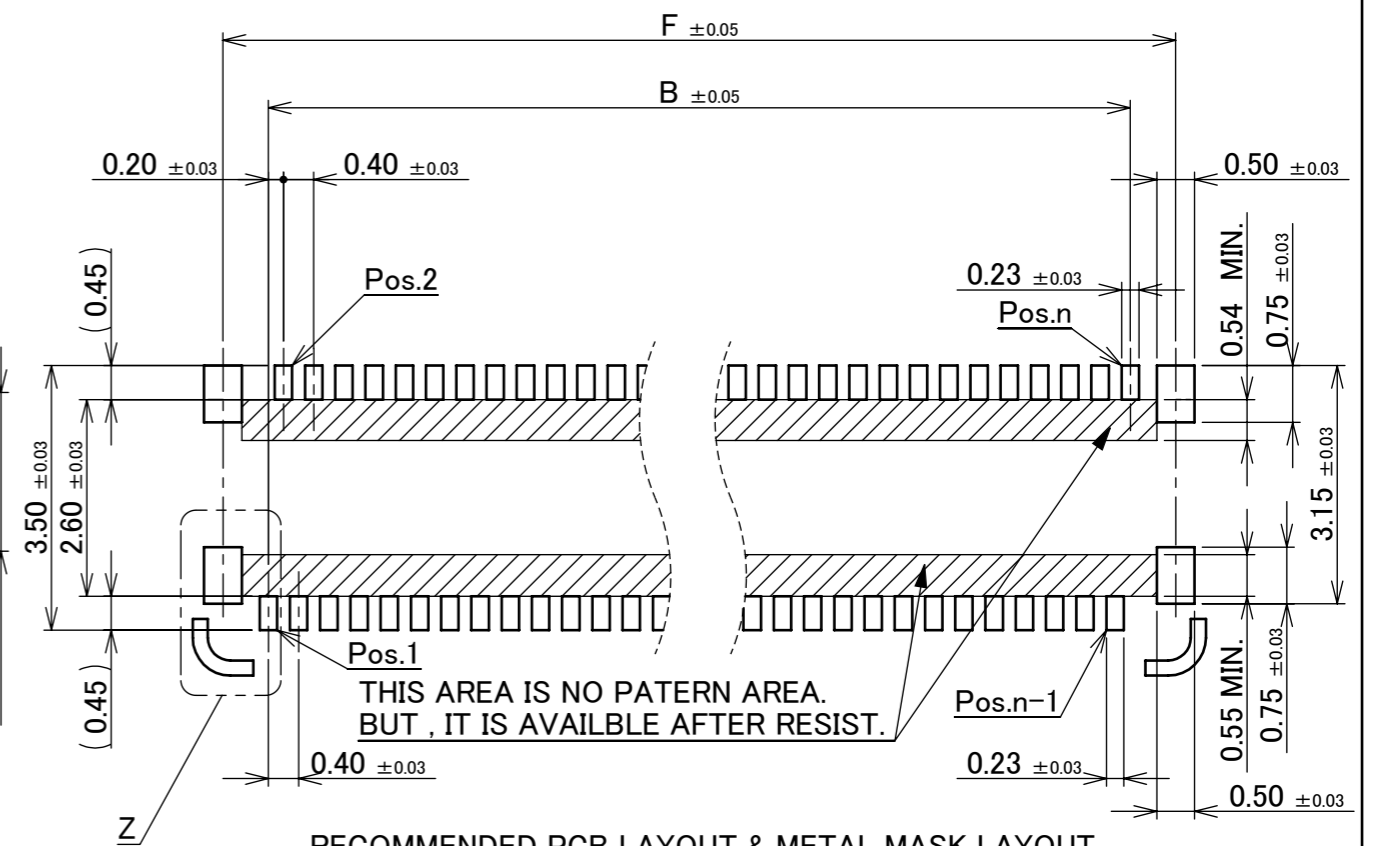
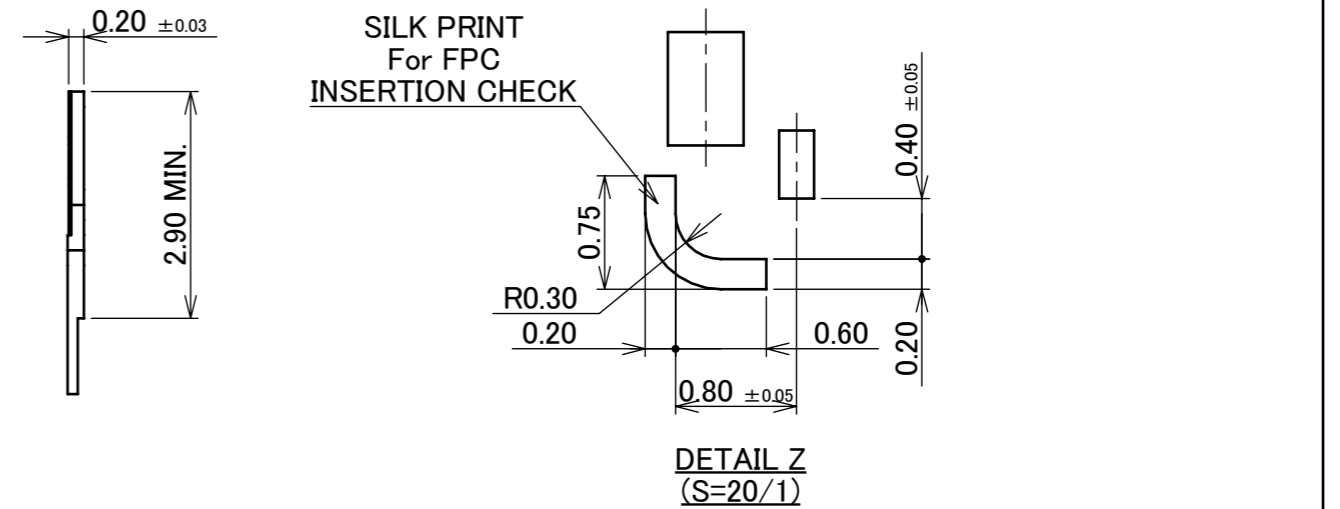
◆ MARK MEANS NOT AVAILABLE.



RECOMMENDED FPC LAYOUT (For TOP CONTACT)

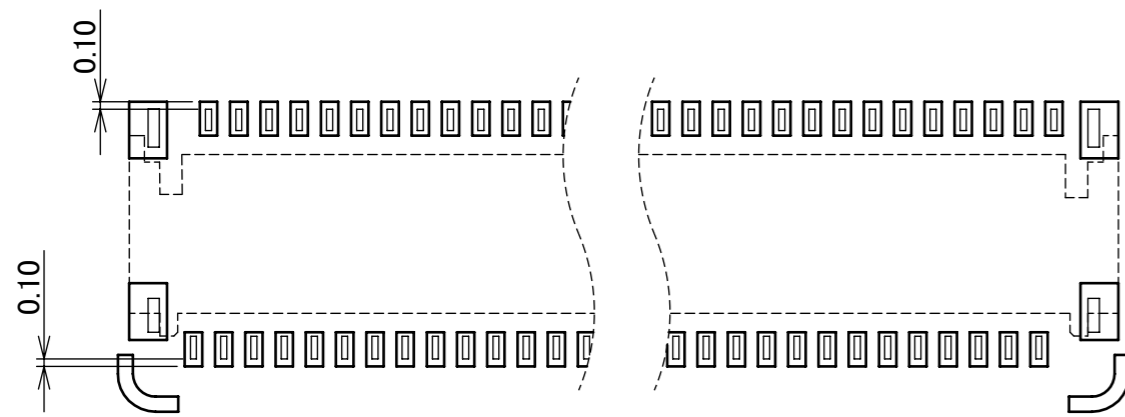


RECOMMENDED FPC LAYOUT (For BOTTOM CONTACT)

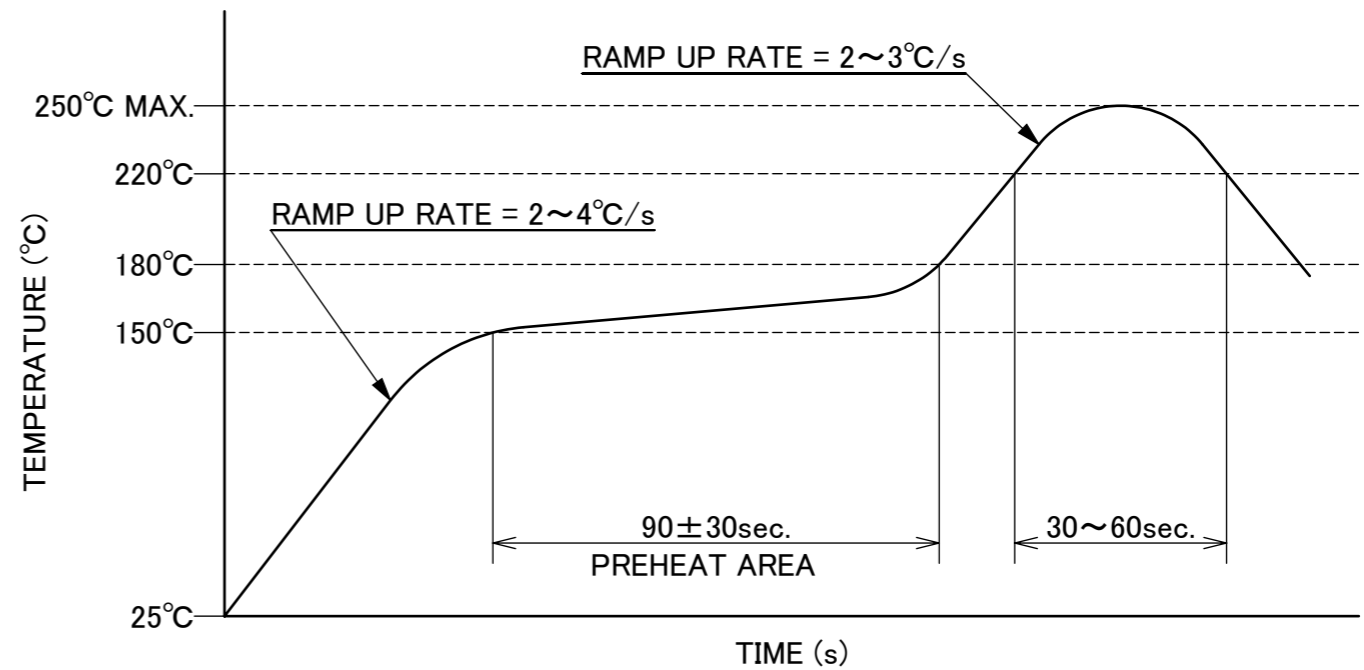


RECOMMENDED PCB LAYOUT & METAL MASK LAYOUT
METAL MASK THICKNESS : t=0.12mm

ANGLE	±2°	6 OVER 30 MAX.	±0.3	PROJECTION	SERIES No.	CUSTOMER COPY		
6 MAX.	±0.2	30 OVER 120 MAX.	±0.5		R6	SCALE	I-PEX	
GENERAL TOLERANCE.					TITLE	5:1		
DWG.	DATE			MINIFLEX® 2-BF ASS'Y	UNIT	mm		
CHK.				DWG. No.	20617	SIZE	SHEET	REV.
APP.						A3	3/5	10



CONNECTOR ON RECOMMENDED FOOTPRINT PATTERN

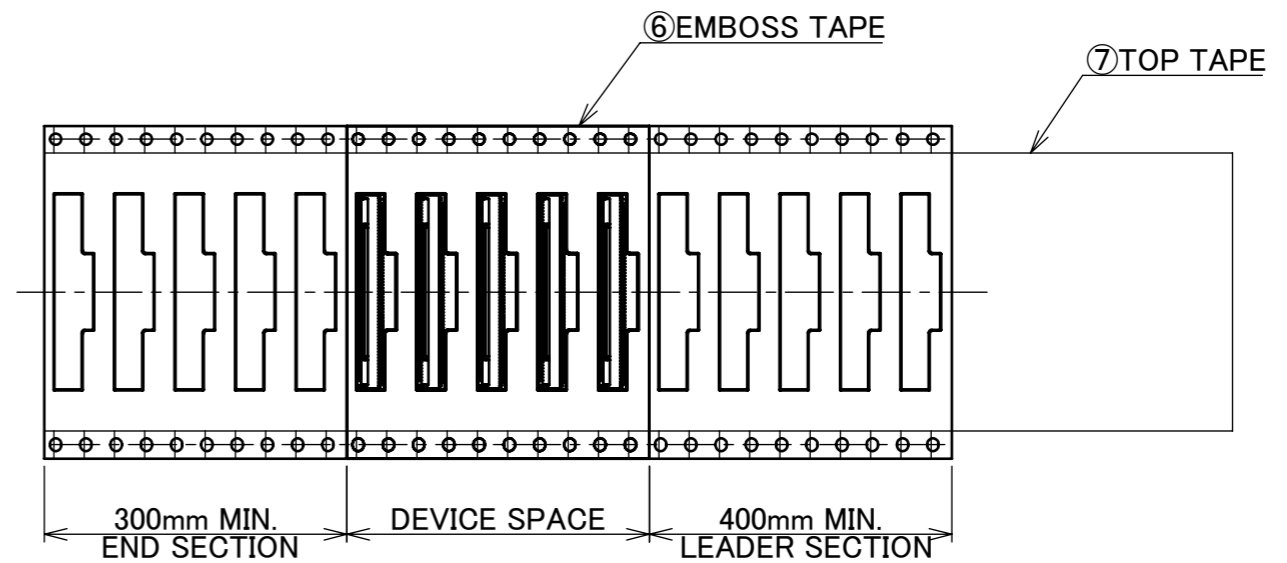
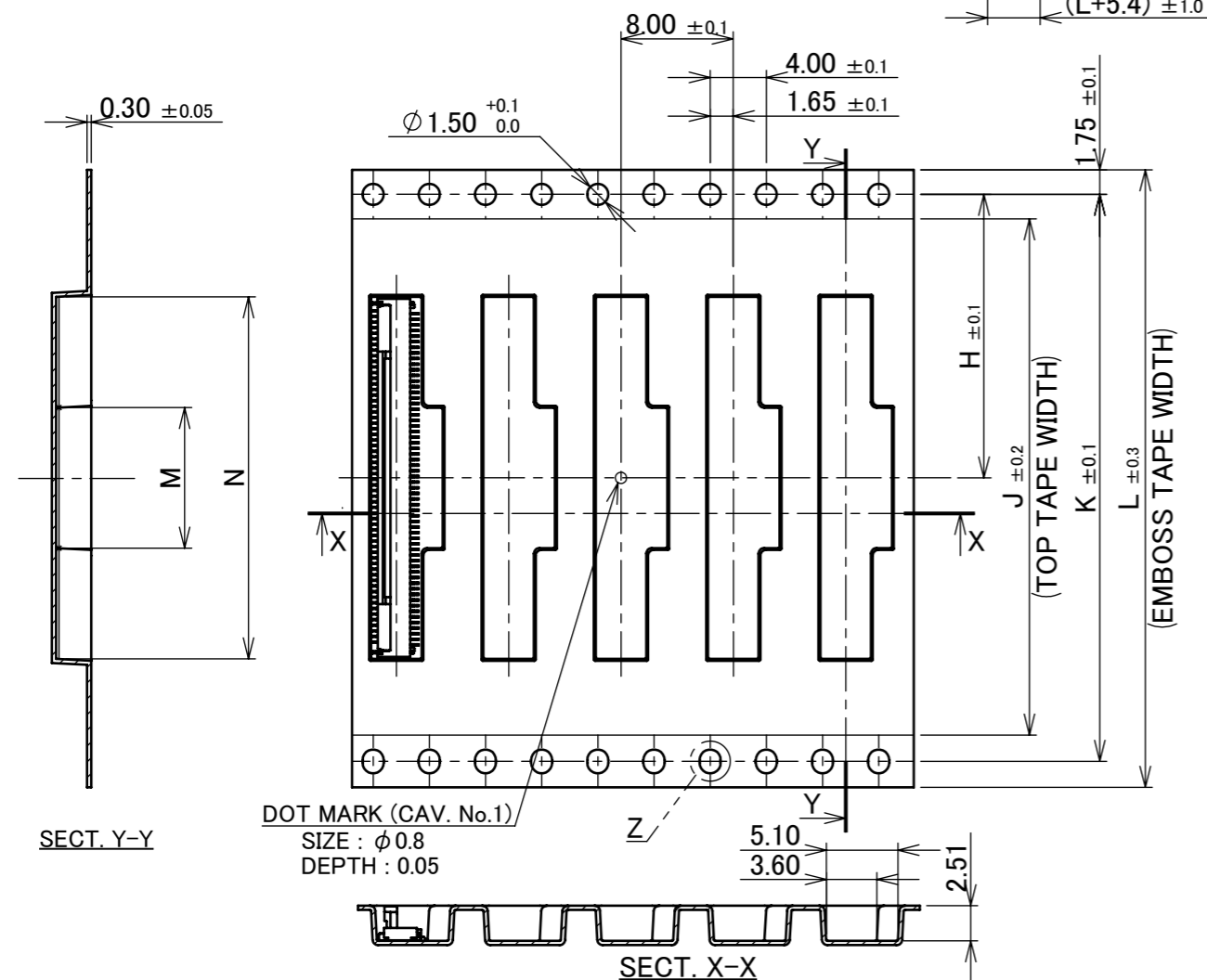
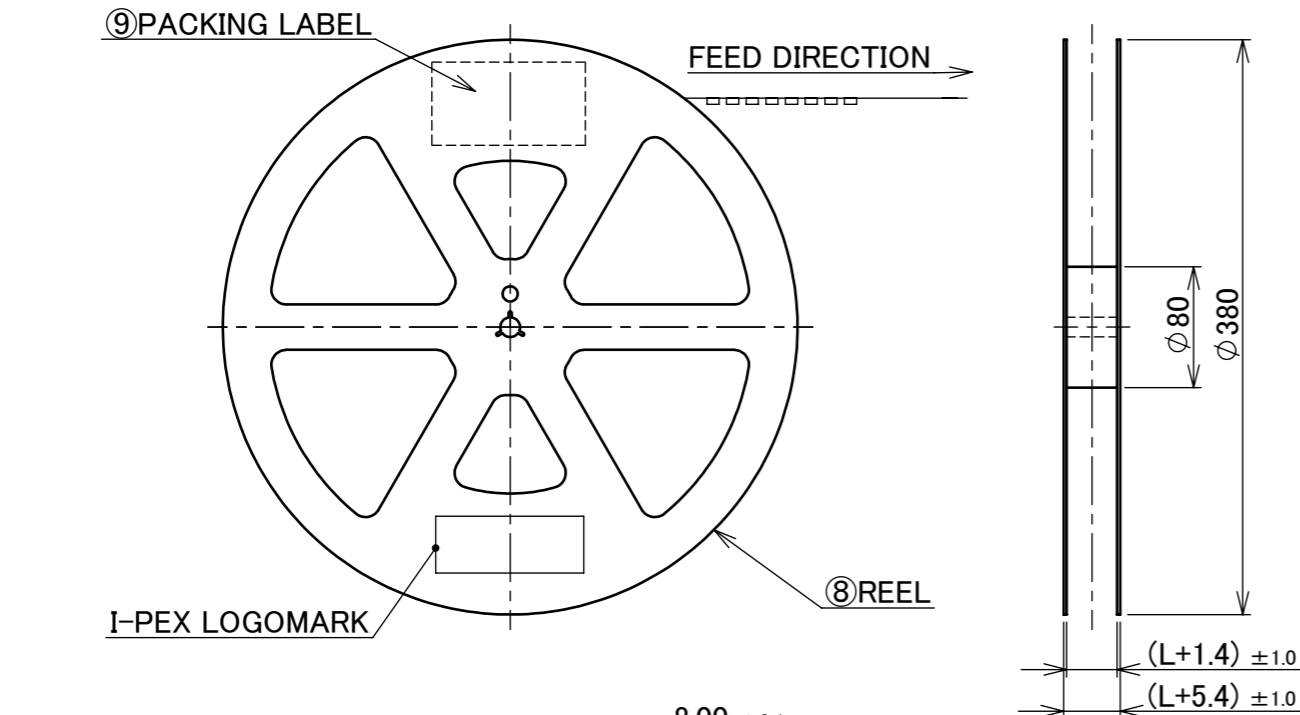


REFLOW TEMPERATURE PROFILE
 SENJU METAL INDUSTRY CO., LTD. : M705-SHF(Sn96.5 Ag3.0 Cu0.5)

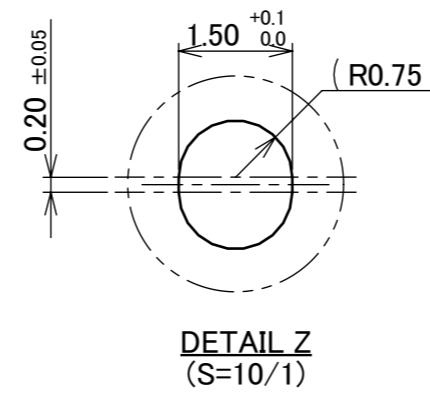
ANGLE	±2°	6 OVER 30 MAX.	±0.3	PROJECTION 	SERIES No. R6	CUSTOMER COPY			
6 MAX.	±0.2	30 OVER 120 MAX.	±0.5			SCALE 5:1	I-PEX		
GENERAL TOLERANCE.				TITLE	UNIT				
DWG.	DATE			MINIFLEX® 2-BF ASS'Y	mm				
CHK.					SIZE	SHEET	REV.		
APP.					DWG. No.	A3	4/5	10	
				20617					

PART NO.	H	J	K	L	M	N	QTY. PER EMBOSS REEL (PIECES / REEL)	QTY. PER PACKING CARTON (REELS / CARTON)
20617-080E-01	14.20	26.00	28.40	32.00	10.00	17.80	4000 / REEL	4 / CARTON
20617-100E-01	14.20	26.00	28.40	32.00	10.00	21.80		
◆20617-110E-01	20.20	37.00	40.40	44.00	10.00	23.80	4000 / REEL	3 / CARTON
20617-120E-01	20.20	37.00	40.40	44.00	10.00	25.80		

◆ MARK MEANS NOT AVAILABLE.



- NOTES.
- TAPING SPECIFICATION FOLLOWS JIS C 0806 (IEC 60286-3).
 - MAKE EMPTY SECTION OF LEADER AND END ON EACH END OF THE TAPE.
 - TOP TAPE SHALL NOT STICK OUT FROM EMBOSS TAPE.
 - TOP TAPE SHALL NOT COVER FEED HOLE.



NO.	DISCRIPTION	MATERIAL	FINISH , REMARKS
9	PACKING LABEL	-	-
8	REEL	PS	BLACK
7	TOP TAPE	PET t=0.062 TRANSPARENCY	ANTI-STATIC TYPE
6	EMBOSS TAPE	PS t=0.3 TRANSPARENCY	ANTI-STATIC TYPE

ANGLE	±2°	6 OVER 30 MAX.	±0.3	PROJECTION ①	SERIES No. R6	CUSTOMER COPY		
6 MAX.	±0.2	30 OVER 120 MAX.	±0.5					
GENERAL TOLERANCE.				TITLE MINIFLEX® 2-BF ASS'Y	SCALE 5:1	I-PEX		
DWG.	DATE							
CHK.								
APP.								
DWG. No.				20617	SIZE A3	SHEET 5/5	REV. 10	