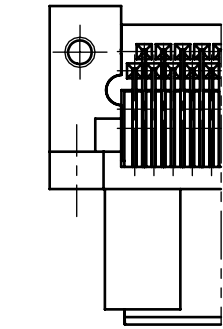
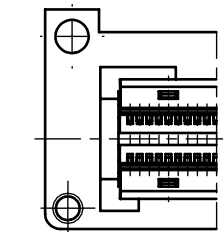




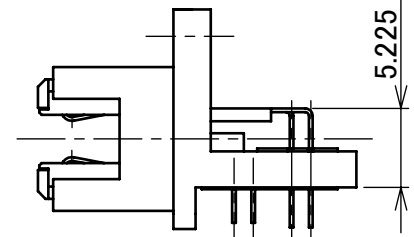
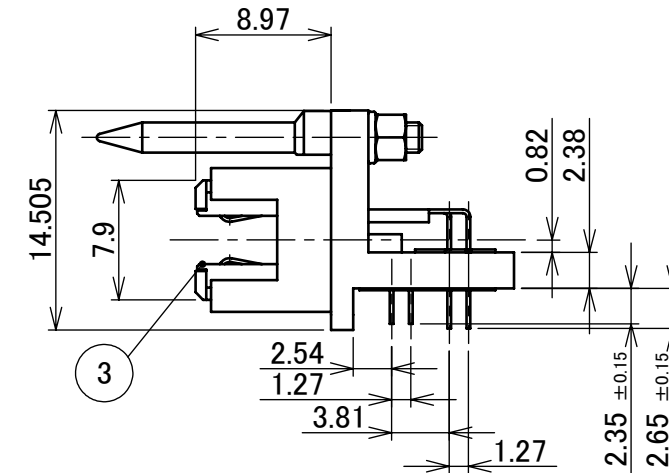
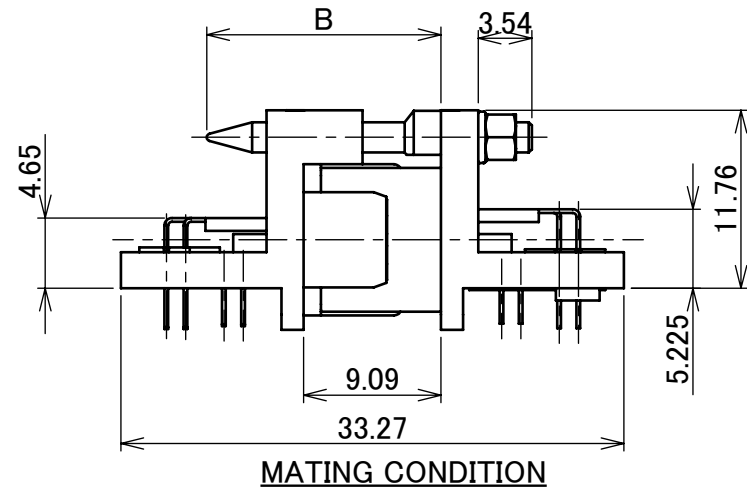
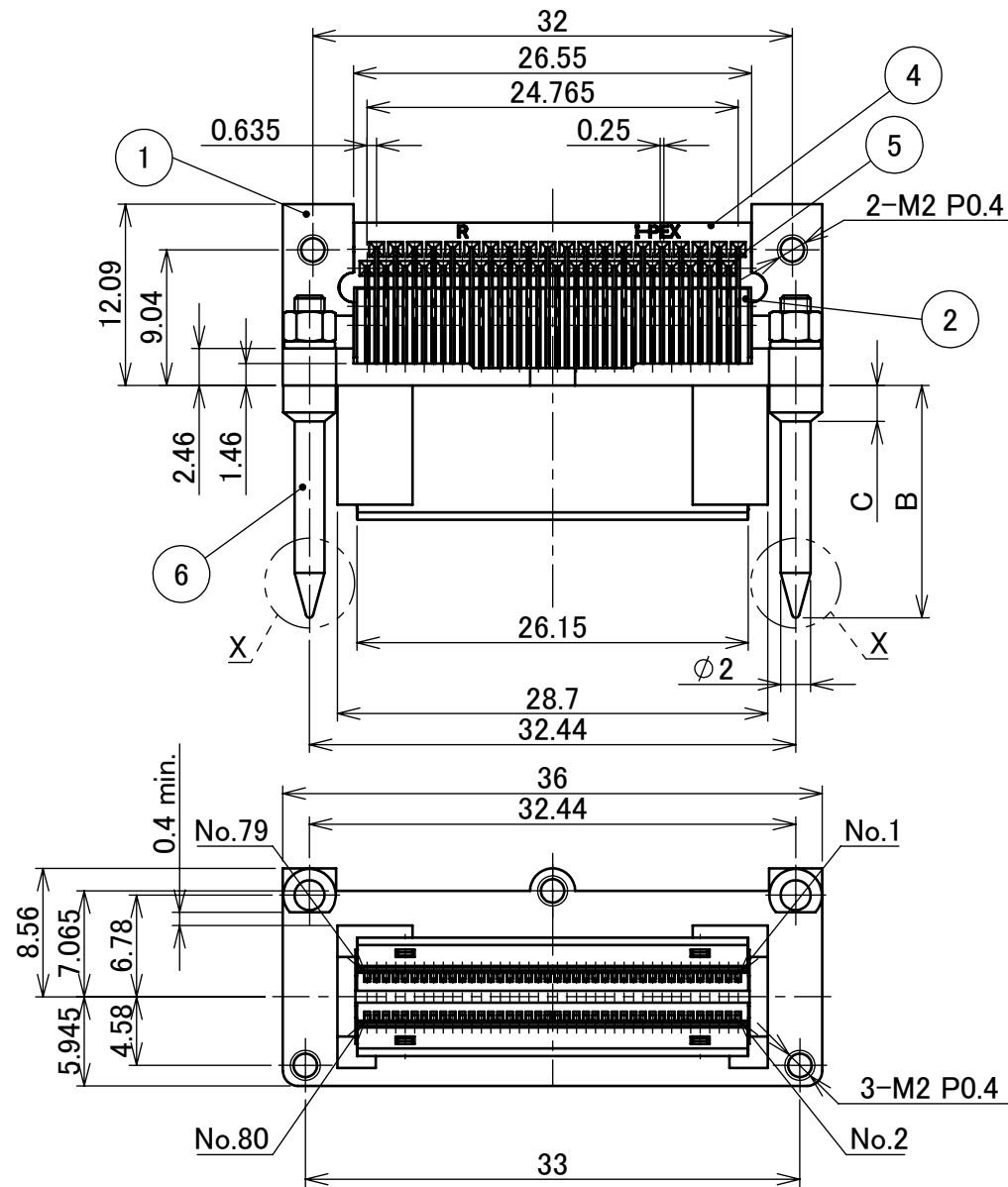
RoHS Compliant



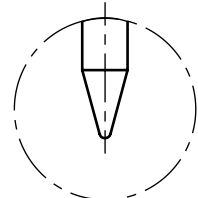
WITHOUT GUIDE PIN



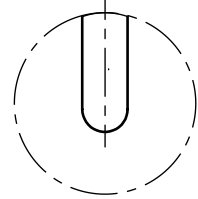
WITHOUT GUIDE PIN



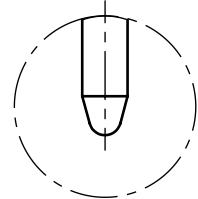
WITHOUT GUIDE PIN



GUIDE PIN TYPE TAPER TOP



SPHERE TOP



2nd SPHERE TOP

DETAIL X
(S = 3/1)

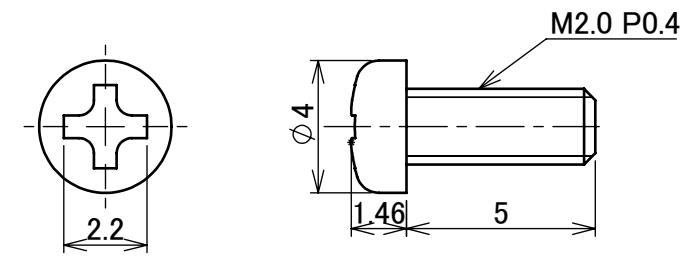
NOTES

1. CONNECTOR TO BE MATED: 30029

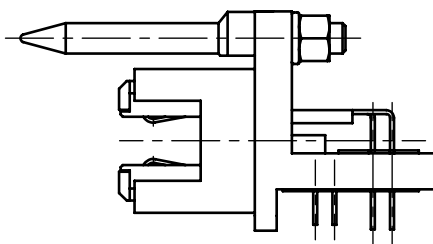
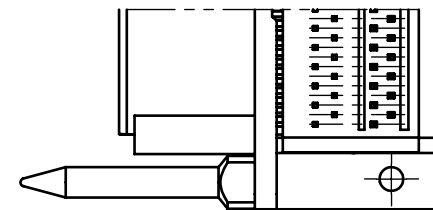
6	GUIDE PIN	STAINLESS STEEL (30030-080T-017*/018*)	NO PLATING
		STEEL (EXCEPT 30030-080T-017*/018*)	Ni PLATING
5	CONTACT	COPPER ALLOY	CONTACT AREA: Au FLASH OVER Pd/Ni SOLDER TAIL: Au FLASH
4	LOCATOR PLATE	PA	BLACK, UL94V-0
3	CONTACT GUIDE	PPS	BLACK, UL94V-0
2	INSULATOR	PPS	BLACK, UL94V-0
1	SHELL	Zn ALLOY	Ni PLATING
NO.	DISCRIPTION	MATERIAL	FINISH , REMARKS

18	Z220241	M.H	Mar./18/'22	Y.H	ANGLE	±2°	6 OVER 30 MAX.	±0.3	PROJECTION ⊕	SERIES No. R12	CUSTOMER COPY	
17	Z191320	IMI	Sept./30/'19	Y.S	6 MAX.	±0.2	30 OVER 120 MAX.	±0.5				
16	Z181197	R.H	Sept./13/'18	TAK	GENERAL TOLERANCE.			TITLE				
15	Z170908	R.H	Sept./26/'17	M.T	DWG.	DATE		MINIDOCK				
14	Z06620	J.O	Nov./16/'06	T.H	E.Kawabe	1996/05/27		80P RIGHT ANGLE				
13	Z06363	J.O	Aug./02/'06	E.K	CHK.	S.Ishibashi		RECEPTACLE				
REV.	ECN	BY	DATE	APP.	APP.	Y.Fukuda		DWG. No.	30030	SCALE	I-PEX	
REVISION RECORD							SIZE	A3	SHEET	1/5		REV.

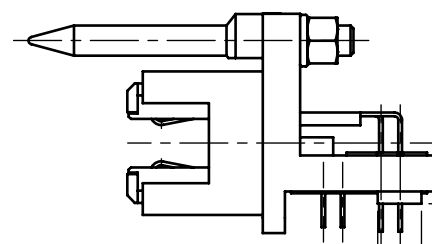
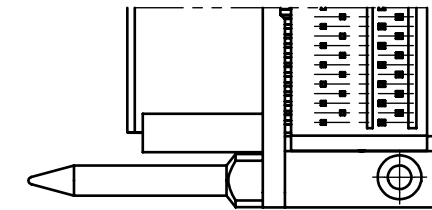
PART No.	GUIDE PIN TYPE	BOSS	A	B	C	NOTES
30030-080T-F	TAPER TOP	WITHOUT BOSS	2.3	15.5	2.4	WITH SCREW
30030-080T-01F	SPHERE TOP					WITHOUT SCREW
30030-080T-02F	TAPER TOP					WITH SCREW
30030-080T-03F	SPHERE TOP					WITHOUT SCREW
30030-080T-04F	WITHOUT GUIDE PIN (1413-00*)					WITH SCREW
30030-080T-05F	(WITHOUT NUT, WASHER)	WITHOUT SCREW				
30030-080T-06F	TAPER TOP	WITH BOSS	3.1	15.5	2.4	WITH SCREW
30030-080T-07F	SPHERE TOP					WITHOUT SCREW
30030-080T-08F	TAPER TOP					WITH SCREW
30030-080T-09F	SPHERE TOP					WITHOUT SCREW
30030-080T-10F	WITHOUT GUIDE PIN (1413-00*)					WITH SCREW
30030-080T-11F	(WITHOUT NUT, WASHER)	WITHOUT SCREW				
30030-080T-12F	2'nd SPHERE TOP	WITHOUT BOSS	2.3	15.5	2.4	WITH SCREW
30030-080T-13F		WITHOUT SCREW				
30030-080T-14F		WITH BOSS	3.1			WITH SCREW
30030-080T-15F		WITHOUT SCREW				
30030-080T-16F	SPHERE TOP	WITHOUT BOSS	2.3	13.0	2.4	WITHOUT SCREW
30030-080T-17F	TAPER TOP (MTL : STAINLESS STEEL)			15.5		
30030-080T-18F	SPHERE TOP (MTL : STAINLESS STEEL)					
30030-080T-19F	SPHERE TOP	WITH BOSS	3.1	14.0	4.0	WITH SCREW



SCREW 90042-001
(S = 5/1)



WITHOUT BOSS

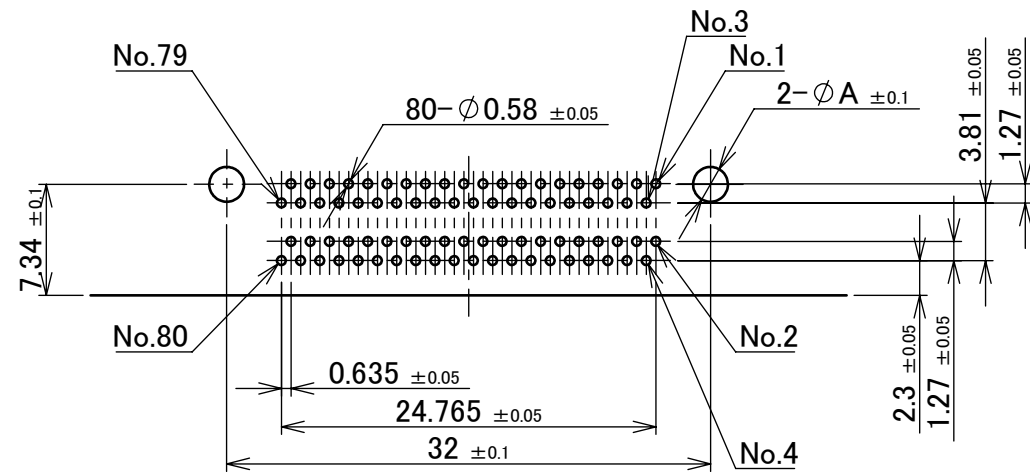


WITH BOSS

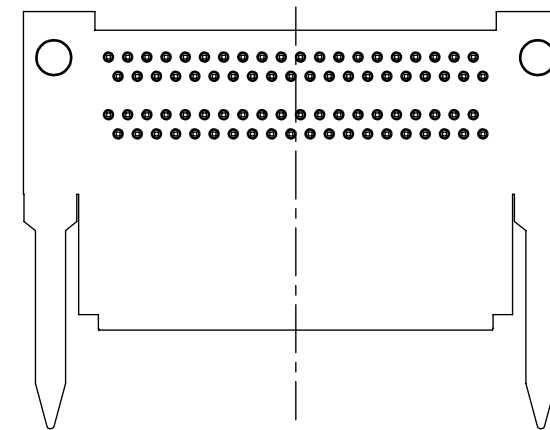
ANGLE	±2°	6 OVER 30 MAX.	±0.3	PROJECTION ⊕	SERIES No. R12	CUSTOMER COPY			
6 MAX.	±0.2	30 OVER 120 MAX.	±0.5						
GENERAL TOLERANCE.				TITLE MINIDOCK 80P RIGHT ANGLE RECEPTACLE	SCALE	I-PEX			
DWG.	DATE				2:1				
CHK.					UNIT			mm	
APP.					SIZE			SHEET	REV.
				DWG. No.	30030	A3	2/5		
							18		

ITEMS	SPECIFICATION
RATING VOLTAGE	250V AC (PER CONTACT PIN)
RATING AMPERAGE (FOR CONTACT)	0.5A AC/DC (PER CONTACT PIN)
OPERATING TEMPERATURE	208~358K(-65°C~+85°C)
OPERATING HUMIDITY	85% MAX.(NON-CONDENSING)
CONTACT RESISTANCE (FOR CONTACT)	INITIAL : 70mohm MAX. / AFTER TEST : \triangleleft 25mohm MAX.
INSULATION RESISTANCE	INITIAL : 10,000Mohm MIN. / AFTER TEST : 1,000Mohm MIN.
DIELECTRIC WITHSTANDING VOLTAGE	AC500V 1min
DURABILITY	5,000 CYCLES
MATING FORCE (INITIAL)	0.9N/pos. MAX.
UNMATING FORCE (AFTER TEST)	0.059N/pos. MIN.
COPLANARITY	-
PRODUCT SPECIFICATION	PRS-1011
TEST REPORT	TR-9020
PACKING STANDARD	300-071
INSTRUCTION MANUAL	-
APPEARANCE CRITERIA No.	QLS-A***

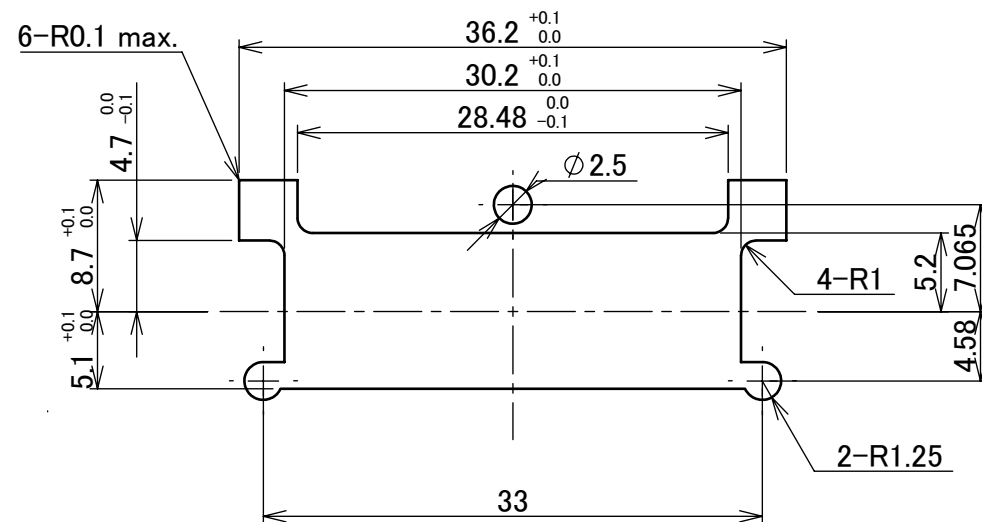
ANGLE	$\pm 2^\circ$	6 OVER 30 MAX.	± 0.3	PROJECTION 	SERIES No. R12	CUSTOMER COPY		
6 MAX.	± 0.2	30 OVER 120 MAX.	± 0.5					
GENERAL TOLERANCE.				TITLE MINIDOCK 80P RIGHT ANGLE RECEPTACLE	SCALE 	UNIT I-PEX		
DWG.	DATE							
CHK.								
APP.								
				DWG. No.	30030	SIZE A3	SHEET 3/5	REV. 18



RECOMMENDED FOOTPRINT PATTERN $t=1.6$



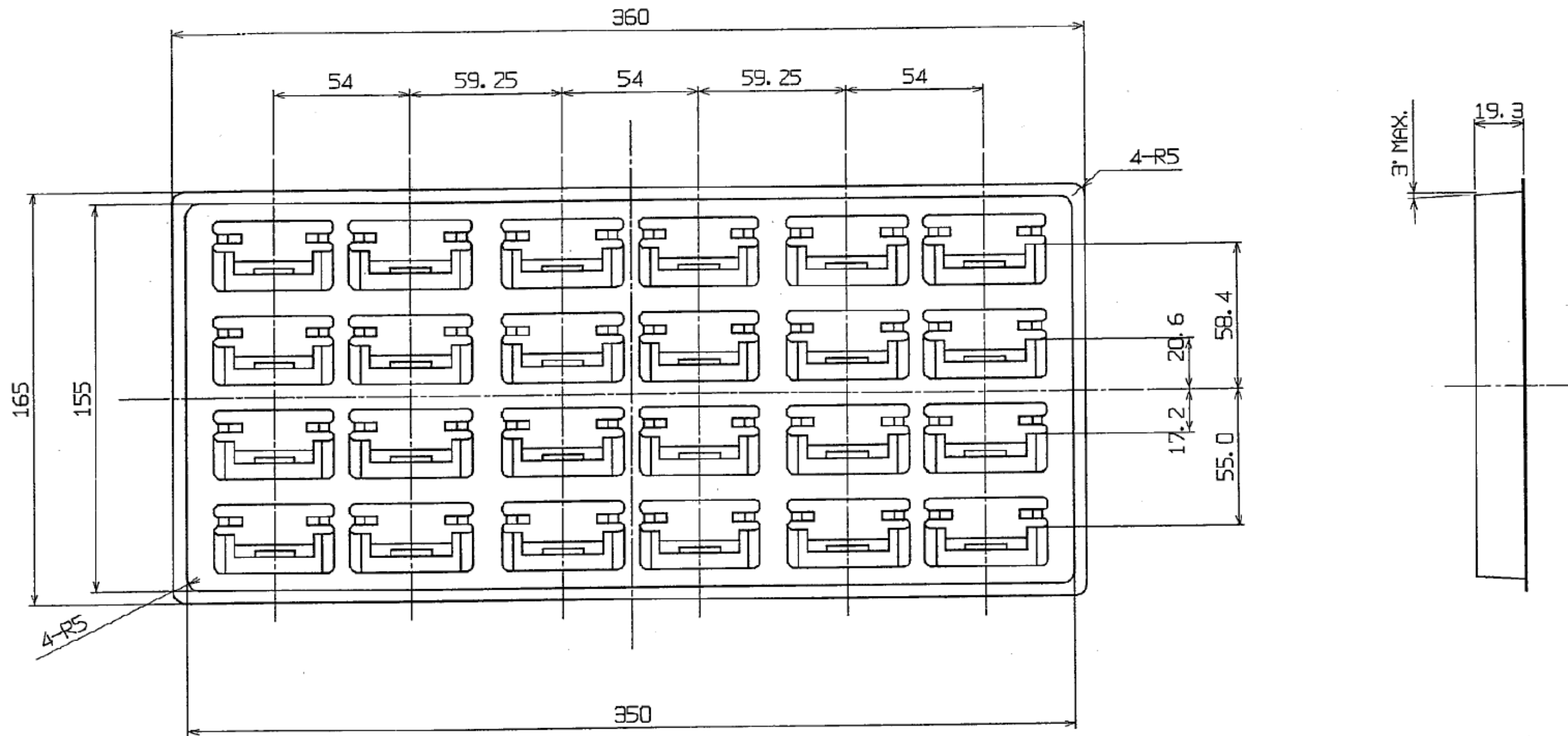
CONNECTOR ON RECOMMENDED FOOTPRINT PATTERN



RECOMMENDED PANEL DIMENSIONS

ANGLE	$\pm 2^\circ$	6 OVER 30 MAX.	± 0.3	PROJECTION	SERIES No.	CUSTOMER COPY		
6 MAX.	± 0.2	30 OVER 120 MAX.	± 0.5		R12	I-PEX		
GENERAL TOLERANCE.				TITLE		SCALE	2:1	
DWG.	DATE			MINIDOCK		UNIT	mm	
CHK.				80P RIGHT ANGLE		SIZE	SHEET	REV.
APP.				DWG. No.		A3	4/5	18
				30030				

PART NO.	Pos.	QTY./ TRAY	QTY./ SHIPPING CARTON	QTY./ PACKING CARTON
30030-080T-03F	80P	24	24 × 3 = 72	72 × 4 = 288



7	TRAY	PVC	-
NO.	DISCRIPTION	MATERIAL	FINISH , REMARKS

ANGLE	±2°	6 OVER 30 MAX.	±0.3	PROJECTION ⊕	SERIES No. R12	CUSTOMER COPY
6 MAX.	±0.2	30 OVER 120 MAX.	±0.5			
GENERAL TOLERANCE.				TITLE MINIDOCK 80P RIGHT ANGLE RECEPTACLE	SCALE 1:X UNIT mm	I-PEX
DWG.	DATE					
CHK.						
APP.						
				DWG. No.	30030	SIZE A3
				SHEET	5/5	REV. 18

Confidential C

I-PEX Inc.

QKE-DFE06-02 REV.12