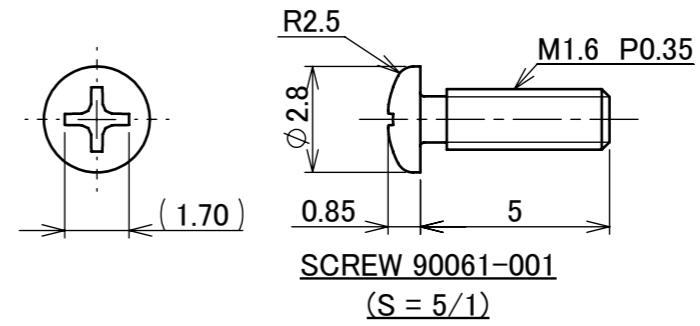
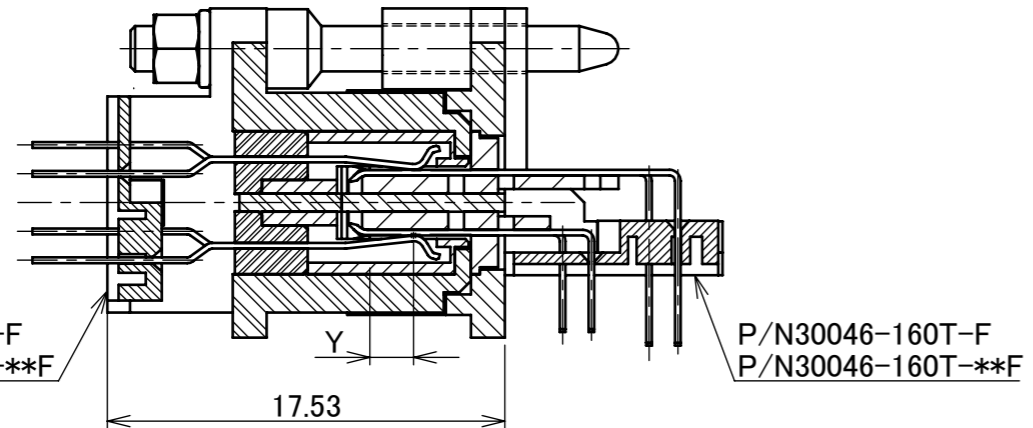
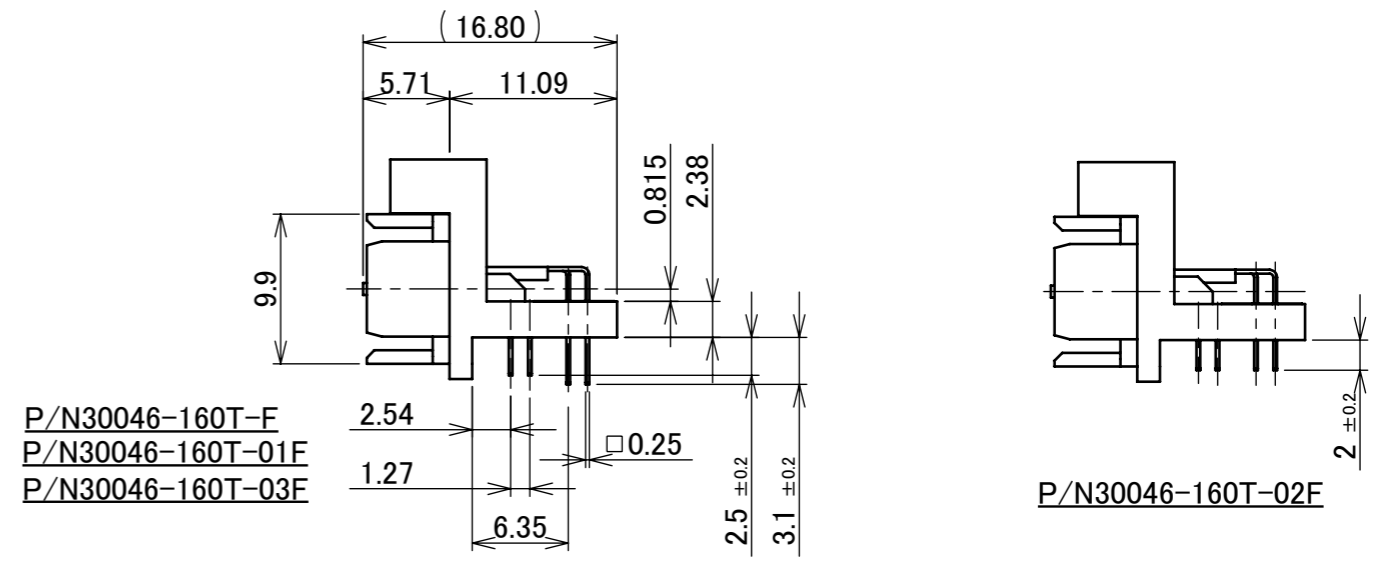
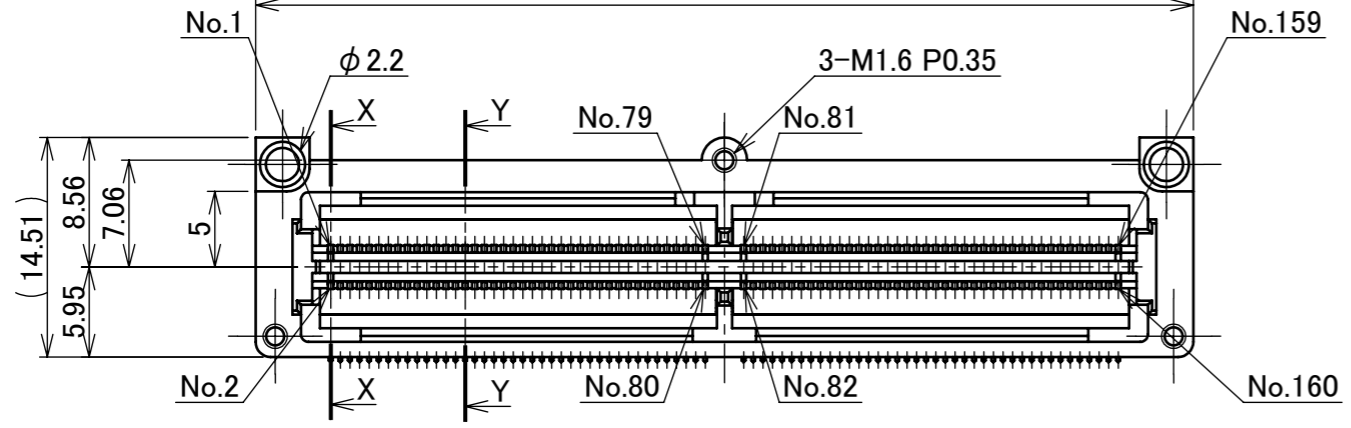
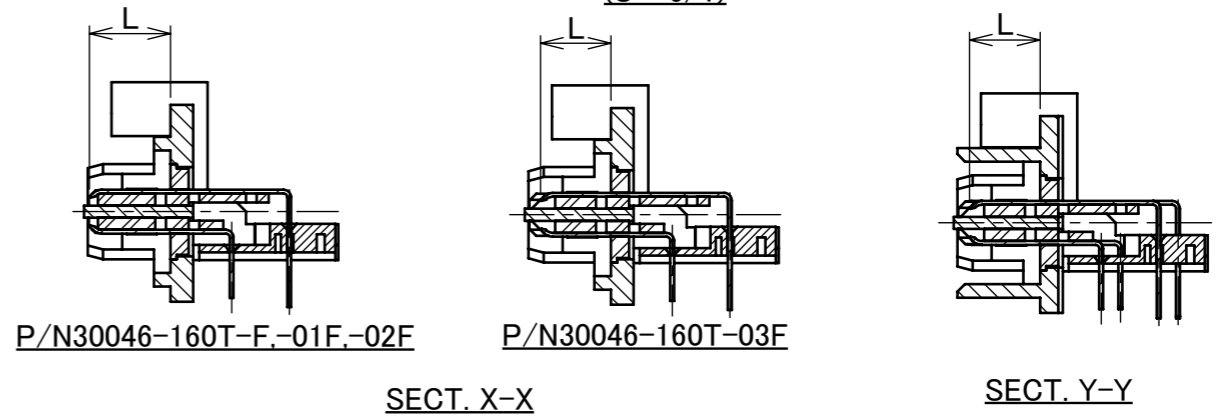
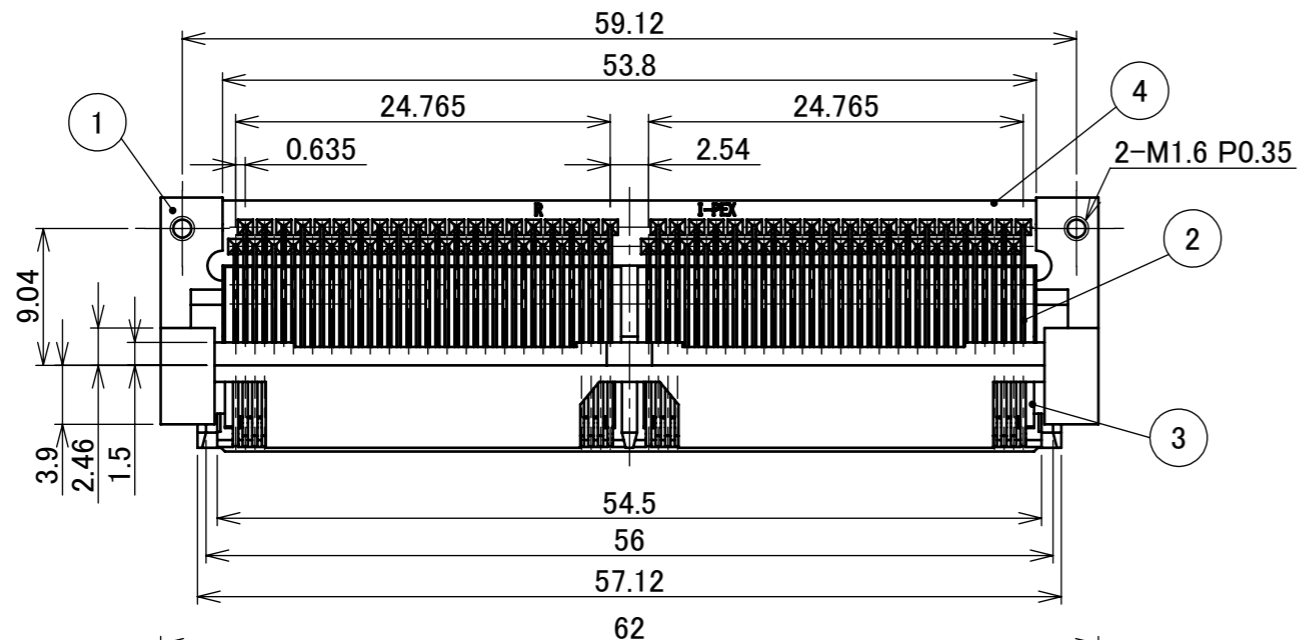


Recommended P/N 30046-160T-F

PART NO.	No. OF POS.	Y (MATING TRAVEL OF C/T)	CIRCUIT No. / L=CONTACT LENGTH		NOTES
			L=5.36	L=4.66	
30046-160T-F	160P	1.4, 2.1	No.1, 2, 79, 80, 81, 82, 159, 160	OTHERS	WITH SCREW
30046-160T-01F					NO SCREW
◆ 30046-160T-02F		1.4	-	ALL	WITH SCREW
30046-160T-03F					



◆:MARK MEANS NOT AVAILABLE.



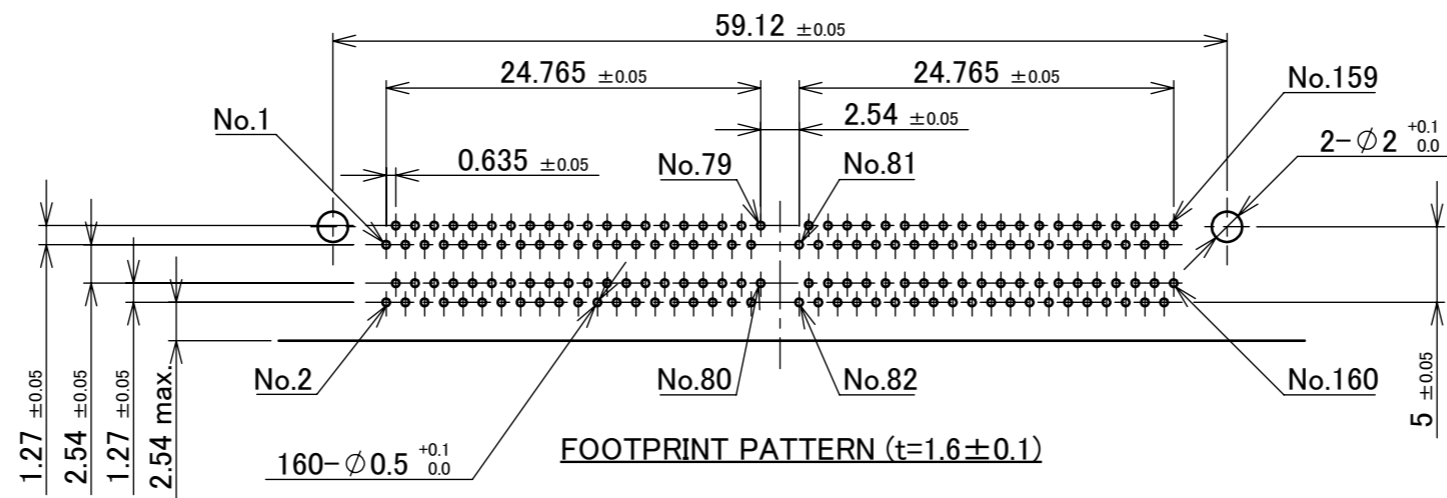
NO.	DESCRIPTION	MATERIAL	FINISH, REMARKS									
4	LOCATOR PLATE	PA	BLACK UL94V-0									
3	PLUG INSULATOR	PPS	BLACK UL94V-0									
2	PLUG CONTACT	COPPER ALLOY	Au PLATING									
1	PLUG SHELL	Zn ALLOY	Ni PLATING									
NO.	DESCRIPTION	MATERIAL	FINISH, REMARKS									
16	Z220921 Y.B Aug./16/'22 Y.H	ANGLE ±2° 6 OVER 30 MAX.	±0.3									
15	Z220241 M.H Mar./18/'22 Y.H	6 MAX. ±0.2 30 OVER 120 MAX.	±0.5									
14	Z191328 IMI Oct./01/'19 Y.S	GENERAL TOLERANCE.										
13	Z180835 R.H June/27/'18 TAK	DWG. T.Takano	DATE 1997/03/10									
12	Z171490 R.H Dec./25/'17 M.T	CHK. T.Harada										
11	Z170654 R.H June/08/'17 M.T	APP. K.Katabuchi										
REV.	ECN	BY	DATE	APP.	PROJECTION	SERIES No.	TITLE	SCALE	UNIT	SIZE	SHEET	REV.
					⊕	R2	MINIDOCK RIGHT ANGLE PLUG	2:1	mm	A3	1/5	16
REVISION RECORD					DWG. No. 30046			CUSTOMER COPY				

NOTES
 1. CONNECTOR TO BE MATED : 30047, 30056
 2. ALLOWANCE DIMENSION OF GUIDE PIN : 0.8 mm

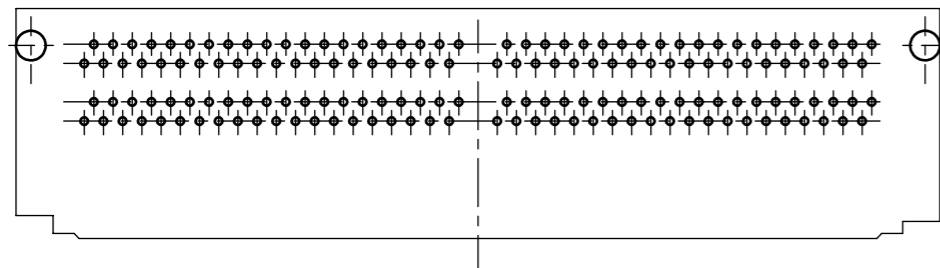
MATING
(S = 3/1)

ITEMS	SPECIFICATION
RATING VOLTAGE	250V AC (PER CONTACT PIN)
RATING AMPERAGE (FOR CONTACT)	0.5A AC/DC (PER CONTACT PIN)
OPERATING TEMPERATURE	208~358K(-65°C~+85°C)
OPERATING HUMIDITY	85% MAX.(NON-CONDENSING)
CONTACT RESISTANCE (FOR CONTACT)	INITIAL : 70mohm MAX. / AFTER TEST : \leq 25mohm MAX.
INSULATION RESISTANCE	INITIAL : 10,000Mohm MIN. / AFTER TEST : 1,000MIN.
DIELECTRIC WITHSTANDING VOLTAGE	AC500V 1min
DURABILITY	5,000 CYCLES
MATING FORCE (INITIAL / AFTER TEST)	0.9N/pos. MAX.
UNMATING FORCE (INITIAL / AFTER TEST)	0.059N/pos. MIN.
COPLANARITY	-
PRODUCT SPECIFICATION	PRS-1011
TEST REPORT	TR-9020
PACKING STANDARD	300-106
INSTRUCTION MANUAL	-
APPEARANCE CRITERIA No.	QLS-A***

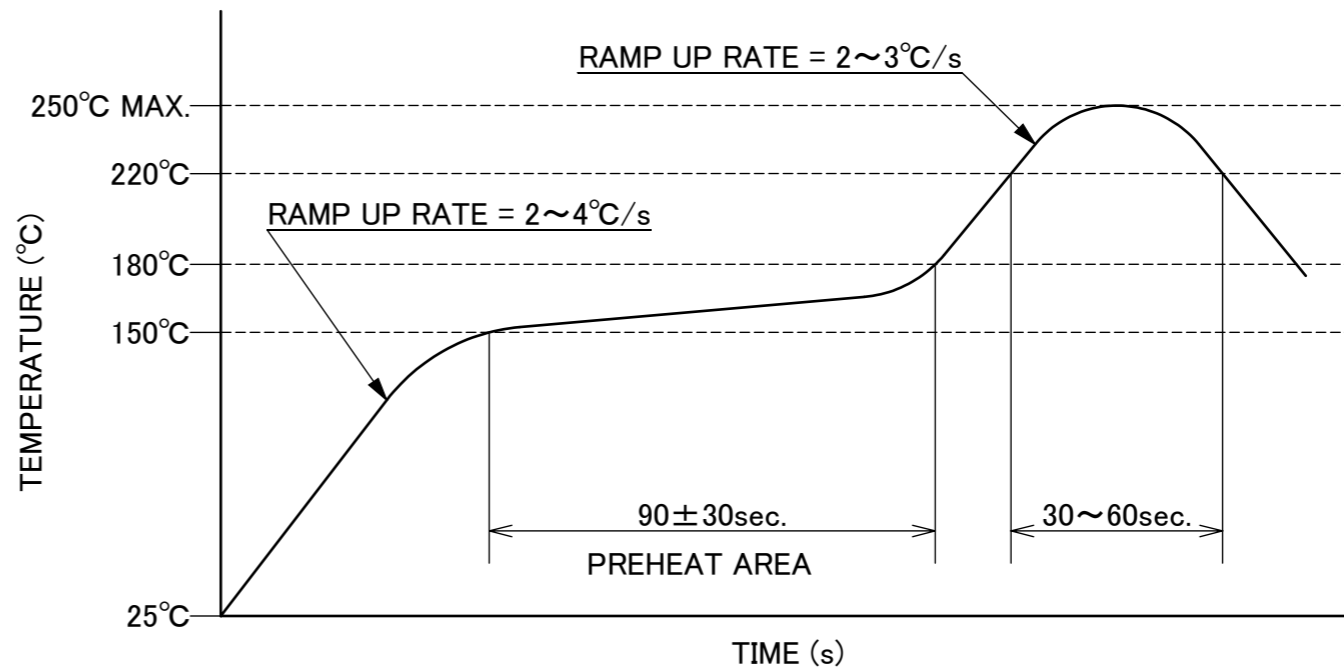
ANGLE	$\pm 2^\circ$	6 OVER 30 MAX.	± 0.3	PROJECTION 	SERIES No. R2	CUSTOMER COPY		
6 MAX.	± 0.2	30 OVER 120 MAX.	± 0.5					
GENERAL TOLERANCE.				TITLE MINIDOCK RIGHT ANGLE PLUG	SCALE	I-PEX		
DWG.	DATE							
CHK.								
APP.								
				DWG. No.	30046	SIZE A3	SHEET 2/5	REV. 16



ANGLE	±2°	6 OVER 30 MAX.	±0.3	PROJECTION ⊕	SERIES No. R2	CUSTOMER COPY			
6 MAX.	±0.2	30 OVER 120 MAX.	±0.5						
GENERAL TOLERANCE.				TITLE		SCALE	I-PEX		
DWG.	DATE			MINIDOCK RIGHT ANGLE PLUG		2:1			
CHK.						UNIT			
APP.				DWG. No. 30046		mm			
				SIZE	SHEET	REV.			
				A3	3/5	16			



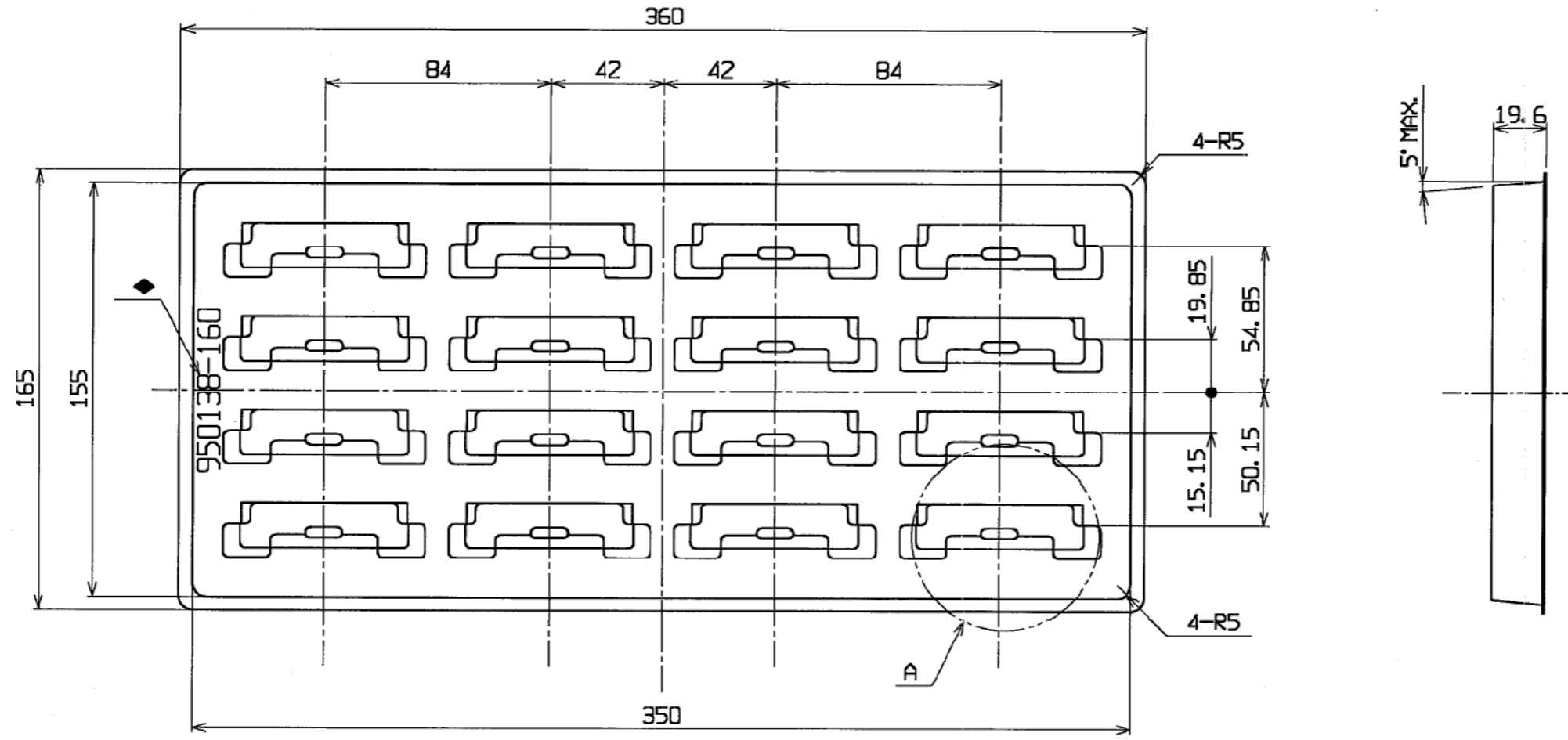
CONNECTOR ON RECOMMENDED FOOTPRINT PATTERN



REFLOW TEMPERATURE PROFILE
 SENJU METAL INDUSTRY CO., LTD. : M705-SHF(Sn96.5 Ag3.0 Cu0.5)

ANGLE	±2°	6 OVER 30 MAX.	±0.3	PROJECTION 	SERIES No. R2	CUSTOMER COPY			
6 MAX.	±0.2	30 OVER 120 MAX.	±0.5						
GENERAL TOLERANCE.				TITLE		SCALE			
DWG.	DATE			MINIDOCK RIGHT ANGLE PLUG		2:1			
CHK.						UNIT			
APP.						mm			
				DWG. No.	30046	SIZE	SHEET	REV.	
						A3	4/5	16	

PART NO.	Pos.	QTY. SHIPPING TRAY	QTY. PACKING CARTON
30046-160T-F	160P	16 × 3 = 48	48 × 4 = 192
30046-160T-0*F			



5	TRAY	PVC	-
NO.	DESCRIPTION	MATERIAL	FINISH , REMARKS

ANGLE	±2°	6 OVER 30 MAX.	±0.3	PROJECTION ⊕	SERIES No. R2	CUSTOMER COPY
	6 MAX.	±0.2	30 OVER 120 MAX.			
GENERAL TOLERANCE.				TITLE		SCALE
DWG.	DATE			MINIDOCK RIGHT ANGLE PLUG		1:X
CHK.						UNIT
APP.				DWG. No.		mm
				30046		SIZE
						A3
						SHEET
						5/5
						REV.
						16

Confidential C

I-PEX Inc.

QKE-DFE06-02 REV.12