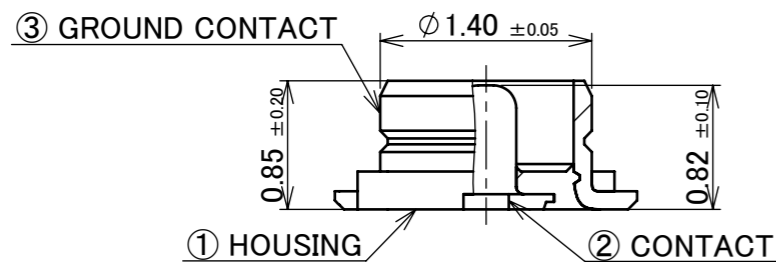
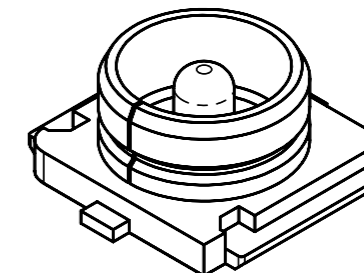
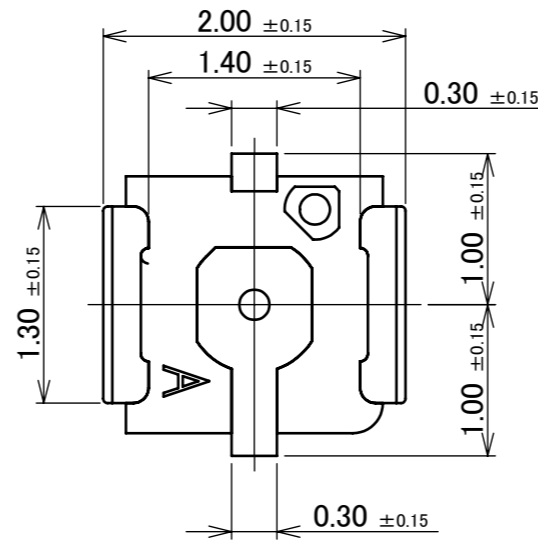
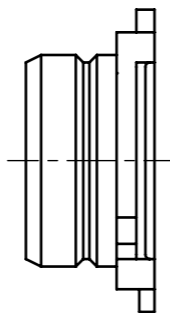
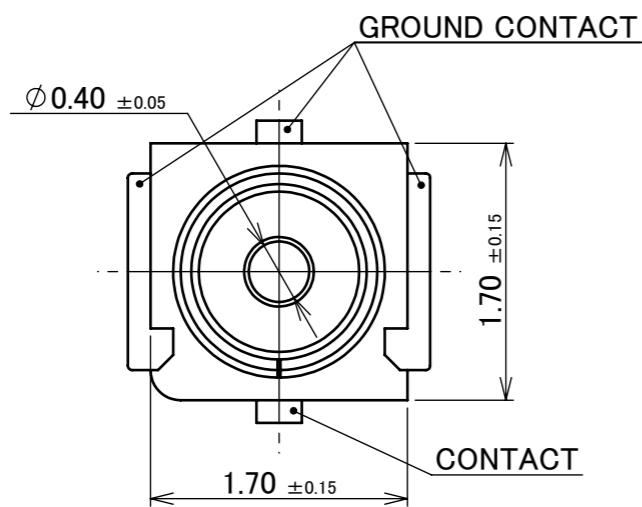
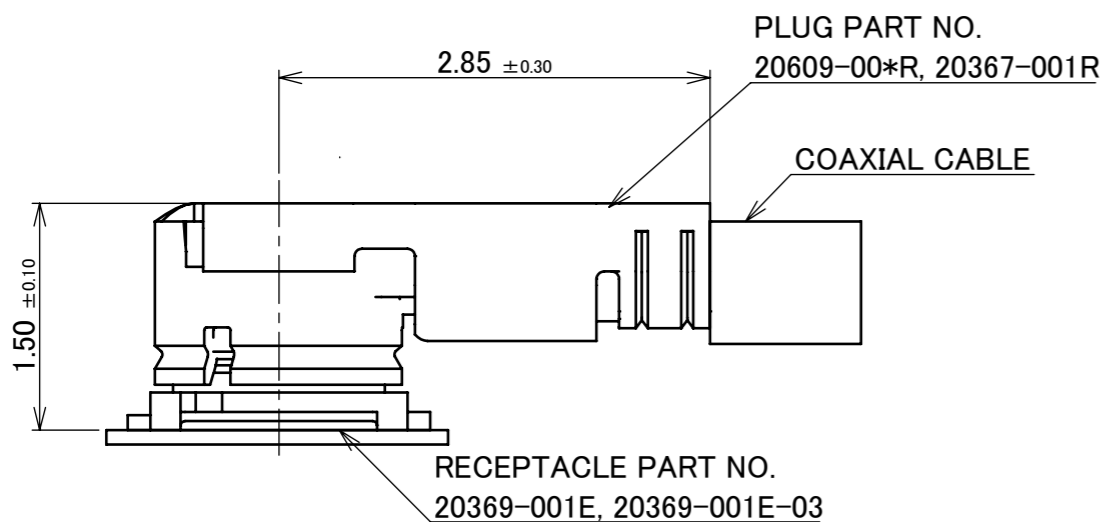


Recommended P/N 20369-001E-03

PART NO.	PACKING REEL	PACKING QUANTITY
20369-001E	CORRUGATED PAPER REEL	5,000/REEL
20369-001E-03	PLASTIC REEL	



NOTES.  
 1. APPLICABLE CONNECTOR  
 20609-00\*R  
 20367-001R  
 2. COPLANARITY : 0.1MAX.

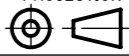


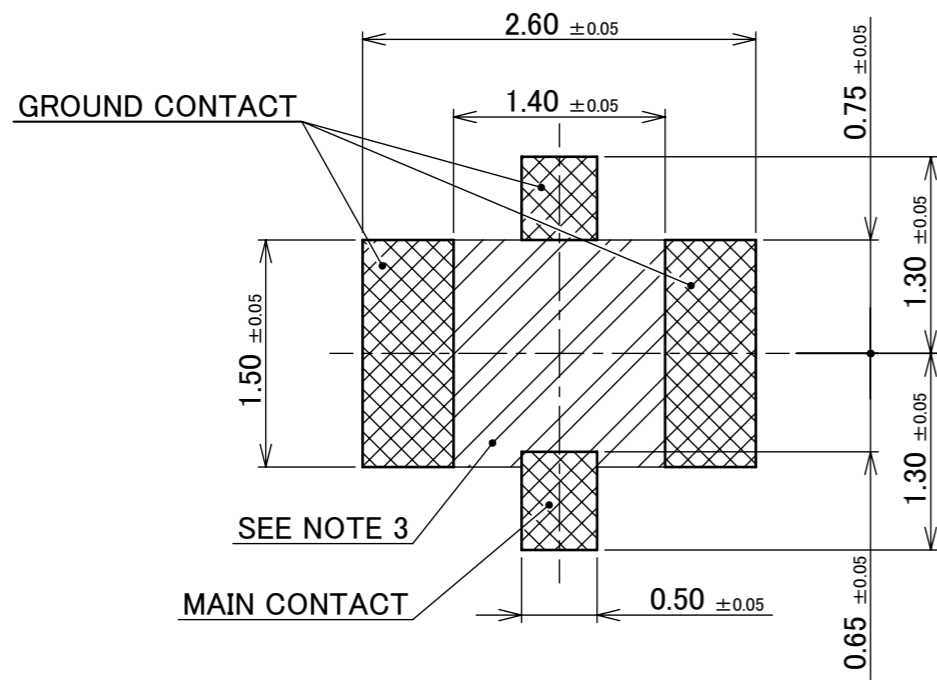
MATING CONDITION

NO.	DESCRIPTION	MATERIAL	FINISH , REMARKS
3	GROUND CONTACT	PHOSPHOR BRONZE	ALL OVER Ni 1.00 μ m MIN. CONTACT PART Au 0.03 μ m MIN. SOLDERING PART Au 0.03 μ m MIN.
2	CONTACT A	BRASS	ALL OVER Ni 1.00 μ m MIN. CONTACT PART Au 0.1 μ m MIN. SOLDERING PART Au 0.1 μ m MIN.
1	HOUSING	LCP	UL94V-0, BLACK

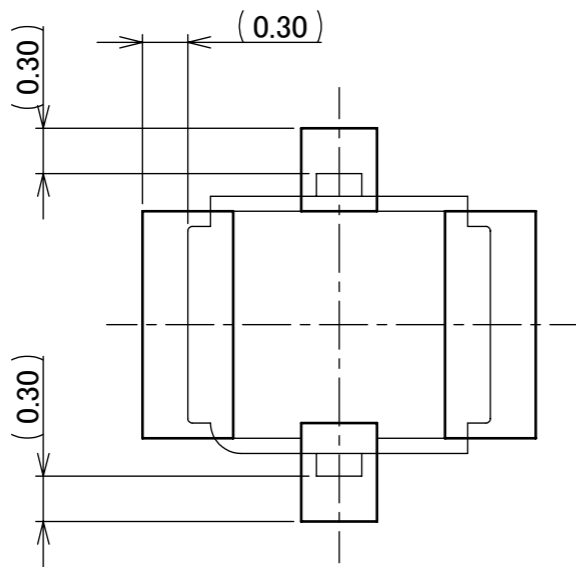
13	Z230866	Y.I	2023/07/25	M.T	ANGLE	±2°	6 OVER 30 MAX.	±0.3	PROJECTION ⊕	SERIES No. R3	CUSTOMER COPY					
12	Z220702	TSU	2022/06/21	Y.H	6 MAX.	±0.2	30 OVER 120 MAX.	±0.5								
11	Z190703	R.S	2019/06/05	Y.S	GENERAL TOLERANCE.				TITLE MHF® III RECEPTACLE	SCALE 20:1	UNIT mm	I-PEX				
10	Z181405	Y.I	2018/10/29	Ken	DWG.	T.Takano		DATE					2004/03/01			
9	Z151259	S.T	2015/11/17	Ken	CHK.	T.Harada										
8	Z150735	S.T	2015/06/29	Tom	APP.	K.Katabuchi										
REV.	ECN	BY	DATE	APP.	REVISION RECORD				DWG. No.	20369	SIZE	A3	SHEET	1/6	REV.	13

ITEMS	SPECIFICATION
APPLICABLE CONNECTOR PART No.	20609-002R
RATING VOLTAGE	60 V AC (R.M.S)
RATING FREQUENCY	DC ~ 9 GHz
OPERATING TEMPERATURE	233 ~ 363 K(-40°C ~ +90°C)
VSWR (MATED WITH SMA ADAPTER PART No. 90285-002)	1.30 MAX. AT 0.1~ 3GHz, 1.40 MAX. AT 3~6GHz, 1.60 MAX. AT 6~9GHz
MAIN CONTACT RESISTANCE	INITIAL : 20 mohm MAX. / AFTER TEST : $\triangleleft$ R 20 mohm MAX.
GROUND CONTACT RESISTANCE	INITIAL : 20 mohm MAX. / AFTER TEST : $\triangleleft$ R100 mohm MAX.
INSULATION RESISTANCE	INITIAL : 500 Mohm MIN. / AFTER TEST : 100 Mohm MIN.
DIELECTRIC WITHSTANDING VOLTAGE	AC 200 V 1 MINUTE
DURABILITY	30 CYCLES
TOTAL UNMATING FORCE (INITIAL / AFTER TEST)	INITIAL: 4 N MIN. / AFTER: 2 N MIN.
PRODUCT SPECIFICATION	PRS-2107
TEST REPORT	TR-15061
PACKING STANDARD	300-339
INSTRUCTION MANUAL	HIM-07002
APPEARANCE CRITERIA No.	QLS-A***

ANGLE	$\pm 2^\circ$	6 OVER 30 MAX.	$\pm 0.3$	PROJECTION 	SERIES No. R3	CUSTOMER COPY		
6 MAX.	$\pm 0.2$	30 OVER 120 MAX.	$\pm 0.5$					
GENERAL TOLERANCE.				TITLE MHF® III RECEPTACLE	SCALE -	<b>I-PEX</b>		
DWG.	DATE							
CHK.								
APP.								
				DWG. No.	20369	SIZE A3	SHEET 2/6	REV. 13

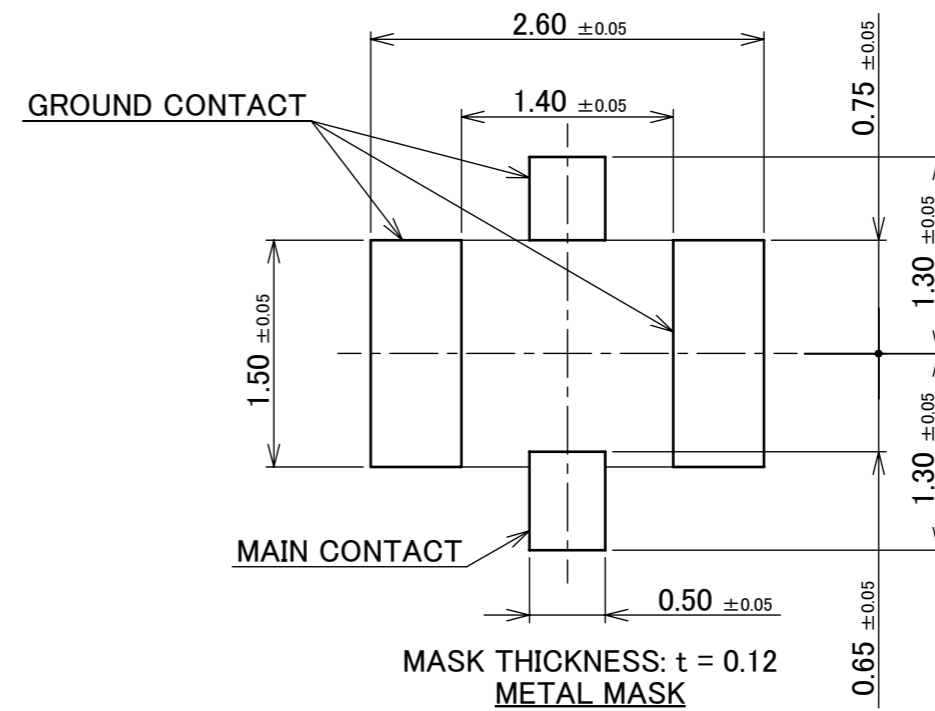


RECOMMENDED FOOTPRINT PATTERN

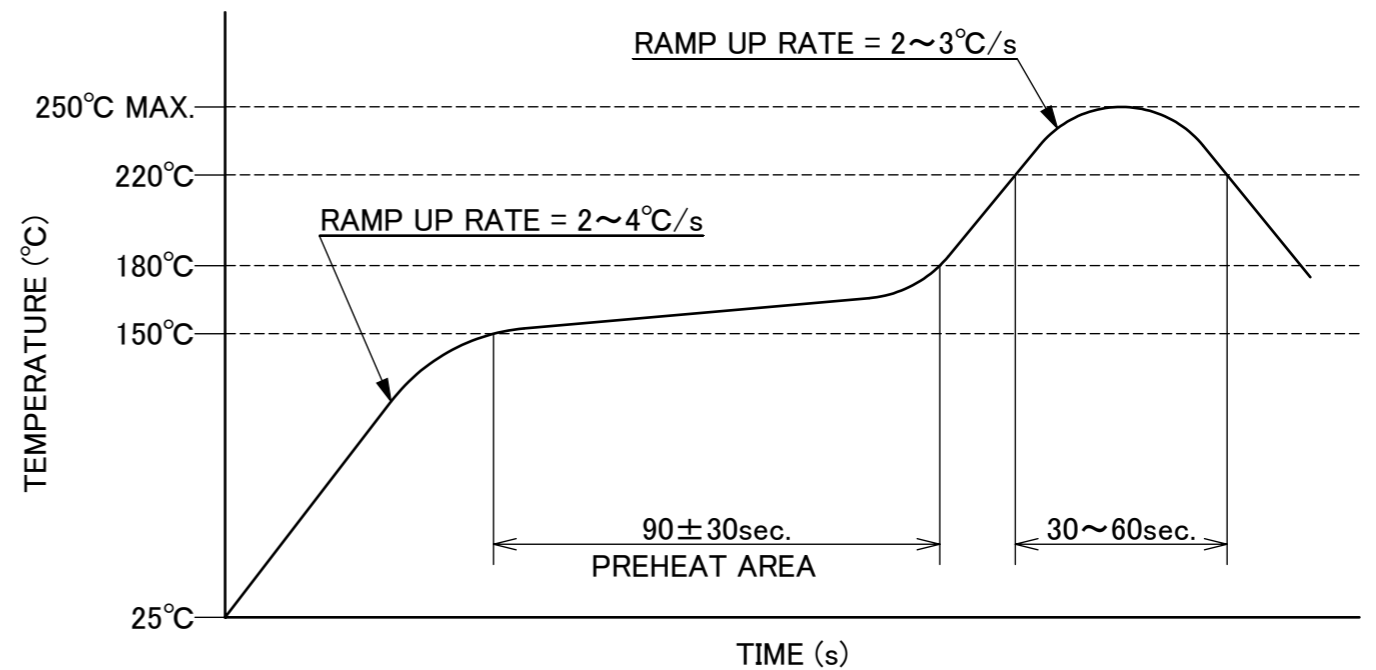


CONNECTOR ON RECOMMENDED FOOTPRINT PATTERN

NOTES  
3. NO GROUND, SIGNAL, AND RESIST IN THIS AREA.



RECOMMENDED FOOTPRINT PATTERN

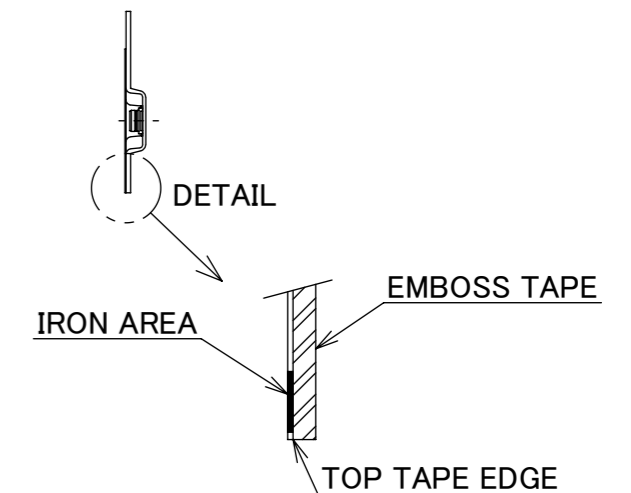
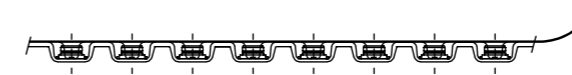
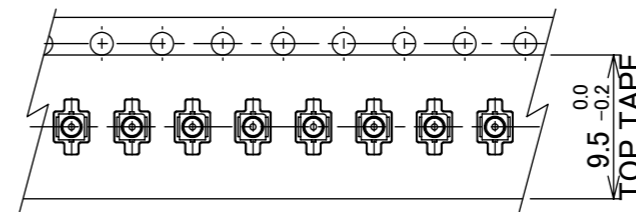
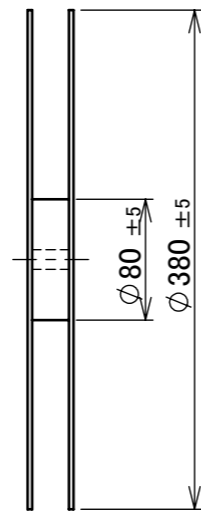
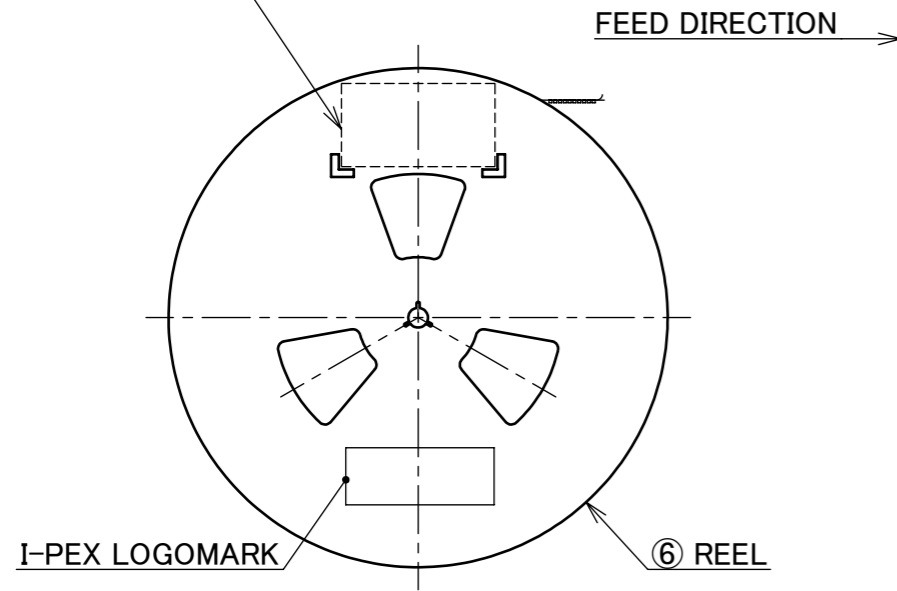


REFLOW TEMPERATURE PROFILE  
SENJU METAL INDUSTRY CO., LTD. : M705-SHF(Sn96.5 Ag3.0 Cu0.5)

ANGLE	±2°	6 OVER 30 MAX.	±0.3	PROJECTION ⊕	SERIES No. R3	CUSTOMER COPY			
6 MAX.	±0.2	30 OVER 120 MAX.	±0.5						
GENERAL TOLERANCE.				TITLE		SCALE	<b>I-PEX</b>		
DWG.	DATE			MHF® III RECEPTACLE		20:1			
CHK.						UNIT			
APP.				DWG. No. 20369		mm			
						SIZE	SHEET	REV.	
						A3	3/6	13	

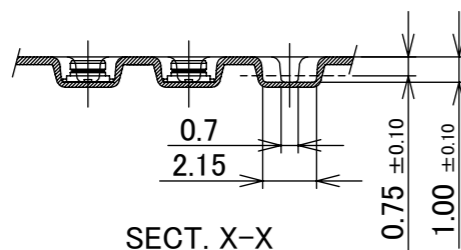
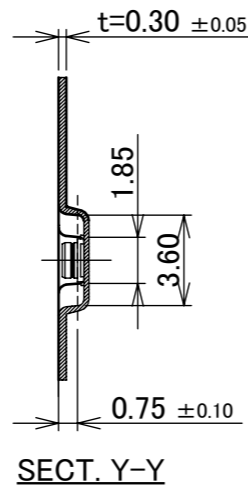
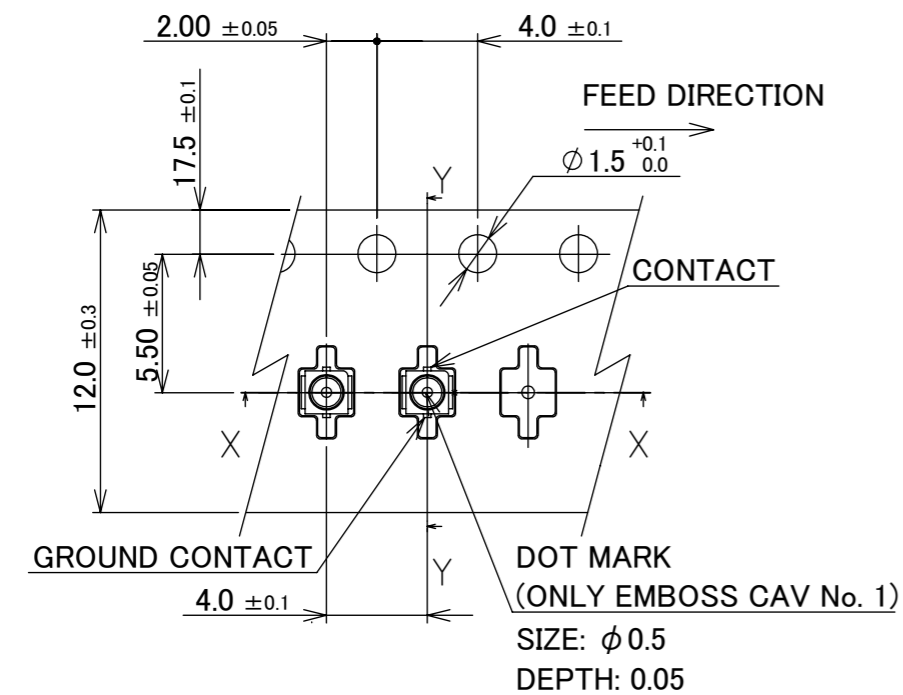
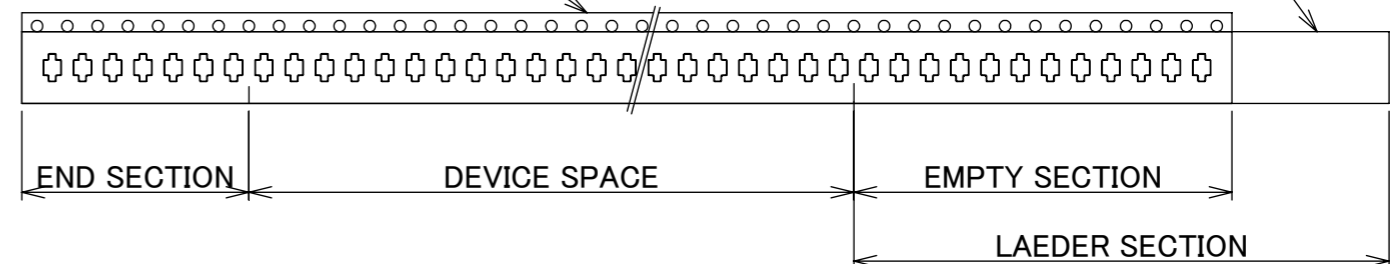
PART NO.	QTY. PER EMBOSS REEL (PIECES / REEL)	QTY. PER PACKING CARTON (REELS / CARTON)	REEL
20369-001E	5,000 PIECES / REEL	8 REELS / CARTON = 40,000 PIECES	CORRUGATED PAPER

⑦ PACKING LABEL



④ EMBOSS TAPING

⑤ TOP TAPE



NOTES

- ACCUMULATED PITCH OF FEED HOLE  $\pm 0.2\text{mm}$  AT 10 PITCH.
- DRAFT ANGLE OF EMBOSS TAPE  $5^\circ$  MAX.
- THE INSIDE R0.15 MAX.

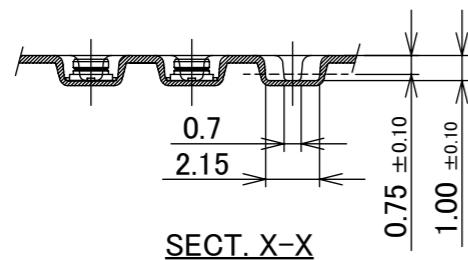
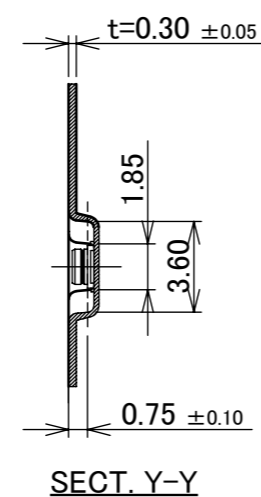
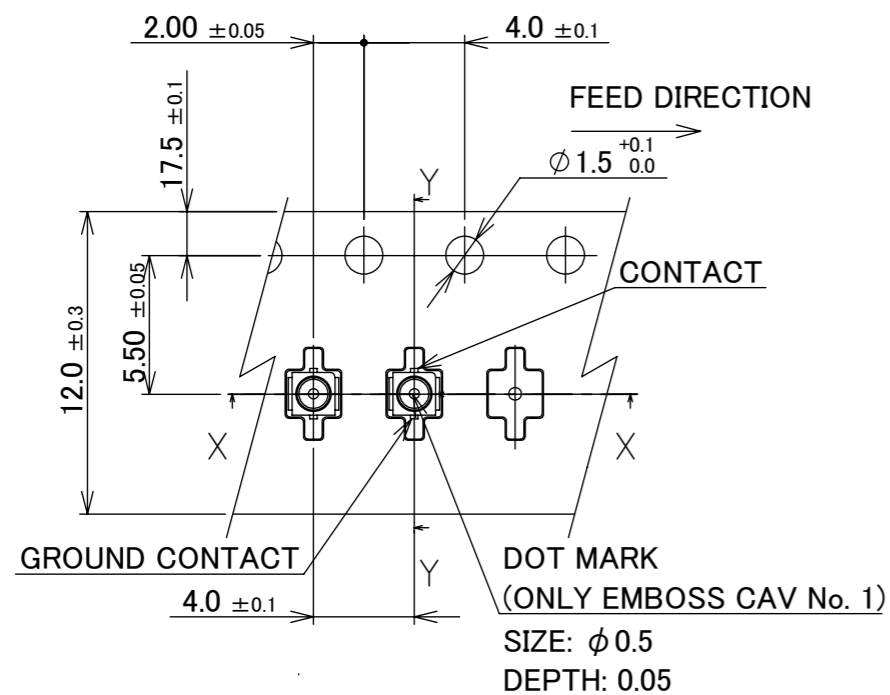
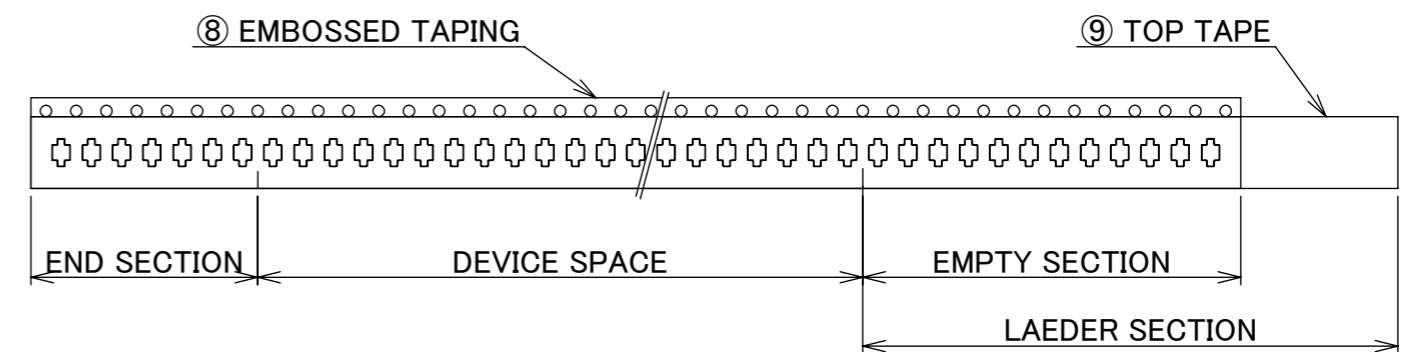
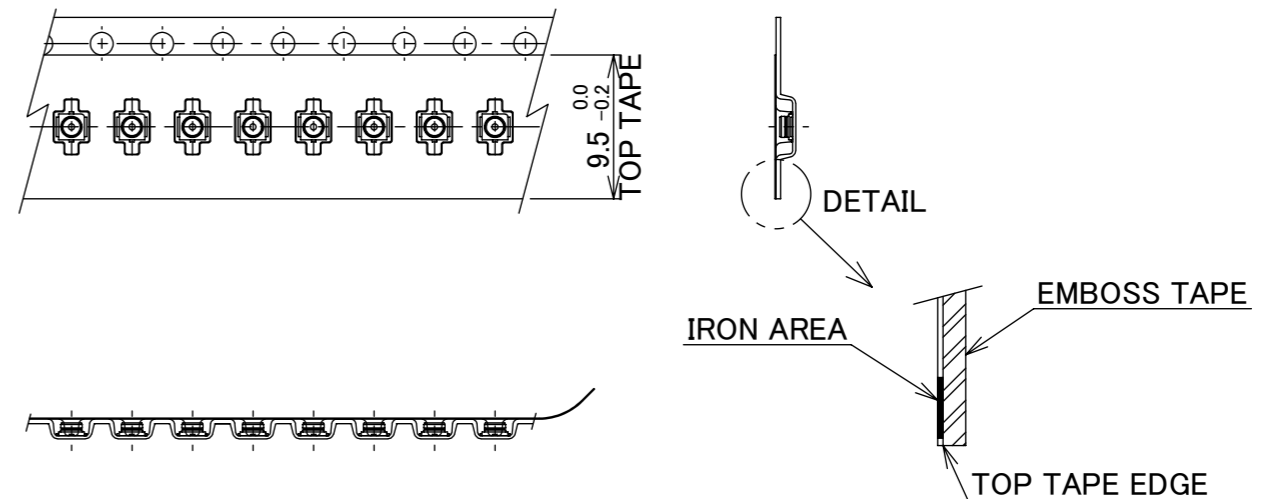
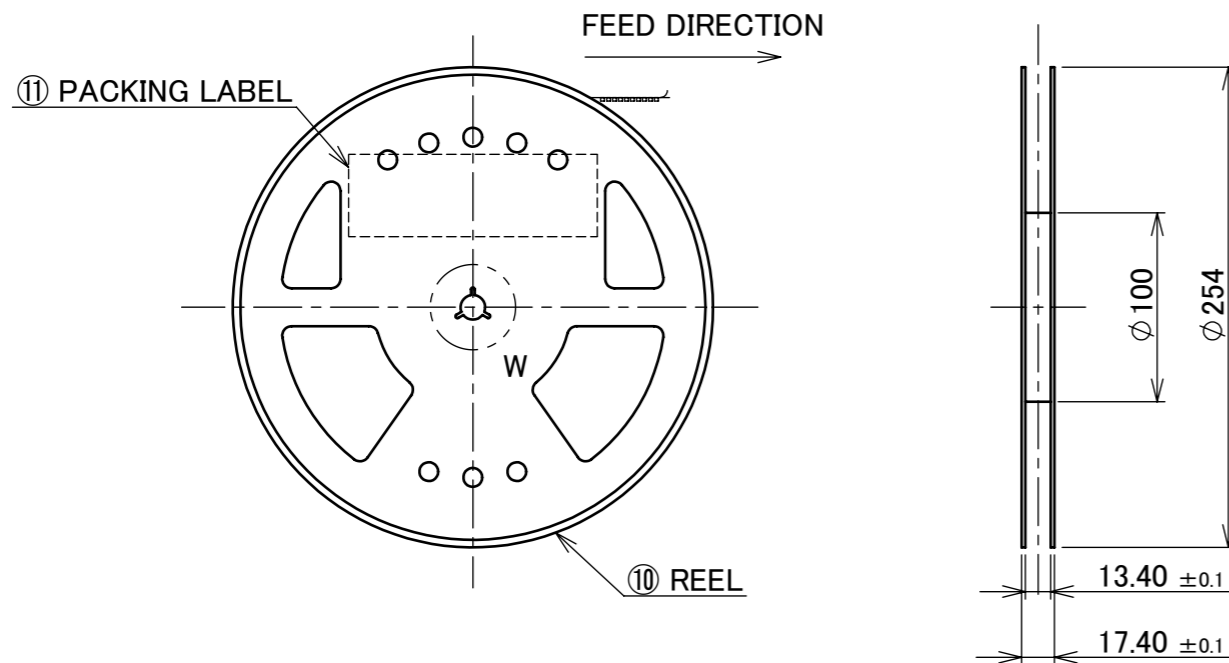
NOTES.

- TAPING SPECIFICATION FOLLOWS JIS C 0806 (IEC 60286-3).
- MAKE EMPTY SECTION OF LEADER AND END ON EACH END OF THE TAPE.
- TOP TAPE SHALL NOT STICK OUT FROM EMBOSS TAPE.
- TOP TAPE SHALL NOT COVER FEED HOLE.

NO.	DESCRIPTION	MATERIAL	FINISH, REMARKS
7	PACKING LABEL	-	-
6	REEL	CORRUGATED PAPER	-
5	TOP TAPE	PET $t=0.048$	ANTI-STATIC TYPE
4	EMBOSS TAPE	PS $t=0.3$	-

ANGLE	$\pm 2^\circ$	6 OVER 30 MAX.	$\pm 0.3$	PROJECTION 	SERIES No. R3	CUSTOMER COPY		
6 MAX.	$\pm 0.2$	30 OVER 120 MAX.	$\pm 0.5$					
GENERAL TOLERANCE.				TITLE MHF <sup>®</sup> III RECEPTACLE	SCALE 1:X			
DWG.	DATE							
CHK.								
APP.								
				DWG. No.	20369	SIZE A3	SHEET 4/6	REV. 13

PART NO.	QTY. PER EMBOSS REEL (PIECES / REEL)	QTY. PER PACKING CARTON (REELS / CARTON)	REEL
20369-001E-03	5,000 PIECES / REEL	8 REELS / CARTON = 40,000 PIECES	PLASTIC REEL



- NOTES.
- TAPING SPECIFICATION FOLLOWS JIS C 0806 (IEC 60286-3).
  - MAKE EMPTY SECTION OF LEADER AND END ON EACH END OF THE TAPE.
  - TOP TAPE SHALL NOT STICK OUT FROM EMBOSS TAPE.
  - TOP TAPE SHALL NOT COVER FEED HOLE.

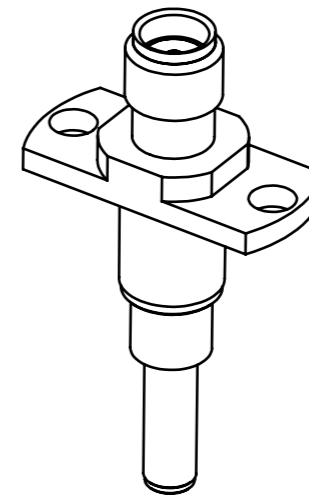
NO.	DESCRIPTION	MATERIAL	FINISH , REMARKS
11	PACKING LABEL	-	-
10	REEL	PS, WHITE	-
9	TOP TAPE	PET t=0.048 TRANSPARENCY	ANTI-STATIC TYPE
8	EMBOSS TAPE	PS t=0.3 TRANSPARENCY	ANTI-STATIC TYPE

- NOTES
- ACCUMULATED PITCH OF FEED HOLE  $\pm 0.2$ mm AT 10 PITCH.
  - DRAFT ANGLE OF EMBOSS TAPE 5° MAX.
  - THE INSIDE R0.15 MAX.

ANGLE	$\pm 2^\circ$	6 OVER 30 MAX.	$\pm 0.3$	PROJECTION ①	SERIES No. R3	CUSTOMER COPY		
6 MAX.	$\pm 0.2$	30 OVER 120 MAX.	$\pm 0.5$					
GENERAL TOLERANCE.				TITLE MHF® III RECEPTACLE	SCALE 1:X	I-PEX		
DWG.	DATE							
CHK.								
APP.								
				DWG. No.	20369	SIZE A3	SHEET 5/6	REV. 13



MHF III SMA ADAPTER  
PART NO. 90285-002



MHF III RECEPTACLE HIGH CYCLE SMA ADAPTER  
PART NO. 90491-001

ANGLE	±2°	6 OVER 30 MAX.	±0.3	PROJECTION ⊕	SERIES No. R3	CUSTOMER COPY		
6 MAX.	±0.2	30 OVER 120 MAX.	±0.5					
GENERAL TOLERANCE.				TITLE MHF® III RECEPTACLE	SCALE 2:1	UNIT <b>I-PEX</b>		
DWG.	DATE							
CHK.								
APP.								
				DWG. No.	20369	SIZE A3	SHEET 6/6	REV. 13