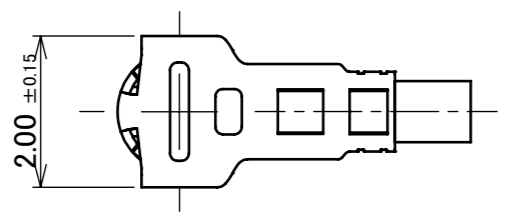
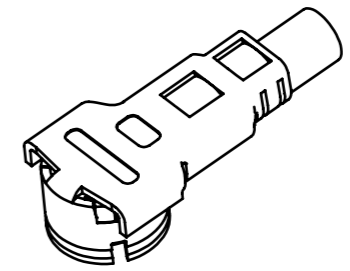
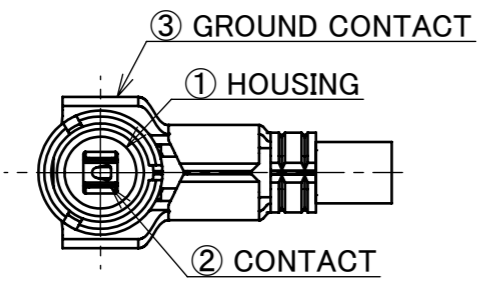
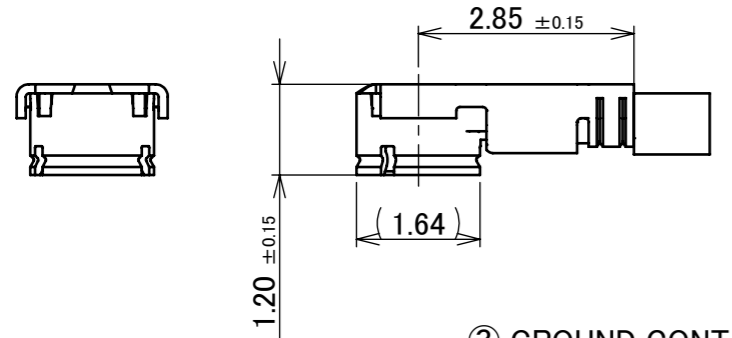
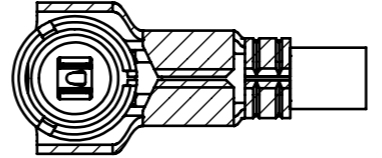
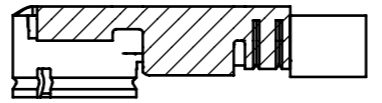
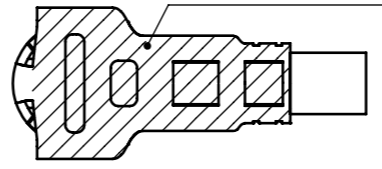


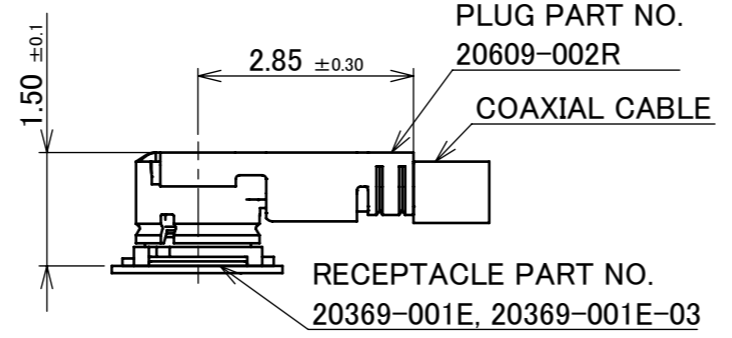
PART NO.
20609-002R



HATCHED AREA:
Ni PLATING AREA



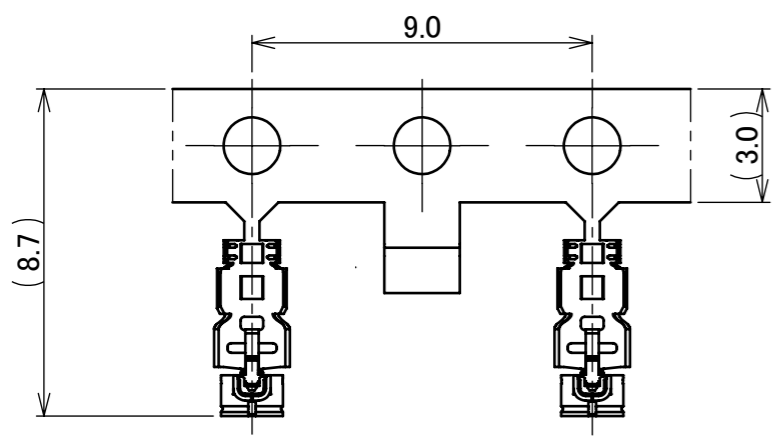
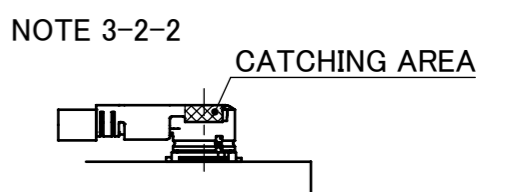
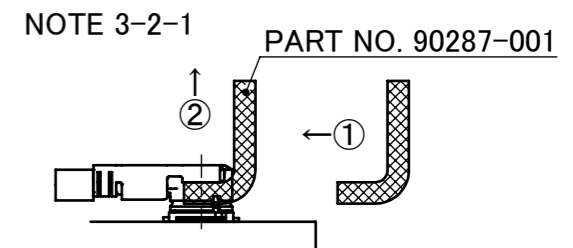
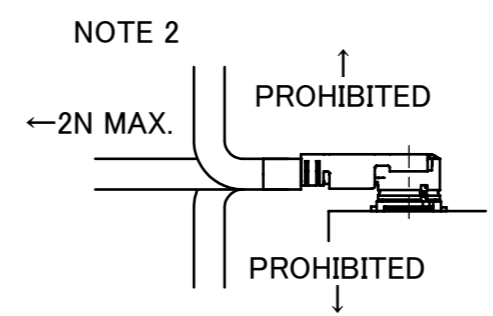
CABLE ASSEMBLY



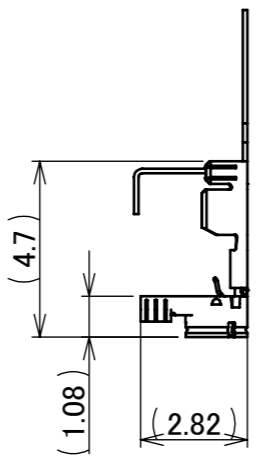
MATING CONDITION

NOTES.

1. APPLICABLE CONNECTOR: 20369-001E, 20369-001E-03
2. PERMISSIBLE LOAD OF CABLE AT MATING.
3. MATING AND UNMATING INSTRUCTION
 - 3-1. MATING
MATE THE CONNECTOR VERTICALLY AS MUCH AS POSSIBLE, ADJUSTING THE MATING AXIS OF PLUG AND RECEPTACLE. DO NOT SLANT MATE.
 - 3-2. UNMATING
 - 3-2-1. IN CASE OF UNMATING BY PULLING TOOL (P/N : 90287-001).
USE THE PULLING TOOL AS THE FOLLOWING DRAWING, AND PULL PLUG TO VERTICAL DIRECTION AS DIRECTLY AS POSSIBLE.
 - 3-2-2. IN CASE OF UNMATING DIRECTLY BY HAND.
CATCH THE CATCHING AREA OF PLUG, AND PULL PLUG TO VERTICAL DIRECTION AS DIRECTLY AS POSSIBLE.



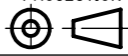
CARRIER CONDITION
S = 5:1

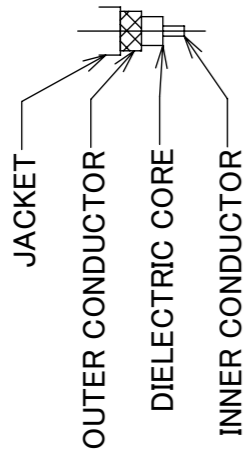
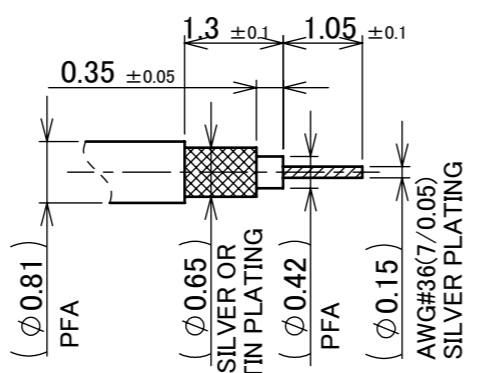
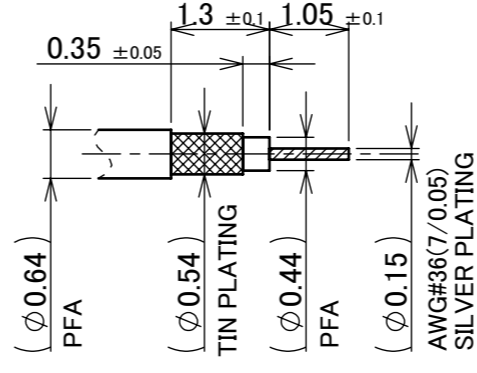
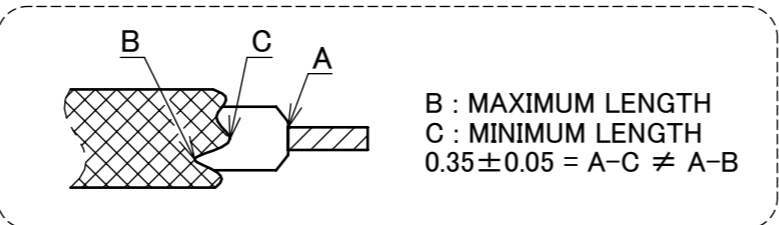
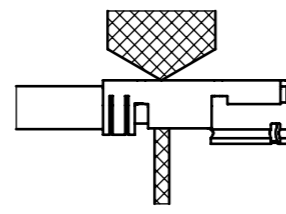
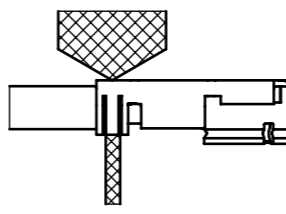
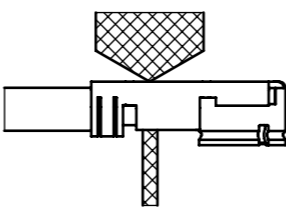
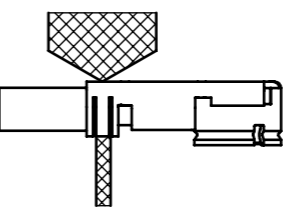


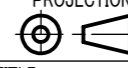
NO.	DESCRIPTION	MATERIAL	FINISH , REMARKS
3	GROUND CONTACT	PHOSPHOR BRONZE	ALL OVER Ni 1.00 μm MIN. CONTACT PART Au 0.02 μm MIN. [Ni PLATING AREA] Ni ONLY
2	CONTACT	PHOSPHOR BRONZE	ALL OVER Ni 1.00 μm MIN. CONTACT PART Au 0.03 μm MIN.
1	HOUSING	LCP	UL94V-0, WHITE

					ANGLE	±2°	6 OVER 30 MAX.	±0.3	PROJECTION	SERIES No.	CUSTOMER COPY					
						6 MAX.	±0.2	30 OVER 120 MAX.	±0.5	R4						
					GENERAL TOLERANCE.				TITLE	SCALE						
					DWG.	T.Yayoshi	DATE	2015/08/11	MHF® III PLUG NI TOP (0.81, 0.64)		10:1					
					CHK.	K.Yotsutani					UNIT					
					APP.	T.Takano					mm					
REV.	ECN	BY	DATE	APP.	REVISION RECORD				DWG. No.	20609	SIZE	A3	SHEET	1/5	REV.	2

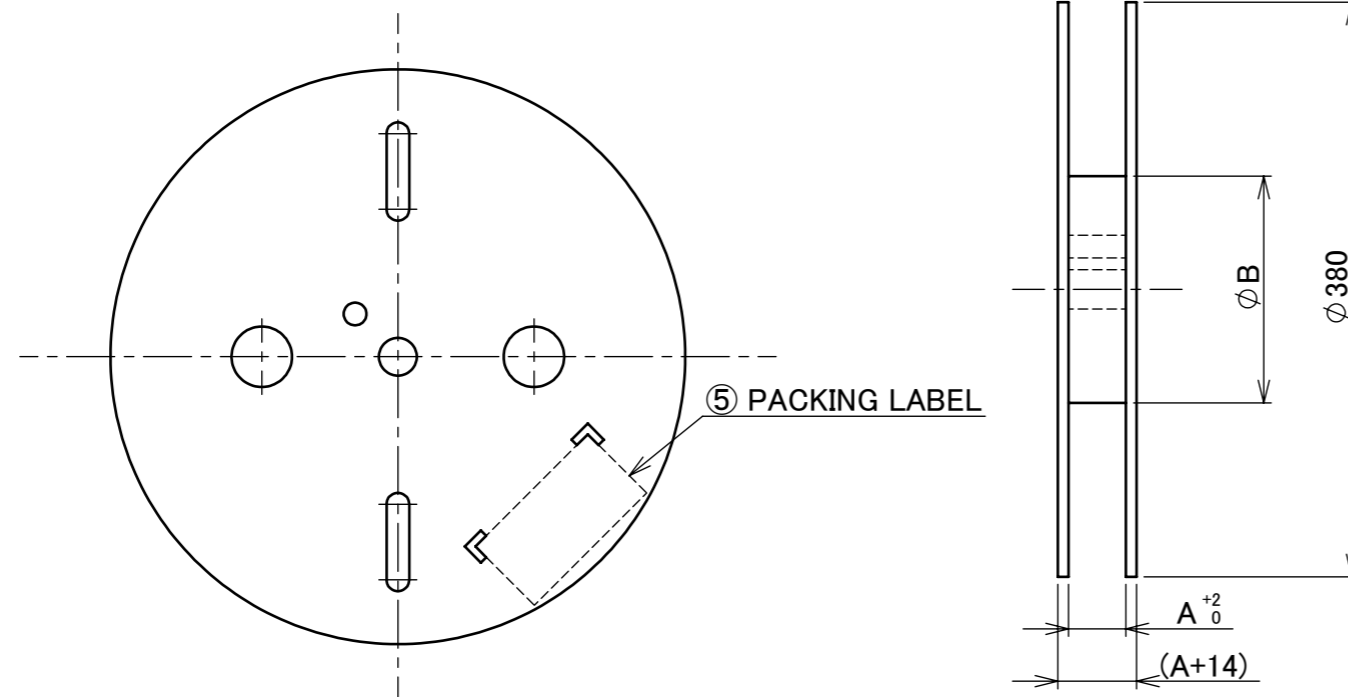
ITEMS	SPECIFICATION
APPLICABLE CONNECTOR PART No.	20369-001E
RATING VOLTAGE	60 V AC (R.M.S)
RATING FREQUENCY	DC ~ 9 GHz
OPERATING TEMPERATURE	233 ~ 363 K(-40°C ~ +90°C)
VSWR (MATED WITH SMA ADAPTER PART No. 90285-001)	1.30 MAX. AT 0.1~3 GHz, 1.50 MAX. AT 3~6 GHz, 1.70 MAX. AT 6~9 GHz
MAIN CONTACT RESISTANCE	INITIAL : 20 mohm MAX. / AFTER TEST : Δ R 20 mohm MAX.
GROUND CONTACT RESISTANCE	INITIAL : 20 mohm MAX. / AFTER TEST : Δ R100 mohm MAX.
INSULATION RESISTANCE	INITIAL : 500 Mohm MIN. / AFTER TEST : 100 Mohm MIN.
DIELECTRIC WITHSTANDING VOLTAGE	AC 200 V 1 MINUTE
DURABILITY	30 CYCLES
TOTAL UNMATING FORCE (INITIAL / AFTER TEST)	INITIAL: 4 N MIN. / AFTER: 2 N MIN.
CRIMP STRENGTH	7 N MIN.
PRODUCT SPECIFICATION	PRS-2107
TEST REPORT	TR-15061
PACKING STANDARD	300-340
INSTRUCTION MANUAL	HIM-07002
APPEARANCE CRITERIA No.	QLS-A***

ANGLE	$\pm 2^\circ$	6 OVER 30 MAX.	± 0.3	PROJECTION 	SERIES No. R4	CUSTOMER COPY		
6 MAX.	± 0.2	30 OVER 120 MAX.	± 0.5					
GENERAL TOLERANCE.				TITLE MHF® III PLUG NI TOP (0.81, 0.64)	SCALE	I-PEX		
DWG.	DATE				-			
CHK.					UNIT			
APP.					mm			
				DWG. No.	20609	SIZE	SHEET	REV.
						A3	2/5	2

PART NO.	20609-002R			
				
REQUIREMENTS	<p>MUST NOT USE SOLDER COATED INNER CONDUCTOR AND OUTER CONDUCTOR.</p>  <p>CHARACTERISTIC IMPEDANCE : 50 OHM BY TDR METHOD NOMINAL CAPACITANCE (REFERENCE VALUE) : 96pF/m CONDUCTOR RESISTANCE OF INNER CONDUCTOR AT 293 K (REFERENCE VALUE) : 1400 OHM/km INSULATION RESISTANCE : 1000 MEGA-OHM. km MIN. DIELECTRIC WITH STANCE VOLTAGE : OD 0.81 TYPE ...NO BREAKDOWN AT AC 1000 V FOR 1 MIN. OD 0.64 TYPE ...NO BREAKDOWN AT AC 500 V FOR 1 MIN.</p>			
BRAIDED SHIELD OF OUTER CONDUCTOR	SINGLE		SINGLE	
P/N OF SEMI AUTO TERMINATION MACHINE	90283-008 SEMI-AUTO		90283-006 SEMI-AUTO	
CRIMP HEIGHT	 USE FOR POINT MICROMETER CH-1 (i-Fit® PART) 0.89~0.93	 USE FOR POINT MICROMETER CH-2 (JACKET PART) 0.80~0.85	 USE FOR POINT MICROMETER CH-1 (i-Fit® PART) 0.78~0.82	 USE FOR POINT MICROMETER CH-2 (JACKET PART) 0.68~0.72

ANGLE	±2°	6 OVER 30 MAX.	±0.3	PROJECTION 	SERIES No. R4	CUSTOMER COPY		
	6 MAX.	±0.2	30 OVER 120 MAX.					±0.5
GENERAL TOLERANCE.				TITLE MHF® III PLUG NI TOP (0.81, 0.64)	SCALE	I-PEX		
DWG.	DATE				-			
CHK.					UNIT			
APP.					mm			
				DWG. No.	20609	SIZE	SHEET	REV.
						A3	3/5	2

PART NO.	A	B	QTY. PER EMBOSS REEL (PIECES / REEL)	QTY. PER PACKING CARTON (REELS / CARTON)
20609-002R	20	150	2,000 / REEL	5 REELS / CARTON = 10,000 pcs.

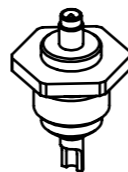


5	PACKING LABEL	-	-
4	REEL	CB	-
NO.	DESCRIPTION	MATERIAL	FINISH , REMARKS

ANGLE	±2°	6 OVER 30 MAX.	±0.3	PROJECTION ⊕	SERIES No. R4	CUSTOMER COPY		
6 MAX.	±0.2	30 OVER 120 MAX.	±0.5			TITLE MHF® III PLUG NI TOP (0.81, 0.64)	SCALE -	I-PEX
GENERAL TOLERANCE.				DWG. No. 20609	UNIT mm	SIZE A3	SHEET 4/5	
DWG.	DATE							
CHK.								
APP.								



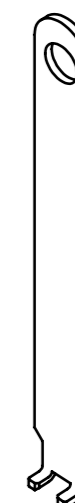
MHF III SMA ADAPTOR
PART NO. 90285-001



MHF III INSPECTION CONNECTOR
PART NO. 90286-001



FRONT SIDE



BACK SIDE

MHF III PULLING TOOL
PART NO. 90287-001

ANGLE	±2°	6 OVER 30 MAX.	±0.3	PROJECTION ⊕	SERIES No. R4	CUSTOMER COPY		
6 MAX.	±0.2	30 OVER 120 MAX.	±0.5					
GENERAL TOLERANCE.				TITLE MHF® III PLUG NI TOP (0.81, 0.64)	SCALE 2:1 UNIT mm	I-PEX		
DWG.	DATE							
CHK.								
APP.								
				DWG. No.	20609	SIZE A3	SHEET 5/5	REV. 2