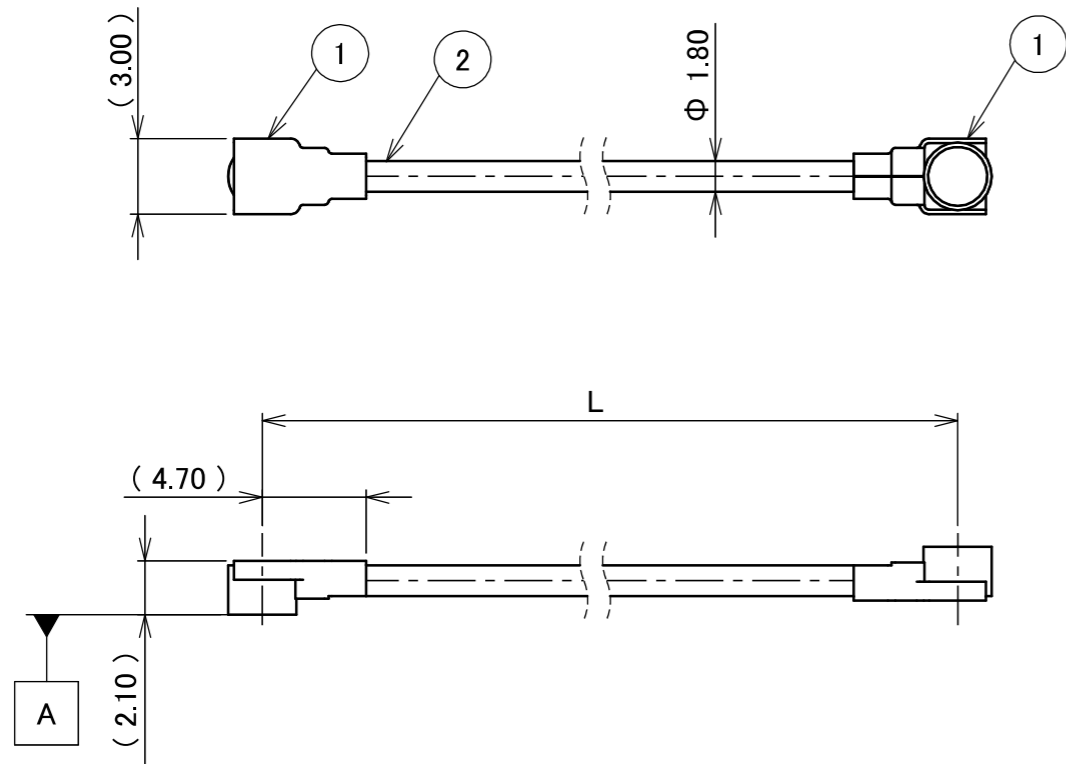
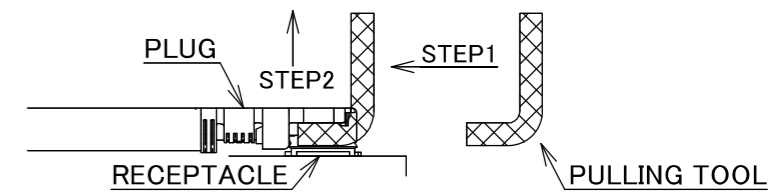


PART NO.	L
8-25-0855	300.00±3.0 mm

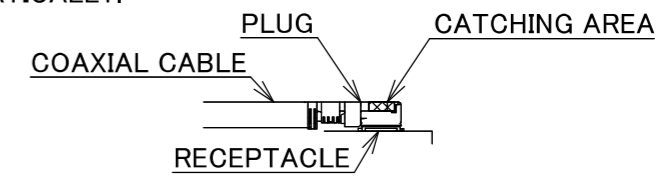
PLEASE CONTACT I-PEX FOR REQUESTS OTHER THAN THIS SPECIFICATIONS.  
PLEASE NOTE IF SPECIFICATIONS CHANGE, PART NO. WILL ALSO CHANGE.



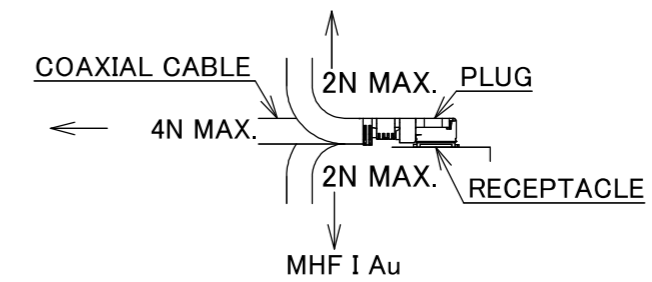
NOTES  
1. SUGGESTIONS FOR MATING & UNMATING OPERATION.  
1-1. MATING  
MATE THE CONNECTOR VERTICALLY,  
ALIGNING THE MATING AXIS ON PLUG AND RECEPTACLE.  
DO NOT SLANT MATE.  
1-2. UNMATING  
1-2-1.  
UNMATING BY PULLING TOOL.  
[P/N 90192-001 (MHF I), ]  
USE THE PULLING TOOL AS THE FOLLOWING, AND  
PULL PLUG TO VERTICAL DIRECTION AS DIRECTLY AS POSSIBLE.



1-2-2.  
UNMATING DIRECTLY BY HAND.  
HOLD THE CATCHING AREA ON PLUG AND PULL THE PLUG  
VERTICALLY.



- 2. PACKING : PLASTIC BAG
- 3. PERMISSIBLE LOAD ON THE CABLE AFTER MATING



4. CABLE CRIMP STRENGTH : 15N MIN.

2	CABLE	1	AWG#30 Φ 1.80, BRAIDED SHIELD , BLACK
1	CONNECTOR-1, 2	2	MHF I Au
NO.	DESCRIPTION	QTY	REMARK

					ANGLE	±2°	6 OVER 30 MAX.	±0.3	PROJECTION ⊕	SERIES No. H-250062C	CUSTOMER COPY			
						6 MAX.	±0.2	30 OVER 120 MAX.						±0.5
					GENERAL TOLERANCE.				TITLE					
					DWG.	M.Toida			DATE			2026/01/27		
					CHK.	T.Takuno			TITLE			MHF® I-I CABLE180-2		
0	ZH00372	TOI	2026/01/27	-	APP.	K.Yufu			DWG. No.			8-25-0855		
REVISION RECORD									SCALE			X:1		
									UNIT			mm		
									SIZE			A3		
									SHEET			1/1		
									REV.			0		



Confidential C

I-PEX Inc.

QKE-DFE06-02 REV.12