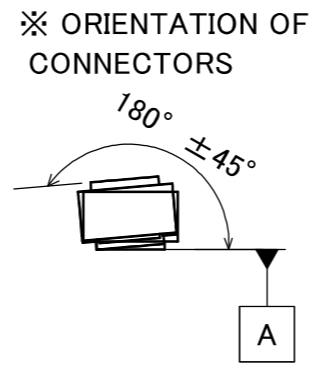
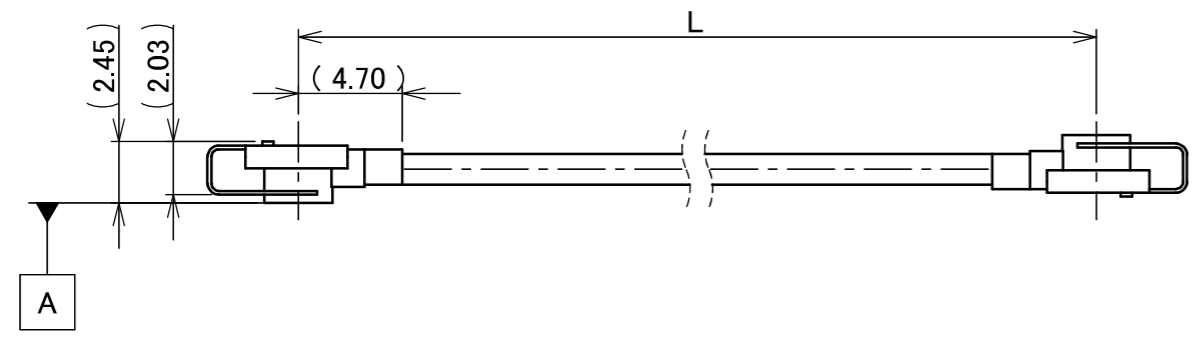
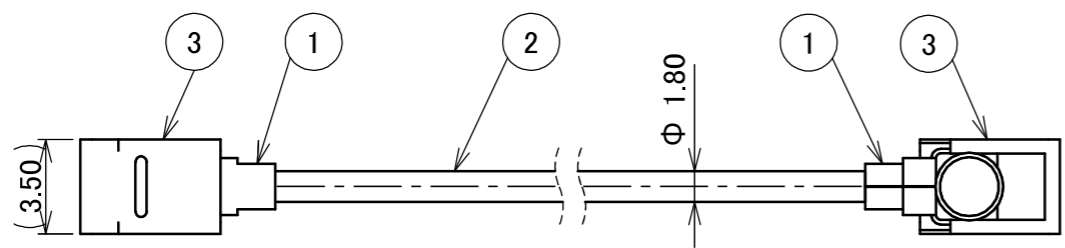
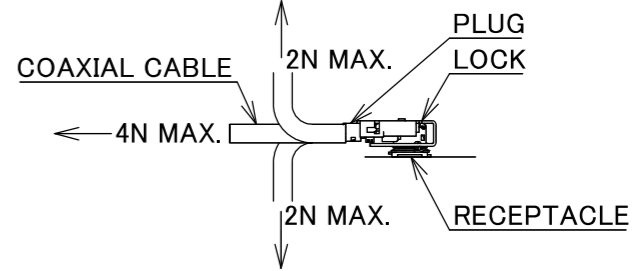


PART NO.	L
8-25-0919	300.00±3.0 mm

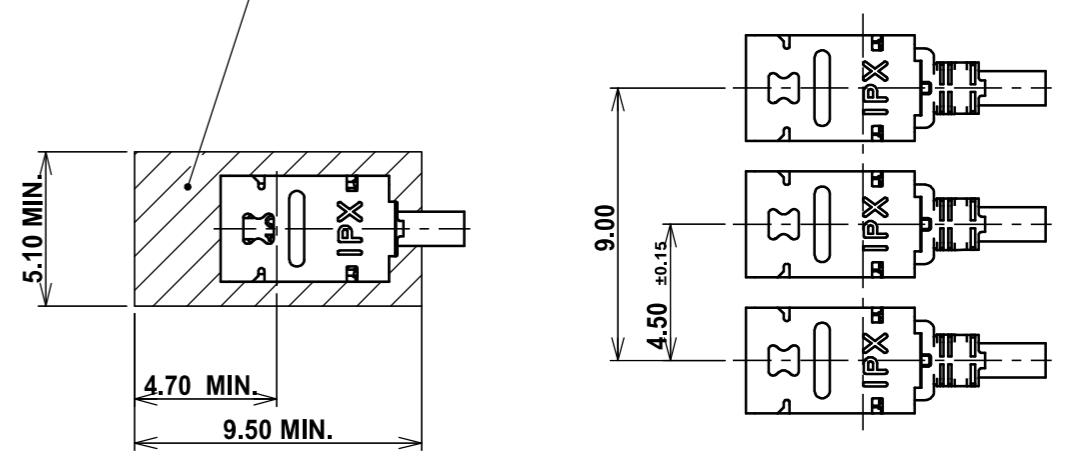
PLEASE CONTACT I-PEX FOR REQUESTS OTHER THAN THIS SPECIFICATIONS.
PLEASE NOTE IF SPECIFICATIONS CHANGE, PART NO. WILL ALSO CHANGE.

- NOTES
1. PACKING : PLASTIC BAG
 2. PERMISSIBLE LOAD ON THE CABLE AFTER MATING
 3. CABLE CRIMP STRENGTH : 15N MIN.
 4. TO OPERATE LOCK PART FOLLOW I-PEX INSTRUCTION MANUAL HIM-17020.
 5. DO NOT ROTATE THE PLUG IN THE MATING CONDITION.



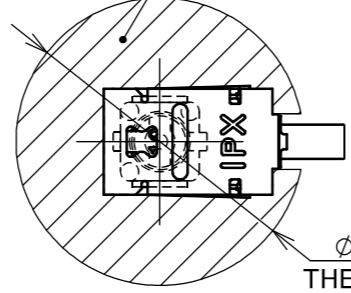
MULTIPLE CONNECTORS LAYOUT

COMPONENTS PLACEMENT PROHIBITED AREA
REQUIRED AREA FOR RECOMMENDED JIG TO OPERATE
MHF I LK HARNESS IN 4.50±0.15 mm PITCH (M.2 PITCH) SMOOTHLY.
JIG PART NUMBER: 91492-0001

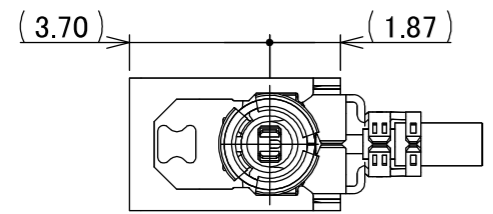


SINGLE CONNECTOR LAYOUT

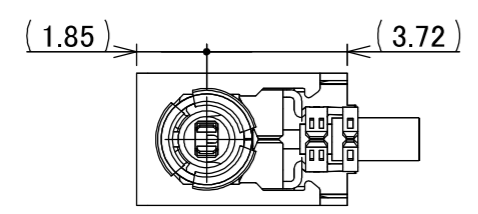
COMPONENTS PLACEMENT PROHIBITED AREA
FOR PLUG 360° ROTATION AND UNMATING AND LOCK
JIG PART NUMBER: 91026-0001, 91492-0001



Φ 9.50 MIN.
THE CENTER OF THE CIRCLE MATCHES
THE CENTER OF RECEPTACLE.



UNLOCKED CONDITION



LOCKED CONDITION

DO NOT MATE WITH RECEPTACLE
UNDER THIS LOCKED CONDITION.

**MATING AND LOCK CONDITION
WITH MHF I LK HARNESS**

**MATING AND LOCK CONDITION
WITH MHF I LK HARNESS NARROW PITCH**

**MHF I LK HARNESS UNLOCK CONDITION
NARROW PITCH DIMENSIONS**

3	LOCK PART	2	-
2	CABLE	1	AWG#30 Φ 1.80, BRAIDED SHIELD , BLACK
1	CONNECTOR-1, 2	2	MHF I Au
NO.	DESCRIPTION	QTY	REMARK

					ANGLE	±2°	6 OVER 30 MAX.	±0.3	PROJECTION ⊕	SERIES No. H-250069C	CUSTOMER COPY					
						6 MAX.	±0.2	30 OVER 120 MAX.				±0.5				
					GENERAL TOLERANCE.				TITLE MHF® I-I CABLE180-2 +LK	SCALE X:1	UNIT mm	I-PEX				
					DWG.	DATE							DWG. No. 8-25-0919	SIZE A3	SHEET 1/1	REV. 0
					Y.Nishimura	2026/02/02										
0	ZH00391	Y.Ni	2026/02/02	-	CHK.	T.Takuno										
REV.	ECN	BY	DATE	APP.	APP.	K.Yufu										



Confidential C

I-PEX Inc.

QKE-DFE06-02 REV.12