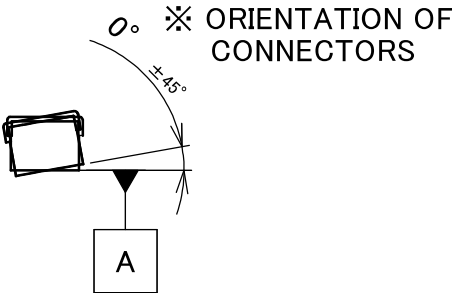
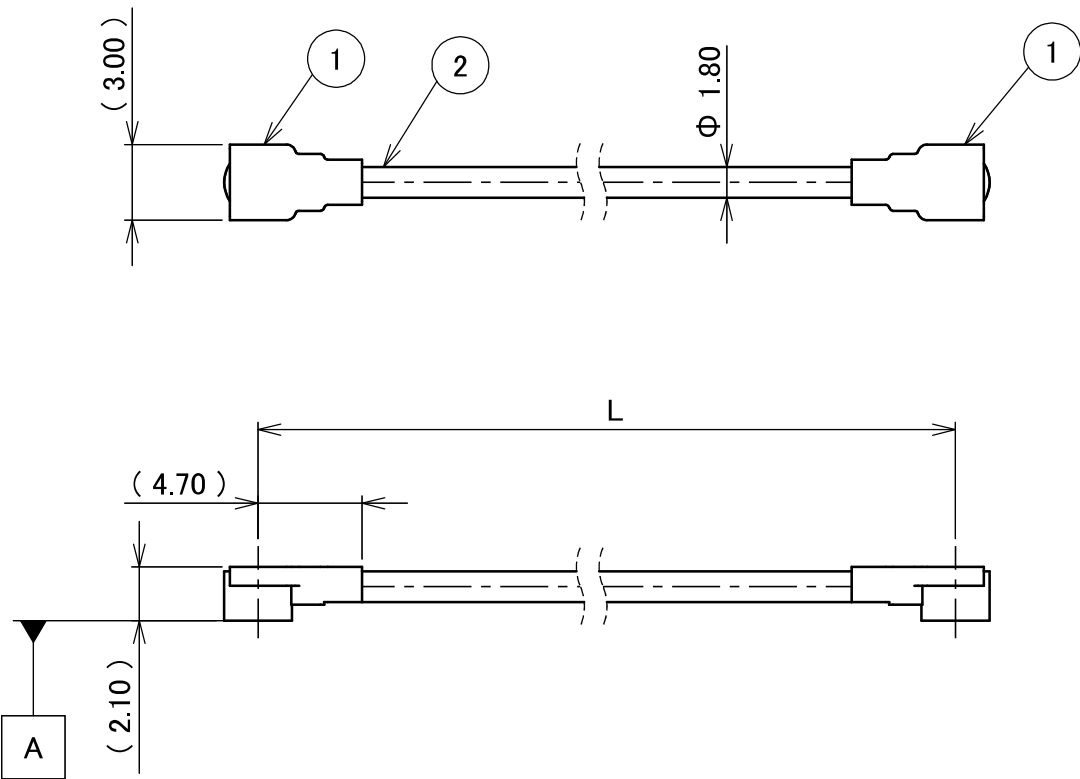
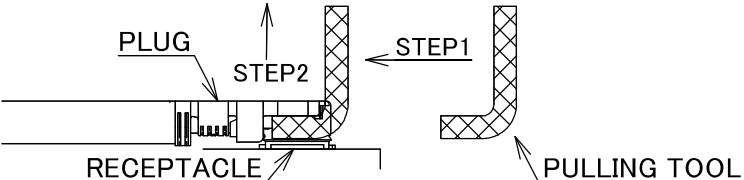


PART NO.	L
8-25-0858	100.00±1.0 mm

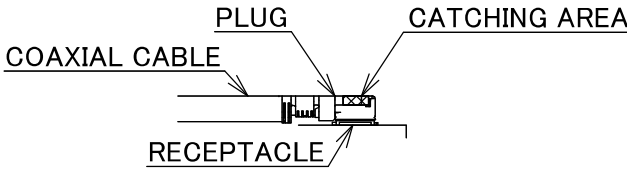
PLEASE CONTACT I-PEX FOR REQUESTS OTHER THAN THIS SPECIFICATIONS.
PLEASE NOTE IF SPECIFICATIONS CHANGE, PART NO. WILL ALSO CHANGE.



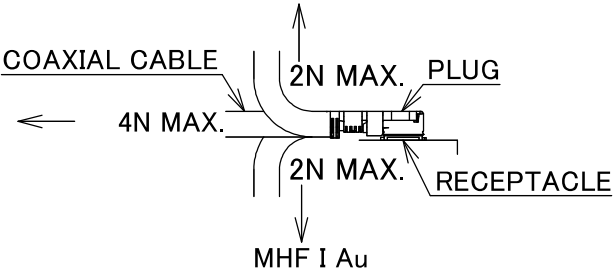
- NOTES
1. SUGGESTIONS FOR MATING & UNMATING OPERATION.
- 1-1. MATING
MATE THE CONNECTOR VERTICALLY,
ALIGNING THE MATING AXIS ON PLUG AND RECEPTACLE.
DO NOT SLANT MATE.
- 1-2. UNMATING
1-2-1.
UNMATING BY PULLING TOOL.
[P/N 90192-001 (MHF I),]
USE THE PULLING TOOL AS THE FOLLOWING, AND
PULL PLUG TO VERTICAL DIRECTION AS DIRECTLY AS POSSIBLE.



- 1-2-2.
UNMATING DIRECTLY BY HAND.
HOLD THE CATCHING AREA ON PLUG AND PULL THE PLUG
VERTICALLY.




2. PACKING : PLASTIC BAG
3. PERMISSIBLE LOAD ON THE CABLE AFTER MATING



4. CABLE CRIMP STRENGTH : 15N MIN.

2	CABLE	1	AWG#30 Φ 1.80, BRAIDED SHIELD , BLACK
1	CONNECTOR-1, 2	2	MHF I Au
NO.	DESCRIPTION	QTY	REMARK

					ANGLE	±2°	6 OVER 30 MAX.	±0.3		SERIES No.	CUSTOMER COPY				
					6 MAX.	±0.2	30 OVER 120 MAX.	±0.5		H-250061A					
					GENERAL TOLERANCE.				TITLE MHF® I-I CABLE180-1			SCALE	I-PEX		
					DWG.	DATE						X:1			
					Y.Nishimura 2025/12/05							UNIT			
					CHK. T.Takuno							mm			
0	ZH00207	Y.Ni	2025/12/05	-	APP.				DWG. No.	8-25-0858			SIZE	SHEET	REV.
REVISION RECORD					K.Yufu							A3	1/1		0



Halogen Free



RoHS Compliant

Confidential C

I-PEX Inc.

QKE-DFFDE06-02 REV.12