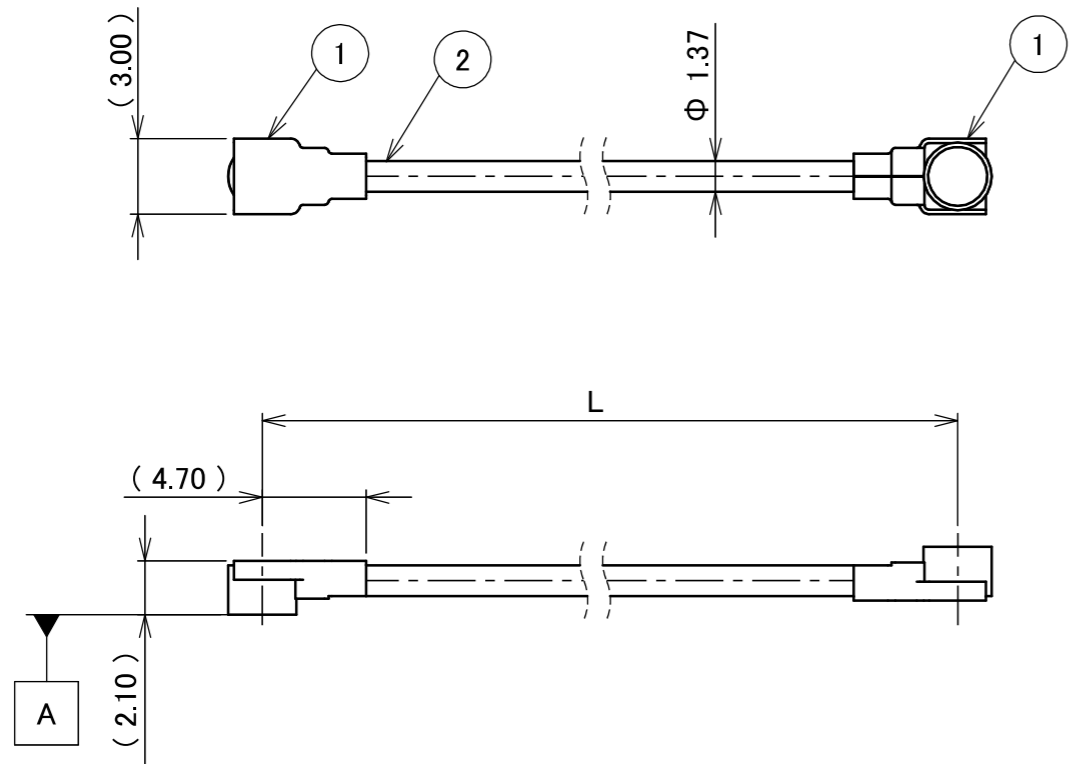
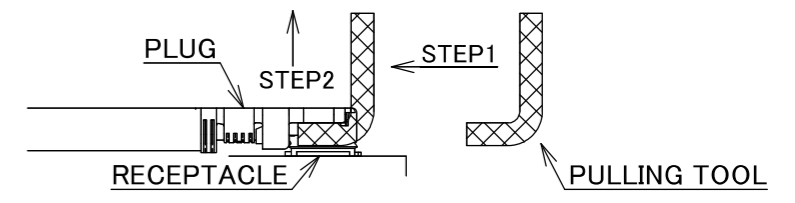


PART NO.	L
8-25-0847	300.00±3.0 mm

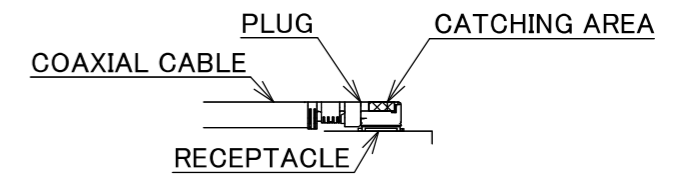
PLEASE CONTACT I-PEX FOR REQUESTS OTHER THAN THIS SPECIFICATIONS.  
PLEASE NOTE IF SPECIFICATIONS CHANGE, PART NO. WILL ALSO CHANGE.



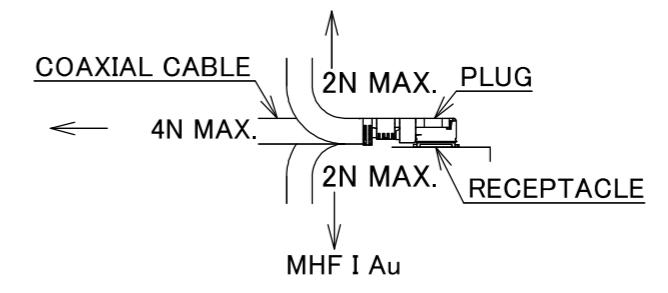
NOTES  
1. SUGGESTIONS FOR MATING & UNMATING OPERATION.  
1-1. MATING  
MATE THE CONNECTOR VERTICALLY,  
ALIGNING THE MATING AXIS ON PLUG AND RECEPTACLE.  
DO NOT SLANT MATE.  
1-2. UNMATING  
1-2-1.  
UNMATING BY PULLING TOOL.  
[P/N 90192-001 (MHF I), ]  
USE THE PULLING TOOL AS THE FOLLOWING, AND  
PULL PLUG TO VERTICAL DIRECTION AS DIRECTLY AS POSSIBLE.



1-2-2.  
UNMATING DIRECTLY BY HAND.  
HOLD THE CATCHING AREA ON PLUG AND PULL THE PLUG  
VERTICALLY.



2. PACKING : PLASTIC BAG  
3. PERMISSIBLE LOAD ON THE CABLE AFTER MATING



4. CABLE CRIMP STRENGTH : 15N MIN.

2	CABLE	1	AWG#30 Φ 1.37, BRAIDED SHIELD , BLACK
1	CONNECTOR-1, 2	2	MHF I Au
NO.	DESCRIPTION	QTY	REMARK

					ANGLE	±2°	6 OVER 30 MAX.	±0.3	PROJECTION ⊕	SERIES No. H-250060D	CUSTOMER COPY		
						6 MAX.	±0.2	30 OVER 120 MAX.					
					GENERAL TOLERANCE.				TITLE				
					DWG.	DATE			MHF®				
					Y.Nishimura			2026/01/29			I-I CABLE137-2		
					CHK.	T.Takuno			SCALE				
					APP.			K.Yufu			X:1		
					REV.	ECN	BY	DATE	APP.	UNIT			
					REVISION RECORD			8-25-0847			mm		
					K.Yufu			DWG. No.			I-PEX		
					8-25-0847			A3			SHEET		
					REV. 0			1/1			REV.		



Confidential C

I-PEX Inc.

QKE-DFE06-02 REV.12