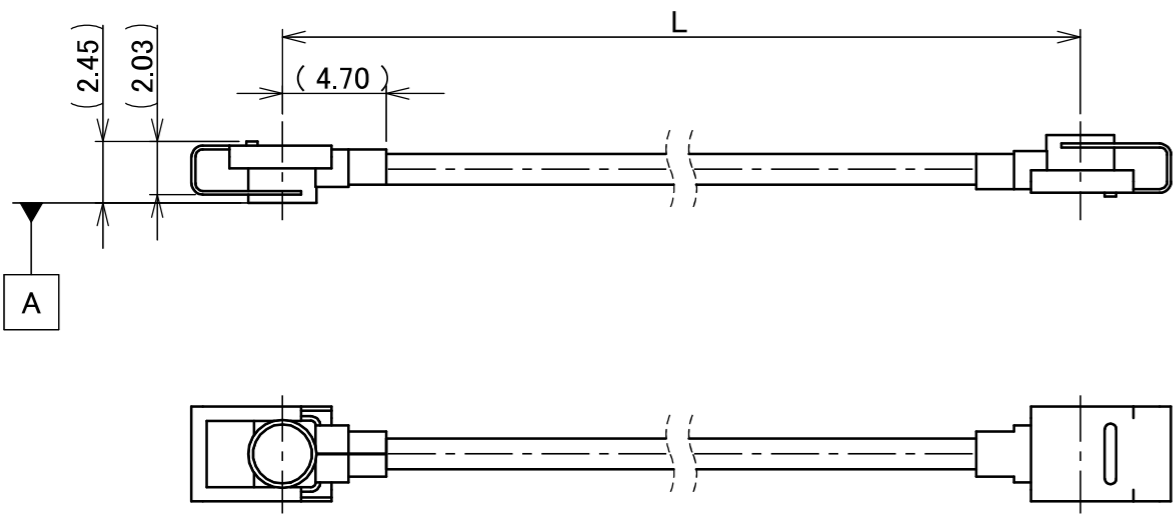
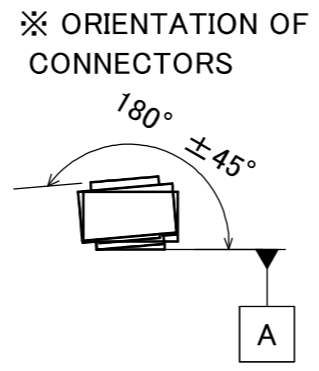
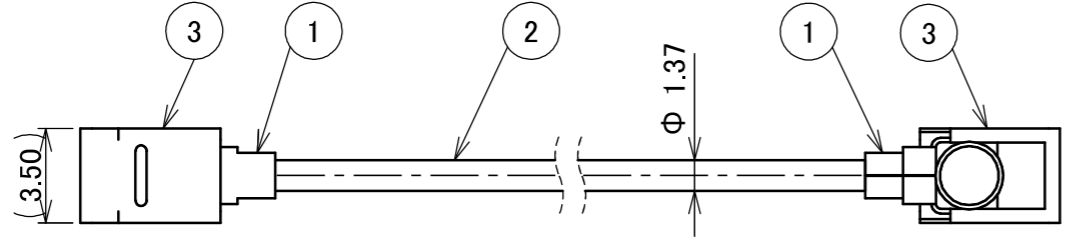
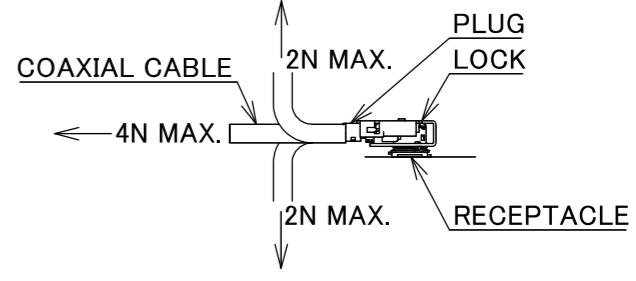


PART NO.	L
8-25-0903	300.00±3.0 mm

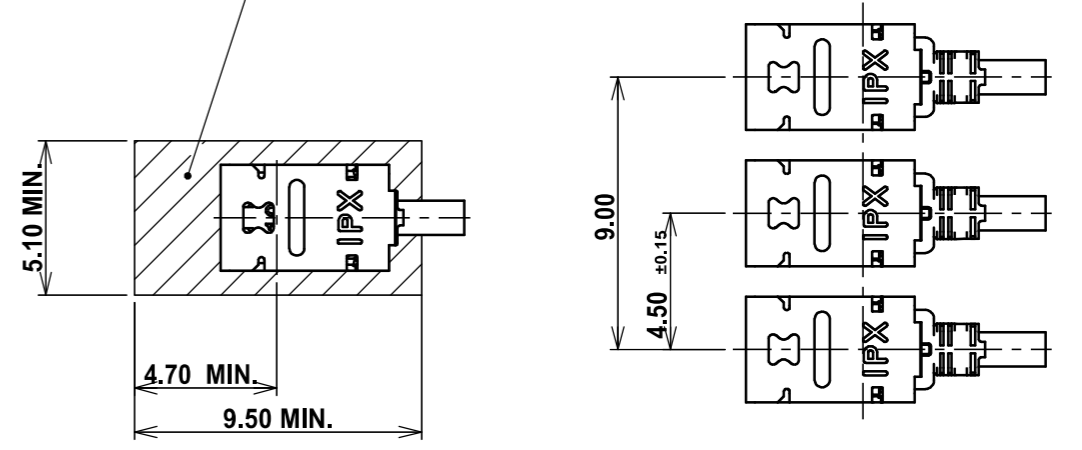
PLEASE CONTACT I-PEX FOR REQUESTS OTHER THAN THIS SPECIFICATIONS.
PLEASE NOTE IF SPECIFICATIONS CHANGE, PART NO. WILL ALSO CHANGE.

- NOTES
1. PACKING : PLASTIC BAG
 2. PERMISSIBLE LOAD ON THE CABLE AFTER MATING
 3. CABLE CRIMP STRENGTH : 15N MIN.
 4. TO OPERATE LOCK PART FOLLOW I-PEX INSTRUCTION MANUAL HIM-17020.
 5. DO NOT ROTATE THE PLUG IN THE MATING CONDITION.



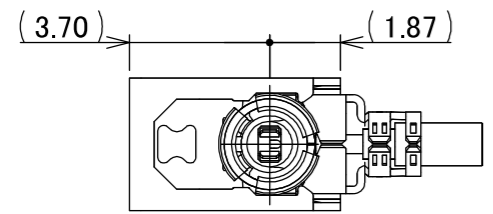
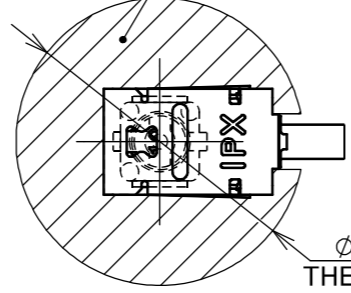
MULTIPLE CONNECTORS LAYOUT

COMPONENTS PLACEMENT PROHIBITED AREA
REQUIRED AREA FOR RECOMMENDED JIG TO OPERATE
MHF I LK HARNESS IN 4.50±0.15 mm PITCH (M.2 PITCH) SMOOTHLY.
JIG PART NUMBER: 91492-0001

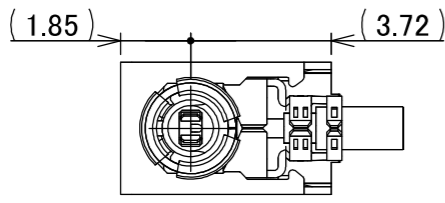


SINGLE CONNECTOR LAYOUT

COMPONENTS PLACEMENT PROHIBITED AREA
FOR PLUG 360° ROTATION AND UNMATING AND LOCK
JIG PART NUMBER: 91026-0001, 91492-0001



UNLOCKED CONDITION



LOCKED CONDITION

DO NOT MATE WITH RECEPTACLE UNDER THIS LOCKED CONDITION.

MATING AND LOCK CONDITION WITH MHF I LK HARNESS

MATING AND LOCK CONDITION WITH MHF I LK HARNESS NARROW PITCH

MHF I LK HARNESS UNLOCK CONDITION NARROW PITCH DIMENSIONS

3	LOCK PART	2	-
2	CABLE	1	AWG#30 Φ 1.37, BRAIDED SHIELD , BLACK
1	CONNECTOR-1, 2	2	MHF I Au
NO.	DESCRIPTION	QTY	REMARK

					ANGLE	±2°	6 OVER 30 MAX.	±0.3	PROJECTION ⊕	SERIES No. H-250068C	CUSTOMER COPY				
						6 MAX.	±0.2	30 OVER 120 MAX.				±0.5			
					GENERAL TOLERANCE.				TITLE MHF® I-I CABLE137-2 +LK	SCALE X:1	UNIT mm	I-PEX			
					DWG.	DATE							SIZE A3	SHEET 1/1	REV. 0
					Y.Nishimura	2026/02/02									
0	ZH00389	Y.Ni	2026/02/02	-	CHK.	T.Takuno			DWG. No.	8-25-0903					
REV.	ECN	BY	DATE	APP.	APP.	K.Yufu									
REVISION RECORD															



Confidential C

I-PEX Inc.

QKE-DFE06-02 REV.12