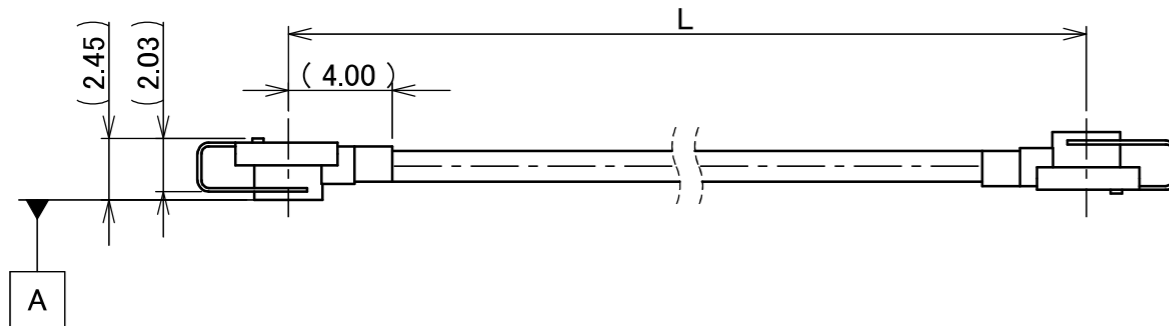
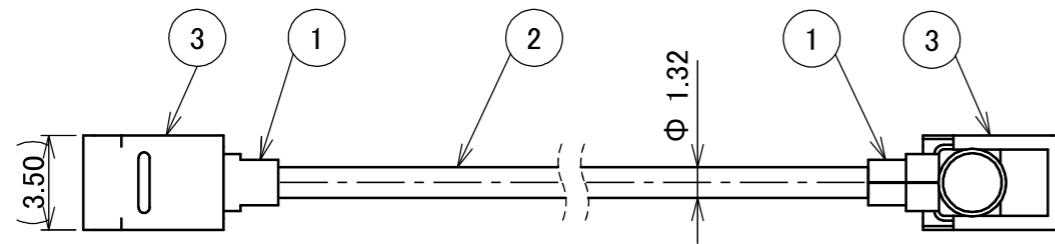
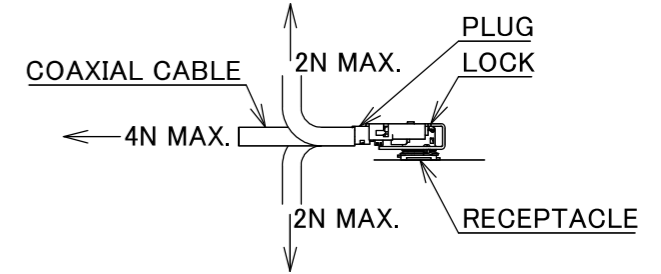


PART NO.	L
8-25-0894	400.00±3.0 mm

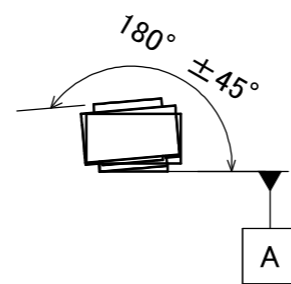
PLEASE CONTACT I-PEX FOR REQUESTS OTHER THAN THIS SPECIFICATIONS.  
PLEASE NOTE IF SPECIFICATIONS CHANGE, PART NO. WILL ALSO CHANGE.

NOTES

1. PACKING : PLASTIC BAG
2. PERMISSIBLE LOAD ON THE CABLE AFTER MATING
3. CABLE CRIMP STRENGTH : 10N MIN.
4. TO OPERATE LOCK PART FOLLOW I-PEX INSTRUCTION MANUAL HIM-17020.
5. DO NOT ROTATE THE PLUG IN THE MATING CONDITION.



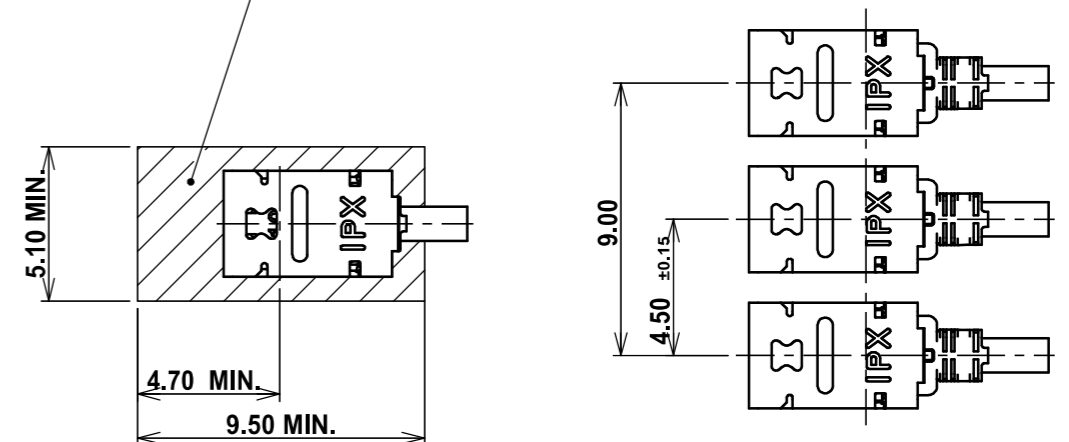
※ ORIENTATION OF CONNECTORS



MULTIPLE CONNECTORS LAYOUT

COMPONENTS PLACEMENT PROHIBITED AREA

REQUIRED AREA FOR RECOMMENDED JIG TO OPERATE MHF I LK HARNESS IN 4.50±0.15 mm PITCH (M.2 PITCH) SMOOTHLY. JIG PART NUMBER: 91492-0001

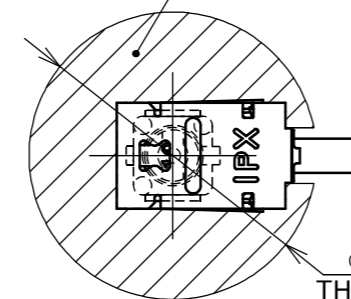


MATING AND LOCK CONDITION WITH MHF I LK HARNESS NARROW PITCH

MHF I LK HARNESS UNLOCK CONDITION NARROW PITCH DIMENSIONS

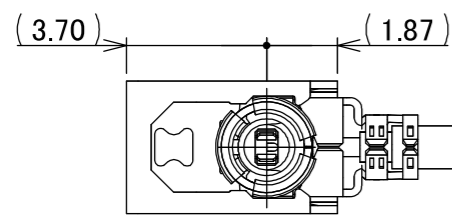
SINGLE CONNECTOR LAYOUT

COMPONENTS PLACEMENT PROHIBITED AREA FOR PLUG 360° ROTATION AND UNMATING AND LOCK JIG PART NUMBER: 91026-0001, 91492-0001

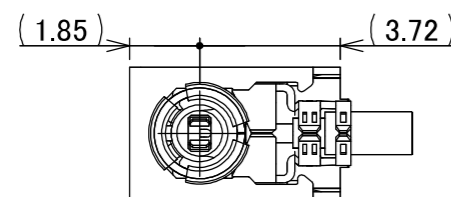


Φ 9.50 MIN.  
THE CENTER OF THE CIRCLE MATCHES THE CENTER OF RECEPTACLE.

MATING AND LOCK CONDITION WITH MHF I LK HARNESS



UNLOCKED CONDITION



LOCKED CONDITION

DO NOT MATE WITH RECEPTACLE UNDER THIS LOCKED CONDITION.

3	LOCK PART	2	-
2	CABLE	1	AWG#32 Φ 1.32, BRAIDED SHIELD , BLACK
1	CONNECTOR-1, 2	2	MHF I Au
NO.	DESCRIPTION	QTY	REMARK

					ANGLE	±2°	6 OVER 30 MAX.	±0.3	PROJECTION ⊕	SERIES No. H-250067D	CUSTOMER COPY				
						6 MAX.	±0.2	30 OVER 120 MAX.				±0.5			
					GENERAL TOLERANCE.				TITLE MHF® I-I CABLE132-2 +LK	SCALE X:1	UNIT mm	I-PEX			
					DWG.	DATE							SIZE A3	SHEET 1/1	REV. 0
					Y.Nishimura	2026/01/30									
0	ZH00386	Y.Ni	2026/01/30	-	CHK.	T.Takuno			DWG. No.	8-25-0894					
REV.	ECN	BY	DATE	APP.	APP.	K.Yufu									



Halogen Free



RoHS Compliant

Confidential C

I-PEX Inc.

QKE-DFE06-02 REV.12