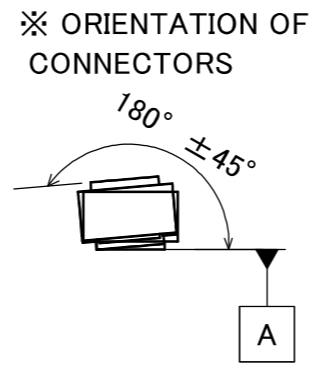
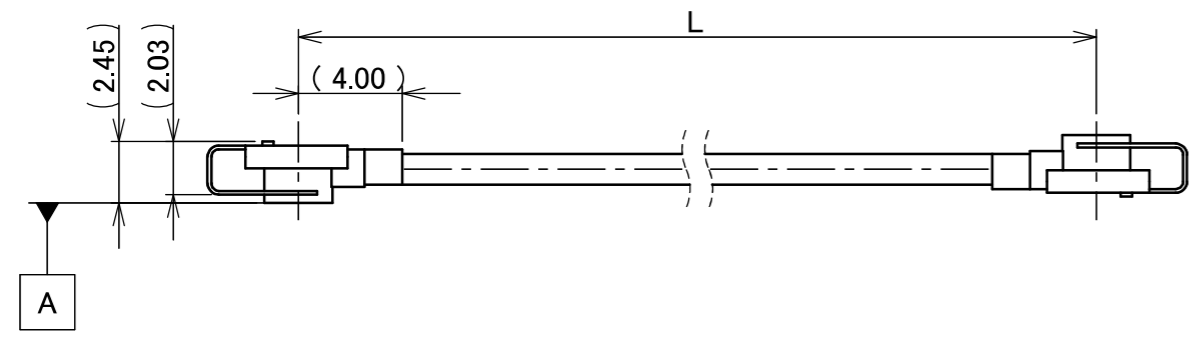
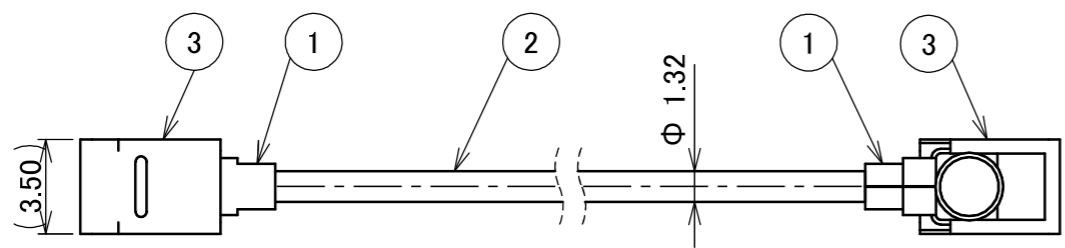
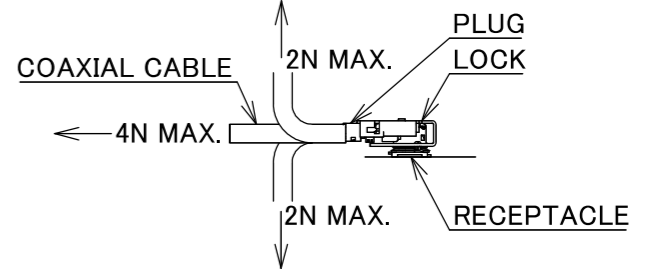


PART NO.	L
8-25-0893	300.00±3.0 mm

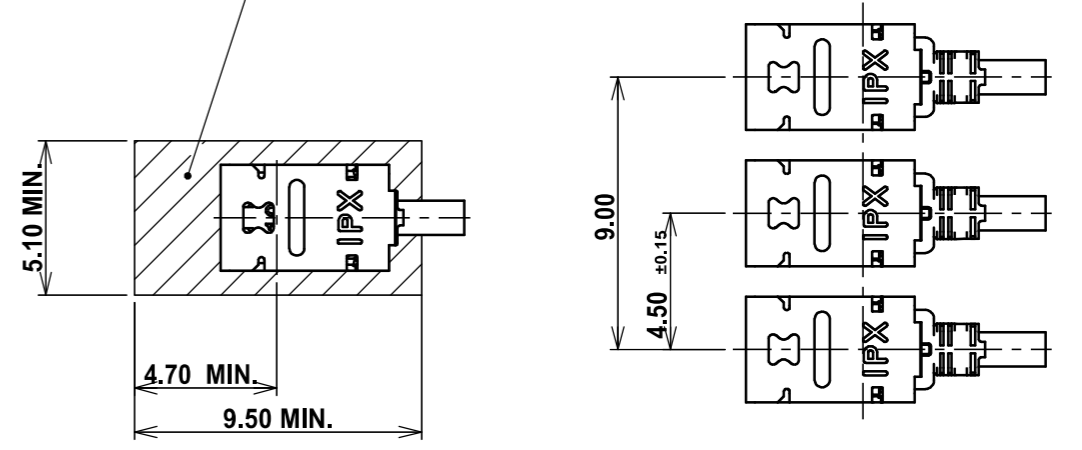
PLEASE CONTACT I-PEX FOR REQUESTS OTHER THAN THIS SPECIFICATIONS.  
PLEASE NOTE IF SPECIFICATIONS CHANGE, PART NO. WILL ALSO CHANGE.

- NOTES
1. PACKING : PLASTIC BAG
  2. PERMISSIBLE LOAD ON THE CABLE AFTER MATING
  3. CABLE CRIMP STRENGTH : 10N MIN.
  4. TO OPERATE LOCK PART FOLLOW I-PEX INSTRUCTION MANUAL HIM-17020.
  5. DO NOT ROTATE THE PLUG IN THE MATING CONDITION.



**MULTIPLE CONNECTORS LAYOUT**

**COMPONENTS PLACEMENT PROHIBITED AREA**  
REQUIRED AREA FOR RECOMMENDED JIG TO OPERATE  
MHF I LK HARNESS IN 4.50±0.15 mm PITCH (M.2 PITCH) SMOOTHLY.  
JIG PART NUMBER: 91492-0001

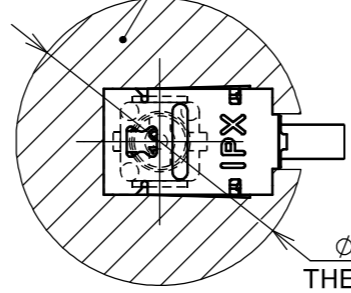


**MATING AND LOCK CONDITION WITH MHF I LK HARNESS NARROW PITCH**

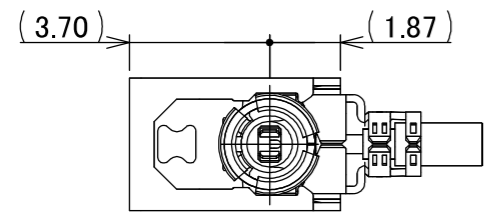
**MHF I LK HARNESS UNLOCK CONDITION NARROW PITCH DIMENSIONS**

**SINGLE CONNECTOR LAYOUT**

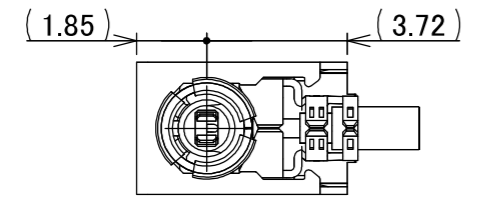
COMPONENTS PLACEMENT PROHIBITED AREA FOR PLUG 360° ROTATION AND UNMATING AND LOCK  
JIG PART NUMBER: 91026-0001, 91492-0001



THE CENTER OF THE CIRCLE MATCHES THE CENTER OF RECEPTACLE.



UNLOCKED CONDITION



LOCKED CONDITION

DO NOT MATE WITH RECEPTACLE UNDER THIS LOCKED CONDITION.

**MATING AND LOCK CONDITION WITH MHF I LK HARNESS**

3	LOCK PART	2	-
2	CABLE	1	AWG#32 Φ 1.32, BRAIDED SHIELD , BLACK
1	CONNECTOR-1, 2	2	MHF I Au
NO.	DESCRIPTION	QTY	REMARK

					ANGLE	±2°	6 OVER 30 MAX.	±0.3	PROJECTION ⊕	SERIES No. H-250067C	CUSTOMER COPY		
						6 MAX.	±0.2	30 OVER 120 MAX.				±0.5	
					GENERAL TOLERANCE.				TITLE MHF® I-I CABLE132-2 +LK	SCALE X:1	UNIT mm	SHEET 1/1	REV. 0
					DWG.	DATE							
					CHK.	T.Takuno							
0	ZH00386	Y.Ni	2026/01/30	-	APP.	K.Yufu			DWG. No.	8-25-0893	SIZE	A3	
REVISION RECORD													



Halogen Free



RoHS Compliant

Confidential C

I-PEX Inc.

QKE-DFE06-02 REV.12