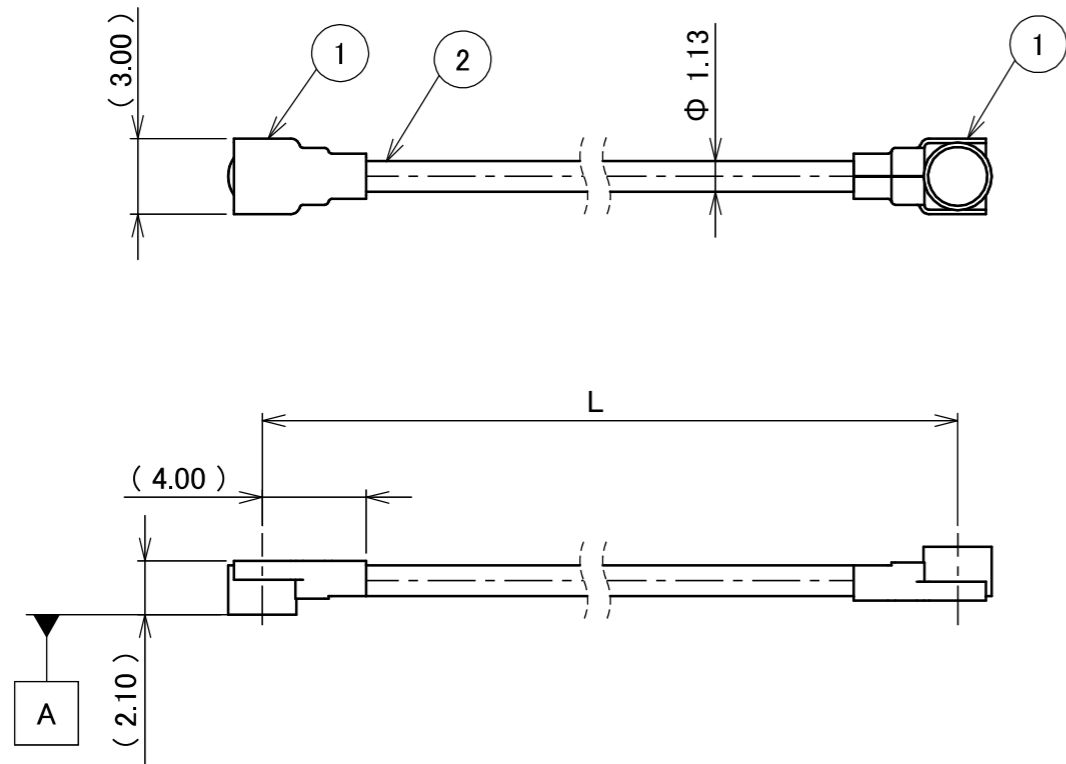
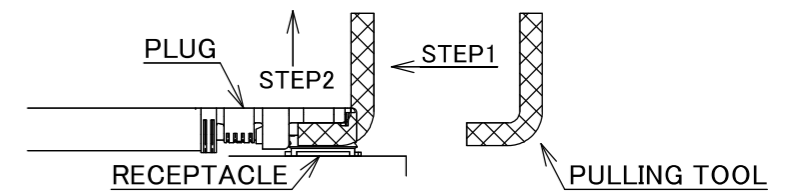


PART NO.	L
8-25-0829	300.00±3.0 mm

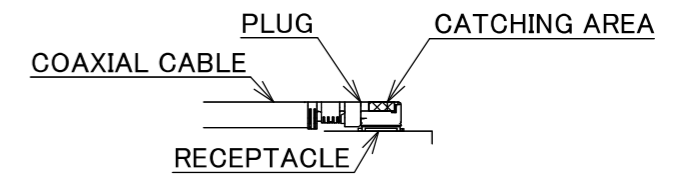
PLEASE CONTACT I-PEX FOR REQUESTS OTHER THAN THIS SPECIFICATIONS.
PLEASE NOTE IF SPECIFICATIONS CHANGE, PART NO. WILL ALSO CHANGE.



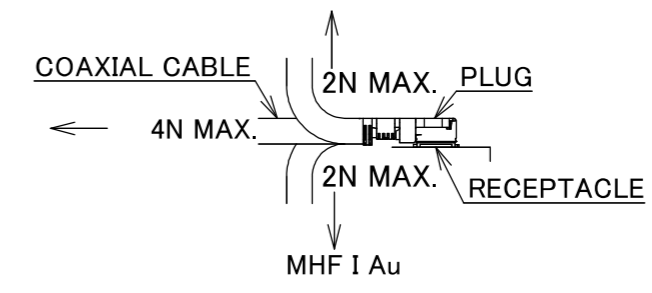
NOTES
1. SUGGESTIONS FOR MATING & UNMATING OPERATION.
1-1. MATING
MATE THE CONNECTOR VERTICALLY, ALIGNING THE MATING AXIS ON PLUG AND RECEPTACLE. DO NOT SLANT MATE.
1-2. UNMATING
1-2-1. UNMATING BY PULLING TOOL. [P/N 90192-001 (MHF I),] USE THE PULLING TOOL AS THE FOLLOWING, AND PULL PLUG TO VERTICAL DIRECTION AS DIRECTLY AS POSSIBLE.



1-2-2. UNMATING DIRECTLY BY HAND. HOLD THE CATCHING AREA ON PLUG AND PULL THE PLUG VERTICALLY.



- 2. PACKING : PLASTIC BAG
- 3. PERMISSIBLE LOAD ON THE CABLE AFTER MATING



4. CABLE CRIMP STRENGTH : 10N MIN.

2	CABLE	1	AWG#32 Φ 1.13, BRAIDED SHIELD , BLACK
1	CONNECTOR-1, 2	2	MHF I Au
NO.	DESCRIPTION	QTY	REMARK

					ANGLE	±2°	6 OVER 30 MAX.	±0.3	PROJECTION	SERIES No.	CUSTOMER COPY			
						6 MAX.	±0.2	30 OVER 120 MAX.	±0.5	H-250057D	I-PEX			
					GENERAL TOLERANCE.				TITLE	SCALE	I-PEX			
					DWG.	M.Toida	DATE	2026/01/26	MHF® I-I CABLE113-2		X:1	I-PEX		
					CHK.	T.Takuno					UNIT	I-PEX		
0	ZH00367	TOI	2026/01/26	-	APP.	K.Yufu			MHF I Au		mm	I-PEX		
REV.	ECN	BY	DATE	APP.	REVISION RECORD				DWG. No.	8-25-0829	SIZE	SHEET	REV.	
											A3	1/1	0	



Confidential C

I-PEX Inc.

QKE-DFE06-02 REV.12