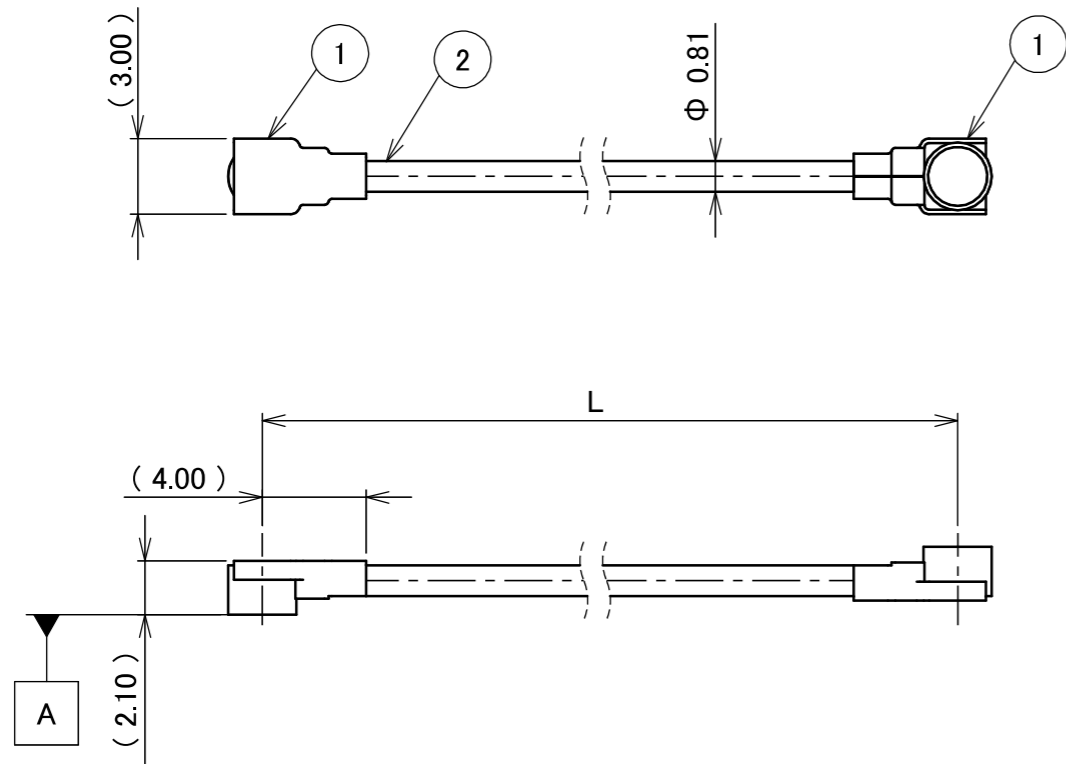
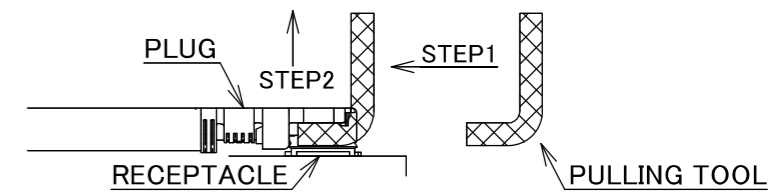


PART NO.	L
8-25-0834	300.00±3.0 mm

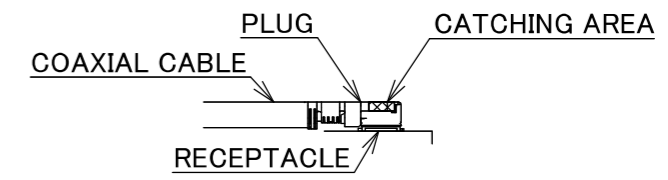
PLEASE CONTACT I-PEX FOR REQUESTS OTHER THAN THIS SPECIFICATIONS.  
PLEASE NOTE IF SPECIFICATIONS CHANGE, PART NO. WILL ALSO CHANGE.



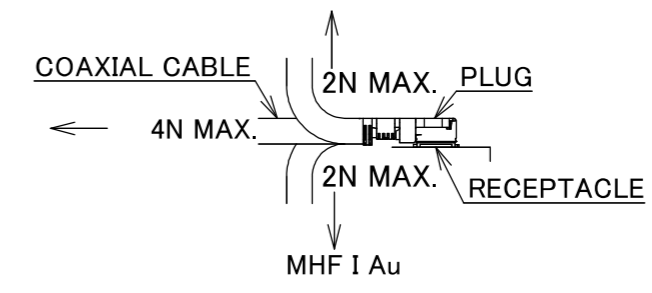
NOTES  
1. SUGGESTIONS FOR MATING & UNMATING OPERATION.  
1-1. MATING  
MATE THE CONNECTOR VERTICALLY, ALIGNING THE MATING AXIS ON PLUG AND RECEPTACLE. DO NOT SLANT MATE.  
1-2. UNMATING  
1-2-1.  
UNMATING BY PULLING TOOL.  
[P/N 90192-001 (MHF I), ]  
USE THE PULLING TOOL AS THE FOLLOWING, AND PULL PLUG TO VERTICAL DIRECTION AS DIRECTLY AS POSSIBLE.



1-2-2.  
UNMATING DIRECTLY BY HAND.  
HOLD THE CATCHING AREA ON PLUG AND PULL THE PLUG VERTICALLY.



- 2. PACKING : PLASTIC BAG
- 3. PERMISSIBLE LOAD ON THE CABLE AFTER MATING



4. CABLE CRIMP STRENGTH : 10N MIN.

2	CABLE	1	AWG#36 Φ 0.81, BRAIDED SHIELD , BLACK
1	CONNECTOR-1, 2	2	MHF I Au
NO.	DESCRIPTION	QTY	REMARK

					ANGLE	±2°	6 OVER 30 MAX.	±0.3	PROJECTION	SERIES No.	CUSTOMER COPY		
					6 MAX.	±0.2	30 OVER 120 MAX.	±0.5		H-250056C	<b>I-PEX</b>		
					GENERAL TOLERANCE.				TITLE	SCALE			
					DWG.		DATE		MHF®	X:1	<b>I-PEX</b>		
					M.Toida		2026/01/27		I-I CABLE081-2	UNIT			<b>I-PEX</b>
0	ZH00370	TOI	2026/01/27	-	CHK.					mm	<b>I-PEX</b>		
REV.	ECN	BY	DATE	APP.	T.Takuno				DWG. No.	SIZE			SHEET
REVISION RECORD					K.Yufu				8-25-0834	A3	1/1	0	



Confidential C

I-PEX Inc.

QKE-DFE06-02 REV.12