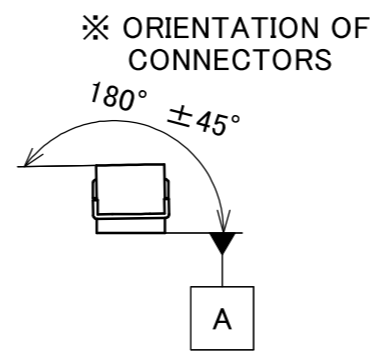
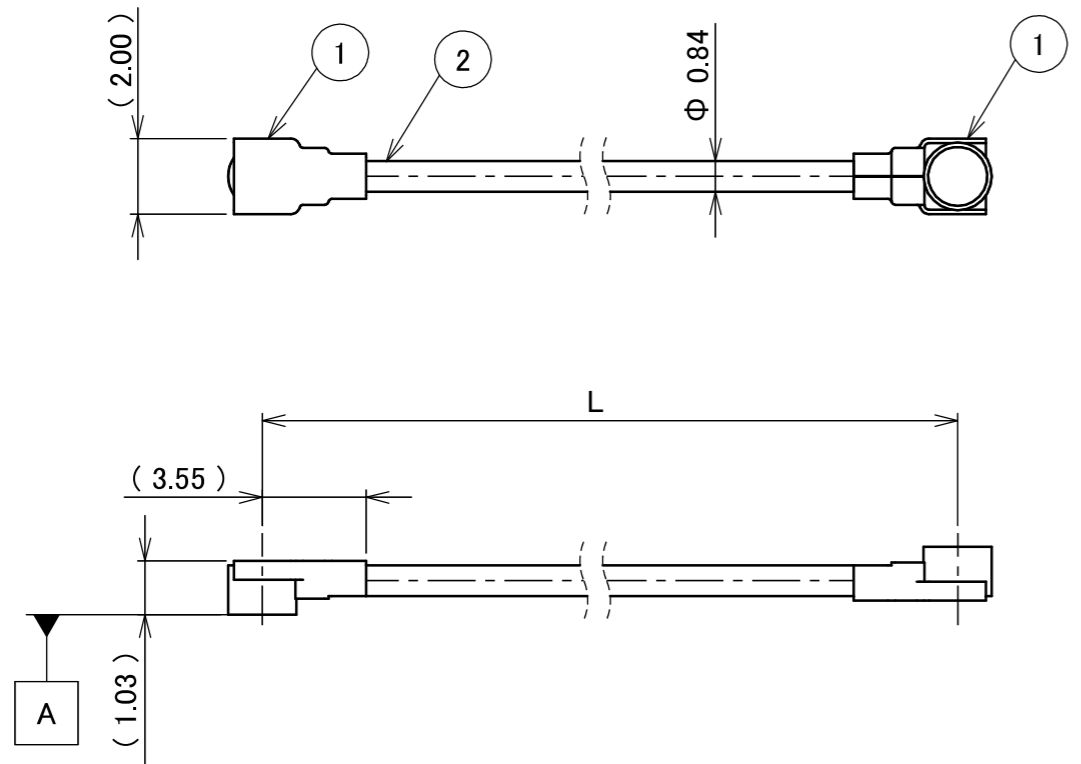
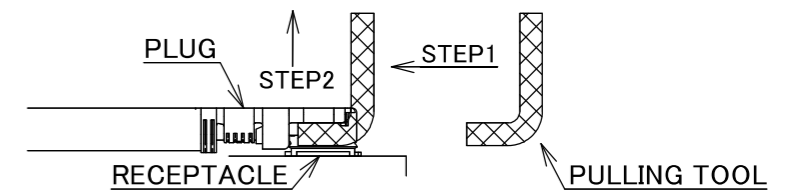


PART NO.	L
8-25-0968	200.00±1.0 mm

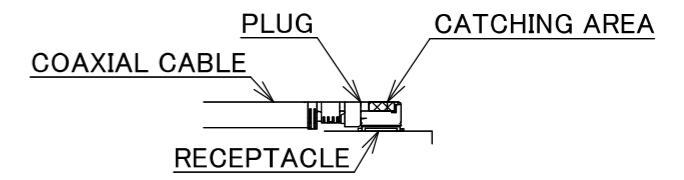
PLEASE CONTACT I-PEX FOR REQUESTS OTHER THAN THIS SPECIFICATIONS.  
PLEASE NOTE IF SPECIFICATIONS CHANGE, PART NO. WILL ALSO CHANGE.



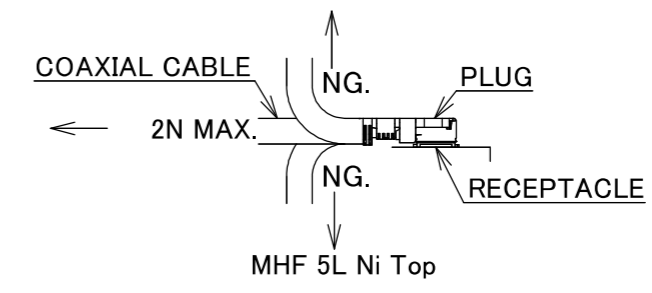
NOTES  
1. SUGGESTIONS FOR MATING & UNMATING OPERATION.  
1-1. MATING  
MATE THE CONNECTOR VERTICALLY,  
ALIGNING THE MATING AXIS ON PLUG AND RECEPTACLE.  
DO NOT SLANT MATE.  
1-2. UNMATING  
1-2-1.  
UNMATING BY PULLING TOOL.  
[P/N 90612-0001 (MHF 5L), ]  
USE THE PULLING TOOL AS THE FOLLOWING, AND  
PULL PLUG TO VERTICAL DIRECTION AS DIRECTLY AS POSSIBLE.



1-2-2.  
UNMATING DIRECTLY BY HAND.  
HOLD THE CATCHING AREA ON PLUG AND PULL THE PLUG  
VERTICALLY.



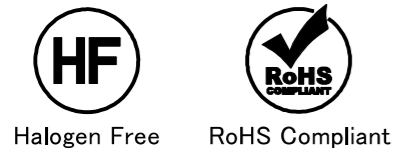
2. PACKING : PLASTIC BAG  
3. PERMISSIBLE LOAD ON THE CABLE AFTER MATING



4. CABLE CRIMP STRENGTH : 10N MIN.

2	CABLE	1	AWG#33 Φ 0.84, SPIRAL SHIELD , BLACK
1	CONNECTOR-1, 2	2	MHF 5L Ni Top
NO.	DESCRIPTION	QTY	REMARK

					ANGLE	±2°	6 OVER 30 MAX.	±0.3	PROJECTION ⊕	SERIES No. H-250086B	CUSTOMER COPY		
						6 MAX.	±0.2	30 OVER 120 MAX.					±0.5
					GENERAL TOLERANCE.				TITLE MHF® 5L-5L CABLE084-2	SCALE X:1	I-PEX		
1	ZH00621	TOI	2026/07/06	Yufu	DWG.	DATE		2025/12/15					UNIT mm
0	ZH00243	Y.Ni	2025/12/15	-	CHK.	T.Takuno		SIZE A3					
REV.	ECN	BY	DATE	APP.	APP.	DWG. No.			8-25-0968	SHEET	1/1	REV.	1
REVISION RECORD					K.Yufu								



Confidential C

I-PEX Inc.

QKE-DFE06-02 REV.12