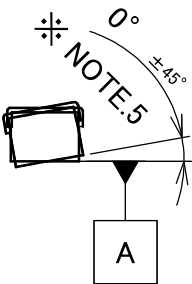
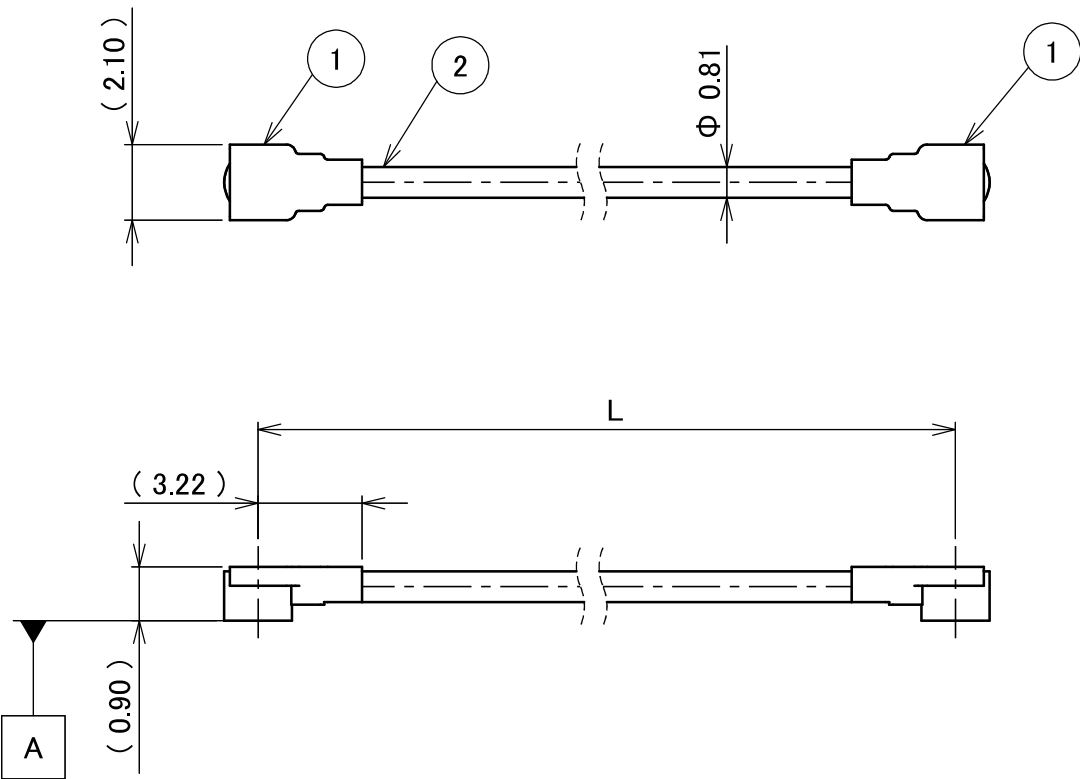
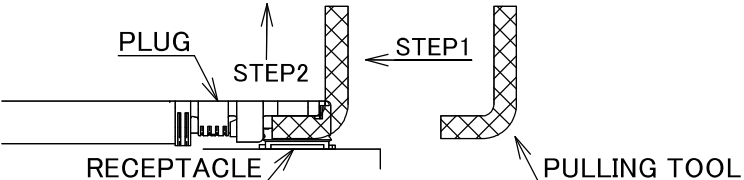


PART NO.	L
8-25-0467	100.00±1.0 mm

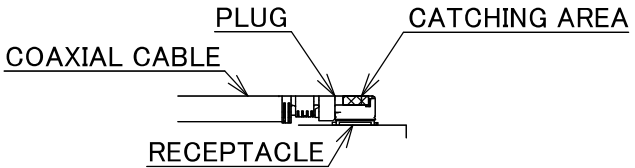
PLEASE CONTACT I-PEX FOR REQUESTS OTHER THAN THIS SPECIFICATIONS.
PLEASE NOTE IF SPECIFICATIONS CHANGE, PART NO. WILL ALSO CHANGE.



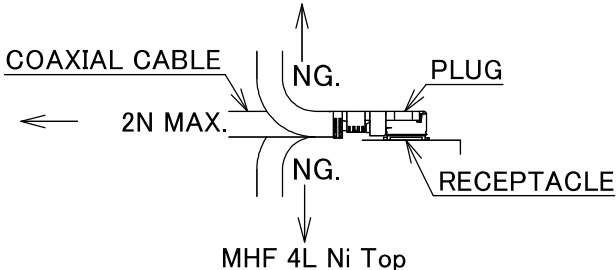
NOTES
1. SUGGESTIONS FOR MATING & UNMATING OPERATION.
1-1. MATING
MATE THE CONNECTOR VERTICALLY,
ALIGNING THE MATING AXIS ON PLUG AND RECEPTACLE.
DO NOT SLANT MATE.
1-2. UNMATING
1-2-1.
UNMATING BY PULLING TOOL.
[P/N 90609-0001 (MHF 4L),]
USE THE PULLING TOOL AS THE FOLLOWING, AND
PULL PLUG TO VERTICAL DIRECTION AS DIRECTLY AS POSSIBLE.



1-2-2.
UNMATING DIRECTLY BY HAND.
HOLD THE CATCHING AREA ON PLUG AND PULL THE PLUG
VERTICALLY.



- 2. PACKING : PLASTIC BAG
- 3. PERMISSIBLE LOAD ON THE CABLE AFTER MATING



- 4. CABLE CRIMP STRENGTH : 10N MIN.
- 5. ORIENTATION OF CONNECTORS

2	CABLE	1	AWG#36 Φ 0.81, BRAIDED SHIELD , BLACK
1	CONNECTOR-1, 2	2	MHF 4L Ni Top
NO.	DESCRIPTION	QTY	REMARK

					ANGLE	±2°	6 OVER 30 MAX.	±0.3	PROJECTION	SERIES No.	CUSTOMER COPY
					6 MAX.	±0.2	30 OVER 120 MAX.	±0.5	⊕	H-250029B	
					GENERAL TOLERANCE.				TITLE		SCALE
					DWG.		DATE		MHF®		X:1
					CHK.				4L-4L CABLE081-1		UNIT
0	Z250893	TOI	2025/06/03	-	T.Takuno						mm
REV.	ECN	BY	DATE	APP.	APP.				DWG. No.		SIZE
REVISION RECORD					K.Yufu				8-25-0467		A3
											SHEET
											1/1
											REV.
											0



Halogen Free



RoHS Compliant

Confidential C

I-PEX Inc.

QKE-DFFDE06-02 REV.12