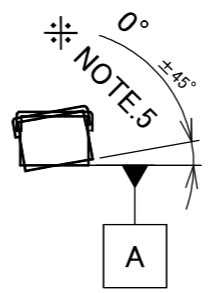
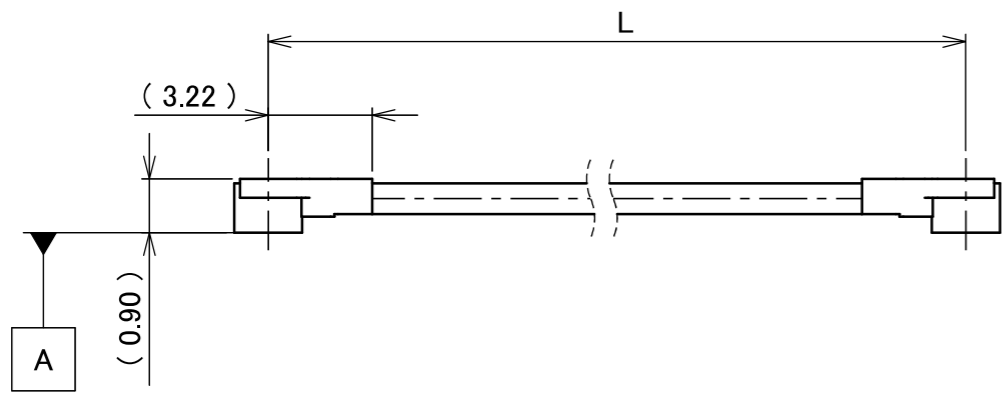
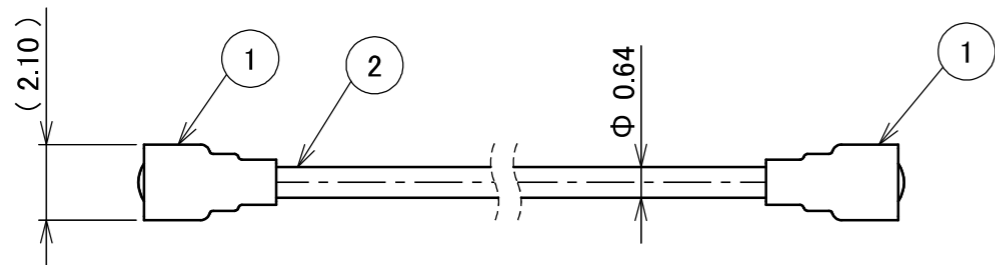


PART NO.	L
8-25-0437	50.00±1.0 mm

PLEASE CONTACT I-PEX FOR REQUESTS OTHER THAN THIS SPECIFICATIONS.
PLEASE NOTE IF SPECIFICATIONS CHANGE, PART NO. WILL ALSO CHANGE.



NOTES

1. SUGGESTIONS FOR MATING & UNMATING OPERATION.

1-1. MATING

MATE THE CONNECTOR VERTICALLY,
ALIGNING THE MATING AXIS ON PLUG AND RECEPTACLE.
DO NOT SLANT MATE.

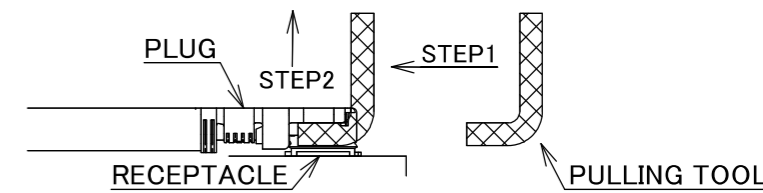
1-2. UNMATING

1-2-1.

UNMATING BY PULLING TOOL.

[P/N 90609-0001 (MHF 4L),]

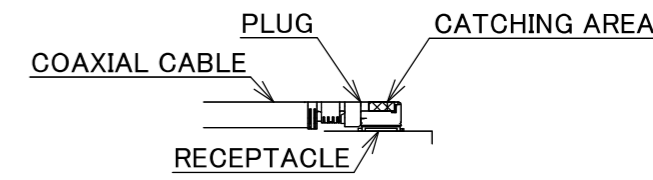
USE THE PULLING TOOL AS THE FOLLOWING, AND
PULL PLUG TO VERTICAL DIRECTION AS DIRECTLY AS POSSIBLE.



1-2-2.

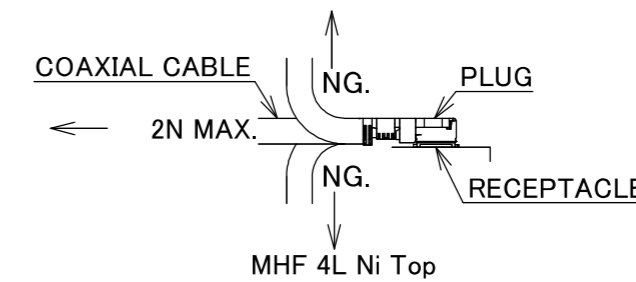
UNMATING DIRECTLY BY HAND.

HOLD THE CATCHING AREA ON PLUG AND PULL THE PLUG
VERTICALLY.



2. PACKING : PLASTIC BAG

3. PERMISSIBLE LOAD ON THE CABLE AFTER MATING



4. CABLE CRIMP STRENGTH : 8N MIN.

5. ORIENTATION OF CONNECTORS

2	CABLE	1	AWG#36 Φ 0.64, SPIRAL SHIELD , BLACK
1	CONNECTOR-1, 2	2	MHF 4L Ni Top
NO.	DESCRIPTION	QTY	REMARK

					ANGLE	±2°	6 OVER 30 MAX.	±0.3	PROJECTION	SERIES No.	CUSTOMER COPY				
						6 MAX.	±0.2	30 OVER 120 MAX.	±0.5	H-250025A	I-PEX				
					GENERAL TOLERANCE.				TITLE	SCALE	I-PEX				
					DWG.	K.Watanabe		DATE	2025/05/28	MHF®				X:1	
					CHK.	T.Takuno				4L-4L CABLE064-1	UNIT	I-PEX			
0	Z250849	K.W	2025/05/28	-	APP.	K.Yufu				mm	SIZE				I-PEX
REV.	ECN	BY	DATE	APP.	REVISION RECORD				DWG. No.	8-25-0437	A3	SHEET	1/1	REV.	



Halogen Free



RoHS Compliant