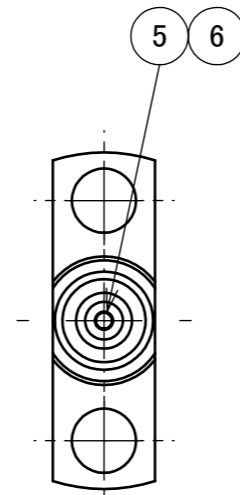
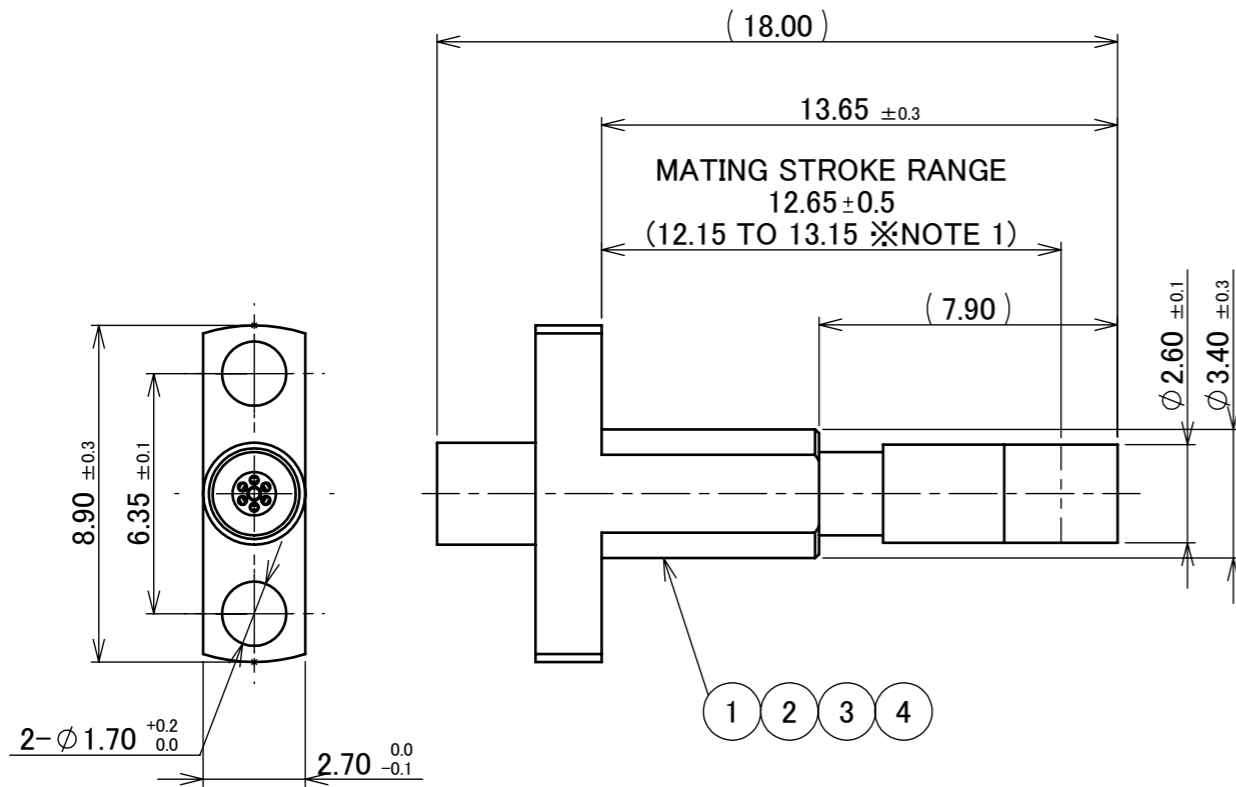




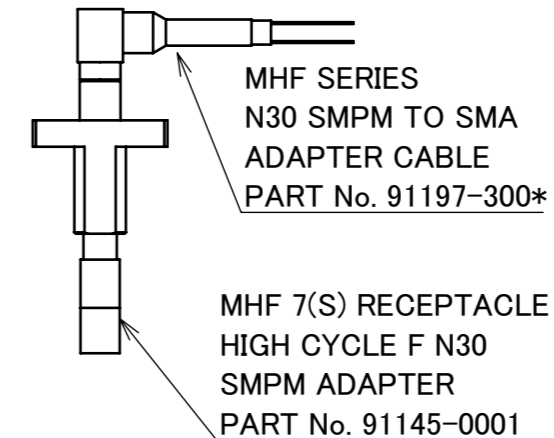
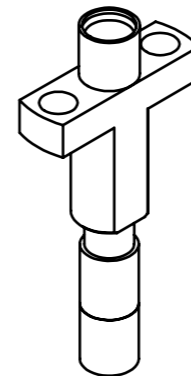
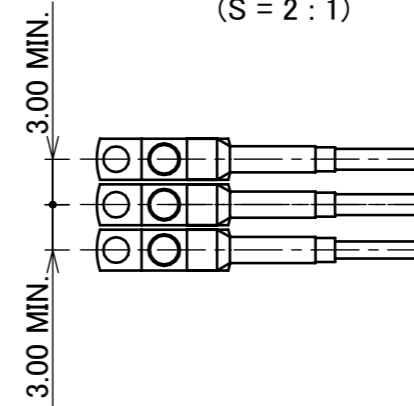
Halogen Free



RoHS Compliant

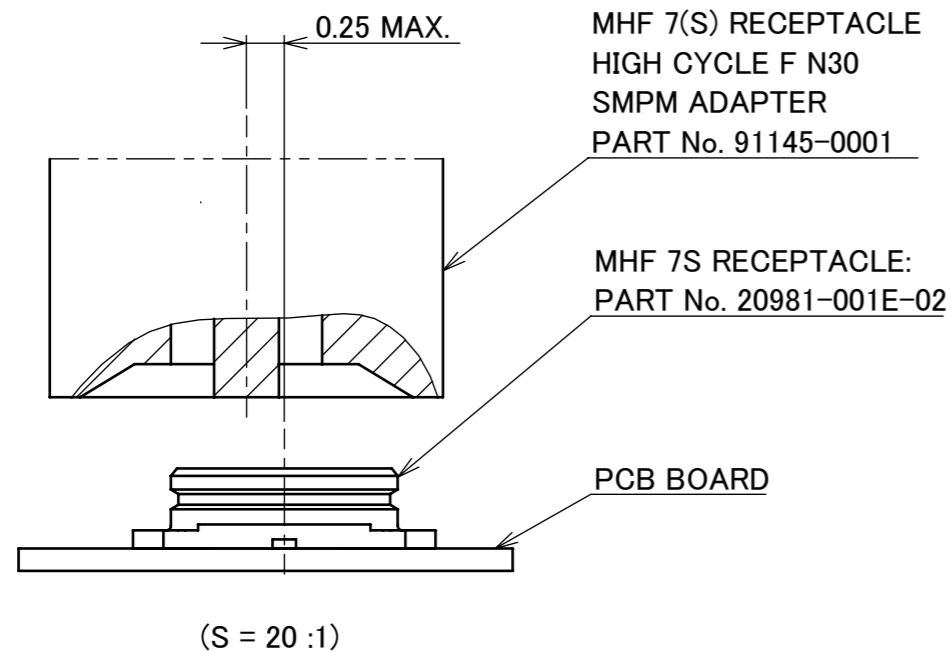


【USE IMAGE WITH 91197-300*】
(S = 2 : 1)



NOTES

1. WHEN MATING ADAPTER TO CONNECTOR, MATING STROKE LENGTH NEEDS TO BE IN RANGE OF 12.15mm TO 13.15mm FROM EDGE OF FLANGE (EDGE CLOSER TO TIP OF PROBE) TO TIP OF PROBE.
2. AXIAL MISALIGNMENT DISTANCE: 0.25mm MAX.



6	PIN	BERYLLIUM COPPER	Au PLATING
5	INSULATOR	PTFE	-
4	BODY 4	-	-
3	BODY 3	-	-
2	BODY 2	-	-
1	BODY 1	-	-
NO.	DESCRIPTION	MATERIAL	FINISH , REMARKS
		ANGLE $\pm 2^\circ$ 6 OVER 30 MAX. ± 0.3	PROJECTION $\oplus \triangleleft$ SERIES No. R0 CUSTOMER COPY
		6 MAX. ± 0.2 30 OVER 120 MAX. ± 0.5	
		GENERAL TOLERANCE.	TITLE MHF [®] 7 RECEPTACLE HIGH CYCLE F N30 SMPM ADAPTER
1	Z221243 K.M 2022/11/08 Y.H	DWG. K.Watanabe DATE 2022/10/05	SCALE 5:1 UNIT I-PEX
0	Z221110 K.W 2022/10/05	CHK. K.Yufu	mm
REV.	ECN BY DATE APP.	APP. Y.Hashimoto	SIZE SHEET REV. A3 1/2 1

ITEMS	SPECIFICATION
RECOMMENDED APPLICABLE CONNECTOR PART No.	MHF 7S RECEPTACLE P/N: 20981-001E-02 MHF SERIES N30 SMPM TO SMA ADAPTER CABLE P/N: 91197-300*
RATING FREQUENCY	300kHz~15.0GHz
OPERATING TEMPERATURE	243~343 K (-30°C~+70°C)
VSWR (MATED WITH 20981-001E-02)	1.40 MAX. AT 300kHz~3.0GHz, 1.50 MAX. AT 3.0GHz~6.0GHz, 1.60MAX. AT 6.0GHz~9.0GHz,2.00MAX. AT 9.0GHz~15.0GHz
INSULATION RESISTANCE	500 Mohm MIN. AT DC 100V
DIELECTRIC WITHSTANDING VOLTAGE	AC 100V 1min
DURABILITY	10,000 CYCLES
PRODUCT SPECIFICATION	PRS-2802
TEST REPORT	TR-22026
INSTRUCTION MANUAL	HIM-22015
APPEARANCE CRITERIA No.	QLS-A***

ANGLE	±2°	6 OVER 30 MAX.	±0.3	PROJECTION 	SERIES No. R0	CUSTOMER COPY		
6 MAX.	±0.2	30 OVER 120 MAX.	±0.5					
GENERAL TOLERANCE.				TITLE MHF® 7 RECEPTACLE HIGH CYCLE F N30 SMPM ADAPTER	SCALE	I-PEX		
DWG.	DATE				-			
CHK.					UNIT			
APP.					mm			
				DWG. No.	91145	SIZE	SHEET	REV.
						A3	2/2	1