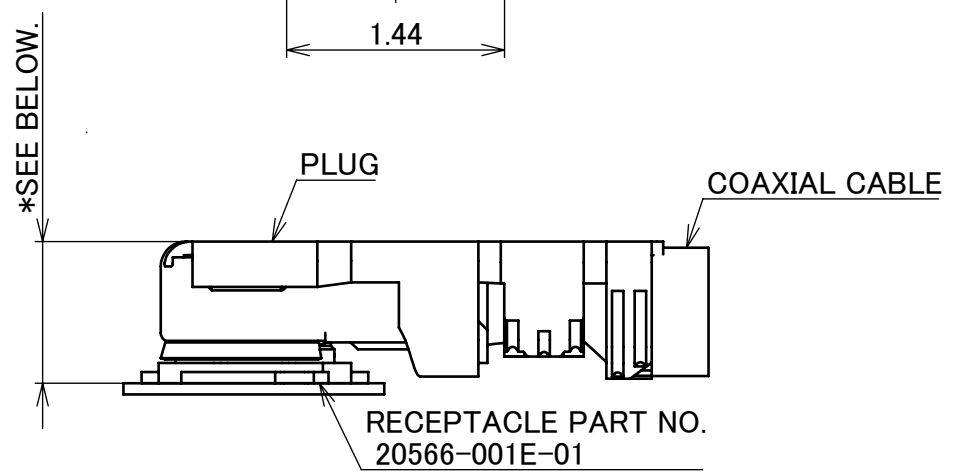
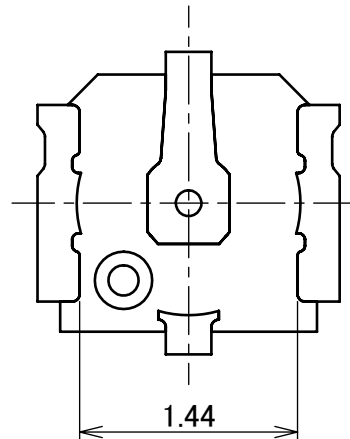
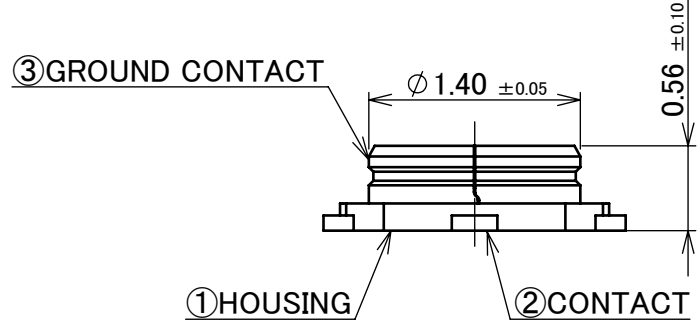
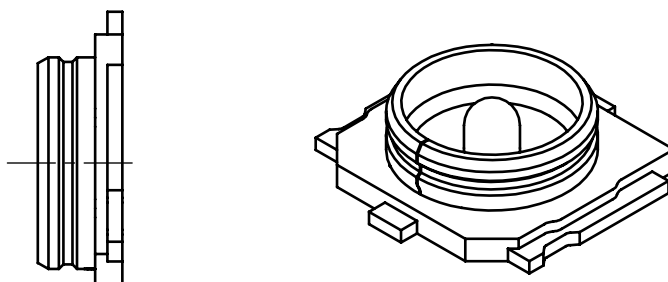
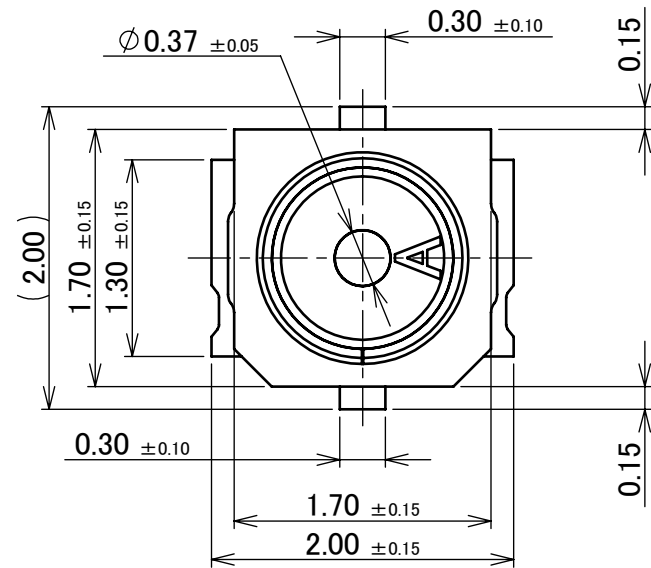


PART NO.
20566-001E-01

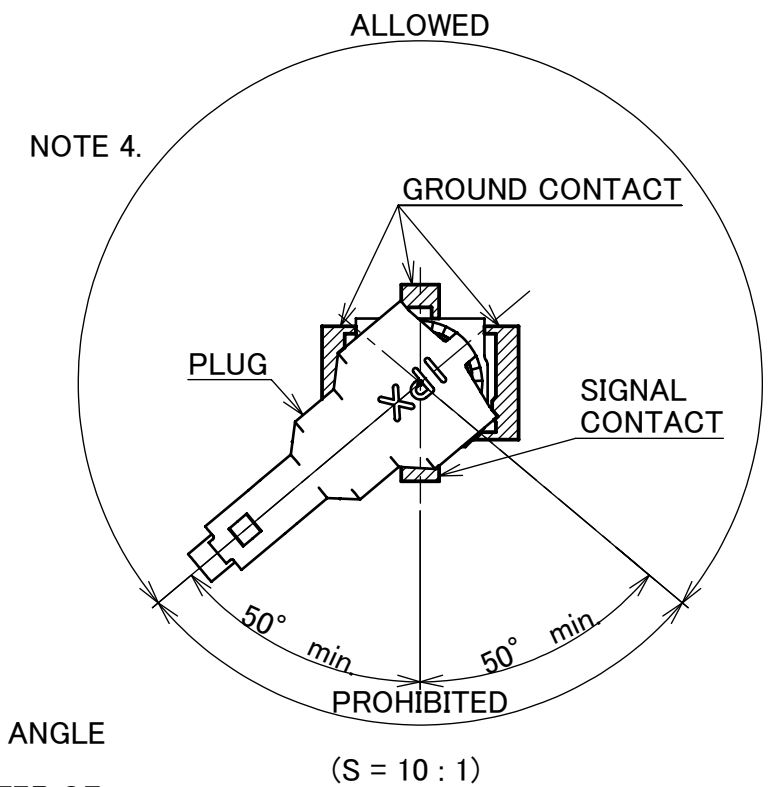


* 1.3 MAX. AT 20668-001R-13, 20714-001R-81
 * 1.0 MAX. AT 20711-001R-81

MATING CONDITION (S = 15 : 1)

NOTES

1. APPLICABLE CONNECTOR
 20567-001R-81
 20615-00*R-48
 20668-001R-13
 20669-001R-81
 20711-001R-81
 20714-001R-81
2. COPLANARITY: 0.1mm MAX.
3. THIS IS "Pb-FREE" CONNECTOR.
4. PRECAUTIONS FOR CABLE POSITION
 [PART NO. 20567-001R-81, 20615-00*R-48]
 THE PLUG SHALL NOT BE PLACED WITHIN 50 DEGREES ANGLE FROM CENTER OF THE SIGNAL CONTACT.
 TILT THE PLUG AT LEAST 50 DEGREES FROM THE CENTER OF A SIGNAL CONTACT.

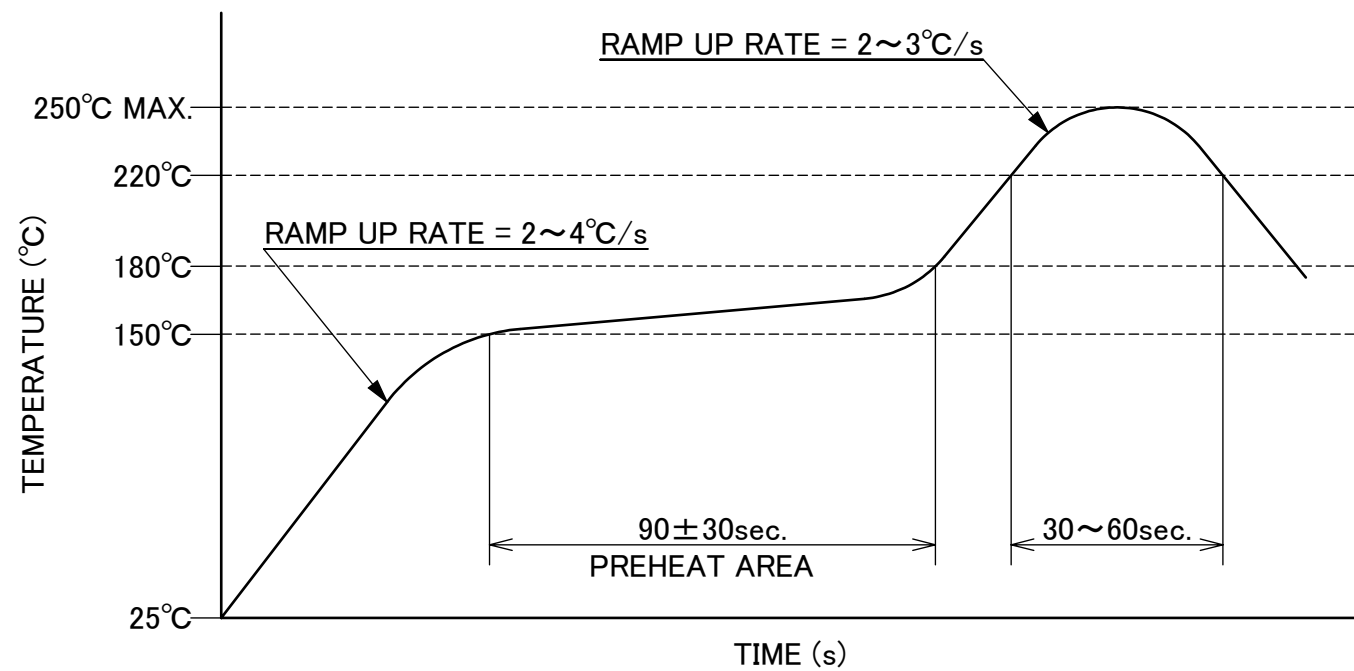
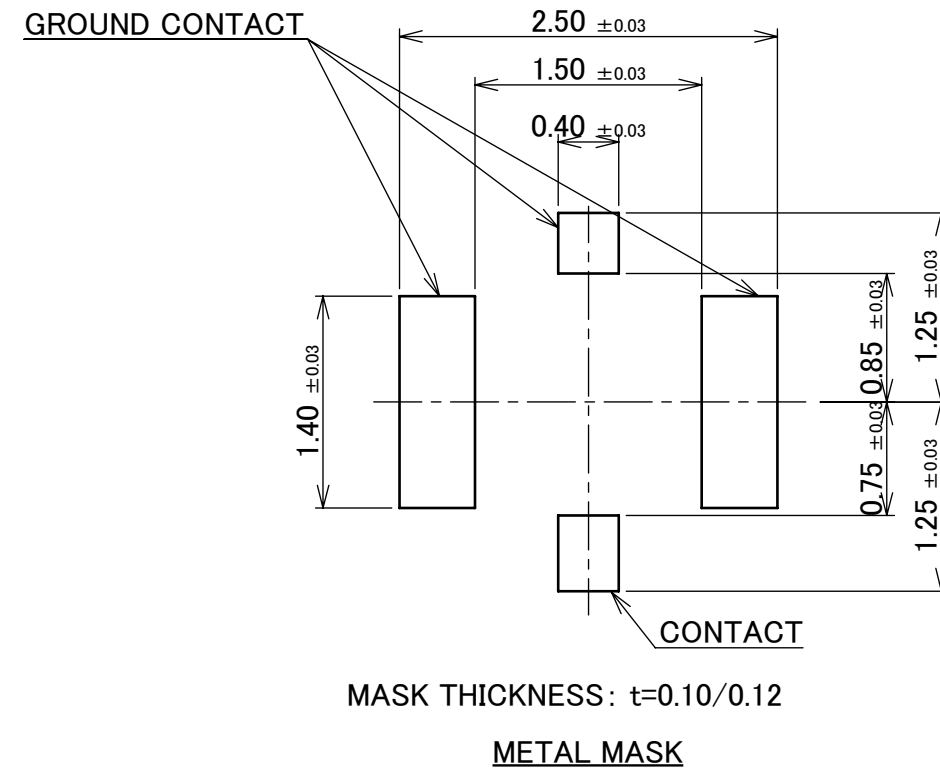
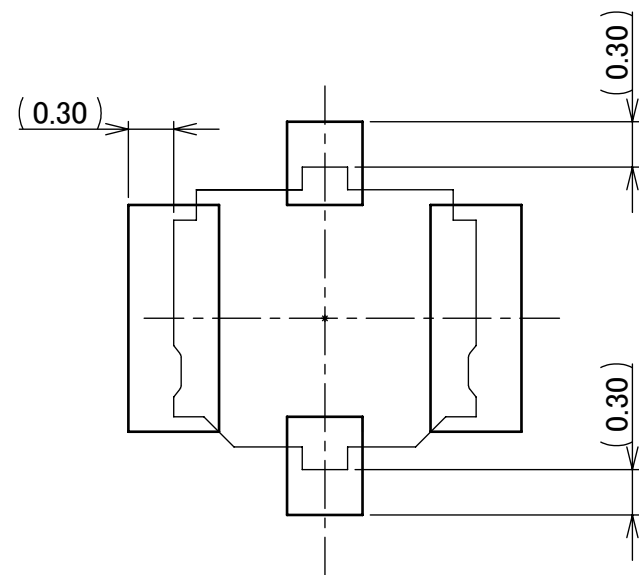
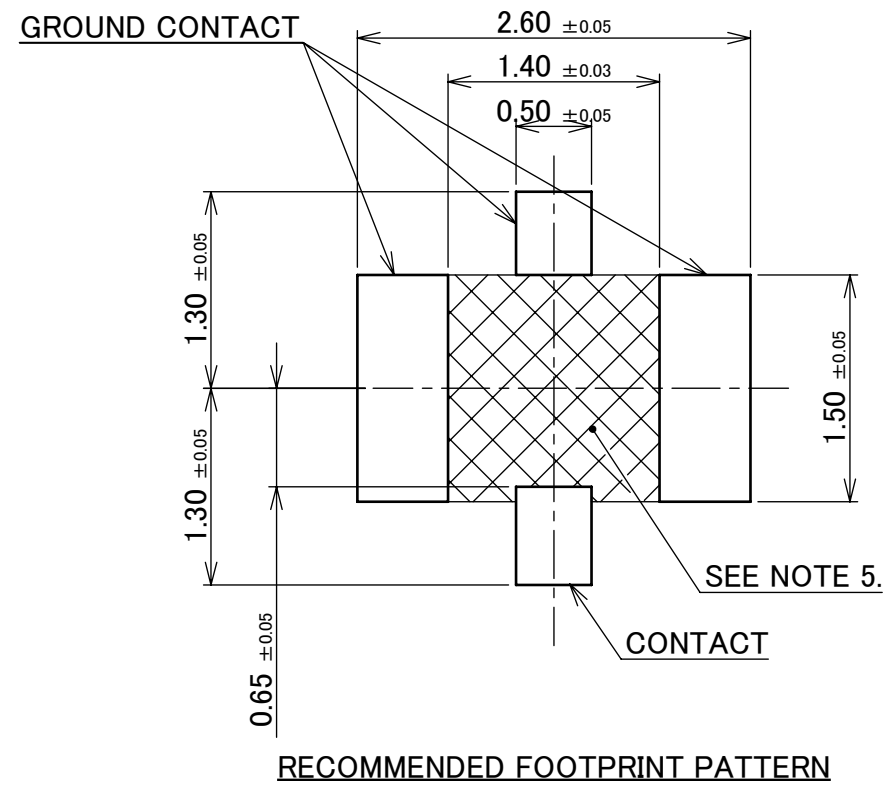


3	GROUND CONTACT	PHOSPHOR BRONZE	ALL OVER Ni 1.00 μm MIN. CONTACT PART Au 0.01 μm MIN. UNDER PLATE Pd-Ni 0.02 μm MIN. SOLDERING PART Au 0.01 μm MIN. UNDER PLATE Pd-Ni 0.02 μm MIN.
2	CONTACT	BRASS	ALL OVER Ni 1.00 μm MIN. CONTACT PART Au 0.1 μm MIN. SOLDERING PART Au 0.03 μm MIN.
1	HOUSING	LCP	UL94V-0, BLACK
NO.	DESCRIPTION	MATERIAL	FINISH, REMARKS

9	Z230823	Y.I	2023/07/18	M.T	ANGLE	±2°	6 OVER 30 MAX.	±0.3	PROJECTION ⊕	SERIES No. R6	CUSTOMER COPY		
8	Z220655	K.W	2022/06/13	Y.H	6 MAX.	±0.2	30 OVER 120 MAX.	±0.5					
7	Z210267	TOI	2021/03/16	M.T	GENERAL TOLERANCE.				TITLE MHF® 5 RECEPTACLE	SCALE 20:1	UNIT mm	I-PEX	
6	Z180766	M.N	2018/09/14	Ken	DWG.	H.Kon		DATE					2012/12/07
5	Z180428	M.N	2018/03/30	Ken	CHK.	K.Yotsutani		DATE					2012/12/07
4	Z150479	H.T	2015/05/25	Tom	APP.	T.Takano		DATE					2012/12/07
REV.	ECN	BY	DATE	APP.	APP.	DATE	DWG. No.	20566	SIZE	SHEET	REV.		
REVISION RECORD					T.Takano	2012/12/07	20566	A3	1/5	9			

ITEMS	SPECIFICATION				
RECOMMENDED APPLICABLE CONNECTOR PART No.	20668-001R-13	20711-001R-81 (CABLE AWG#36 ϕ 0.81)	20714-001R-81	20711-001R-81 (CABLE AWG#36 ϕ 0.64)	20615-001R-48 (ALL Au PLATING TYPE)
RATING VOLTAGE	60 V AC (R.M.S)				
RATING FREQUENCY	DC~15 GHz				
OPERATING TEMPERATURE	233~363 K (-40°C~+90°C)				
VSWR (MATED WITH SMA ADAPTER PART No. 90543-0001)	1.30 MAX. AT 0.1~3 GHz, 1.40 MAX. AT 3~6 GHz, 1.50 MAX. AT 6~12 GHz, 1.65 MAX. AT 12~15 GHz				
MAIN CONTACT RESISTANCE	INITIAL: 20 mohm MAX. / AFTER TEST: Δ R 20 mohm MAX.				
GROUND CONTACT RESISTANCE	INITIAL: 20 mohm MAX. / AFTER TEST: Δ R 100 mohm MAX.				INITIAL: 20 mohm MAX. / AFTER TEST: Δ R 20 mohm MAX.
INSULATION RESISTANCE	INITIAL: 500 Mohm MIN. / AFTER TEST: 100 Mohm MIN.				
DIELECTRIC WITHSTANDING VOLTAGE	200 V AC, 1 MINUTE				
DURABILITY	30 CYCLES				
UNMATING FORCE (INITIAL / AFTER TEST)	INITIAL: 5 N MIN. AFTER TEST: 3 N MIN.	INITIAL: 4 N MIN. AFTER TEST: 2 N MIN.	INITIAL: 5 N MIN. AFTER TEST: 3 N MIN.	INITIAL: 4 N MIN. AFTER TEST: 2 N MIN.	INITIAL: 4 N MIN. AFTER TEST: 2 N MIN.
PRODUCT SPECIFICATION	PRS-2192	PRS-2108	PRS-2236	PRS-2109	PRS-1939
TEST REPORT	TR-16003	TR-15062	TR-16049	TR-15063	TR-14026
PACKING STANDARD	PST-12036				
INSTRUCTION MANUAL	HIM-16014	HIM-16013	HIM-16014	HIM-16013	HIM-13003
APPEARANCE CRITERIA No.	QLS-A***				

ANGLE	$\pm 2^\circ$	6 OVER 30 MAX.	± 0.3	PROJECTION 	SERIES No. R6	CUSTOMER COPY		
6 MAX.	± 0.2	30 OVER 120 MAX.	± 0.5			SCALE -	I-PEX	
GENERAL TOLERANCE.				TITLE MHF [®] 5 RECEPTACLE	UNIT mm	SIZE SHEET REV. A3 2/5 9		
DWG.	DATE				DWG. No. 20566			
CHK.								
APP.								

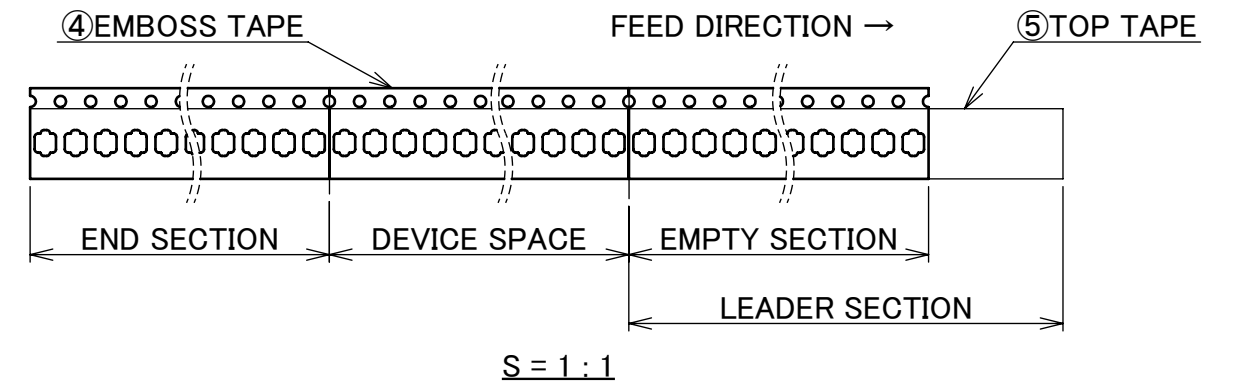
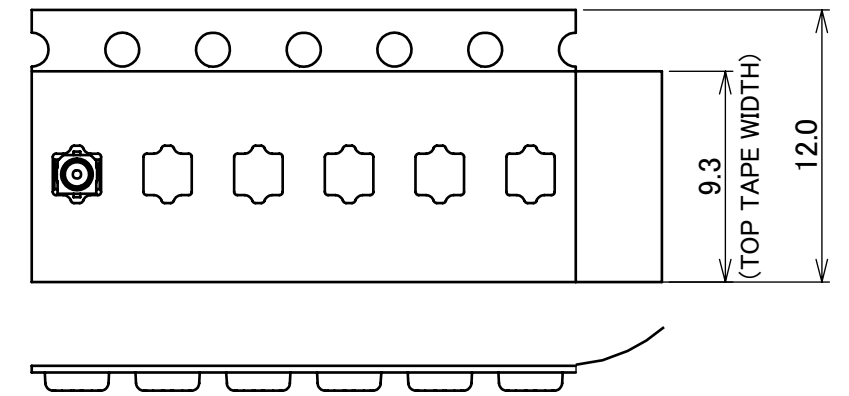
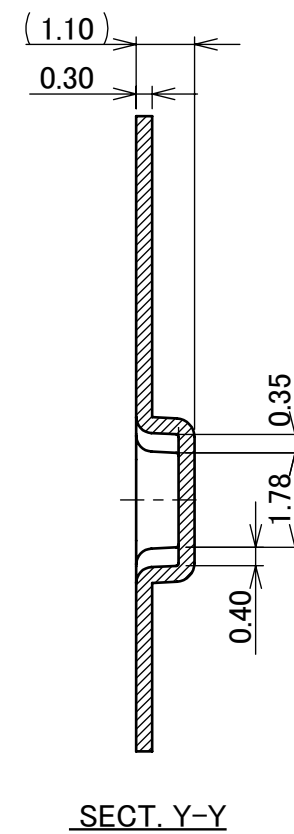
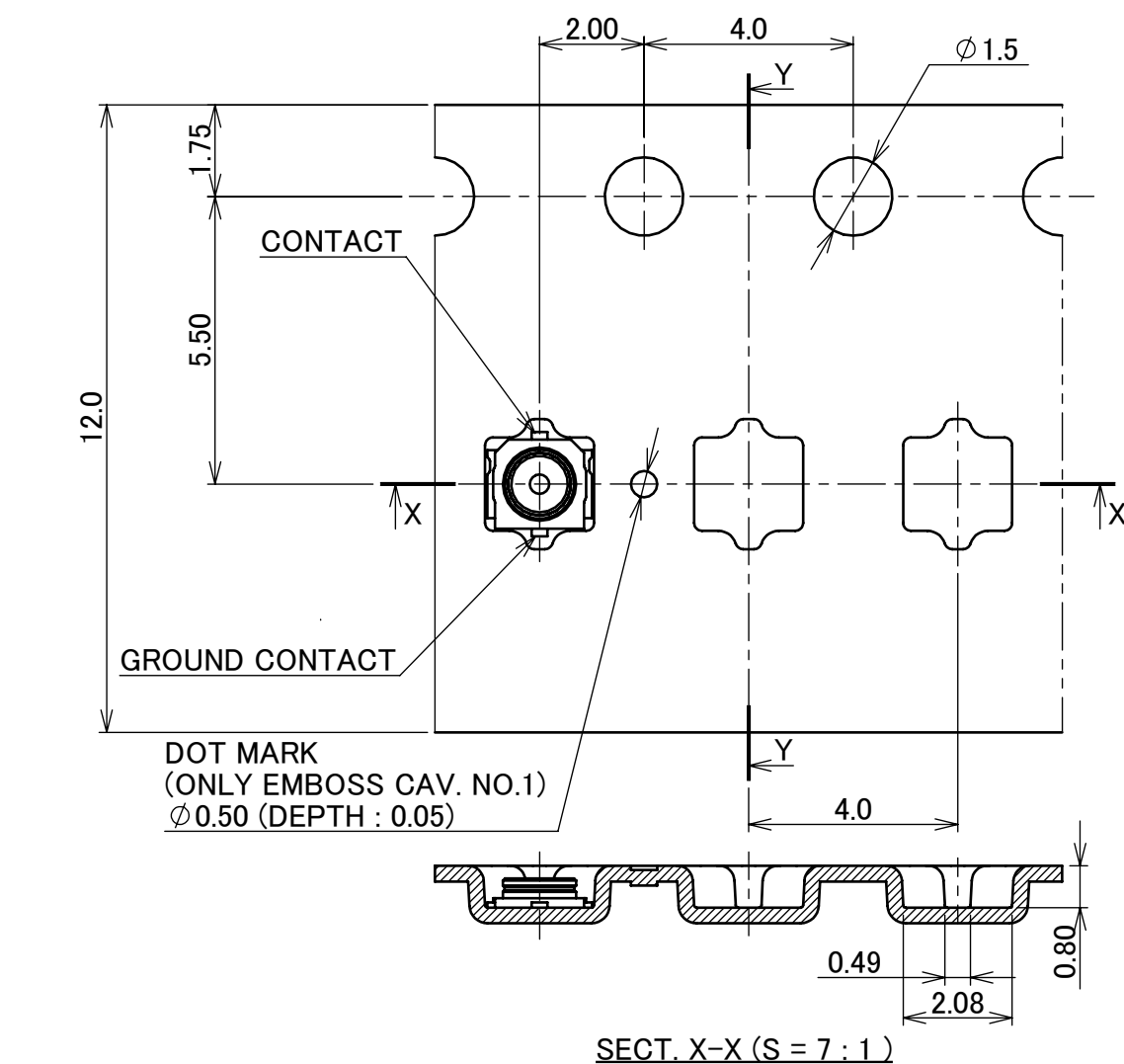
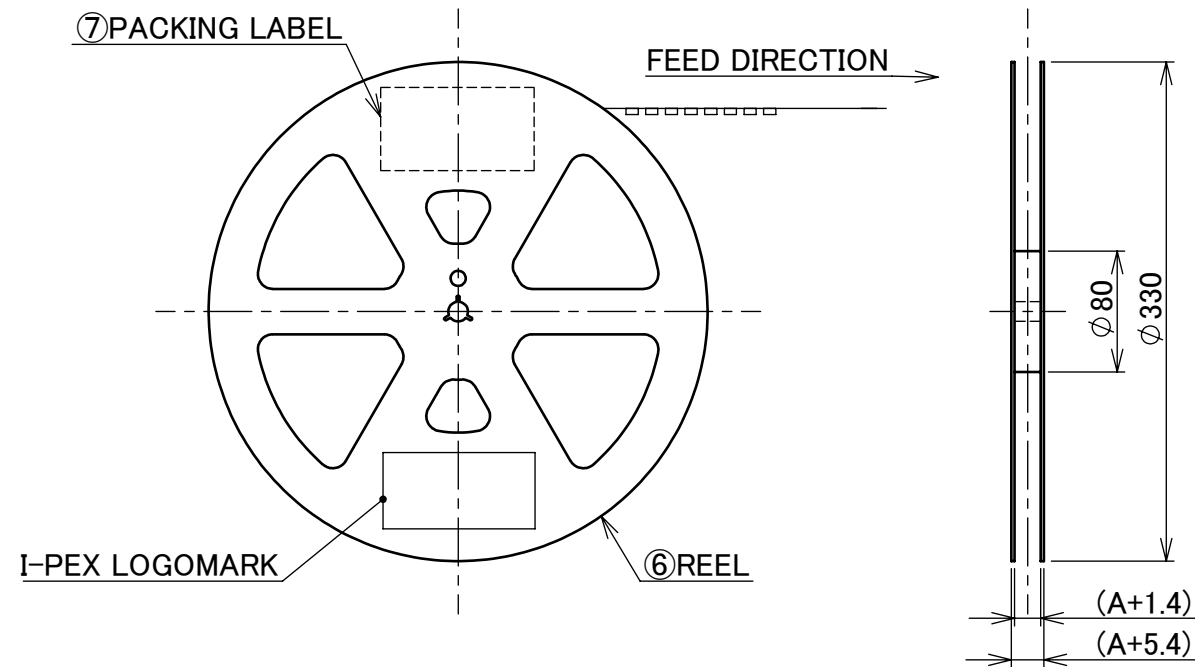


SENJU METAL INDUSTRY CO., LTD. : M705-SHF(Sn96.5 Ag3.0 Cu0.5)

NOTES.
5. NO GROUND, SIGNAL, AND RESIST IN THIS AREA.

ANGLE	±2°	6 OVER 30 MAX.	±0.3	PROJECTION ⊕	SERIES No. R6	CUSTOMER COPY			
6 MAX.	±0.2	30 OVER 120 MAX.	±0.5						
GENERAL TOLERANCE.				TITLE		SCALE	I-PEX		
DWG.	DATE			MHF® 5 RECEPTACLE		20:1			
CHK.						UNIT			
APP.				DWG. No. 20566		mm			
						SIZE	SHEET	REV.	
						A3	3/5	9	

PART NO.	A	QTY. PER EMBOSS REEL (PIECES / REEL)	QTY. PER PACKING CARTON (REELS / CARTON)
20566-001E-01	12.0	10,000 / REEL	9 REELS / CARTON = 90,000 PIECES



- NOTES.
6. TAPING SPECIFICATION FOLLOWS JIS C 0806 (IEC 60286-3).
 7. MAKE EMPTY SECTION OF LEADER AND END ON EACH END OF THE TAPE.
 8. TOP TAPE SHALL NOT STICK OUT FROM EMBOSS TAPE.
 9. TOP TAPE SHALL NOT COVER FEED HOLE.

NO.	DESCRIPTION	MATERIAL	FINISH, REMARKS
7	PACKING LABEL	-	-
6	REEL	PS	HEAT ACTIVATED, ANTI-STATIC TYPE, WHITE
5	TOP TAPE	PET t=0.062	ANTI-STATIC TYPE or CONDUCTIVE
4	EMBOSS TAPE	PS t=0.3	-

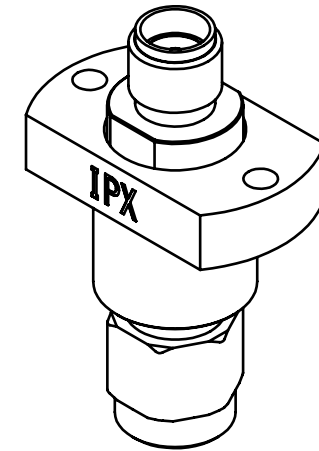
ANGLE	±2°	6 OVER 30 MAX.	±0.3	PROJECTION	⊕	SERIES No.	R6	CUSTOMER COPY			
6 MAX.	±0.2	30 OVER 120 MAX.	±0.5					SCALE	1:X		
GENERAL TOLERANCE.							TITLE	MHF® 5 RECEPTACLE			
DWG.	DATE							UNIT	mm		
CHK.								SIZE	SHEET	4/5	
APP.							DWG. No.	20566	REV.	9	



MHF 5 SMA ADAPTER
PART NO. 90543-0001

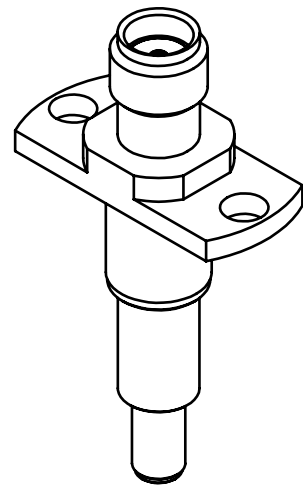


MHF 5 RECEPTACLE HIGH CYCLE ATTACHMENT
PART NO. 90690-0001

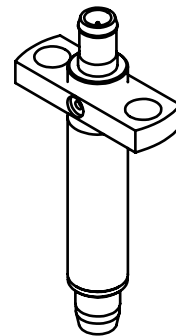


MHF SERIESE HIGH CYCLE ADAP BASE UNIT
PART NO. 90684-0001

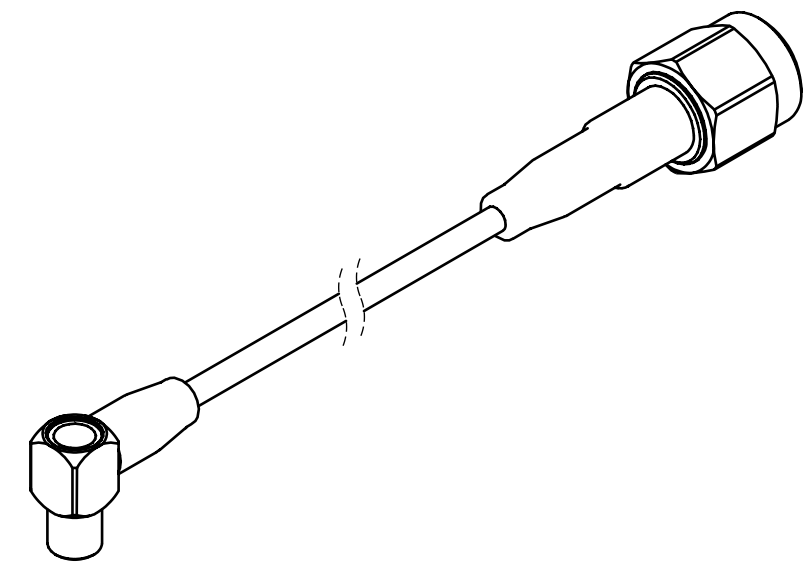
* 90690-0001 AND 90684-0001 SHOULD BE USED TOGETHER.



MHF 5 RECEPTACLE HIGH CYCLE SMA ADAPTER
PART NO. 90793-0001



MHF 5 RECEPTACLE HIGH CYCLE N45 C ADAPTER
PART NO. 90847-0001



MHF SERIES N45 C TO SMA ADAPTER CABLE
PART NO. 90577-****

* 90847-0001 AND 90577-**** SHOULD BE USED TOGETHER.

ANGLE	±2°	6 OVER 30 MAX.	±0.3	PROJECTION ⊕	SERIES No. R6	CUSTOMER COPY			
6 MAX.	±0.2	30 OVER 120 MAX.	±0.5						
GENERAL TOLERANCE.				TITLE		SCALE	I-PEX		
DWG.	DATE			MHF® 5 RECEPTACLE		-			
CHK.						UNIT			
APP.				DWG. No. 20566		mm			
						SIZE	SHEET	REV.	
						A3	5/5	9	