

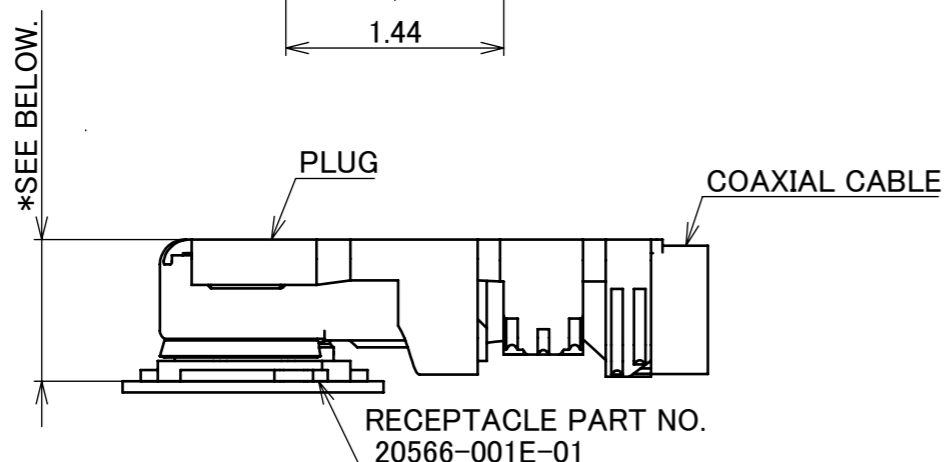
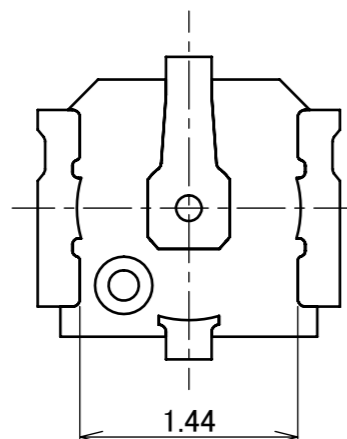
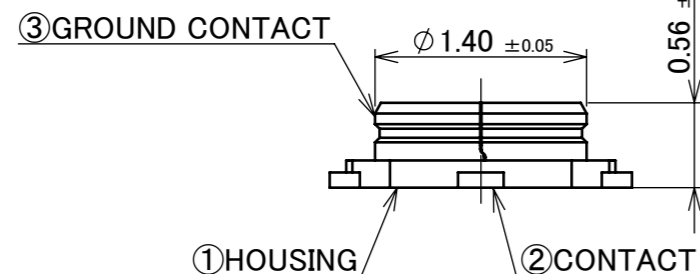
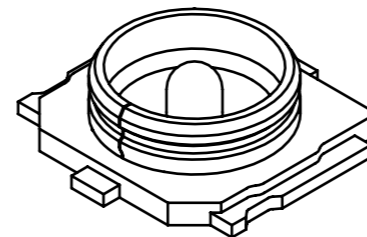
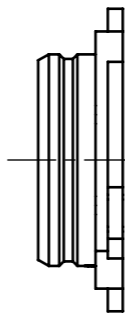
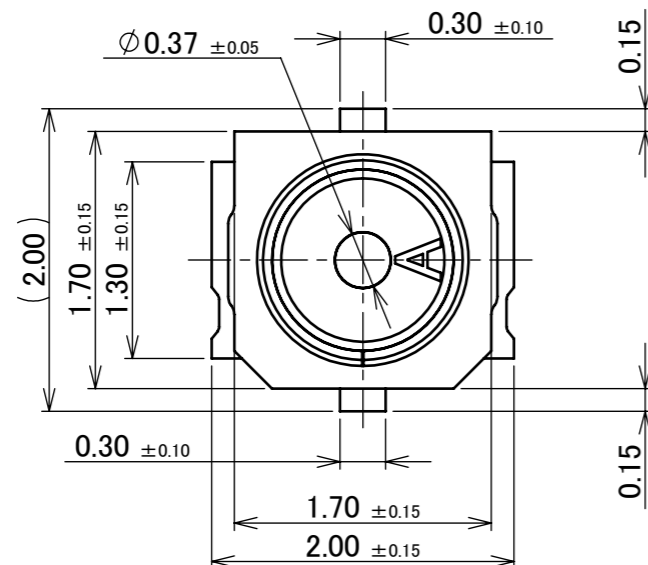
PART NO.
20566-001E-01



Halogen Free



RoHS Compliant



\* 1.3 MAX. AT 20668-001R-13, 20714-001R-81  
 \* 1.0 MAX. AT 20711-001R-81

MATING CONDITION

RECEPTACLE PART NO.  
20566-001E-01

NOTES

1. APPLICABLE CONNECTOR

- 20567-001R-81
- 20615-00\*R-48
- 20668-001R-13
- 20669-001R-81
- 20711-001R-81
- 20714-001R-81

2. COPLANARITY: 0.1mm MAX.

3. THIS IS "Pb-FREE" CONNECTOR.

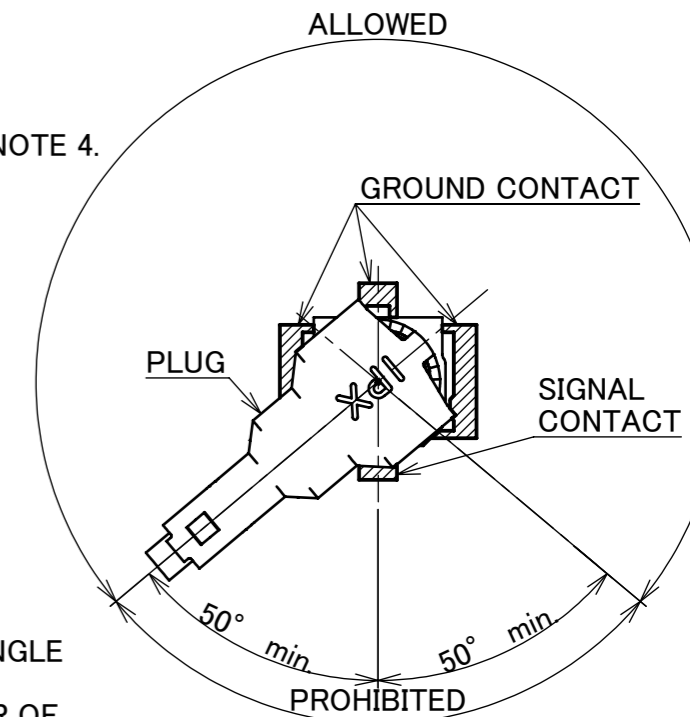
4. PRECAUTIONS FOR CABLE POSITION

[PART NO. 20567-001R-81, 20615-00\*R-48]

THE PLUG SHALL NOT BE PLACED WITHIN 50 DEGREES ANGLE FROM CENTER OF THE SIGNAL CONTACT.

TILT THE PLUG AT LEAST 50 DEGREES FROM THE CENTER OF A SIGNAL CONTACT.

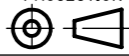
NOTE 4.

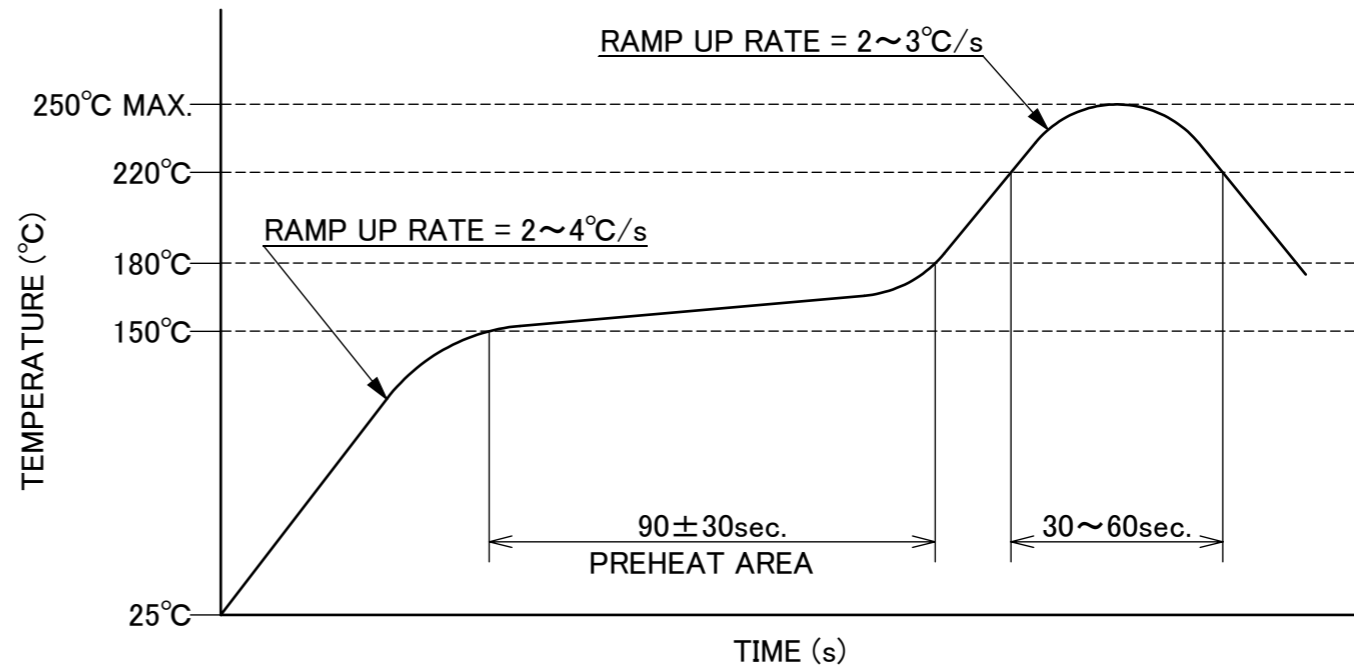
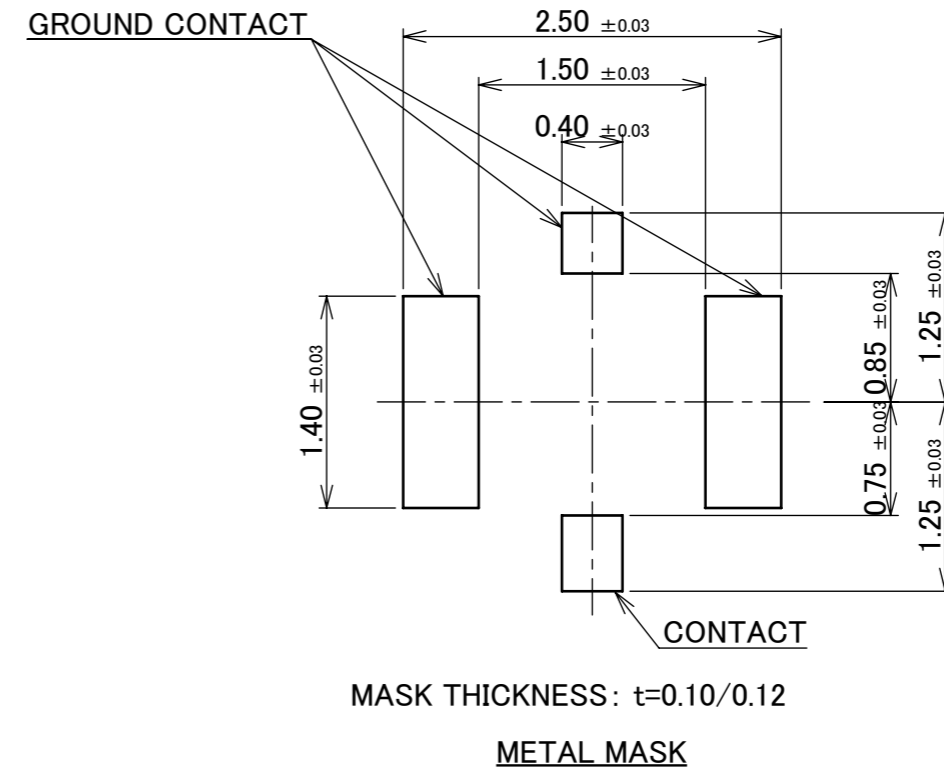
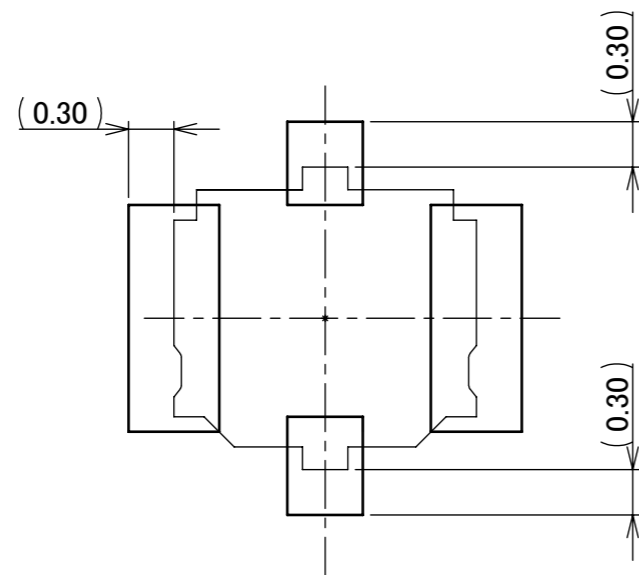
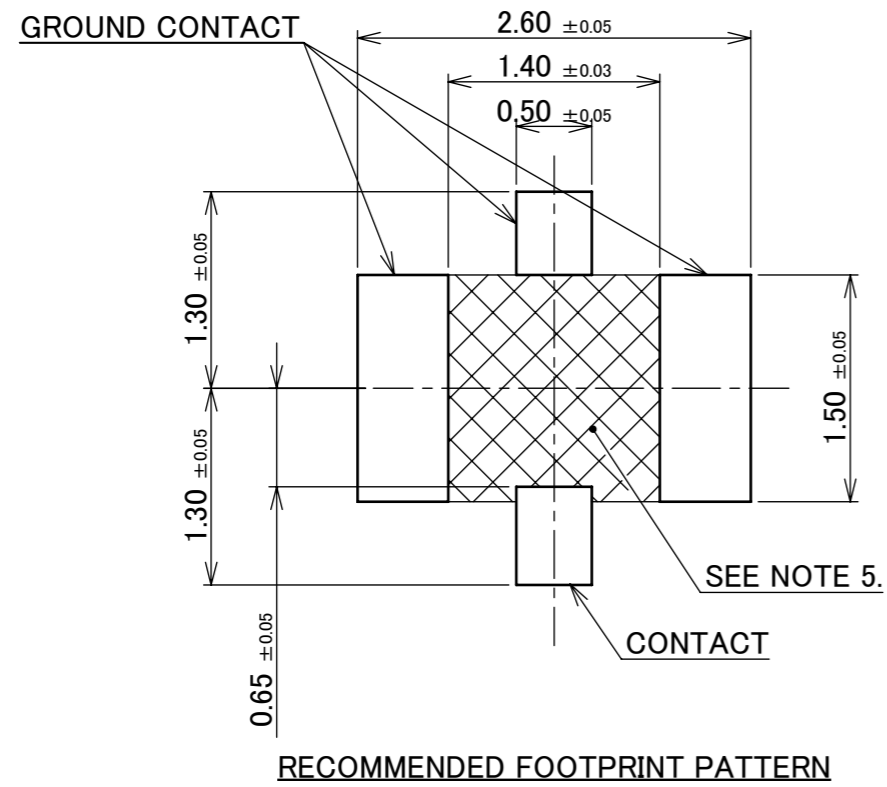


NO.	DESCRIPTION	MATERIAL	FINISH, REMARKS
3	GROUND CONTACT	PHOSPHOR BRONZE	ALL OVER Ni 1.00 μm MIN. CONTACT PART Au 0.01 μm MIN. UNDER PLATE Pd-Ni 0.02 μm MIN. SOLDERING PART Au 0.01 μm MIN. UNDER PLATE Pd-Ni 0.02 μm MIN.
2	CONTACT	BRASS	ALL OVER Ni 1.00 μm MIN. CONTACT PART Au 0.1 μm MIN. SOLDERING PART Au 0.03 μm MIN.
1	HOUSING	LCP	UL94V-0, BLACK

REV.	ECN	BY	DATE	APP.	APP.	DATE	DWG. No.	SIZE	SHEET	REV.	
8	Z220655	K.W	2022/06/13	Y.H	ANGLE	±2°	6 OVER 30 MAX.	±0.3	PROJECTION	SERIES No. R6	CUSTOMER COPY
7	Z210267	TOI	2021/03/16	M.T	6 MAX.	±0.2	30 OVER 120 MAX.	±0.5	⊕		
6	Z180766	M.N	2018/09/14	Ken	GENERAL TOLERANCE.			TITLE MHF® 5 RECEPTACLE	SCALE 20:1 UNIT mm	I-PEX	
5	Z180428	M.N	2018/03/30	Ken	DWG.	H.Kon	DATE				2012/12/07
4	Z150479	H.T	2015/05/25	Tom	CHK.	K.Yotsutani	DATE				2012/12/07
3	Z141459	Y.H	2014/12/22	Tom	APP.	T.Takano	DATE				2012/12/07
REVISION RECORD								20566	A3	1/5	8

ITEMS	SPECIFICATION				
RECOMMENDED APPLICABLE CONNECTOR PART No.	20668-001R-13	20711-001R-81 (CABLE AWG#36 $\phi$ 0.81)	20714-001R-81	20711-001R-81 (CABLE AWG#36 $\phi$ 0.64)	20615-001R-48 (ALL Au PLATING TYPE)
RATING VOLTAGE	60 V AC (R.M.S)				
RATING FREQUENCY	DC~15 GHz				
OPERATING TEMPERATURE	233~363 K (-40°C~+90°C)				
VSWR (MATED WITH SMA ADAPTER PART No. 90543-0001)	1.30 MAX. AT 0.1~3 GHz, 1.40 MAX. AT 3~6 GHz, 1.50 MAX. AT 6~12 GHz, 1.65 MAX. AT 12~15 GHz				
MAIN CONTACT RESISTANCE	INITIAL: 20 mohm MAX. / AFTER TEST: $\Delta$ R 20 mohm MAX.				
GROUND CONTACT RESISTANCE	INITIAL: 20 mohm MAX. / AFTER TEST: $\Delta$ R 100 mohm MAX.				INITIAL: 20 mohm MAX. / AFTER TEST: $\Delta$ R 20 mohm MAX.
INSULATION RESISTANCE	INITIAL: 500 Mohm MIN. / AFTER TEST: 100 Mohm MIN.				
DIELECTRIC WITHSTANDING VOLTAGE	200 V AC, 1 MINUTE				
DURABILITY	30 CYCLES				
UNMATING FORCE (INITIAL / AFTER TEST)	INITIAL: 5 N MIN. AFTER TEST: 3 N MIN.	INITIAL: 4 N MIN. AFTER TEST: 2 N MIN.	INITIAL: 5 N MIN. AFTER TEST: 3 N MIN.	INITIAL: 4 N MIN. AFTER TEST: 2 N MIN.	INITIAL: 4 N MIN. AFTER TEST: 2 N MIN.
PRODUCT SPECIFICATION	PRS-2192	PRS-2108	PRS-2236	PRS-2109	PRS-1939
TEST REPORT	TR-16003	TR-15062	TR-16049	TR-15063	TR-14026
PACKING STANDARD	PST-12036				
INSTRUCTION MANUAL	HIM-16014	HIM-16013	HIM-16014	HIM-16013	HIM-13003
APPEARANCE CRITERIA No.	QLS-A***				

ANGLE	$\pm 2^\circ$	6 OVER 30 MAX.	$\pm 0.3$	PROJECTION 	SERIES No. R6	CUSTOMER COPY		
6 MAX.	$\pm 0.2$	30 OVER 120 MAX.	$\pm 0.5$					
GENERAL TOLERANCE.				TITLE MHF <sup>®</sup> 5 RECEPTACLE	SCALE -	<b>I-PEX</b>		
DWG.	DATE							
CHK.								
APP.								
				DWG. No.	20566	SIZE A3	SHEET 2/5	REV. 8

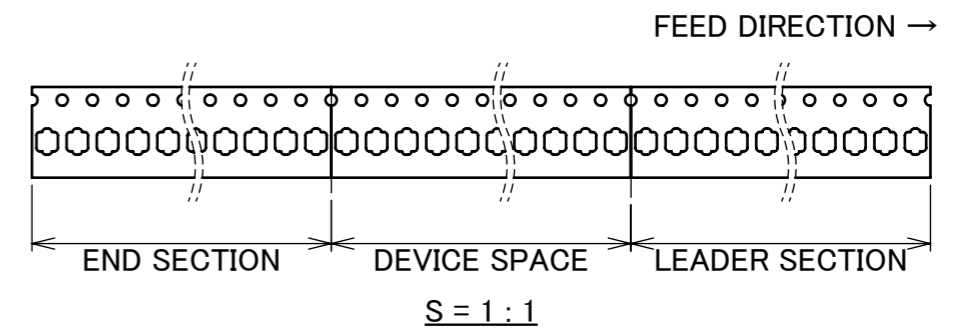
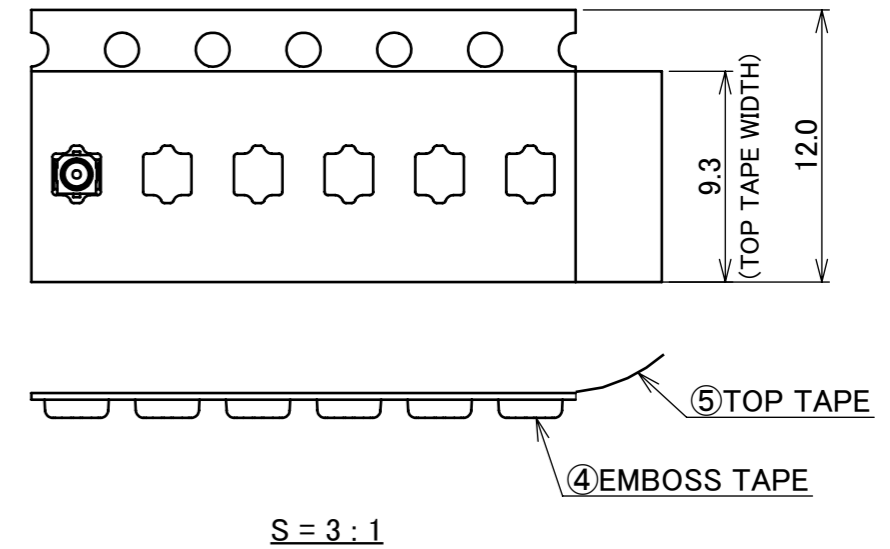
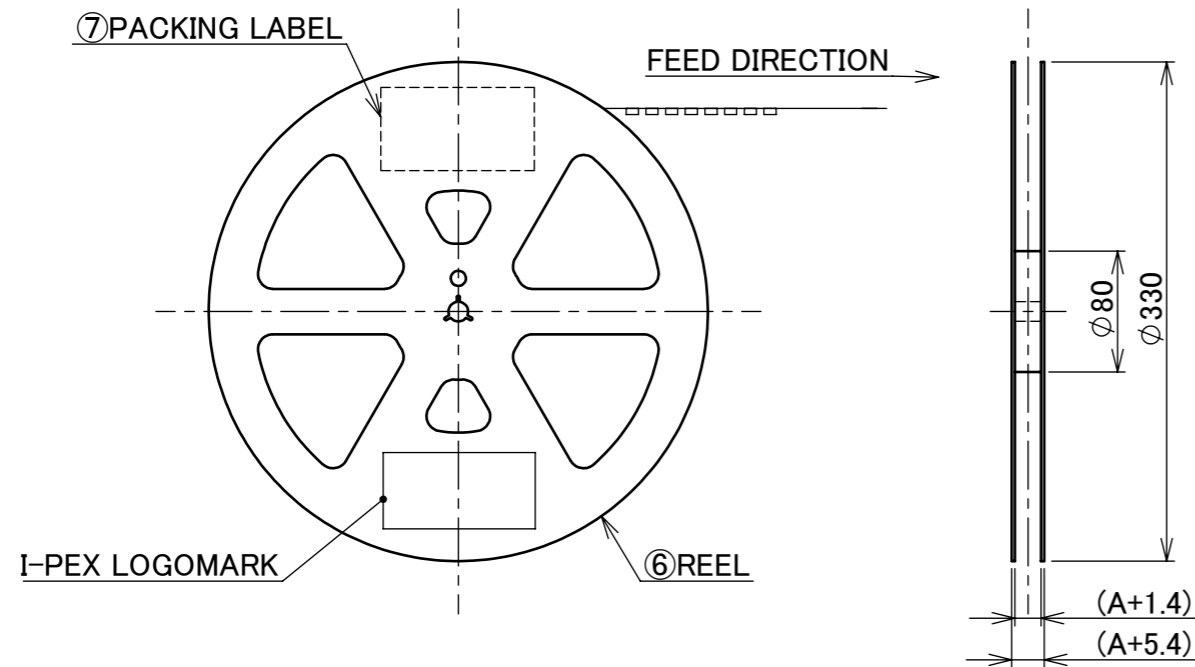


SENJU METAL INDUSTRY CO., LTD. : M705-SHF(Sn96.5 Ag3.0 Cu0.5)

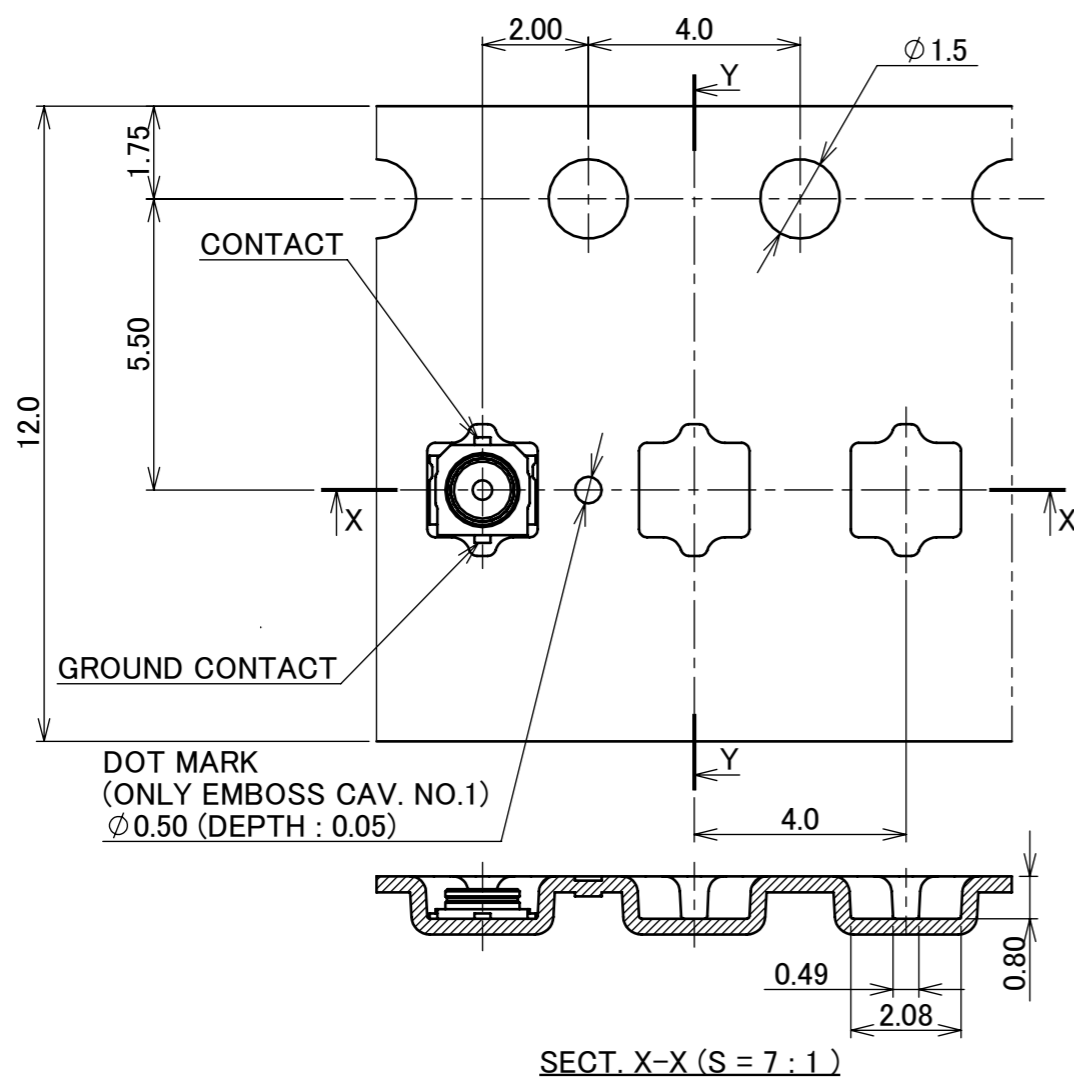
NOTES.  
5. CUT OUT PROHIBITION AREA

ANGLE	±2°	6 OVER 30 MAX.	±0.3	PROJECTION ⊕	SERIES No. R6	CUSTOMER COPY		
6 MAX.	±0.2	30 OVER 120 MAX.	±0.5					
GENERAL TOLERANCE.				TITLE		SCALE	I-PEX	
DWG.	DATE			MHF® 5 RECEPTACLE		20:1		
CHK.						UNIT		
APP.				DWG. No.		SIZE	SHEET	REV.
				20566		A3	3/5	8

PART NO.	A	QTY. PER EMBOSS REEL (PIECES / REEL)	QTY. PER PACKING CARTON (REELS / CARTON)
20566-001E-01	12.0	10,000 / REEL	9 REELS / CARTON = 90,000 PIECES



- NOTES.
- TAPING SPECIFICATION FOLLOWS JIS C 0806 (IEC 60286-3).
  - MAKE EMPTY SECTION OF LEADER AND END ON EACH END OF THE TAPE.
  - TOP TAPE SHALL NOT STICK OUT FROM EMBOSS TAPE.
  - TOP TAPE SHALL NOT COVER FEED HOLE.



NO.	DESCRIPTION	MATERIAL	FINISH, REMARKS
7	PACKING LABEL	-	-
6	REEL	PS	HEAT ACTIVATED, ANTI-STATIC TYPE, WHITE
5	TOP TAPE	PET t=0.062	ANTI-STATIC TYPE or CONDUCTIVE
4	EMBOSS TAPE	PS t=0.3	-

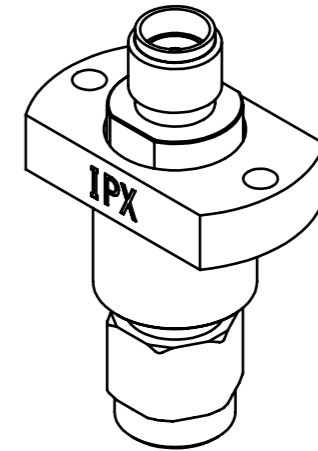
ANGLE	±2°	6 OVER 30 MAX.	±0.3	PROJECTION ⊕	SERIES No. R6	CUSTOMER COPY			
6 MAX.	±0.2	30 OVER 120 MAX.	±0.5			SCALE -	I-PEX		
GENERAL TOLERANCE.				TITLE MHF® 5 RECEPTACLE	UNIT mm	SIZE A3		SHEET 4/5	REV. 8
DWG.	DATE				DWG. No.				
CHK.									
APP.									



SMA ADAPTOR FOR MHF 5 PLUG  
PART NO. 90543-0001

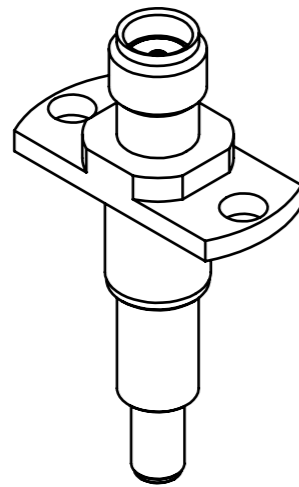


MHF 5 HIGH CYCLE PROBE  
PART NO. 90690-0001

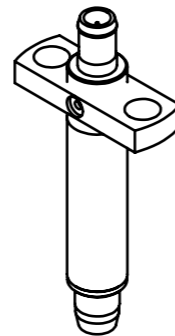


MHF 5 HIGH CYC ADAP BASE UNIT  
PART NO. 90684-0001

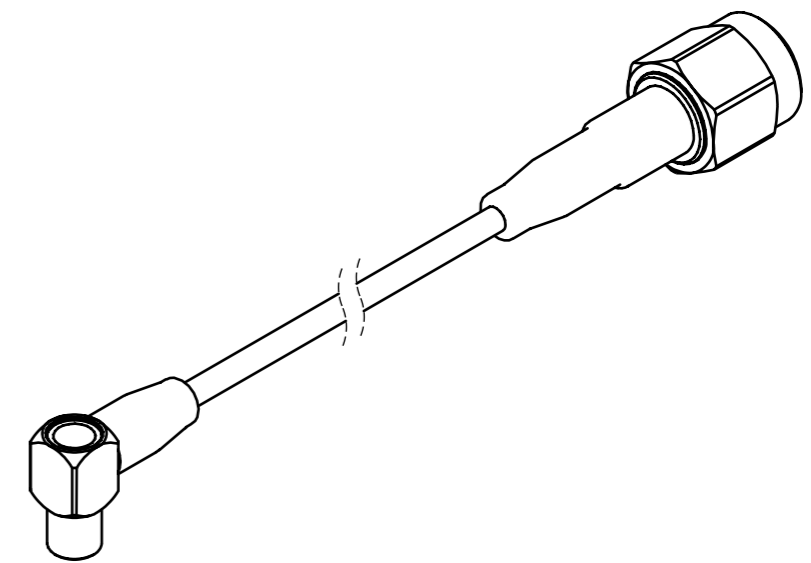
\* 90690-0001 AND 90684-0001 SHOULD BE USED TOGETHER.



MHF 5 HIGH CYCLE ADAPTOR  
PART NO. 90793-0001



MHF 5 4.5MM HIGH CYCLE TEST PROBE LONG TYPE  
PART NO. 90847-0001



4.5MM HIGH CYCLE TEST PROBE CABLE ASS'Y  
PART NO. 90577-\*\*\*\*

\* 90847-0001 AND 90577-\*\*\*\* SHOULD BE USED TOGETHER.

ANGLE	±2°	6 OVER 30 MAX.	±0.3	PROJECTION ⊕	SERIES No. R6	CUSTOMER COPY		
6 MAX.	±0.2	30 OVER 120 MAX.	±0.5					
GENERAL TOLERANCE.				TITLE MHF® 5 RECEPTACLE	SCALE	<b>I-PEX</b>		
DWG.	DATE				-			
CHK.					UNIT			
APP.					mm			
				DWG. No.	20566	SIZE	SHEET	REV.
						A3	5/5	8