

Recommended P/N 20579-001E

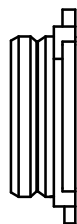
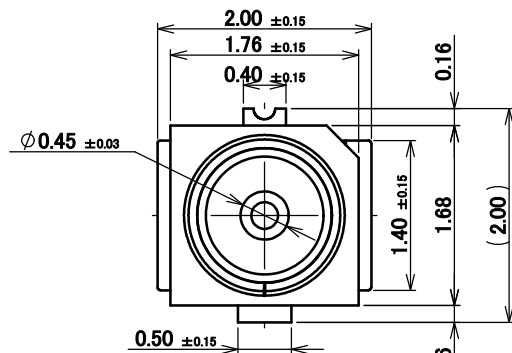
PART NO.	PACKING QUANTITY / REEL
20579-001E	10,000 PCS.
20579-001E-01	20,000 PCS.



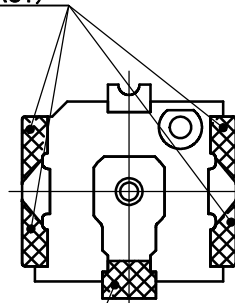
Halogen Free



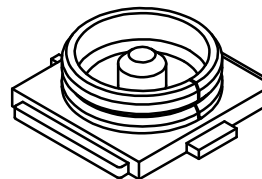
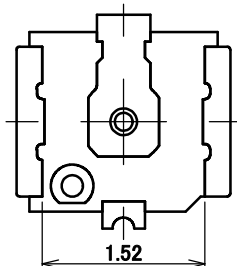
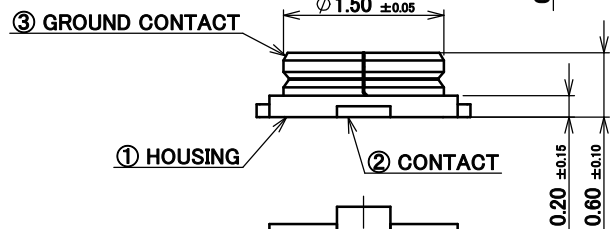
RoHS Compliant



SMT Au PLATING AREA
(GROUND CONTACT)

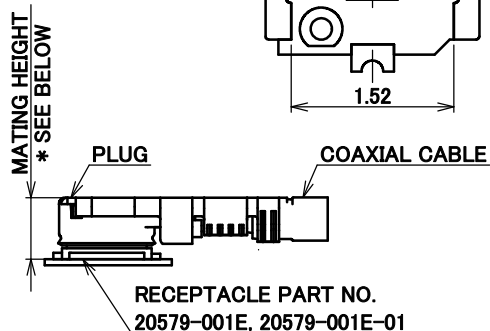


SMT Au PLATING AREA
(CONTACT)



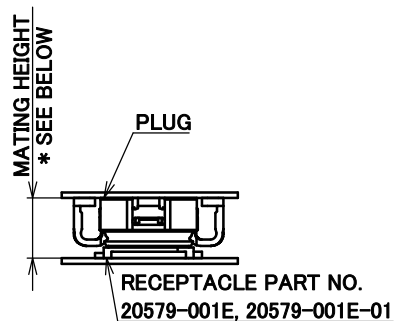
NOTES.

- APPLICABLE CONNECTOR (CABLE SIZE)
 - MHF 4 PLUG: 20611-001R (Φ0.81)
20448-00*R-081 (Φ0.81)
20448-001R-081E (Φ0.81)
 - MHF 4L PLUG: 20572-001R-08 (Φ0.64, Φ0.81)
20565-001R-** (Φ0.83, Φ0.95, Φ1.13)
20632-001R-37 (Φ1.37)
 - MHF 4 SMT PLUG: 20462-001E
- COPLANARITY: 0.1 mm MAX.



*** MATING HEIGHT**
 1.2 MAX. WITH 20611-001R, 20572-001R-08,
 20448-00*R-081, 20448-001R-081E
 1.4 MAX. WITH 20565-001R-**
 1.7 MAX. WITH 20632-001R-37
 (2.0 MAX. WITH MHF 4L LK LOCKED CONDITION)

MATING CONDITION
 WITH MHF 4/MHF 4L PLUG
 (S = 10/1)



*** MATING HEIGHT**
 1.2 MAX. WITH 20462-001E

MATING CONDITION
 WITH MHF 4 SMT
 (S = 10/1)

NO.	DESCRIPTION	MATERIAL	FINISH , REMARKS
3	GROUND CONTACT	PHOSPHOR BRONZE	ALL OVER Ni 1.00 μm MIN. CONTACT PART: Au 0.05 μm MIN. , SOLDERING PART Au AREA: 0.03 μm MIN.
2	CONTACT	BRASS	ALL OVER Ni 1.00 μm MIN. CONTACT PART: Au 0.05 μm MIN. SOLDERING PART Au AREA: 0.03 μm MIN.
1	HOUSING	LCP	UL94V-0, BLACK

REV.	ECN	BY	DATE	APP.	APP.	REVISION RECORD	PROJECTION	SERIES No.	TITLE	SCALE	CUSTOMER COPY	
13	Z230518	K.M	2023/05/10	Y.H	ANGLE	±2°	6 OVER 30 MAX.	±0.3	 MHF® 4L RECEPTACLE	20:1		
12	Z230201	TOI	2023/02/20	Y.H	6 MAX.	±0.2	30 OVER 120 MAX.	±0.5				
11	Z220592	K.W	2022/05/30	Y.H	GENERAL TOLERANCE.							
10	Z210723	S.T	2021/07/02	M.T	DWG.	DATE						
9	Z210062	TOI	2021/01/22	M.T	K.Hashiba		2014/09/22		UNIT	mm		
8	Z190288	SEI	2019/02/28	TAK	T.Tagawa			SIZE	A3			
REV.	ECN	BY	DATE	APP.	T.Takano		DWG. No.	20579			SHEET	1/8


FOR MHF 4L PLUG

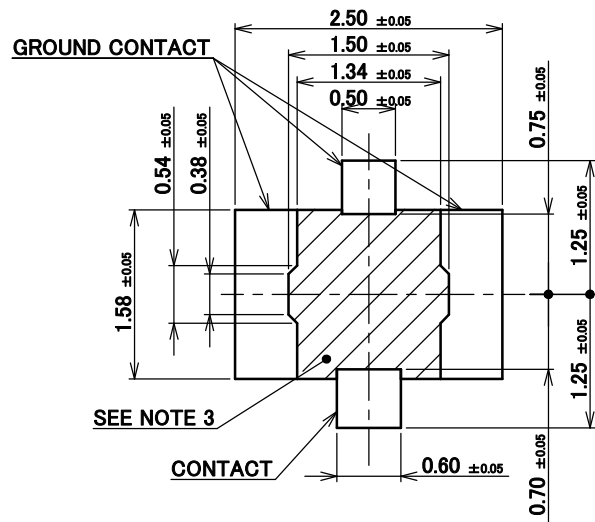
ITEMS	SPECIFICATION	
APPLICABLE CONNECTOR PART No.	20572-001R-08 (CABLE Φ0.81 TYPE)	20565-001E-13 (CABLE Φ1.13 TYPE)
RATING VOLTAGE	60 V AC (R.M.S)/DC	
RATING FREQUENCY	DC ~ 12GHz	
OPERATING TEMPERATURE	233~363 K(-40°C~+90°C)	
VSWR (MATED WITH SMA ADAPTER PART No. 90449-002)	1.30 MAX. AT 0.1~3GHz, 1.40 MAX. AT 3~6GHz, 1.50 MAX. 6~9GHz. 1.65 MAX. AT 9~12GHz	
MAIN CONTACT RESISTANCE	INITIAL : 20 mohm MAX. / AFTER TEST : Δ R 20 mohm MAX.	
GROUND CONTACT RESISTANCE	INITIAL : 20 mohm MAX. / AFTER TEST : Δ R 20 mohm MAX.	
INSULATION RESISTANCE	INITIAL : 500 Mohm MIN. / AFTER TEST : 100 Mohm MIN.	
DIELECTRIC WITHSTANDING VOLTAGE	200 V AC 1 MINUTE	
DURABILITY	30 CYCLES	
MATING FORCE (INITIAL / AFTER TEST)	INITIAL : 30 N MAX. / AFTER TEST : 30 N MAX.	
UNMATING FORCE (INITIAL / AFTER TEST)	INITIAL : 20 N MAX. 5 N MIN. / AFTER TEST : 20 N MAX. 3 N MIN.	
PRODUCT SPECIFICATION	PRS-1907	
TEST REPORT	TR-14097	
PACKING STANDARD	20579-001E: PST-14004 20579-001E-01: PST-14067	
INSTRUCTION MANUAL	HIM-12011	HIM-12012
APPEARANCE CRITERIA No.	QLS-A***	

ANGLE	$\pm 2^\circ$	6 OVER 30 MAX.	± 0.3	PROJECTION	SERIES No.	CUSTOMER COPY
6 MAX.	± 0.2	30 OVER 120 MAX.	± 0.5		R1	
GENERAL TOLERANCE.				TITLE	MHF® 4L RECEPTACLE	SCALE
DWG.	DATE					-
CHK.						UNIT
APP.						mm
				DWG. No.	20579	SIZE SHEET REV.
						A3 2/8 13

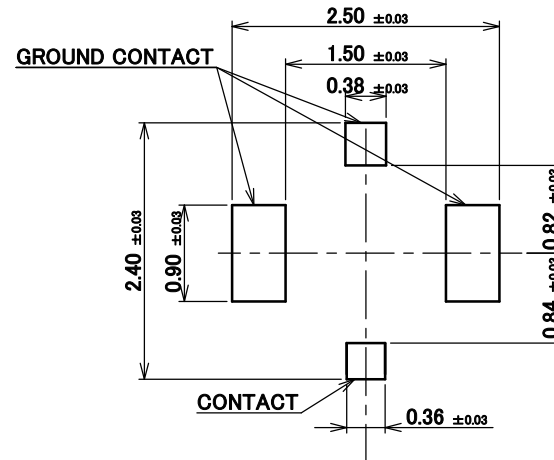
FOR MHF 4 SMT PLUG

ITEMS	SPECIFICATION
APPLICABLE CONNECTOR PART No.	20462-001E (MHF 4 SMT PLUG)
RATING VOLTAGE	60 V AC (R.M.S)/DC
RATING FREQUENCY	DC~12GHz
OPERATING TEMPERATURE	233~363 K(-40°C~+90°C)
VSWR (MATED WITH SMA ADAPTER PART No. 90449-002)	1.30 MAX. AT 0.1~3GHz, 1.40 MAX. AT 3~6GHz, 1.50 MAX. 6~9GHz. 1.65 MAX. AT 9~12GHz
MAIN CONTACT RESISTANCE	INITIAL : 20 mohm MAX. / AFTER TEST : \angle R 20 mohm MAX.
GROUND CONTACT RESISTANCE	INITIAL : 20 mohm MAX. / AFTER TEST : \angle R 20 mohm MAX.
INSULATION RESISTANCE	INITIAL : 500 Mohm MIN. AFTER TEST : 100 Mohm MIN.
DIELECTRIC WITHSTANDING VOLTAGE	200 V AC 1 MINUTE
DURABILITY	30 CYCLES
MATING FORCE (INITIAL / AFTER TEST)	INITIAL : 30 N MAX. / AFTER TEST : 15 N MAX.
UNMATING FORCE (INITIAL / AFTER TEST)	INITIAL : 4 N MIN. / AFTER TEST : 2 N MIN.
PRODUCT SPECIFICATION	PRS-1404
TEST REPORT	TR-08022
PACKING STANDARD	20579-001E: PST-14004 20579-001E-01: PST-14067
APPEARANCE CRITERIA No.	QLS-A***

ANGLE	$\pm 2^\circ$	6 OVER 30 MAX.	± 0.3	PROJECTION 	SERIES No. R1	CUSTOMER COPY		
6 MAX.	± 0.2	30 OVER 120 MAX.	± 0.5					
GENERAL TOLERANCE.				TITLE MHF® 4L RECEPTACLE	SCALE -	I-PEX		
DWG.	DATE							
CHK.								
APP.								
				DWG. No.	20579	SIZE	SHEET	REV.
						A3	3/8	13

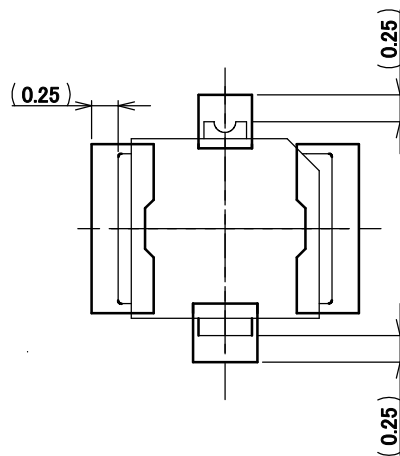


RECOMMENDED FOOTPRINT PATTERN

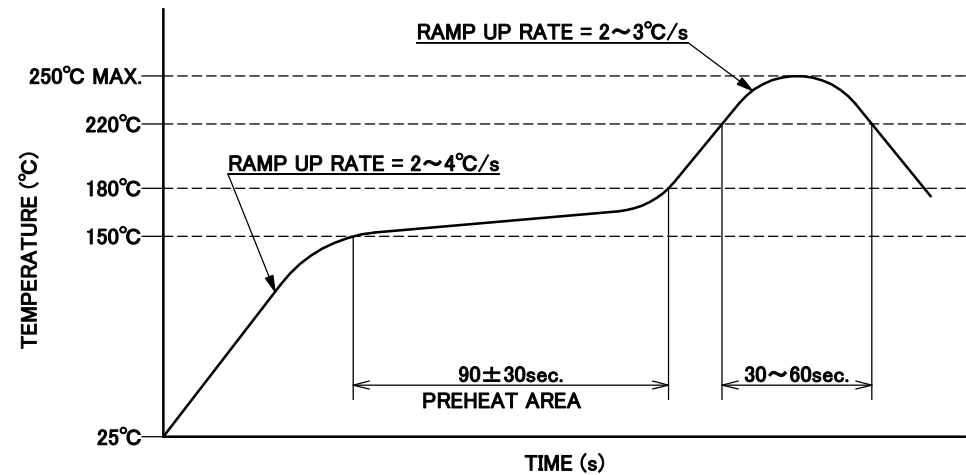


MASK THICKNESS: 0.12 mm

RECOMMENDED METAL MASK LAYOUT



CONNECTOR ON RECOMMENDED FOOTPRINT PATTERN



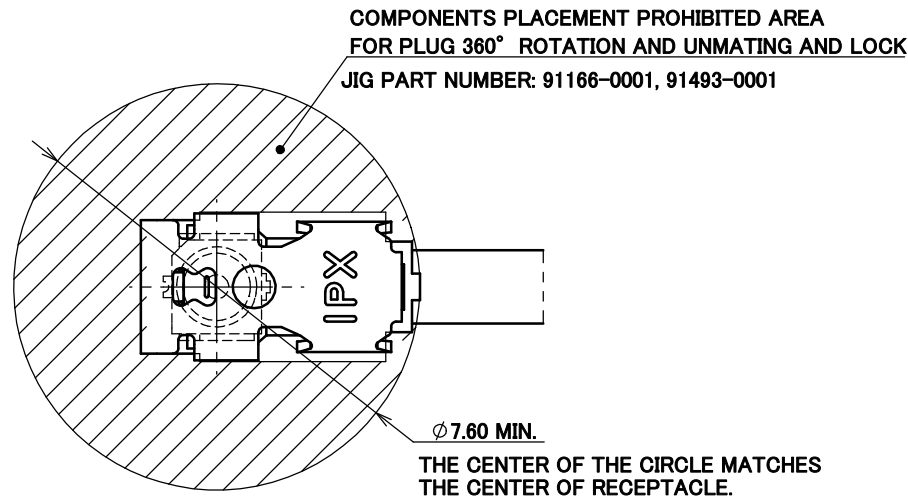
REFLOW TEMPERATURE PROFILE
SENJU METAL INDUSTRY CO., LTD. : M705-SHF(Sn96.5 Ag3.0 Cu0.5)

NOTE 3. CUT OUT PROHIBITION AREA.

ANGLE	$\pm 2^{\circ}$	6 OVER 30 MAX.	± 0.3	PROJECTION	SERIES No.	CUSTOMER COPY		
6 MAX.	± 0.2	30 OVER 120 MAX.	± 0.5		R1			
GENERAL TOLERANCE.				TITLE	SCALE			
DWG.	DATE			MHF [®] 4L RECEPTACLE	20:1			
CHK.					UNIT			
APP.					mm			
				DWG. No.	20579	SIZE	SHEET	REV.
						A3	4/8	13

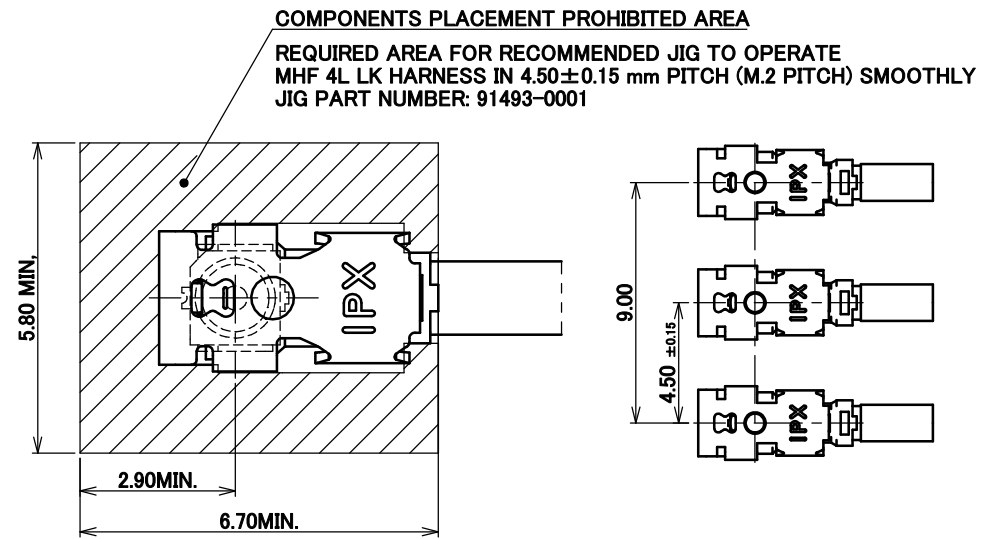
COMPONENT PLACEMENT PROHIBITED AREA FOR MHF 4L RECEPTACLE MATED WITH MHF 4L LK HARNESS REQUIRED AREA FOR RECOMMENDED JIG TO OPERATE

SINGLE CONNECTOR LAYOUT



MATING AND LOCK CONDITION
WITH MHF 4L LK HARNESS
(S = 10/1)

MULTIPLE CONNECTORS LAYOUT

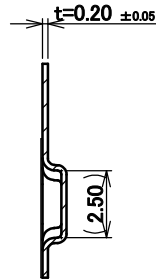
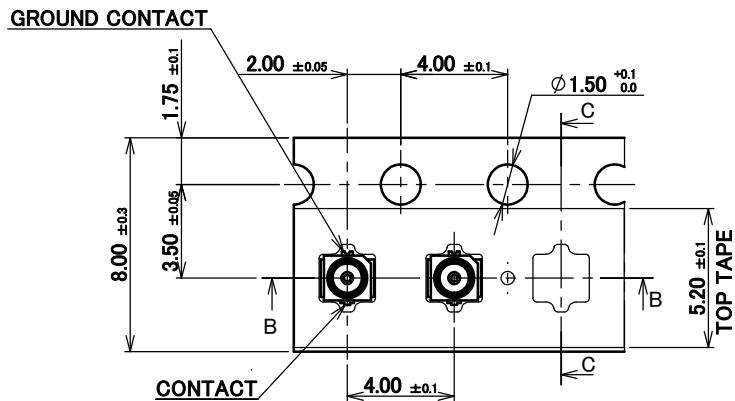
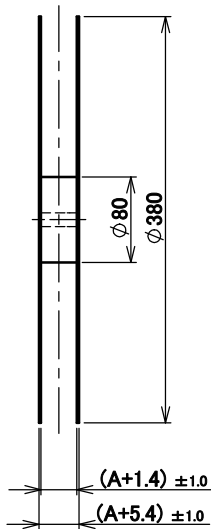
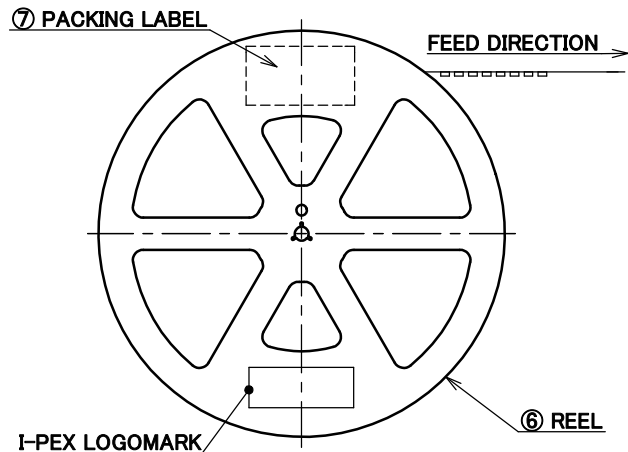


MATING AND LOCK CONDITION
WITH MHF 4L LK HARNESS NARROW PITCH
(S = 10/1)

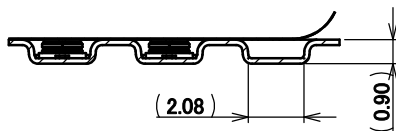
MHF 4L LK HARNESS UNLOCK CONDITION
NARROW PITCH DIMENSIONS
(S = 5/1)

ANGLE	±2°	6 OVER 30 MAX.	±0.3	PROJECTION	SERIES No.	CUSTOMER COPY		
6 MAX.	±0.2	30 OVER 120 MAX.	±0.5		R1	SCALE		
GENERAL TOLERANCE.				TITLE	MHF® 4L RECEPTACLE	10:1		
DWG.	DATE			UNIT		I-PEX		
CHK.				mm				
APP.				DWG. No.	20579	SIZE	SHEET	REV.
						A3	5/8	13

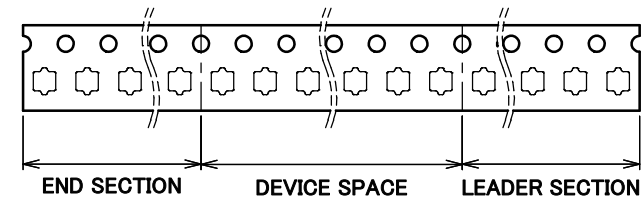
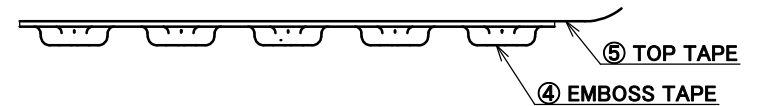
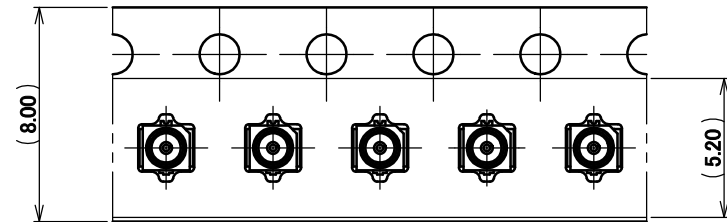
PART NO.	A	QTY. PER EMBOSS REEL (PIECES / REEL)	QTY. PER PACKING CARTON (REELS / CARTON)
20579-001E	8	10,000 / REEL	9 REELS/ CARTON = 90,000 PIECES



SECT. C-C
(S = 5:1)



SECT. B-B
(S = 5:1)



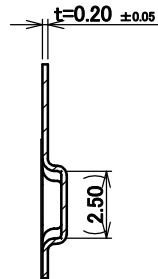
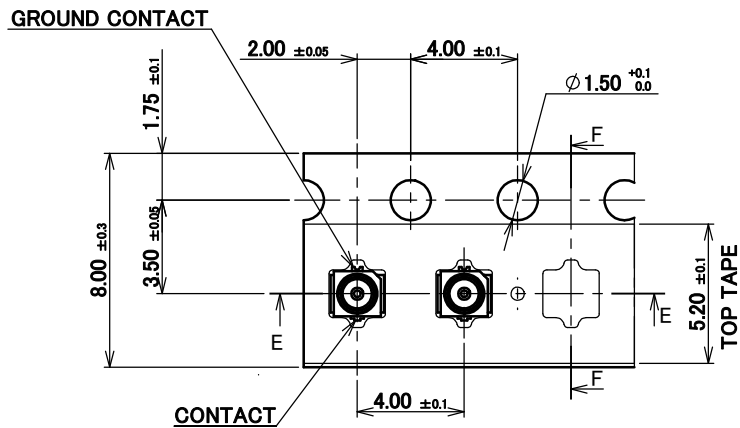
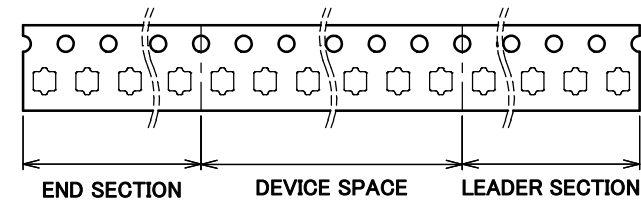
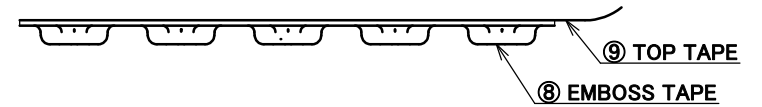
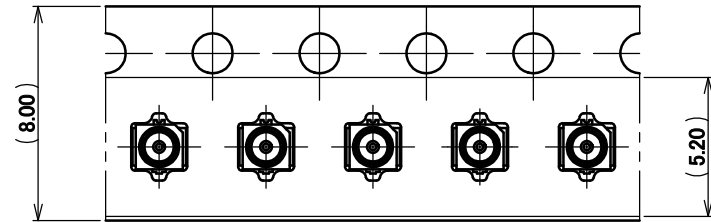
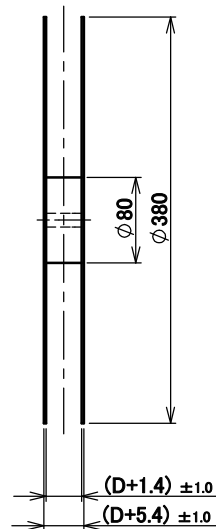
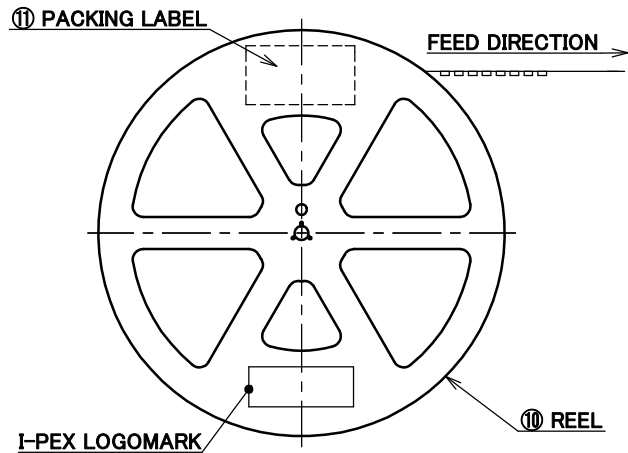
NOTES.

- TAPING SPECIFICATION FOLLOWS JIS C 0806 (IEC 60286-3).
- MAKE EMPTY SECTION OF LEADER AND END ON EACH END OF THE TAPE.
- TOP TAPE SHALL NOT STICK OUT FROM EMBOSS TAPE.
- TOP TAPE SHALL NOT COVER FEED HOLE.

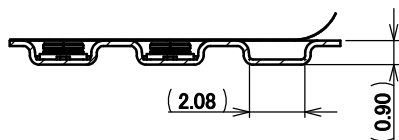
NO.	DESCRIPTION	MATERIAL	FINISH, REMARKS
7	PACKING LABEL	-	-
6	REEL	PS	ANTI-STATIC TYPE
5	TOP TAPE	PET	ANTI-STATIC TYPE HEAT ACTIVATED
4	EMBOSS TAPE	PS t=0.2	ANTI-STATIC TYPE OR CONDUCTIVE

ANGLE	±2°	6 OVER 30 MAX.	±0.3	PROJECTION		SERIES No.	R1	CUSTOMER COPY						
6 MAX.	±0.2	30 OVER 120 MAX.	±0.5	TITLE	MHF® 4L RECEPTACLE	SCALE	-	I-PEX						
GENERAL TOLERANCE.				DWG.	DATE	UNIT	mm							
				CHK.		SIZE	A3				SHEET	6/8	REV.	13
				APP.		DWG. No.	20579							

PART NO.	D	QTY. PER EMBOSS REEL (PIECES / REEL)	QTY. PER PACKING CARTON (REELS / CARTON)
20579-001E-01	8	20,000 / REEL	10 REELS/ CARTON = 200,000 PIECES



SECT. F-F
(S = 5:1)



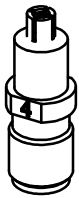
SECT. E-E
(S = 5:1)

NOTES.

8. TAPING SPECIFICATION FOLLOWS JIS C 0806 (IEC 60286-3).
9. MAKE EMPTY SECTION OF LEADER AND END ON EACH END OF THE TAPE.
10. TOP TAPE SHALL NOT STICK OUT FROM EMBOSS TAPE.
11. TOP TAPE SHALL NOT COVER FEED HOLE.

NO.	DESCRIPTION	MATERIAL	FINISH, REMARKS
11	PACKING LABEL	-	-
10	REEL	PS	ANTI-STATIC TYPE
9	TOP TAPE	PET	ANTI-STATIC TYPE HEAT ACTIVATED
8	EMBOSS TAPE	PS t=0.2	ANTI-STATIC TYPE OR CONDUCTIVE

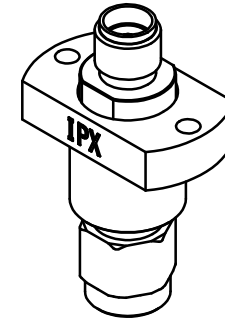
ANGLE	±2°	6 OVER 30 MAX.	±0.3	PROJECTION		SERIES No.	R1	CUSTOMER COPY		
6 MAX.	±0.2	30 OVER 120 MAX.	±0.5	TITLE	MHF® 4L RECEPTACLE <th>SCALE</th> <td>-</td> <th colspan="3" rowspan="4">I-PEX</th>	SCALE	-	I-PEX		
GENERAL TOLERANCE.				DWG. No.	20579 <th>UNIT</th> <td>mm</td>	UNIT	mm			
DWG.	DATE	SIZE	A3 <th>SHEET</th> <td>7/8 </td>			SHEET	7/8			
CHK.		REV.	13							



MHF 4 (4L) SMA ADAPTOR
PART NO. 90449-002

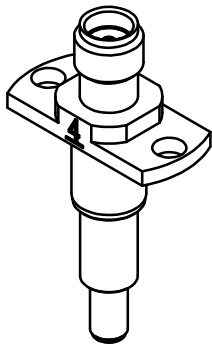


MHF 4 RECEPTACLE HIGH CYCLE ATTACHMENT
PART NO. 90683-0001

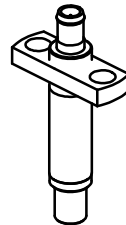


MHF SERIES HIGH CYCLE SMA ADAPTER BASE UNIT
PART NO. 90684-0001

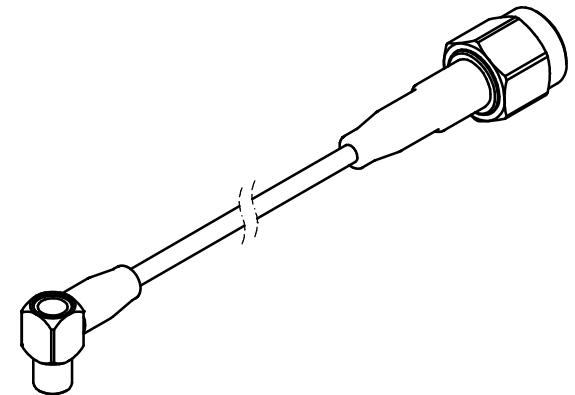
* 90683-0001 AND 90684-0001 SHOULD BE USED TOGETHER.



MHF 4 SMA ADAPTOR HIGH CYCLE TYPE
PART NO. 90698-0001



MHF 4 RECEPTACLE NARROW PITCH
SMA ADAPTOR HIGH CYCLE TYPE
PART NO. 90576-0001



4.5MM HIGH CYCLE TEST PROBE CABLE ASS'Y
PART NO. 90577-****

* 90576-0001 AND 90577-**** SHOULD BE USED TOGETHER.

ANGLE	±2°	6 OVER 30 MAX.	±0.3	PROJECTION	SERIES No.	CUSTOMER COPY						
6 MAX.	±0.2	30 OVER 120 MAX.	±0.5		R1	SCALE	I-PEX					
GENERAL TOLERANCE.				TITLE	MHF® 4L RECEPTACLE					UNIT	mm	
DWG.	DATE			DWG. No.		SIZE				SHEET	REV.	
CHK.				20579		A3				8/8	13	
APP.												