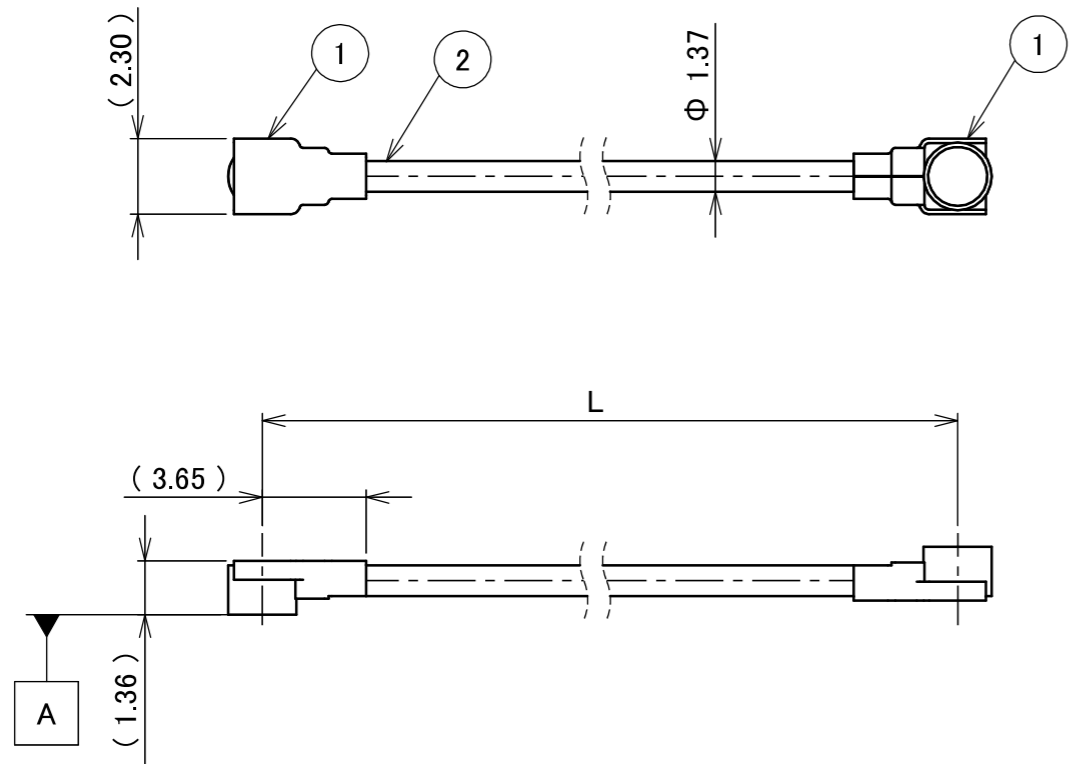
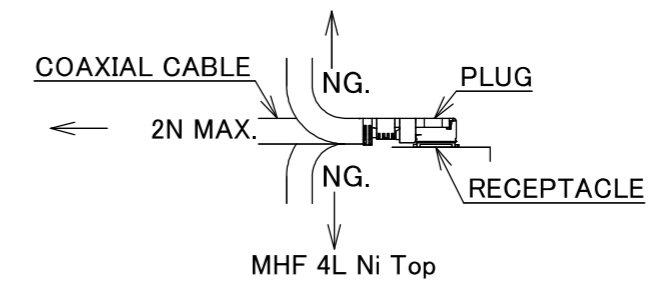
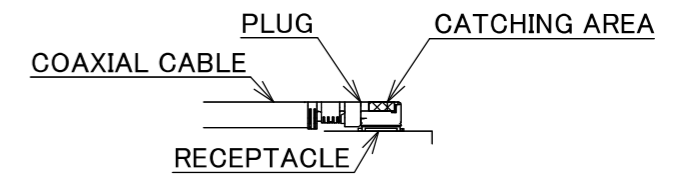
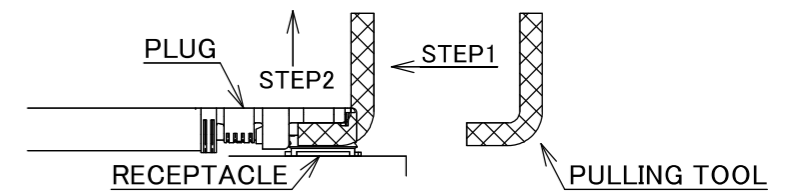


PART NO.	L
8-25-0962	300.00±3.0 mm

PLEASE CONTACT I-PEX FOR REQUESTS OTHER THAN THIS SPECIFICATIONS.  
PLEASE NOTE IF SPECIFICATIONS CHANGE, PART NO. WILL ALSO CHANGE.

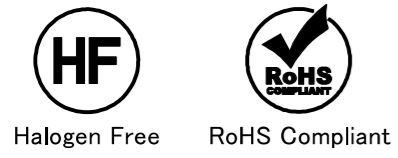


- NOTES
- SUGGESTIONS FOR MATING & UNMATING OPERATION.
    - MATING  
MATE THE CONNECTOR VERTICALLY, ALIGNING THE MATING AXIS ON PLUG AND RECEPTACLE. DO NOT SLANT MATE.
    - UNMATING
      - UNMATING BY PULLING TOOL.  
[P/N 90873-0001 (MHF 4L), ]  
USE THE PULLING TOOL AS THE FOLLOWING, AND PULL PLUG TO VERTICAL DIRECTION AS DIRECTLY AS POSSIBLE.
      - UNMATING DIRECTLY BY HAND.  
HOLD THE CATCHING AREA ON PLUG AND PULL THE PLUG VERTICALLY.
  - PACKING : PLASTIC BAG
  - PERMISSIBLE LOAD ON THE CABLE AFTER MATING
  - CABLE CRIMP STRENGTH : 15N MIN.



2	CABLE	1	AWG#30 Φ 1.37, BRAIDED SHIELD , BLACK
1	CONNECTOR-1, 2	2	MHF 4L Ni Top
NO.	DESCRIPTION	QTY	REMARK

					ANGLE	±2°	6 OVER 30 MAX.	±0.3	PROJECTION ⊕	SERIES No. H-250078D	CUSTOMER COPY						
						6 MAX.	±0.2	30 OVER 120 MAX.						±0.5			
					GENERAL TOLERANCE.					TITLE MHF® 4L-4L CABLE137-2	SCALE	I-PEX					
					DWG.	M.Toida					DATE			2026/02/02	X:1		
					CHK.	T.Takuno					UNIT			mm			
0	ZH00392	TOI	2026/02/02	-	APP.	K.Yufu				DWG. No.	8-25-0962	SIZE	A3	SHEET	1/1	REV.	0
REVISION RECORD																	



Confidential C

I-PEX Inc.

QKE-DFE06-02 REV.12