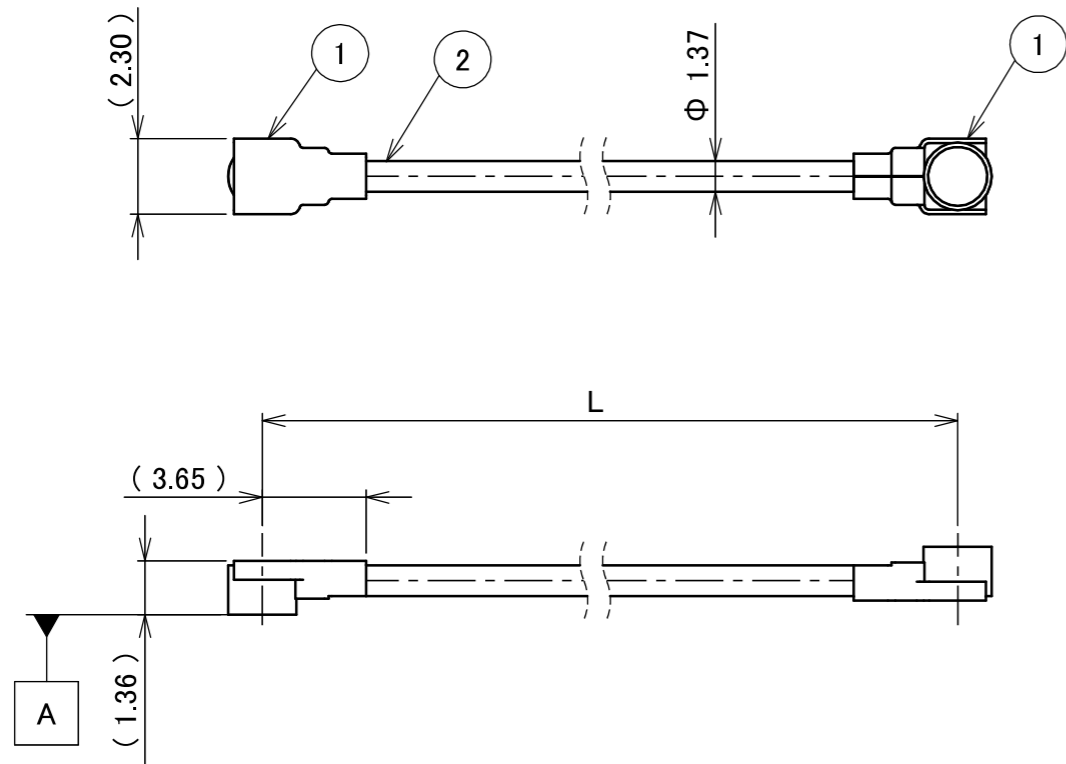
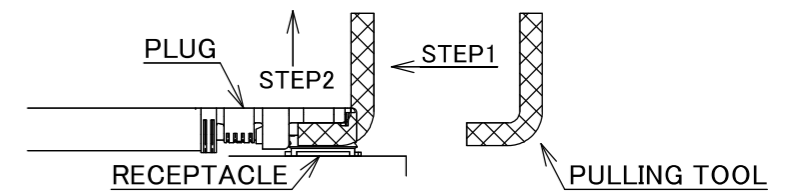


PART NO.	L
8-25-0959	50.00±1.0 mm

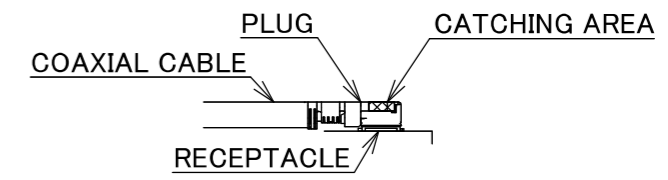
PLEASE CONTACT I-PEX FOR REQUESTS OTHER THAN THIS SPECIFICATIONS.  
PLEASE NOTE IF SPECIFICATIONS CHANGE, PART NO. WILL ALSO CHANGE.



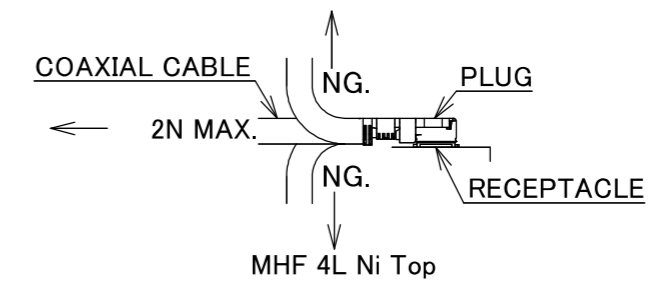
NOTES  
1. SUGGESTIONS FOR MATING & UNMATING OPERATION.  
1-1. MATING  
MATE THE CONNECTOR VERTICALLY,  
ALIGNING THE MATING AXIS ON PLUG AND RECEPTACLE.  
DO NOT SLANT MATE.  
1-2. UNMATING  
1-2-1.  
UNMATING BY PULLING TOOL.  
[P/N 90873-0001 (MHF 4L), ]  
USE THE PULLING TOOL AS THE FOLLOWING, AND  
PULL PLUG TO VERTICAL DIRECTION AS DIRECTLY AS POSSIBLE.



1-2-2.  
UNMATING DIRECTLY BY HAND.  
HOLD THE CATCHING AREA ON PLUG AND PULL THE PLUG  
VERTICALLY.



- 2. PACKING : PLASTIC BAG
- 3. PERMISSIBLE LOAD ON THE CABLE AFTER MATING



4. CABLE CRIMP STRENGTH : 15N MIN.

2	CABLE	1	AWG#30 Φ 1.37, BRAIDED SHIELD , BLACK
1	CONNECTOR-1, 2	2	MHF 4L Ni Top
NO.	DESCRIPTION	QTY	REMARK

					ANGLE	±2°	6 OVER 30 MAX.	±0.3	PROJECTION	SERIES No.	CUSTOMER COPY					
					6 MAX.	±0.2	30 OVER 120 MAX.	±0.5		H-250078A	I-PEX					
					GENERAL TOLERANCE.				TITLE	SCALE	I-PEX					
					DWG.	M.Toida		DATE	2026/02/02		MHF®	X:1	I-PEX			
					CHK.	T.Takuno					4L-4L CABLE137-2	UNIT	I-PEX			
0	ZH00392	TOI	2026/02/02	-	APP.	K.Yufu						mm	I-PEX			
REV.	ECN	BY	DATE	APP.	REVISION RECORD				DWG. No.	8-25-0959	SIZE	A3	SHEET	1/1	REV.	0



Confidential C

I-PEX Inc.

QKE-DFE06-02 REV.12