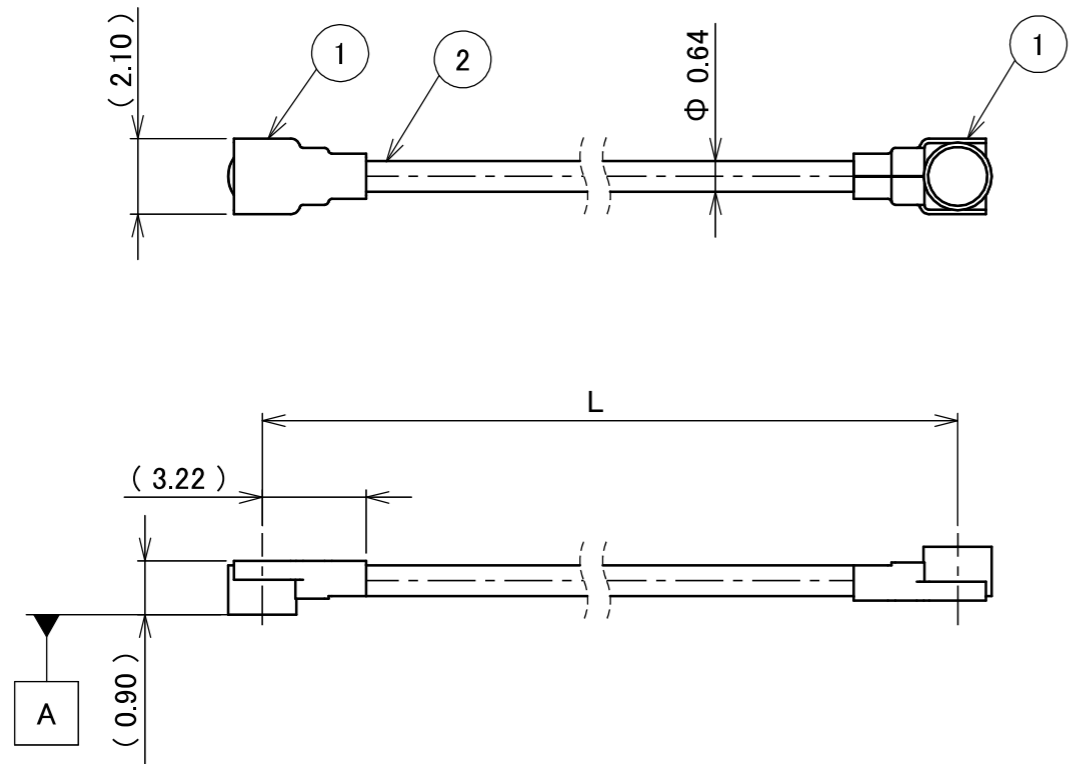
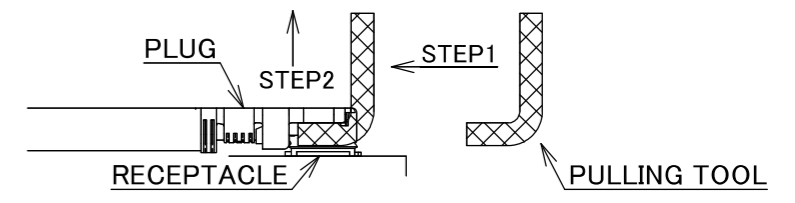


PART NO.	L
8-25-0922	50.00±1.0 mm

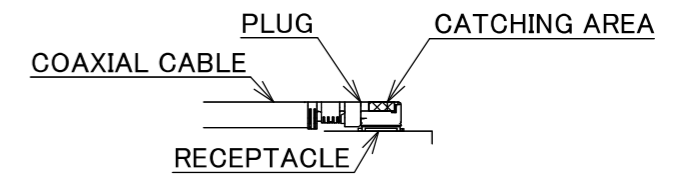
PLEASE CONTACT I-PEX FOR REQUESTS OTHER THAN THIS SPECIFICATIONS.
PLEASE NOTE IF SPECIFICATIONS CHANGE, PART NO. WILL ALSO CHANGE.



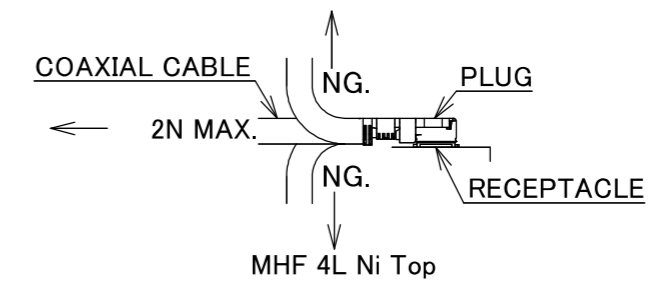
NOTES
1. SUGGESTIONS FOR MATING & UNMATING OPERATION.
1-1. MATING
MATE THE CONNECTOR VERTICALLY,
ALIGNING THE MATING AXIS ON PLUG AND RECEPTACLE.
DO NOT SLANT MATE.
1-2. UNMATING
1-2-1.
UNMATING BY PULLING TOOL.
[P/N 90609-0001 (MHF 4L),]
USE THE PULLING TOOL AS THE FOLLOWING, AND
PULL PLUG TO VERTICAL DIRECTION AS DIRECTLY AS POSSIBLE.



1-2-2.
UNMATING DIRECTLY BY HAND.
HOLD THE CATCHING AREA ON PLUG AND PULL THE PLUG
VERTICALLY.



2. PACKING : PLASTIC BAG
3. PERMISSIBLE LOAD ON THE CABLE AFTER MATING



4. CABLE CRIMP STRENGTH : 8N MIN.

2	CABLE	1	AWG#36 Φ 0.64, SPIRAL SHIELD , BLACK
1	CONNECTOR-1, 2	2	MHF 4L Ni Top
NO.	DESCRIPTION	QTY	REMARK

					ANGLE	±2°	6 OVER 30 MAX.	±0.3	PROJECTION ⊕	SERIES No. H-250072A	CUSTOMER COPY		
						6 MAX.	±0.2	30 OVER 120 MAX.					
					GENERAL TOLERANCE.				TITLE				
					DWG.	DATE			MHF®				
					Y.Nishimura			2026/01/26			4L-4L CABLE064-2		
					CHK.	T.Takuno			SCALE				
					APP.			K.Yufu			X:1		
					REVISION RECORD			DWG. No.			UNIT		
					8-25-0922			mm			I-PEX		
					REV.			SIZE			SHEET		
					A3			1/1			REV.		
					0			0					



Confidential C

I-PEX Inc.

QKE-DFE06-02 REV.12