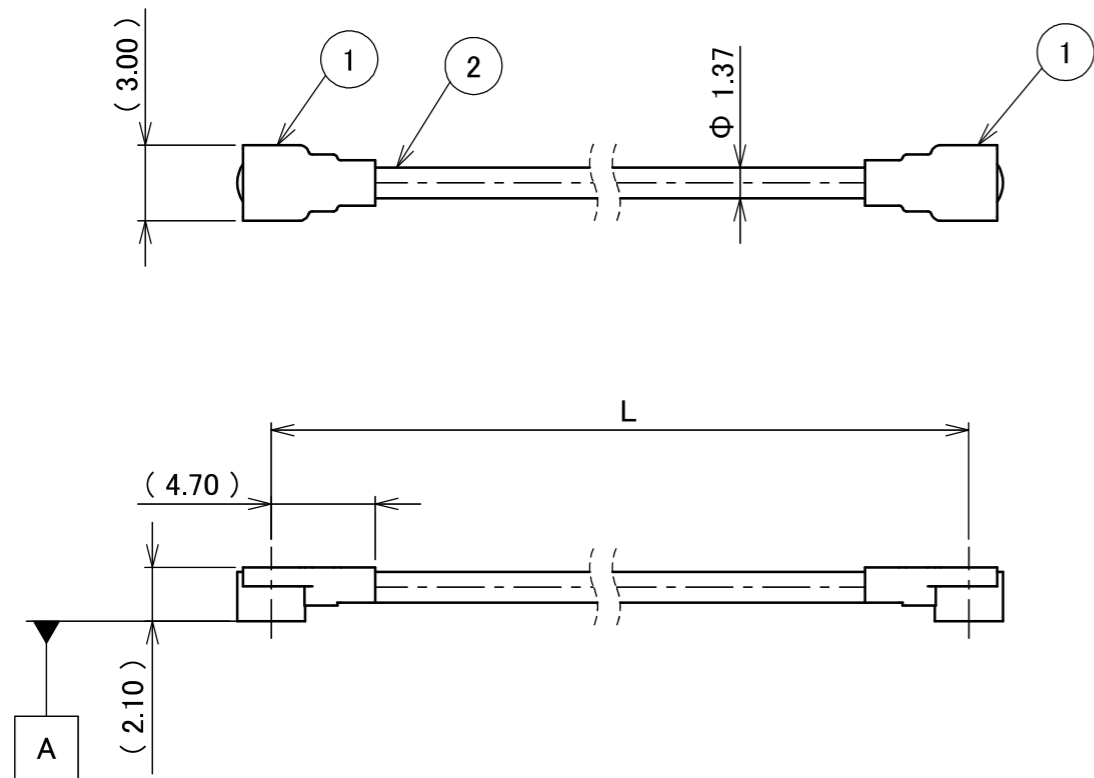


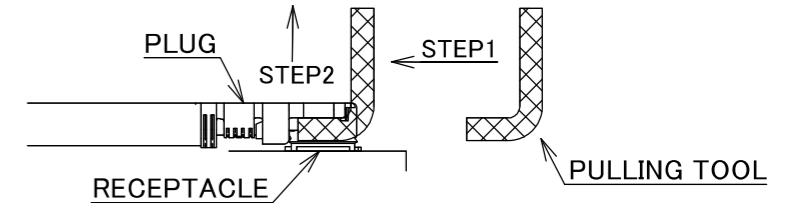
PART NO.	L
8-24-0143	500.00±5.0 mm

PLEASE CONTACT I-PEX FOR REQUESTS OTHER THAN THIS SPECIFICATIONS.
PLEASE NOTE IF SPECIFICATIONS CHANGE, PART NO. WILL ALSO CHANGE.

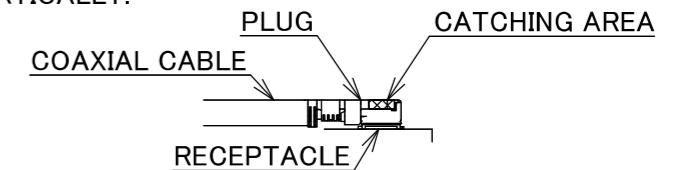


NOTES

- SUGGESTIONS FOR MATING & UNMATING OPERATION.
 - MATING
MATE THE CONNECTOR VERTICALLY, ALIGNING THE MATING AXIS ON PLUG AND RECEPTACLE. DO NOT SLANT MATE.
 - UNMATING
 - UNMATING BY PULLING TOOL.
[P/N 90192-001 (MHF I),]
USE THE PULLING TOOL AS THE FOLLOWING, AND PULL PLUG TO VERTICAL DIRECTION AS DIRECTLY AS POSSIBLE.
 - UNMATING DIRECTLY BY HAND.
HOLD THE CATCHING AREA ON PLUG AND PULL THE PLUG VERTICALLY.

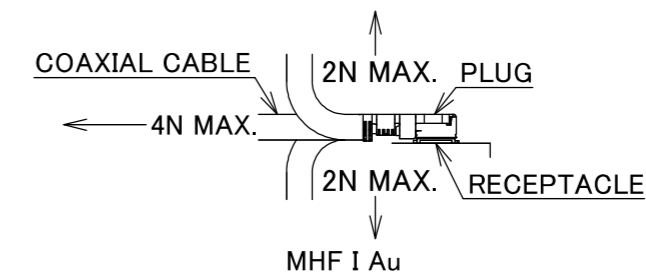


- UNMATING DIRECTLY BY HAND.
HOLD THE CATCHING AREA ON PLUG AND PULL THE PLUG VERTICALLY.



2. PACKING : PLASTIC BAG

3. PERMISSIBLE LOAD ON THE CABLE AFTER MATING



- CABLE CRIMP STRENGTH : 15N MIN.
- ORIENTATION OF CONNECTORS

2	CABLE	1	AWG#30 Φ 1.37, BRAIDED SHIELD , BLACK
1	CONNECTOR-1, 2	2	MHF I Au
NO.	DESCRIPTION	QTY	REMARK

					ANGLE	±2°	6 OVER 30 MAX.	±0.3	PROJECTION ⊕	SERIES No. H-240007D	CUSTOMER COPY			
					6 MAX.	±0.2	30 OVER 120 MAX.	±0.5						
					GENERAL TOLERANCE.				TITLE MHF® I-I CABLE137-1	SCALE	I-PEX			
					DWG.	M.Toida				DATE				2024/03/27
					CHK.	T.Takuno			TITLE	UNIT	mm			
					APP.	K.Yufu			DWG. No.	8-24-0143				SIZE
REVISION RECORD					REV.	ECN	BY	DATE	APP.	8-24-0143		SHEET	1/1	
										REV.	0			



Halogen Free



RoHS Compliant

Confidential C

I-PEX Inc.

QKE-DFE06-02 REV.12