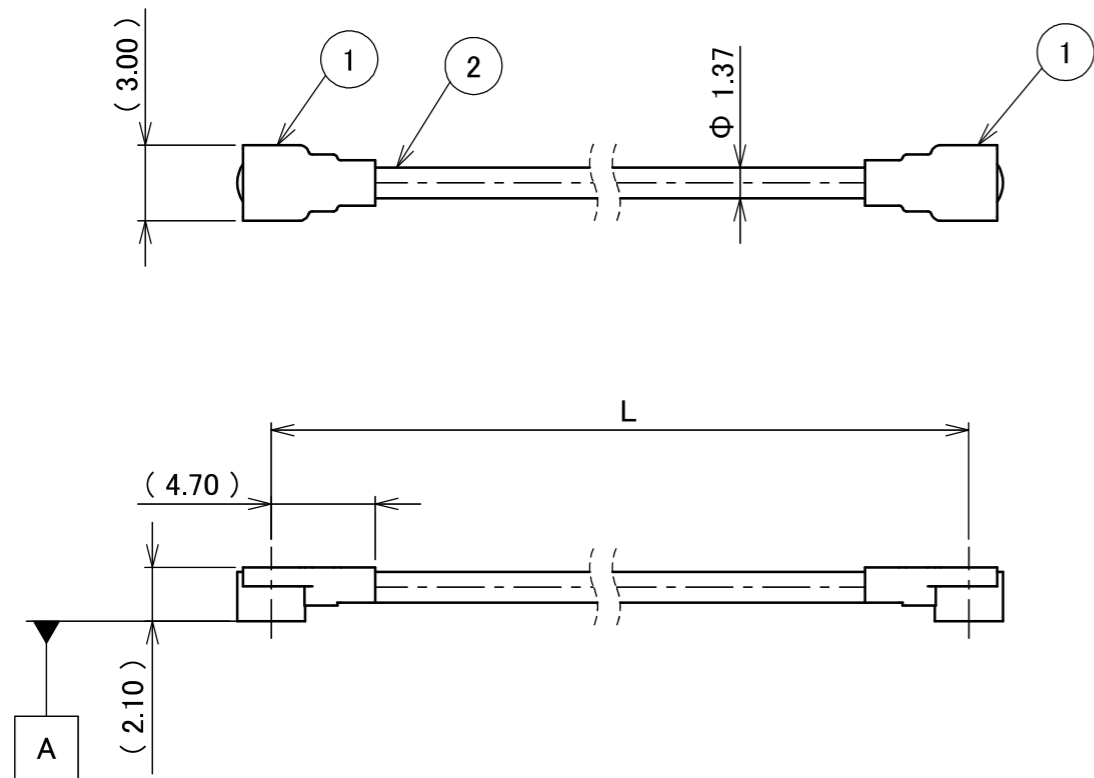
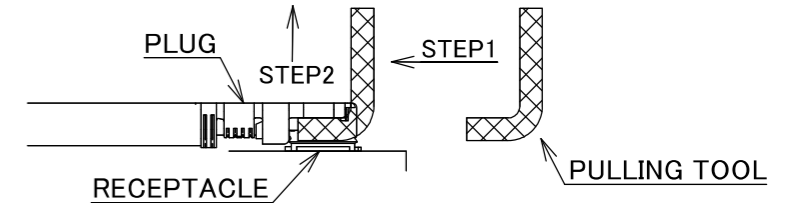


| | |
|-----------|---------------|
| PART NO. | L |
| 8-24-0142 | 200.00±1.0 mm |

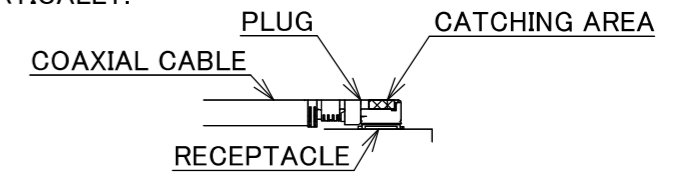
PLEASE CONTACT I-PEX FOR REQUESTS OTHER THAN THIS SPECIFICATIONS.
PLEASE NOTE IF SPECIFICATIONS CHANGE, PART NO. WILL ALSO CHANGE.



NOTES
1. SUGGESTIONS FOR MATING & UNMATING OPERATION.
1-1. MATING
MATE THE CONNECTOR VERTICALLY,
ALIGNING THE MATING AXIS ON PLUG AND RECEPTACLE.
DO NOT SLANT MATE.
1-2. UNMATING
1-2-1.
UNMATING BY PULLING TOOL.
[P/N 90192-001 (MHF I),]
USE THE PULLING TOOL AS THE FOLLOWING, AND
PULL PLUG TO VERTICAL DIRECTION AS DIRECTLY AS POSSIBLE.

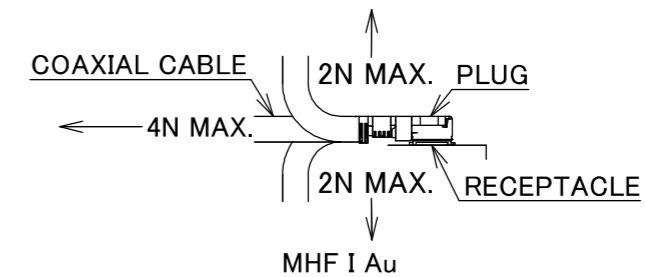


1-2-2.
UNMATING DIRECTLY BY HAND.
HOLD THE CATCHING AREA ON PLUG AND PULL THE PLUG
VERTICALLY.



2. PACKING : PLASTIC BAG

3. PERMISSIBLE LOAD ON THE CABLE AFTER MATING



4. CABLE CRIMP STRENGTH : 15N MIN.
5. ORIENTATION OF CONNECTORS

| | | | |
|-----|----------------|-----|---------------------------------------|
| 2 | CABLE | 1 | AWG#30 Φ 1.37, BRAIDED SHIELD , BLACK |
| 1 | CONNECTOR-1, 2 | 2 | MHF I Au |
| NO. | DESCRIPTION | QTY | REMARK |

| | | | | | | |
|--------------------|----------|----------------|------------------|---------------------------------|-------------------------|---------------|
| ANGLE | ±2° | 6 OVER 30 MAX. | ±0.3 | PROJECTION ⊕ | SERIES No. H-240007C | CUSTOMER COPY |
| | 6 MAX. | ±0.2 | 30 OVER 120 MAX. | | | |
| GENERAL TOLERANCE. | | | | TITLE MHF® I-I CABLE137-1 | | SCALE X:1 |
| DWG. | M.Toida | DATE | 2024/03/27 | UNIT mm | | I-PEX |
| CHK. | T.Takuno | | | SIZE | SHEET | |
| 0 | Z240371 | TOI | 2024/03/27 | DWG. No. | 8-24-0142 | REV. 0 |
| REV. | ECN | BY | DATE | APP. | K.Yufu | 1/1 |
| REVISION RECORD | | | | | | |



Halogen Free



RoHS Compliant

Confidential C

I-PEX Inc.

QKE-DFE06-02 REV.12