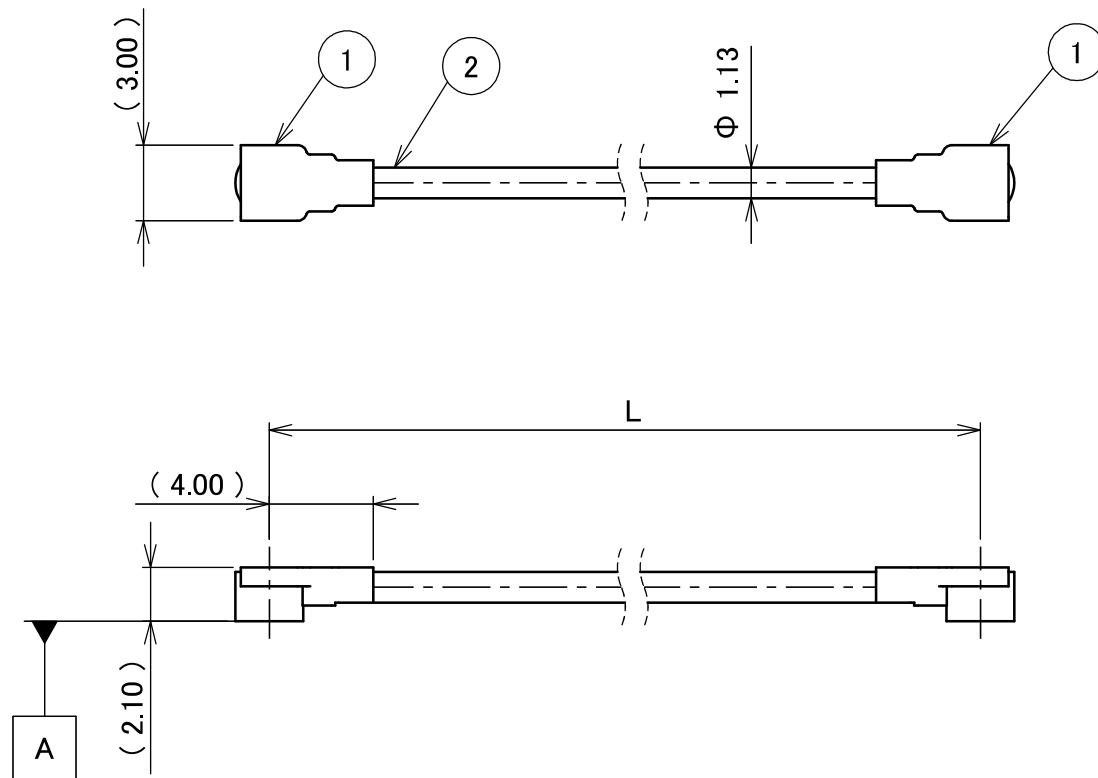


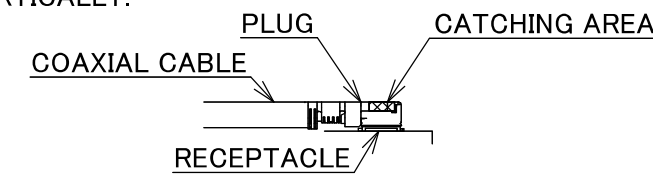
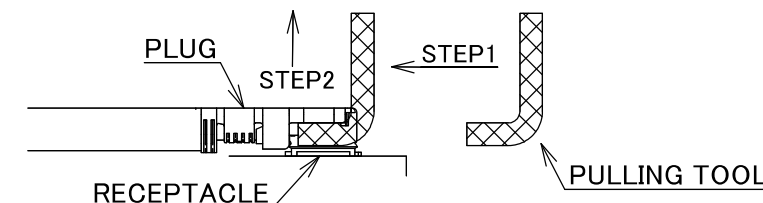
PART NO.	L
8-24-0115	500.00±5.0 mm

PLEASE CONTACT I-PEX FOR REQUESTS OTHER THAN THIS SPECIFICATIONS.
PLEASE NOTE IF SPECIFICATIONS CHANGE, PART NO. WILL ALSO CHANGE.

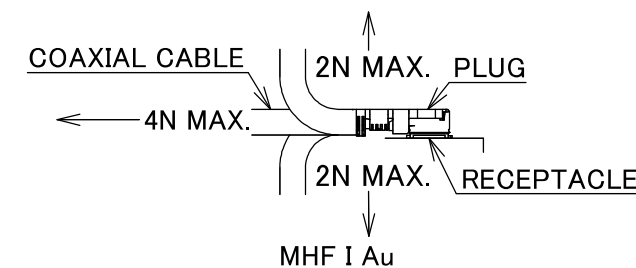


NOTES

1. SUGGESTIONS FOR MATING & UNMATING OPERATION.
 - 1-1. MATING
MATE THE CONNECTOR VERTICALLY, ALIGNING THE MATING AXIS ON PLUG AND RECEPTACLE. DO NOT SLANT MATE.
 - 1-2. UNMATING
 - 1-2-1.
UNMATING BY PULLING TOOL.
[P/N 90192-001 (MHF I),]
USE THE PULLING TOOL AS THE FOLLOWING, AND PULL PLUG TO VERTICAL DIRECTION AS DIRECTLY AS POSSIBLE.
 - 1-2-2.
UNMATING DIRECTLY BY HAND.
HOLD THE CATCHING AREA ON PLUG AND PULL THE PLUG VERTICALLY.



2. PACKING : PLASTIC BAG
3. PERMISSIBLE LOAD ON THE CABLE AFTER MATING



4. CABLE CRIMP STRENGTH : 10N MIN.
5. ORIENTATION OF CONNECTORS

2	CABLE	1	AWG#32 Φ 1.13, BRAIDED SHIELD , BLACK
1	CONNECTOR-1, 2	2	MHF I Au
NO.	DESCRIPTION	QTY	REMARK

					ANGLE	±2°	6 OVER 30 MAX.	±0.3	PROJECTION ⊕	SERIES No. H-240006C	CUSTOMER COPY					
						6 MAX.	±0.2	30 OVER 120 MAX.						±0.5		
					GENERAL TOLERANCE.				TITLE MHF® I-I CABLE113-1	SCALE X:1 UNIT mm	I-PEX					
					DWG.	M.Toida								DATE	2024/03/22	
					CHK.	T.Takuno										
0	Z240329	TOI	2024/03/22		APP.	K.Yufu			DWG. No.	8-24-0115		SIZE	SHEET	REV.		
REVISION RECORD										A3	1/1	0				



Halogen Free



RoHS Compliant